



शिक्षणाचा अधिकार

सर्व शिक्षा अभियान
सारे शिक्षक, पुढे जाऊया

District Profile

Based on Unified District Information System for Education (UDISE), 2012-13

District : Ahmadnagar

1 – Demographic (Source : Census of India,2011)

	Male	Female	Person	Sex Ratio	Child Sex Ratio (0-6 years)
Population	2,348,802	2,194,281	4,543,083		
Literacy rate	88.8	71.2	80.2	934	839

2- Number of Schools by Management and Category

Indicator (Number of schools)	Govt. and Local bodies	Pvt. Aided	Pvt. Unaided	Un-recognised	Total
Primary (1-4)	3,141	77	102	21	3,341
Primary with Upper Primary (1-7)	586	92	81	5	764
Pri,Upper,Secondary with Hsecondary (1 to 12)	12	6	10	0	28
Only Upper Primary	0	0	0	0	0
Upper,Secondary with Hsecondary (5 to 12)	3	309	24	0	336
Primary,Upperprimary with Secondary(1 to 10)	9	4	11	5	29
Upperprimary with Secondary(5 to 10)	4	303	34	0	341
Secondary Only (8 to 10)	2	100	92	3	197
Secondary with HSecondary(8 to 12)	1	16	12	0	29
Higher Secondary with college attached (11 to 12)	0	30	40	0	70
Total	3,758	937	406	34	5,135
Having Primary level classes	3,748	179	204	31	4,162
Having Upper Primary level classes	617	830	264	13	1,724
Having Secondary level classes	31	738	183	8	960
Having HigherSecondary level classes	16	361	86	0	463
Ratio of Primary to Upper Primary schools	State average				1.6
	District				2.4

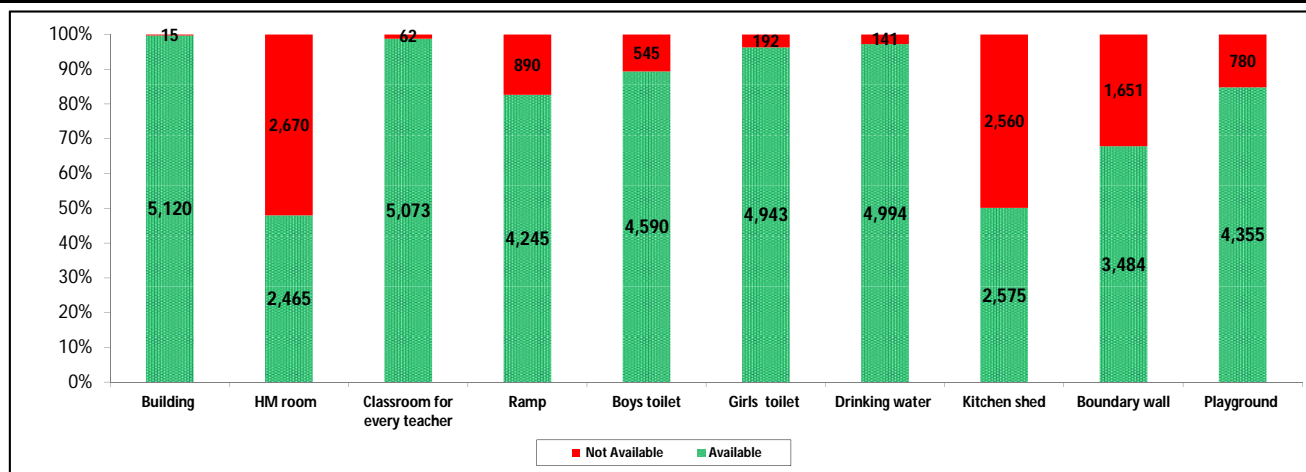
3 - Number of Mediumwise Schools by Management .

Indicator (Number of Mediumwise schools)	Govt. and Local bodies	Pvt. Aided	Pvt. Unaided	Un-recognised	Total
Marathi	3,659	906	188	13	4,766
English	5	6	206	21	238
Hindi	2	2	0	0	4
Urdu	92	23	12	0	127
Bangali	0	0	0	0	0
Gujrati	0	0	0	0	0
Kannada	0	0	0	0	0
Sindhi	0	0	0	0	0
Tamil	0	0	0	0	0
Telgu	0	0	0	0	0
Total	3,758	937	406	34	5,135

4 – Infrastructure

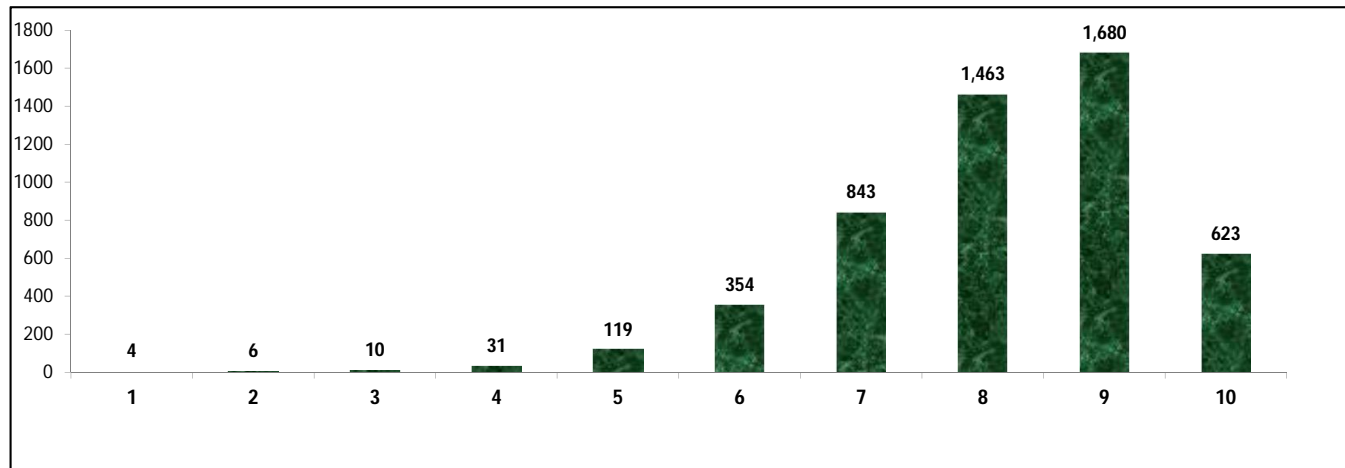
(Norms as specified in the schedule under section 19 of "The right of children to free and compulsory education act, 2009" (RTE Act))

Status of Infrastructure Facilities in Schools (Numbers, All schools)



Indicator : Schools with infrastructure facilities available		Govt. and Local bodies	Pvt. Aided	Pvt. Unaided	Un-recognised	Total
Total Schools		3758	937	406	34	5135
1. Building	Number	3,746	934	406	34	5,120
	%	99.7	99.7	100.0	100.0	99.7
2. Office-cum-store-cum-HM room	Number	1,296	780	360	29	2,465
	%	34.5	83.2	88.7	85.3	48.0
3. One classroom for every teacher	Number	3,699	935	405	34	5,073
	%	98.4	99.8	99.8	100.0	98.8
4. Ramp	Number	3,633	427	174	11	4,245
	%	96.7	45.6	42.9	32.4	82.7
5. Separate toilet for boys	Number	3,399	806	354	31	4,590
	%	90.4	86.0	87.2	91.2	89.4
6. Separate toilet for girls	Number	3,591	917	402	33	4,943
	%	95.6	97.9	99.0	97.1	96.3
7. Drinking water facility	Number	3,621	935	404	34	4,994
	%	96.4	99.8	99.5	100.0	97.3
8. Kitchen shed	Number	2,203	363	7	2	2,575
	%	58.6	38.7	1.7	5.9	50.1
9. Boundary wall	Number	2,501	657	303	23	3,484
	%	66.6	70.1	74.6	67.6	67.8
10. Playground	Number	3,043	901	381	30	4,355
	%	81.0	96.2	93.8	88.2	84.8
Indicators		Govt. and Local bodies	Pvt. Aided	Pvt. Unaided	Un-recognised	Total
Number of classrooms(1 to 8)		12,506	6,764	2,188	174	21,632
Number of classrooms(9 to 10)		56	2,110	389	5	2,560
Number of classrooms(11 to 12)		23	1,134	0	0	1,157
Student Classroom Ratio (SCR) Primary		24	UpperPri.	37	Elementry	31
Primary schools having SCR more than 30	Number	453	60	26	0	539
	%	12.1	6.4	6.4	0.0	10.5
Upper Primary. schools having SCR more than 35	Number	55	510	57	0	622
	%	1.5	54.4	14.0	0.0	12.1
Schools fulfilling "10" infrastructure norms for building under RTE	Number	496	125	1	1	623
	%	13.2	13.3	0.2	2.9	12.1

Number of schools by number of infrastructure elements complinace for building under RTE



5- Enrolment

Number of students enrolled in		Govt. and Local bodies	Pvt. Aided	Pvt. Unaided	Un-recognised	Total
Primary Classes (1-5)	Boys	137,424	60,583	32,417	1,118	231,542
	Girls	123,962	49,655	18,655	642	192,914
	Total	261,386	110,238	51,072	1,760	424,456
Upper Primary Classes (6-8)	Boys	16,438	111,237	11,746	221	139,642
	Girls	15,863	89,236	7,403	138	112,640
	Total	32,301	200,473	19,149	359	252,282
Secondary Classes (9-10)	Boys	1,332	73,520	8,431	79	83,362
	Girls	1,129	58,478	5,623	49	65,279
	Total	2,461	131,998	14,054	128	148,641
Higher Secondary Classes (11-12)	Boys	438	54,736	4,916	0	60,090
	Girls	482	41,916	3,805	0	46,203
	Total	920	96,652	8,721	0	106,293
Elementary Classes (1-8)	Boys	153,862	171,820	44,163	1,339	371,184
	Girls	139,825	138,891	26,058	780	305,554
	Total	293,687	310,711	70,221	2,119	676,738
All Classes (1-12)	Boys	155,632	300,076	57,510	1,418	514,636
	Girls	141,436	239,285	35,486	829	417,036
	Total	297,068	539,361	92,996	2,247	931,672

5.1- Castewise Enrolment

Indicator	Primary (1-5)	Upper Primary (6-8)	Secondary (9-10)	Higher Sec. (11-12)	Elementry (1-8)	All (Class 1-12)
All Social Groups	424,456	252,282	148,641	106,293	676,738	931,672
General	186,627	115,340	72,774	54,153	301,967	428,894
Schedule Castes (SC)	59,982	36,139	19,626	12,061	96,121	127,808
Schedule Tribes (ST)	50,641	24,495	10,923	6,493	75,136	92,552
Other Backward Classes (OBC)	127,206	76,308	45,318	33,586	203,514	282,418
Muslim	34,387	18,580	9,370	4,219	52,967	66,556
Nomadic Tribes (NT)	56,172	33,723	19,537	12,566	89,895	121,998
Vimukat Jatis (VJ)	13,642	6,142	2,894	1,769	19,784	24,447
Special Backward Classes (SBC)	3,112	2,072	1,452	947	5,184	7,583
Bouddhist Minority	646	349	268	178	995	1,441
Parshi Minority	50	52	25	27	102	154
Christan Minority	1,032	687	404	629	1,719	2,752
Sikh Minority	301	352	293	227	653	1,173
Jain Minority	1,577	682	464	377	2,259	3,100
B. P. L.	37,386	14,447	7,397	2,456	51,833	61,686
Children with Special Needs (C.W.S.N.)	7,109	2,671	1,133	171	9,780	11,084

5.2- Mediumwise Enrolment

Indicator (Number of Mediumwise schools)	Govt. and Local bodies	Pvt. Aided	Pvt. Unaided	Un-recognised	Total
Marathi	284,528	524,636	32,281	1,074	842,519
English	4,799	6,471	59,429	1,173	71,872
Hindi	397	561	0	0	958
Urdu	7,344	7,693	1,286	0	16,323
Bangali	0	0	0	0	0
Gujrati	0	0	0	0	0
Kannada	0	0	0	0	0
Sindhi	0	0	0	0	0
Tamil	0	0	0	0	0
Telgu	0	0	0	0	0
Total	297,068	539,361	92,996	2,247	931,672
School size (Distribution of schools by Enrolment)	Govt. and Local bodies	Pvt. Aided	Pvt. Unaided	Un-recognised	Total
Less than 10	64	0	2	2	68
11-20	614	2	8	4	628
21-30	705	1	10	3	719
31-60	989	18	45	8	1,060
61-150	793	132	160	15	1,100
More than 150	593	784	181	2	1,560

6- Gender Gap in Enrolment (in %)

Indicator	Primary (1-5)	Upper Primary (6-8)	Secondary (9-10)	Higher Secondary (11-12)	Elementry (1-8)	All (Class 1-12)
All Social Groups	9.10	10.70	12.17	13.06	9.70	10.48
General	11.45	11.52	11.76	10.64	11.48	11.42
Schedule Castes (SC)	4.47	6.98	10.56	12.93	5.41	6.91
Schedule Tribes (ST)	2.60	8.03	11.73	21.36	4.37	6.43
Other Backward Classes (OBC)	10.42	12.09	13.62	13.83	5.44	5.37
Muslim	3.04	5.62	7.68	3.91	3.94	4.47
Nomadic Tribes (NT)	9.47	11.78	13.47	21.47	10.34	11.98
Vimukat Jatis (VJ)	4.41	8.56	19.14	26.29	5.70	8.78
Special Backward Classes (SBC)	5.21	5.79	-0.41	-0.41	5.44	5.37
Bouddhist Minority	8.05	12.32	9.70	14.61	9.55	10.20
Parshi Minority	4.00	30.77	28.00	48.15	17.65	24.68
Christan Minority	2.71	1.02	0.99	15.74	2.04	5.01
Sikh Minority	14.95	0.00	5.80	19.82	6.89	9.12
Jain Minority	8.18	5.87	6.90	3.98	7.48	6.97
B. P. L.	2.54	1.45	5.61	-1.79	2.24	2.48
Children with Special Needs (C.W.S.N.)	19.14	17.63	15.45	9.94	2.04	18.26
No. of clusters having gender gap > 10 %	74	106	141	96	78	103
No. of Block having gender gap > 10 %	4	7	14	10	6	9

7- Teacher

(Norms as specified in the schedule under section 19 and 23 of the RTE Act)

Indicators	Govt. and Local bodies	Pvt. Aided	Pvt. Unaided	Un-recognised	Total
Number of Teachers	Male	7,341	9,529	1,372	18,320
	Female	5,291	3,762	1,492	10,636
	Total	12,632	13,291	2,864	28,956
Percentage of female teachers to total teachers	41.9	28.3	52.1	53.8	36.7
Schools without a female teacher	Number	1,311	149	56	1,518
	%	34.9	15.9	13.8	29.6

7.1- Mediumwise Teacher

Medium	Govt. and Local bodies	Pvt. Aided	Pvt. Unaided	Un-recognised	Total
Marathi	12,104	12,871	1,179	89	26,243
English	182	202	1,636	80	2,100
Hindi	22	17	0	0	39
Urdu	324	201	49	0	574
Bangali	0	0	0	0	0
Gujrati	0	0	0	0	0
Kannada	0	0	0	0	0
Sindhi	0	0	0	0	0
Tamil	0	0	0	0	0
Telgu	0	0	0	0	0
Total	12,632	13,291	2,864	169	28,956

7.2- Castewise Teacher

Caste	Govt. and Local bodies	Pvt. Aided	Pvt. Unaided	Un-recognised	Total
All	12,632	13,291	2,864	169	28,956
Genral	5,375	6,622	1,661	88	13,746
SC	1,611	1,659	260	20	3,550
ST	974	745	70	6	1,795
OBC	2,170	2,349	474	30	5,023
VJ	1,305	801	190	3	2,299
NT	508	349	70	4	931
SBC	284	198	41	0	523
NT-B	25	56	6	4	91
NT-C	88	32	32	2	154
NT-D	53	16	16	2	87

Indicators		Govt. and Local bodies	Pvt. Aided	Pvt. Unaided	Un-recognised	Total
Schools with single teacher	Number	77	1	4	2	84
	%	2.0	0.1	1.0	5.9	1.6
PTR	Local Body-Only	Primary Section	Upper Primary Section	Secondary Section	Elementry Section	All (Class 1-12)
Pupil Teacher Ratio	22	31	27	36	30	32

Indicators		Govt. and Local bodies	Pvt. Aided	Pvt. Unaided	Un-recognised	Total
Primary schools having PTR more than 30	Number	614	60	37	1	712
	%	16.4	33.5	18.1	3.2	17.1
Upper Primary having PTR more than 35	Number	49	267	22	1	339
	%	7.9	32.2	8.3	7.7	19.7
Trained /Untrained Teacher	Primary Section	Upper Primary Section	Secondary Section	Higher Secondary Section	Elementry Section	All (Class 1-12)
Teacher All	13,621	9,228	4,157	1,950	22,849	28,956
Trained Teacher Number	13,534	9,120	4,127	1,890	22,654	28,671
%	99.4	98.8	99.3	96.9	99.1	99.0
Untrained Teacher All Number	87	108	30	60	195	285
%	0.6	1.2	0.7	3.1	0.9	1.0

8-Efficiency indicators

8.1 Annual Average Drop-out Rate

Social Groups	Primary			UpperPrimary		
	Boys	Girls	Total	Boys	Girls	Total
All Social Groups	0.62	1.03	0.81	0.03	1.49	0.66
General	3.27	4.31	3.73	4.08	5.92	4.90
Schedule Castes (SC)	0.65	0.50	0.58	-0.21	1.35	0.52
Schedule Tribes (ST)	4.00	3.20	3.61	3.98	5.18	4.53
Other Backward Classes (OBC)	-9.42	-8.05	-8.80	-9.76	-8.52	-9.21
Vimukat Jatis (VJ)	-2.80	-3.75	-3.25	21.42	21.43	21.43
Nomadic Tribes (NT)	4.12	5.54	4.77	-2.51	-1.43	-2.03
Special Backward Classes (SBC)	22.22	13.71	18.42	24.93	19.74	22.57
Muslim	1.40	1.25	1.32	2.77	4.42	3.56

8.2 Transition Rate

Social Groups	Primary			UpperPrimary		
	Boys	Girls	Total	Boys	Girls	Total
All Social Groups	99.9	98.4	99.2	100.0	97.0	98.6
General	95.4	94.1	94.8	96.0	93.1	94.7
Schedule Castes (SC)	98.6	98.3	98.5	99.3	95.4	97.5
Schedule Tribes (ST)	93.5	92.1	92.9	95.4	89.9	92.9
Other Backward Classes (OBC)	110.7	108.5	109.7	108.7	108.7	108.3
VJ / NT	102.6	104.2	103.3	102.7	107.7	104.9
Special Backward Classes (SBC)	77.8	85.0	81.2	83.6	88.1	85.8
Muslim	95.4	96.9	96.1	93.2	89.8	91.5

8.3 Gender Parity Index (GPI)

Social Groups	Primary Section	Upper Primary Section	Secondary Section	Higher Secondary Section	Elementary Section	All (Class 1-12)
All Social Groups	0.83	0.81	0.78	0.77	0.82	0.81
General	0.79	0.79	0.79	0.81	0.79	0.80
Schedule Castes (SC)	0.91	0.87	0.81	0.81	0.90	0.87
Schedule Tribes (ST)	0.95	0.85	0.79	0.65	0.92	0.88
Other Backward Classes (OBC)	0.81	0.78	0.76	0.73	0.80	0.79
Vimukat Jatis (VJ)	0.92	0.84	0.68	0.58	0.89	0.84
Nomadic Tribes (NT)	0.83	0.79	0.76	0.65	0.81	0.79
Special Backward Classes (SBC)	0.90	0.89	1.01	0.76	0.90	0.90
Muslim	0.94	0.89	0.86	0.92	0.92	0.91

8.4 Retention Rate

Social Groups	Primary			UpperPrimary		
	Boys	Girls	Total	Boys	Girls	Total
All Social Groups	95.72	92.04	94.03	101.22	101.22	99.45
General	93.67	90.11	92.07	95.98	95.98	91.82
Schedule Castes (SC)	89.38	87.23	88.36	98.64	92.93	95.92
Schedule Tribes (ST)	79.66	78.59	79.15	91.71	87.49	89.76
Other Backward Classes (OBC)	79.66	78.59	79.15	116.03	114.71	115.44
Muslim	90.56	93.97	94.03	98.71	92.78	99.45