



District Profile

Based on Unified District Information System for Education (UDISE), 2012-13

District : Akola

1 – Demographic (Source : Census of India,2011)

	Male	Female	Person	Sex Ratio	Child Sex Ratio (0-6 years)
Population	936,226	882,391	1,818,617		
Literacy rate	92.9	81.9	87.6	942	900

2- Number of Schools by Management and Category

Indicator (Number of schools)	Govt. and Local bodies	Pvt. Aided	Pvt. Unaided	Un-recognised	Total
Primary (1-4)	630	20	105	3	758
Primary with Upper Primary (1-7)	384	56	76	0	516
Pri,Upper,Secondary with Hsecondary (1 to 12)	0	0	4	0	4
Only Upper Primary	1	0	0	0	1
Upper,Secondary with Hsecondary (5 to 12)	10	117	10	0	137
Primary,Upperprimary with Secondary(1 to 10)	2	1	18	0	21
Upperprimary with Secondary(5 to 10)	8	110	15	0	133
Secondary Only (8 to 10)	0	63	49	0	112
Secondary with HSecondary(8 to 12)	2	14	7	0	23
Higher Secondary with college attached (11 to 12)	0	15	24	0	39
Total	1,037	396	308	3	1,744
Having Primary level classes	1,016	77	203	3	1,299
Having Upper Primary level classes	407	361	179	0	947
Having Secondary level classes	22	305	103	0	430
Having HigherSecondary level classes	12	146	45	0	203
Ratio of Primary to Upper Primary schools	State average				1.6
	District				1.4

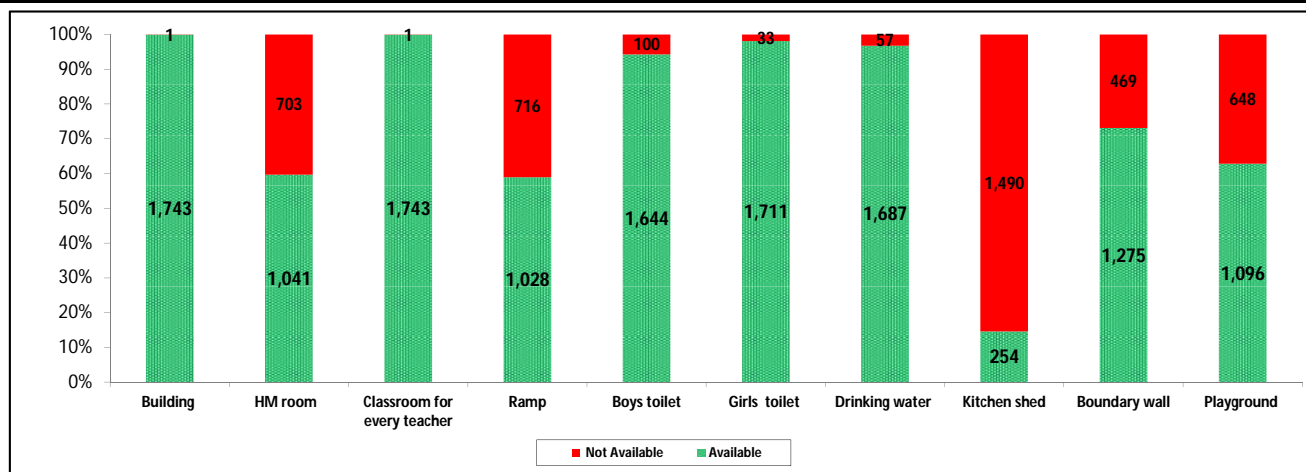
3 - Number of Mediumwise Schools by Management .

Indicator (Number of Mediumwise schools)	Govt. and Local bodies	Pvt. Aided	Pvt. Unaided	Un-recognised	Total
Marathi	877	327	85	0	1,289
English	0	6	169	3	178
Hindi	14	8	0	0	22
Urdu	145	55	53	0	253
Bangali	0	0	0	0	0
Gujrati	1	0	0	0	1
Kannada	0	0	0	0	0
Sindhi	0	0	1	0	1
Tamil	0	0	0	0	0
Telgu	0	0	0	0	0
Total	1,037	396	308	3	1,744

4 – Infrastructure

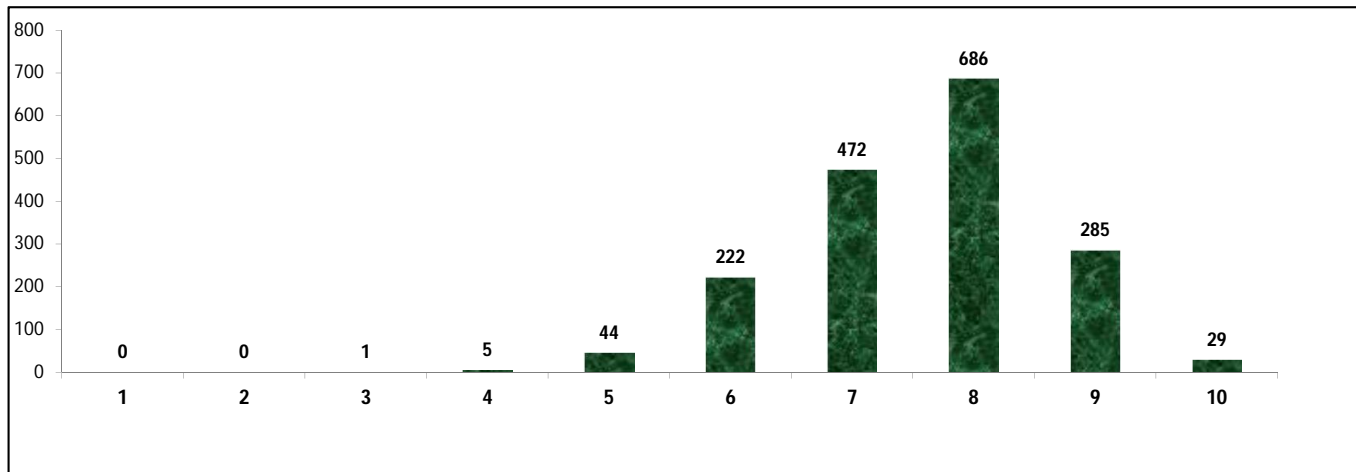
(Norms as specified in the schedule under section 19 of "The right of children to free and compulsory education act, 2009"(RTE Act))

Status of Infrastructure Facilities in Schools (Numbers, All schools)



Indicator : Schools with infrastructure facilities available		Govt. and Local bodies	Pvt. Aided	Pvt. Unaided	Un-recognised	Total
Total Schools		1037	396	308	3	1744
1. Building	Number	1,036	396	308	3	1,743
	%	99.9	100.0	100.0	100.0	99.9
2. Office-cum-store-cum-HM room	Number	436	343	259	3	1,041
	%	42.0	86.6	84.1	100.0	59.7
3. One classroom for every teacher	Number	1,036	396	308	3	1,743
	%	99.9	100.0	100.0	100.0	99.9
4. Ramp	Number	916	66	45	1	1,028
	%	88.3	16.7	14.6	33.3	58.9
5. Separate toilet for boys	Number	965	372	304	3	1,644
	%	93.1	93.9	98.7	100.0	94.3
6. Separate toilet for girls	Number	1,009	392	307	3	1,711
	%	97.3	99.0	99.7	100.0	98.1
7. Drinking water facility	Number	981	396	307	3	1,687
	%	94.6	100.0	99.7	100.0	96.7
8. Kitchen shed	Number	106	139	9	0	254
	%	10.2	35.1	2.9	0.0	14.6
9. Boundary wall	Number	652	339	281	3	1,275
	%	62.9	85.6	91.2	100.0	73.1
10. Playground	Number	462	355	276	3	1,096
	%	44.6	89.6	89.6	100.0	62.8
Indicators		Govt. and Local bodies	Pvt. Aided	Pvt. Unaided	Un-recognised	Total
Number of classrooms(1 to 8)		4,355	1,968	1,681	9	8,013
Number of classrooms(9 to 10)		69	944	203	0	1,216
Number of classrooms(11 to 12)		28	556	0	0	584
Student Classroom Ratio (SCR) Primary		23	UpperPri.	36	Elementry	32
Primary schools having SCR more than 30	Number	97	10	37	0	144
	%	9.4	2.5	12.0	0.0	8.3
Upper Primary. schools having SCR more than 35	Number	12	228	44	0	284
	%	1.2	57.6	14.3	0.0	16.3
Schools fulfilling "10" infrastructure norms for building under RTE	Number	13	15	1	0	29
	%	1.3	3.8	0.3	0.0	1.7

Number of schools by number of infrastructure elements complinace for building under RTE



5- Enrolment

Number of students enrolled in		Govt. and Local bodies	Pvt. Aided	Pvt. Unaided	Un-recognised	Total
Primary Classes (1-5)	Boys	42,234	15,769	23,443	99	81,545
	Girls	43,063	13,930	17,572	78	74,643
	Total	85,297	29,699	41,015	177	156,188
Upper Primary Classes (6-8)	Boys	12,204	32,547	7,785	0	52,536
	Girls	12,777	29,930	5,999	0	48,706
	Total	24,981	62,477	13,784	0	101,242
Secondary Classes (9-10)	Boys	1,457	24,780	4,449	0	30,686
	Girls	1,460	23,269	3,751	0	28,480
	Total	2,917	48,049	8,200	0	59,166
Higher Secondary Classes (11-12)	Boys	749	15,831	2,495	0	19,075
	Girls	300	15,185	1,834	0	17,319
	Total	1,049	31,016	4,329	0	36,394
Elementary Classes (1-8)	Boys	54,438	48,316	31,228	99	134,081
	Girls	55,840	43,860	23,571	78	123,349
	Total	110,278	92,176	54,799	177	257,430
All Classes (1-12)	Boys	56,644	88,927	38,172	99	183,842
	Girls	57,600	82,314	29,156	78	169,148
	Total	114,244	171,241	67,328	177	352,990

5.1- Castewise Enrolment

Indicator	Primary (1-5)	Upper Primary (6-8)	Secondary (9-10)	Higher Sec. (11-12)	Elementry (1-8)	All (Class 1-12)
All Social Groups	156,188	101,242	59,166	36,394	257,430	352,990
General	39,926	23,527	13,165	8,662	63,453	85,280
Schedule Castes (SC)	37,191	25,604	14,951	7,821	62,795	85,567
Schedule Tribes (ST)	10,957	5,764	2,567	1,303	16,721	20,591
Other Backward Classes (OBC)	68,114	46,347	28,483	18,608	114,461	161,552
Muslim	35,414	21,152	11,002	4,754	56,566	72,322
Nomadic Tribes (NT)	10,801	7,603	4,444	2,093	18,404	24,941
Vimukat Jatis (VJ)	6,884	4,017	2,042	1,442	10,901	14,385
Special Backward Classes (SBC)	2,008	2,303	1,677	4,814	4,311	10,802
Bouddhist Minority	25,802	17,031	9,910	4,170	42,833	56,913
Parshi Minority	22	74	121	10	96	227
Christan Minority	149	83	47	6	232	285
Sikh Minority	39	30	19	10	69	98
Jain Minority	241	143	91	34	384	509
B. P. L.	26,968	16,288	8,495	2,851	43,256	54,602
Children with Special Needs (C.W.S.N.)	3,532	1,739	517	49	5,271	5,837

5.2- Mediumwise Enrolment

Indicator (Number of Mediumwise schools)	Govt. and Local bodies	Pvt. Aided	Pvt. Unaided	Un-recognised	Total
Marathi	87,872	138,374	11,708	0	237,954
English	0	5,450	42,611	177	48,238
Hindi	1,910	3,916	0	0	5,826
Urdu	24,413	23,501	12,746	0	60,660
Bangali	0	0	0	0	0
Gujrati	49	0	0	0	49
Kannada	0	0	0	0	0
Sindhi	0	0	263	0	263
Tamil	0	0	0	0	0
Telgu	0	0	0	0	0
Total	114,244	171,241	67,328	177	352,990
School size (Distribution of schools by Enrolment)	Govt. and Local bodies	Pvt. Aided	Pvt. Unaided	Un-recognised	Total
Less than 10	34	0	2	0	36
11-20	124	0	5	0	129
21-30	119	0	4	1	124
31-60	196	4	39	1	240
61-150	302	73	112	1	488
More than 150	262	319	146	0	727

6- Gender Gap in Enrolment (in %)

Indicator	Primary (1-5)	Upper Primary (6-8)	Secondary (9-10)	Higher Secondary (11-12)	Elementry (1-8)	All (Class 1-12)
All Social Groups	4.42	3.78	3.73	4.82	4.17	4.16
General	4.37	1.75	0.36	3.19	3.40	2.91
Schedule Castes (SC)	3.10	3.10	5.25	4.16	3.10	3.57
Schedule Tribes (ST)	4.24	9.47	8.14	11.59	6.05	6.66
Other Backward Classes (OBC)	5.20	4.49	4.09	84.67	4.57	38.96
Muslim	2.32	0.96	-1.44	-5.68	1.81	0.82
Nomadic Tribes (NT)	4.56	4.22	7.38	9.89	4.42	5.41
Vimukat Jatis (VJ)	5.32	3.71	10.38	26.63	4.72	7.72
Special Backward Classes (SBC)	4.58	4.56	-3.88	-3.88	4.57	38.96
Bouddhist Minority	3.09	3.73	5.47	5.95	3.34	3.90
Parshi Minority	54.55	-2.70	33.88	0.00	10.42	22.47
Christan Minority	-3.36	-8.43	19.15	-100.00	-5.17	-3.16
Sikh Minority	23.08	-6.67	15.79	100.00	10.14	20.41
Jain Minority	17.84	-14.69	-20.88	23.53	5.73	2.16
B. P. L.	2.55	0.68	-5.78	2.21	1.84	0.68
Children with Special Needs (C.W.S.N.)	13.93	2.70	7.93	14.29	-5.17	10.06
No. of clusters having gender gap > 10 %	12	19	16	19	11	15
No. of Block having gender gap > 10 %	0	0	1	3	0	0

7- Teacher

(Norms as specified in the schedule under section 19 and 23 of the RTE Act)

Indicators	Govt. and Local bodies	Pvt. Aided	Pvt. Unaided	Un-recognised	Total
Number of Teachers	Male	2,962	3,552	790	7,305
	Female	1,940	1,269	1,337	4,558
	Total	4,902	4,821	2,127	11,863
Percentage of female teachers to total teachers	39.6	26.3	62.9	92.3	38.4
Schools without a female teacher	Number	359	88	45	0
	%	34.6	22.2	14.6	0.0

7.1- Mediumwise Teacher

Medium	Govt. and Local bodies	Pvt. Aided	Pvt. Unaided	Un-recognised	Total
Marathi	3,989	3,903	456	0	8,348
English	0	122	1,304	13	1,439
Hindi	86	132	0	0	218
Urdu	825	664	363	0	1,852
Bangali	0	0	0	0	0
Gujrati	2	0	0	0	2
Kannada	0	0	0	0	0
Sindhi	0	0	4	0	4
Tamil	0	0	0	0	0
Telgu	0	0	0	0	0
Total	4,902	4,821	2,127	13	11,863

7.2- Castewise Teacher

Caste	Govt. and Local bodies	Pvt. Aided	Pvt. Unaided	Un-recognised	Total	
All	4,902	4,821	2,127	13	11,863	
Genral	1,276	1,497	818	1	3,592	
SC	591	632	240	1	1,464	
ST	322	308	64	7	701	
OBC	1,874	1,647	802	0	4,323	
VJ	306	255	66	1	628	
NT	182	199	26	0	407	
SBC	167	79	16	0	262	
NT-B	20	20	1	0	41	
NT-C	31	10	10	0	51	
NT-D	17	6	6	0	29	
Indicators	Govt. and Local bodies	Pvt. Aided	Pvt. Unaided	Un-recognised	Total	
Schools with single teacher	Number	33	0	2	1	36
	%	3.2	0.0	0.6	33.3	2.1
PTR	Local Body-Only	Primary Section	Upper Primary Section	Secondary Section	Elementry Section	All (Class 1-12)
Pupil Teacher Ratio	23	33	22	37	27	30
Indicators	Govt. and Local bodies	Pvt. Aided	Pvt. Unaided	Un-recognised	Total	
Primary schools having PTR more than 30	Number	113	12	42	0	167
	%	11.1	15.6	20.7	0.0	12.9
Upper Primary having PTR more than 35	Number	17	83	23	0	123
	%	4.2	23.0	12.8	0.0	13.0
Trained /Untrained Teacher	Primary Section	Upper Primary Section	Secondary Section	Higher Secondary Section	Elementry Section	All (Class 1-12)
Teacher All	4,804	4,599	1,610	850	9,403	11,863
Trained Teacher Number	4,744	4,493	1,592	839	9,237	11,668
%	98.8	97.7	98.9	98.7	98.2	98.4
Untrained Teacher All Number	60	106	18	11	166	195
%	1.2	2.3	1.1	1.3	1.8	1.6

8-Efficiency indicators

8.1 Annual Average Drop-out Rate

Social Groups	Primary			UpperPrimary		
	Boys	Girls	Total	Boys	Girls	Total
All Social Groups	2.84	2.82	2.83	0.29	1.05	0.65
General	6.72	4.43	5.64	7.94	8.20	8.07
Schedule Castes (SC)	2.66	3.32	2.98	0.82	-0.27	0.30
Schedule Tribes (ST)	7.18	9.43	8.27	5.26	10.00	7.47
Other Backward Classes (OBC)	-0.61	-0.13	-0.38	-5.68	-4.24	-4.99
Vimukat Jatis (VJ)	7.77	8.89	8.31	9.43	6.62	8.10
Nomadic Tribes (NT)	0.67	4.07	2.33	1.12	1.49	1.30
Special Backward Classes (SBC)	-51.15	-67.60	-58.57	-51.64	-51.17	-51.41
Muslim	13.08	13.31	13.19	9.22	9.46	9.34

8.2 Transition Rate

Social Groups	Primary			UpperPrimary		
	Boys	Girls	Total	Boys	Girls	Total
All Social Groups	96.3	96.4	96.4	98.4	97.5	98.0
General	89.6	94.2	91.7	88.7	90.0	89.3
Schedule Castes (SC)	97.9	96.5	97.2	97.7	99.4	98.5
Schedule Tribes (ST)	87.6	79.9	83.8	91.3	83.2	87.5
Other Backward Classes (OBC)	101.0	100.6	100.8	105.3	105.3	103.9
VJ / NT	103.1	103.3	103.2	105.6	108.7	107.1
Special Backward Classes (SBC)	188.2	217.4	202.1	154.5	168.3	160.8
Muslim	86.7	84.2	85.5	89.6	88.2	88.9

8.3 Gender Parity Index (GPI)

Social Groups	Primary Section	Upper Primary Section	Secondary Section	Higher Secondary Section	Elementary Section	All (Class 1-12)
All Social Groups	0.92	0.93	0.93	0.91	0.92	0.92
General	0.92	0.97	0.97	0.94	0.93	0.94
Schedule Castes (SC)	0.94	0.94	0.90	0.90	0.94	0.93
Schedule Tribes (ST)	0.92	0.83	0.85	0.79	0.89	0.88
Other Backward Classes (OBC)	0.90	0.91	0.92	0.90	0.91	0.91
Vimukat Jatis (VJ)	0.90	0.93	0.81	0.58	0.91	0.86
Nomadic Tribes (NT)	0.91	0.92	0.86	0.82	0.92	0.90
Special Backward Classes (SBC)	0.91	0.91	1.08	0.08	0.91	0.44
Muslim	0.95	0.98	1.03	1.12	0.96	0.98

8.4 Retention Rate

Social Groups	Primary			UpperPrimary		
	Boys	Girls	Total	Boys	Girls	Total
All Social Groups	94.34	95.98	95.12	93.58	93.58	93.60
General	89.13	91.23	90.13	87.33	87.33	88.28
Schedule Castes (SC)	93.45	94.38	93.89	94.97	97.24	96.06
Schedule Tribes (ST)	77.46	75.59	76.58	82.25	74.52	78.63
Other Backward Classes (OBC)	77.46	75.59	76.58	97.76	97.12	97.45
Muslim	90.41	90.58	95.12	91.91	87.08	93.60