



शिक्षणाचा अधिकार

सर्व शिक्षा अभियान  
सारे शिक्षक, पुढे जाऊया

# District Profile

Based on Unified District Information System for Education (UDISE), 2012-13

District : Aurangabad

1 – Demographic (Source : Census of India,2011)

	Male	Female	Person	Sex Ratio	Child Sex Ratio (0-6 years)
Population	1,928,156	1,767,772	3,695,928		
Literacy rate	89.3	70.8	80.4	917	848

2- Number of Schools by Management and Category

Indicator (Number of schools )	Govt. and Local bodies	Pvt. Aided	Pvt. Unaided	Un-recognised	Total
Primary (1-4)	1,337	76	298	6	1,717
Primary with Upper Primary (1-7)	823	201	236	0	1,260
Pri,Upper,Secondary with Hsecondary (1 to 12)	1	1	3	0	5
Only Upper Primary	0	0	0	0	0
Upper,Secondary with Hsecondary (5 to 12)	15	146	13	0	174
Primary,Upperprimary with Secondary(1 to 10)	6	8	42	0	56
Upperprimary with Secondary(5 to 10)	45	137	48	2	232
Secondary Only (8 to 10)	13	99	128	2	242
Secondary with HSecondary(8 to 12)	0	25	15	0	40
Higher Secondary with college attached (11 to 12)	1	20	45	0	66
<b>Total</b>	<b>2,241</b>	<b>713</b>	<b>828</b>	<b>10</b>	<b>3,792</b>
Having Primary level classes	2,167	286	579	6	3,038
Having Upper Primary level classes	903	617	485	4	2,009
Having Secondary level classes	80	416	249	4	749
Having HigherSecondary level classes	17	192	76	0	285
Ratio of Primary to Upper Primary schools	State average				1.6
	District				1.5

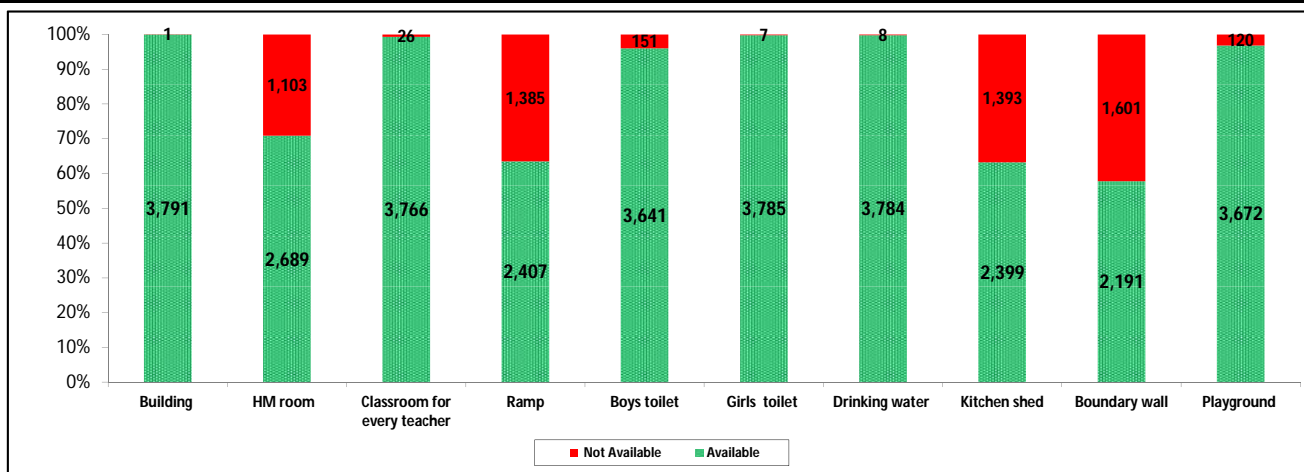
3 - Number of Mediumwise Schools by Management .

Indicator (Number of Mediumwise schools )	Govt. and Local bodies	Pvt. Aided	Pvt. Unaided	Un-recognised	Total
Marathi	2,207	571	380	5	3,163
English	0	12	320	5	337
Hindi	2	4	7	0	13
Urdu	32	126	121	0	279
Bangali	0	0	0	0	0
Gujrati	0	0	0	0	0
Kannada	0	0	0	0	0
Sindhi	0	0	0	0	0
Tamil	0	0	0	0	0
Telgu	0	0	0	0	0
<b>Total</b>	<b>2,241</b>	<b>713</b>	<b>828</b>	<b>10</b>	<b>3,792</b>

## 4 – Infrastructure

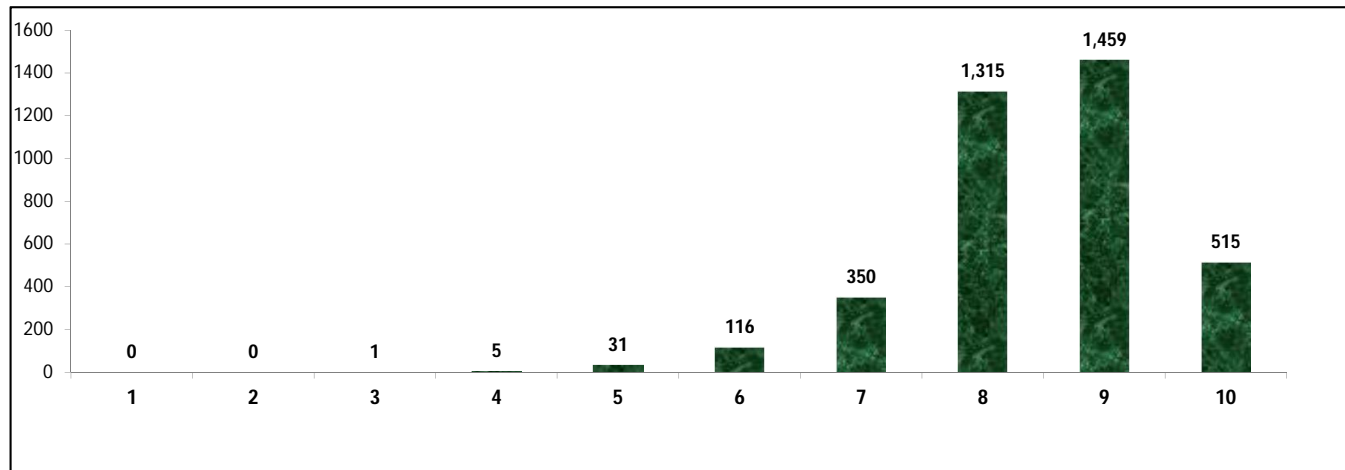
(Norms as specified in the schedule under section 19 of "The right of children to free and compulsory education act, 2009"( RTE Act ) )

### Status of Infrastructure Facilities in Schools (Numbers, All schools)



Indicator : Schools with infrastructure facilities available		Govt. and Local bodies	Pvt. Aided	Pvt. Unaided	Un-recognised	Total
<b>Total Schools</b>		<b>2241</b>	<b>713</b>	<b>828</b>	<b>10</b>	<b>3792</b>
1. Building	Number	2,240	713	828	10	3,791
	%	100.0	100.0	100.0	100.0	100.0
2. Office-cum-store-cum-HM room	Number	1,353	625	704	7	2,689
	%	60.4	87.7	85.0	70.0	70.9
3. One classroom for every teacher	Number	2,224	710	822	10	3,766
	%	99.2	99.6	99.3	100.0	99.3
4. Ramp	Number	2,181	103	123	0	2,407
	%	97.3	14.4	14.9	0.0	63.5
5. Separate toilet for boys	Number	2,200	645	786	10	3,641
	%	98.2	90.5	94.9	100.0	96.0
6. Separate toilet for girls	Number	2,240	710	825	10	3,785
	%	100.0	99.6	99.6	100.0	99.8
7. Drinking water facility	Number	2,240	711	823	10	3,784
	%	100.0	99.7	99.4	100.0	99.8
8. Kitchen shed	Number	2,127	259	13	0	2,399
	%	94.9	36.3	1.6	0.0	63.3
9. Boundary wall	Number	969	540	676	6	2,191
	%	43.2	75.7	81.6	60.0	57.8
10. Playground	Number	2,236	687	744	5	3,672
	%	99.8	96.4	89.9	50.0	96.8
<b>Indicators</b>		<b>Govt. and Local bodies</b>	<b>Pvt. Aided</b>	<b>Pvt. Unaided</b>	<b>Un-recognised</b>	<b>Total</b>
Number of classrooms(1 to 8)		9,886	5,284	4,997	47	20,214
Number of classrooms(9 to 10)		189	868	489	6	1,552
Number of classrooms(11 to 12)		43	548	0	0	591
<b>Student Classroom Ratio (SCR) Primary</b>		<b>22</b>	<b>UpperPri.</b>	<b>35</b>	<b>Elementry</b>	<b>31</b>
Primary schools having SCR more than 30	Number	151	47	66	0	264
	%	6.7	6.6	8.0	0.0	7.0
Upper Primary. schools having SCR more than 35	Number	32	192	80	1	305
	%	1.4	26.9	9.7	10.0	8.0
<b>Schools fulfilling "10" infrastructure norms for building under RTE</b>	Number	478	35	2	0	515
	%	21.3	4.9	0.2	0.0	13.6

**Number of schools by number of infrastructure elements complinace for building under RTE**



**5- Enrolment**

Number of students enrolled in		Govt. and Local bodies	Pvt. Aided	Pvt. Unaided	Un-recognised	Total
Primary Classes (1-5)	Boys	101,948	57,084	61,661	326	221,019
	Girls	97,855	53,722	40,601	148	192,326
	Total	199,803	110,806	102,262	474	413,345
Upper Primary Classes (6-8)	Boys	34,195	61,256	23,774	125	119,350
	Girls	32,096	53,432	14,683	93	100,304
	Total	66,291	114,688	38,457	218	219,654
Secondary Classes (9-10)	Boys	6,649	43,562	14,728	54	64,993
	Girls	5,253	36,232	9,314	68	50,867
	Total	11,902	79,794	24,042	122	115,860
Higher Secondary Classes (11-12)	Boys	1,120	31,655	7,608	0	40,383
	Girls	707	23,781	4,508	0	28,996
	Total	1,827	55,436	12,116	0	69,379
Elementary Classes (1-8)	Boys	<b>136,143</b>	<b>118,340</b>	<b>85,435</b>	<b>451</b>	<b>340,369</b>
	Girls	<b>129,951</b>	<b>107,154</b>	<b>55,284</b>	<b>241</b>	<b>292,630</b>
	Total	<b>266,094</b>	<b>225,494</b>	<b>140,719</b>	<b>692</b>	<b>632,999</b>
All Classes (1-12)	Boys	143,912	193,557	107,771	505	445,745
	Girls	135,911	167,167	69,106	309	372,493
	Total	279,823	360,724	176,877	814	818,238

**5.1- Castewise Enrolment**

Indicator	Primary (1-5)	Upper Primary (6-8)	Secondary (9-10)	Higher Sec. (11-12)	Elementry (1-8)	All (Class 1-12)
<b>All Social Groups</b>	<b>413,345</b>	<b>219,654</b>	<b>115,860</b>	<b>69,379</b>	<b>632,999</b>	<b>818,238</b>
General	210,905	111,067	58,874	36,806	321,972	417,652
Schedule Castes (SC)	65,820	36,263	18,616	10,106	102,083	130,805
Schedule Tribes (ST)	24,153	9,816	3,956	2,080	33,969	40,005
Other Backward Classes (OBC)	112,467	62,508	34,414	20,387	174,975	229,776
Muslim	102,464	47,767	21,146	5,761	150,231	177,138
Nomadic Tribes (NT)	29,320	16,274	8,801	4,799	45,594	59,194
Vimukat Jatis (VJ)	28,508	13,695	6,188	3,261	42,203	51,652
Special Backward Classes (SBC)	1,546	1,055	697	472	2,601	3,770
Bouddhist Minority	20,455	10,020	5,011	1,655	30,475	37,141
Parshi Minority	46	85	17	41	131	189
Christan Minority	618	291	200	36	909	1,145
Sikh Minority	198	138	77	20	336	433
Jain Minority	1,386	1,016	638	172	2,402	3,212
B. P. L.	31,438	11,261	3,068	692	42,699	46,459
Children with Special Needs (C.W.S.N.)	6,609	2,326	673	89	8,935	9,697

## 5.2- Mediumwise Enrolment

Indicator (Number of Mediumwise schools )	Govt. and Local bodies	Pvt. Aided	Pvt. Unaided	Un-recognised	Total
Marathi	270,967	291,053	87,602	536	650,158
English	0	9,344	70,194	278	79,816
Hindi	1,761	1,104	731	0	3,596
Urdu	7,095	59,223	18,350	0	84,668
Bangali	0	0	0	0	0
Gujrati	0	0	0	0	0
Kannada	0	0	0	0	0
Sindhi	0	0	0	0	0
Tamil	0	0	0	0	0
Telgu	0	0	0	0	0
<b>Total</b>	<b>279,823</b>	<b>360,724</b>	<b>176,877</b>	<b>814</b>	<b>818,238</b>
School size (Distribution of schools by Enrolment)	Govt. and Local bodies	Pvt. Aided	Pvt. Unaided	Un-recognised	Total
Less than 10	58	1	17	0	76
11-20	324	3	40	0	367
21-30	337	4	36	2	379
31-60	420	10	125	2	557
61-150	418	76	253	6	753
More than 150	684	619	357	0	1,660

## 6- Gender Gap in Enrolment (in %)

Indicator	Primary (1-5)	Upper Primary (6-8)	Secondary (9-10)	Higher Secondary (11-12)	Elementry (1-8)	All (Class 1-12)
<b>All Social Groups</b>	<b>6.94</b>	<b>8.67</b>	<b>12.19</b>	<b>16.41</b>	<b>7.54</b>	<b>8.95</b>
General	6.55	7.52	9.63	13.37	6.88	7.84
Schedule Castes (SC)	5.47	6.98	11.25	18.07	6.01	7.68
Schedule Tribes (ST)	5.18	12.20	22.55	28.46	7.21	9.83
Other Backward Classes (OBC)	8.92	11.14	15.89	18.22	10.80	13.42
Muslim	1.61	2.45	6.02	-15.08	1.88	1.82
Nomadic Tribes (NT)	8.77	9.36	12.87	17.02	8.98	10.21
Vimukat Jatis (VJ)	8.22	12.70	22.01	33.89	9.67	12.68
Special Backward Classes (SBC)	9.31	12.99	19.94	19.94	10.80	13.42
Bouddhist Minority	6.60	11.68	15.39	19.76	8.27	9.74
Parshi Minority	26.09	45.88	-17.65	21.95	38.93	30.16
Christan Minority	14.56	18.90	14.00	5.56	15.95	15.28
Sikh Minority	13.13	14.49	1.30	-30.00	13.69	9.47
Jain Minority	10.53	15.75	5.33	22.09	12.74	11.77
B. P. L.	-0.97	4.41	6.19	16.18	0.45	1.07
Children with Special Needs (C.W.S.N.)	17.96	16.60	11.74	37.08	15.95	17.38
No. of clusters having gender gap > 10 %	20	44	92	69	19	34
No. of Block having gender gap > 10 %	0	4	8	8	0	4

## 7- Teacher

(Norms as specified in the schedule under section 19 and 23 of the RTE Act)

Indicators	Govt. and Local bodies	Pvt. Aided	Pvt. Unaided	Un-recognised	Total
Number of Teachers	Male	6,317	5,364	2,063	13,766
	Female	4,136	3,512	3,345	11,015
	<b>Total</b>	<b>10,453</b>	<b>8,876</b>	<b>5,408</b>	<b>24,781</b>
Percentage of female teachers to total teachers	39.6	39.6	61.9	50.0	44.4
Schools without a female teacher	<b>Number</b>	<b>867</b>	<b>118</b>	<b>110</b>	<b>3</b>
	%	38.7	16.5	13.3	29.0

## 7.1- Mediumwise Teacher

Medium	Govt. and Local bodies	Pvt. Aided	Pvt. Unaided	Un-recognised	Total
Marathi	10,207	7,159	2,476	22	19,864
English	0	230	2,304	22	2,556
Hindi	37	35	34	0	106
Urdu	209	1,452	594	0	2,255
Bangali	0	0	0	0	0
Gujrati	0	0	0	0	0
Kannada	0	0	0	0	0
Sindhi	0	0	0	0	0
Tamil	0	0	0	0	0
Telgu	0	0	0	0	0
<b>Total</b>	<b>10,453</b>	<b>8,876</b>	<b>5,408</b>	<b>44</b>	<b>24,781</b>

## 7.2- Castewise Teacher

Caste	Govt. and Local bodies	Pvt. Aided	Pvt. Unaided	Un-recognised	Total	
All	10,453	8,876	5,408	44	24,781	
Genral	4,140	4,835	3,487	23	12,485	
SC	1,306	972	510	6	2,794	
ST	707	386	155	0	1,248	
OBC	2,158	1,432	572	6	4,168	
VJ	821	497	310	1	1,629	
NT	555	342	121	5	1,023	
SBC	206	64	27	0	297	
NT-B	62	18	9	0	89	
NT-C	93	18	18	1	130	
NT-D	99	11	11	2	123	
Indicators	Govt. and Local bodies	Pvt. Aided	Pvt. Unaided	Un-recognised	Total	
Schools with single teacher	Number	22	1	22	0	45
	%	1.0	0.1	2.7	0.0	1.2
PTR	Local Body-Only	Primary Section	Upper Primary Section	Secondary Section	Elementry Section	All (Class 1-12)
Pupil Teacher Ratio	27	35	27	34	32	33
Indicators	Govt. and Local bodies	Pvt. Aided	Pvt. Unaided	Un-recognised	Total	
Primary schools having PTR more than 30	Number	186	55	85	1	327
	%	8.6	19.2	14.7	16.7	10.8
Upper Primary having PTR more than 35	Number	81	166	49	1	297
	%	9.0	26.9	10.1	25.0	14.8
Trained /Untrained Teacher	Primary Section	Upper Primary Section	Secondary Section	Higher Secondary Section	Elementry Section	All (Class 1-12)
Teacher All	11,751	8,231	3,401	1,398	19,982	24,781
Trained Teacher Number	11,532	8,113	3,334	1,354	19,645	24,333
%	98.1	98.6	98.0	96.9	98.3	98.2
Untrained Teacher All Number	219	118	67	44	337	448
%	1.9	1.4	2.0	3.1	1.7	1.8

## 8-Efficiency indicators

### 8.1 Annual Average Drop-out Rate

Social Groups	Primary			UpperPrimary		
	Boys	Girls	Total	Boys	Girls	Total
<b>All Social Groups</b>	0.83	0.46	0.65	5.60	7.70	6.60
<b>General</b>	-8.98	-5.61	-7.38	-3.70	0.62	-1.66
Schedule Castes (SC)	-2.46	-0.98	-1.75	1.30	3.55	2.36
Schedule Tribes (ST)	5.49	6.96	6.19	8.64	9.34	8.95
Other Backward Classes (OBC)	-20.99	-16.49	-18.90	-18.90	-15.67	-17.44
Vimukat Jatis (VJ)	-9.39	-7.87	-8.69	-13.00	-4.00	-8.89
Nomadic Tribes (NT)	-10.49	-6.41	-8.59	0.32	1.22	0.73
Special Backward Classes (SBC)	41.80	36.74	39.58	7.60	-5.52	2.31
Muslim	-7.86	-7.45	-7.66	-3.82	-1.90	-2.88

### 8.2 Transition Rate

Social Groups	Primary			UpperPrimary		
	Boys	Girls	Total	Boys	Girls	Total
<b>All Social Groups</b>	107.0	103.2	105.2	102.7	96.7	99.9
General	104.0	101.1	102.6	99.9	92.8	96.5
Schedule Castes (SC)	101.2	99.7	100.5	95.3	91.2	93.4
Schedule Tribes (ST)	94.0	87.7	90.9	85.6	80.9	83.6
Other Backward Classes (OBC)	120.2	114.4	117.5	116.3	116.3	114.3
VJ / NT	91.4	97.0	93.9	101.7	111.9	106.1
Special Backward Classes (SBC)	60.9	71.6	65.6	120.5	130.2	124.4
Muslim	104.2	102.7	103.5	95.5	90.4	93.0

### 8.3 Gender Parity Index (GPI)

Social Groups	Primary Section	Upper Primary Section	Secondary Section	Higher Secondary Section	Elementry Section	All (Class 1-12)
<b>All Social Groups</b>	0.87	0.84	0.78	0.72	0.86	0.84
General	0.88	0.86	0.86	0.76	0.87	0.85
Schedule Castes (SC)	0.90	0.87	0.80	0.80	0.89	0.86
Schedule Tribes (ST)	0.90	0.78	0.63	0.56	0.87	0.82
Other Backward Classes (OBC)	0.84	0.80	0.73	0.67	0.82	0.79
Vimukat Jatis (VJ)	0.85	0.77	0.64	0.49	0.82	0.77
Nomadic Tribes (NT)	0.84	0.83	0.77	0.71	0.84	0.81
Special Backward Classes (SBC)	0.83	0.77	0.67	0.69	0.80	0.76
Muslim	0.97	0.95	0.89	1.36	0.96	0.96

### 8.4 Retention Rate

Social Groups	Primary			UpperPrimary		
	Boys	Girls	Total	Boys	Girls	Total
<b>All Social Groups</b>	97.53	93.63	95.68	109.55	109.55	104.73
General	88.70	87.38	88.08	107.42	107.42	97.57
Schedule Castes (SC)	93.15	89.69	91.49	99.80	93.28	96.70
Schedule Tribes (ST)	75.31	70.88	73.15	86.06	73.18	80.16
Other Backward Classes (OBC)	75.31	70.88	73.15	124.86	112.71	119.29
Muslim	111.32	109.66	95.68	100.07	94.50	104.73