



शिक्षणाचा अधिकार

सर्व शिक्षा अभियान  
सारे शिक्षक, पुढे जाऊया

# District Profile

Based on Unified District Information System for Education (UDISE), 2012-13

District : Bid

1 – Demographic (Source : Census of India,2011)

	Male	Female	Person	Sex Ratio	Child Sex Ratio (0-6 years)
Population	1,352,468	1,233,494	2,585,962		
Literacy rate	84.0	62.3	73.5	912	801

2- Number of Schools by Management and Category

Indicator (Number of schools )	Govt. and Local bodies	Pvt. Aided	Pvt. Unaided	Un-recognised	Total
Primary (1-4)	1,574	55	99	0	1,728
Primary with Upper Primary (1-7)	668	128	59	0	855
Pri,Upper,Secondary with Hsecondary (1 to 12)	2	4	2	0	8
Only Upper Primary	1	0	0	0	1
Upper,Secondary with Hsecondary (5 to 12)	4	152	17	0	173
Primary,Upperprimary with Secondary(1 to 10)	43	10	19	0	72
Upperprimary with Secondary(5 to 10)	16	187	55	0	258
Secondary Only (8 to 10)	7	52	49	1	109
Secondary with HSecondary(8 to 12)	0	10	6	0	16
Higher Secondary with college attached (11 to 12)	0	38	19	0	57
<b>Total</b>	<b>2,315</b>	<b>636</b>	<b>325</b>	<b>1</b>	<b>3,277</b>
Having Primary level classes	2,287	197	179	0	2,663
Having Upper Primary level classes	741	543	207	1	1,492
Having Secondary level classes	72	415	148	1	636
Having HigherSecondary level classes	6	204	44	0	254
Ratio of Primary to Upper Primary schools	State average				1.6
	District				1.8

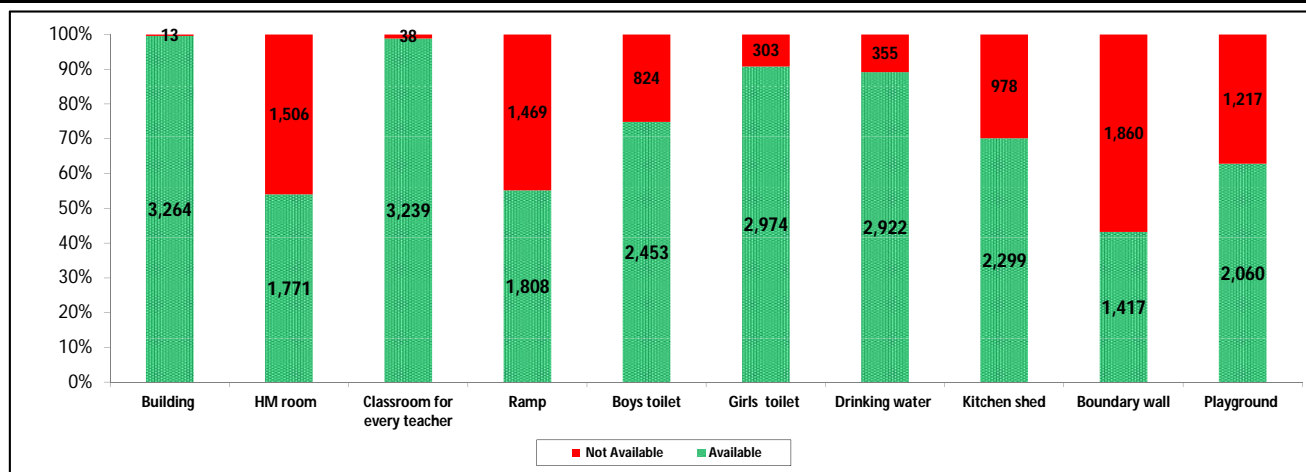
3 - Number of Mediumwise Schools by Management .

Indicator (Number of Mediumwise schools )	Govt. and Local bodies	Pvt. Aided	Pvt. Unaided	Un-recognised	Total
Marathi	2,278	575	186	1	3,040
English	3	1	110	0	114
Hindi	0	1	0	0	1
Urdu	34	59	29	0	122
Bangali	0	0	0	0	0
Gujrati	0	0	0	0	0
Kannada	0	0	0	0	0
Sindhi	0	0	0	0	0
Tamil	0	0	0	0	0
Telgu	0	0	0	0	0
<b>Total</b>	<b>2,315</b>	<b>636</b>	<b>325</b>	<b>1</b>	<b>3,277</b>

## 4 – Infrastructure

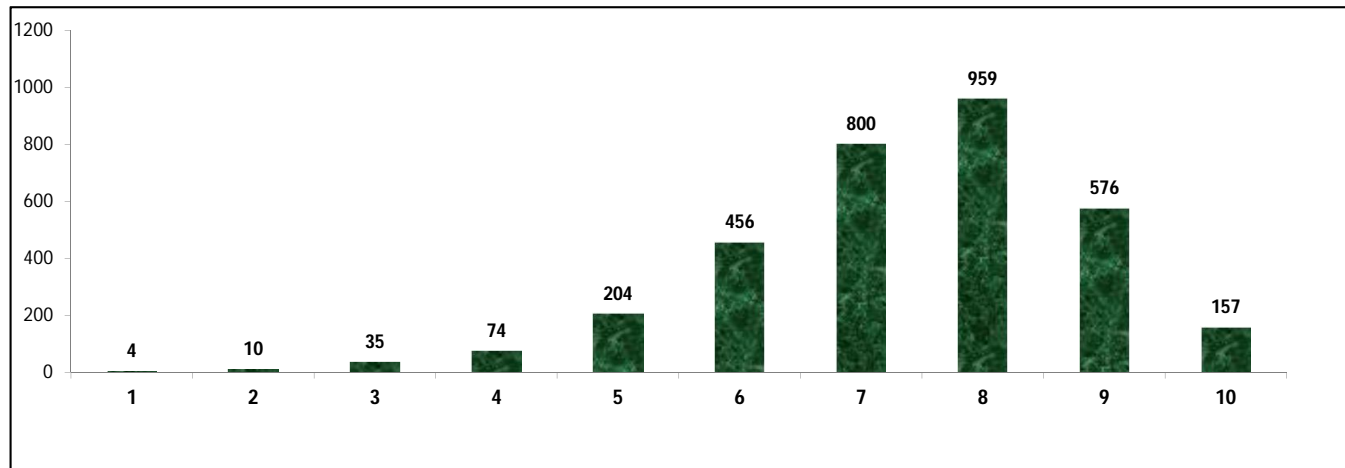
(Norms as specified in the schedule under section 19 of "The right of children to free and compulsory education act, 2009" ( RTE Act ) )

### Status of Infrastructure Facilities in Schools (Numbers, All schools)



Indicator : Schools with infrastructure facilities available		Govt. and Local bodies	Pvt. Aided	Pvt. Unaided	Un-recognised	Total
<b>Total Schools</b>		<b>2315</b>	<b>636</b>	<b>325</b>	<b>1</b>	<b>3277</b>
1. Building	Number	2,303	635	325	1	3,264
	%	99.5	99.8	100.0	100.0	99.6
2. Office-cum-store-cum-HM room	Number	890	594	287	0	1,771
	%	38.4	93.4	88.3	0.0	54.0
3. One classroom for every teacher	Number	2,279	634	325	1	3,239
	%	98.4	99.7	100.0	100.0	98.8
4. Ramp	Number	1,660	93	55	0	1,808
	%	71.7	14.6	16.9	0.0	55.2
5. Separate toilet for boys	Number	1,704	483	265	1	2,453
	%	73.6	75.9	81.5	100.0	74.9
6. Separate toilet for girls	Number	2,086	573	314	1	2,974
	%	90.1	90.1	96.6	100.0	90.8
7. Drinking water facility	Number	1,966	631	324	1	2,922
	%	84.9	99.2	99.7	100.0	89.2
8. Kitchen shed	Number	1,920	358	21	0	2,299
	%	82.9	56.3	6.5	0.0	70.2
9. Boundary wall	Number	709	455	252	1	1,417
	%	30.6	71.5	77.5	100.0	43.2
10. Playground	Number	1,215	567	277	1	2,060
	%	52.5	89.2	85.2	100.0	62.9
<b>Indicators</b>		<b>Govt. and Local bodies</b>	<b>Pvt. Aided</b>	<b>Pvt. Unaided</b>	<b>Un-recognised</b>	<b>Total</b>
Number of classrooms(1 to 8)		8,270	3,923	1,552	3	13,748
Number of classrooms(9 to 10)		167	1,321	299	0	1,787
Number of classrooms(11 to 12)		6	939	0	0	945
<b>Student Classroom Ratio (SCR) Primary</b>		<b>21</b>	<b>UpperPri.</b>	<b>36</b>	<b>Elementry</b>	<b>31</b>
Primary schools having SCR more than 30	Number	200	45	15	0	260
	%	8.6	7.1	4.6	0.0	7.9
Upper Primary. schools having SCR more than 35	Number	11	305	45	0	361
	%	0.5	48.0	13.8	0.0	11.0
<b>Schools fulfilling "10" infrastructure norms for building under RTE</b>	Number	126	29	2	0	157
	%	5.4	4.6	0.6	0.0	4.8

**Number of schools by number of infrastructure elements complinace for building under RTE**



**5- Enrolment**

Number of students enrolled in		Govt. and Local bodies	Pvt. Aided	Pvt. Unaided	Un-recognised	Total
Primary Classes (1-5)	Boys	86,187	46,075	17,747	0	150,009
	Girls	82,449	37,097	10,170	0	129,716
	Total	168,636	83,172	27,917	0	279,725
Upper Primary Classes (6-8)	Boys	16,213	53,408	8,213	27	77,861
	Girls	18,833	43,710	5,294	17	67,854
	Total	35,046	97,118	13,507	44	145,715
Secondary Classes (9-10)	Boys	2,996	36,424	6,128	40	45,588
	Girls	3,106	28,006	3,721	35	34,868
	Total	6,102	64,430	9,849	75	80,456
Higher Secondary Classes (11-12)	Boys	134	31,726	3,449	0	35,309
	Girls	61	22,013	2,179	0	24,253
	Total	195	53,739	5,628	0	59,562
Elementary Classes (1-8)	Boys	<b>102,400</b>	<b>99,483</b>	<b>25,960</b>	<b>27</b>	<b>227,870</b>
	Girls	<b>101,282</b>	<b>80,807</b>	<b>15,464</b>	<b>17</b>	<b>197,570</b>
	Total	<b>203,682</b>	<b>180,290</b>	<b>41,424</b>	<b>44</b>	<b>425,440</b>
All Classes (1-12)	Boys	105,530	167,633	35,537	67	308,767
	Girls	104,449	130,826	21,364	52	256,691
	Total	209,979	298,459	56,901	119	565,458

**5.1- Castewise Enrolment**

Indicator	Primary (1-5)	Upper Primary (6-8)	Secondary (9-10)	Higher Sec. (11-12)	Elementry (1-8)	All (Class 1-12)
<b>All Social Groups</b>	<b>279,725</b>	<b>145,715</b>	<b>80,456</b>	<b>59,562</b>	<b>425,440</b>	<b>565,458</b>
General	124,730	66,509	37,751	29,394	191,239	258,384
Schedule Castes (SC)	43,283	22,114	11,159	7,818	65,397	84,374
Schedule Tribes (ST)	6,175	2,625	1,196	804	8,800	10,800
Other Backward Classes (OBC)	105,537	54,467	30,350	21,546	160,004	211,900
Muslim	44,005	18,877	8,780	4,822	62,882	76,484
Nomadic Tribes (NT)	52,873	27,510	14,995	10,562	80,383	105,940
Vimukat Jatis (VJ)	18,969	7,824	3,760	2,550	26,793	33,103
Special Backward Classes (SBC)	1,319	740	463	765	2,059	3,287
Bouddhist Minority	1,141	477	198	379	1,618	2,195
Parshi Minority	31	32	15	17	63	95
Christan Minority	39	26	11	7	65	83
Sikh Minority	55	21	1	10	76	87
Jain Minority	416	261	178	80	677	935
B. P. L.	24,581	6,334	1,732	1,366	30,915	34,013
Children with Special Needs (C.W.S.N.)	5,621	1,531	455	477	7,152	8,084

## 5.2- Mediumwise Enrolment

Indicator (Number of Mediumwise schools )	Govt. and Local bodies	Pvt. Aided	Pvt. Unaided	Un-recognised	Total
Marathi	206,136	267,938	35,247	119	509,440
English	96	1,405	17,395	0	18,896
Hindi	0	1,476	0	0	1,476
Urdu	3,747	27,640	4,259	0	35,646
Bangali	0	0	0	0	0
Gujrati	0	0	0	0	0
Kannada	0	0	0	0	0
Sindhi	0	0	0	0	0
Tamil	0	0	0	0	0
Telgu	0	0	0	0	0
<b>Total</b>	<b>209,979</b>	<b>298,459</b>	<b>56,901</b>	<b>119</b>	<b>565,458</b>
School size (Distribution of schools by Enrolment)	Govt. and Local bodies	Pvt. Aided	Pvt. Unaided	Un-recognised	Total
Less than 10	49	1	5	0	55
11-20	398	4	10	0	412
21-30	344	9	11	0	364
31-60	518	18	50	0	586
61-150	531	72	124	1	728
More than 150	475	532	125	0	1,132

## 6- Gender Gap in Enrolment (in %)

Indicator	Primary (1-5)	Upper Primary (6-8)	Secondary (9-10)	Higher Secondary (11-12)	Elementry (1-8)	All (Class 1-12)
All Social Groups	7.25	6.87	13.32	18.56	7.12	9.21
General	8.10	6.82	11.03	15.30	7.65	9.02
Schedule Castes (SC)	3.87	6.20	14.74	21.59	4.66	7.56
Schedule Tribes (ST)	6.04	13.14	22.24	24.88	8.16	10.96
Other Backward Classes (OBC)	7.71	6.90	15.31	15.03	7.33	10.19
Muslim	1.98	0.97	6.36	-4.48	1.68	1.83
Nomadic Tribes (NT)	7.40	6.37	13.77	22.63	7.05	9.55
Vimukat Jatis (VJ)	8.83	14.14	23.94	35.92	10.38	13.89
Special Backward Classes (SBC)	9.63	3.24	14.90	14.90	7.33	10.19
Bouddhist Minority	7.10	12.79	19.19	33.51	8.78	13.99
Parshi Minority	-29.03	-75.00	-73.33	52.94	-52.38	-36.84
Christan Minority	-2.56	23.08	45.45	42.86	7.69	15.66
Sikh Minority	16.36	14.29	100.00	40.00	15.79	19.54
Jain Minority	12.02	18.01	13.48	-7.50	14.33	12.30
B. P. L.	4.70	0.00	8.20	35.58	3.74	5.24
Children with Special Needs (C.W.S.N.)	18.73	17.18	14.73	9.85	7.69	17.69
No. of clusters having gender gap > 10 %	31	39	80	77	32	48
No. of Block having gender gap > 10 %	1	2	7	11	2	5

## 7- Teacher

(Norms as specified in the schedule under section 19 and 23 of the RTE Act)

Indicators	Govt. and Local bodies	Pvt. Aided	Pvt. Unaided	Un-recognised	Total	
Number of Teachers	Male	6,574	7,121	1,447	4	15,146
	Female	3,112	1,724	838	1	5,675
	<b>Total</b>	<b>9,686</b>	<b>8,845</b>	<b>2,285</b>	<b>5</b>	<b>20,821</b>
Percentage of female teachers to total teachers	32.1	19.5	36.7	20.0	27.3	
Schools without a female teacher	<b>Number</b>	<b>1,081</b>	<b>179</b>	<b>66</b>	<b>0</b>	<b>1,326</b>
	%	46.7	28.1	20.3	0.0	40.5

## 7.1- Mediumwise Teacher

Medium	Govt. and Local bodies	Pvt. Aided	Pvt. Unaided	Un-recognised	Total
Marathi	9,519	7,943	1,303	5	18,770
English	8	43	806	0	857
Hindi	0	54	0	0	54
Urdu	159	805	176	0	1,140
Bangali	0	0	0	0	0
Gujrati	0	0	0	0	0
Kannada	0	0	0	0	0
Sindhi	0	0	0	0	0
Tamil	0	0	0	0	0
Telgu	0	0	0	0	0
<b>Total</b>	<b>9,686</b>	<b>8,845</b>	<b>2,285</b>	<b>5</b>	<b>20,821</b>

## 7.2- Castewise Teacher

Caste	Govt. and Local bodies	Pvt. Aided	Pvt. Unaided	Un-recognised	Total	
All	9,686	8,845	2,285	5	20,821	
Genral	3,727	4,569	1,136	0	9,432	
SC	1,258	940	260	0	2,458	
ST	646	273	60	0	979	
OBC	1,488	1,252	258	3	3,001	
VJ	909	714	287	1	1,911	
NT	537	377	91	0	1,005	
SBC	221	81	12	0	314	
NT-B	89	49	12	0	150	
NT-C	152	22	22	0	196	
NT-D	560	102	102	0	764	
Indicators		Govt. and Local bodies	Pvt. Aided	Pvt. Unaided	Un-recognised	Total
Schools with single teacher	Number	10	0	1	0	11
	%	0.4	0.0	0.3	0.0	0.3
PTR	Local Body-Only	Primary Section	Upper Primary Section	Secondary Section	Elementry Section	All (Class 1-12)
Pupil Teacher Ratio	24	29	22	26	26	27
Indicators		Govt. and Local bodies	Pvt. Aided	Pvt. Unaided	Un-recognised	Total
Primary schools having PTR more than 30	Number	174	38	24	0	236
	%	7.6	19.3	13.4	0.0	8.9
Upper Primary having PTR more than 35	Number	24	148	21	0	193
	%	3.2	27.3	10.1	0.0	12.9
Trained /Untrained Teacher	Primary Section	Upper Primary Section	Secondary Section	Higher Secondary Section	Elementry Section	All (Class 1-12)
Teacher All	9,528	6,668	3,055	1,570	16,196	20,821
Trained Teacher Number	9,398	6,543	3,000	1,533	15,941	20,474
%	98.6	98.1	98.2	97.6	98.4	98.3
Untrained Teacher All Number	130	125	55	37	255	347
%	1.4	1.9	1.8	2.4	1.6	1.7

## 8-Efficiency indicators

### 8.1 Annual Average Drop-out Rate

Social Groups	Primary			UpperPrimary		
	Boys	Girls	Total	Boys	Girls	Total
<b>All Social Groups</b>	6.14	5.86	6.01	4.80	5.27	5.02
<b>General</b>	8.08	7.38	7.75	6.80	6.54	6.68
Schedule Castes (SC)	6.25	7.07	6.65	3.35	8.29	5.73
Schedule Tribes (ST)	0.69	1.35	1.00	5.77	5.55	5.68
Other Backward Classes (OBC)	3.23	3.05	3.14	2.57	2.07	2.34
Vimukat Jatis (VJ)	15.26	15.13	15.20	22.68	23.97	23.24
Nomadic Tribes (NT)	6.68	6.10	6.41	2.45	6.31	4.30
Special Backward Classes (SBC)	8.54	12.32	10.32	18.38	13.53	16.10
Muslim	11.89	11.17	11.54	15.84	12.42	14.18

### 8.2 Transition Rate

Social Groups	Primary			UpperPrimary		
	Boys	Girls	Total	Boys	Girls	Total
<b>All Social Groups</b>	93.6	93.7	93.7	92.8	91.2	92.0
General	90.3	91.9	91.0	91.1	89.3	90.3
Schedule Castes (SC)	94.4	91.5	93.0	91.7	87.2	89.5
Schedule Tribes (ST)	100.2	93.1	96.8	94.5	86.3	90.8
Other Backward Classes (OBC)	97.0	97.0	97.0	95.2	95.2	95.4
VJ / NT	113.4	113.6	113.5	111.3	118.1	114.4
Special Backward Classes (SBC)	95.7	82.1	88.7	85.7	91.5	88.6
Muslim	82.3	86.3	84.2	76.2	81.1	78.6

### 8.3 Gender Parity Index (GPI)

Social Groups	Primary Section	Upper Primary Section	Secondary Section	Higher Secondary Section	Elementary Section	All (Class 1-12)
<b>All Social Groups</b>	0.86	0.87	0.76	0.69	0.87	0.83
General	0.85	0.87	0.87	0.73	0.86	0.83
Schedule Castes (SC)	0.93	0.88	0.74	0.74	0.91	0.86
Schedule Tribes (ST)	0.89	0.77	0.64	0.60	0.85	0.80
Other Backward Classes (OBC)	0.86	0.87	0.73	0.64	0.86	0.82
Vimukat Jatis (VJ)	0.84	0.75	0.61	0.47	0.81	0.76
Nomadic Tribes (NT)	0.86	0.88	0.76	0.63	0.87	0.83
Special Backward Classes (SBC)	0.82	0.94	0.74	0.74	0.86	0.82
Muslim	0.96	0.98	0.88	1.09	0.97	0.96

### 8.4 Retention Rate

Social Groups	Primary			UpperPrimary		
	Boys	Girls	Total	Boys	Girls	Total
<b>All Social Groups</b>	78.49	80.41	79.38	89.66	89.66	88.82
General	78.30	78.42	78.36	85.73	85.73	85.05
Schedule Castes (SC)	77.41	77.00	77.21	90.04	84.36	87.29
Schedule Tribes (ST)	62.11	61.62	61.89	74.91	68.95	72.18
Other Backward Classes (OBC)	62.11	61.62	61.89	95.70	94.36	95.07
Muslim	69.82	77.05	79.38	71.56	76.49	88.82