



## District Profile

Based on Unified District Information System for Education (UDISE), 2012-13

District : Chandrapur

1 – Demographic (Source : Census of India,2011)

	Male	Female	Person	Sex Ratio	Child Sex Ratio (0-6 years)
Population	1,120,316	1,073,946	2,194,262		
Literacy rate	88.7	73.7	81.4	959	945

2- Number of Schools by Management and Category

Indicator (Number of schools )	Govt. and Local bodies	Pvt. Aided	Pvt. Unaided	Un-recognised	Total
Primary (1-4)	1,059	47	104	12	1,222
Primary with Upper Primary (1-7)	595	80	64	2	741
Pri,Upper,Secondary with Hsecondary (1 to 12)	6	4	12	0	22
Only Upper Primary	0	1	0	0	1
Upper,Secondary with Hsecondary (5 to 12)	5	103	5	0	113
Primary,Upperprimary with Secondary(1 to 10)	11	6	35	2	54
Upperprimary with Secondary(5 to 10)	13	102	8	0	123
Secondary Only (8 to 10)	8	86	45	0	139
Secondary with HSecondary(8 to 12)	0	23	8	0	31
Higher Secondary with college attached (11 to 12)	0	22	41	0	63
<b>Total</b>	<b>1,697</b>	<b>474</b>	<b>322</b>	<b>16</b>	<b>2,509</b>
Having Primary level classes	1,671	137	215	16	2,039
Having Upper Primary level classes	638	405	177	4	1,224
Having Secondary level classes	43	324	113	2	482
Having HigherSecondary level classes	11	152	66	0	229
Ratio of Primary to Upper Primary schools	State average				1.6
	District				1.7

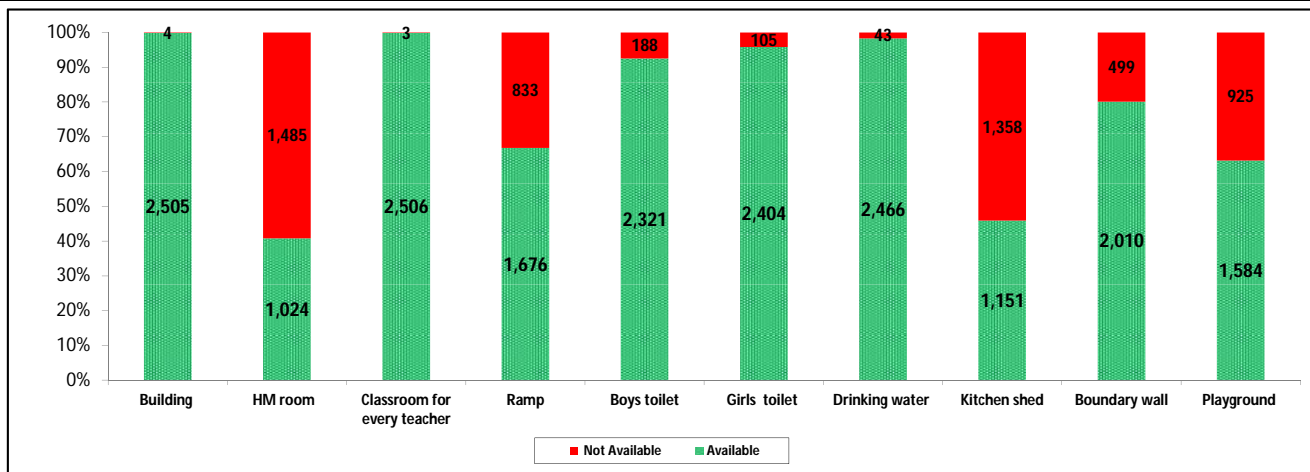
3 - Number of Mediumwise Schools by Management .

Indicator (Number of Mediumwise schools )	Govt. and Local bodies	Pvt. Aided	Pvt. Unaided	Un-recognised	Total
Marathi	1,654	442	127	2	2,225
English	3	2	184	14	203
Hindi	13	21	6	0	40
Urdu	12	3	4	0	19
Bangali	1	2	0	0	3
Gujrati	0	0	0	0	0
Kannada	0	0	0	0	0
Sindhi	0	0	0	0	0
Tamil	0	0	0	0	0
Telgu	14	4	1	0	19
<b>Total</b>	<b>1,697</b>	<b>474</b>	<b>322</b>	<b>16</b>	<b>2,509</b>

## 4 – Infrastructure

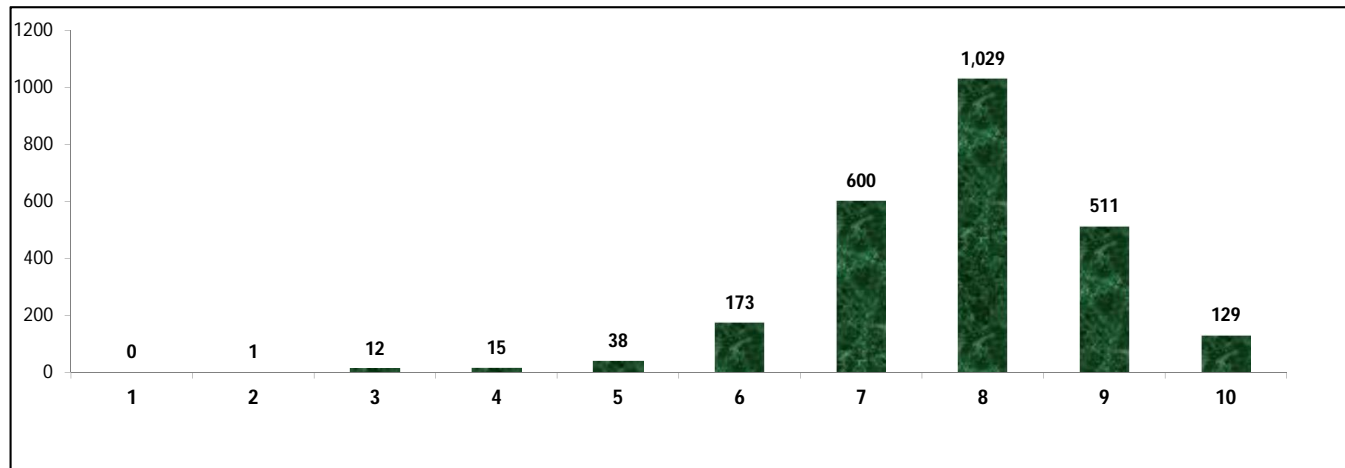
(Norms as specified in the schedule under section 19 of "The right of children to free and compulsory education act, 2009"( RTE Act ) )

### Status of Infrastructure Facilities in Schools (Numbers, All schools)



Indicator : Schools with infrastructure facilities available		Govt. and Local bodies	Pvt. Aided	Pvt. Unaided	Un-recognised	Total
<b>Total Schools</b>		<b>1697</b>	<b>474</b>	<b>322</b>	<b>16</b>	<b>2509</b>
1. Building	Number	1,693	474	322	16	2,505
	%	99.8	100.0	100.0	100.0	99.8
2. Office-cum-store-cum-HM room	Number	332	403	275	14	1,024
	%	19.6	85.0	85.4	87.5	40.8
3. One classroom for every teacher	Number	1,694	474	322	16	2,506
	%	99.8	100.0	100.0	100.0	99.9
4. Ramp	Number	1,579	62	34	1	1,676
	%	93.0	13.1	10.6	6.3	66.8
5. Separate toilet for boys	Number	1,590	429	288	14	2,321
	%	93.7	90.5	89.4	87.5	92.5
6. Separate toilet for girls	Number	1,618	466	305	15	2,404
	%	95.3	98.3	94.7	93.8	95.8
7. Drinking water facility	Number	1,658	472	320	16	2,466
	%	97.7	99.6	99.4	100.0	98.3
8. Kitchen shed	Number	963	185	3	0	1,151
	%	56.7	39.0	0.9	0.0	45.9
9. Boundary wall	Number	1,356	380	260	14	2,010
	%	79.9	80.2	80.7	87.5	80.1
10. Playground	Number	873	440	256	15	1,584
	%	51.4	92.8	79.5	93.8	63.1
<b>Indicators</b>		<b>Govt. and Local bodies</b>	<b>Pvt. Aided</b>	<b>Pvt. Unaided</b>	<b>Un-recognised</b>	<b>Total</b>
Number of classrooms(1 to 8)		6,631	2,693	1,785	96	11,205
Number of classrooms(9 to 10)		119	986	333	2	1,440
Number of classrooms(11 to 12)		37	569	0	0	606
<b>Student Classroom Ratio (SCR) Primary</b>		<b>18</b>	<b>UpperPri.</b>	<b>29</b>	<b>Elementry</b>	<b>26</b>
Primary schools having SCR more than 30	Number	67	27	10	0	104
	%	3.9	5.7	3.1	0.0	4.1
Upper Primary. schools having SCR more than 35	Number	15	240	35	0	290
	%	0.9	50.6	10.9	0.0	11.6
<b>Schools fulfilling "10" infrastructure norms for building under RTE</b>	Number	<b>105</b>	<b>24</b>	<b>0</b>	<b>0</b>	<b>129</b>
	%	6.2	5.1	0.0	0.0	5.1

**Number of schools by number of infrastructure elements complinace for building under RTE**



**5- Enrolment**

Number of students enrolled in		Govt. and Local bodies	Pvt. Aided	Pvt. Unaided	Un-recognised	Total
Primary Classes (1-5)	Boys	51,486	18,172	21,397	832	91,887
	Girls	51,061	16,927	16,821	612	85,421
	<b>Total</b>	<b>102,547</b>	<b>35,099</b>	<b>38,218</b>	<b>1,444</b>	<b>177,308</b>
Upper Primary Classes (6-8)	Boys	15,558	34,562	9,157	50	59,327
	Girls	15,414	31,245	6,654	51	53,364
	<b>Total</b>	<b>30,972</b>	<b>65,807</b>	<b>15,811</b>	<b>101</b>	<b>112,691</b>
Secondary Classes (9-10)	Boys	2,217	29,273	6,104	29	37,623
	Girls	1,994	28,362	4,533	18	34,907
	<b>Total</b>	<b>4,211</b>	<b>57,635</b>	<b>10,637</b>	<b>47</b>	<b>72,530</b>
Higher Secondary Classes (11-12)	Boys	470	20,074	4,137	0	24,681
	Girls	474	21,197	3,895	0	25,566
	<b>Total</b>	<b>944</b>	<b>41,271</b>	<b>8,032</b>	<b>0</b>	<b>50,247</b>
Elementary Classes (1-8)	<b>Boys</b>	<b>67,044</b>	<b>52,734</b>	<b>30,554</b>	<b>882</b>	<b>151,214</b>
	<b>Girls</b>	<b>66,475</b>	<b>48,172</b>	<b>23,475</b>	<b>663</b>	<b>138,785</b>
	<b>Total</b>	<b>133,519</b>	<b>100,906</b>	<b>54,029</b>	<b>1,545</b>	<b>289,999</b>
All Classes (1-12)	Boys	69,731	102,081	40,795	911	213,518
	Girls	68,943	97,731	31,903	681	199,258
	<b>Total</b>	<b>138,674</b>	<b>199,812</b>	<b>72,698</b>	<b>1,592</b>	<b>412,776</b>

**5.1- Castewise Enrolment**

Indicator	Primary (1-5)	Upper Primary (6-8)	Secondary (9-10)	Higher Sec. (11-12)	Elementry (1-8)	All (Class 1-12)
<b>All Social Groups</b>	<b>177,308</b>	<b>112,691</b>	<b>72,530</b>	<b>50,247</b>	<b>289,999</b>	<b>412,776</b>
<b>General</b>	15,985	9,075	5,657	4,204	25,060	34,921
<b>Schedule Castes (SC)</b>	29,381	19,271	12,785	10,006	48,652	71,443
<b>Schedule Tribes (ST)</b>	34,389	21,385	13,294	7,633	55,774	76,701
<b>Other Backward Classes (OBC)</b>	97,553	62,960	40,794	28,404	160,513	229,711
<b>Muslim</b>	8,344	4,877	2,827	1,432	13,221	17,480
<b>Nomadic Tribes (NT)</b>	20,186	12,801	7,629	4,300	32,987	44,916
<b>Vimukat Jatis (VJ)</b>	3,462	1,910	1,036	796	5,372	7,204
<b>Special Backward Classes (SBC)</b>	2,959	1,846	1,072	973	4,805	6,850
<b>Bouddhist Minority</b>	8,502	3,625	1,790	835	12,127	14,752
<b>Parshi Minority</b>	28	21	11	7	49	67
<b>Christan Minority</b>	405	228	132	66	633	831
<b>Sikh Minority</b>	369	308	221	53	677	951
<b>Jain Minority</b>	181	85	57	66	266	389
<b>B. P. L.</b>	32,133	13,881	6,254	2,848	46,014	55,116
<b>Children with Special Needs (C.W.S.N.)</b>	3,291	1,523	496	83	4,814	5,393

## 5.2- Mediumwise Enrolment

Indicator (Number of Mediumwise schools )	Govt. and Local bodies	Pvt. Aided	Pvt. Unaided	Un-recognised	Total
Marathi	133,277	187,824	14,152	215	335,468
English	1,721	547	57,678	1,377	61,323
Hindi	2,170	9,289	681	0	12,140
Urdu	749	1,481	150	0	2,380
Bangali	18	469	0	0	487
Gujrati	0	0	0	0	0
Kannada	0	0	0	0	0
Sindhi	0	0	0	0	0
Tamil	0	0	0	0	0
Telgu	739	202	37	0	978
<b>Total</b>	<b>138,674</b>	<b>199,812</b>	<b>72,698</b>	<b>1,592</b>	<b>412,776</b>
School size (Distribution of schools by Enrolment)	Govt. and Local bodies	Pvt. Aided	Pvt. Unaided	Un-recognised	Total
Less than 10	100	3	4	0	107
11-20	276	3	12	1	292
21-30	244	4	18	1	267
31-60	320	8	56	4	388
61-150	468	106	114	8	696
More than 150	289	350	118	2	759

## 6- Gender Gap in Enrolment (in %)

Indicator	Primary (1-5)	Upper Primary (6-8)	Secondary (9-10)	Higher Secondary (11-12)	Elementry (1-8)	All (Class 1-12)
All Social Groups	3.65	5.29	3.74	-1.76	4.29	3.45
General	7.21	8.52	3.66	-1.33	7.69	5.95
Schedule Castes (SC)	3.18	4.50	4.79	-2.18	3.70	3.08
Schedule Tribes (ST)	2.68	4.32	3.73	1.22	3.31	3.17
Other Backward Classes (OBC)	3.54	5.40	3.43	-0.10	2.93	3.04
Muslim	2.52	1.54	3.22	-10.89	2.16	1.26
Nomadic Tribes (NT)	2.22	3.70	0.38	-2.37	2.79	1.89
Vimukat Jatis (VJ)	1.62	10.58	23.94	23.62	4.80	9.63
Special Backward Classes (SBC)	2.67	3.36	6.34	6.34	2.93	3.04
Bouddhist Minority	4.26	8.80	15.20	3.23	5.62	6.64
Parshi Minority	14.29	23.81	9.09	71.43	18.37	22.39
Christan Minority	0.74	6.14	-6.06	9.09	2.69	1.81
Sikh Minority	2.44	10.39	9.50	-5.66	6.06	6.20
Jain Minority	12.71	1.18	26.32	-6.06	9.02	9.00
B. P. L.	-2.25	1.52	-0.70	-6.04	-1.11	-1.32
Children with Special Needs (C.W.S.N.)	14.37	7.94	-0.40	1.20	2.69	11.00
No. of clusters having gender gap > 10 %	8	22	32	19	11	11
No. of Block having gender gap > 10 %	0	1	2	1	0	0

## 7- Teacher

(Norms as specified in the schedule under section 19 and 23 of the RTE Act)

Indicators	Govt. and Local bodies	Pvt. Aided	Pvt. Unaided	Un-recognised	Total
Number of Teachers	Male	4,593	4,329	841	9,782
	Female	2,231	1,501	1,767	5,511
	<b>Total</b>	<b>6,824</b>	<b>5,830</b>	<b>2,608</b>	<b>15,333</b>
Percentage of female teachers to total teachers	32.7	25.7	67.8	73.2	36.2
Schools without a female teacher	<b>Number</b>	<b>730</b>	<b>111</b>	<b>38</b>	<b>879</b>
	%	43.0	23.4	11.8	35.0

## 7.1- Mediumwise Teacher

Medium	Govt. and Local bodies	Pvt. Aided	Pvt. Unaided	Un-recognised	Total
Marathi	6,590	5,433	633	12	12,668
English	43	10	1,930	59	2,042
Hindi	79	305	26	0	410
Urdu	38	50	15	0	103
Bangali	2	14	0	0	16
Gujrati	0	0	0	0	0
Kannada	0	0	0	0	0
Sindhi	0	0	0	0	0
Tamil	0	0	0	0	0
Telgu	72	18	4	0	94
<b>Total</b>	<b>6,824</b>	<b>5,830</b>	<b>2,608</b>	<b>71</b>	<b>15,333</b>

## 7.2- Castewise Teacher

Caste	Govt. and Local bodies	Pvt. Aided	Pvt. Unaided	Un-recognised	Total	
All	6,824	5,830	2,608	71	15,333	
Genral	389	584	626	3	1,602	
SC	1,460	997	573	28	3,058	
ST	1,080	668	147	5	1,900	
OBC	2,891	2,843	911	22	6,667	
VJ	464	381	186	8	1,039	
NT	314	228	45	2	589	
SBC	148	78	53	1	280	
NT-B	0	0	0	0	0	
NT-C	0	0	0	0	0	
NT-D	0	0	0	0	0	
Indicators	Govt. and Local bodies	Pvt. Aided	Pvt. Unaided	Un-recognised	Total	
Schools with single teacher	Number	16	1	5	0	22
	%	0.9	0.2	1.6	0.0	0.9
PTR	Local Body-Only	Primary Section	Upper Primary Section	Secondary Section	Elementry Section	All (Class 1-12)
Pupil Teacher Ratio	20	27	21	30	24	27
Indicators	Govt. and Local bodies	Pvt. Aided	Pvt. Unaided	Un-recognised	Total	
Primary schools having PTR more than 30	Number	95	34	10	4	143
	%	5.7	24.8	4.7	25.0	7.0
Upper Primary having PTR more than 35	Number	27	65	15	0	107
	%	4.2	16.0	8.5	0.0	8.7
Trained /Untrained Teacher	Primary Section	Upper Primary Section	Secondary Section	Higher Secondary Section	Elementry Section	All (Class 1-12)
Teacher All	6,477	5,367	2,440	1,049	11,844	15,333
Trained Teacher Number	6,404	5,304	2,424	1,028	11,708	15,160
%	98.9	98.8	99.3	98.0	98.9	98.9
Untrained Teacher All Number	73	63	16	21	136	173
%	1.1	1.2	0.7	2.0	1.1	1.1

## 8-Efficiency indicators

### 8.1 Annual Average Drop-out Rate

Social Groups	Primary			UpperPrimary		
	Boys	Girls	Total	Boys	Girls	Total
<b>All Social Groups</b>	2.54	2.51	2.53	3.32	3.07	3.20
<b>General</b>	5.60	6.63	6.07	15.06	17.28	16.09
Schedule Castes (SC)	2.39	1.91	2.16	2.45	2.33	2.40
Schedule Tribes (ST)	4.34	4.45	4.39	5.03	5.05	5.04
Other Backward Classes (OBC)	1.34	1.24	1.29	0.95	0.19	0.59
Vimukat Jatis (VJ)	32.06	25.07	28.81	31.47	36.13	33.63
Nomadic Tribes (NT)	2.50	5.04	3.75	1.81	3.14	2.45
Special Backward Classes (SBC)	-6.93	-2.33	-4.64	4.70	6.11	5.38
Muslim	10.02	7.19	8.68	7.13	-0.97	3.31

### 8.2 Transition Rate

Social Groups	Primary			UpperPrimary		
	Boys	Girls	Total	Boys	Girls	Total
<b>All Social Groups</b>	96.6	97.1	96.8	95.8	95.6	95.7
General	91.4	92.5	91.9	83.1	78.6	81.0
Schedule Castes (SC)	96.4	98.4	97.4	98.2	95.9	97.1
Schedule Tribes (ST)	94.8	94.8	94.8	93.8	94.8	94.3
Other Backward Classes (OBC)	98.1	98.3	98.2	97.9	97.9	98.3
VJ / NT	107.4	108.7	108.0	112.2	115.2	113.7
Special Backward Classes (SBC)	117.0	110.0	113.4	88.6	92.7	90.6
Muslim	87.0	89.7	88.3	91.4	106.4	98.6

### 8.3 Gender Parity Index (GPI)

Social Groups	Primary Section	Upper Primary Section	Secondary Section	Higher Secondary Section	Elementary Section	All (Class 1-12)
<b>All Social Groups</b>	0.93	0.90	0.93	1.04	0.92	0.93
General	0.87	0.84	0.84	1.03	0.86	0.89
Schedule Castes (SC)	0.94	0.91	0.91	0.91	0.93	0.94
Schedule Tribes (ST)	0.95	0.92	0.93	0.98	0.94	0.94
Other Backward Classes (OBC)	0.93	0.90	0.93	1.05	0.92	0.94
Vimukat Jatis (VJ)	0.97	0.81	0.61	0.62	0.91	0.82
Nomadic Tribes (NT)	0.96	0.93	0.99	1.05	0.95	0.96
Special Backward Classes (SBC)	0.95	0.94	0.88	1.00	0.94	0.94
Muslim	0.95	0.97	0.94	1.24	0.96	0.98

### 8.4 Retention Rate

Social Groups	Primary			UpperPrimary		
	Boys	Girls	Total	Boys	Girls	Total
<b>All Social Groups</b>	97.99	95.43	96.76	95.85	95.85	95.82
General	92.28	87.64	90.10	84.67	84.67	87.30
Schedule Castes (SC)	96.00	100.50	98.16	97.36	96.57	96.98
Schedule Tribes (ST)	89.53	87.02	88.30	91.06	92.64	91.82
Other Backward Classes (OBC)	89.53	87.02	88.30	99.01	97.95	98.51
Muslim	88.75	83.10	96.76	94.63	116.67	95.82