



शिक्षणाचा अधिकार

सर्व शिक्षा अभियान
सारे लिंक्या, पुढे जाऊया

District Profile

Based on Unified District Information System for Education (UDISE), 2012-13

District : Dhule

1 – Demographic (Source : Census of India,2011)

	Male	Female	Person	Sex Ratio	Child Sex Ratio (0-6 years)
Population	1,055,669	993,112	2,048,781		
Literacy rate	82.6	66.2	74.6	941	876

2- Number of Schools by Management and Category

Indicator (Number of schools)	Govt. and Local bodies	Pvt. Aided	Pvt. Unaided	Un-recognised	Total
Primary (1-4)	1,067	87	61	1	1,216
Primary with Upper Primary (1-7)	96	96	27	0	219
Pri,Upper,Secondary with Hsecondary (1 to 12)	12	109	14	0	135
Only Upper Primary	1	0	1	0	2
Upper,Secondary with Hsecondary (5 to 12)	2	184	17	0	203
Primary,Upperprimary with Secondary(1 to 10)	5	37	5	0	47
Upperprimary with Secondary(5 to 10)	2	22	5	0	29
Secondary Only (8 to 10)	0	9	4	0	13
Secondary with HSecondary(8 to 12)	0	13	2	0	15
Higher Secondary with college attached (11 to 12)	0	2	0	0	2
Total	1,185	559	136	1	1,881
Having Primary level classes	1,180	329	107	1	1,617
Having Upper Primary level classes	118	470	75	0	663
Having Secondary level classes	21	374	47	0	442
Having HigherSecondary level classes	14	308	33	0	355
Ratio of Primary to Upper Primary schools	State average				1.6
	District				2.4

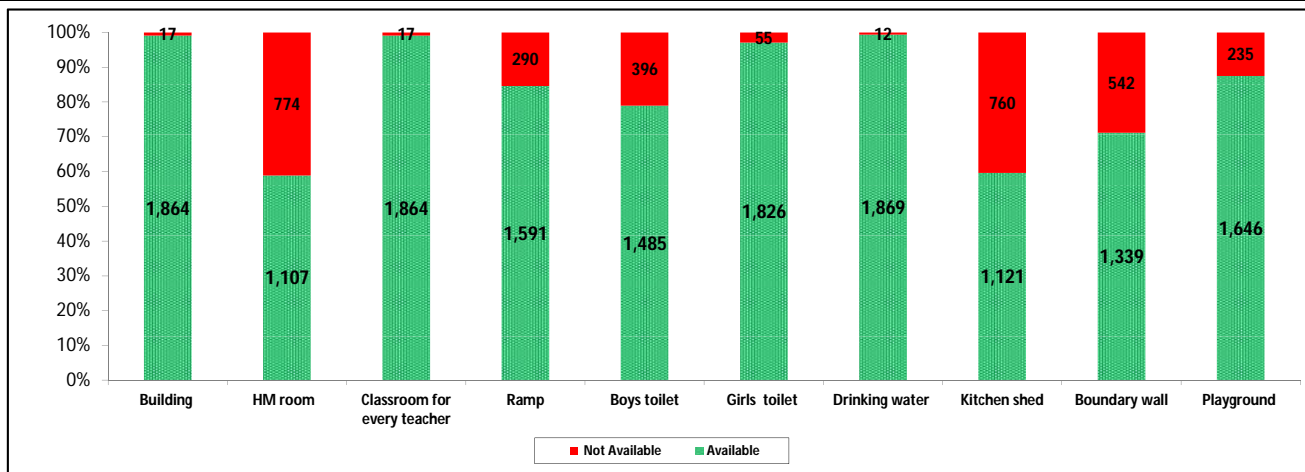
3 - Number of Mediumwise Schools by Management .

Indicator (Number of Mediumwise schools)	Govt. and Local bodies	Pvt. Aided	Pvt. Unaided	Un-recognised	Total
Marathi	1,141	516	61	0	1,718
English	4	2	68	1	75
Hindi	0	2	0	0	2
Urdu	39	39	7	0	85
Bangali	0	0	0	0	0
Gujrati	1	0	0	0	1
Kannada	0	0	0	0	0
Sindhi	0	0	0	0	0
Tamil	0	0	0	0	0
Telgu	0	0	0	0	0
Total	1,185	559	136	1	1,881

4 – Infrastructure

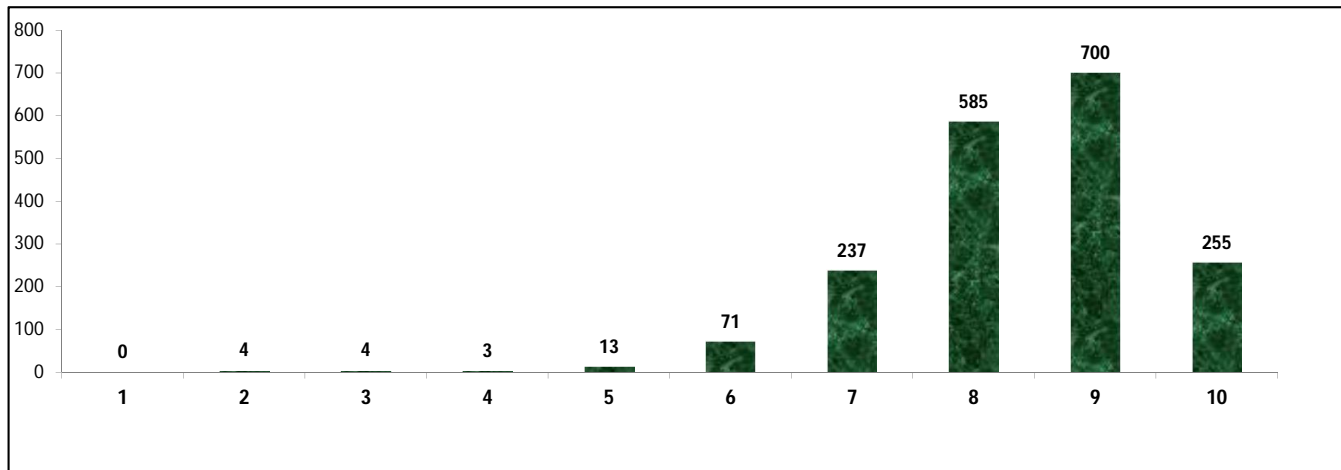
(Norms as specified in the schedule under section 19 of "The right of children to free and compulsory education act, 2009" (RTE Act))

Status of Infrastructure Facilities in Schools (Numbers, All schools)



Indicator : Schools with infrastructure facilities available		Govt. and Local bodies	Pvt. Aided	Pvt. Unaided	Un-recognised	Total
Total Schools		1185	559	136	1	1881
1. Building	Number	1,168	559	136	1	1,864
	%	98.6	100.0	100.0	100.0	99.1
2. Office-cum-store-cum-HM room	Number	481	508	117	1	1,107
	%	40.6	90.9	86.0	100.0	58.9
3. One classroom for every teacher	Number	1,168	559	136	1	1,864
	%	98.6	100.0	100.0	100.0	99.1
4. Ramp	Number	1,141	390	59	1	1,591
	%	96.3	69.8	43.4	100.0	84.6
5. Separate toilet for boys	Number	915	453	116	1	1,485
	%	77.2	81.0	85.3	100.0	78.9
6. Separate toilet for girls	Number	1,140	551	134	1	1,826
	%	96.2	98.6	98.5	100.0	97.1
7. Drinking water facility	Number	1,173	559	136	1	1,869
	%	99.0	100.0	100.0	100.0	99.4
8. Kitchen shed	Number	890	216	15	0	1,121
	%	75.1	38.6	11.0	0.0	59.6
9. Boundary wall	Number	764	463	111	1	1,339
	%	64.5	82.8	81.6	100.0	71.2
10. Playground	Number	989	531	125	1	1,646
	%	83.5	95.0	91.9	100.0	87.5
Indicators		Govt. and Local bodies	Pvt. Aided	Pvt. Unaided	Un-recognised	Total
Number of classrooms(1 to 8)		4,159	3,885	797	2	8,843
Number of classrooms(9 to 10)		48	957	80	0	1,085
Number of classrooms(11 to 12)		24	475	0	0	499
Student Classroom Ratio (SCR) Primary		29	UpperPri.	43	Elementry	36
Primary schools having SCR more than 30	Number	331	69	18	0	418
	%	27.9	12.3	13.2	0.0	22.2
Upper Primary. schools having SCR more than 35	Number	7	249	12	0	268
	%	0.6	44.5	8.8	0.0	14.2
Schools fulfilling "10" infrastructure norms for building under RTE	Number	142	109	4	0	255
	%	12.0	19.5	2.9	0.0	13.6

Number of schools by number of infrastructure elements complinace for building under RTE



5- Enrolment

Number of students enrolled in		Govt. and Local bodies	Pvt. Aided	Pvt. Unaided	Un-recognised	Total
Primary Classes (1-5)	Boys	55,307	47,023	10,290	11	112,631
	Girls	53,315	39,893	5,396	8	98,612
	Total	108,622	86,916	15,686	19	211,243
Upper Primary Classes (6-8)	Boys	3,878	52,191	3,622	0	59,691
	Girls	3,248	43,743	2,416	0	49,407
	Total	7,126	95,934	6,038	0	109,098
Secondary Classes (9-10)	Boys	1,447	31,070	2,069	0	34,586
	Girls	830	24,836	1,491	0	27,157
	Total	2,277	55,906	3,560	0	61,743
Higher Secondary Classes (11-12)	Boys	746	19,636	147	0	20,529
	Girls	633	15,927	68	0	16,628
	Total	1,379	35,563	215	0	37,157
Elementary Classes (1-8)	Boys	59,185	99,214	13,912	11	172,322
	Girls	56,563	83,636	7,812	8	148,019
	Total	115,748	182,850	21,724	19	320,341
All Classes (1-12)	Boys	61,378	149,920	16,128	11	227,437
	Girls	58,026	124,399	9,371	8	191,804
	Total	119,404	274,319	25,499	19	419,241

5.1- Castewise Enrolment

Indicator	Primary (1-5)	Upper Primary (6-8)	Secondary (9-10)	Higher Sec. (11-12)	Elementry (1-8)	All (Class 1-12)
All Social Groups	211,243	109,098	61,743	37,157	320,341	419,241
General	23,644	14,846	9,285	5,434	38,490	53,209
Schedule Castes (SC)	13,686	8,195	4,963	3,007	21,881	29,851
Schedule Tribes (ST)	88,090	33,941	14,462	6,492	122,031	142,985
Other Backward Classes (OBC)	85,823	52,116	33,033	22,224	137,939	193,196
Muslim	20,195	11,201	5,839	2,251	31,396	39,486
Nomadic Tribes (NT)	17,458	9,282	5,542	3,122	26,740	35,404
Vimukat Jatis (VJ)	3,783	2,146	1,161	673	5,929	7,763
Special Backward Classes (SBC)	2,139	2,182	1,372	1,028	4,321	6,721
Bouddhist Minority	265	153	83	21	418	522
Parshi Minority	24	23	13	19	47	79
Christan Minority	36	45	19	13	81	113
Sikh Minority	55	10	11	5	65	81
Jain Minority	664	370	308	102	1,034	1,444
B. P. L.	34,639	10,347	5,301	2,545	44,986	52,832
Children with Special Needs (C.W.S.N.)	2,659	1,383	742	92	4,042	4,876

5.2- Mediumwise Enrolment

Indicator (Number of Mediumwise schools)	Govt. and Local bodies	Pvt. Aided	Pvt. Unaided	Un-recognised	Total
Marathi	112,424	248,759	10,088	0	371,271
English	1,156	2,764	14,313	19	18,252
Hindi	0	206	0	0	206
Urdu	5,814	22,590	1,098	0	29,502
Bangali	0	0	0	0	0
Gujrati	10	0	0	0	10
Kannada	0	0	0	0	0
Sindhi	0	0	0	0	0
Tamil	0	0	0	0	0
Telgu	0	0	0	0	0
Total	119,404	274,319	25,499	19	419,241
School size (Distribution of schools by Enrolment)	Govt. and Local bodies	Pvt. Aided	Pvt. Unaided	Un-recognised	Total
Less than 10	27	0	0	0	27
11-20	95	0	4	1	100
21-30	141	2	3	0	146
31-60	279	10	34	0	323
61-150	395	52	40	0	487
More than 150	248	495	55	0	798

6- Gender Gap in Enrolment (in %)

Indicator	Primary (1-5)	Upper Primary (6-8)	Secondary (9-10)	Higher Secondary (11-12)	Elementry (1-8)	All (Class 1-12)
All Social Groups	6.64	9.43	12.03	10.50	7.59	8.50
General	5.54	1.35	4.51	1.77	3.92	3.81
Schedule Castes (SC)	3.36	4.31	11.46	3.76	3.72	5.01
Schedule Tribes (ST)	5.19	11.75	18.05	25.57	7.01	8.97
Other Backward Classes (OBC)	8.95	11.02	11.60	9.73	-2.89	0.43
Muslim	1.22	-1.08	-2.62	-1.64	0.40	-0.16
Nomadic Tribes (NT)	7.05	10.02	13.57	16.21	8.08	9.65
Vimukat Jatis (VJ)	9.91	12.30	10.08	28.97	10.78	12.25
Special Backward Classes (SBC)	0.89	-6.60	3.94	3.94	-2.89	0.43
Bouddhist Minority	7.92	4.58	8.43	-61.90	6.70	4.21
Parshi Minority	16.67	21.74	100.00	100.00	19.15	51.90
Christan Minority	33.33	2.22	26.32	23.08	16.05	18.58
Sikh Minority	12.73	-20.00	27.27	60.00	7.69	13.58
Jain Minority	4.22	5.95	20.13	27.45	4.84	9.70
B. P. L.	3.89	1.77	10.70	14.89	3.40	4.69
Children with Special Needs (C.W.S.N.)	26.51	20.17	27.76	34.78	16.05	25.06
No. of clusters having gender gap > 10 %	13	30	50	33	12	14
No. of Block having gender gap > 10 %	1	2	4	3	1	2

7- Teacher

(Norms as specified in the schedule under section 19 and 23 of the RTE Act)

Indicators	Govt. and Local bodies	Pvt. Aided	Pvt. Unaided	Un-recognised	Total
Number of Teachers	Male	2,625	5,433	497	8,555
	Female	1,747	1,835	448	4,034
	Total	4,372	7,268	945	12,589
Percentage of female teachers to total teachers	40.0	25.2	47.4	100.0	32.0
Schools without a female teacher	Number	429	91	16	536
	%	36.2	16.3	11.8	28.5

7.1- Mediumwise Teacher

Medium	Govt. and Local bodies	Pvt. Aided	Pvt. Unaided	Un-recognised	Total
Marathi	4,122	6,775	385	0	11,282
English	38	49	524	4	615
Hindi	0	16	0	0	16
Urdu	211	428	36	0	675
Bangali	0	0	0	0	0
Gujrati	1	0	0	0	1
Kannada	0	0	0	0	0
Sindhi	0	0	0	0	0
Tamil	0	0	0	0	0
Telgu	0	0	0	0	0
Total	4,372	7,268	945	4	12,589

7.2- Castewise Teacher

Caste	Govt. and Local bodies	Pvt. Aided	Pvt. Unaided	Un-recognised	Total	
All	4,372	7,268	945	4	12,589	
Genral	1,005	2,206	220	1	3,432	
SC	379	574	48	0	1,001	
ST	964	619	74	0	1,657	
OBC	1,354	3,187	480	2	5,023	
VJ	466	540	93	1	1,100	
NT	95	94	14	0	203	
SBC	106	43	16	0	165	
NT-B	0	0	0	0	0	
NT-C	0	0	0	0	0	
NT-D	0	0	0	0	0	
Indicators	Govt. and Local bodies	Pvt. Aided	Pvt. Unaided	Un-recognised	Total	
Schools with single teacher	Number	10	0	0	10	
	%	0.8	0.0	0.0	0.5	
PTR	Local Body-Only	Primary Section	Upper Primary Section	Secondary Section	Elementry Section	All (Class 1-12)
Pupil Teacher Ratio	27	33	26	40	30	33
Indicators	Govt. and Local bodies	Pvt. Aided	Pvt. Unaided	Un-recognised	Total	
Primary schools having PTR more than 30	Number	354	66	19	0	439
	%	30.0	20.1	17.8	0.0	27.1
Upper Primary having PTR more than 35	Number	16	103	9	0	128
	%	13.6	21.9	12.0	0.0	19.3
Trained /Untrained Teacher	Primary Section	Upper Primary Section	Secondary Section	Higher Secondary Section	Elementry Section	All (Class 1-12)
Teacher All	6,307	4,208	1,525	549	10,515	12,589
Trained Teacher Number	6,254	4,191	1,512	537	10,445	12,494
%	99.2	99.6	99.1	97.8	99.3	99.2
Untrained Teacher All Number	53	17	13	12	70	95
%	0.8	0.4	0.9	2.2	0.7	0.8

8-Efficiency indicators

8.1 Annual Average Drop-out Rate

Social Groups	Primary			UpperPrimary		
	Boys	Girls	Total	Boys	Girls	Total
All Social Groups	4.91	4.94	4.92	6.50	6.23	6.38
General	10.48	7.51	9.10	16.49	9.55	13.21
Schedule Castes (SC)	4.37	2.30	3.39	9.26	13.21	11.19
Schedule Tribes (ST)	6.28	8.01	7.10	11.67	12.31	11.95
Other Backward Classes (OBC)	-0.45	-1.24	-0.81	-2.92	-3.24	-3.06
Vimukat Jatis (VJ)	1.96	-6.29	-1.58	10.21	0.11	6.04
Nomadic Tribes (NT)	17.47	15.67	16.64	12.19	11.04	11.68
Special Backward Classes (SBC)	-12.25	-55.61	-30.85	14.87	-6.31	4.76
Muslim	8.55	8.09	8.32	14.06	9.37	11.75

8.2 Transition Rate

Social Groups	Primary			UpperPrimary		
	Boys	Girls	Total	Boys	Girls	Total
All Social Groups	96.1	93.4	94.8	92.8	92.8	92.8
General	89.0	92.6	90.7	83.6	87.7	85.6
Schedule Castes (SC)	98.3	98.3	98.3	92.9	86.3	89.6
Schedule Tribes (ST)	91.8	85.2	88.7	84.1	83.6	83.9
Other Backward Classes (OBC)	101.7	101.1	101.4	101.7	101.7	102.0
VJ / NT	113.2	106.6	110.2	118.0	113.9	116.2
Special Backward Classes (SBC)	171.5	272.9	212.9	99.7	103.0	101.4
Muslim	93.5	94.0	93.8	82.2	89.1	85.5

8.3 Gender Parity Index (GPI)

Social Groups	Primary Section	Upper Primary Section	Secondary Section	Higher Secondary Section	Elementary Section	All (Class 1-12)
All Social Groups	0.88	0.83	0.79	0.81	0.86	0.84
General	0.90	0.97	0.97	0.97	0.92	0.93
Schedule Castes (SC)	0.93	0.92	0.79	0.79	0.93	0.90
Schedule Tribes (ST)	0.90	0.79	0.69	0.59	0.87	0.84
Other Backward Classes (OBC)	0.84	0.80	0.79	0.83	0.82	0.82
Vimukat Jatis (VJ)	0.82	0.78	0.82	0.55	0.81	0.78
Nomadic Tribes (NT)	0.87	0.82	0.76	0.72	0.85	0.82
Special Backward Classes (SBC)	0.98	1.14	0.92	0.82	1.06	0.99
Muslim	0.98	1.02	1.05	1.03	0.99	1.00

8.4 Retention Rate

Social Groups	Primary			UpperPrimary		
	Boys	Girls	Total	Boys	Girls	Total
All Social Groups	85.93	82.75	84.44	93.82	93.82	93.04
General	78.32	79.03	78.66	81.42	81.42	86.36
Schedule Castes (SC)	87.46	83.91	85.75	91.55	92.07	91.80
Schedule Tribes (ST)	72.24	67.24	69.86	85.68	78.89	82.58
Other Backward Classes (OBC)	72.24	67.24	69.86	104.11	104.10	104.10
Muslim	85.22	84.20	84.44	91.45	95.12	93.04