



शिक्षणाचा अधिकार

सर्व शिक्षा अभियान  
सारे शिक्षक, पुढे जाऊया

# District Profile

Based on Unified District Information System for Education (UDISE), 2012-13

District : Gondiya

1 – Demographic (Source : Census of India,2011)

	Male	Female	Person	Sex Ratio	Child Sex Ratio (0-6 years)
Population	662,524	659,807	1,322,331		
Literacy rate	93.5	77.3	85.4	996	944

2- Number of Schools by Management and Category

Indicator (Number of schools )	Govt. and Local bodies	Pvt. Aided	Pvt. Unaided	Un-recognised	Total
Primary (1-4)	650	31	55	1	737
Primary with Upper Primary (1-7)	431	58	52	2	543
Pri,Upper,Secondary with Hsecondary (1 to 12)	7	0	4	0	11
Only Upper Primary	1	0	0	0	1
Upper,Secondary with Hsecondary (5 to 12)	17	78	7	0	102
Primary,Upperprimary with Secondary(1 to 10)	5	5	21	1	32
Upperprimary with Secondary(5 to 10)	12	45	8	0	65
Secondary Only (8 to 10)	0	54	20	0	74
Secondary with HSecondary(8 to 12)	1	28	4	0	33
Higher Secondary with college attached (11 to 12)	0	13	29	0	42
<b>Total</b>	<b>1,124</b>	<b>312</b>	<b>200</b>	<b>4</b>	<b>1,640</b>
Having Primary level classes	1,093	94	132	4	1,323
Having Upper Primary level classes	474	268	116	3	861
Having Secondary level classes	42	210	64	1	317
Having HigherSecondary level classes	25	119	44	0	188
Ratio of Primary to Upper Primary schools	State average				1.6
	District				1.5

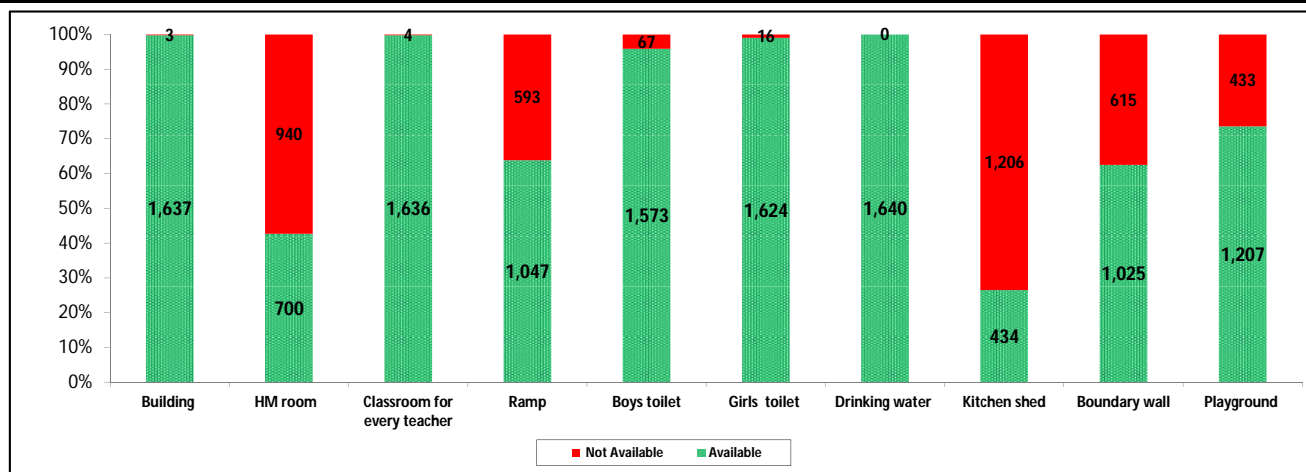
3 - Number of Mediumwise Schools by Management .

Indicator (Number of Mediumwise schools )	Govt. and Local bodies	Pvt. Aided	Pvt. Unaided	Un-recognised	Total
Marathi	963	264	77	0	1,304
English	2	2	104	4	112
Hindi	152	44	18	0	214
Urdu	0	2	1	0	3
Bangali	7	0	0	0	7
Gujrati	0	0	0	0	0
Kannada	0	0	0	0	0
Sindhi	0	0	0	0	0
Tamil	0	0	0	0	0
Telgu	0	0	0	0	0
<b>Total</b>	<b>1,124</b>	<b>312</b>	<b>200</b>	<b>4</b>	<b>1,640</b>

## 4 – Infrastructure

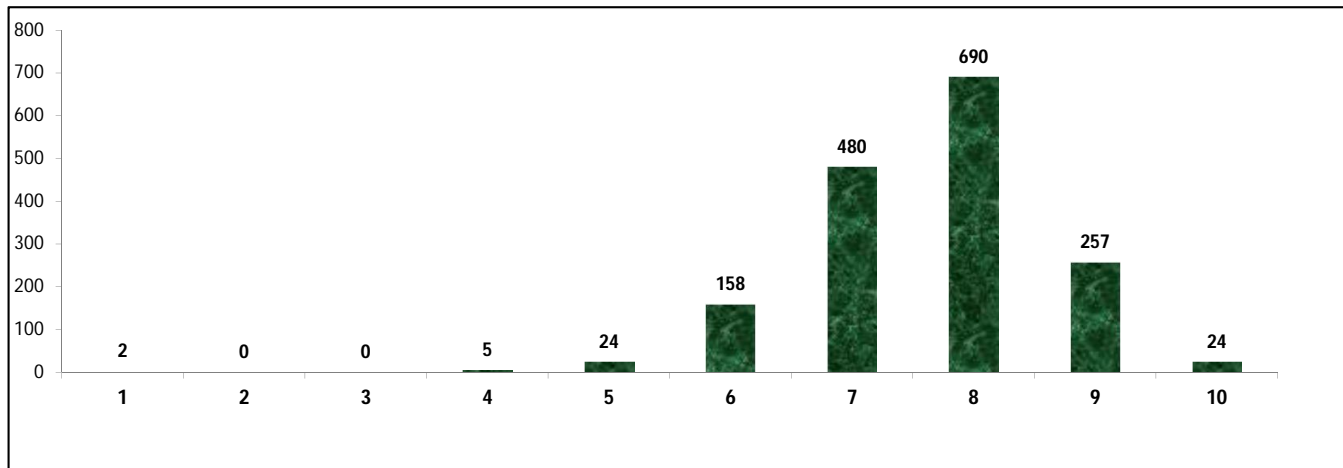
(Norms as specified in the schedule under section 19 of "The right of children to free and compulsory education act, 2009"( RTE Act ) )

### Status of Infrastructure Facilities in Schools (Numbers, All schools)



Indicator : Schools with infrastructure facilities available		Govt. and Local bodies	Pvt. Aided	Pvt. Unaided	Un-recognised	Total
<b>Total Schools</b>		<b>1124</b>	<b>312</b>	<b>200</b>	<b>4</b>	<b>1640</b>
1. Building	Number	1,121	312	200	4	1,637
	%	99.7	100.0	100.0	100.0	99.8
2. Office-cum-store-cum-HM room	Number	242	284	172	2	700
	%	21.5	91.0	86.0	50.0	42.7
3. One classroom for every teacher	Number	1,120	312	200	4	1,636
	%	99.6	100.0	100.0	100.0	99.8
4. Ramp	Number	1,010	21	16	0	1,047
	%	89.9	6.7	8.0	0.0	63.8
5. Separate toilet for boys	Number	1,095	284	190	4	1,573
	%	97.4	91.0	95.0	100.0	95.9
6. Separate toilet for girls	Number	1,110	312	199	3	1,624
	%	98.8	100.0	99.5	75.0	99.0
7. Drinking water facility	Number	1,124	312	200	4	1,640
	%	100.0	100.0	100.0	100.0	100.0
8. Kitchen shed	Number	278	148	8	0	434
	%	24.7	47.4	4.0	0.0	26.5
9. Boundary wall	Number	653	221	147	4	1,025
	%	58.1	70.8	73.5	100.0	62.5
10. Playground	Number	733	296	174	4	1,207
	%	65.2	94.9	87.0	100.0	73.6
<b>Indicators</b>		<b>Govt. and Local bodies</b>	<b>Pvt. Aided</b>	<b>Pvt. Unaided</b>	<b>Un-recognised</b>	<b>Total</b>
Number of classrooms(1 to 8)		4,268	1,620	998	29	6,915
Number of classrooms(9 to 10)		106	701	112	0	919
Number of classrooms(11 to 12)		65	415	0	0	480
<b>Student Classroom Ratio (SCR) Primary</b>		<b>17</b>	<b>UpperPri.</b>	<b>30</b>	<b>Elementry</b>	<b>27</b>
Primary schools having SCR more than 30	Number	53	16	4	0	73
	%	4.7	5.1	2.0	0.0	4.5
Upper Primary. schools having SCR more than 35	Number	25	163	25	0	213
	%	2.2	52.2	12.5	0.0	13.0
<b>Schools fulfilling "10" infrastructure norms for building under RTE</b>	Number	13	10	1	0	24
	%	1.2	3.2	0.5	0.0	1.5

**Number of schools by number of infrastructure elements complinace for building under RTE**



**5- Enrolment**

Number of students enrolled in		Govt. and Local bodies	Pvt. Aided	Pvt. Unaided	Un-recognised	Total
Primary Classes (1-5)	Boys	37,101	9,783	10,131	213	57,228
	Girls	37,304	9,315	7,952	168	54,739
	Total	74,405	19,098	18,083	381	111,967
Upper Primary Classes (6-8)	Boys	14,783	18,697	3,963	46	37,489
	Girls	14,644	17,984	3,322	23	35,973
	Total	29,427	36,681	7,285	69	73,462
Secondary Classes (9-10)	Boys	3,071	18,869	2,308	0	24,248
	Girls	2,801	18,730	2,148	0	23,679
	Total	5,872	37,599	4,456	0	47,927
Higher Secondary Classes (11-12)	Boys	1,890	13,372	2,784	0	18,046
	Girls	2,082	14,795	2,412	0	19,289
	Total	3,972	28,167	5,196	0	37,335
Elementary Classes (1-8)	Boys	51,884	28,480	14,094	259	94,717
	Girls	51,948	27,299	11,274	191	90,712
	Total	103,832	55,779	25,368	450	185,429
All Classes (1-12)	Boys	56,845	60,721	19,186	259	137,011
	Girls	56,831	60,824	15,834	191	133,680
	Total	113,676	121,545	35,020	450	270,691

**5.1- Castewise Enrolment**

Indicator	Primary (1-5)	Upper Primary (6-8)	Secondary (9-10)	Higher Sec. (11-12)	Elementry (1-8)	All (Class 1-12)
<b>All Social Groups</b>	<b>111,967</b>	<b>73,462</b>	<b>47,927</b>	<b>37,335</b>	<b>185,429</b>	<b>270,691</b>
General	6,786	4,087	2,746	2,292	10,873	15,911
Schedule Castes (SC)	14,372	9,716	6,438	5,353	24,088	35,879
Schedule Tribes (ST)	20,187	13,403	8,377	5,661	33,590	47,628
Other Backward Classes (OBC)	70,622	46,256	30,366	24,029	116,878	171,273
Muslim	2,422	1,317	870	501	3,739	5,110
Nomadic Tribes (NT)	8,288	5,523	3,013	1,935	13,811	18,759
Vimukat Jatis (VJ)	1,030	500	253	120	1,530	1,903
Special Backward Classes (SBC)	6,727	4,546	2,731	1,833	11,273	15,837
Bouddhist Minority	286	196	159	172	482	813
Parshi Minority	1	0	0	0	1	1
Christan Minority	24	16	9	6	40	55
Sikh Minority	126	55	33	24	181	238
Jain Minority	34	29	12	18	63	93
B. P. L.	45,839	27,265	14,135	7,316	73,104	94,555
Children with Special Needs (C.W.S.N.)	3,872	1,976	875	268	5,848	6,991

## 5.2- Mediumwise Enrolment

Indicator (Number of Mediumwise schools )	Govt. and Local bodies	Pvt. Aided	Pvt. Unaided	Un-recognised	Total
Marathi	94,718	95,604	9,968	0	200,290
English	369	1,173	22,213	450	24,205
Hindi	17,873	24,569	2,809	0	45,251
Urdu	0	199	30	0	229
Bangali	716	0	0	0	716
Gujrati	0	0	0	0	0
Kannada	0	0	0	0	0
Sindhi	0	0	0	0	0
Tamil	0	0	0	0	0
Telgu	0	0	0	0	0
<b>Total</b>	<b>113,676</b>	<b>121,545</b>	<b>35,020</b>	<b>450</b>	<b>270,691</b>
School size (Distribution of schools by Enrolment)	Govt. and Local bodies	Pvt. Aided	Pvt. Unaided	Un-recognised	Total
Less than 10	59	1	1	0	61
11-20	152	0	2	0	154
21-30	139	2	7	0	148
31-60	242	6	36	1	285
61-150	244	73	69	2	388
More than 150	288	230	85	1	604

## 6- Gender Gap in Enrolment (in %)

Indicator	Primary (1-5)	Upper Primary (6-8)	Secondary (9-10)	Higher Secondary (11-12)	Elementry (1-8)	All (Class 1-12)
All Social Groups	2.22	2.06	1.19	-3.33	2.16	1.23
General	3.95	3.25	6.55	-2.36	3.69	3.31
Schedule Castes (SC)	2.37	5.31	1.15	-0.43	3.55	2.53
Schedule Tribes (ST)	0.65	-0.95	-0.39	-2.99	0.01	-0.42
Other Backward Classes (OBC)	2.48	2.15	1.15	-9.87	0.68	-0.97
Muslim	1.32	-5.85	-4.14	-11.78	-1.20	-2.74
Nomadic Tribes (NT)	2.73	0.67	-3.95	-3.15	1.90	0.44
Vimukat Jatis (VJ)	4.85	2.00	11.46	-6.67	3.92	4.26
Special Backward Classes (SBC)	-0.97	3.12	-1.79	-1.79	0.68	-0.97
Bouddhist Minority	18.18	4.08	6.92	-3.49	12.45	8.00
Parshi Minority	100.00	0.00	0.00	0.00	100.00	100.00
Christan Minority	8.33	0.00	11.11	33.33	5.00	9.09
Sikh Minority	20.63	20.00	-9.09	-33.33	20.44	10.92
Jain Minority	11.76	24.14	33.33	0.00	17.46	16.13
B. P. L.	0.78	-0.25	-6.26	-15.01	0.40	-1.79
Children with Special Needs (C.W.S.N.)	15.65	11.64	0.11	-11.94	5.00	11.51
No. of clusters having gender gap > 10 %	1	5	7	10	0	1
No. of Block having gender gap > 10 %	0	0	0	0	0	0

## 7- Teacher

(Norms as specified in the schedule under section 19 and 23 of the RTE Act)

Indicators	Govt. and Local bodies	Pvt. Aided	Pvt. Unaided	Un-recognised	Total
Number of Teachers	Male	3,880	2,854	604	7,350
	Female	1,428	821	735	2,999
	<b>Total</b>	<b>5,308</b>	<b>3,675</b>	<b>1,339</b>	<b>10,349</b>
Percentage of female teachers to total teachers	26.9	22.3	54.9	55.6	29.0
Schools without a female teacher	<b>Number</b>	<b>500</b>	<b>66</b>	<b>21</b>	<b>0</b>
	%	44.5	21.2	10.5	0.0

## 7.1- Mediumwise Teacher

Medium	Govt. and Local bodies	Pvt. Aided	Pvt. Unaided	Un-recognised	Total
Marathi	4,463	2,961	447	0	7,871
English	24	21	797	27	869
Hindi	784	683	92	0	1,559
Urdu	0	10	3	0	13
Bangali	37	0	0	0	37
Gujrati	0	0	0	0	0
Kannada	0	0	0	0	0
Sindhi	0	0	0	0	0
Tamil	0	0	0	0	0
Telgu	0	0	0	0	0
<b>Total</b>	<b>5,308</b>	<b>3,675</b>	<b>1,339</b>	<b>27</b>	<b>10,349</b>

## 7.2- Castewise Teacher

Caste	Govt. and Local bodies	Pvt. Aided	Pvt. Unaided	Un-recognised	Total	
All	5,308	3,675	1,339	27	10,349	
Genral	291	389	187	7	874	
SC	957	660	236	6	1,859	
ST	429	238	78	3	748	
OBC	2,946	1,987	719	9	5,661	
VJ	261	193	49	0	503	
NT	118	85	16	0	219	
SBC	177	57	34	2	270	
NT-B	56	28	5	0	89	
NT-C	28	2	2	0	32	
NT-D	25	1	1	0	27	
Indicators	Govt. and Local bodies	Pvt. Aided	Pvt. Unaided	Un-recognised	Total	
Schools with single teacher	Number	21	1	0	0	22
	%	1.9	0.3	0.0	0.0	1.3
PTR	Local Body-Only	Primary Section	Upper Primary Section	Secondary Section	Elementry Section	All (Class 1-12)
Pupil Teacher Ratio	21	28	22	23	25	26
Indicators	Govt. and Local bodies	Pvt. Aided	Pvt. Unaided	Un-recognised	Total	
Primary schools having PTR more than 30	Number	51	19	6	1	77
	%	4.7	20.2	4.5	25.0	5.8
Upper Primary having PTR more than 35	Number	19	51	10	0	80
	%	4.0	19.0	8.6	0.0	9.3
Trained /Untrained Teacher	Primary Section	Upper Primary Section	Secondary Section	Higher Secondary Section	Elementry Section	All (Class 1-12)
Teacher All	3,977	3,364	2,103	905	7,341	10,349
Trained Teacher Number	3,943	3,343	2,088	875	7,286	10,249
%	99.1	99.4	99.3	96.7	99.3	99.0
Untrained Teacher All Number	34	21	15	30	55	100
%	0.9	0.6	0.7	3.3	0.7	1.0

## 8-Efficiency indicators

### 8.1 Annual Average Drop-out Rate

Social Groups	Primary			UpperPrimary		
	Boys	Girls	Total	Boys	Girls	Total
All Social Groups	2.07	1.34	1.72	2.07	1.39	1.74
General	-4.96	-9.55	-7.12	6.76	3.47	5.20
Schedule Castes (SC)	1.53	0.84	1.20	2.48	1.60	2.07
Schedule Tribes (ST)	6.91	4.50	5.73	4.21	3.43	3.82
Other Backward Classes (OBC)	1.14	1.24	1.19	0.68	0.35	0.52
Vimukat Jatis (VJ)	41.36	45.17	43.20	60.65	60.29	60.47
Nomadic Tribes (NT)	-10.78	-10.60	-10.69	-8.98	-11.50	-10.22
Special Backward Classes (SBC)	10.64	8.13	9.40	12.47	8.40	10.55
Muslim	7.27	3.71	5.53	11.30	-7.89	2.08

### 8.2 Transition Rate

Social Groups	Primary			UpperPrimary		
	Boys	Girls	Total	Boys	Girls	Total
All Social Groups	98.7	99.3	99.0	96.8	98.0	97.4
General	98.9	105.8	102.2	92.3	98.9	95.3
Schedule Castes (SC)	98.8	98.3	98.6	97.1	98.5	97.8
Schedule Tribes (ST)	94.9	98.1	96.5	94.0	94.8	94.4
Other Backward Classes (OBC)	99.8	99.3	99.6	98.0	98.0	98.4
VJ / NT	96.0	102.5	99.0	108.1	106.7	107.4
Special Backward Classes (SBC)	94.1	93.4	93.7	83.8	92.5	87.8
Muslim	86.2	90.0	88.1	72.3	101.9	85.6

### 8.3 Gender Parity Index (GPI)

Social Groups	Primary Section	Upper Primary Section	Secondary Section	Higher Secondary Section	Elementary Section	All (Class 1-12)
All Social Groups	0.96	0.96	0.98	1.07	0.96	0.98
General	0.92	0.94	0.94	1.05	0.93	0.94
Schedule Castes (SC)	0.95	0.90	0.98	0.98	0.93	0.95
Schedule Tribes (ST)	0.99	1.02	1.01	1.06	1.00	1.01
Other Backward Classes (OBC)	0.95	0.96	0.98	1.09	0.95	0.98
Vimukat Jatis (VJ)	0.91	0.96	0.79	1.14	0.92	0.92
Nomadic Tribes (NT)	0.95	0.99	1.08	1.07	0.96	0.99
Special Backward Classes (SBC)	1.02	0.94	1.04	1.22	0.99	1.02
Muslim	0.97	1.12	1.09	1.27	1.02	1.06

### 8.4 Retention Rate

Social Groups	Primary			UpperPrimary		
	Boys	Girls	Total	Boys	Girls	Total
All Social Groups	101.76	98.58	100.20	96.05	96.05	96.79
General	97.35	107.15	101.93	89.65	89.65	96.10
Schedule Castes (SC)	103.64	97.94	100.82	95.26	97.43	96.29
Schedule Tribes (ST)	86.73	92.36	89.44	93.67	94.71	94.20
Other Backward Classes (OBC)	86.73	92.36	89.44	97.59	98.61	98.09
Muslim	102.60	109.91	100.20	74.60	101.41	96.79