



शिक्षणाचा अधिकार

सर्व शिक्षा अभियान
सारे शिक्षक, पुढे जाऊया

District Profile

Based on Unified District Information System for Education (UDISE), 2012-13

District : Hingoli

1 – Demographic (Source : Census of India,2011)

	Male	Female	Person	Sex Ratio	Child Sex Ratio (0-6 years)
Population	609,386	569,587	1,178,973		
Literacy rate	86.7	64.7	76.0	935	868

2- Number of Schools by Management and Category

Indicator (Number of schools)	Govt. and Local bodies	Pvt. Aided	Pvt. Unaided	Un-recognised	Total
Primary (1-4)	345	23	28	0	396
Primary with Upper Primary (1-7)	497	43	28	0	568
Pri,Upper,Secondary with Hsecondary (1 to 12)	1	2	0	0	3
Only Upper Primary	0	0	0	0	0
Upper,Secondary with Hsecondary (5 to 12)	3	43	4	0	50
Primary,Upperprimary with Secondary(1 to 10)	4	3	4	0	11
Upperprimary with Secondary(5 to 10)	27	38	5	0	70
Secondary Only (8 to 10)	1	18	19	0	38
Secondary with HSecondary(8 to 12)	0	6	4	0	10
Higher Secondary with college attached (11 to 12)	0	6	26	0	32
Total	878	182	118	0	1,178
Having Primary level classes	847	71	60	0	978
Having Upper Primary level classes	533	153	64	0	750
Having Secondary level classes	36	110	36	0	182
Having HigherSecondary level classes	4	57	34	0	95
Ratio of Primary to Upper Primary schools	State average				1.6
	District				1.3

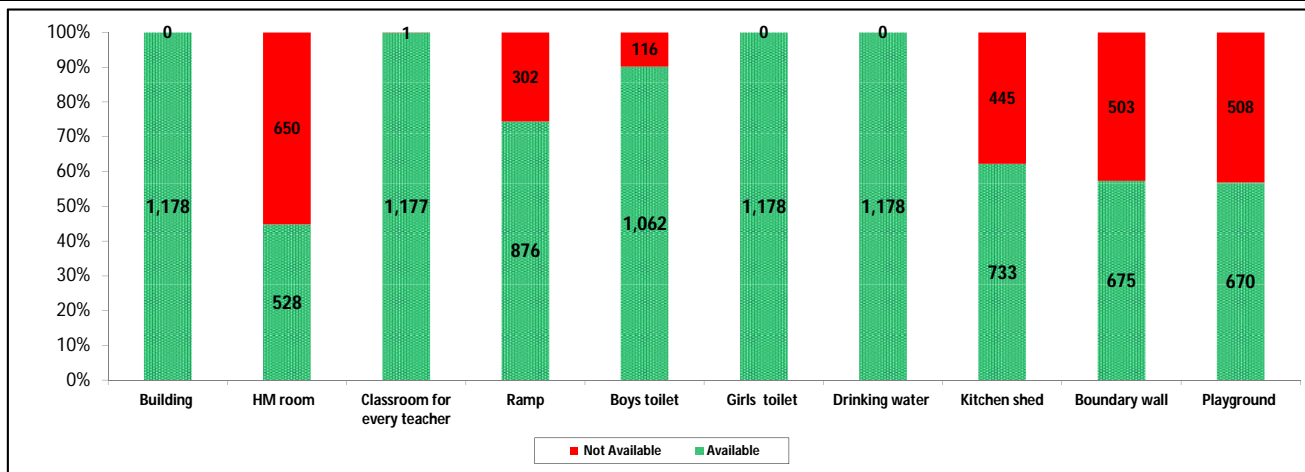
3 - Number of Mediumwise Schools by Management .

Indicator (Number of Mediumwise schools)	Govt. and Local bodies	Pvt. Aided	Pvt. Unaided	Un-recognised	Total
Marathi	870	164	72	0	1,106
English	1	0	31	0	32
Hindi	1	1	0	0	2
Urdu	6	17	15	0	38
Bangali	0	0	0	0	0
Gujrati	0	0	0	0	0
Kannada	0	0	0	0	0
Sindhi	0	0	0	0	0
Tamil	0	0	0	0	0
Telgu	0	0	0	0	0
Total	878	182	118	0	1,178

4 – Infrastructure

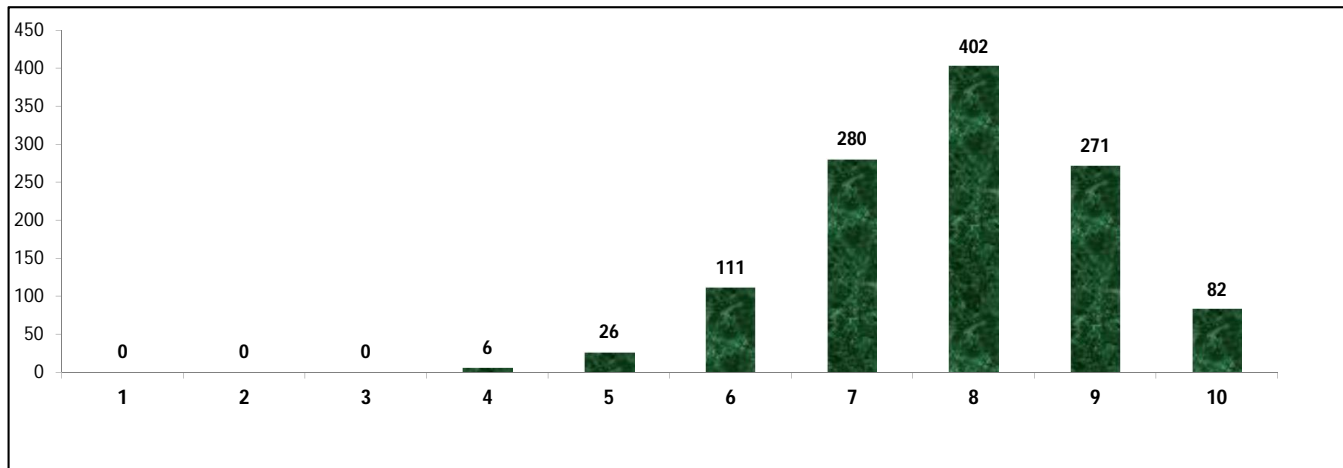
(Norms as specified in the schedule under section 19 of "The right of children to free and compulsory education act, 2009"(RTE Act))

Status of Infrastructure Facilities in Schools (Numbers, All schools)



Indicator : Schools with infrastructure facilities available		Govt. and Local bodies	Pvt. Aided	Pvt. Unaided	Un-recognised	Total
Total Schools		878	182	118	0	1178
1. Building	Number	878	182	118	0	1,178
	%	100.0	100.0	100.0	0.0	100.0
2. Office-cum-store-cum-HM room	Number	280	157	91	0	528
	%	31.9	86.3	77.1	0.0	44.8
3. One classroom for every teacher	Number	877	182	118	0	1,177
	%	99.9	100.0	100.0	0.0	99.9
4. Ramp	Number	792	40	44	0	876
	%	90.2	22.0	37.3	0.0	74.4
5. Separate toilet for boys	Number	812	153	97	0	1,062
	%	92.5	84.1	82.2	0.0	90.2
6. Separate toilet for girls	Number	878	182	118	0	1,178
	%	100.0	100.0	100.0	0.0	100.0
7. Drinking water facility	Number	878	182	118	0	1,178
	%	100.0	100.0	100.0	0.0	100.0
8. Kitchen shed	Number	657	69	7	0	733
	%	74.8	37.9	5.9	0.0	62.2
9. Boundary wall	Number	440	137	98	0	675
	%	50.1	75.3	83.1	0.0	57.3
10. Playground	Number	421	162	87	0	670
	%	47.9	89.0	73.7	0.0	56.9
Indicators		Govt. and Local bodies	Pvt. Aided	Pvt. Unaided	Un-recognised	Total
Number of classrooms(1 to 8)		4,219	1,322	432	0	5,973
Number of classrooms(9 to 10)		35	121	43	0	199
Number of classrooms(11 to 12)		2	97	0	0	99
Student Classroom Ratio (SCR) Primary		24	UpperPri.	34	Elementry	32
Primary schools having SCR more than 30	Number	68	10	10	0	88
	%	7.7	5.5	8.5	0.0	7.5
Upper Primary. schools having SCR more than 35	Number	9	34	8	0	51
	%	1.0	18.7	6.8	0.0	4.3
Schools fulfilling "10" infrastructure norms for building under RTE	Number	70	10	2	0	82
	%	8.0	5.5	1.7	0.0	7.0

Number of schools by number of infrastructure elements complinace for building under RTE



5- Enrolment

Number of students enrolled in		Govt. and Local bodies	Pvt. Aided	Pvt. Unaided	Un-recognised	Total
Primary Classes (1-5)	Boys	48,017	12,777	5,312	0	66,106
	Girls	46,745	10,550	3,481	0	60,776
	Total	94,762	23,327	8,793	0	126,882
Upper Primary Classes (6-8)	Boys	14,031	17,412	2,212	0	33,655
	Girls	15,055	14,624	1,702	0	31,381
	Total	29,086	32,036	3,914	0	65,036
Secondary Classes (9-10)	Boys	2,505	12,392	1,927	0	16,824
	Girls	2,322	9,497	1,475	0	13,294
	Total	4,827	21,889	3,402	0	30,118
Higher Secondary Classes (11-12)	Boys	129	6,028	2,284	0	8,441
	Girls	74	4,771	1,249	0	6,094
	Total	203	10,799	3,533	0	14,535
Elementary Classes (1-8)	Boys	62,048	30,189	7,524	0	99,761
	Girls	61,800	25,174	5,183	0	92,157
	Total	123,848	55,363	12,707	0	191,918
All Classes (1-12)	Boys	64,682	48,609	11,735	0	125,026
	Girls	64,196	39,442	7,907	0	111,545
	Total	128,878	88,051	19,642	0	236,571

5.1- Castewise Enrolment

Indicator	Primary (1-5)	Upper Primary (6-8)	Secondary (9-10)	Higher Sec. (11-12)	Elementry (1-8)	All (Class 1-12)
All Social Groups	126,882	65,036	30,118	14,535	191,918	236,571
General	46,324	24,367	11,612	5,779	70,691	88,082
Schedule Castes (SC)	24,749	13,243	6,353	2,901	37,992	47,246
Schedule Tribes (ST)	15,365	6,601	2,685	1,346	21,966	25,997
Other Backward Classes (OBC)	40,444	20,825	9,468	4,509	61,269	75,246
Muslim	17,079	8,304	3,329	1,130	25,383	29,842
Nomadic Tribes (NT)	13,572	7,081	3,005	1,085	20,653	24,743
Vimukat Jatis (VJ)	8,315	3,496	1,442	450	11,811	13,703
Special Backward Classes (SBC)	1,092	732	408	269	1,824	2,501
Bouddhist Minority	16,949	8,928	4,455	1,694	25,877	32,026
Parshi Minority	72	100	83	136	172	391
Christan Minority	6	5	8	3	11	22
Sikh Minority	43	5	0	0	48	48
Jain Minority	212	93	67	32	305	404
B. P. L.	14,937	3,971	819	157	18,908	19,884
Children with Special Needs (C.W.S.N.)	2,263	551	236	66	2,814	3,116

5.2- Mediumwise Enrolment

Indicator (Number of Mediumwise schools)	Govt. and Local bodies	Pvt. Aided	Pvt. Unaided	Un-recognised	Total
Marathi	127,210	79,799	13,517	0	220,526
English	40	0	3,858	0	3,898
Hindi	457	116	0	0	573
Urdu	1,171	8,136	2,267	0	11,574
Bangali	0	0	0	0	0
Gujrati	0	0	0	0	0
Kannada	0	0	0	0	0
Sindhi	0	0	0	0	0
Tamil	0	0	0	0	0
Telgu	0	0	0	0	0
Total	128,878	88,051	19,642	0	236,571
School size (Distribution of schools by Enrolment)	Govt. and Local bodies	Pvt. Aided	Pvt. Unaided	Un-recognised	Total
Less than 10	6	0	2	0	8
11-20	63	1	1	0	65
21-30	63	8	1	0	72
31-60	164	15	24	0	203
61-150	236	15	40	0	291
More than 150	346	143	50	0	539

6- Gender Gap in Enrolment (in %)

Indicator	Primary (1-5)	Upper Primary (6-8)	Secondary (9-10)	Higher Secondary (11-12)	Elementry (1-8)	All (Class 1-12)
All Social Groups	4.20	3.50	11.72	16.15	3.96	5.70
General	6.11	1.51	9.56	12.51	4.53	5.72
Schedule Castes (SC)	2.40	2.94	8.39	18.92	2.58	4.37
Schedule Tribes (ST)	3.57	4.98	22.76	38.78	4.00	7.74
Other Backward Classes (OBC)	3.35	5.70	13.48	-4.09	4.39	3.64
Muslim	2.25	4.14	4.18	-7.08	2.87	2.64
Nomadic Tribes (NT)	3.80	2.95	13.21	13.55	3.51	5.13
Vimukat Jatis (VJ)	3.24	9.73	18.17	21.78	5.16	7.07
Special Backward Classes (SBC)	4.58	4.10	5.39	5.39	4.39	3.64
Bouddhist Minority	2.22	-0.56	6.80	14.88	1.26	2.75
Parshi Minority	47.22	34.00	6.02	17.65	39.53	24.81
Christan Minority	33.33	-60.00	50.00	100.00	-9.09	27.27
Sikh Minority	6.98	-20.00	0.00	0.00	4.17	4.17
Jain Minority	0.00	-5.38	7.46	25.00	-1.64	1.98
B. P. L.	0.50	1.18	1.10	18.47	0.65	0.80
Children with Special Needs (C.W.S.N.)	22.85	27.40	71.19	9.09	-9.09	27.02
No. of clusters having gender gap > 10 %	2	7	30	33	4	9
No. of Block having gender gap > 10 %	0	0	3	4	0	0

7- Teacher

(Norms as specified in the schedule under section 19 and 23 of the RTE Act)

Indicators	Govt. and Local bodies	Pvt. Aided	Pvt. Unaided	Un-recognised	Total
Number of Teachers	Male	3,464	1,578	422	5,464
	Female	1,037	321	154	1,512
	Total	4,501	1,899	576	6,976
Percentage of female teachers to total teachers	23.0	16.9	26.7	0.0	21.7
Schools without a female teacher	Number	455	88	52	0
	%	51.8	48.4	44.1	0.0

7.1- Mediumwise Teacher

Medium	Govt. and Local bodies	Pvt. Aided	Pvt. Unaided	Un-recognised	Total
Marathi	4,434	1,698	384	0	6,516
English	3	0	127	0	130
Hindi	24	4	0	0	28
Urdu	40	197	65	0	302
Bangali	0	0	0	0	0
Gujrati	0	0	0	0	0
Kannada	0	0	0	0	0
Sindhi	0	0	0	0	0
Tamil	0	0	0	0	0
Telgu	0	0	0	0	0
Total	4,501	1,899	576	0	6,976

7.2- Castewise Teacher

Caste	Govt. and Local bodies	Pvt. Aided	Pvt. Unaided	Un-recognised	Total	
All	4,501	1,899	576	0	6,976	
Genral	1,771	909	279	0	2,959	
SC	690	254	99	0	1,043	
ST	372	124	23	0	519	
OBC	843	259	63	0	1,165	
VJ	440	193	79	0	712	
NT	209	114	12	0	335	
SBC	95	18	4	0	117	
NT-B	19	3	1	0	23	
NT-C	32	6	6	0	44	
NT-D	30	4	4	0	38	
Indicators		Govt. and Local bodies	Pvt. Aided	Pvt. Unaided	Un-recognised	Total
Schools with single teacher	Number	2	2	7	0	11
	%	0.2	1.1	5.9	0.0	0.9
PTR	Local Body-Only	Primary Section	Upper Primary Section	Secondary Section	Elementry Section	All (Class 1-12)
Pupil Teacher Ratio	29	36	26	51	32	34
Indicators		Govt. and Local bodies	Pvt. Aided	Pvt. Unaided	Un-recognised	Total
Primary schools having PTR more than 30	Number	81	13	9	0	103
	%	9.6	18.3	15.0	0.0	10.5
Upper Primary having PTR more than 35	Number	50	54	11	0	115
	%	9.4	35.3	17.2	0.0	15.3
Trained /Untrained Teacher	Primary Section	Upper Primary Section	Secondary Section	Higher Secondary Section	Elementry Section	All (Class 1-12)
Teacher All	3,555	2,482	591	348	6,037	6,976
Trained Teacher Number	3,541	2,377	567	335	5,918	6,820
%	99.6	95.8	95.9	96.3	98.0	97.8
Untrained Teacher All Number	14	105	24	13	119	156
%	0.4	4.2	4.1	3.7	2.0	2.2

8-Efficiency indicators

8.1 Annual Average Drop-out Rate

Social Groups	Primary			UpperPrimary		
	Boys	Girls	Total	Boys	Girls	Total
All Social Groups	3.85	2.90	3.40	2.62	3.32	2.96
General	11.04	8.73	9.96	11.24	8.10	9.72
Schedule Castes (SC)	6.21	6.88	6.54	6.05	6.84	6.44
Schedule Tribes (ST)	4.45	1.73	3.16	7.43	7.66	7.54
Other Backward Classes (OBC)	-10.43	-8.59	-9.53	-15.72	-8.88	-12.39
Vimukat Jatis (VJ)	11.41	13.82	12.58	19.07	22.11	20.47
Nomadic Tribes (NT)	16.54	14.29	15.45	9.89	8.05	9.01
Special Backward Classes (SBC)	5.71	-11.87	-2.11	-18.69	-35.52	-26.21
Muslim	3.42	-2.61	0.56	-6.87	-1.69	-4.32

8.2 Transition Rate

Social Groups	Primary			UpperPrimary		
	Boys	Girls	Total	Boys	Girls	Total
All Social Groups	95.3	95.7	95.5	91.9	87.8	89.9
General	86.3	90.0	88.0	83.7	82.2	83.0
Schedule Castes (SC)	94.5	91.0	92.7	88.9	87.9	88.4
Schedule Tribes (ST)	96.1	97.8	96.9	86.6	76.8	81.9
Other Backward Classes (OBC)	108.5	106.5	107.6	108.3	108.3	104.5
VJ / NT	120.0	124.1	122.0	114.7	123.1	118.5
Special Backward Classes (SBC)	140.7	145.8	143.2	117.9	159.5	134.7
Muslim	94.5	103.7	98.9	96.5	85.4	90.8

8.3 Gender Parity Index (GPI)

Social Groups	Primary Section	Upper Primary Section	Secondary Section	Higher Secondary Section	Elementry Section	All (Class 1-12)
All Social Groups	0.92	0.93	0.79	0.72	0.92	0.89
General	0.88	0.97	0.97	0.78	0.91	0.89
Schedule Castes (SC)	0.95	0.94	0.85	0.85	0.95	0.92
Schedule Tribes (ST)	0.93	0.91	0.63	0.44	0.92	0.86
Other Backward Classes (OBC)	0.94	0.89	0.76	0.78	0.92	0.89
Vimukat Jatis (VJ)	0.94	0.82	0.69	0.64	0.90	0.87
Nomadic Tribes (NT)	0.93	0.94	0.77	0.76	0.93	0.90
Special Backward Classes (SBC)	0.91	0.92	0.90	1.09	0.92	0.93
Muslim	0.96	0.92	0.92	1.15	0.94	0.95

8.4 Retention Rate

Social Groups	Primary			UpperPrimary		
	Boys	Girls	Total	Boys	Girls	Total
All Social Groups	84.84	87.21	85.97	89.45	89.45	88.18
General	79.33	83.30	81.20	79.23	79.23	80.73
Schedule Castes (SC)	81.96	88.73	85.18	85.40	84.39	84.91
Schedule Tribes (ST)	81.84	84.05	82.91	83.61	70.23	76.99
Other Backward Classes (OBC)	81.84	84.05	82.91	111.71	105.87	108.90
Muslim	83.17	92.49	85.97	89.63	88.48	88.18