



शिक्षणाचा अधिकार

सर्व शिक्षा अभियान  
सारे शिक्षक, पुढे जाऊया

# District Profile

Based on Unified District Information System for Education (UDISE), 2012-13

District : Jalgaon

1 – Demographic (Source : Census of India,2011)

	Male	Female	Person	Sex Ratio	Child Sex Ratio (0-6 years)
Population	2,197,835	2,026,607	4,224,442		
Literacy rate	88.0	70.9	79.7	922	829

2- Number of Schools by Management and Category

Indicator (Number of schools )	Govt. and Local bodies	Pvt. Aided	Pvt. Unaided	Un-recognised	Total
Primary (1-4)	1,416	109	115	8	1,648
Primary with Upper Primary (1-7)	553	115	70	2	740
Pri,Upper,Secondary with Hsecondary (1 to 12)	7	4	4	0	15
Only Upper Primary	0	0	0	0	0
Upper,Secondary with Hsecondary (5 to 12)	6	169	4	0	179
Primary,Upperprimary with Secondary(1 to 10)	13	19	22	3	57
Upperprimary with Secondary(5 to 10)	5	353	33	1	392
Secondary Only (8 to 10)	8	49	53	0	110
Secondary with HSecondary(8 to 12)	0	12	2	0	14
Higher Secondary with college attached (11 to 12)	0	19	4	0	23
<b>Total</b>	<b>2,008</b>	<b>849</b>	<b>307</b>	<b>14</b>	<b>3,178</b>
Having Primary level classes	1,989	247	211	13	2,460
Having Upper Primary level classes	592	721	188	6	1,507
Having Secondary level classes	39	606	118	4	767
Having HigherSecondary level classes	13	204	14	0	231
Ratio of Primary to Upper Primary schools	State average				1.6
	District				1.6

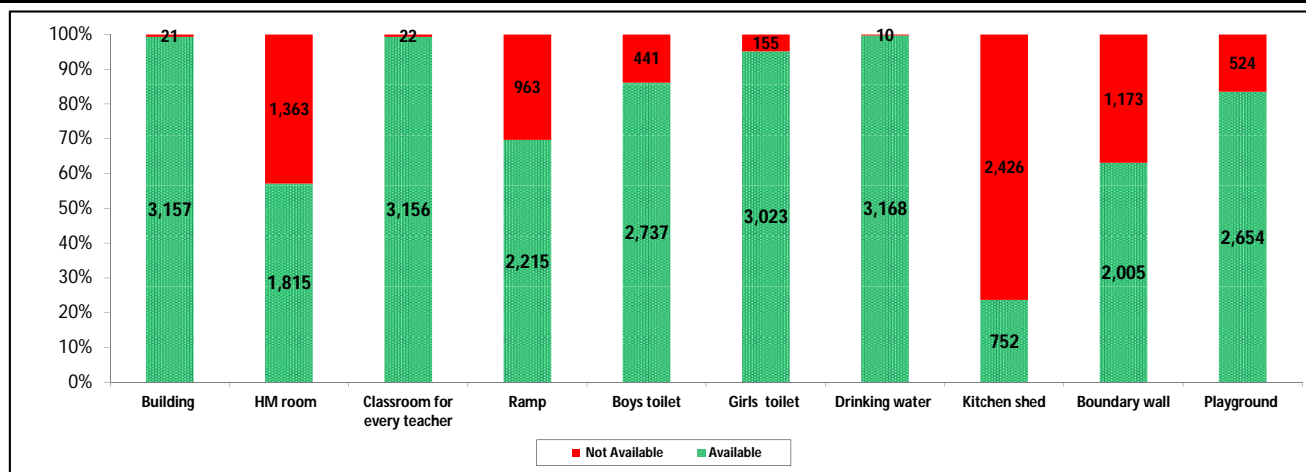
3 - Number of Mediumwise Schools by Management .

Indicator (Number of Mediumwise schools )	Govt. and Local bodies	Pvt. Aided	Pvt. Unaided	Un-recognised	Total
Marathi	1,758	772	139	4	2,673
English	6	2	136	10	154
Hindi	8	7	0	0	15
Urdu	236	66	31	0	333
Bangali	0	0	0	0	0
Gujrati	0	0	0	0	0
Kannada	0	0	0	0	0
Sindhi	0	2	1	0	3
Tamil	0	0	0	0	0
Telgu	0	0	0	0	0
<b>Total</b>	<b>2,008</b>	<b>849</b>	<b>307</b>	<b>14</b>	<b>3,178</b>

## 4 – Infrastructure

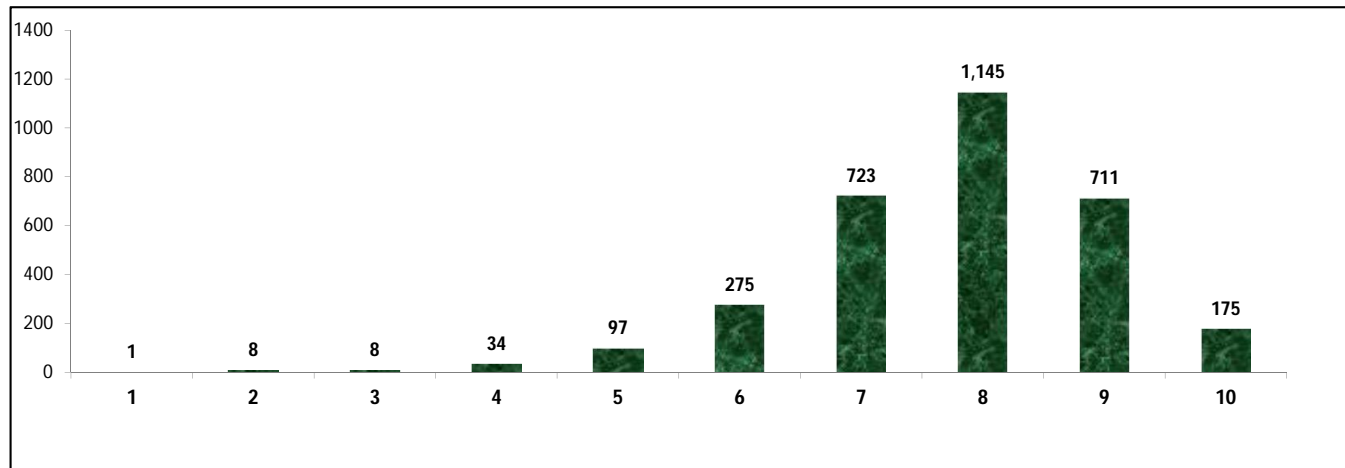
(Norms as specified in the schedule under section 19 of "The right of children to free and compulsory education act, 2009" ( RTE Act ) )

### Status of Infrastructure Facilities in Schools (Numbers, All schools)



Indicator : Schools with infrastructure facilities available		Govt. and Local bodies	Pvt. Aided	Pvt. Unaided	Un-recognised	Total
<b>Total Schools</b>		<b>2008</b>	<b>849</b>	<b>307</b>	<b>14</b>	<b>3178</b>
1. Building	Number	1,989	847	307	14	3,157
	%	99.1	99.8	100.0	100.0	99.3
2. Office-cum-store-cum-HM room	Number	835	714	253	13	1,815
	%	41.6	84.1	82.4	92.9	57.1
3. One classroom for every teacher	Number	1,989	848	305	14	3,156
	%	99.1	99.9	99.3	100.0	99.3
4. Ramp	Number	1,854	294	63	4	2,215
	%	92.3	34.6	20.5	28.6	69.7
5. Separate toilet for boys	Number	1,735	718	270	14	2,737
	%	86.4	84.6	87.9	100.0	86.1
6. Separate toilet for girls	Number	1,904	812	294	13	3,023
	%	94.8	95.6	95.8	92.9	95.1
7. Drinking water facility	Number	2,002	847	305	14	3,168
	%	99.7	99.8	99.3	100.0	99.7
8. Kitchen shed	Number	472	273	7	0	752
	%	23.5	32.2	2.3	0.0	23.7
9. Boundary wall	Number	1,116	632	245	12	2,005
	%	55.6	74.4	79.8	85.7	63.1
10. Playground	Number	1,585	783	273	13	2,654
	%	78.9	92.2	88.9	92.9	83.5
<b>Indicators</b>		<b>Govt. and Local bodies</b>	<b>Pvt. Aided</b>	<b>Pvt. Unaided</b>	<b>Un-recognised</b>	<b>Total</b>
Number of classrooms(1 to 8)		8,817	6,173	1,863	59	16,912
Number of classrooms(9 to 10)		95	1,408	165	6	1,674
Number of classrooms(11 to 12)		47	704	0	0	751
<b>Student Classroom Ratio (SCR) Primary</b>		<b>32</b>	<b>UpperPri.</b>	<b>43</b>	<b>Elementry</b>	<b>39</b>
Primary schools having SCR more than 30	Number	493	93	48	1	635
	%	24.6	11.0	15.6	7.1	20.0
Upper Primary. schools having SCR more than 35	Number	12	367	33	0	412
	%	0.6	43.2	10.7	0.0	13.0
<b>Schools fulfilling "10" infrastructure norms for building under RTE</b>	Number	103	71	1	0	175
	%	5.1	8.4	0.3	0.0	5.5

**Number of schools by number of infrastructure elements complinace for building under RTE**



**5- Enrolment**

Number of students enrolled in		Govt. and Local bodies	Pvt. Aided	Pvt. Unaided	Un-recognised	Total
Primary Classes (1-5)	Boys	116,959	81,307	32,515	668	231,449
	Girls	111,936	61,171	19,449	257	192,813
	<b>Total</b>	<b>228,895</b>	<b>142,478</b>	<b>51,964</b>	<b>925</b>	<b>424,262</b>
Upper Primary Classes (6-8)	Boys	18,222	101,726	10,303	165	130,416
	Girls	17,402	82,471	6,313	57	106,243
	<b>Total</b>	<b>35,624</b>	<b>184,197</b>	<b>16,616</b>	<b>222</b>	<b>236,659</b>
Secondary Classes (9-10)	Boys	3,510	65,064	6,088	42	74,704
	Girls	1,902	51,237	3,675	32	56,846
	<b>Total</b>	<b>5,412</b>	<b>116,301</b>	<b>9,763</b>	<b>74</b>	<b>131,550</b>
Higher Secondary Classes (11-12)	Boys	1,680	36,396	1,087	0	39,163
	Girls	1,236	29,782	413	0	31,431
	<b>Total</b>	<b>2,916</b>	<b>66,178</b>	<b>1,500</b>	<b>0</b>	<b>70,594</b>
Elementary Classes (1-8)	<b>Boys</b>	<b>135,181</b>	<b>183,033</b>	<b>42,818</b>	<b>833</b>	<b>361,865</b>
	<b>Girls</b>	<b>129,338</b>	<b>143,642</b>	<b>25,762</b>	<b>314</b>	<b>299,056</b>
	<b>Total</b>	<b>264,519</b>	<b>326,675</b>	<b>68,580</b>	<b>1,147</b>	<b>660,921</b>
All Classes (1-12)	Boys	140,371	284,493	49,993	875	475,732
	Girls	132,476	224,661	29,850	346	387,333
	<b>Total</b>	<b>272,847</b>	<b>509,154</b>	<b>79,843</b>	<b>1,221</b>	<b>863,065</b>

**5.1- Castewise Enrolment**

Indicator	Primary (1-5)	Upper Primary (6-8)	Secondary (9-10)	Higher Sec. (11-12)	Elementry (1-8)	All (Class 1-12)
<b>All Social Groups</b>	<b>424,262</b>	<b>236,659</b>	<b>131,550</b>	<b>70,594</b>	<b>660,921</b>	<b>863,065</b>
<b>General</b>	72,295	46,067	27,121	14,012	118,362	159,495
<b>Schedule Castes (SC)</b>	42,935	25,865	14,604	7,104	68,800	90,508
<b>Schedule Tribes (ST)</b>	96,795	38,918	16,010	6,285	135,713	158,008
<b>Other Backward Classes (OBC)</b>	212,237	125,809	73,815	43,193	338,046	455,054
<b>Muslim</b>	56,545	30,375	14,518	4,780	86,920	106,218
<b>Nomadic Tribes (NT)</b>	36,807	19,922	10,569	5,091	56,729	72,389
<b>Vimukat Jatis (VJ)</b>	20,974	9,675	4,558	2,562	30,649	37,769
<b>Special Backward Classes (SBC)</b>	4,235	3,152	1,927	1,703	7,387	11,017
<b>Bouddhist Minority</b>	6,604	3,011	1,656	949	9,615	12,220
<b>Parshi Minority</b>	20	9	12	24	29	65
<b>Christan Minority</b>	197	124	69	17	321	407
<b>Sikh Minority</b>	133	70	31	13	203	247
<b>Jain Minority</b>	968	599	425	728	1,567	2,720
<b>B. P. L.</b>	59,967	22,065	10,153	3,175	82,032	95,360
<b>Children with Special Needs (C.W.S.N.)</b>	3,747	1,523	707	94	5,270	6,071

## 5.2- Mediumwise Enrolment

Indicator (Number of Mediumwise schools )	Govt. and Local bodies	Pvt. Aided	Pvt. Unaided	Un-recognised	Total
Marathi	226,815	460,895	32,466	466	720,642
English	3,496	2,933	41,054	755	48,238
Hindi	2,170	6,961	0	0	9,131
Urdu	40,366	37,940	6,291	0	84,597
Bangali	0	0	0	0	0
Gujrati	0	0	0	0	0
Kannada	0	0	0	0	0
Sindhi	0	425	32	0	457
Tamil	0	0	0	0	0
Telgu	0	0	0	0	0
<b>Total</b>	<b>272,847</b>	<b>509,154</b>	<b>79,843</b>	<b>1,221</b>	<b>863,065</b>
School size (Distribution of schools by Enrolment)	Govt. and Local bodies	Pvt. Aided	Pvt. Unaided	Un-recognised	Total
Less than 10	12	0	8	0	20
11-20	62	0	5	1	68
21-30	170	2	8	2	182
31-60	413	7	26	5	451
61-150	649	60	98	4	811
More than 150	702	780	162	2	1,646

## 6- Gender Gap in Enrolment (in %)

Indicator	Primary (1-5)	Upper Primary (6-8)	Secondary (9-10)	Higher Secondary (11-12)	Elementry (1-8)	All (Class 1-12)
All Social Groups	9.11	10.21	13.58	10.95	9.50	10.24
General	7.03	6.82	8.13	6.37	6.95	7.10
Schedule Castes (SC)	5.00	7.33	13.72	13.82	5.87	7.76
Schedule Tribes (ST)	8.71	12.82	20.65	32.35	9.89	11.87
Other Backward Classes (OBC)	10.83	11.24	14.01	17.67	8.19	9.65
Muslim	3.06	4.11	8.20	-2.09	3.43	3.83
Nomadic Tribes (NT)	9.77	12.56	19.65	15.85	10.75	12.41
Vimukat Jatis (VJ)	13.46	17.19	26.55	-8.12	14.64	14.53
Special Backward Classes (SBC)	10.84	4.63	8.15	8.15	8.19	9.65
Bouddhist Minority	5.06	10.00	12.44	22.87	6.60	8.66
Parshi Minority	20.00	-11.11	0.00	-50.00	10.34	-13.85
Christan Minority	13.71	-1.61	24.64	-5.88	7.79	10.07
Sikh Minority	9.77	11.43	9.68	38.46	10.34	11.74
Jain Minority	12.60	13.19	17.65	10.16	12.83	12.87
B. P. L.	1.99	2.41	8.50	18.30	2.10	3.32
Children with Special Needs (C.W.S.N.)	23.99	23.31	20.79	25.53	7.79	23.47
No. of clusters having gender gap > 10 %	54	73	109	43	65	73
No. of Block having gender gap > 10 %	4	6	14	10	5	9

## 7- Teacher

(Norms as specified in the schedule under section 19 and 23 of the RTE Act)

Indicators	Govt. and Local bodies	Pvt. Aided	Pvt. Unaided	Un-recognised	Total
Number of Teachers	Male	6,263	8,335	970	15,612
	Female	3,205	2,815	1,221	7,276
	<b>Total</b>	<b>9,468</b>	<b>11,150</b>	<b>2,191</b>	<b>22,888</b>
Percentage of female teachers to total teachers	33.9	25.2	55.7	44.3	31.8
Schools without a female teacher	<b>Number</b>	<b>806</b>	<b>161</b>	<b>41</b>	<b>1,009</b>
	%	40.1	19.0	13.4	31.7

## 7.1- Mediumwise Teacher

Medium	Govt. and Local bodies	Pvt. Aided	Pvt. Unaided	Un-recognised	Total
Marathi	7,940	10,184	915	24	19,063
English	119	61	1,114	55	1,349
Hindi	57	180	0	0	237
Urdu	1,352	707	158	0	2,217
Bangali	0	0	0	0	0
Gujrati	0	0	0	0	0
Kannada	0	0	0	0	0
Sindhi	0	18	4	0	22
Tamil	0	0	0	0	0
Telgu	0	0	0	0	0
<b>Total</b>	<b>9,468</b>	<b>11,150</b>	<b>2,191</b>	<b>79</b>	<b>22,888</b>

## 7.2- Castewise Teacher

Caste	Govt. and Local bodies	Pvt. Aided	Pvt. Unaided	Un-recognised	Total	
All	9,468	11,150	2,191	79	22,888	
Genral	3,326	3,907	892	15	8,140	
SC	1,151	1,207	152	7	2,517	
ST	733	702	114	4	1,553	
OBC	3,039	4,276	860	47	8,222	
VJ	567	545	97	4	1,213	
NT	330	255	33	0	618	
SBC	239	159	25	1	424	
NT-B	24	16	1	1	42	
NT-C	34	4	4	0	42	
NT-D	9	1	1	0	11	
Indicators	Govt. and Local bodies	Pvt. Aided	Pvt. Unaided	Un-recognised	Total	
Schools with single teacher	Number	23	1	5	1	30
	%	1.1	0.1	1.6	7.1	0.9
PTR	Local Body-Only	Primary Section	Upper Primary Section	Secondary Section	Elementry Section	All (Class 1-12)
Pupil Teacher Ratio	29	40	33	33	37	38
Indicators	Govt. and Local bodies	Pvt. Aided	Pvt. Unaided	Un-recognised	Total	
Primary schools having PTR more than 30	Number	544	92	55	1	692
	%	27.4	37.2	26.1	7.7	28.1
Upper Primary having PTR more than 35	Number	66	257	28	0	351
	%	11.1	35.6	14.9	0.0	23.3
Trained /Untrained Teacher	Primary Section	Upper Primary Section	Secondary Section	Higher Secondary Section	Elementry Section	All (Class 1-12)
Teacher All	10,529	7,257	4,029	1,073	17,786	22,888
Trained Teacher Number	10,468	7,213	4,006	1,065	17,681	22,752
%	99.4	99.4	99.4	99.3	99.4	99.4
Untrained Teacher All Number	61	44	23	8	105	136
%	0.6	0.6	0.6	0.7	0.6	0.6

## 8-Efficiency indicators

### 8.1 Annual Average Drop-out Rate

Social Groups	Primary			UpperPrimary		
	Boys	Girls	Total	Boys	Girls	Total
<b>All Social Groups</b>	2.32	2.57	2.43	3.51	4.35	3.89
<b>General</b>	19.99	16.67	18.48	20.44	19.78	20.13
Schedule Castes (SC)	-0.45	1.79	0.62	-0.22	3.62	1.59
Schedule Tribes (ST)	5.12	6.29	5.66	4.90	9.09	6.77
Other Backward Classes (OBC)	-8.50	-8.17	-8.35	-6.46	-6.98	-6.69
Vimukat Jatis (VJ)	7.39	5.48	6.57	10.92	14.71	12.53
Nomadic Tribes (NT)	-0.37	1.70	0.58	4.40	4.99	4.66
Special Backward Classes (SBC)	-14.56	-10.17	-12.54	1.38	4.33	2.81
Muslim	0.88	2.28	1.56	4.90	4.00	4.47

### 8.2 Transition Rate

Social Groups	Primary			UpperPrimary		
	Boys	Girls	Total	Boys	Girls	Total
<b>All Social Groups</b>	95.7	94.9	95.3	94.9	92.9	94.0
General	81.4	87.7	84.3	78.7	78.3	78.5
Schedule Castes (SC)	99.3	95.6	97.5	99.3	94.2	96.9
Schedule Tribes (ST)	87.7	83.0	85.5	90.5	83.5	87.4
Other Backward Classes (OBC)	105.1	104.0	104.6	103.1	103.1	103.2
VJ / NT	111.0	111.7	111.3	111.9	115.1	113.2
Special Backward Classes (SBC)	137.3	145.5	140.9	94.5	105.5	99.6
Muslim	95.2	95.0	95.1	89.0	87.2	88.1

### 8.3 Gender Parity Index (GPI)

Social Groups	Primary Section	Upper Primary Section	Secondary Section	Higher Secondary Section	Elementary Section	All (Class 1-12)
<b>All Social Groups</b>	0.83	0.81	0.76	0.80	0.83	0.81
General	0.87	0.87	0.87	0.88	0.87	0.87
Schedule Castes (SC)	0.90	0.86	0.76	0.76	0.89	0.86
Schedule Tribes (ST)	0.84	0.77	0.66	0.51	0.82	0.79
Other Backward Classes (OBC)	0.80	0.80	0.75	0.84	0.80	0.80
Vimukat Jatis (VJ)	0.76	0.71	0.58	1.18	0.74	0.75
Nomadic Tribes (NT)	0.82	0.78	0.67	0.73	0.81	0.78
Special Backward Classes (SBC)	0.80	0.91	0.85	0.70	0.85	0.82
Muslim	0.94	0.92	0.85	1.04	0.93	0.93

### 8.4 Retention Rate

Social Groups	Primary			UpperPrimary		
	Boys	Girls	Total	Boys	Girls	Total
<b>All Social Groups</b>	94.16	94.10	94.13	96.68	96.68	95.12
General	80.03	86.74	83.06	70.35	70.35	70.44
Schedule Castes (SC)	94.21	93.51	93.88	105.58	97.78	101.95
Schedule Tribes (ST)	82.10	79.64	80.99	94.11	86.86	90.88
Other Backward Classes (OBC)	82.10	79.64	80.99	110.67	108.16	109.54
Muslim	109.61	112.48	94.13	95.51	89.43	95.12