



## District Profile

Based on Unified District Information System for Education (UDISE), 2012-13

District : Jalna

1 – Demographic (Source : Census of India,2011)

	Male	Female	Person	Sex Ratio	Child Sex Ratio (0-6 years)
Population	1,015,116	943,367	1,958,483		
Literacy rate	85.3	61.3	73.6	929	847

2- Number of Schools by Management and Category

Indicator (Number of schools )	Govt. and Local bodies	Pvt. Aided	Pvt. Unaided	Un-recognised	Total
Primary (1-4)	812	33	82	3	930
Primary with Upper Primary (1-7)	698	64	47	0	809
Pri,Upper,Secondary with Hsecondary (1 to 12)	0	1	2	0	3
Only Upper Primary	0	0	0	0	0
Upper,Secondary with Hsecondary (5 to 12)	2	80	9	0	91
Primary,Upperprimary with Secondary(1 to 10)	0	4	11	0	15
Upperprimary with Secondary(5 to 10)	48	77	34	0	159
Secondary Only (8 to 10)	0	15	37	0	52
Secondary with HSecondary(8 to 12)	0	11	6	0	17
Higher Secondary with college attached (11 to 12)	0	9	32	0	41
<b>Total</b>	<b>1,560</b>	<b>294</b>	<b>260</b>	<b>3</b>	<b>2,117</b>
Having Primary level classes	1,510	102	142	3	1,757
Having Upper Primary level classes	748	252	146	0	1,146
Having Secondary level classes	50	188	99	0	337
Having HigherSecondary level classes	2	101	49	0	152
Ratio of Primary to Upper Primary schools	State average				1.6
	District				1.5

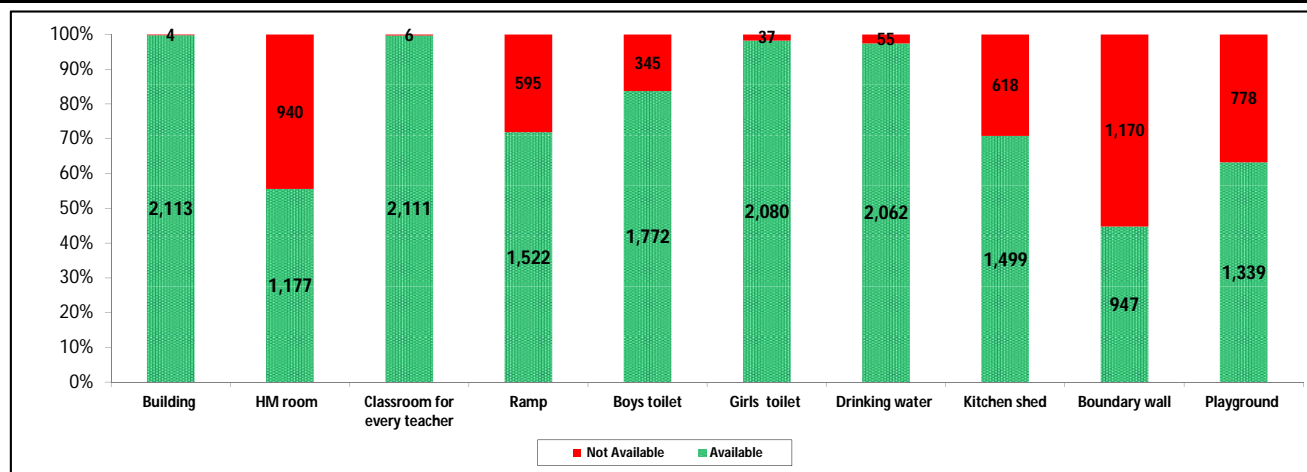
3 - Number of Mediumwise Schools by Management .

Indicator (Number of Mediumwise schools )	Govt. and Local bodies	Pvt. Aided	Pvt. Unaided	Un-recognised	Total
Marathi	1,541	249	132	2	1,924
English	6	1	79	1	87
Hindi	0	9	1	0	10
Urdu	13	35	48	0	96
Bangali	0	0	0	0	0
Gujrati	0	0	0	0	0
Kannada	0	0	0	0	0
Sindhi	0	0	0	0	0
Tamil	0	0	0	0	0
Telgu	0	0	0	0	0
<b>Total</b>	<b>1,560</b>	<b>294</b>	<b>260</b>	<b>3</b>	<b>2,117</b>

## 4 – Infrastructure

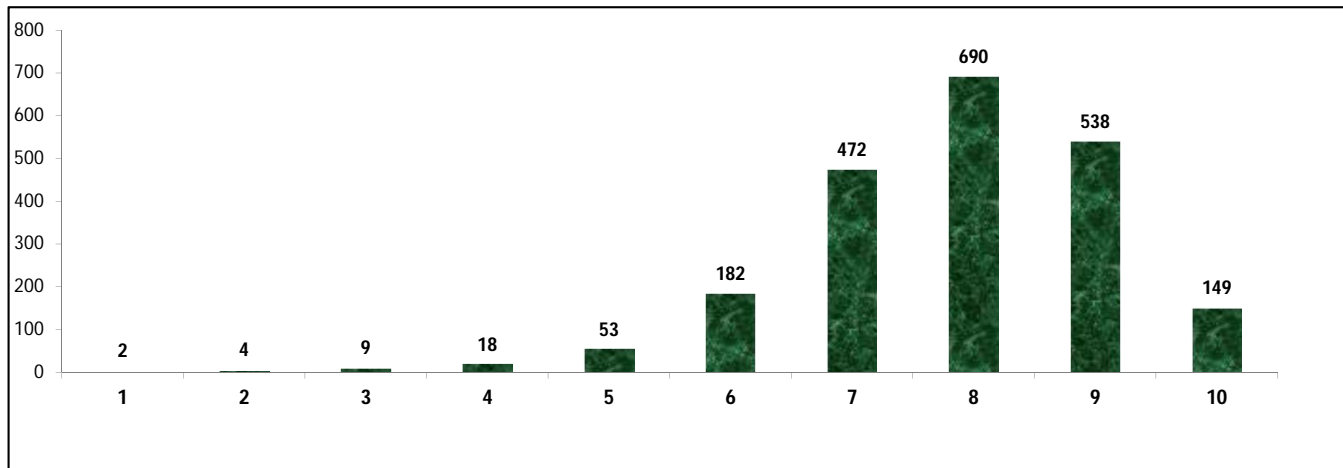
(Norms as specified in the schedule under section 19 of "The right of children to free and compulsory education act, 2009" ( RTE Act ) )

### Status of Infrastructure Facilities in Schools (Numbers, All schools)



Indicator : Schools with infrastructure facilities available		Govt. and Local bodies	Pvt. Aided	Pvt. Unaided	Un-recognised	Total
<b>Total Schools</b>		<b>1560</b>	<b>294</b>	<b>260</b>	<b>3</b>	<b>2117</b>
1. Building	Number	1,556	294	260	3	2,113
	%	99.7	100.0	100.0	100.0	99.8
2. Office-cum-store-cum-HM room	Number	672	275	227	3	1,177
	%	43.1	93.5	87.3	100.0	55.6
3. One classroom for every teacher	Number	1,554	294	260	3	2,111
	%	99.6	100.0	100.0	100.0	99.7
4. Ramp	Number	1,372	85	65	0	1,522
	%	87.9	28.9	25.0	0.0	71.9
5. Separate toilet for boys	Number	1,291	244	234	3	1,772
	%	82.8	83.0	90.0	100.0	83.7
6. Separate toilet for girls	Number	1,531	290	256	3	2,080
	%	98.1	98.6	98.5	100.0	98.3
7. Drinking water facility	Number	1,510	292	257	3	2,062
	%	96.8	99.3	98.8	100.0	97.4
8. Kitchen shed	Number	1,358	138	3	0	1,499
	%	87.1	46.9	1.2	0.0	70.8
9. Boundary wall	Number	561	202	181	3	947
	%	36.0	68.7	69.6	100.0	44.7
10. Playground	Number	855	260	221	3	1,339
	%	54.8	88.4	85.0	100.0	63.2
<b>Indicators</b>		<b>Govt. and Local bodies</b>	<b>Pvt. Aided</b>	<b>Pvt. Unaided</b>	<b>Un-recognised</b>	<b>Total</b>
Number of classrooms(1 to 8)		6,687	1,892	1,181	13	9,773
Number of classrooms(9 to 10)		123	580	223	0	926
Number of classrooms(11 to 12)		4	361	0	0	365
<b>Student Classroom Ratio (SCR) Primary</b>		<b>23</b>	<b>UpperPri.</b>	<b>36</b>	<b>Elementry</b>	<b>33</b>
Primary schools having SCR more than 30	Number	133	26	15	0	174
	%	8.5	8.8	5.8	0.0	8.2
Upper Primary. schools having SCR more than 35	Number	24	152	50	0	226
	%	1.5	51.7	19.2	0.0	10.7
<b>Schools fulfilling "10" infrastructure norms for building under RTE</b>	Number	125	22	2	0	149
	%	8.0	7.5	0.8	0.0	7.0

**Number of schools by number of infrastructure elements complinace for building under RTE**



**5- Enrolment**

Number of students enrolled in		Govt. and Local bodies	Pvt. Aided	Pvt. Unaided	Un-recognised	Total
Primary Classes (1-5)	Boys	73,120	23,355	14,711	83	111,269
	Girls	72,053	19,809	8,525	50	100,437
	Total	145,173	43,164	23,236	133	211,706
Upper Primary Classes (6-8)	Boys	18,878	31,025	7,090	0	56,993
	Girls	20,649	25,301	4,599	0	50,549
	Total	39,527	56,326	11,689	0	107,542
Secondary Classes (9-10)	Boys	2,919	19,871	5,031	0	27,821
	Girls	2,677	15,347	3,228	0	21,252
	Total	5,596	35,218	8,259	0	49,073
Higher Secondary Classes (11-12)	Boys	90	13,824	3,839	0	17,753
	Girls	60	8,932	2,408	0	11,400
	Total	150	22,756	6,247	0	29,153
Elementary Classes (1-8)	Boys	<b>91,998</b>	<b>54,380</b>	<b>21,801</b>	<b>83</b>	<b>168,262</b>
	Girls	<b>92,702</b>	<b>45,110</b>	<b>13,124</b>	<b>50</b>	<b>150,986</b>
	Total	<b>184,700</b>	<b>99,490</b>	<b>34,925</b>	<b>133</b>	<b>319,248</b>
All Classes (1-12)	Boys	95,007	88,075	30,671	83	213,836
	Girls	95,439	69,389	18,760	50	183,638
	Total	190,446	157,464	49,431	133	397,474

**5.1- Castewise Enrolment**

Indicator	Primary (1-5)	Upper Primary (6-8)	Secondary (9-10)	Higher Sec. (11-12)	Elementry (1-8)	All (Class 1-12)
<b>All Social Groups</b>	<b>211,706</b>	<b>107,542</b>	<b>49,073</b>	<b>29,153</b>	<b>319,248</b>	<b>397,474</b>
General	94,485	49,598	23,231	15,006	144,083	182,320
Schedule Castes (SC)	35,601	17,899	7,403	3,921	53,500	64,824
Schedule Tribes (ST)	6,564	3,019	1,456	662	9,583	11,701
Other Backward Classes (OBC)	75,056	37,026	16,983	9,564	112,082	138,629
Muslim	35,125	15,921	5,929	1,961	51,046	58,936
Nomadic Tribes (NT)	20,910	10,591	4,564	1,953	31,501	38,018
Vimukat Jatis (VJ)	20,444	8,375	3,579	1,331	28,819	33,729
Special Backward Classes (SBC)	2,256	931	606	328	3,187	4,121
Bouddhist Minority	11,791	5,480	2,330	990	17,271	20,591
Parshi Minority	59	39	36	35	98	169
Christan Minority	554	314	146	63	868	1,077
Sikh Minority	63	33	6	8	96	110
Jain Minority	922	195	136	79	1,117	1,332
B. P. L.	25,918	8,503	1,901	269	34,421	36,591
Children with Special Needs (C.W.S.N.)	2,591	766	208	51	3,357	3,616

## 5.2- Mediumwise Enrolment

Indicator (Number of Mediumwise schools )	Govt. and Local bodies	Pvt. Aided	Pvt. Unaided	Un-recognised	Total
Marathi	188,347	139,964	26,928	90	355,329
English	238	552	15,775	43	16,608
Hindi	0	4,311	188	0	4,499
Urdu	1,861	12,637	6,540	0	21,038
Bangali	0	0	0	0	0
Gujrati	0	0	0	0	0
Kannada	0	0	0	0	0
Sindhi	0	0	0	0	0
Tamil	0	0	0	0	0
Telgu	0	0	0	0	0
<b>Total</b>	<b>190,446</b>	<b>157,464</b>	<b>49,431</b>	<b>133</b>	<b>397,474</b>
School size (Distribution of schools by Enrolment)	Govt. and Local bodies	Pvt. Aided	Pvt. Unaided	Un-recognised	Total
Less than 10	24	0	5	0	29
11-20	176	0	8	0	184
21-30	191	3	14	0	208
31-60	287	6	35	3	331
61-150	398	18	86	0	502
More than 150	484	267	112	0	863

## 6- Gender Gap in Enrolment (in %)

Indicator	Primary (1-5)	Upper Primary (6-8)	Secondary (9-10)	Higher Secondary (11-12)	Elementry (1-8)	All (Class 1-12)
All Social Groups	5.12	5.99	13.39	21.79	5.41	7.60
General	5.88	4.83	11.02	17.85	5.52	7.23
Schedule Castes (SC)	2.67	7.00	17.33	29.20	4.12	7.14
Schedule Tribes (ST)	6.34	10.70	20.88	22.36	7.71	10.18
Other Backward Classes (OBC)	5.21	6.68	14.27	3.66	1.79	1.14
Muslim	1.51	7.38	12.84	5.35	3.34	4.36
Nomadic Tribes (NT)	5.69	5.07	17.44	30.36	5.48	8.20
Vimukat Jatis (VJ)	4.53	8.20	15.28	19.31	5.60	7.17
Special Backward Classes (SBC)	1.15	3.33	-3.63	-3.63	1.79	1.14
Bouddhist Minority	5.62	7.23	16.31	31.52	6.13	8.50
Parshi Minority	-1.69	2.56	38.89	65.71	0.00	21.89
Christan Minority	5.05	-4.46	-1.37	-14.29	1.61	0.28
Sikh Minority	-1.59	-15.15	0.00	25.00	-6.25	-3.64
Jain Minority	22.56	10.77	5.88	26.58	20.50	19.37
B. P. L.	5.12	5.94	10.78	1.12	5.32	5.57
Children with Special Needs (C.W.S.N.)	12.70	12.53	25.96	25.49	1.61	13.61
No. of clusters having gender gap > 10 %	9	15	68	49	8	19
No. of Block having gender gap > 10 %	0	1	8	7	0	0

## 7- Teacher

(Norms as specified in the schedule under section 19 and 23 of the RTE Act)

Indicators	Govt. and Local bodies	Pvt. Aided	Pvt. Unaided	Un-recognised	Total
Number of Teachers	Male	4,826	2,882	1,014	8,730
	Female	1,809	738	510	3,067
	<b>Total</b>	<b>6,635</b>	<b>3,620</b>	<b>1,524</b>	<b>11,797</b>
Percentage of female teachers to total teachers	27.3	20.4	33.5	55.6	26.0
Schools without a female teacher	<b>Number</b>	<b>812</b>	<b>105</b>	<b>98</b>	<b>1,016</b>
	%	52.1	35.7	37.7	48.0

## 7.1- Mediumwise Teacher

Medium	Govt. and Local bodies	Pvt. Aided	Pvt. Unaided	Un-recognised	Total
Marathi	6,568	3,192	743	9	10,512
English	15	26	539	9	589
Hindi	0	99	6	0	105
Urdu	52	303	236	0	591
Bangali	0	0	0	0	0
Gujrati	0	0	0	0	0
Kannada	0	0	0	0	0
Sindhi	0	0	0	0	0
Tamil	0	0	0	0	0
Telgu	0	0	0	0	0
<b>Total</b>	<b>6,635</b>	<b>3,620</b>	<b>1,524</b>	<b>18</b>	<b>11,797</b>

## 7.2- Castewise Teacher

Caste	Govt. and Local bodies	Pvt. Aided	Pvt. Unaided	Un-recognised	Total	
All	6,635	3,620	1,524	18	11,797	
Genral	2,803	1,956	857	15	5,631	
SC	873	399	160	1	1,433	
ST	350	125	42	0	517	
OBC	1,174	546	202	1	1,923	
VJ	633	314	163	1	1,111	
NT	314	158	46	0	518	
SBC	139	29	18	0	186	
NT-B	57	18	5	0	80	
NT-C	114	15	15	0	144	
NT-D	178	16	16	0	210	
Indicators	Govt. and Local bodies	Pvt. Aided	Pvt. Unaided	Un-recognised	Total	
Schools with single teacher	Number	33	0	5	0	38
	%	2.1	0.0	1.9	0.0	1.8
PTR	Local Body-Only	Primary Section	Upper Primary Section	Secondary Section	Elementry Section	All (Class 1-12)
Pupil Teacher Ratio	29	34	27	45	31	34
Indicators	Govt. and Local bodies	Pvt. Aided	Pvt. Unaided	Un-recognised	Total	
Primary schools having PTR more than 30	Number	169	26	23	0	218
	%	11.2	25.5	16.2	0.0	12.4
Upper Primary having PTR more than 35	Number	82	81	29	0	192
	%	11.0	32.1	19.9	0.0	16.8
Trained /Untrained Teacher	Primary Section	Upper Primary Section	Secondary Section	Higher Secondary Section	Elementry Section	All (Class 1-12)
Teacher All	6,158	4,044	1,090	505	10,202	11,797
Trained Teacher Number	5,904	4,011	1,077	500	9,915	11,492
%	95.9	99.2	98.8	99.0	97.2	97.4
Untrained Teacher All Number	254	33	13	5	287	305
%	4.1	0.8	1.2	1.0	2.8	2.6

## 8-Efficiency indicators

### 8.1 Annual Average Drop-out Rate

Social Groups	Primary			UpperPrimary		
	Boys	Girls	Total	Boys	Girls	Total
<b>All Social Groups</b>	3.97	3.84	3.91	5.81	7.98	6.84
<b>General</b>	5.01	5.70	5.33	7.40	9.92	8.62
Schedule Castes (SC)	4.14	2.91	3.54	5.54	9.21	7.28
Schedule Tribes (ST)	9.84	7.84	8.91	13.91	15.43	14.60
Other Backward Classes (OBC)	1.97	1.55	1.77	2.98	3.86	3.39
Vimukat Jatis (VJ)	12.69	12.76	12.72	9.16	13.09	11.01
Nomadic Tribes (NT)	1.37	1.85	1.60	10.24	10.20	10.22
Special Backward Classes (SBC)	-44.55	-54.40	-49.33	-2.56	-6.38	-4.37
Muslim	3.06	1.63	2.36	4.02	15.01	9.44

### 8.2 Transition Rate

Social Groups	Primary			UpperPrimary		
	Boys	Girls	Total	Boys	Girls	Total
<b>All Social Groups</b>	94.6	93.8	94.2	89.5	84.0	86.9
General	93.4	91.7	92.6	87.5	82.5	85.1
Schedule Castes (SC)	94.8	95.4	95.0	89.1	81.1	85.3
Schedule Tribes (ST)	85.4	89.1	87.1	91.8	84.8	88.7
Other Backward Classes (OBC)	97.0	96.1	96.6	92.3	92.3	90.1
VJ / NT	108.8	114.9	111.7	118.7	126.2	122.1
Special Backward Classes (SBC)	124.4	144.0	134.4	77.8	79.9	78.7
Muslim	94.9	90.6	92.8	88.2	70.2	79.4

### 8.3 Gender Parity Index (GPI)

Social Groups	Primary Section	Upper Primary Section	Secondary Section	Higher Secondary Section	Elementry Section	All (Class 1-12)
<b>All Social Groups</b>	0.90	0.89	0.76	0.64	0.90	0.86
General	0.89	0.91	0.91	0.70	0.90	0.87
Schedule Castes (SC)	0.95	0.87	0.70	0.70	0.92	0.87
Schedule Tribes (ST)	0.88	0.81	0.65	0.63	0.86	0.82
Other Backward Classes (OBC)	0.90	0.87	0.75	0.60	0.89	0.85
Vimukat Jatis (VJ)	0.91	0.85	0.73	0.68	0.89	0.87
Nomadic Tribes (NT)	0.89	0.90	0.70	0.53	0.90	0.85
Special Backward Classes (SBC)	0.98	0.94	1.08	0.93	0.96	0.98
Muslim	0.97	0.86	0.77	0.90	0.94	0.92

### 8.4 Retention Rate

Social Groups	Primary			UpperPrimary		
	Boys	Girls	Total	Boys	Girls	Total
<b>All Social Groups</b>	82.69	83.92	83.27	88.28	88.28	85.66
General	82.98	82.86	82.92	86.21	86.21	81.26
Schedule Castes (SC)	84.27	88.55	86.32	87.88	78.14	83.23
Schedule Tribes (ST)	65.77	75.10	69.91	100.36	87.90	94.66
Other Backward Classes (OBC)	65.77	75.10	69.91	90.35	87.03	88.81
Muslim	90.70	89.84	83.27	87.51	70.36	85.66