



शिक्षणाचा अधिकार

सर्व शिक्षा अभियान  
सारे शिक्षक, पुढे जाऊया

# District Profile

Based on Unified District Information System for Education (UDISE), 2012-13

District : Latur

1 – Demographic (Source : Census of India,2011)

	Male	Female	Person	Sex Ratio	Child Sex Ratio (0-6 years)
Population	1,276,262	1,179,281	2,455,543		
Literacy rate	87.4	70.0	79.0	924	872

2- Number of Schools by Management and Category

Indicator (Number of schools )	Govt. and Local bodies	Pvt. Aided	Pvt. Unaided	Un-recognised	Total
Primary (1-4)	669	126	77	0	872
Primary with Upper Primary (1-7)	607	257	80	0	944
Pri,Upper,Secondary with Hsecondary (1 to 12)	1	0	0	0	1
Only Upper Primary	0	0	1	0	1
Upper,Secondary with Hsecondary (5 to 12)	3	147	1	0	151
Primary,Upperprimary with Secondary(1 to 10)	47	5	17	0	69
Upperprimary with Secondary(5 to 10)	6	206	9	0	221
Secondary Only (8 to 10)	4	112	47	0	163
Secondary with HSecondary(8 to 12)	0	18	4	0	22
Higher Secondary with college attached (11 to 12)	0	31	17	0	48
<b>Total</b>	<b>1,337</b>	<b>902</b>	<b>253</b>	<b>0</b>	<b>2,492</b>
Having Primary level classes	1,324	388	174	0	1,886
Having Upper Primary level classes	668	745	159	0	1,572
Having Secondary level classes	61	488	78	0	627
Having HigherSecondary level classes	4	196	22	0	222
Ratio of Primary to Upper Primary schools	State average				1.6
	District				1.2

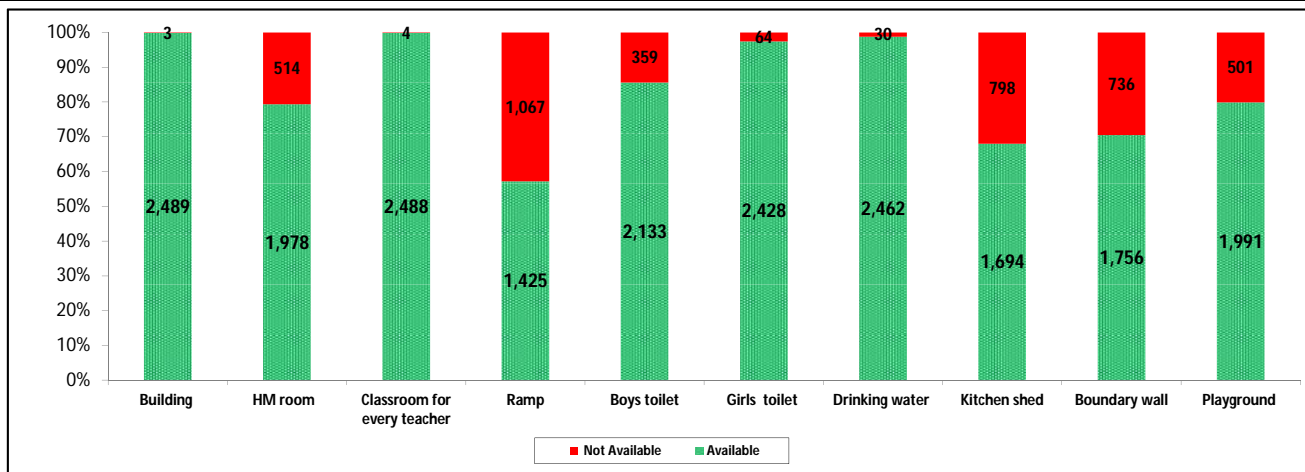
3 - Number of Mediumwise Schools by Management .

Indicator (Number of Mediumwise schools )	Govt. and Local bodies	Pvt. Aided	Pvt. Unaided	Un-recognised	Total
Marathi	1,326	808	109	0	2,243
English	4	8	97	0	109
Hindi	0	1	0	0	1
Urdu	7	85	47	0	139
Bangali	0	0	0	0	0
Gujrati	0	0	0	0	0
Kannada	0	0	0	0	0
Sindhi	0	0	0	0	0
Tamil	0	0	0	0	0
Telgu	0	0	0	0	0
<b>Total</b>	<b>1,337</b>	<b>902</b>	<b>253</b>	<b>0</b>	<b>2,492</b>

## 4 – Infrastructure

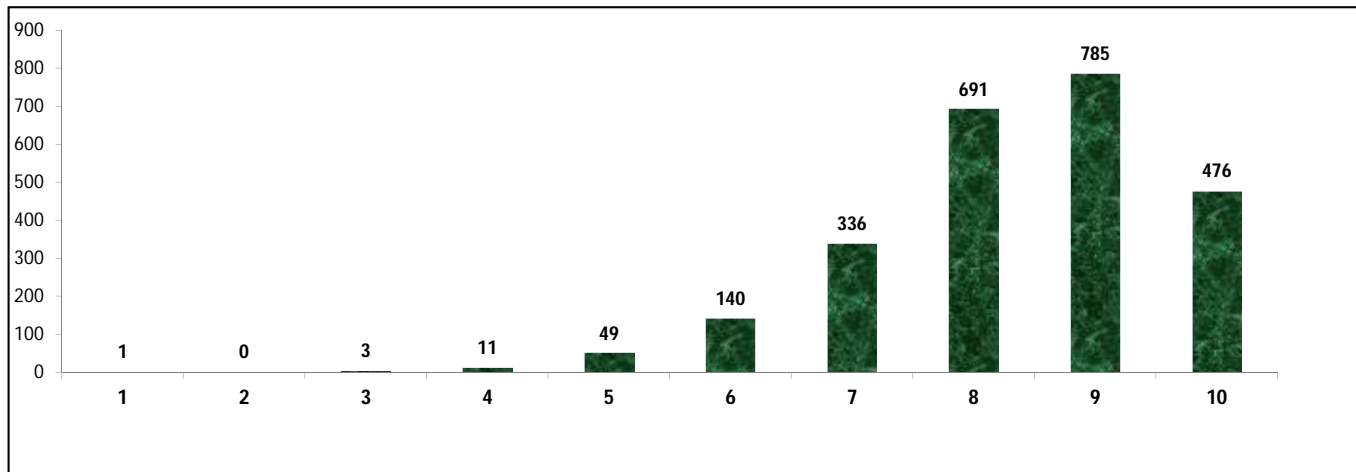
(Norms as specified in the schedule under section 19 of "The right of children to free and compulsory education act, 2009"( RTE Act) )

### Status of Infrastructure Facilities in Schools (Numbers, All schools)



Indicator : Schools with infrastructure facilities available		Govt. and Local bodies	Pvt. Aided	Pvt. Unaided	Un-recognised	Total
<b>Total Schools</b>		<b>1337</b>	<b>902</b>	<b>253</b>	<b>0</b>	<b>2492</b>
1. Building	Number	1,335	902	252	0	2,489
	%	99.9	100.0	99.6	0.0	99.9
2. Office-cum-store-cum-HM room	Number	902	842	234	0	1,978
	%	67.5	93.3	92.5	0.0	79.4
3. One classroom for every teacher	Number	1,335	902	251	0	2,488
	%	99.9	100.0	99.2	0.0	99.8
4. Ramp	Number	1,213	163	49	0	1,425
	%	90.7	18.1	19.4	0.0	57.2
5. Separate toilet for boys	Number	1,213	709	211	0	2,133
	%	90.7	78.6	83.4	0.0	85.6
6. Separate toilet for girls	Number	1,322	866	240	0	2,428
	%	98.9	96.0	94.9	0.0	97.4
7. Drinking water facility	Number	1,313	897	252	0	2,462
	%	98.2	99.4	99.6	0.0	98.8
8. Kitchen shed	Number	1,151	513	30	0	1,694
	%	86.1	56.9	11.9	0.0	68.0
9. Boundary wall	Number	894	650	212	0	1,756
	%	66.9	72.1	83.8	0.0	70.5
10. Playground	Number	937	837	217	0	1,991
	%	70.1	92.8	85.8	0.0	79.9
<b>Indicators</b>		<b>Govt. and Local bodies</b>	<b>Pvt. Aided</b>	<b>Pvt. Unaided</b>	<b>Un-recognised</b>	<b>Total</b>
Number of classrooms(1 to 8)		6,566	6,117	1,453	0	14,136
Number of classrooms(9 to 10)		149	1,383	133	0	1,665
Number of classrooms(11 to 12)		10	908	0	0	918
<b>Student Classroom Ratio (SCR) Primary</b>		<b>24</b>	<b>UpperPri.</b>	<b>31</b>	<b>Elementry</b>	<b>29</b>
Primary schools having SCR more than 30	Number	58	78	13	0	149
	%	4.3	8.6	5.1	0.0	6.0
Upper Primary. schools having SCR more than 35	Number	20	251	13	0	284
	%	1.5	27.8	5.1	0.0	11.4
<b>Schools fulfilling "10" infrastructure norms for building under RTE</b>	Number	<b>423</b>	<b>48</b>	<b>5</b>	<b>0</b>	<b>476</b>
	%	31.6	5.3	2.0	0.0	19.1

**Number of schools by number of infrastructure elements complinace for building under RTE**



**5- Enrolment**

Number of students enrolled in		Govt. and Local bodies	Pvt. Aided	Pvt. Unaided	Un-recognised	Total
Primary Classes (1-5)	Boys	60,059	64,329	16,376	0	140,764
	Girls	61,419	51,547	11,041	0	124,007
	Total	121,478	115,876	27,417	0	264,771
Upper Primary Classes (6-8)	Boys	15,091	61,657	5,145	0	81,893
	Girls	17,662	46,594	3,453	0	67,709
	Total	32,753	108,251	8,598	0	149,602
Secondary Classes (9-10)	Boys	2,533	43,009	2,730	0	48,272
	Girls	1,966	31,841	2,111	0	35,918
	Total	4,499	74,850	4,841	0	84,190
Higher Secondary Classes (11-12)	Boys	152	29,707	2,889	0	32,748
	Girls	59	23,368	1,684	0	25,111
	Total	211	53,075	4,573	0	57,859
Elementary Classes (1-8)	Boys	75,150	125,986	21,521	0	222,657
	Girls	79,081	98,141	14,494	0	191,716
	Total	154,231	224,127	36,015	0	414,373
All Classes (1-12)	Boys	77,835	198,702	27,140	0	303,677
	Girls	81,106	153,350	18,289	0	252,745
	Total	158,941	352,052	45,429	0	556,422

**5.1- Castewise Enrolment**

Indicator	Primary (1-5)	Upper Primary (6-8)	Secondary (9-10)	Higher Sec. (11-12)	Elementry (1-8)	All (Class 1-12)
<b>All Social Groups</b>	<b>264,771</b>	<b>149,602</b>	<b>84,190</b>	<b>57,859</b>	<b>414,373</b>	<b>556,422</b>
General	120,699	69,628	40,766	30,593	190,327	261,686
Schedule Castes (SC)	57,315	30,876	16,225	9,722	88,191	114,138
Schedule Tribes (ST)	9,179	5,171	2,656	1,653	14,350	18,659
Other Backward Classes (OBC)	77,578	43,927	24,543	15,891	121,505	161,939
Muslim	50,790	24,317	11,129	5,326	75,107	91,562
Nomadic Tribes (NT)	27,304	14,865	8,039	3,898	42,169	54,106
Vimukat Jatis (VJ)	17,295	9,182	4,540	3,334	26,477	34,351
Special Backward Classes (SBC)	1,699	1,212	811	722	2,911	4,444
Bouddhist Minority	954	439	331	96	1,393	1,820
Parshi Minority	14	1	5	2	15	22
Christan Minority	58	21	18	4	79	101
Sikh Minority	13	6	5	1	19	25
Jain Minority	265	137	100	33	402	535
B. P. L.	19,040	6,594	2,034	558	25,634	28,226
Children with Special Needs (C.W.S.N.)	3,676	1,180	439	37	4,856	5,332

## 5.2- Mediumwise Enrolment

Indicator (Number of Mediumwise schools )	Govt. and Local bodies	Pvt. Aided	Pvt. Unaided	Un-recognised	Total
Marathi	157,670	314,820	21,138	0	493,628
English	809	6,041	18,154	0	25,004
Hindi	0	1,875	0	0	1,875
Urdu	462	29,316	6,137	0	35,915
Bangali	0	0	0	0	0
Gujrati	0	0	0	0	0
Kannada	0	0	0	0	0
Sindhi	0	0	0	0	0
Tamil	0	0	0	0	0
Telgu	0	0	0	0	0
<b>Total</b>	<b>158,941</b>	<b>352,052</b>	<b>45,429</b>	<b>0</b>	<b>556,422</b>
School size (Distribution of schools by Enrolment)	Govt. and Local bodies	Pvt. Aided	Pvt. Unaided	Un-recognised	Total
Less than 10	29	0	3	0	32
11-20	137	5	5	0	147
21-30	157	27	12	0	196
31-60	260	39	34	0	333
61-150	299	167	100	0	566
More than 150	455	664	99	0	1,218

## 6- Gender Gap in Enrolment (in %)

Indicator	Primary (1-5)	Upper Primary (6-8)	Secondary (9-10)	Higher Secondary (11-12)	Elementry (1-8)	All (Class 1-12)
All Social Groups	6.33	9.48	14.67	13.20	7.47	9.15
General	6.37	8.86	12.22	10.08	7.28	8.38
Schedule Castes (SC)	3.85	5.91	13.28	15.08	4.57	6.70
Schedule Tribes (ST)	7.01	13.94	19.28	15.06	9.51	11.39
Other Backward Classes (OBC)	8.02	12.45	19.17	18.56	11.44	13.10
Muslim	-0.93	-2.54	3.64	1.61	-1.45	-0.66
Nomadic Tribes (NT)	9.36	12.36	21.08	19.29	10.42	12.64
Vimukat Jatis (VJ)	8.54	15.92	23.70	25.25	11.10	14.14
Special Backward Classes (SBC)	12.77	9.57	14.18	14.18	11.44	13.10
Bouddhist Minority	10.90	11.62	37.76	18.75	11.13	16.37
Parshi Minority	-14.29	-100.00	20.00	0.00	-20.00	-9.09
Christan Minority	17.24	-23.81	33.33	0.00	6.33	10.89
Sikh Minority	-7.69	0.00	20.00	100.00	-5.26	4.00
Jain Minority	6.42	10.95	-4.00	-3.03	7.96	5.05
B. P. L.	4.76	1.18	0.49	-0.36	3.84	3.51
Children with Special Needs (C.W.S.N.)	16.32	13.73	23.92	24.32	6.33	16.43
No. of clusters having gender gap > 10 %	25	33	51	36	27	33
No. of Block having gender gap > 10 %	1	4	6	6	2	3

## 7- Teacher

(Norms as specified in the schedule under section 19 and 23 of the RTE Act)

Indicators	Govt. and Local bodies	Pvt. Aided	Pvt. Unaided	Un-recognised	Total
Number of Teachers	Male	4,880	8,004	885	13,769
	Female	1,916	2,368	742	5,026
	<b>Total</b>	<b>6,796</b>	<b>10,372</b>	<b>1,627</b>	<b>18,795</b>
Percentage of female teachers to total teachers	28.2	22.8	45.6	0.0	26.7
Schools without a female teacher	<b>Number</b>	<b>523</b>	<b>221</b>	<b>41</b>	<b>785</b>
	%	39.1	24.5	16.2	31.5

## 7.1- Mediumwise Teacher

Medium	Govt. and Local bodies	Pvt. Aided	Pvt. Unaided	Un-recognised	Total
Marathi	6,738	9,308	733	0	16,779
English	33	110	653	0	796
Hindi	0	39	0	0	39
Urdu	25	915	241	0	1,181
Bangali	0	0	0	0	0
Gujrati	0	0	0	0	0
Kannada	0	0	0	0	0
Sindhi	0	0	0	0	0
Tamil	0	0	0	0	0
Telgu	0	0	0	0	0
<b>Total</b>	<b>6,796</b>	<b>10,372</b>	<b>1,627</b>	<b>0</b>	<b>18,795</b>

## 7.2- Castewise Teacher

Caste	Govt. and Local bodies	Pvt. Aided	Pvt. Unaided	Un-recognised	Total
All	6,796	10,372	1,627	0	18,795
Genral	2,788	5,066	849	0	8,703
SC	925	1,226	168	0	2,319
ST	432	372	44	0	848
OBC	1,370	1,715	195	0	3,280
VJ	653	1,272	261	0	2,186
NT	320	494	72	0	886
SBC	144	134	28	0	306
NT-B	34	17	1	0	52
NT-C	60	3	3	0	66
NT-D	65	2	2	0	69

Indicators		Govt. and Local bodies	Pvt. Aided	Pvt. Unaided	Un-recognised	Total
Schools with single teacher	Number	8	2	4	0	14
	%	0.6	0.2	1.6	0.0	0.6
PTR	Local Body-Only	Primary Section	Upper Primary Section	Secondary Section	Elementry Section	All (Class 1-12)
Pupil Teacher Ratio	23	35	23	25	30	30

Indicators		Govt. and Local bodies	Pvt. Aided	Pvt. Unaided	Un-recognised	Total
Primary schools having PTR more than 30	Number	82	75	21	0	178
	%	6.2	19.3	12.1	0.0	9.4
Upper Primary having PTR more than 35	Number	25	139	6	0	170
	%	3.7	18.7	3.8	0.0	10.8
Trained /Untrained Teacher	Primary Section	Upper Primary Section	Secondary Section	Higher Secondary Section	Elementry Section	All (Class 1-12)
Teacher All	7,577	6,418	3,337	1,463	13,995	18,795
Trained Teacher Number	7,523	6,367	3,304	1,405	13,890	18,599
%	99.3	99.2	99.0	96.0	99.2	99.0
Untrained Teacher All Number	54	51	33	58	105	196
%	0.7	0.8	1.0	4.0	0.8	1.0

## 8-Efficiency indicators

### 8.1 Annual Average Drop-out Rate

Social Groups	Primary			UpperPrimary		
	Boys	Girls	Total	Boys	Girls	Total
<b>All Social Groups</b>	4.08	5.97	4.97	3.81	7.04	5.30
<b>General</b>	3.91	6.10	4.95	2.89	5.85	4.27
Schedule Castes (SC)	5.22	6.81	5.99	5.88	7.44	6.62
Schedule Tribes (ST)	10.32	9.68	10.02	-1.45	14.75	6.22
Other Backward Classes (OBC)	1.66	3.80	2.65	0.23	4.28	2.05
Vimukat Jatis (VJ)	4.04	4.83	4.40	4.56	2.72	3.79
Nomadic Tribes (NT)	6.86	8.57	7.65	14.69	14.81	14.74
Special Backward Classes (SBC)	21.06	13.80	17.96	7.91	-1.29	3.96
Muslim	10.28	6.33	8.31	11.01	9.12	10.05

### 8.2 Transition Rate

Social Groups	Primary			UpperPrimary		
	Boys	Girls	Total	Boys	Girls	Total
<b>All Social Groups</b>	99.4	95.3	97.4	93.2	87.9	90.8
General	98.5	95.5	97.1	94.0	88.5	91.5
Schedule Castes (SC)	97.3	93.4	95.4	88.5	87.0	87.8
Schedule Tribes (ST)	95.3	83.2	89.7	96.6	78.4	87.7
Other Backward Classes (OBC)	102.6	98.1	100.5	94.8	94.8	92.1
VJ / NT	101.5	105.0	103.1	116.4	122.5	119.0
Special Backward Classes (SBC)	87.9	87.5	87.7	100.4	110.4	105.0
Muslim	91.4	88.5	89.9	77.8	75.9	76.8

### 8.3 Gender Parity Index (GPI)

Social Groups	Primary Section	Upper Primary Section	Secondary Section	Higher Secondary Section	Elementary Section	All (Class 1-12)
<b>All Social Groups</b>	0.88	0.83	0.74	0.77	0.86	0.83
General	0.88	0.84	0.84	0.82	0.86	0.85
Schedule Castes (SC)	0.93	0.89	0.77	0.77	0.91	0.87
Schedule Tribes (ST)	0.87	0.76	0.68	0.74	0.83	0.80
Other Backward Classes (OBC)	0.85	0.78	0.68	0.70	0.82	0.79
Vimukat Jatis (VJ)	0.84	0.73	0.62	0.60	0.80	0.75
Nomadic Tribes (NT)	0.83	0.78	0.65	0.68	0.81	0.78
Special Backward Classes (SBC)	0.77	0.83	0.75	0.69	0.79	0.77
Muslim	1.02	1.05	0.93	0.97	1.03	1.01

### 8.4 Retention Rate

Social Groups	Primary			UpperPrimary		
	Boys	Girls	Total	Boys	Girls	Total
<b>All Social Groups</b>	88.83	86.02	87.51	90.80	90.80	87.97
General	91.42	88.43	90.03	92.76	92.76	86.25
Schedule Castes (SC)	81.43	83.94	82.63	84.94	81.98	83.54
Schedule Tribes (ST)	92.13	81.14	87.07	80.96	65.46	73.35
Other Backward Classes (OBC)	92.13	81.14	87.07	93.21	87.43	90.62
Muslim	80.77	81.90	87.51	74.35	73.64	87.97