



शिक्षणाचा अधिकार

सर्व शिक्षा अभियान
सारे शिक्षका, पुढे जाऊया

State Profile

Based on Unified District Information System for Education (UDISE), 2012-13

State : Maharashtra

1 – Demographic (Source : Census of India,2011)

	Male	Female	Person	Sex Ratio	Child Sex Ratio (0-6 years)
Population	58,361,397	54,011,575	112,372,972		
Literacy rate	89.8	75.5	82.9	925	883

2- Number of Schools by Management and Category

Indicator (Number of schools)	Govt. and Local bodies	Pvt. Aided	Pvt. Unaided	Un-recognised	Total
Primary (1-4)	42,921	2,907	3,915	395	50,138
Primary with Upper Primary (1-7)	22,948	3,468	3,480	119	30,015
Pri,Upper,Secondary with Hsecondary (1 to 12)	226	239	287	3	755
Only Upper Primary	27	8	8	3	46
Upper,Secondary with Hsecondary (5 to 12)	226	4,356	382	3	4,967
Primary,Upperprimary with Secondary(1 to 10)	517	286	924	28	1,755
Upperprimary with Secondary(5 to 10)	545	5,826	1,158	23	7,552
Secondary Only (8 to 10)	281	2,913	2,686	77	5,957
Secondary with HSecondary(8 to 12)	17	583	340	3	943
Higher Secondary with college attached (11 to 12)	10	673	809	5	1,497
Total	67,718	21,259	13,989	659	103,625
Having Primary level classes	66,612	6,900	8,606	545	82,663
Having Upper Primary level classes	24,787	17,679	9,265	259	51,990
Having Secondary level classes	1,812	14,203	5,777	137	21,929
Having HigherSecondary level classes	479	5,851	1,818	14	8,162
Ratio of Primary to Upper Primary schools				State average	1.6
				State	1.6

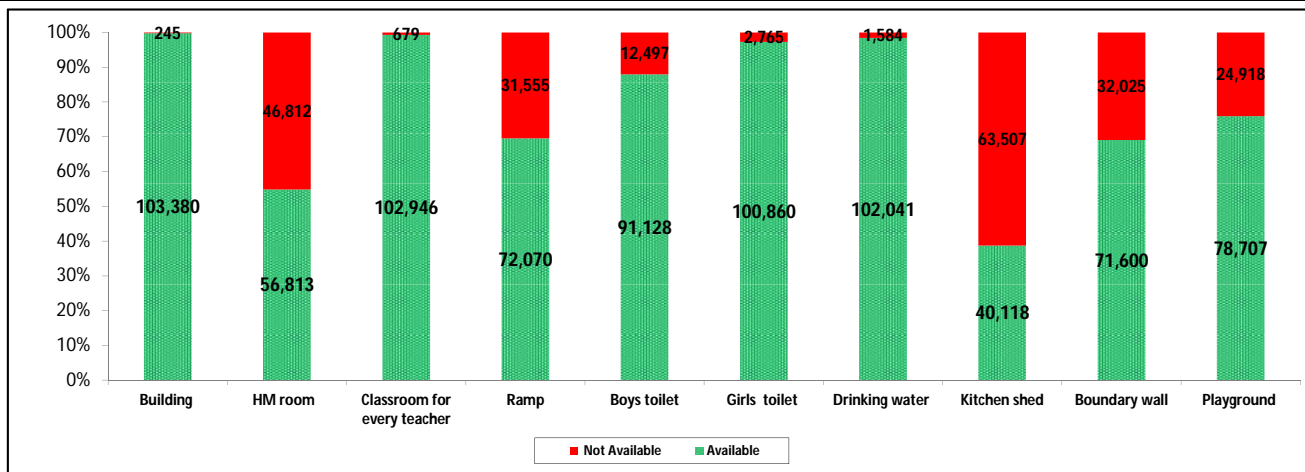
3 - Number of Mediumwise Schools by Management .

Indicator (Number of Mediumwise schools)	Govt. and Local bodies	Pvt. Aided	Pvt. Unaided	Un-recognised	Total
Marathi	63,625	18,444	4,843	208	87,120
English	321	541	7,833	435	9,130
Hindi	676	638	375	4	1,693
Urdu	2,533	1,362	878	12	4,785
Bangali	54	3	1	0	58
Gujrati	128	165	34	0	327
Kannada	260	75	12	0	347
Sindhi	7	18	5	0	30
Tamil	44	4	2	0	50
Telgu	70	9	6	0	85
Total	67,718	21,259	13,989	659	103,625

4 – Infrastructure

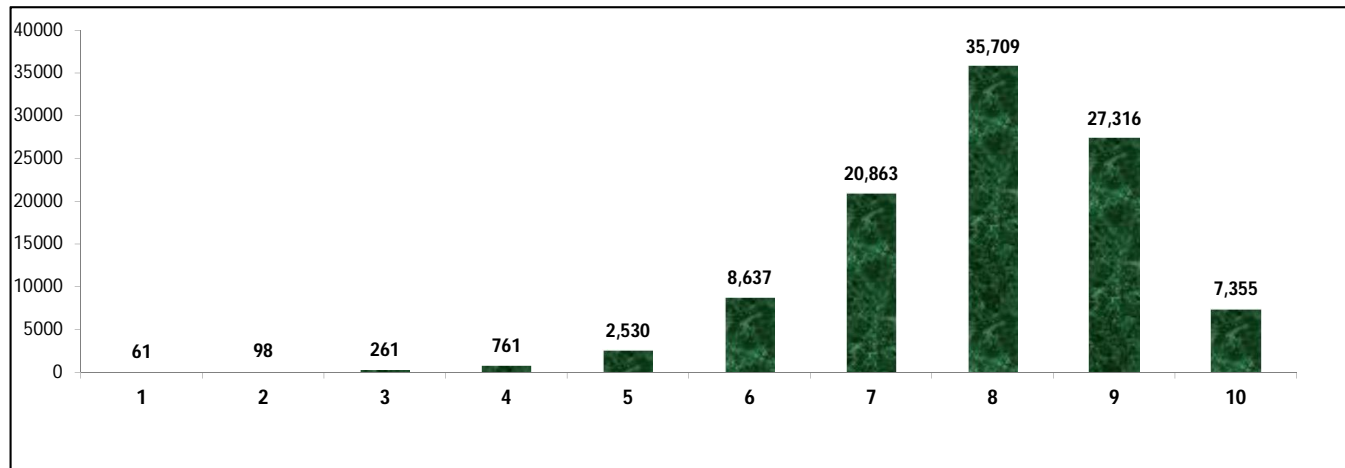
(Norms as specified in the schedule under section 19 of "The right of children to free and compulsory education act, 2009" (RTE Act))

Status of Infrastructure Facilities in Schools (Numbers, All schools)



Indicator : Schools with infrastructure facilities available		Govt. and Local bodies	Pvt. Aided	Pvt. Unaided	Un-recognised	Total
Total Schools		67718	21259	13989	659	103625
1. Building	Number	67,489	21,249	13,983	659	103,380
	%	99.7	100.0	100.0	100.0	99.8
2. Office-cum-store-cum-HM room	Number	26,029	17,953	12,300	531	56,813
	%	38.4	84.4	87.9	80.6	54.8
3. One classroom for every teacher	Number	67,098	21,237	13,954	657	102,946
	%	99.1	99.9	99.7	99.7	99.3
4. Ramp	Number	62,077	6,200	3,636	157	72,070
	%	91.7	29.2	26.0	23.8	69.5
5. Separate toilet for boys	Number	59,171	18,426	12,919	612	91,128
	%	87.4	86.7	92.4	92.9	87.9
6. Separate toilet for girls	Number	65,748	20,767	13,702	643	100,860
	%	97.1	97.7	97.9	97.6	97.3
7. Drinking water facility	Number	66,217	21,220	13,947	657	102,041
	%	97.8	99.8	99.7	99.7	98.5
8. Kitchen shed	Number	32,646	7,132	327	13	40,118
	%	48.2	33.5	2.3	2.0	38.7
9. Boundary wall	Number	43,528	16,087	11,472	513	71,600
	%	64.3	75.7	82.0	77.8	69.1
10. Playground	Number	46,939	19,087	12,154	527	78,707
	%	69.3	89.8	86.9	80.0	76.0
Indicators		Govt. and Local bodies	Pvt. Aided	Pvt. Unaided	Un-recognised	Total
Number of classrooms(1 to 8)		262,270	138,562	91,734	3,144	495,710
Number of classrooms(9 to 10)		4,382	44,183	14,122	211	62,898
Number of classrooms(11 to 12)		1,187	24,016	28	28	25,259
Student Classroom Ratio (SCR) Primary		25	UpperPri.	36	Elementry	33
Primary schools having SCR more than 30	Number	5,627	1,946	1,519	43	9,135
	%	8.3	9.2	10.9	6.5	8.8
Upper Primary. schools having SCR more than 35	Number	855	9,885	2,218	15	12,973
	%	1.3	46.5	15.9	2.3	12.5
Schools fulfilling "10" infrastructure norms for building under RTE	Number	5,916	1,367	70	2	7,355
	%	8.7	6.4	0.5	0.3	7.1

Number of schools by number of infrastructure elements complinace for building under RTE



5- Enrolment

Number of students enrolled in		Govt. and Local bodies	Pvt. Aided	Pvt. Unaided	Un-recognised	Total
Primary Classes (1-5)	Boys	2,630,632	1,445,283	1,342,262	27,342	5,445,519
	Girls	2,572,773	1,275,004	972,314	18,749	4,838,840
	Total	5,203,405	2,720,287	2,314,576	46,091	10,284,359
Upper Primary Classes (6-8)	Boys	699,088	1,933,974	544,287	4,375	3,181,724
	Girls	701,526	1,674,853	381,066	3,015	2,760,460
	Total	1,400,614	3,608,827	925,353	7,390	5,942,184
Secondary Classes (9-10)	Boys	119,683	1,404,887	328,155	2,320	1,855,045
	Girls	106,738	1,219,321	237,948	1,746	1,565,753
	Total	226,421	2,624,208	566,103	4,066	3,420,798
Higher Secondary Classes (11-12)	Boys	35,666	963,024	177,410	553	1,176,653
	Girls	31,185	872,427	123,755	482	1,027,849
	Total	66,851	1,835,451	301,165	1,035	2,204,502
Elementary Classes (1-8)	Boys	3,329,720	3,379,257	1,886,549	31,717	8,627,243
	Girls	3,274,299	2,949,857	1,353,380	21,764	7,599,300
	Total	6,604,019	6,329,114	3,239,929	53,481	16,226,543
All Classes (1-12)	Boys	3,485,069	5,747,168	2,392,114	34,590	11,658,941
	Girls	3,412,222	5,041,605	1,715,083	23,992	10,192,902
	Total	6,897,291	10,788,773	4,107,197	58,582	21,851,843

5.1- Castewise Enrolment

Indicator	Primary (1-5)	Upper Primary (6-8)	Secondary (9-10)	Higher Sec. (11-12)	Elementry (1-8)	All (Class 1-12)
All Social Groups	10,284,359	5,942,184	3,420,798	2,204,502	16,226,543	21,851,843
General	4,149,127	2,415,170	1,425,521	994,448	6,564,297	8,984,266
Schedule Castes (SC)	1,396,937	847,323	482,337	280,170	2,244,260	3,006,767
Schedule Tribes (ST)	1,293,321	605,509	281,149	145,062	1,898,830	2,325,041
Other Backward Classes (OBC)	3,444,974	2,074,182	1,231,791	784,822	5,519,156	7,535,769
Muslim	1,406,350	722,085	355,120	153,355	2,128,435	2,636,910
Nomadic Tribes (NT)	810,250	471,753	259,022	144,792	1,282,003	1,685,817
Vimukat Jatis (VJ)	402,809	199,289	93,690	52,914	602,098	748,702
Special Backward Classes (SBC)	125,888	89,426	57,551	41,683	215,314	314,548
Bouddhist Minority	325,932	189,557	103,747	49,444	515,489	668,680
Parshi Minority	3,667	3,015	2,030	1,783	6,682	10,495
Christan Minority	46,638	31,816	19,420	12,596	78,454	110,470
Sikh Minority	10,436	7,752	4,598	2,603	18,188	25,389
Jain Minority	51,065	32,333	21,757	12,485	83,398	117,640
B. P. L.	1,147,514	473,572	200,479	77,584	1,621,086	1,899,149
Children with Special Needs (C.W.S.N.)	160,863	70,776	26,449	7,986	231,639	266,074

5.2- Mediumwise Enrolment

Indicator (Number of Mediumwise schools)	Govt. and Local bodies	Pvt. Aided	Pvt. Unaided	Un-recognised	Total
Marathi	6,011,455	9,025,169	867,250	22,431	15,926,305
English	155,064	591,177	2,992,317	34,880	3,773,438
Hindi	217,227	377,028	89,955	250	684,460
Urdu	459,388	684,979	150,387	1,021	1,295,775
Bangali	6,179	679	60	0	6,918
Gujrati	11,710	81,906	3,507	0	97,123
Kannada	22,282	20,711	882	0	43,875
Sindhi	203	5,806	881	0	6,890
Tamil	7,560	463	127	0	8,150
Telgu	6,223	855	1,831	0	8,909
Total	6,897,291	10,788,773	4,107,197	58,582	21,851,843
School size (Distribution of schools by Enrolment)	Govt. and Local bodies	Pvt. Aided	Pvt. Unaided	Un-recognised	Total
Less than 10	3,593	30	134	22	3,779
11-20	9,711	74	284	57	10,126
21-30	9,408	209	430	66	10,113
31-60	13,976	560	1,625	172	16,333
61-150	15,867	3,333	4,245	244	23,689
More than 150	15,166	17,050	7,271	98	39,585

6- Gender Gap in Enrolment (in %)

Indicator	Primary (1-5)	Upper Primary (6-8)	Secondary (9-10)	Higher Secondary (11-12)	Elementry (1-8)	All (Class 1-12)
All Social Groups	5.90	7.09	8.46	6.75	6.33	6.71
General	7.02	7.79	8.17	5.99	7.31	7.30
Schedule Castes (SC)	3.76	5.20	7.76	6.46	4.30	5.06
Schedule Tribes (ST)	4.21	7.26	10.54	13.23	5.18	6.33
Other Backward Classes (OBC)	6.05	6.99	8.58	14.51	4.91	6.17
Muslim	2.21	2.04	1.96	-3.78	2.15	1.78
Nomadic Tribes (NT)	6.22	7.77	11.20	13.14	6.79	8.01
Vimukat Jatis (VJ)	5.59	9.93	16.76	20.91	7.03	9.23
Special Backward Classes (SBC)	4.75	5.14	4.84	4.84	4.91	6.17
Bouddhist Minority	3.86	6.58	9.16	6.86	4.86	5.67
Parshi Minority	-0.03	-0.76	-0.10	10.04	-0.36	1.46
Christan Minority	3.10	2.97	1.09	-5.26	3.05	1.76
Sikh Minority	6.34	3.46	4.09	6.19	5.11	5.04
Jain Minority	7.35	5.85	6.00	0.94	6.77	6.01
B. P. L.	2.84	2.38	1.78	2.59	2.70	2.60
Children with Special Needs (C.W.S.N.)	18.19	13.53	12.55	8.21	3.05	16.09
No. of clusters having gender gap > 10 %	797	1,386	2,149	1,389	852	1,036
No. of Block having gender gap > 10 %	20	62	148	157	32	52

7- Teacher

(Norms as specified in the schedule under section 19 and 23 of the RTE Act)

Indicators	Govt. and Local bodies	Pvt. Aided	Pvt. Unaided	Un-recognised	Total	
Number of Teachers	Male	172,093	183,808	36,705	393,496	
	Female	111,977	98,324	84,781	297,482	
	Total	284,070	282,132	121,486	3,290	690,978
Percentage of female teachers to total teachers	39.4	34.9	69.8	72.9	43.1	
Schools without a female teacher	Number	26,124	3,717	1,504	32	31,377
	%	38.6	17.5	10.8	4.9	30.3

7.1- Mediumwise Teacher

Medium	Govt. and Local bodies	Pvt. Aided	Pvt. Unaided	Un-recognised	Total
Marathi	256,170	240,142	29,326	1,120	526,758
English	4,622	12,691	84,925	2,092	104,330
Hindi	6,201	9,482	2,259	20	17,962
Urdu	14,497	16,348	4,669	58	35,572
Bangali	290	21	3	0	314
Gujrati	572	2,482	162	0	3,216
Kannada	1,070	766	59	0	1,895
Sindhi	18	141	31	0	190
Tamil	341	18	10	0	369
Telgu	289	41	42	0	372
Total	284,070	282,132	121,486	3,290	690,978

7.2- Castewise Teacher

Caste	Govt. and Local bodies	Pvt. Aided	Pvt. Unaided	Un-recognised	Total
All	284,070	282,132	121,486	3,290	690,978
Genral	98,165	123,846	75,508	1,593	299,112
SC	37,302	34,686	10,046	374	82,408
ST	27,329	16,521	3,246	156	47,252
OBC	73,483	69,357	21,062	792	164,694
VJ	21,482	17,337	5,428	132	44,379
NT	10,918	8,647	1,653	62	21,280
SBC	6,637	3,511	1,082	33	11,263
NT-B	1,507	1,175	214	17	2,913
NT-C	2,185	354	354	10	2,903
NT-D	1,924	256	256	10	2,446

Indicators		Govt. and Local bodies	Pvt. Aided	Pvt. Unaided	Un-recognised	Total
Schools with single teacher	Number	1,501	39	124	24	1,688
	%	2.2	0.2	0.9	3.6	1.6
PTR	Local Body-Only	Primary Section	Upper Primary Section	Secondary Section	Elementry Section	All (Class 1-12)
Pupil Teacher Ratio	24	35	26	29	31	32

Indicators		Govt. and Local bodies	Pvt. Aided	Pvt. Unaided	Un-recognised	Total
Primary schools having PTR more than 30	Number	6,632	2,000	1,717	57	10,406
	%	10.0	29.0	20.0	10.5	12.6
Upper Primary having PTR more than 35	Number	1,484	4,512	1,166	6	7,168
	%	6.0	25.5	12.6	2.3	13.8
Trained /Untrained Teacher	Primary Section	Upper Primary Section	Secondary Section	Higher Secondary Section	Elementry Section	All (Class 1-12)
Teacher All	293,753	231,554	119,331	46,340	525,307	690,978
Trained Teacher Number	289,524	228,394	117,796	45,231	517,918	680,945
%	98.6	98.6	98.7	97.6	98.6	98.5
Untrained Teacher All Number	4,229	3,160	1,535	1,109	7,389	10,033
%	1.4	1.4	1.3	2.4	1.4	1.5

8-Efficiency indicators

8.1 Annual Average Drop-out Rate

Social Groups	Primary			UpperPrimary		
	Boys	Girls	Total	Boys	Girls	Total
All Social Groups	0.76	1.32	1.02	2.50	2.80	2.90
General	-0.13	0.55	0.18	2.89	3.86	3.34
Schedule Castes (SC)	1.81	2.25	2.03	3.03	4.24	3.61
Schedule Tribes (ST)	6.33	6.47	6.40	7.51	8.60	8.02
Other Backward Classes (OBC)	-2.01	-1.58	-1.81	-2.87	-1.85	-2.39
Vimukat Jatis (VJ)	6.91	6.27	6.61	11.14	13.88	12.39
Nomadic Tribes (NT)	2.86	3.27	3.05	1.75	3.16	2.40
Special Backward Classes (SBC)	8.73	6.05	7.47	9.35	9.30	9.33
Muslim	1.57	1.33	1.45	4.09	4.98	4.53

8.2 Transition Rate

Social Groups	Primary			UpperPrimary		
	Boys	Girls	Total	Boys	Girls	Total
All Social Groups	99.1	98.1	98.6	96.4	94.5	95.5
General	99.7	98.9	99.3	95.5	93.9	94.8
Schedule Castes (SC)	98.5	97.5	98.0	94.7	92.4	93.6
Schedule Tribes (ST)	90.8	88.8	89.8	88.3	85.3	86.9
Other Backward Classes (OBC)	101.9	101.1	101.5	100.8	100.8	99.9
VJ / NT	104.0	105.4	104.7	108.6	113.3	110.7
Special Backward Classes (SBC)	102.1	102.7	102.4	93.8	93.7	93.8
Muslim	97.1	97.0	97.1	89.5	88.7	89.1

8.3 Gender Parity Index (GPI)

Social Groups	Primary Section	Upper Primary Section	Secondary Section	Higher Secondary Section	Elementary Section	All (Class 1-12)
All Social Groups	0.89	0.87	0.84	0.87	0.88	0.87
General	0.87	0.86	0.86	0.89	0.86	0.86
Schedule Castes (SC)	0.93	0.90	0.86	0.86	0.92	0.90
Schedule Tribes (ST)	0.92	0.86	0.81	0.77	0.90	0.88
Other Backward Classes (OBC)	0.89	0.87	0.84	0.88	0.88	0.87
Vimukat Jatis (VJ)	0.89	0.82	0.71	0.65	0.87	0.83
Nomadic Tribes (NT)	0.88	0.86	0.80	0.77	0.87	0.85
Special Backward Classes (SBC)	0.91	0.90	0.91	0.75	0.91	0.88
Muslim	0.96	0.96	0.96	1.08	0.96	0.97

8.4 Retention Rate

Social Groups	Primary			UpperPrimary		
	Boys	Girls	Total	Boys	Girls	Total
All Social Groups	94.10	92.05	93.00	96.80	96.80	95.60
General	94.20	92.40	93.40	96.20	96.20	94.00
Schedule Castes (SC)	92.30	91.40	91.80	94.60	92.00	93.40
Schedule Tribes (ST)	76.20	74.30	75.30	86.70	83.00	85.00
Other Backward Classes (OBC)	76.20	74.30	75.30	101.60	99.30	100.50
Muslim	97.60	98.80	93.00	92.90	90.90	95.60