



शिक्षणाचा अधिकार

सर्व शिक्षा अभियान  
सारे शिक्षा, पुढे जाऊया

# District Profile

Based on Unified District Information System for Education (UDISE), 2012-13

District : Mumbai (Suburban)

1 – Demographic (Source : Census of India,2011)

	Male	Female	Person	Sex Ratio	Child Sex Ratio (0-6 years)
Population	5,025,165	4,307,316	9,332,481		
Literacy rate	94.3	86.9	90.9	857	910

2- Number of Schools by Management and Category

Indicator (Number of schools )	Govt. and Local bodies	Pvt. Aided	Pvt. Unaided	Un-recognised	Total
Primary (1-4)	207	439	685	0	1,331
Primary with Upper Primary (1-7)	940	1	4	0	945
Pri,Upper,Secondary with Hsecondary (1 to 12)	0	0	0	0	0
Only Upper Primary	0	0	0	0	0
Upper,Secondary with Hsecondary (5 to 12)	0	0	0	0	0
Primary,Upperprimary with Secondary(1 to 10)	0	0	0	0	0
Upperprimary with Secondary(5 to 10)	42	0	0	0	42
Secondary Only (8 to 10)	104	0	0	0	104
Secondary with HSecondary(8 to 12)	0	0	0	0	0
Higher Secondary with college attached (11 to 12)	0	0	0	0	0
<b>Total</b>	<b>1,293</b>	<b>440</b>	<b>689</b>	<b>0</b>	<b>2,422</b>
Having Primary level classes	1,147	440	689	0	2,276
Having Upper Primary level classes	1,086	1	4	0	1,091
Having Secondary level classes	146	0	0	0	146
Having HigherSecondary level classes	0	0	0	0	0
Ratio of Primary to Upper Primary schools	State average				1.6
	District				2.1

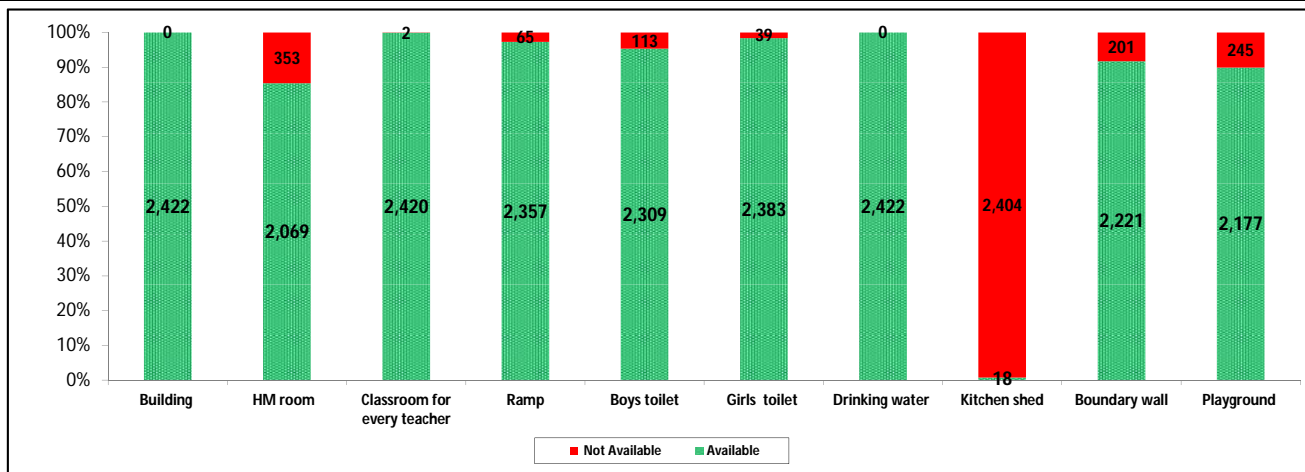
3 - Number of Mediumwise Schools by Management .

Indicator (Number of Mediumwise schools )	Govt. and Local bodies	Pvt. Aided	Pvt. Unaided	Un-recognised	Total
Marathi	467	209	65	0	741
English	116	84	564	0	764
Hindi	268	59	33	0	360
Urdu	246	37	20	0	303
Bangali	0	0	0	0	0
Gujrati	82	48	6	0	136
Kannada	39	2	0	0	41
Sindhi	0	0	0	0	0
Tamil	40	1	0	0	41
Telgu	35	0	1	0	36
<b>Total</b>	<b>1,293</b>	<b>440</b>	<b>689</b>	<b>0</b>	<b>2,422</b>

## 4 – Infrastructure

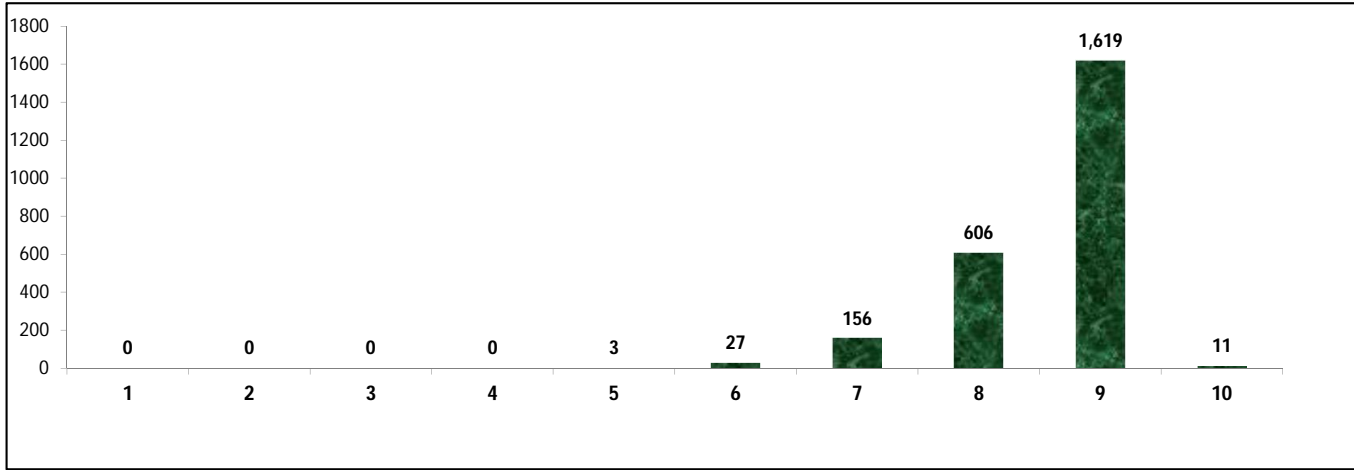
(Norms as specified in the schedule under section 19 of "The right of children to free and compulsory education act, 2009" ( RTE Act ) )

### Status of Infrastructure Facilities in Schools (Numbers, All schools)



Indicator : Schools with infrastructure facilities available		Govt. and Local bodies	Pvt. Aided	Pvt. Unaided	Un-recognised	Total
<b>Total Schools</b>		<b>1293</b>	<b>440</b>	<b>689</b>	<b>0</b>	<b>2422</b>
1. Building	Number	1,293	440	689	0	2,422
	%	100.0	100.0	100.0	0.0	100.0
2. Office-cum-store-cum-HM room	Number	1,094	347	628	0	2,069
	%	84.6	78.9	91.1	0.0	85.4
3. One classroom for every teacher	Number	1,293	440	687	0	2,420
	%	100.0	100.0	99.7	0.0	99.9
4. Ramp	Number	1,281	428	648	0	2,357
	%	99.1	97.3	94.0	0.0	97.3
5. Separate toilet for boys	Number	1,253	415	641	0	2,309
	%	96.9	94.3	93.0	0.0	95.3
6. Separate toilet for girls	Number	1,286	428	669	0	2,383
	%	99.5	97.3	97.1	0.0	98.4
7. Drinking water facility	Number	1,293	440	689	0	2,422
	%	100.0	100.0	100.0	0.0	100.0
8. Kitchen shed	Number	10	4	4	0	18
	%	0.8	0.9	0.6	0.0	0.7
9. Boundary wall	Number	1,240	384	597	0	2,221
	%	95.9	87.3	86.6	0.0	91.7
10. Playground	Number	1,282	354	541	0	2,177
	%	99.1	80.5	78.5	0.0	89.9
<b>Indicators</b>		<b>Govt. and Local bodies</b>	<b>Pvt. Aided</b>	<b>Pvt. Unaided</b>	<b>Un-recognised</b>	<b>Total</b>
Number of classrooms(1 to 8)		8,269	3,454	6,508	0	18,231
Number of classrooms(9 to 10)		542	0	4	0	546
Number of classrooms(11 to 12)		0	0	0	0	0
<b>Student Classroom Ratio (SCR) Primary</b>		<b>48</b>	<b>UpperPri.</b>	<b>49</b>	<b>Elementry</b>	<b>48</b>
Primary schools having SCR more than 30	Number	100	349	557	0	1,006
	%	7.7	79.3	80.8	0.0	41.5
Upper Primary. schools having SCR more than 35	Number	111	631	347	0	1,089
	%	8.6	143.4	50.4	0.0	45.0
<b>Schools fulfilling "10" infrastructure norms for building under RTE</b>	Number	8	0	3	0	11
	%	0.6	0.0	0.4	0.0	0.5

**Number of schools by number of infrastructure elements compliance for building under RTE**



**5- Enrolment**

Number of students enrolled in		Govt. and Local bodies	Pvt. Aided	Pvt. Unaided	Un-recognised	Total
Primary Classes (1-5)	Boys	138,927	82,541	173,348	0	394,816
	Girls	141,160	83,918	139,133	0	364,211
	Total	280,087	166,459	312,481	0	759,027
Upper Primary Classes (6-8)	Boys	58,756	0	390	0	59,146
	Girls	59,264	0	248	0	59,512
	Total	118,020	0	638	0	118,658
Secondary Classes (9-10)	Boys	15,183	0	90	0	15,273
	Girls	14,773	0	90	0	14,863
	Total	29,956	0	180	0	30,136
Higher Secondary Classes (11-12)	Boys	0	0	0	0	0
	Girls	0	0	0	0	0
	Total	0	0	0	0	0
Elementary Classes (1-8)	Boys	197,683	82,541	173,738	0	453,962
	Girls	200,424	83,918	139,381	0	423,723
	Total	398,107	166,459	313,119	0	877,685
All Classes (1-12)	Boys	212,866	82,541	173,828	0	469,235
	Girls	215,197	83,918	139,471	0	438,586
	Total	428,063	166,459	313,299	0	907,821

**5.1- Castewise Enrolment**

Indicator	Primary (1-5)	Upper Primary (6-8)	Secondary (9-10)	Higher Sec. (11-12)	Elementry (1-8)	All (Class 1-12)
<b>All Social Groups</b>	<b>759,027</b>	<b>118,658</b>	<b>30,136</b>	<b>0</b>	<b>877,685</b>	<b>907,821</b>
<b>General</b>	610,967	80,220	20,875	0	691,187	712,062
<b>Schedule Castes (SC)</b>	70,934	20,795	4,582	0	91,729	96,311
<b>Schedule Tribes (ST)</b>	8,432	2,314	449	0	10,746	11,195
<b>Other Backward Classes (OBC)</b>	68,694	15,329	4,230	0	84,023	88,253
<b>Muslim</b>	222,354	46,503	10,110	0	268,857	278,967
<b>Nomadic Tribes (NT)</b>	9,824	1,895	534	0	11,719	12,253
<b>Vimukat Jatis (VJ)</b>	4,569	1,135	191	0	5,704	5,895
<b>Special Backward Classes (SBC)</b>	3,303	514	254	0	3,817	4,071
<b>Bouddhist Minority</b>	23,324	6,071	1,845	0	29,395	31,240
<b>Parshi Minority</b>	502	26	16	0	528	544
<b>Christan Minority</b>	12,657	787	237	0	13,444	13,681
<b>Sikh Minority</b>	1,412	57	14	0	1,469	1,483
<b>Jain Minority</b>	6,850	39	5	0	6,889	6,894
<b>B. P. L.</b>	4,796	1,386	516	0	6,182	6,698
<b>Children with Special Needs (C.W.S.N.)</b>	8,270	1,600	149	0	9,870	10,019

## 5.2- Mediumwise Enrolment

Indicator (Number of Mediumwise schools )	Govt. and Local bodies	Pvt. Aided	Pvt. Unaided	Un-recognised	Total
Marathi	110,415	70,183	12,063	0	192,661
English	49,628	52,538	286,325	0	388,491
Hindi	131,625	21,007	6,666	0	159,298
Urdu	115,272	14,761	6,921	0	136,954
Bangali	0	0	0	0	0
Gujrati	7,946	7,375	468	0	15,789
Kannada	3,248	231	0	0	3,479
Sindhi	0	0	0	0	0
Tamil	7,076	364	0	0	7,440
Telgu	2,853	0	856	0	3,709
<b>Total</b>	<b>428,063</b>	<b>166,459</b>	<b>313,299</b>	<b>0</b>	<b>907,821</b>
School size (Distribution of schools by Enrolment)	Govt. and Local bodies	Pvt. Aided	Pvt. Unaided	Un-recognised	Total
Less than 10	7	0	1	0	8
11-20	18	0	2	0	20
21-30	46	2	5	0	53
31-60	115	9	14	0	138
61-150	249	72	95	0	416
More than 150	858	357	572	0	1,787

## 6- Gender Gap in Enrolment (in %)

Indicator	Primary (1-5)	Upper Primary (6-8)	Secondary (9-10)	Higher Secondary (11-12)	Elementry (1-8)	All (Class 1-12)
<b>All Social Groups</b>	<b>4.03</b>	<b>-0.31</b>	<b>1.36</b>	<b>0.00</b>	<b>3.45</b>	<b>3.38</b>
General	4.78	-0.03	0.92	0.00	4.22	4.12
Schedule Castes (SC)	-0.47	0.52	4.54	0.00	-0.25	-0.02
Schedule Tribes (ST)	0.66	-1.56	2.00	0.00	0.19	0.26
Other Backward Classes (OBC)	2.45	-2.69	0.00	0.00	11.55	10.98
Muslim	2.32	-1.65	-1.40	0.00	1.63	1.52
Nomadic Tribes (NT)	0.24	1.21	8.24	0.00	0.40	0.74
Vimukat Jatis (VJ)	1.82	-3.26	16.23	0.00	0.81	1.31
Special Backward Classes (SBC)	13.47	-0.78	2.36	2.36	11.55	10.98
Bouddhist Minority	-0.75	-2.09	4.07	0.00	-1.02	-0.72
Parshi Minority	1.20	7.69	-25.00	0.00	1.52	0.74
Christan Minority	-1.78	1.91	1.27	0.00	-1.56	-1.51
Sikh Minority	2.69	-22.81	42.86	0.00	1.70	2.09
Jain Minority	-0.44	-23.08	-20.00	0.00	-0.57	-0.58
B. P. L.	3.34	5.77	6.98	0.00	3.88	4.12
Children with Special Needs (C.W.S.N.)	17.15	2.38	19.46	0.00	-1.56	14.82
No. of clusters having gender gap > 10 %	33	26	13	0	30	29
No. of Block having gender gap > 10 %	0	1	0	0	0	0

## 7- Teacher

(Norms as specified in the schedule under section 19 and 23 of the RTE Act)

Indicators	Govt. and Local bodies	Pvt. Aided	Pvt. Unaided	Un-recognised	Total	
Number of Teachers	Male	5,014	540	569	0	6,123
	Female	8,447	3,296	6,666	0	18,409
	<b>Total</b>	<b>13,461</b>	<b>3,836</b>	<b>7,235</b>	<b>0</b>	<b>24,532</b>
Percentage of female teachers to total teachers	62.8	85.9	92.1	0.0	75.0	
Schools without a female teacher	<b>Number</b>	<b>42</b>	<b>4</b>	<b>4</b>	<b>0</b>	<b>50</b>
	%	3.2	0.9	0.6	0.0	2.1

## 7.1- Mediumwise Teacher

Medium	Govt. and Local bodies	Pvt. Aided	Pvt. Unaided	Un-recognised	Total
Marathi	4,834	1,899	370	0	7,103
English	1,196	847	6,489	0	8,532
Hindi	3,369	452	164	0	3,985
Urdu	3,087	321	173	0	3,581
Bangali	0	0	0	0	0
Gujrati	398	301	20	0	719
Kannada	142	6	0	0	148
Sindhi	0	0	0	0	0
Tamil	327	10	0	0	337
Telgu	108	0	19	0	127
<b>Total</b>	<b>13,461</b>	<b>3,836</b>	<b>7,235</b>	<b>0</b>	<b>24,532</b>

## 7.2- Castewise Teacher

Caste	Govt. and Local bodies	Pvt. Aided	Pvt. Unaided	Un-recognised	Total	
All	13,461	3,836	7,235	0	24,532	
Genral	7,699	2,626	6,239	0	16,564	
SC	1,546	364	259	0	2,169	
ST	564	81	82	0	727	
OBC	2,089	537	245	0	2,871	
VJ	609	95	133	0	837	
NT	330	31	16	0	377	
SBC	194	12	23	0	229	
NT-B	0	0	0	0	0	
NT-C	0	0	0	0	0	
NT-D	0	0	0	0	0	
Indicators	Govt. and Local bodies	Pvt. Aided	Pvt. Unaided	Un-recognised	Total	
Schools with single teacher	Number	18	1	3	0	22
	%	1.4	0.2	0.4	0.0	0.9
PTR	Local Body-Only	Primary Section	Upper Primary Section	Secondary Section	Elementry Section	All (Class 1-12)
Pupil Teacher Ratio	32	44	19	32	37	37
Indicators	Govt. and Local bodies	Pvt. Aided	Pvt. Unaided	Un-recognised	Total	
Primary schools having PTR more than 30	Number	76	321	556	0	953
	%	6.6	73.0	80.7	0.0	41.9
Upper Primary having PTR more than 35	Number	94	0	0	0	94
	%	8.7	0.0	0.0	0.0	8.6
Trained /Untrained Teacher	Primary Section	Upper Primary Section	Secondary Section	Higher Secondary Section	Elementry Section	All (Class 1-12)
Teacher All	17,148	6,320	943	121	23,468	24,532
Trained Teacher Number	16,886	6,234	937	119	23,120	24,176
%	98.5	98.6	99.4	98.3	98.5	98.5
Untrained Teacher All Number	262	86	6	2	348	356
%	1.5	1.4	0.6	1.7	1.5	1.5

## 8-Efficiency indicators

### 8.1 Annual Average Drop-out Rate

Social Groups	Primary			UpperPrimary		
	Boys	Girls	Total	Boys	Girls	Total
<b>All Social Groups</b>	-2.40	-2.10	-2.30	0.00	0.00	0.00
<b>General</b>	-2.90	-3.60	-3.20	0.00	0.00	0.00
Schedule Castes (SC)	-4.00	-1.40	-2.70	0.00	0.00	0.00
Schedule Tribes (ST)	13.50	12.00	12.70	0.00	0.00	0.00
Other Backward Classes (OBC)	0.10	6.60	3.40	0.00	0.00	0.00
Vimukat Jatis (VJ)	-4.00	-2.30	-3.10	0.00	0.00	0.00
Nomadic Tribes (NT)	3.70	1.00	2.40	0.00	0.00	0.00
Special Backward Classes (SBC)	42.20	51.20	46.80	0.00	0.00	0.00
Muslim	-10.20	-16.50	-13.20	0.00	0.00	0.00

### 8.2 Transition Rate

Social Groups	Primary			UpperPrimary		
	Boys	Girls	Total	Boys	Girls	Total
<b>All Social Groups</b>	90.5	91.5	91.0	0.0	0.0	0.0
General	89.3	90.2	89.7	0.0	0.0	0.0
Schedule Castes (SC)	99.0	95.5	97.2	0.0	0.0	0.0
Schedule Tribes (ST)	115.6	117.4	116.5	0.0	0.0	0.0
Other Backward Classes (OBC)	90.7	95.5	93.0	0.0	0.0	0.0
VJ / NT	63.7	61.2	62.4	0.0	0.0	0.0
Special Backward Classes (SBC)	77.1	83.8	80.1	0.0	0.0	0.0
Muslim	87.0	87.0	87.0	0.0	0.0	0.0

### 8.3 Gender Parity Index (GPI)

Social Groups	Primary Section	Upper Primary Section	Secondary Section	Higher Secondary Section	Elementry Section	All (Class 1-12)
<b>All Social Groups</b>	0.92	1.01	0.97	0	0.93	0.93
General	0.91	1.00	1.00	0	0.92	0.92
Schedule Castes (SC)	1.01	0.99	0.91	0	1.00	1.00
Schedule Tribes (ST)	0.99	1.03	0.96	0	1.00	0.99
Other Backward Classes (OBC)	0.95	1.06	1.00	0	0.97	0.97
Vimukat Jatis (VJ)	0.96	1.07	0.72	0	0.98	0.97
Nomadic Tribes (NT)	1.00	0.98	0.85	0.00	0.99	0.99
Special Backward Classes (SBC)	0.76	1.02	0.95	0	0.79	0.80
Muslim	0.95	1.03	1.03	0	0.97	0.97

### 8.4 Retention Rate

Social Groups	Primary			UpperPrimary		
	Boys	Girls	Total	Boys	Girls	Total
<b>All Social Groups</b>	98.62	95.60	97.18	0.00	0.00	0.00
General	97.54	94.31	96.01	0.00	0.00	0.00
Schedule Castes (SC)	99.13	95.97	97.55	0.00	0.00	0.00
Schedule Tribes (ST)	66.88	62.09	64.53	0.00	0.00	0.00
Other Backward Classes (OBC)	115.46	113.75	114.54	0.00	0.00	0.00
Muslim	114.46	113.34	97.18	0.00	0.00	0.00