



शिक्षणाचा अधिकार

सर्व शिक्षा अभियान
सारे शिक्षक, पुढे जाऊया

District Profile

Based on Unified District Information System for Education (UDISE), 2012-13

District : Mumbai

1 – Demographic (Source : Census of India,2011)

	Male	Female	Person	Sex Ratio	Child Sex Ratio (0-6 years)
Population	1,711,650	1,434,316	3,145,966		
Literacy rate	90.5	86.0	88.5	838	874

2- Number of Schools by Management and Category

Indicator (Number of schools)	Govt. and Local bodies	Pvt. Aided	Pvt. Unaided	Un-recognised	Total
Primary (1-4)	0	0	0	0	0
Primary with Upper Primary (1-7)	0	0	0	0	0
Pri,Upper,Secondary with Hsecondary (1 to 12)	9	0	33	0	42
Only Upper Primary	0	5	2	0	7
Upper,Secondary with Hsecondary (5 to 12)	0	154	65	0	219
Primary,Upperprimary with Secondary(1 to 10)	4	1	85	0	90
Upperprimary with Secondary(5 to 10)	1	501	334	0	836
Secondary Only (8 to 10)	1	115	68	0	184
Secondary with HSecondary(8 to 12)	2	35	13	0	50
Higher Secondary with college attached (11 to 12)	2	70	67	0	139
Total	19	881	667	0	1,567
Having Primary level classes	13	1	118	0	132
Having Upper Primary level classes	17	811	600	0	1,428
Having Secondary level classes	17	806	598	0	1,421
Having HigherSecondary level classes	13	259	178	0	450
Ratio of Primary to Upper Primary schools	State average				1.6
	District				0.1

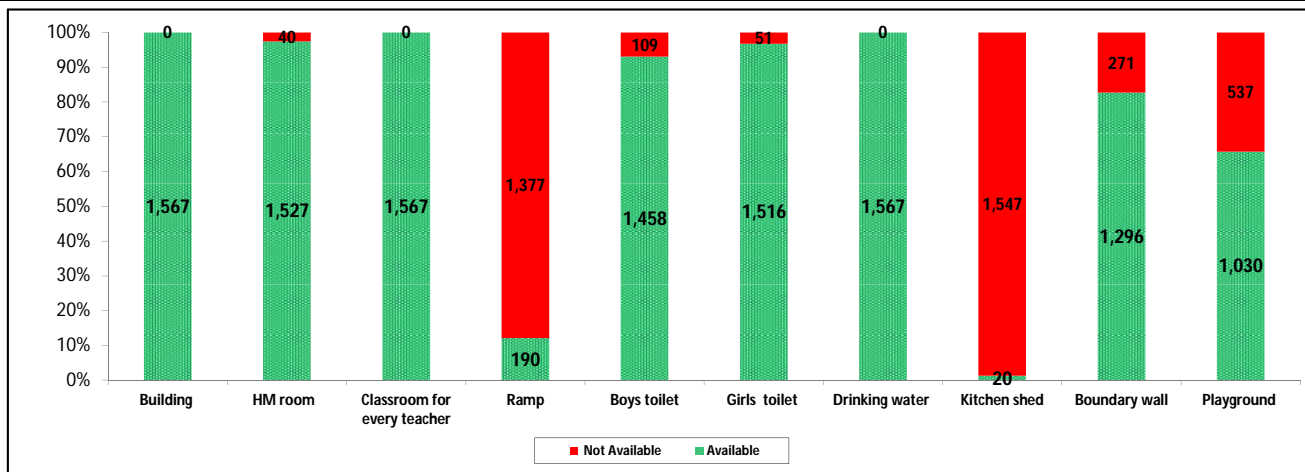
3 - Number of Mediumwise Schools by Management .

Indicator (Number of Mediumwise schools)	Govt. and Local bodies	Pvt. Aided	Pvt. Unaided	Un-recognised	Total
Marathi	1	373	34	0	408
English	16	243	587	0	846
Hindi	1	102	29	0	132
Urdu	0	82	13	0	95
Bangali	0	0	0	0	0
Gujrati	1	67	1	0	69
Kannada	0	14	0	0	14
Sindhi	0	0	0	0	0
Tamil	0	0	2	0	2
Telgu	0	0	1	0	1
Total	19	881	667	0	1,567

4 – Infrastructure

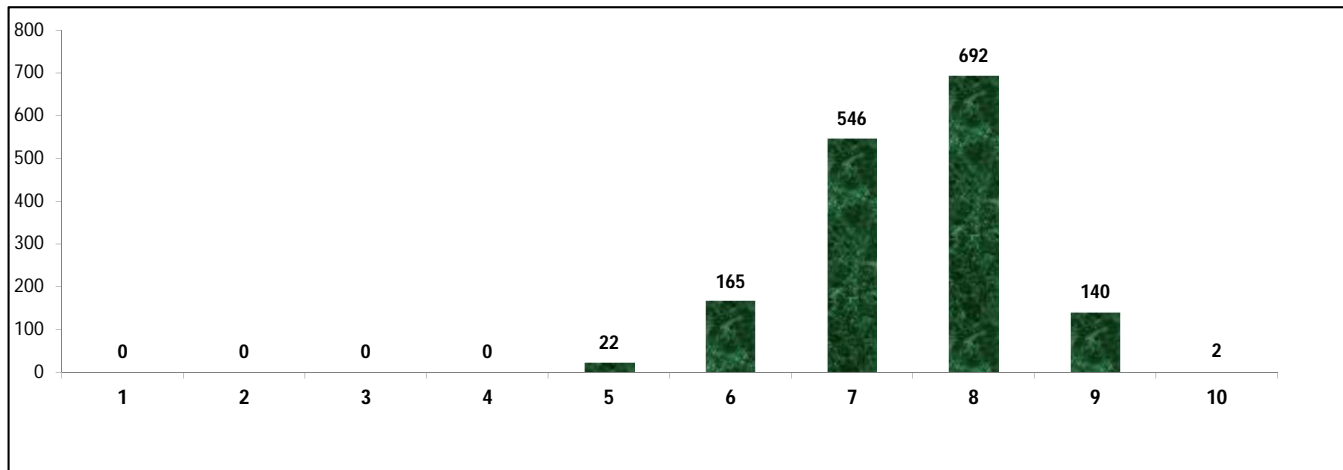
(Norms as specified in the schedule under section 19 of "The right of children to free and compulsory education act, 2009"(RTE Act))

Status of Infrastructure Facilities in Schools (Numbers, All schools)



Indicator : Schools with infrastructure facilities available		Govt. and Local bodies	Pvt. Aided	Pvt. Unaided	Un-recognised	Total
Total Schools		19	881	667	0	1567
1. Building	Number	19	881	667	0	1,567
	%	100.0	100.0	100.0	0.0	100.0
2. Office-cum-store-cum-HM room	Number	19	844	664	0	1,527
	%	100.0	95.8	99.6	0.0	97.4
3. One classroom for every teacher	Number	19	881	667	0	1,567
	%	100.0	100.0	100.0	0.0	100.0
4. Ramp	Number	6	105	79	0	190
	%	31.6	11.9	11.8	0.0	12.1
5. Separate toilet for boys	Number	19	788	651	0	1,458
	%	100.0	89.4	97.6	0.0	93.0
6. Separate toilet for girls	Number	19	837	660	0	1,516
	%	100.0	95.0	99.0	0.0	96.7
7. Drinking water facility	Number	19	881	667	0	1,567
	%	100.0	100.0	100.0	0.0	100.0
8. Kitchen shed	Number	0	19	1	0	20
	%	0.0	2.2	0.1	0.0	1.3
9. Boundary wall	Number	19	726	551	0	1,296
	%	100.0	82.4	82.6	0.0	82.7
10. Playground	Number	17	554	459	0	1,030
	%	89.5	62.9	68.8	0.0	65.7
Indicators		Govt. and Local bodies	Pvt. Aided	Pvt. Unaided	Un-recognised	Total
Number of classrooms(1 to 8)		349	6,877	5,212	0	12,438
Number of classrooms(9 to 10)		98	3,829	2,058	0	5,985
Number of classrooms(11 to 12)		92	2,205	0	0	2,297
Student Classroom Ratio (SCR) Primary		0	UpperPri.	52	Elementry	52
Primary schools having SCR more than 30	Number	0	0	0	0	0
	%	0.0	0.0	0.0	0.0	0.0
Upper Primary. schools having SCR more than 35	Number	0	0	0	0	0
	%	0.0	0.0	0.0	0.0	0.0
Schools fulfilling "10" infrastructure norms for building under RTE	Number	0	1	1	0	2
	%	0.0	0.1	0.1	0.0	0.1

Number of schools by number of infrastructure elements compliyance for building under RTE



5- Enrolment

Number of students enrolled in		Govt. and Local bodies	Pvt. Aided	Pvt. Unaided	Un-recognised	Total
Primary Classes (1-5)	Boys	4,004	41,882	59,800	0	105,686
	Girls	3,326	39,762	46,088	0	89,176
	Total	7,330	81,644	105,888	0	194,862
Upper Primary Classes (6-8)	Boys	2,738	155,252	90,394	0	248,384
	Girls	2,226	141,528	62,744	0	206,498
	Total	4,964	296,780	153,138	0	454,882
Secondary Classes (9-10)	Boys	2,081	115,527	52,451	0	170,059
	Girls	1,471	106,336	38,367	0	146,174
	Total	3,552	221,863	90,818	0	316,233
Higher Secondary Classes (11-12)	Boys	2,499	99,064	47,043	0	148,606
	Girls	1,801	105,986	28,498	0	136,285
	Total	4,300	205,050	75,541	0	284,891
Elementary Classes (1-8)	Boys	6,742	197,134	150,194	0	354,070
	Girls	5,552	181,290	108,832	0	295,674
	Total	12,294	378,424	259,026	0	649,744
All Classes (1-12)	Boys	11,322	411,725	249,688	0	672,735
	Girls	8,824	393,612	175,697	0	578,133
	Total	20,146	805,337	425,385	0	1,250,868

5.1- Castewise Enrolment

Indicator	Primary (1-5)	Upper Primary (6-8)	Secondary (9-10)	Higher Sec. (11-12)	Elementry (1-8)	All (Class 1-12)
All Social Groups	194,862	454,882	316,233	284,891	649,744	1,250,868
General	171,945	371,702	247,264	229,561	543,647	1,020,472
Schedule Castes (SC)	10,334	36,842	30,729	22,444	47,176	100,349
Schedule Tribes (ST)	984	3,262	2,627	2,519	4,246	9,392
Other Backward Classes (OBC)	11,599	43,076	35,613	30,367	54,675	120,655
Muslim	28,195	86,372	57,249	30,531	114,567	202,347
Nomadic Tribes (NT)	1,721	5,802	4,364	3,644	7,523	15,531
Vimukat Jatis (VJ)	537	1,657	1,183	1,322	2,194	4,699
Special Backward Classes (SBC)	608	2,385	1,875	1,904	2,993	6,772
Bouddhist Minority	4,017	14,641	11,850	7,812	18,658	38,320
Parshi Minority	575	1,280	802	610	1,855	3,267
Christan Minority	3,550	10,633	7,095	6,691	14,183	27,969
Sikh Minority	969	2,641	1,731	987	3,610	6,328
Jain Minority	5,725	9,430	6,482	3,920	15,155	25,557
B. P. L.	462	1,417	1,474	509	1,879	3,862
Children with Special Needs (C.W.S.N.)	1,051	3,258	1,879	664	4,309	6,852

5.2- Mediumwise Enrolment

Indicator (Number of Mediumwise schools)	Govt. and Local bodies	Pvt. Aided	Pvt. Unaided	Un-recognised	Total
Marathi	189	266,498	8,249	0	274,936
English	19,272	337,602	403,905	0	760,779
Hindi	32	84,105	9,068	0	93,205
Urdu	0	57,015	3,646	0	60,661
Bangali	0	0	0	0	0
Gujrati	653	55,568	182	0	56,403
Kannada	0	4,549	0	0	4,549
Sindhi	0	0	0	0	0
Tamil	0	0	127	0	127
Telgu	0	0	208	0	208
Total	20,146	805,337	425,385	0	1,250,868
School size (Distribution of schools by Enrolment)	Govt. and Local bodies	Pvt. Aided	Pvt. Unaided	Un-recognised	Total
Less than 10	0	0	0	0	0
11-20	0	1	2	0	3
21-30	0	1	6	0	7
31-60	1	25	15	0	41
61-150	0	106	98	0	204
More than 150	18	748	546	0	1,312

6- Gender Gap in Enrolment (in %)

Indicator	Primary (1-5)	Upper Primary (6-8)	Secondary (9-10)	Higher Secondary (11-12)	Elementry (1-8)	All (Class 1-12)
All Social Groups	8.47	9.21	7.55	4.32	8.99	7.56
General	8.84	9.77	7.96	5.08	9.48	8.12
Schedule Castes (SC)	6.70	6.52	6.75	-2.66	6.56	4.56
Schedule Tribes (ST)	12.80	7.30	8.41	-3.61	8.57	5.26
Other Backward Classes (OBC)	4.22	6.78	5.36	0.42	7.45	3.84
Muslim	7.05	5.46	2.28	2.54	5.85	4.34
Nomadic Tribes (NT)	12.03	9.41	8.16	6.37	10.01	8.63
Vimukat Jatis (VJ)	8.01	11.53	7.02	-8.02	10.67	4.49
Special Backward Classes (SBC)	4.93	8.09	1.55	1.55	7.45	3.84
Bouddhist Minority	6.10	5.69	5.35	-0.38	5.78	4.39
Parshi Minority	-17.91	-17.50	-17.71	5.25	-17.63	-13.38
Christan Minority	5.41	7.06	4.44	-10.24	6.65	2.05
Sikh Minority	-5.06	-9.13	-2.37	2.53	-8.03	-4.84
Jain Minority	5.43	-1.02	-2.93	-5.61	1.42	-0.76
B. P. L.	1.30	23.50	30.39	41.06	18.04	25.79
Children with Special Needs (C.W.S.N.)	14.75	10.87	10.27	22.29	6.65	12.41
No. of clusters having gender gap > 10 %	13	20	15	13	18	14
No. of Block having gender gap > 10 %	2	3	0	1	1	1

7- Teacher

(Norms as specified in the schedule under section 19 and 23 of the RTE Act)

Indicators	Govt. and Local bodies	Pvt. Aided	Pvt. Unaided	Un-recognised	Total	
Number of Teachers	Male	221	8,340	2,655	0	11,216
	Female	493	12,884	9,527	0	22,904
	Total	714	21,224	12,182	0	34,120
Percentage of female teachers to total teachers	69.0	60.7	78.2	0.0	67.1	
Schools without a female teacher	Number	0	67	6	0	73
	%	0.0	7.6	0.9	0.0	4.7

7.1- Mediumwise Teacher

Medium	Govt. and Local bodies	Pvt. Aided	Pvt. Unaided	Un-recognised	Total
Marathi	19	8,230	372	0	8,621
English	663	7,448	11,432	0	19,543
Hindi	8	2,241	238	0	2,487
Urdu	0	1,563	114	0	1,677
Bangali	0	0	0	0	0
Gujrati	24	1,579	12	0	1,615
Kannada	0	163	0	0	163
Sindhi	0	0	0	0	0
Tamil	0	0	10	0	10
Telgu	0	0	4	0	4
Total	714	21,224	12,182	0	34,120

7.2- Castewise Teacher

Caste	Govt. and Local bodies	Pvt. Aided	Pvt. Unaided	Un-recognised	Total
All	714	21,224	12,182	0	34,120
Genral	604	15,586	11,406	1	27,597
SC	52	1,823	355	#DIV/0!	#DIV/0!
ST	16	511	47	0	574
OBC	37	2,184	279	0	2,500
VJ	1	521	52	0	574
NT	1	190	6	0	197
SBC	2	155	17	0	174
NT-B	0	59	7	0	66
NT-C	0	9	9	0	18
NT-D	1	4	4	0	9

Indicators		Govt. and Local bodies	Pvt. Aided	Pvt. Unaided	Un-recognised	Total
Schools with single teacher	Number	0	0	0	0	0
	%	0.0	0.0	0.0	0.0	0.0
PTR	Local Body-Only	Primary Section	Upper Primary Section	Secondary Section	Elementry Section	All (Class 1-12)
Pupil Teacher Ratio	17	0	44	20	54	37

Indicators		Govt. and Local bodies	Pvt. Aided	Pvt. Unaided	Un-recognised	Total
Primary schools having PTR more than 30	Number	0	0	0	0	0
	%	0.0	0.0	0.0	0.0	0.0
Upper Primary having PTR more than 35	Number	5	386	211	1	603
	%	29.4	47.6	35.2	#DIV/0!	42.2
Trained /Untrained Teacher	Primary Section	Upper Primary Section	Secondary Section	Higher Secondary Section	Elementry Section	All (Class 1-12)
Teacher All	1,712	10,382	16,026	6,000	12,094	34,120
Trained Teacher Number	1,710	10,373	16,017	5,964	12,083	34,064
%	99.9	99.9	99.9	99.4	99.9	99.8
Untrained Teacher All Number	2	9	9	36	11	56
%	0.1	0.1	0.1	0.6	0.1	0.2

8-Efficiency indicators

8.1 Annual Average Drop-out Rate

Social Groups	Primary			UpperPrimary		
	Boys	Girls	Total	Boys	Girls	Total
All Social Groups	0.00	0.00	0.00	1.10	1.70	1.40
General	0.00	0.00	0.00	-0.60	-1.40	-1.00
Schedule Castes (SC)	0.00	0.00	0.00	-0.20	1.60	0.60
Schedule Tribes (ST)	0.00	0.00	0.00	4.70	7.30	5.90
Other Backward Classes (OBC)	0.00	0.00	0.00	14.20	21.00	17.50
Vimukat Jatis (VJ)	0.00	0.00	0.00	0.30	2.20	1.20
Nomadic Tribes (NT)	0.00	0.00	0.00	-7.60	-7.20	-7.40
Special Backward Classes (SBC)	0.00	0.00	0.00	31.20	36.60	33.90
Muslim	0.00	0.00	0.00	-3.50	-0.40	-2.00

8.2 Transition Rate

Social Groups	Primary			UpperPrimary		
	Boys	Girls	Total	Boys	Girls	Total
All Social Groups	0.0	0.0	0.0	102.3	101.3	102.3
General	0.0	0.0	0.0	103.4	102.0	102.7
Schedule Castes (SC)	0.0	0.0	0.0	108.0	104.7	106.4
Schedule Tribes (ST)	0.0	0.0	0.0	120.8	141.6	130.4
Other Backward Classes (OBC)	0.0	0.0	0.0	94.4	94.4	92.0
VJ / NT	0.0	0.0	0.0	55.3	52.5	53.9
Special Backward Classes (SBC)	0.0	0.0	0.0	93.3	87.7	90.6
Muslim	0.0	0.0	0.0	94.9	89.1	92.0

8.3 Gender Parity Index (GPI)

Social Groups	Primary Section	Upper Primary Section	Secondary Section	Higher Secondary Section	Elementry Section	All (Class 1-12)
All Social Groups	0.84	0.83	0.86	0.92	0.84	0.86
General	0.84	0.82	0.82	0.90	0.83	0.85
Schedule Castes (SC)	0.87	0.88	0.87	0.87	0.88	0.91
Schedule Tribes (ST)	0.77	0.86	0.84	1.07	0.84	0.90
Other Backward Classes (OBC)	0.92	0.87	0.90	0.92	0.88	0.90
Vimukat Jatis (VJ)	0.85	0.79	0.87	1.17	0.81	0.91
Nomadic Tribes (NT)	0.79	0.83	0.85	0.88	0.82	0.84
Special Backward Classes (SBC)	0.91	0.85	0.97	0.99	0.86	0.93
Muslim	0.87	0.90	0.96	0.95	0.89	0.92

8.4 Retention Rate

Social Groups	Primary			UpperPrimary		
	Boys	Girls	Total	Boys	Girls	Total
All Social Groups	0.00	0.00	0.00	106.80	106.80	104.30
General	0.00	0.00	0.00	109.70	109.70	104.40
Schedule Castes (SC)	0.00	0.00	0.00	91.20	85.90	88.70
Schedule Tribes (ST)	0.00	0.00	0.00	58.60	64.90	61.40
Other Backward Classes (OBC)	0.00	0.00	0.00	109.10	103.70	106.50
Muslim	0.00	0.00	0.00	115.90	113.70	104.30