



## District Profile

Based on Unified District Information System for Education (UDISE), 2012-13

District : Nagpur

1 – Demographic (Source : Census of India,2011)

	Male	Female	Person	Sex Ratio	Child Sex Ratio (0-6 years)
Population	2,388,558	2,264,613	4,653,171		
Literacy rate	93.8	85.1	89.5	948	926

2- Number of Schools by Management and Category

Indicator (Number of schools )	Govt. and Local bodies	Pvt. Aided	Pvt. Unaided	Un-recognised	Total
Primary (1-4)	1,173	236	281	34	1,724
Primary with Upper Primary (1-7)	592	221	299	6	1,118
Pri,Upper,Secondary with Hsecondary (1 to 12)	7	4	28	1	40
Only Upper Primary	0	0	0	0	0
Upper,Secondary with Hsecondary (5 to 12)	14	222	9	0	245
Primary,Upperprimary with Secondary(1 to 10)	58	9	56	1	124
Upperprimary with Secondary(5 to 10)	31	280	34	0	345
Secondary Only (8 to 10)	7	96	122	0	225
Secondary with HSecondary(8 to 12)	1	19	26	0	46
Higher Secondary with college attached (11 to 12)	1	41	19	0	61
<b>Total</b>	<b>1,884</b>	<b>1,128</b>	<b>874</b>	<b>42</b>	<b>3,928</b>
Having Primary level classes	1,830	470	664	42	3,006
Having Upper Primary level classes	710	851	574	8	2,143
Having Secondary level classes	118	630	275	2	1,025
Having HigherSecondary level classes	23	286	82	1	392
Ratio of Primary to Upper Primary schools	State average				1.6
	District				1.4

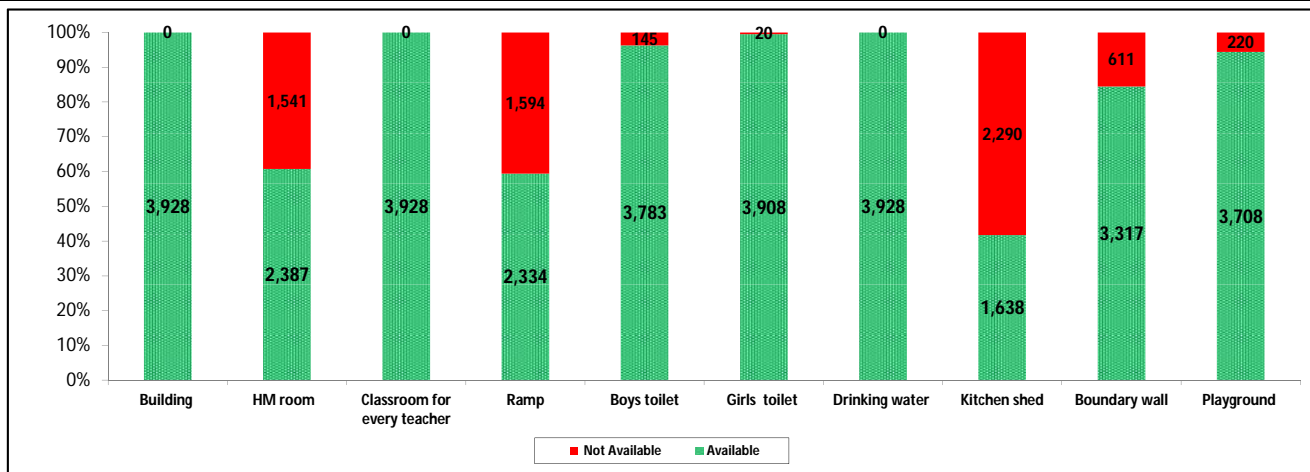
3 - Number of Mediumwise Schools by Management .

Indicator (Number of Mediumwise schools )	Govt. and Local bodies	Pvt. Aided	Pvt. Unaided	Un-recognised	Total
Marathi	1,712	912	158	4	2,786
English	8	26	649	38	721
Hindi	108	134	50	0	292
Urdu	56	55	17	0	128
Bangali	0	0	0	0	0
Gujrati	0	1	0	0	1
Kannada	0	0	0	0	0
Sindhi	0	0	0	0	0
Tamil	0	0	0	0	0
Telgu	0	0	0	0	0
<b>Total</b>	<b>1,884</b>	<b>1,128</b>	<b>874</b>	<b>42</b>	<b>3,928</b>

## 4 – Infrastructure

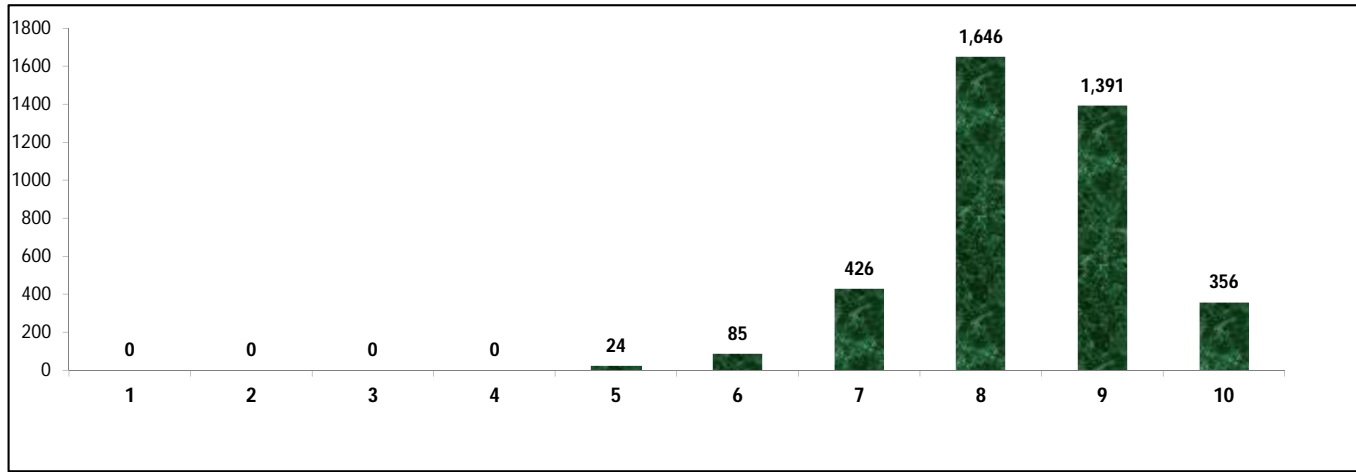
(Norms as specified in the schedule under section 19 of "The right of children to free and compulsory education act, 2009" ( RTE Act ) )

### Status of Infrastructure Facilities in Schools (Numbers, All schools)



Indicator : Schools with infrastructure facilities available		Govt. and Local bodies	Pvt. Aided	Pvt. Unaided	Un-recognised	Total
<b>Total Schools</b>		<b>1884</b>	<b>1128</b>	<b>874</b>	<b>42</b>	<b>3928</b>
1. Building	Number	1,884	1,128	874	42	3,928
	%	100.0	100.0	100.0	100.0	100.0
2. Office-cum-store-cum-HM room	Number	526	1,002	817	42	2,387
	%	27.9	88.8	93.5	100.0	60.8
3. One classroom for every teacher	Number	1,884	1,128	874	42	3,928
	%	100.0	100.0	100.0	100.0	100.0
4. Ramp	Number	1,818	336	175	5	2,334
	%	96.5	29.8	20.0	11.9	59.4
5. Separate toilet for boys	Number	1,858	1,026	857	42	3,783
	%	98.6	91.0	98.1	100.0	96.3
6. Separate toilet for girls	Number	1,879	1,115	872	42	3,908
	%	99.7	98.8	99.8	100.0	99.5
7. Drinking water facility	Number	1,884	1,128	874	42	3,928
	%	100.0	100.0	100.0	100.0	100.0
8. Kitchen shed	Number	908	681	42	7	1,638
	%	48.2	60.4	4.8	16.7	41.7
9. Boundary wall	Number	1,503	959	814	41	3,317
	%	79.8	85.0	93.1	97.6	84.4
10. Playground	Number	1,827	1,046	799	36	3,708
	%	97.0	92.7	91.4	85.7	94.4
<b>Indicators</b>		<b>Govt. and Local bodies</b>	<b>Pvt. Aided</b>	<b>Pvt. Unaided</b>	<b>Un-recognised</b>	<b>Total</b>
Number of classrooms(1 to 8)		7,456	7,899	6,786	237	22,378
Number of classrooms(9 to 10)		196	2,125	768	1	3,090
Number of classrooms(11 to 12)		69	1,166	0	0	1,235
<b>Student Classroom Ratio (SCR) Primary</b>		<b>22</b>	<b>UpperPri.</b>	<b>32</b>	<b>Elementry</b>	<b>29</b>
Primary schools having SCR more than 30	Number	93	141	61	3	298
	%	4.9	12.5	7.0	7.1	7.6
Upper Primary. schools having SCR more than 35	Number	35	362	83	0	480
	%	1.9	32.1	9.5	0.0	12.2
<b>Schools fulfilling "10" infrastructure norms for building under RTE</b>	Number	<b>197</b>	<b>143</b>	<b>15</b>	<b>1</b>	<b>356</b>
	%	10.5	12.7	1.7	2.4	9.1

**Number of schools by number of infrastructure elements complinace for building under RTE**



**5- Enrolment**

Number of students enrolled in		Govt. and Local bodies	Pvt. Aided	Pvt. Unaided	Un-recognised	Total
Primary Classes (1-5)	Boys	58,703	72,570	77,526	1,647	210,446
	Girls	57,307	71,241	61,598	1,230	191,376
	Total	116,010	143,811	139,124	2,877	401,822
Upper Primary Classes (6-8)	Boys	20,390	79,497	28,342	76	128,305
	Girls	19,818	77,062	20,037	48	116,965
	Total	40,208	156,559	48,379	124	245,270
Secondary Classes (9-10)	Boys	6,256	58,032	15,701	8	79,997
	Girls	6,004	58,128	11,275	7	75,414
	Total	12,260	116,160	26,976	15	155,411
Higher Secondary Classes (11-12)	Boys	2,219	43,257	7,272	0	52,748
	Girls	2,313	49,694	5,901	0	57,908
	Total	4,532	92,951	13,173	0	110,656
Elementary Classes (1-8)	Boys	<b>79,093</b>	<b>152,067</b>	<b>105,868</b>	<b>1,723</b>	<b>338,751</b>
	Girls	<b>77,125</b>	<b>148,303</b>	<b>81,635</b>	<b>1,278</b>	<b>308,341</b>
	Total	<b>156,218</b>	<b>300,370</b>	<b>187,503</b>	<b>3,001</b>	<b>647,092</b>
All Classes (1-12)	Boys	87,568	253,356	128,841	1,731	471,496
	Girls	85,442	256,125	98,811	1,285	441,663
	Total	173,010	509,481	227,652	3,016	913,159

**5.1- Castewise Enrolment**

Indicator	Primary (1-5)	Upper Primary (6-8)	Secondary (9-10)	Higher Sec. (11-12)	Elementry (1-8)	All (Class 1-12)
<b>All Social Groups</b>	<b>401,822</b>	<b>245,270</b>	<b>155,411</b>	<b>110,656</b>	<b>647,092</b>	<b>913,159</b>
General	76,838	44,675	27,211	22,666	121,513	171,390
Schedule Castes (SC)	76,978	48,201	31,188	22,089	125,179	178,456
Schedule Tribes (ST)	43,968	23,509	13,631	7,327	67,477	88,435
Other Backward Classes (OBC)	204,038	128,885	83,381	58,574	332,923	474,878
Muslim	41,048	20,805	11,227	5,634	61,853	78,714
Nomadic Tribes (NT)	24,682	15,901	9,617	5,461	40,583	55,661
Vimukat Jatis (VJ)	3,767	2,056	1,204	933	5,823	7,960
Special Backward Classes (SBC)	10,055	7,760	5,467	3,509	17,815	26,791
Bouddhist Minority	6,475	3,183	1,727	1,100	9,658	12,485
Parshi Minority	76	118	82	155	194	431
Christan Minority	1,500	989	633	392	2,489	3,514
Sikh Minority	1,037	632	406	295	1,669	2,370
Jain Minority	521	452	384	262	973	1,619
B. P. L.	25,327	12,814	6,783	2,872	38,141	47,796
Children with Special Needs (C.W.S.N.)	7,135	4,270	2,147	951	11,405	14,503

## 5.2- Mediumwise Enrolment

Indicator (Number of Mediumwise schools )	Govt. and Local bodies	Pvt. Aided	Pvt. Unaided	Un-recognised	Total
Marathi	127,001	371,331	21,329	556	520,217
English	8,185	25,105	196,552	2,460	232,302
Hindi	26,914	88,221	7,995	0	123,130
Urdu	10,910	24,805	1,776	0	37,491
Bangali	0	0	0	0	0
Gujrati	0	19	0	0	19
Kannada	0	0	0	0	0
Sindhi	0	0	0	0	0
Tamil	0	0	0	0	0
Telgu	0	0	0	0	0
<b>Total</b>	<b>173,010</b>	<b>509,481</b>	<b>227,652</b>	<b>3,016</b>	<b>913,159</b>
School size (Distribution of schools by Enrolment)	Govt. and Local bodies	Pvt. Aided	Pvt. Unaided	Un-recognised	Total
Less than 10	107	2	11	2	122
11-20	310	2	23	7	342
21-30	285	11	37	3	336
31-60	371	29	135	10	545
61-150	523	209	268	16	1,016
More than 150	288	875	400	4	1,567

## 6- Gender Gap in Enrolment (in %)

Indicator	Primary (1-5)	Upper Primary (6-8)	Secondary (9-10)	Higher Secondary (11-12)	Elementry (1-8)	All (Class 1-12)
All Social Groups	4.75	4.62	2.95	-4.66	4.70	3.27
General	5.84	5.81	3.11	-1.16	5.83	4.47
Schedule Castes (SC)	4.28	4.84	3.69	-5.16	4.49	3.16
Schedule Tribes (ST)	4.90	4.44	0.76	-4.52	4.74	3.36
Other Backward Classes (OBC)	4.48	4.17	2.98	-4.42	3.04	2.89
Muslim	3.97	3.23	-1.88	-14.27	3.72	1.63
Nomadic Tribes (NT)	3.16	5.57	1.69	-4.63	4.10	2.83
Vimukat Jatis (VJ)	9.53	11.48	17.77	-7.61	10.22	9.27
Special Backward Classes (SBC)	2.46	3.79	7.08	7.08	3.04	2.89
Bouddhist Minority	4.46	20.08	22.87	10.36	9.61	11.51
Parshi Minority	7.89	35.59	21.95	-0.65	24.74	15.08
Christan Minority	-5.20	-5.97	-14.38	-16.33	-5.50	-8.31
Sikh Minority	8.97	13.61	13.30	5.09	10.72	10.46
Jain Minority	5.57	-4.42	12.50	-4.58	0.92	2.78
B. P. L.	0.39	-4.40	-9.83	-9.19	-1.22	-2.92
Children with Special Needs (C.W.S.N.)	18.09	1.31	2.00	6.62	-5.50	10.02
No. of clusters having gender gap > 10 %	17	35	37	20	18	15
No. of Block having gender gap > 10 %	0	2	2	1	0	0

## 7- Teacher

(Norms as specified in the schedule under section 19 and 23 of the RTE Act)

Indicators	Govt. and Local bodies	Pvt. Aided	Pvt. Unaided	Un-recognised	Total
Number of Teachers	Male	3,720	7,521	1,144	12,400
	Female	4,570	8,047	6,408	19,168
	<b>Total</b>	<b>8,290</b>	<b>15,568</b>	<b>7,552</b>	<b>31,568</b>
Percentage of female teachers to total teachers	55.1	51.7	84.9	90.5	60.7
Schools without a female teacher	<b>Number</b>	<b>498</b>	<b>53</b>	<b>13</b>	<b>0</b>
	%	26.4	4.7	1.5	0.0

## 7.1- Mediumwise Teacher

Medium	Govt. and Local bodies	Pvt. Aided	Pvt. Unaided	Un-recognised	Total
Marathi	6,702	11,793	854	17	19,366
English	283	595	6,387	141	7,406
Hindi	972	2,447	248	0	3,667
Urdu	333	732	63	0	1,128
Bangali	0	0	0	0	0
Gujrati	0	1	0	0	1
Kannada	0	0	0	0	0
Sindhi	0	0	0	0	0
Tamil	0	0	0	0	0
Telgu	0	0	0	0	0
<b>Total</b>	<b>8,290</b>	<b>15,568</b>	<b>7,552</b>	<b>158</b>	<b>31,568</b>

## 7.2- Castewise Teacher

Caste	Govt. and Local bodies	Pvt. Aided	Pvt. Unaided	Un-recognised	Total	
All	8,290	15,568	7,552	158	31,568	
Genral	906	4,403	3,338	51	8,698	
SC	1,416	2,316	986	32	4,750	
ST	605	921	275	6	1,807	
OBC	4,244	6,324	2,433	59	13,060	
VJ	519	748	327	4	1,598	
NT	311	555	81	1	948	
SBC	219	189	60	1	469	
NT-B	31	37	5	2	75	
NT-C	28	2	2	0	32	
NT-D	10	2	2	0	14	
Indicators	Govt. and Local bodies	Pvt. Aided	Pvt. Unaided	Un-recognised	Total	
Schools with single teacher	Number	16	4	10	5	35
	%	0.8	0.4	1.1	11.9	0.9
PTR	Local Body-Only	Primary Section	Upper Primary Section	Secondary Section	Elementry Section	All (Class 1-12)
Pupil Teacher Ratio	20	33	23	26	28	29
Indicators	Govt. and Local bodies	Pvt. Aided	Pvt. Unaided	Un-recognised	Total	
Primary schools having PTR more than 30	Number	110	162	99	6	377
	%	6.0	34.5	14.9	14.3	12.5
Upper Primary having PTR more than 35	Number	25	153	63	0	241
	%	3.5	18.0	11.0	0.0	11.2
Trained /Untrained Teacher	Primary Section	Upper Primary Section	Secondary Section	Higher Secondary Section	Elementry Section	All (Class 1-12)
Teacher All	12,228	10,759	5,968	2,613	22,987	31,568
Trained Teacher Number	12,059	10,677	5,934	2,597	22,736	31,267
%	98.6	99.2	99.4	99.4	98.9	99.0
Untrained Teacher All Number	169	82	34	16	251	301
%	1.4	0.8	0.6	0.6	1.1	1.0

## 8-Efficiency indicators

### 8.1 Annual Average Drop-out Rate

Social Groups	Primary			UpperPrimary		
	Boys	Girls	Total	Boys	Girls	Total
<b>All Social Groups</b>	0.01	2.38	0.99	0.61	1.10	0.85
<b>General</b>	-0.12	3.85	1.79	7.10	9.61	8.30
Schedule Castes (SC)	-0.92	1.94	0.46	2.14	1.71	1.93
Schedule Tribes (ST)	5.48	6.47	5.95	4.12	7.03	5.53
Other Backward Classes (OBC)	-4.48	-4.48	-4.48	-3.22	-3.67	-3.43
Vimukat Jatis (VJ)	5.64	15.83	10.48	16.96	23.47	19.97
Nomadic Tribes (NT)	5.00	3.99	4.51	3.23	6.63	4.86
Special Backward Classes (SBC)	-3.40	-5.26	-4.30	5.98	7.87	6.90
Muslim	-2.06	3.79	0.83	5.74	12.61	9.20

### 8.2 Transition Rate

Social Groups	Primary			UpperPrimary		
	Boys	Girls	Total	Boys	Girls	Total
<b>All Social Groups</b>	101.2	99.8	100.6	98.6	98.7	98.7
General	101.0	99.6	100.3	92.6	90.0	91.3
Schedule Castes (SC)	101.1	98.4	99.8	96.9	98.4	97.6
Schedule Tribes (ST)	84.3	84.0	84.1	94.9	90.7	92.8
Other Backward Classes (OBC)	105.5	104.4	105.0	102.2	102.2	102.9
VJ / NT	100.6	105.1	102.7	108.8	110.1	109.4
Special Backward Classes (SBC)	125.5	108.9	117.3	101.6	97.4	99.5
Muslim	96.9	93.6	95.2	91.1	84.4	87.6

### 8.3 Gender Parity Index (GPI)

Social Groups	Primary Section	Upper Primary Section	Secondary Section	Higher Secondary Section	Elementary Section	All (Class 1-12)
<b>All Social Groups</b>	0.91	0.91	0.94	1.10	0.91	0.94
General	0.89	0.89	0.89	1.02	0.89	0.91
Schedule Castes (SC)	0.92	0.91	0.93	0.93	0.91	0.94
Schedule Tribes (ST)	0.91	0.92	0.99	1.09	0.91	0.94
Other Backward Classes (OBC)	0.91	0.92	0.94	1.12	0.92	0.94
Vimukat Jatis (VJ)	0.83	0.79	0.70	1.16	0.81	0.83
Nomadic Tribes (NT)	0.94	0.89	0.97	1.10	0.92	0.94
Special Backward Classes (SBC)	0.95	0.93	0.87	1.09	0.94	0.94
Muslim	0.92	0.94	1.04	1.33	0.93	0.97

### 8.4 Retention Rate

Social Groups	Primary			UpperPrimary		
	Boys	Girls	Total	Boys	Girls	Total
<b>All Social Groups</b>	107.23	104.40	105.87	100.66	100.66	100.49
General	106.43	105.54	106.00	101.04	101.04	101.14
Schedule Castes (SC)	108.23	101.26	104.82	98.02	99.17	98.58
Schedule Tribes (ST)	88.96	88.69	88.83	89.49	85.92	87.71
Other Backward Classes (OBC)	88.96	88.69	88.83	103.83	103.60	103.72
Muslim	106.55	111.08	105.87	96.86	86.03	100.49