



शिक्षणाचा अधिकार

सर्व शिक्षा अभियान  
सारे शिक्षक, पुढे जाऊया

# District Profile

Based on Unified District Information System for Education (UDISE), 2012-13

District : Nanded

1 – Demographic (Source : Census of India,2011)

	Male	Female	Person	Sex Ratio	Child Sex Ratio (0-6 years)
Population	1,732,567	1,623,999	3,356,566		
Literacy rate	86.6	66.7	76.9	937	897

2- Number of Schools by Management and Category

Indicator (Number of schools )	Govt. and Local bodies	Pvt. Aided	Pvt. Unaided	Un-recognised	Total
Primary (1-4)	1,180	146	86	1	1,413
Primary with Upper Primary (1-7)	1,004	280	73	0	1,357
Pri,Upper,Secondary with Hsecondary (1 to 12)	17	11	5	0	33
Only Upper Primary	1	0	0	0	1
Upper,Secondary with Hsecondary (5 to 12)	3	144	15	0	162
Primary,Upperprimary with Secondary(1 to 10)	63	23	14	0	100
Upperprimary with Secondary(5 to 10)	12	169	40	0	221
Secondary Only (8 to 10)	13	61	51	0	125
Secondary with HSecondary(8 to 12)	0	14	4	0	18
Higher Secondary with college attached (11 to 12)	1	30	32	0	63
<b>Total</b>	<b>2,294</b>	<b>878</b>	<b>320</b>	<b>1</b>	<b>3,493</b>
Having Primary level classes	2,264	460	178	1	2,903
Having Upper Primary level classes	1,113	702	202	0	2,017
Having Secondary level classes	108	422	129	0	659
Having HigherSecondary level classes	21	199	56	0	276
Ratio of Primary to Upper Primary schools	State average				1.6
	District				1.4

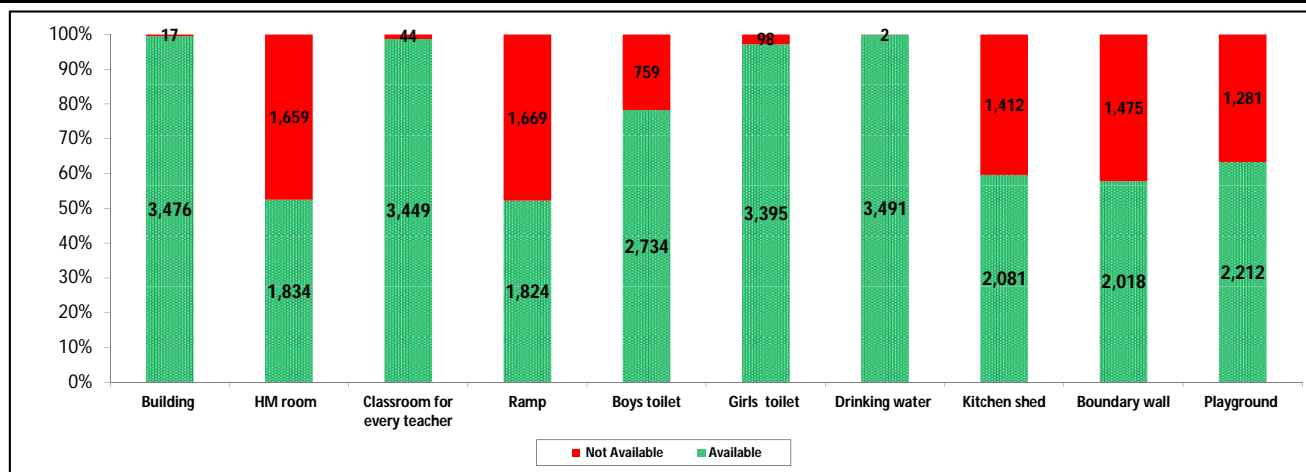
3 - Number of Mediumwise Schools by Management .

Indicator (Number of Mediumwise schools )	Govt. and Local bodies	Pvt. Aided	Pvt. Unaided	Un-recognised	Total
Marathi	2,262	800	189	0	3,251
English	7	3	101	1	112
Hindi	0	5	0	0	5
Urdu	25	69	30	0	124
Bangali	0	0	0	0	0
Gujrati	0	0	0	0	0
Kannada	0	0	0	0	0
Sindhi	0	0	0	0	0
Tamil	0	0	0	0	0
Telgu	0	1	0	0	1
<b>Total</b>	<b>2,294</b>	<b>878</b>	<b>320</b>	<b>1</b>	<b>3,493</b>

## 4 – Infrastructure

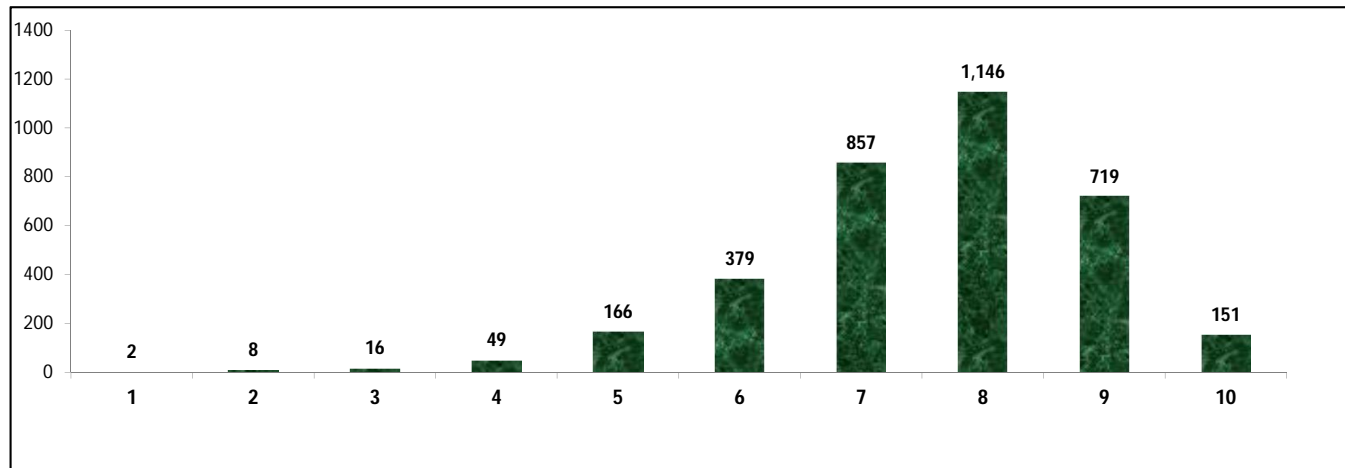
(Norms as specified in the schedule under section 19 of "The right of children to free and compulsory education act, 2009"( RTE Act ) )

### Status of Infrastructure Facilities in Schools (Numbers, All schools)



Indicator : Schools with infrastructure facilities available		Govt. and Local bodies	Pvt. Aided	Pvt. Unaided	Un-recognised	Total
<b>Total Schools</b>		<b>2294</b>	<b>878</b>	<b>320</b>	<b>1</b>	<b>3493</b>
1. Building	Number	2,279	877	319	1	3,476
	%	99.3	99.9	99.7	100.0	99.5
2. Office-cum-store-cum-HM room	Number	776	777	280	1	1,834
	%	33.8	88.5	87.5	100.0	52.5
3. One classroom for every teacher	Number	2,256	874	318	1	3,449
	%	98.3	99.5	99.4	100.0	98.7
4. Ramp	Number	1,689	101	34	0	1,824
	%	73.6	11.5	10.6	0.0	52.2
5. Separate toilet for boys	Number	1,799	679	255	1	2,734
	%	78.4	77.3	79.7	100.0	78.3
6. Separate toilet for girls	Number	2,243	842	309	1	3,395
	%	97.8	95.9	96.6	100.0	97.2
7. Drinking water facility	Number	2,294	878	318	1	3,491
	%	100.0	100.0	99.4	100.0	99.9
8. Kitchen shed	Number	1,698	365	18	0	2,081
	%	74.0	41.6	5.6	0.0	59.6
9. Boundary wall	Number	1,122	646	249	1	2,018
	%	48.9	73.6	77.8	100.0	57.8
10. Playground	Number	1,217	728	266	1	2,212
	%	53.1	82.9	83.1	100.0	63.3
<b>Indicators</b>		<b>Govt. and Local bodies</b>	<b>Pvt. Aided</b>	<b>Pvt. Unaided</b>	<b>Un-recognised</b>	<b>Total</b>
Number of classrooms(1 to 8)		9,342	5,474	1,560	5	16,381
Number of classrooms(9 to 10)		226	1,353	279	0	1,858
Number of classrooms(11 to 12)		27	841	0	0	868
<b>Student Classroom Ratio (SCR) Primary</b>		<b>20</b>	<b>UpperPri.</b>	<b>36</b>	<b>Elementry</b>	<b>32</b>
Primary schools having SCR more than 30	Number	137	55	13	0	205
	%	6.0	6.3	4.1	0.0	5.9
Upper Primary. schools having SCR more than 35	Number	43	270	40	0	353
	%	1.9	30.8	12.5	0.0	10.1
<b>Schools fulfilling "10" infrastructure norms for building under RTE</b>	Number	124	24	3	0	151
	%	5.4	2.7	0.9	0.0	4.3

**Number of schools by number of infrastructure elements complinace for building under RTE**



**5- Enrolment**

Number of students enrolled in		Govt. and Local bodies	Pvt. Aided	Pvt. Unaided	Un-recognised	Total
Primary Classes (1-5)	Boys	100,871	61,070	19,150	26	181,117
	Girls	102,606	53,366	11,902	17	167,891
	<b>Total</b>	<b>203,477</b>	<b>114,436</b>	<b>31,052</b>	<b>43</b>	<b>349,008</b>
Upper Primary Classes (6-8)	Boys	25,066	58,230	8,059	0	91,355
	Girls	27,954	51,985	5,447	0	85,386
	<b>Total</b>	<b>53,020</b>	<b>110,215</b>	<b>13,506</b>	<b>0</b>	<b>176,741</b>
Secondary Classes (9-10)	Boys	5,308	37,248	6,142	0	48,698
	Girls	4,832	32,498	4,390	0	41,720
	<b>Total</b>	<b>10,140</b>	<b>69,746</b>	<b>10,532</b>	<b>0</b>	<b>90,418</b>
Higher Secondary Classes (11-12)	Boys	378	26,168	2,386	0	28,932
	Girls	250	19,826	1,493	0	21,569
	<b>Total</b>	<b>628</b>	<b>45,994</b>	<b>3,879</b>	<b>0</b>	<b>50,501</b>
Elementary Classes (1-8)	<b>Boys</b>	<b>125,937</b>	<b>119,300</b>	<b>27,209</b>	<b>26</b>	<b>272,472</b>
	<b>Girls</b>	<b>130,560</b>	<b>105,351</b>	<b>17,349</b>	<b>17</b>	<b>253,277</b>
	<b>Total</b>	<b>256,497</b>	<b>224,651</b>	<b>44,558</b>	<b>43</b>	<b>525,749</b>
All Classes (1-12)	Boys	131,623	182,716	35,737	26	350,102
	Girls	135,642	157,675	23,232	17	316,566
	<b>Total</b>	<b>267,265</b>	<b>340,391</b>	<b>58,969</b>	<b>43</b>	<b>666,668</b>

**5.1- Castewise Enrolment**

Indicator	Primary (1-5)	Upper Primary (6-8)	Secondary (9-10)	Higher Sec. (11-12)	Elementry (1-8)	All (Class 1-12)
<b>All Social Groups</b>	<b>349,008</b>	<b>176,741</b>	<b>90,418</b>	<b>50,501</b>	<b>525,749</b>	<b>666,668</b>
<b>General</b>	117,231	60,368	31,539	20,398	177,599	229,536
<b>Schedule Castes (SC)</b>	74,102	38,988	20,689	9,247	113,090	143,026
<b>Schedule Tribes (ST)</b>	32,773	16,052	7,849	4,264	48,825	60,938
<b>Other Backward Classes (OBC)</b>	124,902	61,333	30,341	16,592	186,235	233,168
<b>Muslim</b>	55,917	24,810	10,475	3,144	80,727	94,346
<b>Nomadic Tribes (NT)</b>	35,677	19,457	9,541	4,128	55,134	68,803
<b>Vimukat Jatis (VJ)</b>	32,005	12,199	5,040	2,987	44,204	52,231
<b>Special Backward Classes (SBC)</b>	3,047	1,758	1,079	828	4,805	6,712
<b>Bouddhist Minority</b>	28,203	15,104	6,469	1,973	43,307	51,749
<b>Parshi Minority</b>	71	23	46	21	94	161
<b>Christan Minority</b>	52	26	22	22	78	122
<b>Sikh Minority</b>	932	532	358	187	1,464	2,009
<b>Jain Minority</b>	283	85	56	51	368	475
<b>B. P. L.</b>	29,178	8,739	2,478	819	37,917	41,214
<b>Children with Special Needs (C.W.S.N.)</b>	2,800	605	195	44	3,405	3,644

## 5.2- Mediumwise Enrolment

Indicator (Number of Mediumwise schools )	Govt. and Local bodies	Pvt. Aided	Pvt. Unaided	Un-recognised	Total
Marathi	260,871	296,274	28,035	0	585,180
English	1,534	674	26,462	43	28,713
Hindi	0	2,027	0	0	2,027
Urdu	4,860	41,414	4,472	0	50,746
Bangali	0	0	0	0	0
Gujrati	0	0	0	0	0
Kannada	0	0	0	0	0
Sindhi	0	0	0	0	0
Tamil	0	0	0	0	0
Telgu	0	2	0	0	2
<b>Total</b>	<b>267,265</b>	<b>340,391</b>	<b>58,969</b>	<b>43</b>	<b>666,668</b>
School size (Distribution of schools by Enrolment)	Govt. and Local bodies	Pvt. Aided	Pvt. Unaided	Un-recognised	Total
Less than 10	96	2	5	0	103
11-20	250	7	5	0	262
21-30	272	23	9	0	304
31-60	475	41	50	1	567
61-150	561	169	128	0	858
More than 150	640	635	123	0	1,398

## 6- Gender Gap in Enrolment (in %)

Indicator	Primary (1-5)	Upper Primary (6-8)	Secondary (9-10)	Higher Secondary (11-12)	Elementry (1-8)	All (Class 1-12)
<b>All Social Groups</b>	<b>3.79</b>	<b>3.38</b>	<b>7.72</b>	<b>14.58</b>	<b>3.65</b>	<b>5.03</b>
General	4.61	2.11	4.98	13.10	3.76	4.76
Schedule Castes (SC)	2.90	2.04	5.01	13.12	2.60	3.63
Schedule Tribes (ST)	3.62	4.17	7.48	15.43	3.80	5.09
Other Backward Classes (OBC)	3.59	5.26	12.47	13.04	5.76	5.36
Muslim	0.80	-2.36	-4.17	-8.97	-0.17	-0.91
Nomadic Tribes (NT)	2.80	6.11	14.37	16.86	3.97	6.18
Vimukat Jatis (VJ)	2.97	7.88	19.25	35.72	4.33	7.56
Special Backward Classes (SBC)	7.19	3.30	-2.32	-2.32	5.76	5.36
Bouddhist Minority	4.55	15.32	5.30	12.01	8.31	8.07
Parshi Minority	-12.68	-4.35	-17.39	33.33	-10.64	-6.83
Christan Minority	-3.85	-7.69	-18.18	18.18	-5.13	-3.28
Sikh Minority	8.58	6.02	7.26	24.06	7.65	9.11
Jain Minority	10.25	10.59	7.14	29.41	10.33	12.00
B. P. L.	4.16	3.58	9.93	16.00	4.03	4.62
Children with Special Needs (C.W.S.N.)	19.79	9.75	30.26	50.00	-5.13	19.05
No. of clusters having gender gap > 10 %	11	25	69	58	12	20
No. of Block having gender gap > 10 %	0	0	5	11	0	0

## 7- Teacher

(Norms as specified in the schedule under section 19 and 23 of the RTE Act)

Indicators	Govt. and Local bodies	Pvt. Aided	Pvt. Unaided	Un-recognised	Total	
Number of Teachers	Male	7,482	7,569	1,256	2	16,309
	Female	2,955	2,286	839	5	6,085
	<b>Total</b>	<b>10,437</b>	<b>9,855</b>	<b>2,095</b>	<b>7</b>	<b>22,394</b>
Percentage of female teachers to total teachers	28.3	23.2	40.0	71.4	27.2	
Schools without a female teacher	<b>Number</b>	<b>1,158</b>	<b>256</b>	<b>83</b>	<b>0</b>	<b>1,497</b>
	%	50.5	29.2	25.9	0.0	42.9

## 7.1- Mediumwise Teacher

Medium	Govt. and Local bodies	Pvt. Aided	Pvt. Unaided	Un-recognised	Total
Marathi	10,235	8,717	1,084	0	20,036
English	52	21	860	7	940
Hindi	0	66	0	0	66
Urdu	150	1,050	151	0	1,351
Bangali	0	0	0	0	0
Gujrati	0	0	0	0	0
Kannada	0	0	0	0	0
Sindhi	0	0	0	0	0
Tamil	0	0	0	0	0
Telgu	0	1	0	0	1
<b>Total</b>	<b>10,437</b>	<b>9,855</b>	<b>2,095</b>	<b>7</b>	<b>22,394</b>

## 7.2- Castewise Teacher

Caste	Govt. and Local bodies	Pvt. Aided	Pvt. Unaided	Un-recognised	Total	
All	10,437	9,855	2,095	7	22,394	
Genral	4,012	4,796	1,183	1	9,992	
SC	1,592	1,409	318	0	3,319	
ST	811	561	53	1	1,426	
OBC	1,742	1,352	233	0	3,327	
VJ	813	695	132	0	1,640	
NT	460	478	60	2	1,000	
SBC	321	107	19	0	447	
NT-B	142	66	27	0	235	
NT-C	189	17	17	0	223	
NT-D	170	20	20	0	210	
Indicators	Govt. and Local bodies	Pvt. Aided	Pvt. Unaided	Un-recognised	Total	
Schools with single teacher	Number	23	2	2	0	27
	%	1.0	0.2	0.6	0.0	0.8
PTR	Local Body-Only	Primary Section	Upper Primary Section	Secondary Section	Elementry Section	All (Class 1-12)
Pupil Teacher Ratio	26	33	24	33	29	30
Indicators	Govt. and Local bodies	Pvt. Aided	Pvt. Unaided	Un-recognised	Total	
Primary schools having PTR more than 30	Number	148	70	20	0	238
	%	6.5	15.2	11.2	0.0	8.2
Upper Primary having PTR more than 35	Number	71	161	25	0	257
	%	6.4	22.9	12.4	0.0	12.7
Trained /Untrained Teacher	Primary Section	Upper Primary Section	Secondary Section	Higher Secondary Section	Elementry Section	All (Class 1-12)
Teacher All	10,723	7,368	2,715	1,588	18,091	22,394
Trained Teacher Number	10,603	7,258	2,650	1,556	17,861	22,067
%	98.9	98.5	97.6	98.0	98.7	98.5
Untrained Teacher All Number	120	110	65	32	230	327
%	1.1	1.5	2.4	2.0	1.3	1.5

## 8-Efficiency indicators

### 8.1 Annual Average Drop-out Rate

Social Groups	Primary			UpperPrimary		
	Boys	Girls	Total	Boys	Girls	Total
<b>All Social Groups</b>	9.47	7.48	8.51	8.07	8.17	8.12
<b>General</b>	11.76	9.98	10.92	6.31	5.76	6.04
Schedule Castes (SC)	9.30	8.91	9.11	10.94	10.35	10.65
Schedule Tribes (ST)	13.00	11.35	12.21	12.63	11.27	11.99
Other Backward Classes (OBC)	7.64	7.05	7.36	5.03	6.55	5.75
Vimukat Jatis (VJ)	21.99	17.89	20.05	30.79	31.93	31.32
Nomadic Tribes (NT)	20.51	18.82	19.70	13.19	13.81	13.48
Special Backward Classes (SBC)	29.49	31.11	30.25	37.16	33.75	35.56
Muslim	19.64	18.53	19.09	16.74	10.70	13.75

### 8.2 Transition Rate

Social Groups	Primary			UpperPrimary		
	Boys	Girls	Total	Boys	Girls	Total
<b>All Social Groups</b>	91.6	92.2	91.9	89.2	87.6	88.4
General	91.0	92.4	91.7	89.7	89.9	89.8
Schedule Castes (SC)	90.9	92.4	91.7	87.3	85.6	86.5
Schedule Tribes (ST)	86.3	89.2	87.7	82.8	83.5	83.2
Other Backward Classes (OBC)	94.2	92.6	93.4	91.8	91.8	89.8
VJ / NT	128.6	126.4	127.6	128.5	144.4	135.5
Special Backward Classes (SBC)	95.1	62.5	78.4	62.9	64.1	63.5
Muslim	80.4	81.6	81.0	68.7	78.4	73.5

### 8.3 Gender Parity Index (GPI)

Social Groups	Primary Section	Upper Primary Section	Secondary Section	Higher Secondary Section	Elementary Section	All (Class 1-12)
<b>All Social Groups</b>	0.93	0.93	0.86	0.75	0.93	0.90
General	0.91	0.96	0.96	0.77	0.93	0.91
Schedule Castes (SC)	0.94	0.96	0.90	0.90	0.95	0.93
Schedule Tribes (ST)	0.93	0.92	0.86	0.73	0.93	0.90
Other Backward Classes (OBC)	0.93	0.90	0.78	0.71	0.92	0.88
Vimukat Jatis (VJ)	0.94	0.85	0.68	0.47	0.92	0.86
Nomadic Tribes (NT)	0.95	0.88	0.75	0.71	0.92	0.88
Special Backward Classes (SBC)	0.87	0.94	1.05	0.77	0.89	0.90
Muslim	0.98	1.05	1.09	1.20	1.00	1.02

### 8.4 Retention Rate

Social Groups	Primary			UpperPrimary		
	Boys	Girls	Total	Boys	Girls	Total
<b>All Social Groups</b>	75.23	78.49	76.80	91.15	91.15	89.46
General	65.27	67.41	66.30	85.62	85.62	81.92
Schedule Castes (SC)	77.13	81.07	79.04	88.05	86.93	87.51
Schedule Tribes (ST)	67.54	70.37	68.91	88.80	84.27	86.63
Other Backward Classes (OBC)	67.54	70.37	68.91	100.15	96.37	98.36
Muslim	73.82	76.59	76.80	76.11	82.04	89.46