



शिक्षणाचा अधिकार

सर्व शिक्षा अभियान
सारे शिक्षक, पुढे जाऊया

District Profile

Based on Unified District Information System for Education (UDISE), 2012-13

District : Nandurbar

1 – Demographic (Source : Census of India,2011)

	Male	Female	Person	Sex Ratio	Child Sex Ratio (0-6 years)
Population	834,866	811,311	1,646,177		
Literacy rate	72.0	53.9	63.0	972	932

2- Number of Schools by Management and Category

Indicator (Number of schools)	Govt. and Local bodies	Pvt. Aided	Pvt. Unaided	Un-recognised	Total
Primary (1-4)	1,188	45	48	2	1,283
Primary with Upper Primary (1-7)	246	36	16	0	298
Pri,Upper,Secondary with Hsecondary (1 to 12)	41	68	24	1	134
Only Upper Primary	0	0	0	0	0
Upper,Secondary with Hsecondary (5 to 12)	3	55	30	0	88
Primary,Upperprimary with Secondary(1 to 10)	23	34	6	0	63
Upperprimary with Secondary(5 to 10)	11	50	31	1	93
Secondary Only (8 to 10)	3	3	6	0	12
Secondary with HSecondary(8 to 12)	1	0	0	0	1
Higher Secondary with college attached (11 to 12)	1	5	1	0	7
Total	1,517	296	162	4	1,979
Having Primary level classes	1,498	183	94	3	1,778
Having Upper Primary level classes	328	246	113	2	689
Having Secondary level classes	82	210	97	2	391
Having HigherSecondary level classes	46	128	55	1	230
Ratio of Primary to Upper Primary schools	State average				1.6
	District				2.6

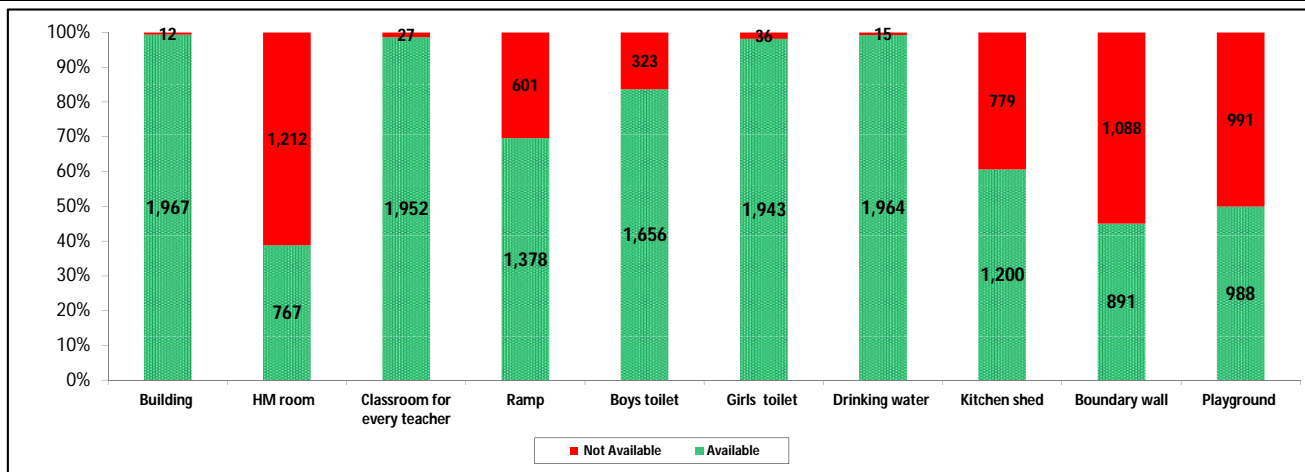
3 - Number of Mediumwise Schools by Management .

Indicator (Number of Mediumwise schools)	Govt. and Local bodies	Pvt. Aided	Pvt. Unaided	Un-recognised	Total
Marathi	1,467	268	114	3	1,852
English	5	9	35	1	50
Hindi	1	0	0	0	1
Urdu	35	14	11	0	60
Bangali	0	0	0	0	0
Gujrati	8	5	2	0	15
Kannada	0	0	0	0	0
Sindhi	1	0	0	0	1
Tamil	0	0	0	0	0
Telgu	0	0	0	0	0
Total	1,517	296	162	4	1,979

4 – Infrastructure

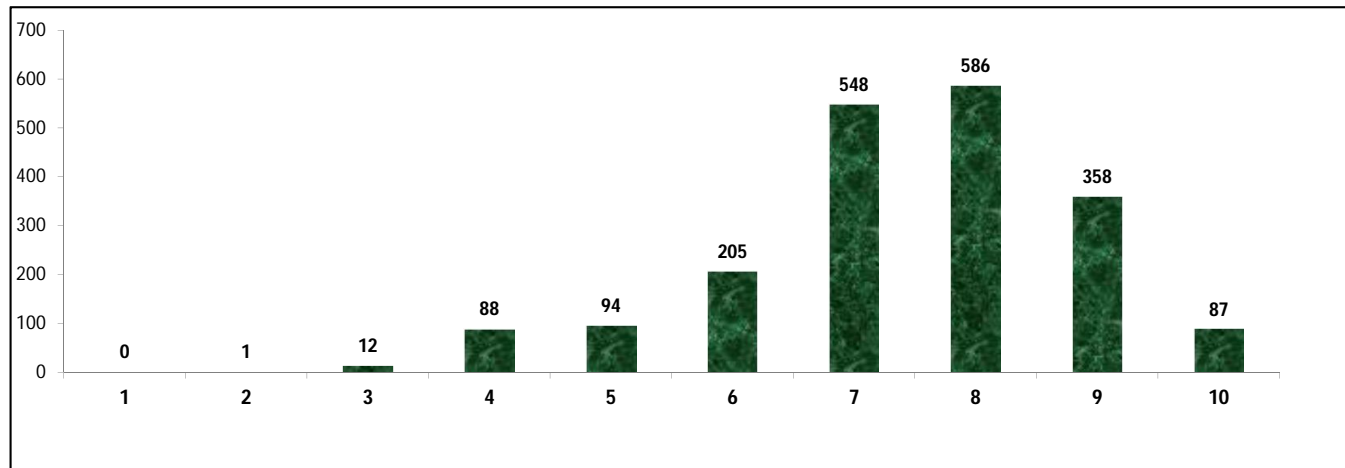
(Norms as specified in the schedule under section 19 of "The right of children to free and compulsory education act, 2009" (RTE Act))

Status of Infrastructure Facilities in Schools (Numbers, All schools)



Indicator : Schools with infrastructure facilities available		Govt. and Local bodies	Pvt. Aided	Pvt. Unaided	Un-recognised	Total
Total Schools		1517	296	162	4	1979
1. Building	Number	1,506	295	162	4	1,967
	%	99.3	99.7	100.0	100.0	99.4
2. Office-cum-store-cum-HM room	Number	425	227	112	3	767
	%	28.0	76.7	69.1	75.0	38.8
3. One classroom for every teacher	Number	1,498	291	160	3	1,952
	%	98.7	98.3	98.8	75.0	98.6
4. Ramp	Number	1,196	128	54	0	1,378
	%	78.8	43.2	33.3	0.0	69.6
5. Separate toilet for boys	Number	1,261	246	146	3	1,656
	%	83.1	83.1	90.1	75.0	83.7
6. Separate toilet for girls	Number	1,487	292	160	4	1,943
	%	98.0	98.6	98.8	100.0	98.2
7. Drinking water facility	Number	1,504	295	161	4	1,964
	%	99.1	99.7	99.4	100.0	99.2
8. Kitchen shed	Number	1,123	70	6	1	1,200
	%	74.0	23.6	3.7	25.0	60.6
9. Boundary wall	Number	642	172	74	3	891
	%	42.3	58.1	45.7	75.0	45.0
10. Playground	Number	588	265	131	4	988
	%	38.8	89.5	80.9	100.0	49.9
Indicators		Govt. and Local bodies	Pvt. Aided	Pvt. Unaided	Un-recognised	Total
Number of classrooms(1 to 8)		4,536	2,185	875	8	7,604
Number of classrooms(9 to 10)		92	441	112	2	647
Number of classrooms(11 to 12)		33	225	0	0	258
Student Classroom Ratio (SCR) Primary		27	UpperPri.	39	Elementry	34
Primary schools having SCR more than 30	Number	384	31	16	0	431
	%	25.3	10.5	9.9	0.0	21.8
Upper Primary. schools having SCR more than 35	Number	22	99	10	0	131
	%	1.5	33.4	6.2	0.0	6.6
Schools fulfilling "10" infrastructure norms for building under RTE	Number	75	12	0	0	87
	%	4.9	4.1	0.0	0.0	4.4

Number of schools by number of infrastructure elements complinace for building under RTE



5- Enrolment

Number of students enrolled in		Govt. and Local bodies	Pvt. Aided	Pvt. Unaided	Un-recognised	Total
Primary Classes (1-5)	Boys	59,807	23,524	8,191	114	91,636
	Girls	58,264	19,286	5,544	66	83,160
	Total	118,071	42,810	13,735	180	174,796
Upper Primary Classes (6-8)	Boys	8,936	28,630	5,313	39	42,918
	Girls	8,550	25,556	4,115	38	38,259
	Total	17,486	54,186	9,428	77	81,177
Secondary Classes (9-10)	Boys	2,913	16,618	3,189	45	22,765
	Girls	2,544	14,161	2,343	28	19,076
	Total	5,457	30,779	5,532	73	41,841
Higher Secondary Classes (11-12)	Boys	1,409	13,280	307	0	14,996
	Girls	811	10,092	376	0	11,279
	Total	2,220	23,372	683	0	26,275
Elementary Classes (1-8)	Boys	68,743	52,154	13,504	153	134,554
	Girls	66,814	44,842	9,659	104	121,419
	Total	135,557	96,996	23,163	257	255,973
All Classes (1-12)	Boys	73,065	82,052	17,000	198	172,315
	Girls	70,169	69,095	12,378	132	151,774
	Total	143,234	151,147	29,378	330	324,089

5.1- Castewise Enrolment

Indicator	Primary (1-5)	Upper Primary (6-8)	Secondary (9-10)	Higher Sec. (11-12)	Elementry (1-8)	All (Class 1-12)
All Social Groups	174,796	81,177	41,841	26,275	255,973	324,089
General	12,895	7,884	4,594	3,412	20,779	28,785
Schedule Castes (SC)	5,544	3,942	2,101	1,216	9,486	12,803
Schedule Tribes (ST)	130,642	53,874	25,324	13,837	184,516	223,677
Other Backward Classes (OBC)	25,715	15,477	9,822	7,810	41,192	58,824
Muslim	8,589	4,831	2,499	1,319	13,420	17,238
Nomadic Tribes (NT)	4,986	2,166	1,118	753	7,152	9,023
Vimukat Jatis (VJ)	1,153	554	232	149	1,707	2,088
Special Backward Classes (SBC)	768	638	324	370	1,406	2,100
Bouddhist Minority	103	85	14	17	188	219
Parshi Minority	1	32	34	0	33	67
Christan Minority	111	26	54	3	137	194
Sikh Minority	9	9	22	0	18	40
Jain Minority	503	34	16	8	537	561
B. P. L.	47,926	11,328	4,415	1,770	59,254	65,439
Children with Special Needs (C.W.S.N.)	1,075	270	164	21	1,345	1,530

5.2- Mediumwise Enrolment

Indicator (Number of Mediumwise schools)	Govt. and Local bodies	Pvt. Aided	Pvt. Unaided	Un-recognised	Total
Marathi	136,616	137,593	18,564	285	293,058
English	1,363	2,858	8,228	45	12,494
Hindi	396	0	0	0	396
Urdu	4,304	6,324	2,509	0	13,137
Bangali	0	0	0	0	0
Gujrati	533	4,372	77	0	4,982
Kannada	0	0	0	0	0
Sindhi	22	0	0	0	22
Tamil	0	0	0	0	0
Telgu	0	0	0	0	0
Total	143,234	151,147	29,378	330	324,089
School size (Distribution of schools by Enrolment)	Govt. and Local bodies	Pvt. Aided	Pvt. Unaided	Un-recognised	Total
Less than 10	24	2	1	0	27
11-20	162	3	5	0	170
21-30	227	2	4	0	233
31-60	419	9	17	2	447
61-150	434	27	57	2	520
More than 150	251	252	78	0	581

6- Gender Gap in Enrolment (in %)

Indicator	Primary (1-5)	Upper Primary (6-8)	Secondary (9-10)	Higher Secondary (11-12)	Elementry (1-8)	All (Class 1-12)
All Social Groups	4.85	5.74	8.82	14.15	5.13	6.34
General	10.17	5.61	10.06	5.22	8.44	8.31
Schedule Castes (SC)	5.30	4.67	1.38	9.21	5.04	4.83
Schedule Tribes (ST)	3.74	5.36	10.05	16.33	4.22	5.63
Other Backward Classes (OBC)	7.70	7.40	6.64	21.08	-0.14	2.67
Muslim	-3.16	-5.61	-1.56	4.47	-4.04	-3.03
Nomadic Tribes (NT)	4.05	0.74	10.20	21.91	3.05	5.51
Vimukat Jatis (VJ)	5.12	10.11	31.03	47.65	6.74	12.36
Special Backward Classes (SBC)	7.81	-9.72	-6.17	-6.17	-0.14	2.67
Bouddhist Minority	16.50	20.00	42.86	52.94	18.09	22.37
Parshi Minority	100.00	31.25	-5.88	0.00	33.33	13.43
Christan Minority	8.11	7.69	0.00	33.33	8.03	6.19
Sikh Minority	11.11	-33.33	18.18	0.00	-11.11	5.00
Jain Minority	-3.78	-64.71	-12.50	100.00	-7.64	-6.24
B. P. L.	2.77	2.97	13.16	24.18	2.80	4.08
Children with Special Needs (C.W.S.N.)	23.72	14.07	15.85	23.81	8.03	21.18
No. of clusters having gender gap > 10 %	11	24	45	23	10	15
No. of Block having gender gap > 10 %	0	0	1	4	0	0

7- Teacher

(Norms as specified in the schedule under section 19 and 23 of the RTE Act)

Indicators	Govt. and Local bodies	Pvt. Aided	Pvt. Unaided	Un-recognised	Total
Number of Teachers	Male	3,851	2,707	633	7,203
	Female	1,466	900	335	2,705
	Total	5,317	3,607	968	9,908
Percentage of female teachers to total teachers	27.6	25.0	34.6	25.0	27.3
Schools without a female teacher	Number	754	44	34	832
	%	49.7	14.9	21.0	42.0

7.1- Mediumwise Teacher

Medium	Govt. and Local bodies	Pvt. Aided	Pvt. Unaided	Un-recognised	Total
Marathi	5,064	3,272	627	16	8,979
English	45	68	262	0	375
Hindi	24	0	0	0	24
Urdu	157	172	73	0	402
Bangali	0	0	0	0	0
Gujrati	26	95	6	0	127
Kannada	0	0	0	0	0
Sindhi	1	0	0	0	1
Tamil	0	0	0	0	0
Telgu	0	0	0	0	0
Total	5,317	3,607	968	16	9,908

7.2- Castewise Teacher

Caste	Govt. and Local bodies	Pvt. Aided	Pvt. Unaided	Un-recognised	Total	
All	5,317	3,607	968	16	9,908	
Genral	1,216	875	231	0	2,322	
SC	537	369	68	3	977	
ST	1,508	660	193	7	2,368	
OBC	1,201	1,338	358	4	2,901	
VJ	562	250	73	1	886	
NT	156	72	19	1	248	
SBC	123	42	17	0	182	
NT-B	0	0	0	0	0	
NT-C	0	0	0	0	0	
NT-D	0	0	0	0	0	
Indicators	Govt. and Local bodies	Pvt. Aided	Pvt. Unaided	Un-recognised	Total	
Schools with single teacher	Number	9	0	0	9	
	%	0.6	0.0	0.0	0.5	
PTR	Local Body-Only	Primary Section	Upper Primary Section	Secondary Section	Elementry Section	All (Class 1-12)
Pupil Teacher Ratio	25	31	26	67	29	33
Indicators	Govt. and Local bodies	Pvt. Aided	Pvt. Unaided	Un-recognised	Total	
Primary schools having PTR more than 30	Number	306	29	15	1	351
	%	20.4	15.8	16.0	33.3	19.7
Upper Primary having PTR more than 35	Number	40	74	12	0	126
	%	12.2	30.1	10.6	0.0	18.3
Trained /Untrained Teacher	Primary Section	Upper Primary Section	Secondary Section	Higher Secondary Section	Elementry Section	All (Class 1-12)
Teacher All	5,617	3,157	623	511	8,774	9,908
Trained Teacher Number	5,579	3,148	618	511	8,727	9,856
%	99.3	99.7	99.2	100.0	99.5	99.5
Untrained Teacher All Number	38	9	5	0	47	52
%	0.7	0.3	0.8	0.0	0.5	0.5

8-Efficiency indicators

8.1 Annual Average Drop-out Rate

Social Groups	Primary			UpperPrimary		
	Boys	Girls	Total	Boys	Girls	Total
All Social Groups	5.49	4.52	5.03	2.05	1.05	1.58
General	9.07	14.91	11.81	8.20	-4.91	2.45
Schedule Castes (SC)	-9.91	-4.56	-7.34	-6.07	-10.46	-8.12
Schedule Tribes (ST)	7.74	6.20	7.00	7.69	7.86	7.77
Other Backward Classes (OBC)	-14.23	-16.99	-15.49	-33.06	-31.73	-32.44
Vimukat Jatis (VJ)	-6.77	-17.85	-11.89	4.69	0.00	2.64
Nomadic Tribes (NT)	18.98	15.09	17.16	25.73	13.79	20.25
Special Backward Classes (SBC)	16.42	25.46	20.82	40.62	24.89	32.91
Muslim	16.80	9.24	13.08	-3.12	-1.03	-2.01

8.2 Transition Rate

Social Groups	Primary			UpperPrimary		
	Boys	Girls	Total	Boys	Girls	Total
All Social Groups	93.1	92.7	92.9	95.5	96.7	96.1
General	87.6	84.7	86.2	93.5	106.5	99.1
Schedule Castes (SC)	112.9	101.5	107.2	94.7	108.1	101.1
Schedule Tribes (ST)	89.2	88.6	88.9	87.5	87.2	87.4
Other Backward Classes (OBC)	113.7	121.6	117.3	138.0	138.0	135.7
VJ / NT	119.0	110.1	114.8	137.3	106.2	120.9
Special Backward Classes (SBC)	105.2	111.1	108.1	48.9	69.2	57.9
Muslim	76.1	85.4	80.8	100.4	98.5	99.4

8.3 Gender Parity Index (GPI)

Social Groups	Primary Section	Upper Primary Section	Secondary Section	Higher Secondary Section	Elementry Section	All (Class 1-12)
All Social Groups	0.91	0.89	0.84	0.75	0.90	0.88
General	0.82	0.89	0.89	0.90	0.84	0.85
Schedule Castes (SC)	0.90	0.91	0.97	0.97	0.90	0.91
Schedule Tribes (ST)	0.93	0.90	0.82	0.72	0.92	0.89
Other Backward Classes (OBC)	0.86	0.86	0.88	0.74	0.86	0.84
Vimukat Jatis (VJ)	0.90	0.82	0.53	0.35	0.87	0.78
Nomadic Tribes (NT)	0.92	0.99	0.81	0.64	0.94	0.90
Special Backward Classes (SBC)	0.86	1.22	1.13	0.65	1.00	0.95
Muslim	1.07	1.12	1.03	0.91	1.08	1.06

8.4 Retention Rate

Social Groups	Primary			UpperPrimary		
	Boys	Girls	Total	Boys	Girls	Total
All Social Groups	76.90	78.06	77.45	94.55	94.55	94.69
General	76.56	85.72	80.68	87.78	87.78	88.16
Schedule Castes (SC)	103.62	101.09	102.42	103.06	109.69	106.35
Schedule Tribes (ST)	69.97	70.96	70.44	89.75	88.43	89.13
Other Backward Classes (OBC)	69.97	70.96	70.44	117.29	124.44	120.53
Muslim	73.75	94.52	77.45	90.75	125.38	94.69