



शिक्षणाचा अधिकार

सर्व शिक्षा अभियान
सारे शिक्षक, पुढे जाऊया

District Profile

Based on Unified District Information System for Education (UDISE), 2012-13

District : Nashik

1 – Demographic (Source : Census of India,2011)

	Male	Female	Person	Sex Ratio	Child Sex Ratio (0-6 years)
Population	3,164,261	2,944,791	6,109,052		
Literacy rate	88.0	73.4	81.0	931	882

2- Number of Schools by Management and Category

Indicator (Number of schools)	Govt. and Local bodies	Pvt. Aided	Pvt. Unaided	Un-recognised	Total
Primary (1-4)	2,713	102	123	6	2,944
Primary with Upper Primary (1-7)	928	165	126	1	1,220
Pri,Upper,Secondary with Hsecondary (1 to 12)	17	3	9	0	29
Only Upper Primary	0	0	0	0	0
Upper,Secondary with Hsecondary (5 to 12)	2	172	6	0	180
Primary,Upperprimary with Secondary(1 to 10)	59	14	35	1	109
Upperprimary with Secondary(5 to 10)	11	300	29	1	341
Secondary Only (8 to 10)	8	180	156	2	346
Secondary with HSecondary(8 to 12)	0	23	6	0	29
Higher Secondary with college attached (11 to 12)	0	25	11	0	36
Total	3,738	984	501	11	5,234
Having Primary level classes	3,717	284	293	8	4,302
Having Upper Primary level classes	1,025	857	367	5	2,254
Having Secondary level classes	97	692	241	4	1,034
Having HigherSecondary level classes	19	223	32	0	274
Ratio of Primary to Upper Primary schools	State average				1.6
	District				1.9

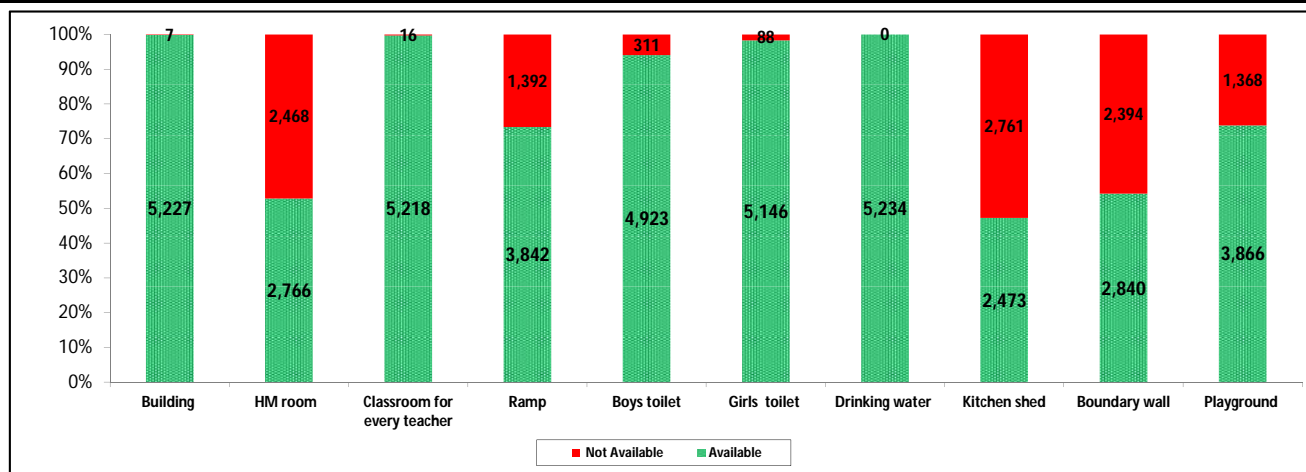
3 - Number of Mediumwise Schools by Management .

Indicator (Number of Mediumwise schools)	Govt. and Local bodies	Pvt. Aided	Pvt. Unaided	Un-recognised	Total
Marathi	3,556	900	218	5	4,679
English	12	7	251	6	276
Hindi	5	4	1	0	10
Urdu	165	71	31	0	267
Bangali	0	0	0	0	0
Gujrati	0	2	0	0	2
Kannada	0	0	0	0	0
Sindhi	0	0	0	0	0
Tamil	0	0	0	0	0
Telgu	0	0	0	0	0
Total	3,738	984	501	11	5,234

4 – Infrastructure

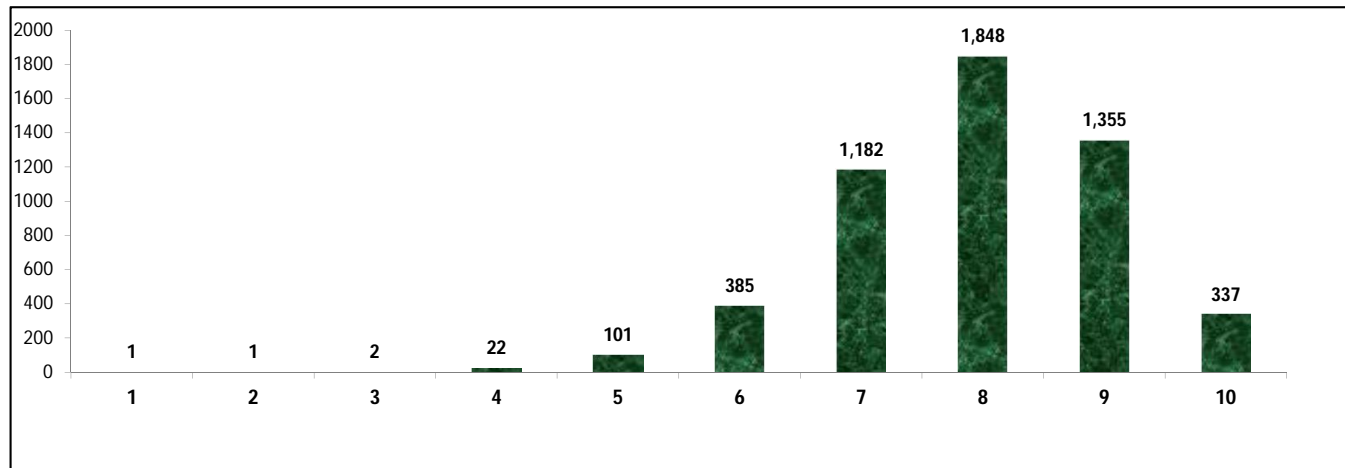
(Norms as specified in the schedule under section 19 of "The right of children to free and compulsory education act, 2009" (RTE Act))

Status of Infrastructure Facilities in Schools (Numbers, All schools)



Indicator : Schools with infrastructure facilities available		Govt. and Local bodies	Pvt. Aided	Pvt. Unaided	Un-recognised	Total
Total Schools		3738	984	501	11	5234
1. Building	Number	3,733	984	499	11	5,227
	%	99.9	100.0	99.6	100.0	99.9
2. Office-cum-store-cum-HM room	Number	1,511	829	415	11	2,766
	%	40.4	84.2	82.8	100.0	52.8
3. One classroom for every teacher	Number	3,722	984	501	11	5,218
	%	99.6	100.0	100.0	100.0	99.7
4. Ramp	Number	3,538	206	98	0	3,842
	%	94.6	20.9	19.6	0.0	73.4
5. Separate toilet for boys	Number	3,486	934	494	9	4,923
	%	93.3	94.9	98.6	81.8	94.1
6. Separate toilet for girls	Number	3,696	950	491	9	5,146
	%	98.9	96.5	98.0	81.8	98.3
7. Drinking water facility	Number	3,738	984	501	11	5,234
	%	100.0	100.0	100.0	100.0	100.0
8. Kitchen shed	Number	2,210	256	7	0	2,473
	%	59.1	26.0	1.4	0.0	47.2
9. Boundary wall	Number	1,800	668	364	8	2,840
	%	48.2	67.9	72.7	72.7	54.3
10. Playground	Number	2,514	896	445	11	3,866
	%	67.3	91.1	88.8	100.0	73.9
Indicators		Govt. and Local bodies	Pvt. Aided	Pvt. Unaided	Un-recognised	Total
Number of classrooms(1 to 8)		14,374	6,719	3,176	51	24,320
Number of classrooms(9 to 10)		215	2,405	664	10	3,294
Number of classrooms(11 to 12)		58	1,099	0	0	1,157
Student Classroom Ratio (SCR) Primary		28	UpperPri.	44	Elementry	38
Primary schools having SCR more than 30	Number	498	94	48	2	642
	%	13.3	9.6	9.6	18.2	12.3
Upper Primary. schools having SCR more than 35	Number	61	586	101	1	749
	%	1.6	59.6	20.2	9.1	14.3
Schools fulfilling "10" infrastructure norms for building under RTE	Number	296	38	3	0	337
	%	7.9	3.9	0.6	0.0	6.4

Number of schools by number of infrastructure elements complinace for building under RTE



5- Enrolment

Number of students enrolled in		Govt. and Local bodies	Pvt. Aided	Pvt. Unaided	Un-recognised	Total
Primary Classes (1-5)	Boys	166,510	95,066	54,034	658	316,268
	Girls	161,494	82,030	37,852	444	281,820
	Total	328,004	177,096	91,886	1,102	598,088
Upper Primary Classes (6-8)	Boys	35,947	120,798	21,046	121	177,912
	Girls	36,715	102,862	14,653	96	154,326
	Total	72,662	223,660	35,699	217	332,238
Secondary Classes (9-10)	Boys	5,044	81,871	13,204	125	100,244
	Girls	4,786	69,384	9,982	88	84,240
	Total	9,830	151,255	23,186	213	184,484
Higher Secondary Classes (11-12)	Boys	2,177	52,370	2,567	0	57,114
	Girls	1,894	47,313	1,624	0	50,831
	Total	4,071	99,683	4,191	0	107,945
Elementary Classes (1-8)	Boys	202,457	215,864	75,080	779	494,180
	Girls	198,209	184,892	52,505	540	436,146
	Total	400,666	400,756	127,585	1,319	930,326
All Classes (1-12)	Boys	209,678	350,105	90,851	904	651,538
	Girls	204,889	301,589	64,111	628	571,217
	Total	414,567	651,694	154,962	1,532	1,222,755

5.1- Castewise Enrolment

Indicator	Primary (1-5)	Upper Primary (6-8)	Secondary (9-10)	Higher Sec. (11-12)	Elementry (1-8)	All (Class 1-12)
All Social Groups	598,088	332,238	184,484	107,945	930,326	1,222,755
General	165,315	105,742	65,057	43,245	271,057	379,359
Schedule Castes (SC)	56,824	34,628	20,157	10,307	91,452	121,916
Schedule Tribes (ST)	192,788	91,095	40,769	20,335	283,883	344,987
Other Backward Classes (OBC)	183,161	100,773	58,501	34,058	283,934	376,493
Muslim	79,682	40,141	19,289	8,936	119,823	148,048
Nomadic Tribes (NT)	46,571	25,921	14,927	8,171	72,492	95,590
Vimukat Jatis (VJ)	7,889	5,830	3,102	1,607	13,719	18,428
Special Backward Classes (SBC)	2,035	1,785	1,118	652	3,820	5,590
Bouddhist Minority	3,983	1,750	817	915	5,733	7,465
Parshi Minority	103	50	36	71	153	260
Christan Minority	1,140	716	402	224	1,856	2,482
Sikh Minority	392	292	153	182	684	1,019
Jain Minority	1,587	913	575	481	2,500	3,556
B. P. L.	118,346	36,816	12,296	4,709	155,162	172,167
Children with Special Needs (C.W.S.N.)	6,772	2,535	920	1,934	9,307	12,161

5.2- Mediumwise Enrolment

Indicator (Number of Mediumwise schools)	Govt. and Local bodies	Pvt. Aided	Pvt. Unaided	Un-recognised	Total
Marathi	374,704	567,750	45,759	843	989,056
English	5,572	9,908	98,844	689	115,013
Hindi	1,368	2,785	281	0	4,434
Urdu	32,923	70,421	10,078	0	113,422
Bangali	0	0	0	0	0
Gujrati	0	830	0	0	830
Kannada	0	0	0	0	0
Sindhi	0	0	0	0	0
Tamil	0	0	0	0	0
Telgu	0	0	0	0	0
Total	414,567	651,694	154,962	1,532	1,222,755
School size (Distribution of schools by Enrolment)	Govt. and Local bodies	Pvt. Aided	Pvt. Unaided	Un-recognised	Total
Less than 10	102	1	2	0	105
11-20	399	1	4	0	404
21-30	559	3	14	0	576
31-60	956	3	38	1	998
61-150	720	136	173	7	1,036
More than 150	1,002	840	270	3	2,115

6- Gender Gap in Enrolment (in %)

Indicator	Primary (1-5)	Upper Primary (6-8)	Secondary (9-10)	Higher Secondary (11-12)	Elementry (1-8)	All (Class 1-12)
All Social Groups	5.76	7.10	8.68	5.82	6.24	6.57
General	6.86	5.69	4.65	1.65	6.40	5.56
Schedule Castes (SC)	4.01	4.47	8.16	4.69	4.18	4.88
Schedule Tribes (ST)	3.27	6.70	11.09	18.59	4.37	6.00
Other Backward Classes (OBC)	7.93	9.85	11.65	9.20	15.18	14.45
Muslim	1.54	-0.80	-1.50	-3.85	0.75	0.18
Nomadic Tribes (NT)	6.24	8.65	10.55	7.18	7.10	7.65
Vimukat Jatis (VJ)	7.87	11.08	11.15	14.87	9.24	10.05
Special Backward Classes (SBC)	10.86	20.11	15.03	15.03	15.18	14.45
Bouddhist Minority	9.77	15.54	17.99	12.57	11.53	12.36
Parshi Minority	-28.16	4.00	38.89	7.04	-17.65	-3.08
Christan Minority	5.79	1.96	-3.48	-5.36	4.31	2.18
Sikh Minority	15.82	7.53	9.80	-2.20	12.28	9.32
Jain Minority	5.36	0.55	6.43	-5.61	3.60	2.81
B. P. L.	2.01	4.76	10.96	9.20	2.67	3.44
Children with Special Needs (C.W.S.N.)	17.69	15.90	16.09	0.00	4.31	14.38
No. of clusters having gender gap > 10 %	41	82	126	82	49	55
No. of Block having gender gap > 10 %	0	1	9	7	0	0

7- Teacher

(Norms as specified in the schedule under section 19 and 23 of the RTE Act)

Indicators	Govt. and Local bodies	Pvt. Aided	Pvt. Unaided	Un-recognised	Total
Number of Teachers	Male	8,654	9,013	1,254	18,943
	Female	5,477	5,063	2,842	13,424
	Total	14,131	14,076	4,096	32,367
Percentage of female teachers to total teachers	38.8	36.0	69.4	65.6	41.5
Schools without a female teacher	Number	1,632	155	47	1,835
	%	43.7	15.8	9.4	35.1

7.1- Mediumwise Teacher

Medium	Govt. and Local bodies	Pvt. Aided	Pvt. Unaided	Un-recognised	Total
Marathi	13,121	12,744	1,274	33	27,172
English	137	205	2,645	31	3,018
Hindi	32	60	4	0	96
Urdu	841	1,040	173	0	2,054
Bangali	0	0	0	0	0
Gujrati	0	27	0	0	27
Kannada	0	0	0	0	0
Sindhi	0	0	0	0	0
Tamil	0	0	0	0	0
Telgu	0	0	0	0	0
Total	14,131	14,076	4,096	64	32,367

7.2- Castewise Teacher

Caste	Govt. and Local bodies	Pvt. Aided	Pvt. Unaided	Un-recognised	Total	
All	14,131	14,076	4,096	64	32,367	
Genral	5,073	6,760	2,401	29	14,263	
SC	1,227	1,179	257	10	2,673	
ST	3,020	1,376	191	3	4,590	
OBC	2,687	2,893	822	7	6,409	
VJ	1,084	939	184	4	2,211	
NT	567	482	58	6	1,113	
SBC	232	111	31	1	375	
NT-B	0	0	0	0	0	
NT-C	0	0	0	0	0	
NT-D	0	0	0	0	0	
Indicators	Govt. and Local bodies	Pvt. Aided	Pvt. Unaided	Un-recognised	Total	
Schools with single teacher	Number	199	2	3	0	204
	%	5.3	0.2	0.6	0.0	3.9
PTR	Local Body-Only	Primary Section	Upper Primary Section	Secondary Section	Elementry Section	All (Class 1-12)
Pupil Teacher Ratio	28	66	19	46	34	38
Indicators	Govt. and Local bodies	Pvt. Aided	Pvt. Unaided	Un-recognised	Total	
Primary schools having PTR more than 30	Number	638	94	56	3	791
	%	17.2	33.1	19.1	37.5	18.4
Upper Primary having PTR more than 35	Number	12	104	8	0	124
	%	1.2	12.1	2.2	0.0	5.5
Trained /Untrained Teacher	Primary Section	Upper Primary Section	Secondary Section	Higher Secondary Section	Elementry Section	All (Class 1-12)
Teacher All	9,089	17,882	4,019	1,377	26,971	32,367
Trained Teacher Number	9,016	17,576	3,915	1,345	26,592	31,852
%	99.2	98.3	97.4	97.7	98.6	98.4
Untrained Teacher All Number	73	306	104	32	379	515
%	0.8	1.7	2.6	2.3	1.4	1.6

8-Efficiency indicators

8.1 Annual Average Drop-out Rate

Social Groups	Primary			UpperPrimary		
	Boys	Girls	Total	Boys	Girls	Total
All Social Groups	2.09	2.27	2.17	3.28	3.62	3.44
General	-1.27	-1.90	-1.57	0.40	-2.65	-1.02
Schedule Castes (SC)	3.00	3.75	3.36	2.08	2.31	2.19
Schedule Tribes (ST)	4.70	4.96	4.82	5.90	7.19	6.50
Other Backward Classes (OBC)	2.09	2.47	2.26	4.12	6.96	5.42
Vimukat Jatis (VJ)	-25.75	-28.63	-27.06	-22.33	-21.75	-22.07
Nomadic Tribes (NT)	-15.99	-18.70	-17.25	-13.98	-14.62	-14.27
Special Backward Classes (SBC)	79.71	79.26	79.51	63.99	71.86	67.61
Muslim	-0.67	-2.75	-1.68	6.41	1.41	3.96

8.2 Transition Rate

Social Groups	Primary			UpperPrimary		
	Boys	Girls	Total	Boys	Girls	Total
All Social Groups	96.8	96.3	96.6	94.1	92.2	93.2
General	104.2	106.4	105.3	100.0	102.0	100.9
Schedule Castes (SC)	97.6	96.1	96.9	97.0	94.9	95.9
Schedule Tribes (ST)	92.8	91.4	92.1	88.6	85.8	87.3
Other Backward Classes (OBC)	94.0	92.8	93.4	92.3	92.3	89.9
VJ / NT	85.7	84.4	85.1	89.2	90.8	90.0
Special Backward Classes (SBC)	29.8	23.0	26.8	46.9	33.7	40.9
Muslim	98.4	101.1	99.7	86.4	87.0	86.7

8.3 Gender Parity Index (GPI)

Social Groups	Primary Section	Upper Primary Section	Secondary Section	Higher Secondary Section	Elementry Section	All (Class 1-12)
All Social Groups	0.89	0.87	0.84	0.89	0.88	0.88
General	0.87	0.89	0.89	0.97	0.88	0.89
Schedule Castes (SC)	0.92	0.91	0.85	0.85	0.92	0.91
Schedule Tribes (ST)	0.94	0.87	0.80	0.69	0.92	0.89
Other Backward Classes (OBC)	0.85	0.82	0.79	0.93	0.84	0.84
Vimukat Jatis (VJ)	0.85	0.80	0.80	0.74	0.83	0.82
Nomadic Tribes (NT)	0.88	0.84	0.81	0.87	0.87	0.86
Special Backward Classes (SBC)	0.80	0.67	0.74	0.83	0.74	0.75
Muslim	0.97	1.02	1.03	1.08	0.99	1.00

8.4 Retention Rate

Social Groups	Primary			UpperPrimary		
	Boys	Girls	Total	Boys	Girls	Total
All Social Groups	93.24	91.34	92.34	94.92	94.92	94.03
General	102.98	103.01	102.99	99.64	99.64	101.15
Schedule Castes (SC)	95.93	92.54	94.30	94.45	93.84	94.16
Schedule Tribes (ST)	81.62	79.38	80.54	88.30	84.65	86.60
Other Backward Classes (OBC)	81.62	79.38	80.54	96.24	91.71	94.15
Muslim	97.06	99.72	92.34	88.68	86.29	94.03