



शिक्षणाचा अधिकार

सर्व शिक्षा अभियान
सारे शिक्षा, पुढे जाऊया

District Profile

Based on Unified District Information System for Education (UDISE), 2012-13

District : Parbhani

1 – Demographic (Source : Census of India,2011)

	Male	Female	Person	Sex Ratio	Child Sex Ratio (0-6 years)
Population	946,185	889,797	1,835,982		
Literacy rate	85.7	64.3	75.2	940	866

2- Number of Schools by Management and Category

Indicator (Number of schools)	Govt. and Local bodies	Pvt. Aided	Pvt. Unaided	Un-recognised	Total
Primary (1-4)	484	40	118	0	642
Primary with Upper Primary (1-7)	606	104	94	0	804
Pri,Upper,Secondary with Hsecondary (1 to 12)	0	2	5	0	7
Only Upper Primary	6	1	0	0	7
Upper,Secondary with Hsecondary (5 to 12)	6	52	15	0	73
Primary,Upperprimary with Secondary(1 to 10)	1	3	2	0	6
Upperprimary with Secondary(5 to 10)	47	89	31	0	167
Secondary Only (8 to 10)	1	51	67	1	120
Secondary with HSecondary(8 to 12)	0	9	8	0	17
Higher Secondary with college attached (11 to 12)	0	11	109	0	120
Total	1,151	362	449	1	1,963
Having Primary level classes	1,091	149	219	0	1,459
Having Upper Primary level classes	667	311	222	1	1,201
Having Secondary level classes	55	206	128	1	390
Having HigherSecondary level classes	6	74	137	0	217
Ratio of Primary to Upper Primary schools	State average				1.6
	District				1.2

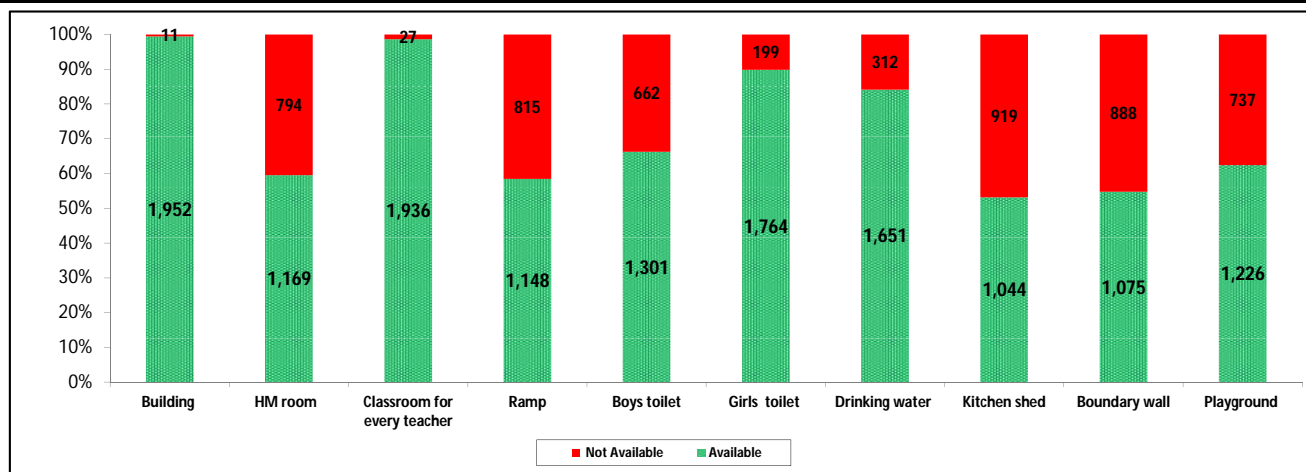
3 - Number of Mediumwise Schools by Management .

Indicator (Number of Mediumwise schools)	Govt. and Local bodies	Pvt. Aided	Pvt. Unaided	Un-recognised	Total
Marathi	1,127	311	270	1	1,709
English	8	0	92	0	100
Hindi	1	0	0	0	1
Urdu	15	51	87	0	153
Bangali	0	0	0	0	0
Gujrati	0	0	0	0	0
Kannada	0	0	0	0	0
Sindhi	0	0	0	0	0
Tamil	0	0	0	0	0
Telgu	0	0	0	0	0
Total	1,151	362	449	1	1,963

4 – Infrastructure

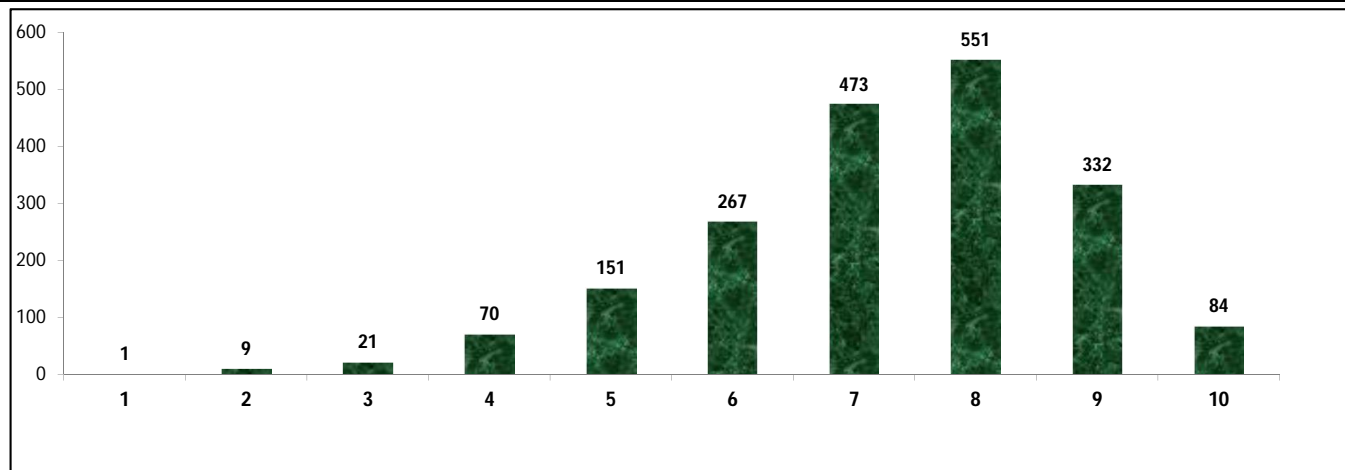
(Norms as specified in the schedule under section 19 of "The right of children to free and compulsory education act, 2009"(RTE Act))

Status of Infrastructure Facilities in Schools (Numbers, All schools)



Indicator : Schools with infrastructure facilities available		Govt. and Local bodies	Pvt. Aided	Pvt. Unaided	Un-recognised	Total
Total Schools		1151	362	449	1	1963
1. Building	Number	1,141	362	448	1	1,952
	%	99.1	100.0	99.8	100.0	99.4
2. Office-cum-store-cum-HM room	Number	430	327	411	1	1,169
	%	37.4	90.3	91.5	100.0	59.6
3. One classroom for every teacher	Number	1,135	362	438	1	1,936
	%	98.6	100.0	97.6	100.0	98.6
4. Ramp	Number	982	85	81	0	1,148
	%	85.3	23.5	18.0	0.0	58.5
5. Separate toilet for boys	Number	630	285	385	1	1,301
	%	54.7	78.7	85.7	100.0	66.3
6. Separate toilet for girls	Number	986	344	433	1	1,764
	%	85.7	95.0	96.4	100.0	89.9
7. Drinking water facility	Number	848	359	443	1	1,651
	%	73.7	99.2	98.7	100.0	84.1
8. Kitchen shed	Number	893	136	15	0	1,044
	%	77.6	37.6	3.3	0.0	53.2
9. Boundary wall	Number	440	268	367	0	1,075
	%	38.2	74.0	81.7	0.0	54.8
10. Playground	Number	517	330	378	1	1,226
	%	44.9	91.2	84.2	100.0	62.5
Indicators		Govt. and Local bodies	Pvt. Aided	Pvt. Unaided	Un-recognised	Total
Number of classrooms(1 to 8)		5,263	2,818	1,673	1	9,755
Number of classrooms(9 to 10)		106	550	218	1	875
Number of classrooms(11 to 12)		2	287	0	0	289
Student Classroom Ratio (SCR) Primary		24	UpperPri.	34	Elementry	32
Primary schools having SCR more than 30	Number	79	25	22	0	126
	%	6.9	6.9	4.9	0.0	6.4
Upper Primary. schools having SCR more than 35	Number	20	122	21	0	163
	%	1.7	33.7	4.7	0.0	8.3
Schools fulfilling "10" infrastructure norms for building under RTE	Number	59	23	2	0	84
	%	5.1	6.4	0.4	0.0	4.3

Number of schools by number of infrastructure elements complinace for building under RTE



5- Enrolment

Number of students enrolled in		Govt. and Local bodies	Pvt. Aided	Pvt. Unaided	Un-recognised	Total
Primary Classes (1-5)	Boys	58,098	33,127	16,478	0	107,703
	Girls	58,237	27,003	11,665	0	96,905
	Total	116,335	60,130	28,143	0	204,608
Upper Primary Classes (6-8)	Boys	15,609	33,277	7,025	11	55,922
	Girls	18,113	26,721	4,259	14	49,107
	Total	33,722	59,998	11,284	25	105,029
Secondary Classes (9-10)	Boys	2,092	22,512	5,594	6	30,204
	Girls	2,125	17,535	3,253	13	22,926
	Total	4,217	40,047	8,847	19	53,130
Higher Secondary Classes (11-12)	Boys	55	10,658	8,625	0	19,338
	Girls	67	7,932	4,848	0	12,847
	Total	122	18,590	13,473	0	32,185
Elementary Classes (1-8)	Boys	73,707	66,404	23,503	11	163,625
	Girls	76,350	53,724	15,924	14	146,012
	Total	150,057	120,128	39,427	25	309,637
All Classes (1-12)	Boys	75,854	99,574	37,722	17	213,167
	Girls	78,542	79,191	24,025	27	181,785
	Total	154,396	178,765	61,747	44	394,952

5.1- Castewise Enrolment

Indicator	Primary (1-5)	Upper Primary (6-8)	Secondary (9-10)	Higher Sec. (11-12)	Elementry (1-8)	All (Class 1-12)
All Social Groups	204,608	105,029	53,130	32,185	309,637	394,952
General	91,431	47,989	24,874	14,753	139,420	179,047
Schedule Castes (SC)	33,596	17,136	8,277	5,105	50,732	64,114
Schedule Tribes (ST)	6,530	3,538	1,794	955	10,068	12,817
Other Backward Classes (OBC)	73,051	36,366	18,185	11,372	109,417	138,974
Muslim	42,492	17,411	7,542	2,881	59,903	70,326
Nomadic Tribes (NT)	26,371	15,185	7,891	4,188	41,556	53,635
Vimukat Jatis (VJ)	15,167	6,438	2,727	1,353	21,605	25,685
Special Backward Classes (SBC)	2,090	1,008	485	341	3,098	3,924
Bouddhist Minority	16,147	8,294	4,019	2,129	24,441	30,589
Parshi Minority	129	112	104	33	241	378
Christan Minority	17	5	5	1	22	28
Sikh Minority	137	62	15	0	199	214
Jain Minority	221	95	39	73	316	428
B. P. L.	20,295	5,999	1,233	253	26,294	27,780
Children with Special Needs (C.W.S.N.)	4,421	1,466	397	72	5,887	6,356

5.2- Mediumwise Enrolment

Indicator (Number of Mediumwise schools)	Govt. and Local bodies	Pvt. Aided	Pvt. Unaided	Un-recognised	Total
Marathi	150,693	153,789	40,566	44	345,092
English	352	0	9,796	0	10,148
Hindi	366	0	0	0	366
Urdu	2,985	24,976	11,385	0	39,346
Bangali	0	0	0	0	0
Gujrati	0	0	0	0	0
Kannada	0	0	0	0	0
Sindhi	0	0	0	0	0
Tamil	0	0	0	0	0
Telgu	0	0	0	0	0
Total	154,396	178,765	61,747	44	394,952
School size (Distribution of schools by Enrolment)	Govt. and Local bodies	Pvt. Aided	Pvt. Unaided	Un-recognised	Total
Less than 10	24	2	8	0	34
11-20	85	1	12	0	98
21-30	116	12	29	0	157
31-60	211	5	82	1	299
61-150	288	51	186	0	525
More than 150	427	291	132	0	850

6- Gender Gap in Enrolment (in %)

Indicator	Primary (1-5)	Upper Primary (6-8)	Secondary (9-10)	Higher Secondary (11-12)	Elementry (1-8)	All (Class 1-12)
All Social Groups	5.28	6.49	13.70	20.17	5.69	7.95
General	5.90	6.17	10.99	15.95	5.99	7.51
Schedule Castes (SC)	3.27	6.35	14.10	18.39	4.31	6.70
Schedule Tribes (ST)	3.77	8.31	15.16	25.86	5.36	8.26
Other Backward Classes (OBC)	5.55	6.79	17.07	20.82	7.42	9.23
Muslim	2.07	3.38	2.23	-2.26	2.45	2.24
Nomadic Tribes (NT)	6.86	7.94	18.41	31.04	7.25	10.75
Vimukat Jatis (VJ)	3.79	7.98	15.95	32.89	5.04	7.67
Special Backward Classes (SBC)	3.73	15.08	12.58	12.58	7.42	9.23
Bouddhist Minority	2.72	4.77	10.87	18.46	3.42	5.44
Parshi Minority	-2.33	7.14	28.85	33.33	2.07	12.17
Christan Minority	17.65	-20.00	20.00	100.00	9.09	14.29
Sikh Minority	8.03	6.45	46.67	0.00	7.54	10.28
Jain Minority	12.22	15.79	28.21	4.11	13.29	13.08
B. P. L.	5.09	5.05	-7.22	20.95	5.08	4.68
Children with Special Needs (C.W.S.N.)	16.26	15.96	15.87	22.22	9.09	16.24
No. of clusters having gender gap > 10 %	6	13	43	38	8	16
No. of Block having gender gap > 10 %	0	1	6	8	1	1

7- Teacher

(Norms as specified in the schedule under section 19 and 23 of the RTE Act)

Indicators	Govt. and Local bodies	Pvt. Aided	Pvt. Unaided	Un-recognised	Total
Number of Teachers	Male	4,237	3,446	1,470	9,154
	Female	1,531	1,098	782	3,414
	Total	5,768	4,544	2,252	12,568
Percentage of female teachers to total teachers	26.5	24.2	34.7	75.0	27.2
Schools without a female teacher	Number	575	123	126	824
	%	50.0	34.0	28.1	42.0

7.1- Mediumwise Teacher

Medium	Govt. and Local bodies	Pvt. Aided	Pvt. Unaided	Un-recognised	Total
Marathi	5,619	3,858	1,397	4	10,878
English	30	0	452	0	482
Hindi	6	0	0	0	6
Urdu	113	686	403	0	1,202
Bangali	0	0	0	0	0
Gujrati	0	0	0	0	0
Kannada	0	0	0	0	0
Sindhi	0	0	0	0	0
Tamil	0	0	0	0	0
Telgu	0	0	0	0	0
Total	5,768	4,544	2,252	4	12,568

7.2- Castewise Teacher

Caste	Govt. and Local bodies	Pvt. Aided	Pvt. Unaided	Un-recognised	Total
All	5,768	4,544	2,252	4	12,568
Genral	2,078	2,129	1,220	0	5,427
SC	716	536	238	0	1,490
ST	404	206	81	0	691
OBC	968	642	219	0	1,829
VJ	983	538	303	0	1,824
NT	328	220	85	1	634
SBC	124	44	28	3	199
NT-B	9	0	1	0	10
NT-C	11	4	4	0	19
NT-D	10	2	2	0	14

Indicators		Govt. and Local bodies	Pvt. Aided	Pvt. Unaided	Un-recognised	Total
Schools with single teacher	Number	8	0	4	0	12
	%	0.7	0.0	0.9	0.0	0.6
PTR	Local Body-Only	Primary Section	Upper Primary Section	Secondary Section	Elementry Section	All (Class 1-12)
Pupil Teacher Ratio	27	35	23	40	30	31

Indicators		Govt. and Local bodies	Pvt. Aided	Pvt. Unaided	Un-recognised	Total
Primary schools having PTR more than 30	Number	80	26	33	0	139
	%	7.3	17.4	15.1	0.0	9.5
Upper Primary having PTR more than 35	Number	36	76	23	0	135
	%	5.4	24.4	10.4	0.0	11.2
Trained /Untrained Teacher	Primary Section	Upper Primary Section	Secondary Section	Higher Secondary Section	Elementry Section	All (Class 1-12)
Teacher All	5,801	4,522	1,316	929	10,323	12,568
Trained Teacher Number	5,714	4,422	1,274	904	10,136	12,314
%	98.5	97.8	96.8	97.3	98.2	98.0
Untrained Teacher All Number	87	100	42	25	187	254
%	1.5	2.2	3.2	2.7	1.8	2.0

8-Efficiency indicators

8.1 Annual Average Drop-out Rate

Social Groups	Primary			UpperPrimary		
	Boys	Girls	Total	Boys	Girls	Total
All Social Groups	5.22	5.47	5.34	5.46	6.82	6.11
General	6.85	6.24	6.56	4.77	6.59	5.63
Schedule Castes (SC)	7.14	7.18	7.16	8.07	11.23	9.58
Schedule Tribes (ST)	14.16	14.50	14.32	12.11	10.88	11.55
Other Backward Classes (OBC)	-0.80	0.27	-0.29	1.43	2.75	2.05
Vimukat Jatis (VJ)	15.05	12.71	13.93	15.30	17.31	16.24
Nomadic Tribes (NT)	2.01	4.44	3.16	-1.93	6.43	2.10
Special Backward Classes (SBC)	-50.09	-75.66	-61.59	-21.59	2.51	-10.04
Muslim	8.02	6.53	7.29	8.01	8.51	8.25

8.2 Transition Rate

Social Groups	Primary			UpperPrimary		
	Boys	Girls	Total	Boys	Girls	Total
All Social Groups	96.5	95.7	96.1	92.8	87.4	90.2
General	93.8	93.1	93.5	91.6	87.4	89.6
Schedule Castes (SC)	92.6	93.9	93.3	88.5	80.5	84.7
Schedule Tribes (ST)	97.1	87.5	92.5	94.2	89.1	91.8
Other Backward Classes (OBC)	101.9	100.7	101.3	96.3	96.3	93.7
VJ / NT	102.4	103.9	103.1	108.1	120.8	113.8
Special Backward Classes (SBC)	175.9	174.6	175.3	89.2	71.3	79.9
Muslim	89.6	93.0	91.2	88.2	81.3	84.8

8.3 Gender Parity Index (GPI)

Social Groups	Primary Section	Upper Primary Section	Secondary Section	Higher Secondary Section	Elementry Section	All (Class 1-12)
All Social Groups	0.90	0.88	0.76	0.66	0.89	0.85
General	0.89	0.88	0.88	0.72	0.89	0.86
Schedule Castes (SC)	0.94	0.88	0.75	0.75	0.92	0.87
Schedule Tribes (ST)	0.93	0.85	0.74	0.59	0.90	0.85
Other Backward Classes (OBC)	0.89	0.87	0.71	0.59	0.89	0.83
Vimukat Jatis (VJ)	0.93	0.85	0.72	0.51	0.90	0.86
Nomadic Tribes (NT)	0.87	0.85	0.69	0.53	0.86	0.81
Special Backward Classes (SBC)	0.93	0.74	0.78	0.66	0.86	0.83
Muslim	0.96	0.93	0.96	1.05	0.95	0.96

8.4 Retention Rate

Social Groups	Primary			UpperPrimary		
	Boys	Girls	Total	Boys	Girls	Total
All Social Groups	86.40	85.61	86.03	91.04	91.04	88.27
General	82.49	80.30	81.46	89.78	89.78	84.97
Schedule Castes (SC)	76.19	79.27	77.65	83.85	75.49	79.86
Schedule Tribes (ST)	67.01	61.49	64.39	68.51	70.16	69.24
Other Backward Classes (OBC)	67.01	61.49	64.39	100.08	92.84	96.66
Muslim	76.89	75.55	86.03	80.07	72.48	88.27