



शिक्षणाचा अधिकार

सर्व शिक्षा अभियान
सारे शिक्षा, पुढे जाऊया

District Profile

Based on Unified District Information System for Education (UDISE), 2012-13

District : Pune

1 – Demographic (Source : Census of India,2011)

	Male	Female	Person	Sex Ratio	Child Sex Ratio (0-6 years)
Population	4,936,362	4,490,597	9,426,959		
Literacy rate	92.7	81.1	87.2	910	873

2- Number of Schools by Management and Category

Indicator (Number of schools)	Govt. and Local bodies	Pvt. Aided	Pvt. Unaided	Un-recognised	Total
Primary (1-4)	3,005	163	216	67	3,451
Primary with Upper Primary (1-7)	1,262	175	377	28	1,842
Pri,Upper,Secondary with Hsecondary (1 to 12)	15	2	34	0	51
Only Upper Primary	5	0	0	0	5
Upper,Secondary with Hsecondary (5 to 12)	8	244	11	1	264
Primary,Upperprimary with Secondary(1 to 10)	25	9	116	6	156
Upperprimary with Secondary(5 to 10)	16	382	70	3	471
Secondary Only (8 to 10)	26	198	250	13	487
Secondary with HSecondary(8 to 12)	1	22	28	0	51
Higher Secondary with college attached (11 to 12)	0	30	39	2	71
Total	4,363	1,225	1,141	120	6,849
Having Primary level classes	4,307	349	743	101	5,500
Having Upper Primary level classes	1,358	1,032	886	51	3,327
Having Secondary level classes	91	857	509	23	1,480
Having HigherSecondary level classes	24	298	112	3	437
Ratio of Primary to Upper Primary schools	State average				1.6
	District				1.7

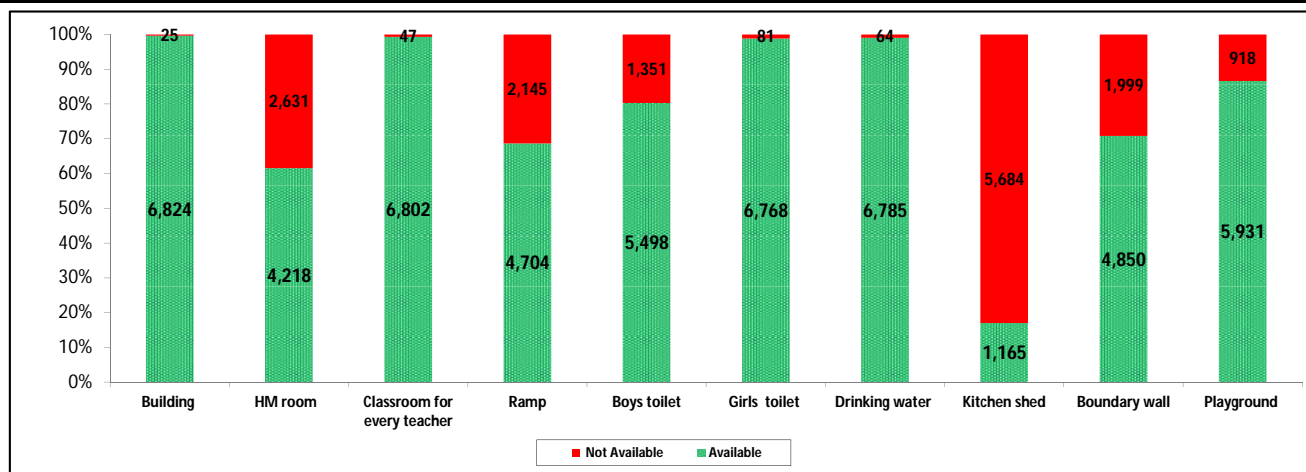
3 - Number of Mediumwise Schools by Management .

Indicator (Number of Mediumwise schools)	Govt. and Local bodies	Pvt. Aided	Pvt. Unaided	Un-recognised	Total
Marathi	4,210	1,119	292	35	5,656
English	70	47	830	80	1,027
Hindi	6	19	8	2	35
Urdu	73	33	11	3	120
Bangali	0	0	0	0	0
Gujrati	0	4	0	0	4
Kannada	2	1	0	0	3
Sindhi	0	0	0	0	0
Tamil	1	2	0	0	3
Telgu	1	0	0	0	1
Total	4,363	1,225	1,141	120	6,849

4 – Infrastructure

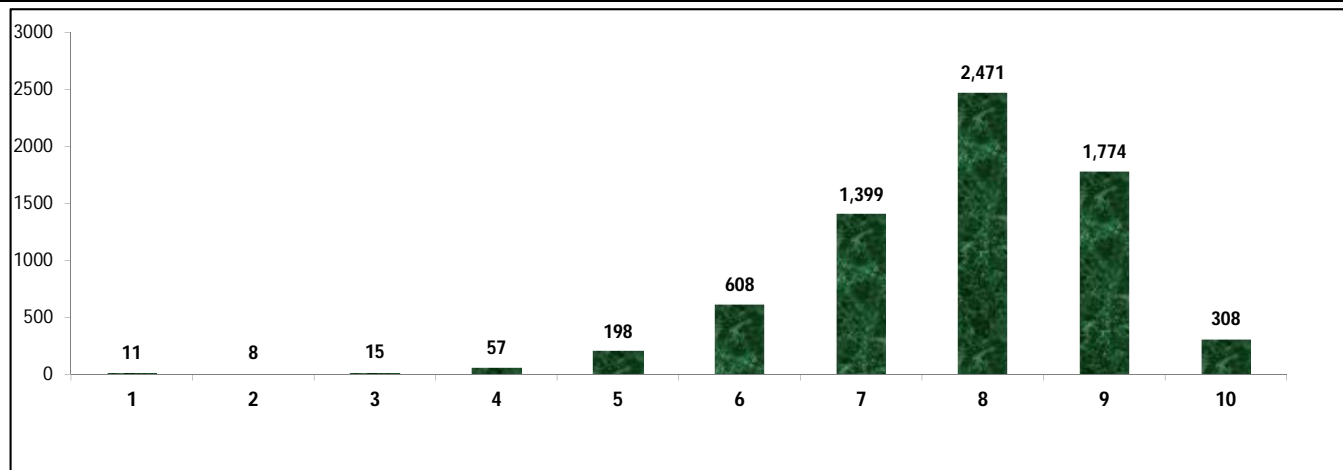
(Norms as specified in the schedule under section 19 of "The right of children to free and compulsory education act, 2009" (RTE Act))

Status of Infrastructure Facilities in Schools (Numbers, All schools)



Indicator : Schools with infrastructure facilities available		Govt. and Local bodies	Pvt. Aided	Pvt. Unaided	Un-recognised	Total
Total Schools		4363	1225	1141	120	6849
1. Building	Number	4,339	1,225	1,140	120	6,824
	%	99.4	100.0	99.9	100.0	99.6
2. Office-cum-store-cum-HM room	Number	2,020	1,048	1,044	106	4,218
	%	46.3	85.6	91.5	88.3	61.6
3. One classroom for every teacher	Number	4,317	1,225	1,140	120	6,802
	%	98.9	100.0	99.9	100.0	99.3
4. Ramp	Number	3,996	313	352	43	4,704
	%	91.6	25.6	30.9	35.8	68.7
5. Separate toilet for boys	Number	3,238	1,067	1,074	119	5,498
	%	74.2	87.1	94.1	99.2	80.3
6. Separate toilet for girls	Number	4,305	1,212	1,131	120	6,768
	%	98.7	98.9	99.1	100.0	98.8
7. Drinking water facility	Number	4,302	1,223	1,141	119	6,785
	%	98.6	99.8	100.0	99.2	99.1
8. Kitchen shed	Number	950	181	34	0	1,165
	%	21.8	14.8	3.0	0.0	17.0
9. Boundary wall	Number	2,738	973	1,035	104	4,850
	%	62.8	79.4	90.7	86.7	70.8
10. Playground	Number	3,688	1,109	1,041	93	5,931
	%	84.5	90.5	91.2	77.5	86.6
Indicators		Govt. and Local bodies	Pvt. Aided	Pvt. Unaided	Un-recognised	Total
Number of classrooms(1 to 8)		17,300	9,644	10,311	714	37,969
Number of classrooms(9 to 10)		370	3,296	1,436	41	5,143
Number of classrooms(11 to 12)		107	1,836	6	6	1,955
Student Classroom Ratio (SCR) Primary		24	UpperPri.	38	Elementry	34
Primary schools having SCR more than 30	Number	257	111	105	8	481
	%	5.9	9.1	9.2	6.7	7.0
Upper Primary. schools having SCR more than 35	Number	12	639	206	1	858
	%	0.3	52.2	18.1	0.8	12.5
Schools fulfilling "10" infrastructure norms for building under RTE	Number	283	22	3	0	308
	%	6.5	1.8	0.3	0.0	4.5

Number of schools by number of infrastructure elements complinace for building under RTE



5- Enrolment

Number of students enrolled in		Govt. and Local bodies	Pvt. Aided	Pvt. Unaided	Un-recognised	Total
Primary Classes (1-5)	Boys	169,962	97,727	162,930	6,166	436,785
	Girls	165,030	91,656	118,595	4,442	379,723
	Total	334,992	189,383	281,525	10,608	816,508
Upper Primary Classes (6-8)	Boys	47,741	145,370	61,228	825	255,164
	Girls	47,009	125,058	42,766	544	215,377
	Total	94,750	270,428	103,994	1,369	470,541
Secondary Classes (9-10)	Boys	9,932	105,363	32,923	318	148,536
	Girls	9,004	92,718	23,299	239	125,260
	Total	18,936	198,081	56,222	557	273,796
Higher Secondary Classes (11-12)	Boys	2,281	75,759	12,305	93	90,438
	Girls	2,394	70,740	10,093	100	83,327
	Total	4,675	146,499	22,398	193	173,765
Elementary Classes (1-8)	Boys	217,703	243,097	224,158	6,991	691,949
	Girls	212,039	216,714	161,361	4,986	595,100
	Total	429,742	459,811	385,519	11,977	1,287,049
All Classes (1-12)	Boys	229,916	424,219	269,386	7,402	930,923
	Girls	223,437	380,172	194,753	5,325	803,687
	Total	453,353	804,391	464,139	12,727	1,734,610

5.1- Castewise Enrolment

Indicator	Primary (1-5)	Upper Primary (6-8)	Secondary (9-10)	Higher Sec. (11-12)	Elementry (1-8)	All (Class 1-12)
All Social Groups	816,508	470,541	273,796	173,765	1,287,049	1,734,610
General	431,502	254,384	153,341	101,116	685,886	940,343
Schedule Castes (SC)	136,222	78,351	42,615	22,917	214,573	280,105
Schedule Tribes (ST)	38,804	20,186	10,490	6,106	58,990	75,586
Other Backward Classes (OBC)	209,980	117,620	67,350	43,626	327,600	438,576
Muslim	69,128	36,033	17,967	7,521	105,161	130,649
Nomadic Tribes (NT)	64,853	36,182	20,366	12,275	101,035	133,676
Vimukat Jatis (VJ)	31,285	14,591	6,866	3,535	45,876	56,277
Special Backward Classes (SBC)	5,136	3,234	2,000	1,751	8,370	12,121
Bouddhist Minority	14,674	7,977	4,438	2,571	22,651	29,660
Parshi Minority	335	138	143	23	473	639
Christan Minority	6,667	4,564	2,631	1,477	11,231	15,339
Sikh Minority	907	451	275	139	1,358	1,772
Jain Minority	5,454	2,981	2,009	1,072	8,435	11,516
B. P. L.	21,784	11,189	5,326	2,115	32,973	40,414
Children with Special Needs (C.W.S.N.)	13,788	7,468	2,984	449	21,256	24,689

5.2- Mediumwise Enrolment

Indicator (Number of Mediumwise schools)	Govt. and Local bodies	Pvt. Aided	Pvt. Unaided	Un-recognised	Total
Marathi	397,521	725,687	76,355	4,814	1,204,377
English	33,234	48,007	383,854	7,484	472,579
Hindi	3,400	10,357	1,832	158	15,747
Urdu	18,538	17,898	2,098	271	38,805
Bangali	0	0	0	0	0
Gujrati	0	2,147	0	0	2,147
Kannada	622	201	0	0	823
Sindhi	0	0	0	0	0
Tamil	15	94	0	0	109
Telgu	23	0	0	0	23
Total	453,353	804,391	464,139	12,727	1,734,610
School size (Distribution of schools by Enrolment)	Govt. and Local bodies	Pvt. Aided	Pvt. Unaided	Un-recognised	Total
Less than 10	311	0	9	2	322
11-20	727	5	16	9	757
21-30	752	12	19	6	789
31-60	851	24	78	27	980
61-150	796	160	253	48	1,257
More than 150	926	1,024	766	28	2,744

6- Gender Gap in Enrolment (in %)

Indicator	Primary (1-5)	Upper Primary (6-8)	Secondary (9-10)	Higher Secondary (11-12)	Elementry (1-8)	All (Class 1-12)
All Social Groups	6.99	8.46	8.50	4.09	7.52	7.34
General	8.08	8.79	8.30	1.89	8.35	7.64
Schedule Castes (SC)	4.77	6.51	7.00	4.37	5.41	5.57
Schedule Tribes (ST)	5.25	7.75	9.40	8.97	6.11	6.79
Other Backward Classes (OBC)	6.50	9.15	9.77	0.86	6.24	5.17
Muslim	0.79	3.90	0.72	-25.46	1.86	0.13
Nomadic Tribes (NT)	7.28	9.64	12.62	11.23	8.12	9.09
Vimukat Jatis (VJ)	3.28	8.85	12.44	14.96	5.05	6.57
Special Backward Classes (SBC)	5.61	7.24	4.50	4.50	6.24	5.17
Bouddhist Minority	8.10	9.56	7.75	-2.99	8.61	7.48
Parshi Minority	13.43	13.04	17.48	4.35	13.32	13.93
Christan Minority	6.10	0.74	-2.39	0.61	3.93	2.52
Sikh Minority	5.62	2.44	-9.09	13.67	4.57	3.16
Jain Minority	7.77	7.28	6.42	8.40	7.60	7.47
B. P. L.	8.46	4.98	0.56	1.28	7.28	6.08
Children with Special Needs (C.W.S.N.)	16.12	19.76	19.30	20.27	3.93	17.68
No. of clusters having gender gap > 10 %	83	126	162	79	89	87
No. of Block having gender gap > 10 %	0	4	7	5	2	2

7- Teacher

(Norms as specified in the schedule under section 19 and 23 of the RTE Act)

Indicators	Govt. and Local bodies	Pvt. Aided	Pvt. Unaided	Un-recognised	Total	
Number of Teachers	Male	7,852	10,692	2,316	20,970	
	Female	10,340	9,210	12,258	32,427	
	Total	18,192	19,902	14,574	729	53,397
Percentage of female teachers to total teachers	56.8	46.3	84.1	84.9	60.7	
Schools without a female teacher	Number	1,243	107	27	3	1,380
	%	28.5	8.7	2.4	2.5	20.1

7.1- Mediumwise Teacher

Medium	Govt. and Local bodies	Pvt. Aided	Pvt. Unaided	Un-recognised	Total
Marathi	16,662	18,250	2,245	214	37,371
English	930	985	12,210	490	14,615
Hindi	98	253	49	9	409
Urdu	485	339	70	16	910
Bangali	0	0	0	0	0
Gujrati	0	67	0	0	67
Kannada	15	5	0	0	20
Sindhi	0	0	0	0	0
Tamil	1	3	0	0	4
Telgu	1	0	0	0	1
Total	18,192	19,902	14,574	729	53,397

7.2- Castewise Teacher

Caste	Govt. and Local bodies	Pvt. Aided	Pvt. Unaided	Un-recognised	Total	
All	18,192	19,902	14,574	729	53,397	
Genral	8,774	9,502	10,624	463	29,363	
SC	2,243	2,623	880	64	5,810	
ST	1,264	1,120	249	24	2,657	
OBC	3,293	3,596	1,405	96	8,390	
VJ	884	1,099	429	24	2,436	
NT	570	504	121	13	1,208	
SBC	350	268	122	3	743	
NT-B	113	125	36	2	276	
NT-C	370	92	92	0	554	
NT-D	135	41	41	3	220	
Indicators	Govt. and Local bodies	Pvt. Aided	Pvt. Unaided	Un-recognised	Total	
Schools with single teacher	Number	65	5	7	2	79
	%	1.5	0.4	0.6	1.7	1.2
PTR	Local Body-Only	Primary Section	Upper Primary Section	Secondary Section	Elementry Section	All (Class 1-12)
Pupil Teacher Ratio	24	35	31	25	33	32
Indicators	Govt. and Local bodies	Pvt. Aided	Pvt. Unaided	Un-recognised	Total	
Primary schools having PTR more than 30	Number	328	110	114	9	561
	%	7.6	31.5	15.3	8.9	10.2
Upper Primary having PTR more than 35	Number	146	325	105	0	576
	%	10.8	31.5	11.9	0.0	17.3
Trained /Untrained Teacher	Primary Section	Upper Primary Section	Secondary Section	Higher Secondary Section	Elementry Section	All (Class 1-12)
Teacher All	23,506	15,104	11,088	3,699	38,610	53,397
Trained Teacher Number	22,731	14,765	10,837	3,462	37,496	51,795
%	96.7	97.8	97.7	93.6	97.1	97.0
Untrained Teacher All Number	775	339	251	237	1,114	1,602
%	3.3	2.2	2.3	6.4	2.9	3.0

8-Efficiency indicators

8.1 Annual Average Drop-out Rate

Social Groups	Primary			UpperPrimary		
	Boys	Girls	Total	Boys	Girls	Total
All Social Groups	3.02	2.42	2.74	0.60	1.20	0.90
General	-4.48	-3.00	-3.80	0.22	1.05	0.60
Schedule Castes (SC)	-2.47	-1.03	-1.78	0.56	1.89	1.19
Schedule Tribes (ST)	9.79	10.12	9.95	11.66	10.75	11.24
Other Backward Classes (OBC)	-9.65	-9.48	-9.57	-10.49	-9.05	-9.83
Vimukat Jatis (VJ)	2.18	0.18	1.23	12.78	16.51	14.52
Nomadic Tribes (NT)	-1.31	2.06	0.29	-3.24	-1.69	-2.53
Special Backward Classes (SBC)	7.69	0.26	4.34	9.73	6.19	8.13
Muslim	-5.87	-6.51	-6.18	-1.85	1.41	-0.26

8.2 Transition Rate

Social Groups	Primary			UpperPrimary		
	Boys	Girls	Total	Boys	Girls	Total
All Social Groups	103.9	102.9	103.4	100.3	98.5	99.5
General	103.8	102.2	103.1	98.5	97.9	98.2
Schedule Castes (SC)	102.9	100.3	101.7	97.6	94.6	96.2
Schedule Tribes (ST)	88.9	89.7	89.3	87.6	86.2	87.0
Other Backward Classes (OBC)	107.8	109.3	108.5	109.3	109.3	107.7
VJ / NT	100.9	102.9	101.8	105.5	108.1	106.7
Special Backward Classes (SBC)	101.8	122.5	110.4	88.6	93.1	90.6
Muslim	106.7	108.9	107.8	95.0	92.3	93.7

8.3 Gender Parity Index (GPI)

Social Groups	Primary Section	Upper Primary Section	Secondary Section	Higher Secondary Section	Elementry Section	All (Class 1-12)
All Social Groups	0.87	0.84	0.84	0.92	0.86	0.86
General	0.85	0.84	0.84	0.96	0.85	0.86
Schedule Castes (SC)	0.91	0.88	0.87	0.87	0.90	0.89
Schedule Tribes (ST)	0.90	0.86	0.83	0.84	0.88	0.87
Other Backward Classes (OBC)	0.88	0.83	0.82	0.85	0.86	0.85
Vimukat Jatis (VJ)	0.94	0.84	0.78	0.74	0.90	0.88
Nomadic Tribes (NT)	0.86	0.82	0.78	0.80	0.85	0.83
Special Backward Classes (SBC)	0.89	0.87	0.91	0.98	0.88	0.90
Muslim	0.98	0.92	0.99	1.68	0.96	1.00

8.4 Retention Rate

Social Groups	Primary			UpperPrimary		
	Boys	Girls	Total	Boys	Girls	Total
All Social Groups	107.63	102.16	105.05	102.05	102.05	100.84
General	109.01	103.18	106.29	103.89	103.89	100.56
Schedule Castes (SC)	102.34	97.07	99.79	98.28	95.03	96.75
Schedule Tribes (ST)	83.79	82.73	83.29	84.38	83.80	84.12
Other Backward Classes (OBC)	83.79	82.73	83.29	104.18	103.33	103.80
Muslim	106.60	107.10	105.05	96.83	94.02	100.84