



District Profile

Based on Unified District Information System for Education (UDISE), 2012-13

District : Ratnagiri

1 – Demographic (Source : Census of India,2011)

	Male	Female	Person	Sex Ratio	Child Sex Ratio (0-6 years)
Population	759,703	852,969	1,612,672		
Literacy rate	91.4	74.6	82.4	1123	940

2- Number of Schools by Management and Category

Indicator (Number of schools)	Govt. and Local bodies	Pvt. Aided	Pvt. Unaided	Un-recognised	Total
Primary (1-4)	1,666	24	40	15	1,745
Primary with Upper Primary (1-7)	1,097	4	49	3	1,153
Pri,Upper,Secondary with Hsecondary (1 to 12)	0	0	2	0	2
Only Upper Primary	1	0	0	0	1
Upper,Secondary with Hsecondary (5 to 12)	2	74	2	0	78
Primary,Upperprimary with Secondary(1 to 10)	3	0	2	0	5
Upperprimary with Secondary(5 to 10)	1	98	5	0	104
Secondary Only (8 to 10)	0	136	44	10	190
Secondary with HSecondary(8 to 12)	0	17	8	1	26
Higher Secondary with college attached (11 to 12)	0	5	5	1	11
Total	2,770	358	157	30	3,315
Having Primary level classes	2,766	28	93	18	2,905
Having Upper Primary level classes	1,104	329	112	14	1,559
Having Secondary level classes	6	325	63	11	405
Having HigherSecondary level classes	2	96	17	2	117
Ratio of Primary to Upper Primary schools	State average				1.6
	District				1.9

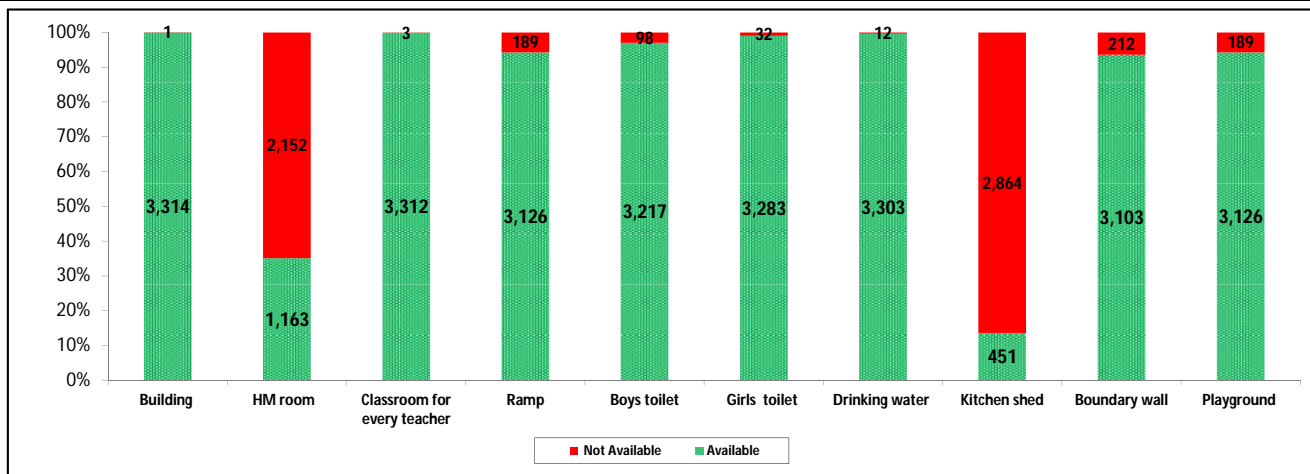
3 - Number of Mediumwise Schools by Management .

Indicator (Number of Mediumwise schools)	Govt. and Local bodies	Pvt. Aided	Pvt. Unaided	Un-recognised	Total
Marathi	2,589	324	37	13	2,963
English	3	0	105	16	124
Hindi	0	0	0	0	0
Urdu	178	34	15	1	228
Bangali	0	0	0	0	0
Gujrati	0	0	0	0	0
Kannada	0	0	0	0	0
Sindhi	0	0	0	0	0
Tamil	0	0	0	0	0
Telgu	0	0	0	0	0
Total	2,770	358	157	30	3,315

4 – Infrastructure

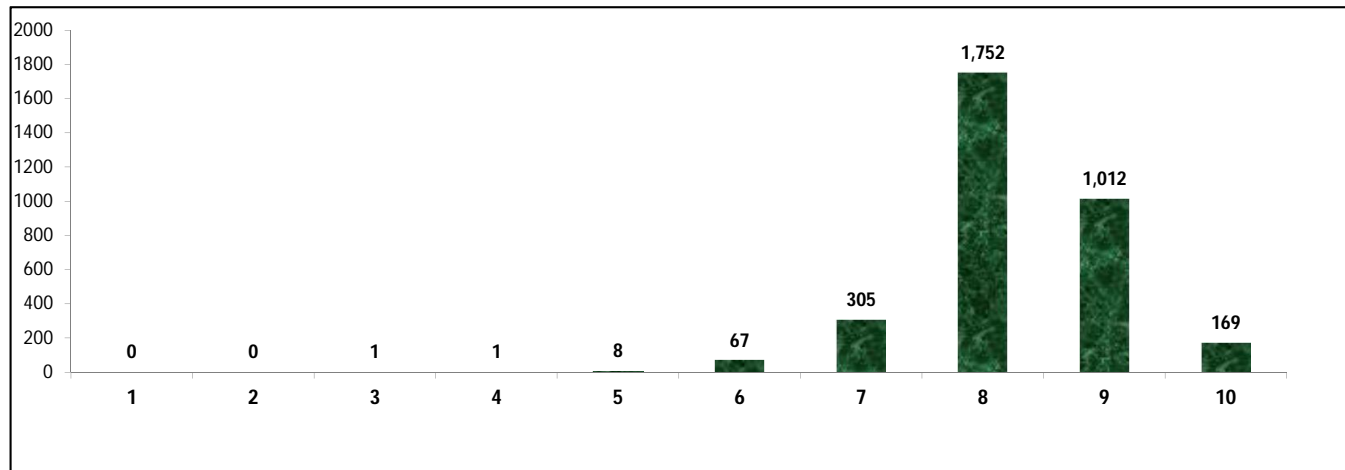
(Norms as specified in the schedule under section 19 of "The right of children to free and compulsory education act, 2009"(RTE Act))

Status of Infrastructure Facilities in Schools (Numbers, All schools)



Indicator : Schools with infrastructure facilities available		Govt. and Local bodies	Pvt. Aided	Pvt. Unaided	Un-recognised	Total
Total Schools		2770	358	157	30	3315
1. Building	Number	2,769	358	157	30	3,314
	%	100.0	100.0	100.0	100.0	100.0
2. Office-cum-store-cum-HM room	Number	787	225	132	19	1,163
	%	28.4	62.8	84.1	63.3	35.1
3. One classroom for every teacher	Number	2,768	358	157	29	3,312
	%	99.9	100.0	100.0	96.7	99.9
4. Ramp	Number	2,703	291	117	15	3,126
	%	97.6	81.3	74.5	50.0	94.3
5. Separate toilet for boys	Number	2,704	338	150	25	3,217
	%	97.6	94.4	95.5	83.3	97.0
6. Separate toilet for girls	Number	2,745	357	153	28	3,283
	%	99.1	99.7	97.5	93.3	99.0
7. Drinking water facility	Number	2,758	358	157	30	3,303
	%	99.6	100.0	100.0	100.0	99.6
8. Kitchen shed	Number	350	99	2	0	451
	%	12.6	27.7	1.3	0.0	13.6
9. Boundary wall	Number	2,599	341	140	23	3,103
	%	93.8	95.3	89.2	76.7	93.6
10. Playground	Number	2,599	353	149	25	3,126
	%	93.8	98.6	94.9	83.3	94.3
Indicators		Govt. and Local bodies	Pvt. Aided	Pvt. Unaided	Un-recognised	Total
Number of classrooms(1 to 8)		8,711	1,727	822	71	11,331
Number of classrooms(9 to 10)		14	831	123	20	988
Number of classrooms(11 to 12)		4	372	6	6	388
Student Classroom Ratio (SCR) Primary		13	UpperPri.	23	Elementry	20
Primary schools having SCR more than 30	Number	14	14	15	2	45
	%	0.5	3.9	9.6	6.7	1.4
Upper Primary. schools having SCR more than 35	Number	3	231	22	0	256
	%	0.1	64.5	14.0	0.0	7.7
Schools fulfilling "10" infrastructure norms for building under RTE	Number	116	51	2	0	169
	%	4.2	14.2	1.3	0.0	5.1

Number of schools by number of infrastructure elements complinace for building under RTE



5- Enrolment

Number of students enrolled in		Govt. and Local bodies	Pvt. Aided	Pvt. Unaided	Un-recognised	Total
Primary Classes (1-5)	Boys	46,762	8,653	10,306	545	66,266
	Girls	47,457	7,852	7,348	355	63,012
	Total	94,219	16,505	17,654	900	129,278
Upper Primary Classes (6-8)	Boys	17,162	25,903	4,503	107	47,675
	Girls	17,130	24,101	3,386	123	44,740
	Total	34,292	50,004	7,889	230	92,415
Secondary Classes (9-10)	Boys	392	27,758	2,827	247	31,224
	Girls	149	25,368	2,146	258	27,921
	Total	541	53,126	4,973	505	59,145
Higher Secondary Classes (11-12)	Boys	112	17,983	1,941	82	20,118
	Girls	15	15,952	1,422	59	17,448
	Total	127	33,935	3,363	141	37,566
Elementary Classes (1-8)	Boys	63,924	34,556	14,809	652	113,941
	Girls	64,587	31,953	10,734	478	107,752
	Total	128,511	66,509	25,543	1,130	221,693
All Classes (1-12)	Boys	64,428	80,297	19,577	981	165,283
	Girls	64,751	73,273	14,302	795	153,121
	Total	129,179	153,570	33,879	1,776	318,404

5.1- Castewise Enrolment

Indicator	Primary (1-5)	Upper Primary (6-8)	Secondary (9-10)	Higher Sec. (11-12)	Elementry (1-8)	All (Class 1-12)
All Social Groups	129,278	92,415	59,145	37,566	221,693	318,404
General	37,515	25,707	16,475	11,439	63,222	91,136
Schedule Castes (SC)	10,220	8,021	5,183	3,494	18,241	26,918
Schedule Tribes (ST)	2,561	1,288	526	282	3,849	4,657
Other Backward Classes (OBC)	78,982	57,399	36,961	22,351	136,381	195,693
Muslim	18,425	10,878	6,171	3,508	29,303	38,982
Nomadic Tribes (NT)	7,305	5,055	3,030	1,850	12,360	17,240
Vimukat Jatis (VJ)	1,193	544	301	237	1,737	2,275
Special Backward Classes (SBC)	2,928	2,203	1,463	648	5,131	7,242
Bouddhist Minority	8,031	5,995	3,596	1,852	14,026	19,474
Parshi Minority	78	109	104	106	187	397
Christan Minority	73	53	68	58	126	252
Sikh Minority	11	3	7	24	14	45
Jain Minority	289	113	50	65	402	517
B. P. L.	20,742	12,625	5,537	4,822	33,367	43,726
Children with Special Needs (C.W.S.N.)	3,475	2,009	580	314	5,484	6,378

5.2- Mediumwise Enrolment

Indicator (Number of Mediumwise schools)	Govt. and Local bodies	Pvt. Aided	Pvt. Unaided	Un-recognised	Total
Marathi	120,263	144,451	6,218	920	271,852
English	494	0	25,185	813	26,492
Hindi	0	0	0	0	0
Urdu	8,422	9,119	2,476	43	20,060
Bangali	0	0	0	0	0
Gujrati	0	0	0	0	0
Kannada	0	0	0	0	0
Sindhi	0	0	0	0	0
Tamil	0	0	0	0	0
Telgu	0	0	0	0	0
Total	129,179	153,570	33,879	1,776	318,404
School size (Distribution of schools by Enrolment)	Govt. and Local bodies	Pvt. Aided	Pvt. Unaided	Un-recognised	Total
Less than 10	416	0	2	2	420
11-20	694	2	7	3	706
21-30	392	4	13	4	413
31-60	542	13	23	11	589
61-150	614	78	51	8	751
More than 150	112	261	61	2	436

6- Gender Gap in Enrolment (in %)

Indicator	Primary (1-5)	Upper Primary (6-8)	Secondary (9-10)	Higher Secondary (11-12)	Elementry (1-8)	All (Class 1-12)
All Social Groups	2.52	3.18	5.58	7.11	2.79	3.82
General	2.94	2.35	4.19	3.77	2.70	3.10
Schedule Castes (SC)	2.04	5.65	4.53	0.74	3.62	3.43
Schedule Tribes (ST)	1.76	8.39	13.31	9.93	3.98	5.39
Other Backward Classes (OBC)	2.40	3.09	6.24	3.40	3.64	4.00
Muslim	3.78	-0.15	1.57	4.62	2.32	2.41
Nomadic Tribes (NT)	3.85	3.70	8.58	1.51	3.79	4.39
Vimukat Jatis (VJ)	2.60	2.94	-0.33	2.95	2.71	2.33
Special Backward Classes (SBC)	1.09	7.04	5.54	5.54	3.64	4.00
Bouddhist Minority	-0.46	4.45	3.56	4.10	1.64	2.23
Parshi Minority	25.64	-2.75	-15.38	-15.09	9.09	-3.78
Christan Minority	6.85	9.43	17.65	37.93	7.94	17.46
Sikh Minority	45.45	-33.33	-42.86	50.00	28.57	28.89
Jain Minority	11.42	-7.96	4.00	23.08	5.97	7.93
B. P. L.	2.52	1.99	1.21	2.74	2.32	2.22
Children with Special Needs (C.W.S.N.)	14.94	8.51	11.38	5.10	7.94	12.10
No. of clusters having gender gap > 10 %	12	30	75	39	12	14
No. of Block having gender gap > 10 %	0	0	0	1	0	0

7- Teacher

(Norms as specified in the schedule under section 19 and 23 of the RTE Act)

Indicators	Govt. and Local bodies	Pvt. Aided	Pvt. Unaided	Un-recognised	Total
Number of Teachers	Male	5,299	2,892	364	8,598
	Female	3,558	1,114	669	5,413
	Total	8,857	4,006	1,033	14,011
Percentage of female teachers to total teachers	40.2	27.8	64.8	62.6	38.6
Schools without a female teacher	Number	997	60	14	1,072
	%	36.0	16.8	8.9	32.3

7.1- Mediumwise Teacher

Medium	Govt. and Local bodies	Pvt. Aided	Pvt. Unaided	Un-recognised	Total
Marathi	8,244	3,697	217	60	12,218
English	39	0	761	51	851
Hindi	0	0	0	0	0
Urdu	574	309	55	4	942
Bangali	0	0	0	0	0
Gujrati	0	0	0	0	0
Kannada	0	0	0	0	0
Sindhi	0	0	0	0	0
Tamil	0	0	0	0	0
Telgu	0	0	0	0	0
Total	8,857	4,006	1,033	115	14,011

7.2- Castewise Teacher

Caste	Govt. and Local bodies	Pvt. Aided	Pvt. Unaided	Un-recognised	Total
All	8,857	4,006	1,033	115	14,011
Genral	3,392	1,783	529	35	5,739
SC	1,217	513	95	13	1,838
ST	538	159	12	6	715
OBC	2,173	845	251	33	3,302
VJ	697	263	42	7	1,009
NT	245	95	14	4	358
SBC	235	45	15	1	296
NT-B	100	28	1	0	129
NT-C	118	1	1	0	120
NT-D	45	0	0	0	45

Indicators		Govt. and Local bodies	Pvt. Aided	Pvt. Unaided	Un-recognised	Total
Schools with single teacher	Number	66	0	3	2	71
	%	2.4	0.0	1.9	6.7	2.1
PTR	Local Body-Only	Primary Section	Upper Primary Section	Secondary Section	Elementry Section	All (Class 1-12)
Pupil Teacher Ratio	13	19	18	40	19	23

Indicators		Govt. and Local bodies	Pvt. Aided	Pvt. Unaided	Un-recognised	Total
Primary schools having PTR more than 30	Number	27	14	14	2	57
	%	1.0	50.0	15.1	11.1	2.0
Upper Primary having PTR more than 35	Number	7	54	11	0	72
	%	0.6	16.4	9.8	0.0	4.6
Trained /Untrained Teacher	Primary Section	Upper Primary Section	Secondary Section	Higher Secondary Section	Elementry Section	All (Class 1-12)
Teacher All	6,701	5,194	1,495	621	11,895	14,011
Trained Teacher Number	6,628	5,155	1,468	603	11,783	13,854
%	98.9	99.2	98.2	97.1	99.1	98.9
Untrained Teacher All Number	73	39	27	18	112	157
%	1.1	0.8	1.8	2.9	0.9	1.1

8-Efficiency indicators

8.1 Annual Average Drop-out Rate

Social Groups	Primary			UpperPrimary		
	Boys	Girls	Total	Boys	Girls	Total
All Social Groups	1.23	0.88	1.06	1.32	1.61	1.46
General	-0.17	-0.78	-0.47	1.27	0.56	0.92
Schedule Castes (SC)	6.44	5.67	6.06	0.82	3.02	1.87
Schedule Tribes (ST)	7.98	6.05	7.03	7.67	6.05	6.94
Other Backward Classes (OBC)	0.95	0.81	0.88	1.26	1.78	1.51
Vimukat Jatis (VJ)	-15.98	-24.73	-20.15	7.59	16.98	12.40
Nomadic Tribes (NT)	6.71	6.59	6.65	2.64	2.09	2.38
Special Backward Classes (SBC)	5.82	3.28	4.58	-2.79	-4.60	-3.62
Muslim	-4.15	-3.28	-3.73	1.22	0.49	0.86

8.2 Transition Rate

Social Groups	Primary			UpperPrimary		
	Boys	Girls	Total	Boys	Girls	Total
All Social Groups	98.8	98.8	98.8	98.0	96.1	97.1
General	102.1	101.0	101.6	99.2	96.6	97.9
Schedule Castes (SC)	94.9	95.6	95.2	99.9	97.0	98.5
Schedule Tribes (ST)	90.7	90.7	90.7	86.0	82.7	84.4
Other Backward Classes (OBC)	98.1	98.4	98.2	97.5	97.5	96.8
VJ / NT	107.0	108.3	107.7	100.6	107.3	103.7
Special Backward Classes (SBC)	91.7	100.9	96.2	114.0	122.7	117.9
Muslim	107.0	102.8	104.9	95.3	93.6	94.4

8.3 Gender Parity Index (GPI)

Social Groups	Primary Section	Upper Primary Section	Secondary Section	Higher Secondary Section	Elementary Section	All (Class 1-12)
All Social Groups	0.95	0.94	0.89	0.87	0.95	0.93
General	0.94	0.95	0.95	0.93	0.95	0.94
Schedule Castes (SC)	0.96	0.89	0.91	0.91	0.93	0.93
Schedule Tribes (ST)	0.97	0.85	0.77	0.82	0.92	0.90
Other Backward Classes (OBC)	0.95	0.94	0.88	0.82	0.95	0.92
Vimukat Jatis (VJ)	0.95	0.94	1.01	0.94	0.95	0.95
Nomadic Tribes (NT)	0.93	0.93	0.84	0.97	0.93	0.92
Special Backward Classes (SBC)	0.98	0.87	0.90	0.93	0.93	0.92
Muslim	0.93	1.00	0.97	0.91	0.95	0.95

8.4 Retention Rate

Social Groups	Primary			UpperPrimary		
	Boys	Girls	Total	Boys	Girls	Total
All Social Groups	110.81	109.36	110.10	100.66	100.66	99.64
General	112.22	113.88	113.03	99.33	99.33	99.01
Schedule Castes (SC)	108.72	106.97	107.87	104.90	99.63	102.31
Schedule Tribes (ST)	88.24	83.77	85.96	87.88	73.39	80.38
Other Backward Classes (OBC)	88.24	83.77	85.96	100.96	98.88	99.95
Muslim	120.35	127.36	110.10	92.52	97.85	99.64