



शिक्षणाचा अधिकार

सर्व शिक्षा अभियान
सारे शिक्षा, पुढे जाऊया

District Profile

Based on Unified District Information System for Education (UDISE), 2012-13

District : Sangli

1 – Demographic (Source : Census of India,2011)

	Male	Female	Person	Sex Ratio	Child Sex Ratio (0-6 years)
Population	1,435,972	1,384,603	2,820,575		
Literacy rate	90.4	74.7	82.6	964	862

2- Number of Schools by Management and Category

Indicator (Number of schools)	Govt. and Local bodies	Pvt. Aided	Pvt. Unaided	Un-recognised	Total
Primary (1-4)	1,223	80	86	22	1,411
Primary with Upper Primary (1-7)	574	93	74	7	748
Pri,Upper,Secondary with Hsecondary (1 to 12)	0	0	0	0	0
Only Upper Primary	0	0	0	0	0
Upper,Secondary with Hsecondary (5 to 12)	1	137	5	0	143
Primary,Upperprimary with Secondary(1 to 10)	0	0	11	1	12
Upperprimary with Secondary(5 to 10)	2	258	18	2	280
Secondary Only (8 to 10)	0	86	88	5	179
Secondary with HSecondary(8 to 12)	0	6	3	0	9
Higher Secondary with college attached (11 to 12)	0	24	10	0	34
Total	1,800	684	295	37	2,816
Having Primary level classes	1,797	173	171	30	2,171
Having Upper Primary level classes	577	580	199	15	1,371
Having Secondary level classes	3	487	125	8	623
Having HigherSecondary level classes	1	167	18	0	186
Ratio of Primary to Upper Primary schools	State average				1.6
	District				1.6

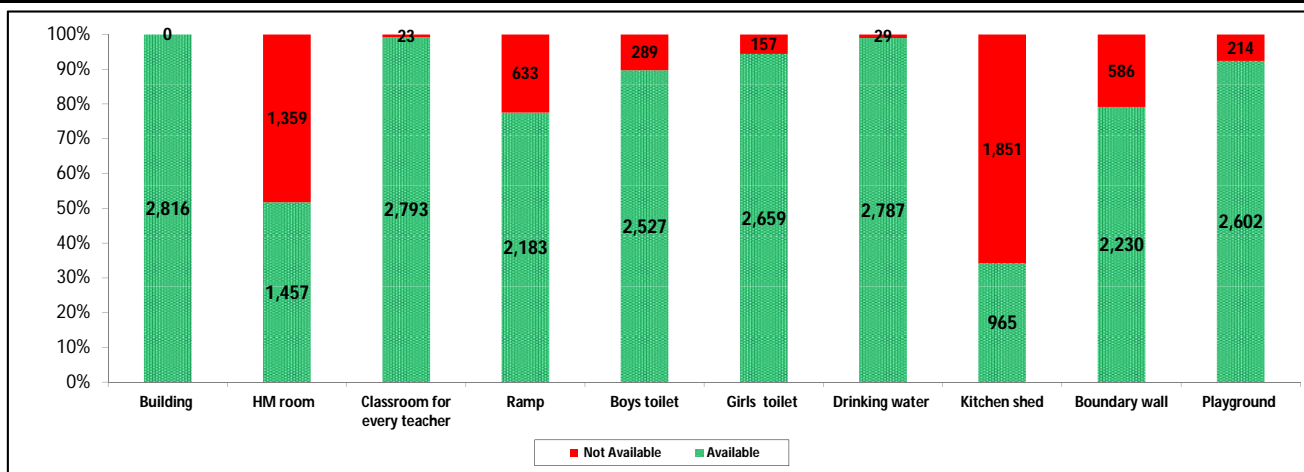
3 - Number of Mediumwise Schools by Management .

Indicator (Number of Mediumwise schools)	Govt. and Local bodies	Pvt. Aided	Pvt. Unaided	Un-recognised	Total
Marathi	1,625	632	131	12	2,400
English	1	6	136	24	167
Hindi	0	0	0	0	0
Urdu	47	11	20	1	79
Bangali	0	0	0	0	0
Gujrati	0	2	0	0	2
Kannada	127	33	8	0	168
Sindhi	0	0	0	0	0
Tamil	0	0	0	0	0
Telgu	0	0	0	0	0
Total	1,800	684	295	37	2,816

4 – Infrastructure

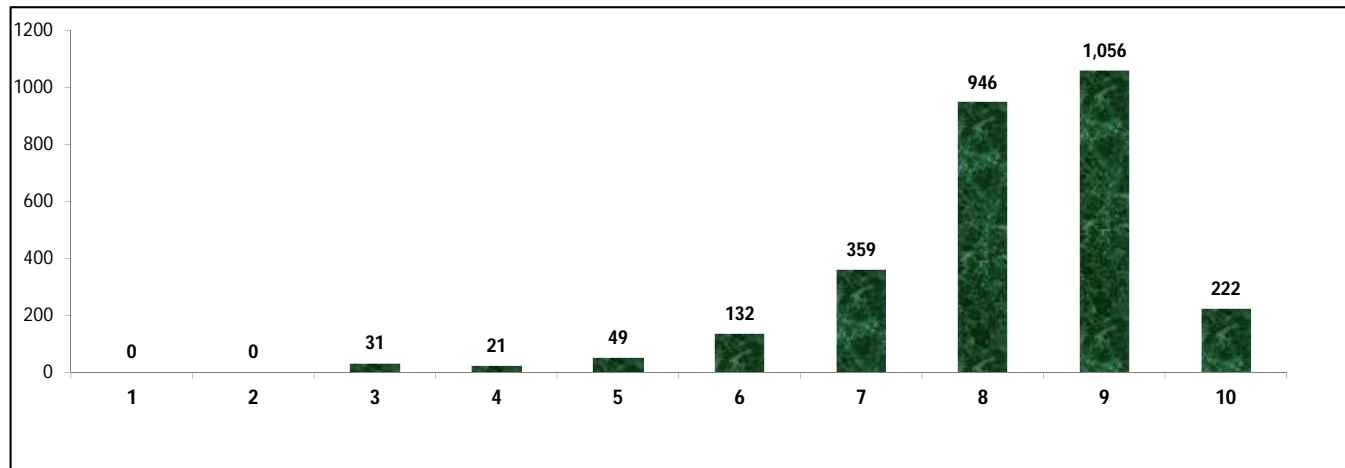
(Norms as specified in the schedule under section 19 of "The right of children to free and compulsory education act, 2009" (RTE Act))

Status of Infrastructure Facilities in Schools (Numbers, All schools)



Indicator : Schools with infrastructure facilities available		Govt. and Local bodies	Pvt. Aided	Pvt. Unaided	Un-recognised	Total
Total Schools		1800	684	295	37	2816
1. Building	Number	1,800	684	295	37	2,816
	%	100.0	100.0	100.0	100.0	100.0
2. Office-cum-store-cum-HM room	Number	689	501	242	25	1,457
	%	38.3	73.2	82.0	67.6	51.7
3. One classroom for every teacher	Number	1,777	684	295	37	2,793
	%	98.7	100.0	100.0	100.0	99.2
4. Ramp	Number	1,664	383	130	6	2,183
	%	92.4	56.0	44.1	16.2	77.5
5. Separate toilet for boys	Number	1,615	603	280	29	2,527
	%	89.7	88.2	94.9	78.4	89.7
6. Separate toilet for girls	Number	1,669	672	282	36	2,659
	%	92.7	98.2	95.6	97.3	94.4
7. Drinking water facility	Number	1,771	684	295	37	2,787
	%	98.4	100.0	100.0	100.0	99.0
8. Kitchen shed	Number	800	163	2	0	965
	%	44.4	23.8	0.7	0.0	34.3
9. Boundary wall	Number	1,409	545	246	30	2,230
	%	78.3	79.7	83.4	81.1	79.2
10. Playground	Number	1,641	654	277	30	2,602
	%	91.2	95.6	93.9	81.1	92.4
Indicators		Govt. and Local bodies	Pvt. Aided	Pvt. Unaided	Un-recognised	Total
Number of classrooms(1 to 8)		6,696	3,858	1,223	162	11,939
Number of classrooms(9 to 10)		12	1,627	239	7	1,885
Number of classrooms(11 to 12)		2	823	0	0	825
Student Classroom Ratio (SCR) Primary		23	UpperPri.	36	Elementry	32
Primary schools having SCR more than 30	Number	133	56	36	3	228
	%	7.4	8.2	12.2	8.1	8.1
Upper Primary. schools having SCR more than 35	Number	2	374	37	1	414
	%	0.1	54.7	12.5	2.7	14.7
Schools fulfilling "10" infrastructure norms for building under RTE	Number	160	62	0	0	222
	%	8.9	9.1	0.0	0.0	7.9

Number of schools by number of infrastructure elements complinace for building under RTE



5- Enrolment

Number of students enrolled in		Govt. and Local bodies	Pvt. Aided	Pvt. Unaided	Un-recognised	Total
Primary Classes (1-5)	Boys	66,452	39,996	16,726	1,374	124,548
	Girls	63,140	31,872	11,197	864	107,073
	Total	129,592	71,868	27,923	2,238	231,621
Upper Primary Classes (6-8)	Boys	14,156	59,902	6,822	322	81,202
	Girls	13,649	48,899	4,327	112	66,987
	Total	27,805	108,801	11,149	434	148,189
Secondary Classes (9-10)	Boys	584	43,794	4,676	132	49,186
	Girls	256	35,721	3,135	25	39,137
	Total	840	79,515	7,811	157	88,323
Higher Secondary Classes (11-12)	Boys	52	32,175	1,812	0	34,039
	Girls	18	28,503	1,118	0	29,639
	Total	70	60,678	2,930	0	63,678
Elementary Classes (1-8)	Boys	80,608	99,898	23,548	1,696	205,750
	Girls	76,789	80,771	15,524	976	174,060
	Total	157,397	180,669	39,072	2,672	379,810
All Classes (1-12)	Boys	81,244	175,867	30,036	1,828	288,975
	Girls	77,063	144,995	19,777	1,001	242,836
	Total	158,307	320,862	49,813	2,829	531,811

5.1- Castewise Enrolment

Indicator	Primary (1-5)	Upper Primary (6-8)	Secondary (9-10)	Higher Sec. (11-12)	Elementry (1-8)	All (Class 1-12)
All Social Groups	231,621	148,189	88,323	63,678	379,810	531,811
General	113,218	74,719	47,031	36,674	187,937	271,642
Schedule Castes (SC)	33,518	20,787	12,005	7,296	54,305	73,606
Schedule Tribes (ST)	1,557	727	301	280	2,284	2,865
Other Backward Classes (OBC)	83,328	51,956	28,986	19,428	135,284	183,698
Muslim	22,730	13,389	7,353	3,472	36,119	46,944
Nomadic Tribes (NT)	35,031	21,125	11,371	5,936	56,156	73,463
Vimukat Jatis (VJ)	11,488	6,149	2,675	1,798	17,637	22,110
Special Backward Classes (SBC)	2,362	1,944	1,291	909	4,306	6,506
Bouddhist Minority	766	421	220	231	1,187	1,638
Parshi Minority	10	6	1	6	16	23
Christan Minority	416	238	148	94	654	896
Sikh Minority	78	64	45	49	142	236
Jain Minority	4,601	2,881	2,016	1,249	7,482	10,747
B. P. L.	12,795	8,790	3,406	728	21,585	25,719
Children with Special Needs (C.W.S.N.)	6,976	4,158	1,891	232	11,134	13,257

5.2- Mediumwise Enrolment

Indicator (Number of Mediumwise schools)	Govt. and Local bodies	Pvt. Aided	Pvt. Unaided	Un-recognised	Total
Marathi	144,808	298,192	22,078	1,395	466,473
English	434	5,177	24,521	1,414	31,546
Hindi	0	0	0	0	0
Urdu	4,021	4,839	2,573	20	11,453
Bangali	0	0	0	0	0
Gujrati	0	335	0	0	335
Kannada	9,044	12,319	641	0	22,004
Sindhi	0	0	0	0	0
Tamil	0	0	0	0	0
Telgu	0	0	0	0	0
Total	158,307	320,862	49,813	2,829	531,811
School size (Distribution of schools by Enrolment)	Govt. and Local bodies	Pvt. Aided	Pvt. Unaided	Un-recognised	Total
Less than 10	64	1	3	1	69
11-20	296	3	8	2	309
21-30	304	3	11	8	326
31-60	354	15	34	9	412
61-150	373	100	115	13	601
More than 150	409	562	124	4	1,099

6- Gender Gap in Enrolment (in %)

Indicator	Primary (1-5)	Upper Primary (6-8)	Secondary (9-10)	Higher Secondary (11-12)	Elementry (1-8)	All (Class 1-12)
All Social Groups	7.54	9.59	11.38	6.91	8.34	8.68
General	8.68	10.63	10.86	4.10	9.45	8.98
Schedule Castes (SC)	4.73	5.74	8.37	6.28	5.11	5.76
Schedule Tribes (ST)	10.47	14.44	21.59	-8.57	11.73	10.79
Other Backward Classes (OBC)	7.09	9.57	13.35	8.91	9.29	9.50
Muslim	4.22	6.62	5.89	-5.93	5.11	4.42
Nomadic Tribes (NT)	6.58	7.25	12.53	13.65	6.83	8.26
Vimukat Jatis (VJ)	6.28	9.48	9.76	16.24	7.40	8.40
Special Backward Classes (SBC)	9.99	8.44	10.61	10.61	9.29	9.50
Bouddhist Minority	3.39	4.99	10.00	-28.14	3.96	0.24
Parshi Minority	-40.00	0.00	100.00	-66.67	-25.00	-30.43
Christan Minority	17.31	5.04	0.00	-46.81	12.84	4.46
Sikh Minority	10.26	9.38	6.67	-91.84	9.86	-11.86
Jain Minority	12.89	10.79	10.91	-2.48	12.08	10.17
B. P. L.	4.45	5.14	6.69	-18.41	4.73	4.34
Children with Special Needs (C.W.S.N.)	20.99	13.71	11.48	1.72	12.84	17.01
No. of clusters having gender gap > 10 %	36	53	75	45	37	42
No. of Block having gender gap > 10 %	1	4	6	4	2	3

7- Teacher

(Norms as specified in the schedule under section 19 and 23 of the RTE Act)

Indicators	Govt. and Local bodies	Pvt. Aided	Pvt. Unaided	Un-recognised	Total
Number of Teachers	Male	4,000	6,262	753	11,059
	Female	3,257	3,063	1,082	7,536
	Total	7,257	9,325	1,835	18,595
Percentage of female teachers to total teachers	44.9	32.8	59.0	75.3	40.5
Schools without a female teacher	Number	644	59	27	731
	%	35.8	8.6	9.2	26.0

7.1- Mediumwise Teacher

Medium	Govt. and Local bodies	Pvt. Aided	Pvt. Unaided	Un-recognised	Total
Marathi	6,601	8,642	785	65	16,093
English	18	105	907	111	1,141
Hindi	0	0	0	0	0
Urdu	174	139	105	2	420
Bangali	0	0	0	0	0
Gujrati	0	14	0	0	14
Kannada	464	425	38	0	927
Sindhi	0	0	0	0	0
Tamil	0	0	0	0	0
Telgu	0	0	0	0	0
Total	7,257	9,325	1,835	178	18,595

7.2- Castewise Teacher

Caste	Govt. and Local bodies	Pvt. Aided	Pvt. Unaided	Un-recognised	Total
All	7,257	9,325	1,835	178	18,595
Genral	3,161	4,978	1,161	123	9,423
SC	1,048	1,211	191	12	2,462
ST	418	355	49	3	825
OBC	1,426	1,476	257	23	3,182
VJ	583	635	105	6	1,329
NT	233	188	19	1	441
SBC	212	159	18	3	392
NT-B	56	77	4	4	141
NT-C	93	29	29	2	153
NT-D	27	2	2	1	32

Indicators		Govt. and Local bodies	Pvt. Aided	Pvt. Unaided	Un-recognised	Total
Schools with single teacher	Number	71	0	1	1	73
	%	3.9	0.0	0.3	2.7	2.6
PTR	Local Body-Only	Primary Section	Upper Primary Section	Secondary Section	Elementry Section	All (Class 1-12)
Pupil Teacher Ratio	0	35	26	19	31	29

Indicators		Govt. and Local bodies	Pvt. Aided	Pvt. Unaided	Un-recognised	Total
Primary schools having PTR more than 30	Number	143	61	36	3	243
	%	8.0	35.3	21.1	10.0	11.2
Upper Primary having PTR more than 35	Number	3	185	11	0	199
	%	0.5	31.9	5.5	0.0	14.5
Trained /Untrained Teacher	Primary Section	Upper Primary Section	Secondary Section	Higher Secondary Section	Elementry Section	All (Class 1-12)
Teacher All	6,681	5,758	4,597	1,559	12,439	18,595
Trained Teacher Number	6,604	5,716	4,558	1,527	12,320	18,405
%	98.8	99.3	99.2	97.9	99.0	99.0
Untrained Teacher All Number	77	42	39	32	119	190
%	1.2	0.7	0.8	2.1	1.0	1.0

8-Efficiency indicators

8.1 Annual Average Drop-out Rate

Social Groups	Primary			UpperPrimary		
	Boys	Girls	Total	Boys	Girls	Total
All Social Groups	1.98	2.23	2.10	1.70	2.44	2.04
General	3.35	3.61	3.47	5.56	4.53	5.10
Schedule Castes (SC)	3.65	4.17	3.90	3.43	4.46	3.92
Schedule Tribes (ST)	18.22	20.72	19.33	40.91	43.35	41.98
Other Backward Classes (OBC)	-1.10	-0.96	-1.04	-6.38	-2.63	-4.65
Vimukat Jatis (VJ)	8.47	8.27	8.38	4.56	6.30	5.36
Nomadic Tribes (NT)	2.70	1.98	2.37	6.83	7.63	7.20
Special Backward Classes (SBC)	-3.88	5.27	0.36	14.31	15.80	15.00
Muslim	3.42	6.50	4.91	0.52	5.59	2.95

8.2 Transition Rate

Social Groups	Primary			UpperPrimary		
	Boys	Girls	Total	Boys	Girls	Total
All Social Groups	98.2	98.0	98.1	96.9	95.3	96.2
General	95.5	96.6	96.0	93.3	94.0	93.6
Schedule Castes (SC)	98.0	98.1	98.0	95.7	93.2	94.5
Schedule Tribes (ST)	65.3	51.1	58.0	49.3	48.2	48.8
Other Backward Classes (OBC)	103.0	101.0	102.1	104.7	104.7	102.2
VJ / NT	104.9	104.6	104.8	109.5	113.2	111.2
Special Backward Classes (SBC)	129.1	113.4	121.3	80.8	86.4	83.4
Muslim	97.8	95.6	96.7	98.5	88.9	93.7

8.3 Gender Parity Index (GPI)

Social Groups	Primary Section	Upper Primary Section	Secondary Section	Higher Secondary Section	Elementary Section	All (Class 1-12)
All Social Groups	0.86	0.82	0.80	0.87	0.85	0.84
General	0.84	0.81	0.81	0.92	0.83	0.84
Schedule Castes (SC)	0.91	0.89	0.85	0.85	0.90	0.89
Schedule Tribes (ST)	0.81	0.75	0.64	1.19	0.79	0.81
Other Backward Classes (OBC)	0.87	0.83	0.76	0.77	0.85	0.83
Vimukat Jatis (VJ)	0.88	0.83	0.82	0.72	0.86	0.84
Nomadic Tribes (NT)	0.88	0.86	0.78	0.76	0.87	0.85
Special Backward Classes (SBC)	0.82	0.84	0.81	0.84	0.83	0.83
Muslim	0.92	0.88	0.89	1.13	0.90	0.92

8.4 Retention Rate

Social Groups	Primary			UpperPrimary		
	Boys	Girls	Total	Boys	Girls	Total
All Social Groups	104.13	94.27	94.17	96.35	96.35	95.59
General	93.92	93.07	93.53	93.58	93.58	92.53
Schedule Castes (SC)	89.29	92.18	90.64	93.48	92.58	93.06
Schedule Tribes (ST)	47.92	51.63	49.53	65.48	56.74	61.49
Other Backward Classes (OBC)	47.92	51.63	49.53	102.72	99.81	101.40
Muslim	90.67	89.45	94.17	94.96	86.96	95.59