



# District Profile

Based on Unified District Information System for Education (UDISE), 2012-13

District : Satara

1 – Demographic (Source : Census of India,2011)

	Male	Female	Person	Sex Ratio	Child Sex Ratio (0-6 years)
Population	1,512,524	1,491,398	3,003,922		
Literacy rate	92.1	76.3	84.2	986	881

2- Number of Schools by Management and Category

Indicator (Number of schools )	Govt. and Local bodies	Pvt. Aided	Pvt. Unaided	Un-recognised	Total
Primary (1-4)	1,833	56	69	32	1,990
Primary with Upper Primary (1-7)	965	44	100	7	1,116
Pri,Upper,Secondary with Hsecondary (1 to 12)	0	0	15	0	15
Only Upper Primary	0	0	0	0	0
Upper,Secondary with Hsecondary (5 to 12)	4	152	8	0	164
Primary,Upperprimary with Secondary(1 to 10)	2	2	32	0	36
Upperprimary with Secondary(5 to 10)	1	245	17	1	264
Secondary Only (8 to 10)	0	134	77	3	214
Secondary with HSecondary(8 to 12)	0	5	6	0	11
Higher Secondary with college attached (11 to 12)	0	20	6	0	26
<b>Total</b>	<b>2,805</b>	<b>658</b>	<b>330</b>	<b>43</b>	<b>3,836</b>
Having Primary level classes	2,800	102	216	39	3,157
Having Upper Primary level classes	972	582	255	11	1,820
Having Secondary level classes	7	538	155	4	704
Having HigherSecondary level classes	4	177	35	0	216
Ratio of Primary to Upper Primary schools	State average				1.6
	District				1.7

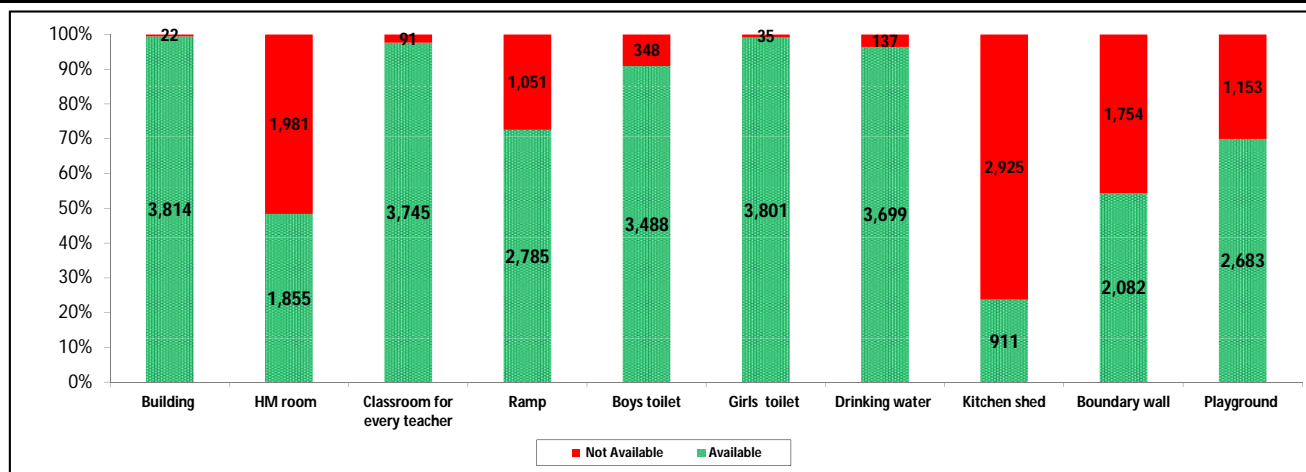
3 - Number of Mediumwise Schools by Management .

Indicator (Number of Mediumwise schools )	Govt. and Local bodies	Pvt. Aided	Pvt. Unaided	Un-recognised	Total
Marathi	2,789	648	113	7	3,557
English	1	4	203	36	244
Hindi	0	0	0	0	0
Urdu	15	6	14	0	35
Bangali	0	0	0	0	0
Gujrati	0	0	0	0	0
Kannada	0	0	0	0	0
Sindhi	0	0	0	0	0
Tamil	0	0	0	0	0
Telgu	0	0	0	0	0
<b>Total</b>	<b>2,805</b>	<b>658</b>	<b>330</b>	<b>43</b>	<b>3,836</b>

## 4 – Infrastructure

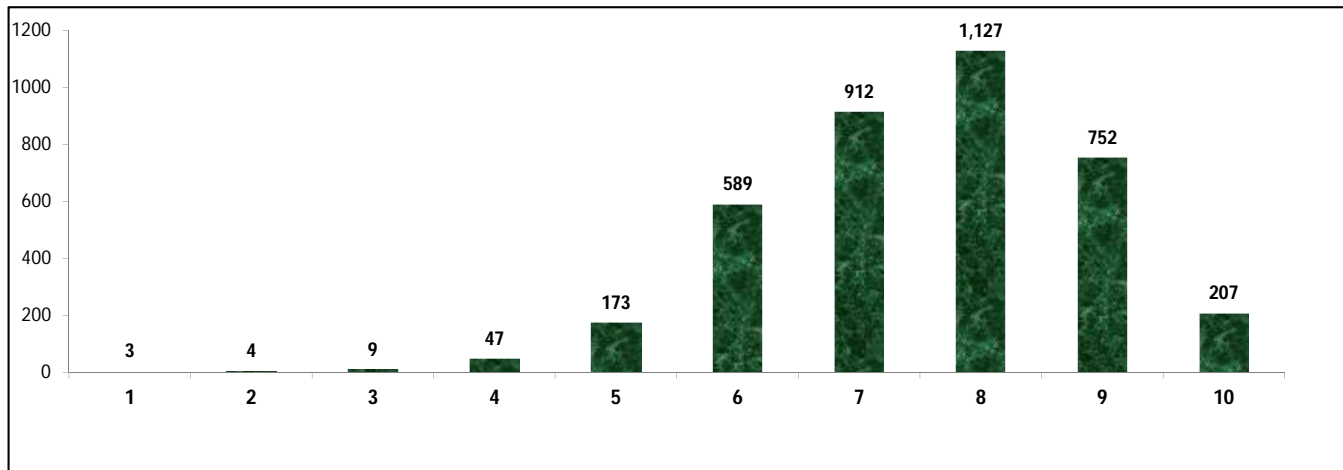
(Norms as specified in the schedule under section 19 of "The right of children to free and compulsory education act, 2009" ( RTE Act ) )

### Status of Infrastructure Facilities in Schools (Numbers, All schools)



Indicator : Schools with infrastructure facilities available		Govt. and Local bodies	Pvt. Aided	Pvt. Unaided	Un-recognised	Total
<b>Total Schools</b>		<b>2805</b>	<b>658</b>	<b>330</b>	<b>43</b>	<b>3836</b>
1. Building	Number	2,784	657	330	43	3,814
	%	99.3	99.8	100.0	100.0	99.4
2. Office-cum-store-cum-HM room	Number	1,122	440	260	33	1,855
	%	40.0	66.9	78.8	76.7	48.4
3. One classroom for every teacher	Number	2,716	657	329	43	3,745
	%	96.8	99.8	99.7	100.0	97.6
4. Ramp	Number	2,507	191	82	5	2,785
	%	89.4	29.0	24.8	11.6	72.6
5. Separate toilet for boys	Number	2,572	576	305	35	3,488
	%	91.7	87.5	92.4	81.4	90.9
6. Separate toilet for girls	Number	2,783	655	320	43	3,801
	%	99.2	99.5	97.0	100.0	99.1
7. Drinking water facility	Number	2,674	655	328	42	3,699
	%	95.3	99.5	99.4	97.7	96.4
8. Kitchen shed	Number	649	250	11	1	911
	%	23.1	38.0	3.3	2.3	23.7
9. Boundary wall	Number	1,338	449	267	28	2,082
	%	47.7	68.2	80.9	65.1	54.3
10. Playground	Number	1,774	583	289	37	2,683
	%	63.2	88.6	87.6	86.0	69.9
<b>Indicators</b>		<b>Govt. and Local bodies</b>	<b>Pvt. Aided</b>	<b>Pvt. Unaided</b>	<b>Un-recognised</b>	<b>Total</b>
Number of classrooms(1 to 8)		8,933	3,765	1,810	168	14,676
Number of classrooms(9 to 10)		21	1,792	309	6	2,128
Number of classrooms(11 to 12)		14	771	0	0	785
<b>Student Classroom Ratio (SCR) Primary</b>		<b>19</b>	<b>UpperPri.</b>	<b>29</b>	<b>Elementry</b>	<b>26</b>
Primary schools having SCR more than 30	Number	136	43	23	1	203
	%	4.8	6.5	7.0	2.3	5.3
Upper Primary. schools having SCR more than 35	Number	7	311	35	0	353
	%	0.2	47.3	10.6	0.0	9.2
<b>Schools fulfilling "10" infrastructure norms for building under RTE</b>	Number	138	67	2	0	207
	%	4.9	10.2	0.6	0.0	5.4

**Number of schools by number of infrastructure elements complinace for building under RTE**



**5- Enrolment**

Number of students enrolled in		Govt. and Local bodies	Pvt. Aided	Pvt. Unaided	Un-recognised	Total
Primary Classes (1-5)	Boys	72,581	28,070	21,835	1,385	123,871
	Girls	70,889	23,730	13,308	724	108,651
	Total	143,470	51,800	35,143	2,109	232,522
Upper Primary Classes (6-8)	Boys	15,634	56,017	8,440	127	80,218
	Girls	14,842	47,286	4,780	94	67,002
	Total	30,476	103,303	13,220	221	147,220
Secondary Classes (9-10)	Boys	591	45,981	5,675	52	52,299
	Girls	278	39,051	3,426	47	42,802
	Total	869	85,032	9,101	99	95,101
Higher Secondary Classes (11-12)	Boys	518	35,673	1,806	0	37,997
	Girls	296	30,395	979	0	31,670
	Total	814	66,068	2,785	0	69,667
Elementary Classes (1-8)	Boys	88,215	84,087	30,275	1,512	204,089
	Girls	85,731	71,016	18,088	818	175,653
	Total	173,946	155,103	48,363	2,330	379,742
All Classes (1-12)	Boys	89,324	165,741	37,756	1,564	294,385
	Girls	86,305	140,462	22,493	865	250,125
	Total	175,629	306,203	60,249	2,429	544,510

**5.1- Castewise Enrolment**

Indicator	Primary (1-5)	Upper Primary (6-8)	Secondary (9-10)	Higher Sec. (11-12)	Elementry (1-8)	All (Class 1-12)
<b>All Social Groups</b>	<b>232,522</b>	<b>147,220</b>	<b>95,101</b>	<b>69,667</b>	<b>379,742</b>	<b>544,510</b>
<b>General</b>	125,964	81,851	55,110	42,472	207,815	305,397
<b>Schedule Castes (SC)</b>	28,992	18,646	11,668	7,485	47,638	66,791
<b>Schedule Tribes (ST)</b>	3,573	1,588	981	534	5,161	6,676
<b>Other Backward Classes (OBC)</b>	73,993	45,135	27,342	19,176	119,128	165,646
<b>Muslim</b>	12,999	7,398	4,528	2,212	20,397	27,137
<b>Nomadic Tribes (NT)</b>	26,102	15,753	9,007	6,255	41,855	57,117
<b>Vimukat Jatis (VJ)</b>	13,428	7,341	3,798	2,119	20,769	26,686
<b>Special Backward Classes (SBC)</b>	1,010	796	521	708	1,806	3,035
<b>Bouddhist Minority</b>	3,537	1,867	1,191	1,129	5,404	7,724
<b>Parshi Minority</b>	33	37	31	12	70	113
<b>Christan Minority</b>	148	59	52	47	207	306
<b>Sikh Minority</b>	41	30	14	30	71	115
<b>Jain Minority</b>	494	249	213	73	743	1,029
<b>B. P. L.</b>	10,186	5,985	3,170	1,197	16,171	20,538
<b>Children with Special Needs (C.W.S.N.)</b>	4,191	1,787	592	70	5,978	6,640

## 5.2- Mediumwise Enrolment

Indicator (Number of Mediumwise schools )	Govt. and Local bodies	Pvt. Aided	Pvt. Unaided	Un-recognised	Total
Marathi	173,960	298,672	16,369	344	489,345
English	664	6,023	43,062	2,085	51,834
Hindi	0	0	0	0	0
Urdu	1,005	1,508	818	0	3,331
Bangali	0	0	0	0	0
Gujrati	0	0	0	0	0
Kannada	0	0	0	0	0
Sindhi	0	0	0	0	0
Tamil	0	0	0	0	0
Telgu	0	0	0	0	0
<b>Total</b>	<b>175,629</b>	<b>306,203</b>	<b>60,249</b>	<b>2,429</b>	<b>544,510</b>
School size (Distribution of schools by Enrolment)	Govt. and Local bodies	Pvt. Aided	Pvt. Unaided	Un-recognised	Total
Less than 10	296	0	5	3	304
11-20	595	0	11	7	613
21-30	466	1	19	4	490
31-60	500	22	45	18	585
61-150	644	151	117	8	920
More than 150	304	484	133	3	924

## 6- Gender Gap in Enrolment (in %)

Indicator	Primary (1-5)	Upper Primary (6-8)	Secondary (9-10)	Higher Secondary (11-12)	Elementry (1-8)	All (Class 1-12)
<b>All Social Groups</b>	<b>6.55</b>	<b>8.98</b>	<b>9.99</b>	<b>9.08</b>	<b>7.49</b>	<b>8.13</b>
General	7.03	9.54	9.99	7.88	8.02	8.35
Schedule Castes (SC)	4.21	8.13	8.16	9.55	5.75	6.60
Schedule Tribes (ST)	5.29	12.59	25.99	19.10	7.54	11.17
Other Backward Classes (OBC)	6.70	8.18	10.17	20.06	8.42	9.85
Muslim	7.21	9.54	12.68	3.44	8.06	8.45
Nomadic Tribes (NT)	6.22	8.60	11.74	17.47	7.12	8.98
Vimukat Jatis (VJ)	4.78	7.18	11.06	16.94	5.63	7.30
Special Backward Classes (SBC)	10.50	5.78	0.96	0.96	8.42	9.85
Bouddhist Minority	3.82	11.41	8.98	13.02	6.44	7.79
Parshi Minority	33.33	13.51	3.23	0.00	22.86	15.04
Christan Minority	9.46	8.47	19.23	19.15	9.18	12.42
Sikh Minority	17.07	26.67	28.57	20.00	21.13	21.74
Jain Minority	-1.21	14.06	23.94	9.59	3.90	8.45
B. P. L.	7.30	2.29	-9.59	7.10	5.45	3.22
Children with Special Needs (C.W.S.N.)	19.97	15.95	15.20	0.00	9.18	18.25
No. of clusters having gender gap > 10 %	37	65	91	43	38	44
No. of Block having gender gap > 10 %	1	4	4	6	2	2

## 7- Teacher

(Norms as specified in the schedule under section 19 and 23 of the RTE Act)

Indicators	Govt. and Local bodies	Pvt. Aided	Pvt. Unaided	Un-recognised	Total
Number of Teachers	Male	5,181	6,085	819	12,119
	Female	4,374	2,833	1,603	8,965
	<b>Total</b>	<b>9,555</b>	<b>8,918</b>	<b>2,422</b>	<b>21,084</b>
Percentage of female teachers to total teachers	45.8	31.8	66.2	82.0	42.5
Schools without a female teacher	<b>Number</b>	<b>908</b>	<b>98</b>	<b>16</b>	<b>1,022</b>
	%	32.4	14.9	4.8	26.6

## 7.1- Mediumwise Teacher

Medium	Govt. and Local bodies	Pvt. Aided	Pvt. Unaided	Un-recognised	Total
Marathi	9,479	8,722	642	33	18,876
English	30	149	1,721	156	2,056
Hindi	0	0	0	0	0
Urdu	46	47	59	0	152
Bangali	0	0	0	0	0
Gujrati	0	0	0	0	0
Kannada	0	0	0	0	0
Sindhi	0	0	0	0	0
Tamil	0	0	0	0	0
Telgu	0	0	0	0	0
<b>Total</b>	<b>9,555</b>	<b>8,918</b>	<b>2,422</b>	<b>189</b>	<b>21,084</b>

## 7.2- Castewise Teacher

Caste	Govt. and Local bodies	Pvt. Aided	Pvt. Unaided	Un-recognised	Total
All	9,555	8,918	2,422	189	21,084
Genral	4,291	4,369	1,510	124	10,294
SC	1,288	1,112	236	17	2,653
ST	651	513	51	6	1,221
OBC	1,690	1,442	338	18	3,488
VJ	702	534	99	14	1,349
NT	337	263	31	0	631
SBC	182	165	21	3	371
NT-B	77	105	9	0	191
NT-C	106	28	28	0	162
NT-D	68	4	4	0	76

Indicators		Govt. and Local bodies	Pvt. Aided	Pvt. Unaided	Un-recognised	Total
Schools with single teacher	Number	83	2	1	2	88
	%	3.0	0.3	0.3	4.7	2.3
PTR	Local Body-Only	Primary Section	Upper Primary Section	Secondary Section	Elementry Section	All (Class 1-12)
Pupil Teacher Ratio	15	26	27	18	26	26

Indicators		Govt. and Local bodies	Pvt. Aided	Pvt. Unaided	Un-recognised	Total
Primary schools having PTR more than 30	Number	160	49	28	0	237
	%	5.7	48.0	13.0	0.0	7.5
Upper Primary having PTR more than 35	Number	17	128	22	0	167
	%	1.7	22.0	8.6	0.0	9.2
Trained /Untrained Teacher	Primary Section	Upper Primary Section	Secondary Section	Higher Secondary Section	Elementry Section	All (Class 1-12)
Teacher All	8,833	5,552	5,367	1,332	14,385	21,084
Trained Teacher Number	8,746	5,499	5,303	1,291	14,245	20,839
%	99.0	99.0	98.8	96.9	99.0	98.8
Untrained Teacher All Number	87	53	64	41	140	245
%	1.0	1.0	1.2	3.1	1.0	1.2

## 8-Efficiency indicators

### 8.1 Annual Average Drop-out Rate

Social Groups	Primary			UpperPrimary		
	Boys	Girls	Total	Boys	Girls	Total
<b>All Social Groups</b>	2.19	2.10	2.15	1.04	1.83	1.40
<b>General</b>	1.49	1.15	1.33	2.08	2.77	2.39
Schedule Castes (SC)	2.06	2.54	2.29	1.01	3.43	2.14
Schedule Tribes (ST)	17.35	13.29	15.49	23.20	19.86	21.77
Other Backward Classes (OBC)	2.53	2.85	2.68	-2.35	-1.67	-2.03
Vimukat Jatis (VJ)	11.17	10.69	10.94	13.20	14.74	13.92
Nomadic Tribes (NT)	9.22	8.61	8.94	4.55	8.88	6.58
Special Backward Classes (SBC)	28.80	19.82	25.07	26.01	18.48	22.64
Muslim	2.09	3.47	2.74	0.47	6.46	3.27

### 8.2 Transition Rate

Social Groups	Primary			UpperPrimary		
	Boys	Girls	Total	Boys	Girls	Total
<b>All Social Groups</b>	98.2	97.8	98.0	97.5	97.6	97.6
General	98.2	99.2	98.6	96.5	96.7	96.6
Schedule Castes (SC)	98.5	98.5	98.5	96.7	95.1	95.9
Schedule Tribes (ST)	78.4	74.7	76.6	78.1	75.3	77.0
Other Backward Classes (OBC)	98.9	96.3	97.7	101.0	101.0	101.2
VJ / NT	106.7	106.4	106.6	113.7	116.6	115.0
Special Backward Classes (SBC)	95.8	124.7	108.8	92.9	83.1	88.5
Muslim	97.5	93.0	95.4	98.1	94.0	96.2

### 8.3 Gender Parity Index (GPI)

Social Groups	Primary Section	Upper Primary Section	Secondary Section	Higher Secondary Section	Elementary Section	All (Class 1-12)
<b>All Social Groups</b>	0.88	0.84	0.82	0.83	0.86	0.85
General	0.87	0.83	0.83	0.85	0.85	0.85
Schedule Castes (SC)	0.92	0.85	0.85	0.85	0.89	0.88
Schedule Tribes (ST)	0.90	0.78	0.59	0.68	0.86	0.80
Other Backward Classes (OBC)	0.87	0.85	0.82	0.80	0.86	0.85
Vimukat Jatis (VJ)	0.91	0.87	0.80	0.71	0.89	0.86
Nomadic Tribes (NT)	0.88	0.84	0.79	0.70	0.87	0.84
Special Backward Classes (SBC)	0.81	0.89	0.98	0.67	0.84	0.82
Muslim	0.87	0.83	0.77	0.93	0.85	0.84

### 8.4 Retention Rate

Social Groups	Primary			UpperPrimary		
	Boys	Girls	Total	Boys	Girls	Total
<b>All Social Groups</b>	98.70	93.41	96.19	97.20	97.20	96.81
General	99.63	92.82	96.41	95.64	95.64	95.43
Schedule Castes (SC)	95.66	90.40	93.12	94.87	94.09	94.51
Schedule Tribes (ST)	69.21	75.97	72.24	62.32	59.44	61.15
Other Backward Classes (OBC)	69.21	75.97	72.24	103.62	100.90	102.35
Muslim	113.96	91.39	96.19	101.15	89.66	96.81