



District Profile

Based on Unified District Information System for Education (UDISE), 2012-13

District : Sindhudurg

1 – Demographic (Source : Census of India,2011)

	Male	Female	Person	Sex Ratio	Child Sex Ratio (0-6 years)
Population	416,695	432,173	848,868		
Literacy rate	93.7	79.7	86.5	1037	910

2- Number of Schools by Management and Category

Indicator (Number of schools)	Govt. and Local bodies	Pvt. Aided	Pvt. Unaided	Un-recognised	Total
Primary (1-4)	935	20	17	9	981
Primary with Upper Primary (1-7)	539	6	9	2	556
Pri,Upper,Secondary with Hsecondary (1 to 12)	0	0	3	0	3
Only Upper Primary	0	0	0	0	0
Upper,Secondary with Hsecondary (5 to 12)	1	67	1	0	69
Primary,Upperprimary with Secondary(1 to 10)	0	0	12	1	13
Upperprimary with Secondary(5 to 10)	0	60	0	0	60
Secondary Only (8 to 10)	0	54	7	5	66
Secondary with HSecondary(8 to 12)	0	13	1	0	14
Higher Secondary with college attached (11 to 12)	1	5	4	1	11
Total	1,476	225	54	18	1,773
Having Primary level classes	1,474	26	41	12	1,553
Having Upper Primary level classes	540	200	33	8	781
Having Secondary level classes	1	194	24	6	225
Having HigherSecondary level classes	2	85	9	1	97
Ratio of Primary to Upper Primary schools	State average				1.6
	District				2.0

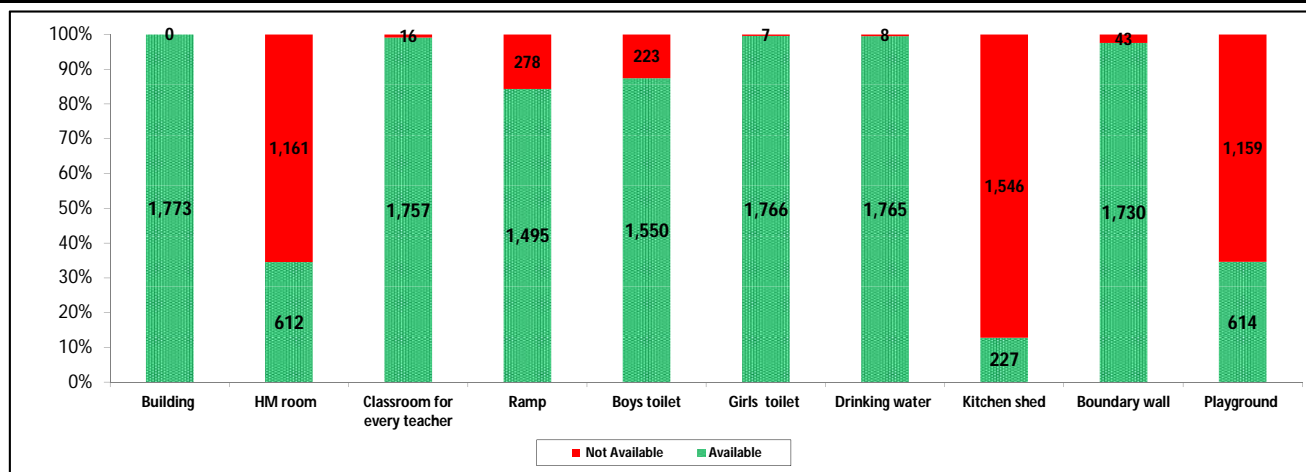
3 - Number of Mediumwise Schools by Management .

Indicator (Number of Mediumwise schools)	Govt. and Local bodies	Pvt. Aided	Pvt. Unaided	Un-recognised	Total
Marathi	1,450	221	14	6	1,691
English	0	1	37	11	49
Hindi	0	0	0	0	0
Urdu	26	3	3	1	33
Bangali	0	0	0	0	0
Gujrati	0	0	0	0	0
Kannada	0	0	0	0	0
Sindhi	0	0	0	0	0
Tamil	0	0	0	0	0
Telgu	0	0	0	0	0
Total	1,476	225	54	18	1,773

4 – Infrastructure

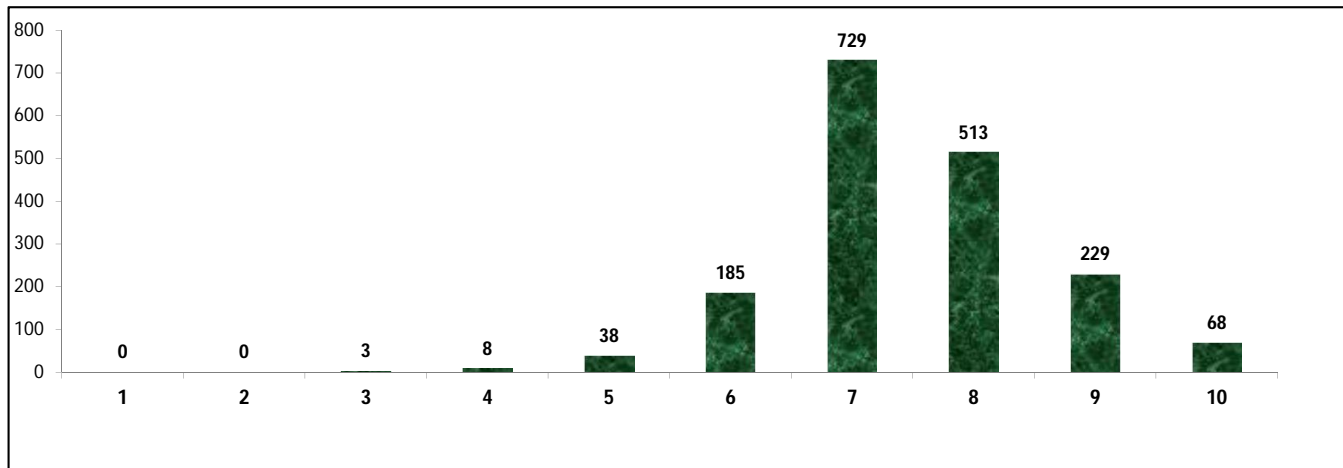
(Norms as specified in the schedule under section 19 of "The right of children to free and compulsory education act, 2009"(RTE Act))

Status of Infrastructure Facilities in Schools (Numbers, All schools)



Indicator : Schools with infrastructure facilities available		Govt. and Local bodies	Pvt. Aided	Pvt. Unaided	Un-recognised	Total
Total Schools		1476	225	54	18	1773
1. Building	Number	1,476	225	54	18	1,773
	%	100.0	100.0	100.0	100.0	100.0
2. Office-cum-store-cum-HM room	Number	465	106	32	9	612
	%	31.5	47.1	59.3	50.0	34.5
3. One classroom for every teacher	Number	1,460	225	54	18	1,757
	%	98.9	100.0	100.0	100.0	99.1
4. Ramp	Number	1,412	63	18	2	1,495
	%	95.7	28.0	33.3	11.1	84.3
5. Separate toilet for boys	Number	1,294	193	46	17	1,550
	%	87.7	85.8	85.2	94.4	87.4
6. Separate toilet for girls	Number	1,475	222	51	18	1,766
	%	99.9	98.7	94.4	100.0	99.6
7. Drinking water facility	Number	1,468	225	54	18	1,765
	%	99.5	100.0	100.0	100.0	99.5
8. Kitchen shed	Number	189	37	1	0	227
	%	12.8	16.4	1.9	0.0	12.8
9. Boundary wall	Number	1,455	209	50	16	1,730
	%	98.6	92.9	92.6	88.9	97.6
10. Playground	Number	387	171	42	14	614
	%	26.2	76.0	77.8	77.8	34.6
Indicators		Govt. and Local bodies	Pvt. Aided	Pvt. Unaided	Un-recognised	Total
Number of classrooms(1 to 8)		4,450	1,081	302	63	5,896
Number of classrooms(9 to 10)		4	501	41	10	556
Number of classrooms(11 to 12)		7	178	4	4	193
Student Classroom Ratio (SCR) Primary		11	UpperPri.	20	Elementry	17
Primary schools having SCR more than 30	Number	13	7	5	1	26
	%	0.9	3.1	9.3	5.6	1.5
Upper Primary. schools having SCR more than 35	Number	4	116	7	0	127
	%	0.3	51.6	13.0	0.0	7.2
Schools fulfilling "10" infrastructure norms for building under RTE	Number	62	5	1	0	68
	%	4.2	2.2	1.9	0.0	3.8

Number of schools by number of infrastructure elements complinace for building under RTE



5- Enrolment

Number of students enrolled in		Govt. and Local bodies	Pvt. Aided	Pvt. Unaided	Un-recognised	Total
Primary Classes (1-5)	Boys	21,851	4,104	4,072	434	30,461
	Girls	21,399	3,555	2,788	299	28,041
	Total	43,250	7,659	6,860	733	58,502
Upper Primary Classes (6-8)	Boys	6,537	13,491	1,430	75	21,533
	Girls	6,519	12,394	937	60	19,910
	Total	13,056	25,885	2,367	135	41,443
Secondary Classes (9-10)	Boys	68	13,981	904	92	15,045
	Girls	71	12,941	627	101	13,740
	Total	139	26,922	1,531	193	28,785
Higher Secondary Classes (11-12)	Boys	147	10,589	251	121	11,108
	Girls	17	10,391	183	102	10,693
	Total	164	20,980	434	223	21,801
Elementary Classes (1-8)	Boys	28,388	17,595	5,502	509	51,994
	Girls	27,918	15,949	3,725	359	47,951
	Total	56,306	33,544	9,227	868	99,945
All Classes (1-12)	Boys	28,603	42,165	6,657	722	78,147
	Girls	28,006	39,281	4,535	562	72,384
	Total	56,609	81,446	11,192	1,284	150,531

5.1- Castewise Enrolment

Indicator	Primary (1-5)	Upper Primary (6-8)	Secondary (9-10)	Higher Sec. (11-12)	Elementry (1-8)	All (Class 1-12)
All Social Groups	58,502	41,443	28,785	21,801	99,945	150,531
General	31,991	23,253	16,489	13,167	55,244	84,900
Schedule Castes (SC)	4,157	3,043	2,118	1,495	7,200	10,813
Schedule Tribes (ST)	589	314	216	123	903	1,242
Other Backward Classes (OBC)	21,765	14,833	9,962	7,016	36,598	53,576
Muslim	2,413	1,411	935	395	3,824	5,154
Nomadic Tribes (NT)	3,604	2,186	1,197	839	5,790	7,826
Vimukat Jatis (VJ)	299	125	53	29	424	506
Special Backward Classes (SBC)	535	332	239	280	867	1,386
Bouddhist Minority	1,223	648	312	177	1,871	2,360
Parshi Minority	9	12	12	41	21	74
Christan Minority	1,008	736	465	362	1,744	2,571
Sikh Minority	5	2	4	0	7	11
Jain Minority	51	26	21	12	77	110
B. P. L.	13,129	7,988	3,825	2,195	21,117	27,137
Children with Special Needs (C.W.S.N.)	2,316	1,195	442	36	3,511	3,989

5.2- Mediumwise Enrolment

Indicator (Number of Mediumwise schools)	Govt. and Local bodies	Pvt. Aided	Pvt. Unaided	Un-recognised	Total
Marathi	55,608	80,554	1,537	541	138,240
English	0	340	9,394	714	10,448
Hindi	0	0	0	0	0
Urdu	1,001	552	261	29	1,843
Bangali	0	0	0	0	0
Gujrati	0	0	0	0	0
Kannada	0	0	0	0	0
Sindhi	0	0	0	0	0
Tamil	0	0	0	0	0
Telgu	0	0	0	0	0
Total	56,609	81,446	11,192	1,284	150,531
School size (Distribution of schools by Enrolment)	Govt. and Local bodies	Pvt. Aided	Pvt. Unaided	Un-recognised	Total
Less than 10	315	4	3	0	322
11-20	364	5	0	2	371
21-30	228	2	1	2	233
31-60	234	9	11	6	260
61-150	307	56	17	6	386
More than 150	28	149	22	2	201

6- Gender Gap in Enrolment (in %)

Indicator	Primary (1-5)	Upper Primary (6-8)	Secondary (9-10)	Higher Secondary (11-12)	Elementry (1-8)	All (Class 1-12)
All Social Groups	4.14	3.92	4.53	1.90	4.05	3.83
General	4.06	4.30	4.07	2.32	4.16	3.86
Schedule Castes (SC)	5.51	2.00	6.89	-2.07	4.03	3.75
Schedule Tribes (ST)	1.19	0.64	0.00	7.32	1.00	1.45
Other Backward Classes (OBC)	4.07	3.78	4.90	-4.29	6.81	3.90
Muslim	3.77	2.06	0.11	13.42	3.14	3.38
Nomadic Tribes (NT)	4.05	7.59	7.27	6.56	5.39	5.80
Vimukat Jatis (VJ)	-0.33	-4.00	-9.43	10.34	-1.42	-1.58
Special Backward Classes (SBC)	6.92	6.63	2.93	2.93	6.81	3.90
Bouddhist Minority	4.33	-1.23	13.46	1.69	2.41	3.81
Parshi Minority	11.11	-50.00	-16.67	-7.32	-23.81	-13.51
Christan Minority	5.75	8.97	5.81	-11.60	7.11	4.24
Sikh Minority	100.00	100.00	50.00	0.00	100.00	81.82
Jain Minority	-21.57	30.77	33.33	-16.67	-3.90	1.82
B. P. L.	3.44	1.78	-4.31	1.78	2.81	1.72
Children with Special Needs (C.W.S.N.)	17.96	16.15	17.65	-11.11	7.11	17.12
No. of clusters having gender gap > 10 %	20	20	21	12	10	11
No. of Block having gender gap > 10 %	0	0	0	0	0	0

7- Teacher

(Norms as specified in the schedule under section 19 and 23 of the RTE Act)

Indicators	Govt. and Local bodies	Pvt. Aided	Pvt. Unaided	Un-recognised	Total
Number of Teachers	Male	2,219	1,819	152	4,211
	Female	2,214	769	291	3,330
	Total	4,433	2,588	443	7,541
Percentage of female teachers to total teachers	49.9	29.7	65.7	72.7	44.2
Schools without a female teacher	Number	358	23	5	388
	%	24.3	10.2	9.3	21.9

7.1- Mediumwise Teacher

Medium	Govt. and Local bodies	Pvt. Aided	Pvt. Unaided	Un-recognised	Total
Marathi	4,361	2,545	70	24	7,000
English	0	23	359	49	431
Hindi	0	0	0	0	0
Urdu	72	20	14	4	110
Bangali	0	0	0	0	0
Gujrati	0	0	0	0	0
Kannada	0	0	0	0	0
Sindhi	0	0	0	0	0
Tamil	0	0	0	0	0
Telgu	0	0	0	0	0
Total	4,433	2,588	443	77	7,541

7.2- Castewise Teacher

Caste	Govt. and Local bodies	Pvt. Aided	Pvt. Unaided	Un-recognised	Total	
All	4,433	2,588	443	77	7,541	
Genral	2,036	1,291	269	46	3,642	
SC	530	354	22	10	916	
ST	270	103	14	1	388	
OBC	932	506	74	14	1,526	
VJ	388	198	13	3	602	
NT	100	35	1	0	136	
SBC	128	27	2	1	158	
NT-B	13	9	1	0	23	
NT-C	6	0	0	0	6	
NT-D	5	0	0	0	5	
Indicators		Govt. and Local bodies	Pvt. Aided	Pvt. Unaided	Un-recognised	Total
Schools with single teacher	Number	28	0	2	0	30
	%	1.9	0.0	3.7	0.0	1.7
PTR	Local Body-Only	Primary Section	Upper Primary Section	Secondary Section	Elementry Section	All (Class 1-12)
Pupil Teacher Ratio	22	17	16	27	17	20
Indicators		Govt. and Local bodies	Pvt. Aided	Pvt. Unaided	Un-recognised	Total
Primary schools having PTR more than 30	Number	22	6	3	1	32
	%	1.5	23.1	7.3	8.3	2.1
Upper Primary having PTR more than 35	Number	2	32	4	0	38
	%	0.4	16.0	12.1	0.0	4.9
Trained /Untrained Teacher	Primary Section	Upper Primary Section	Secondary Section	Higher Secondary Section	Elementry Section	All (Class 1-12)
Teacher All	3,465	2,516	1,063	497	5,981	7,541
Trained Teacher Number	3,424	2,489	1,035	470	5,913	7,418
%	98.8	98.9	97.4	94.6	98.9	98.4
Untrained Teacher All Number	41	27	28	27	68	123
%	1.2	1.1	2.6	5.4	1.1	1.6

8-Efficiency indicators

8.1 Annual Average Drop-out Rate

Social Groups	Primary			UpperPrimary		
	Boys	Girls	Total	Boys	Girls	Total
All Social Groups	0.58	0.70	0.64	0.91	0.72	0.82
General	-0.90	-0.23	-0.58	0.41	-0.24	0.10
Schedule Castes (SC)	-0.22	-1.39	-0.77	3.00	1.52	2.28
Schedule Tribes (ST)	22.00	15.52	18.89	35.77	32.47	34.17
Other Backward Classes (OBC)	2.14	1.96	2.05	0.16	1.03	0.58
Vimukat Jatis (VJ)	-2.86	-31.25	-16.42	36.84	-1.56	21.38
Nomadic Tribes (NT)	5.00	10.26	7.62	8.77	12.78	10.67
Special Backward Classes (SBC)	9.81	-2.76	4.71	14.90	11.93	13.54
Muslim	-2.45	0.96	-0.75	5.14	0.86	3.09

8.2 Transition Rate

Social Groups	Primary			UpperPrimary		
	Boys	Girls	Total	Boys	Girls	Total
All Social Groups	99.9	98.5	99.2	97.8	98.3	98.1
General	103.2	100.6	102.0	99.7	100.7	100.2
Schedule Castes (SC)	100.8	99.2	100.1	97.2	96.6	96.9
Schedule Tribes (ST)	86.5	89.2	87.8	69.3	64.0	66.7
Other Backward Classes (OBC)	95.1	95.4	95.2	95.9	95.9	96.0
VJ / NT	104.4	109.7	107.0	121.3	123.8	122.4
Special Backward Classes (SBC)	123.9	130.0	126.5	96.9	88.9	93.3
Muslim	95.2	89.4	92.2	89.6	106.1	97.2

8.3 Gender Parity Index (GPI)

Social Groups	Primary Section	Upper Primary Section	Secondary Section	Higher Secondary Section	Elementary Section	All (Class 1-12)
All Social Groups	0.92	0.92	0.91	0.96	0.92	0.93
General	0.92	0.92	0.92	0.95	0.92	0.93
Schedule Castes (SC)	0.90	0.96	0.87	0.87	0.92	0.93
Schedule Tribes (ST)	0.98	0.99	1.00	0.86	0.98	0.97
Other Backward Classes (OBC)	0.92	0.93	0.91	0.96	0.92	0.93
Vimukat Jatis (VJ)	1.01	1.08	1.21	0.81	1.03	1.03
Nomadic Tribes (NT)	0.92	0.86	0.86	0.88	0.90	0.89
Special Backward Classes (SBC)	0.87	0.88	0.94	1.09	0.87	0.93
Muslim	0.93	0.96	1.00	0.76	0.94	0.93

8.4 Retention Rate

Social Groups	Primary			UpperPrimary		
	Boys	Girls	Total	Boys	Girls	Total
All Social Groups	105.09	101.72	103.47	97.56	97.56	97.23
General	112.00	109.23	110.67	98.83	98.83	99.01
Schedule Castes (SC)	109.98	84.88	97.68	99.04	96.19	97.64
Schedule Tribes (ST)	85.33	97.06	90.91	77.22	63.95	70.30
Other Backward Classes (OBC)	85.33	97.06	90.91	95.82	94.75	95.30
Muslim	97.55	107.27	103.47	94.14	103.42	97.23