



शिक्षणाचा अधिकार

सर्व शिक्षा अभियान  
सारे शिक्षक, पुढे जाऊया

# District Profile

Based on Unified District Information System for Education (UDISE), 2012-13

District : Solapur

1 – Demographic (Source : Census of India,2011)

	Male	Female	Person	Sex Ratio	Child Sex Ratio (0-6 years)
Population	2,233,778	2,081,749	4,315,527		
Literacy rate	86.4	68.6	77.7	932	872

2- Number of Schools by Management and Category

Indicator (Number of schools )	Govt. and Local bodies	Pvt. Aided	Pvt. Unaided	Un-recognised	Total
Primary (1-4)	2,138	178	97	29	2,442
Primary with Upper Primary (1-7)	870	218	70	3	1,161
Pri,Upper,Secondary with Hsecondary (1 to 12)	1	1	5	0	7
Only Upper Primary	0	1	0	1	2
Upper,Secondary with Hsecondary (5 to 12)	2	209	19	1	231
Primary,Upperprimary with Secondary(1 to 10)	1	2	28	1	32
Upperprimary with Secondary(5 to 10)	4	331	45	0	380
Secondary Only (8 to 10)	5	109	104	2	220
Secondary with HSecondary(8 to 12)	1	28	11	0	40
Higher Secondary with college attached (11 to 12)	0	23	12	1	36
<b>Total</b>	<b>3,022</b>	<b>1,100</b>	<b>391</b>	<b>38</b>	<b>4,551</b>
Having Primary level classes	3,010	399	200	33	3,642
Having Upper Primary level classes	884	899	282	8	2,073
Having Secondary level classes	14	680	212	4	910
Having HigherSecondary level classes	4	261	47	2	314
Ratio of Primary to Upper Primary schools	State average				1.6
	District				1.8

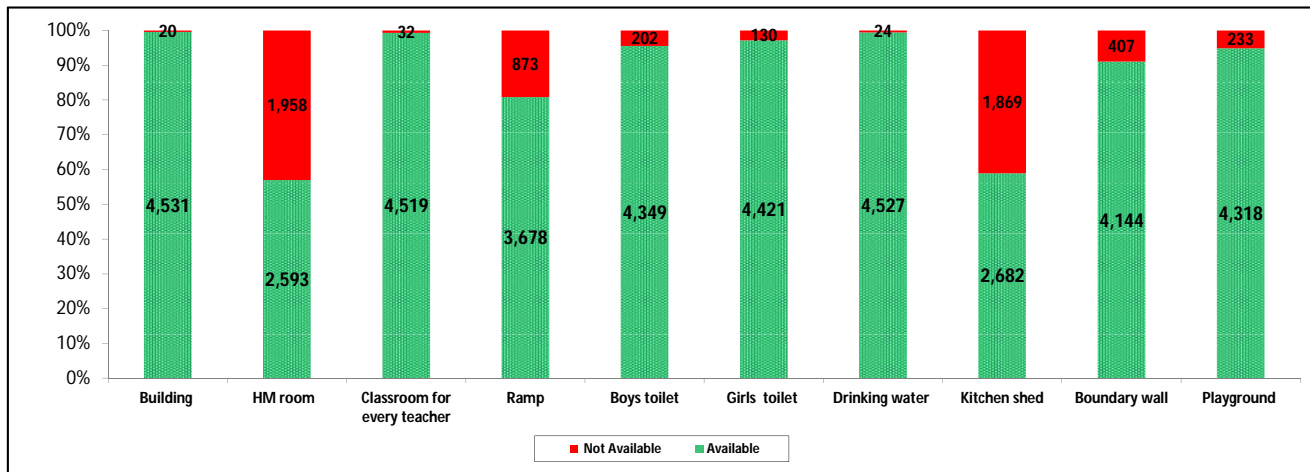
3 - Number of Mediumwise Schools by Management .

Indicator (Number of Mediumwise schools )	Govt. and Local bodies	Pvt. Aided	Pvt. Unaided	Un-recognised	Total
Marathi	2,840	1,021	248	11	4,120
English	1	5	123	26	155
Hindi	1	2	0	0	3
Urdu	87	55	17	1	160
Bangali	0	0	0	0	0
Gujrati	0	0	0	0	0
Kannada	89	17	3	0	109
Sindhi	0	0	0	0	0
Tamil	0	0	0	0	0
Telgu	4	0	0	0	4
<b>Total</b>	<b>3,022</b>	<b>1,100</b>	<b>391</b>	<b>38</b>	<b>4,551</b>

## 4 – Infrastructure

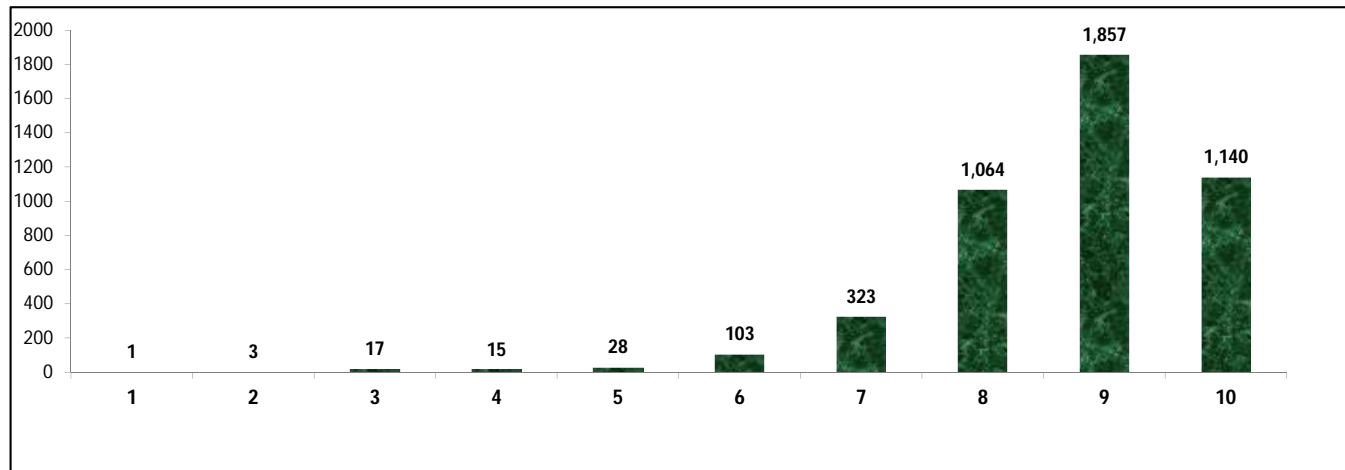
(Norms as specified in the schedule under section 19 of "The right of children to free and compulsory education act, 2009" ( RTE Act ) )

### Status of Infrastructure Facilities in Schools (Numbers, All schools)



Indicator : Schools with infrastructure facilities available		Govt. and Local bodies	Pvt. Aided	Pvt. Unaided	Un-recognised	Total
<b>Total Schools</b>		<b>3022</b>	<b>1100</b>	<b>391</b>	<b>38</b>	<b>4551</b>
1. Building	Number	3,003	1,099	391	38	4,531
	%	99.4	99.9	100.0	100.0	99.6
2. Office-cum-store-cum-HM room	Number	1,375	848	334	36	2,593
	%	45.5	77.1	85.4	94.7	57.0
3. One classroom for every teacher	Number	2,996	1,096	389	38	4,519
	%	99.1	99.6	99.5	100.0	99.3
4. Ramp	Number	2,882	636	144	16	3,678
	%	95.4	57.8	36.8	42.1	80.8
5. Separate toilet for boys	Number	2,921	1,018	375	35	4,349
	%	96.7	92.5	95.9	92.1	95.6
6. Separate toilet for girls	Number	2,932	1,072	382	35	4,421
	%	97.0	97.5	97.7	92.1	97.1
7. Drinking water facility	Number	3,000	1,098	391	38	4,527
	%	99.3	99.8	100.0	100.0	99.5
8. Kitchen shed	Number	2,340	332	9	1	2,682
	%	77.4	30.2	2.3	2.6	58.9
9. Boundary wall	Number	2,857	932	324	31	4,144
	%	94.5	84.7	82.9	81.6	91.1
10. Playground	Number	2,904	1,010	368	36	4,318
	%	96.1	91.8	94.1	94.7	94.9
<b>Indicators</b>		<b>Govt. and Local bodies</b>	<b>Pvt. Aided</b>	<b>Pvt. Unaided</b>	<b>Un-recognised</b>	<b>Total</b>
Number of classrooms(1 to 8)		10,950	7,066	1,823	170	20,009
Number of classrooms(9 to 10)		50	2,188	443	3	2,684
Number of classrooms(11 to 12)		18	1,192	4	4	1,218
<b>Student Classroom Ratio (SCR) Primary</b>		<b>25</b>	<b>UpperPri.</b>	<b>38</b>	<b>Elementry</b>	<b>33</b>
Primary schools having SCR more than 30	Number	271	120	30	5	426
	%	9.0	10.9	7.7	13.2	9.4
Upper Primary. schools having SCR more than 35	Number	21	542	80	1	644
	%	0.7	49.3	20.5	2.6	14.2
<b>Schools fulfilling "10" infrastructure norms for building under RTE</b>	Number	<b>965</b>	<b>171</b>	<b>4</b>	<b>0</b>	<b>1,140</b>
	%	31.9	15.5	1.0	0.0	25.0

**Number of schools by number of infrastructure elements complinace for building under RTE**



**5- Enrolment**

Number of students enrolled in		Govt. and Local bodies	Pvt. Aided	Pvt. Unaided	Un-recognised	Total
Primary Classes (1-5)	Boys	110,294	83,517	25,393	1,649	220,853
	Girls	106,065	73,152	16,210	919	196,346
	<b>Total</b>	<b>216,359</b>	<b>156,669</b>	<b>41,603</b>	<b>2,568</b>	<b>417,199</b>
Upper Primary Classes (6-8)	Boys	19,603	98,895	12,055	139	130,692
	Girls	20,442	83,573	8,567	117	112,699
	<b>Total</b>	<b>40,045</b>	<b>182,468</b>	<b>20,622</b>	<b>256</b>	<b>243,391</b>
Secondary Classes (9-10)	Boys	1,218	66,714	9,430	47	77,409
	Girls	794	53,550	6,774	57	61,175
	<b>Total</b>	<b>2,012</b>	<b>120,264</b>	<b>16,204</b>	<b>104</b>	<b>138,584</b>
Higher Secondary Classes (11-12)	Boys	585	45,978	3,918	80	50,561
	Girls	612	33,869	2,574	75	37,130
	<b>Total</b>	<b>1,197</b>	<b>79,847</b>	<b>6,492</b>	<b>155</b>	<b>87,691</b>
Elementary Classes (1-8)	<b>Boys</b>	<b>129,897</b>	<b>182,412</b>	<b>37,448</b>	<b>1,788</b>	<b>351,545</b>
	<b>Girls</b>	<b>126,507</b>	<b>156,725</b>	<b>24,777</b>	<b>1,036</b>	<b>309,045</b>
	<b>Total</b>	<b>256,404</b>	<b>339,137</b>	<b>62,225</b>	<b>2,824</b>	<b>660,590</b>
All Classes (1-12)	Boys	131,700	295,104	50,796	1,915	479,515
	Girls	127,913	244,144	34,125	1,168	407,350
	<b>Total</b>	<b>259,613</b>	<b>539,248</b>	<b>84,921</b>	<b>3,083</b>	<b>886,865</b>

**5.1- Castewise Enrolment**

Indicator	Primary (1-5)	Upper Primary (6-8)	Secondary (9-10)	Higher Sec. (11-12)	Elementry (1-8)	All (Class 1-12)
<b>All Social Groups</b>	<b>417,199</b>	<b>243,391</b>	<b>138,584</b>	<b>87,691</b>	<b>660,590</b>	<b>886,865</b>
<b>General</b>	173,621	103,886	62,500	41,104	277,507	381,111
<b>Schedule Castes (SC)</b>	70,359	40,418	21,635	12,483	110,777	144,895
<b>Schedule Tribes (ST)</b>	10,401	4,878	2,343	937	15,279	18,559
<b>Other Backward Classes (OBC)</b>	162,818	94,209	52,106	33,167	257,027	342,300
<b>Muslim</b>	50,178	26,105	13,274	6,072	76,283	95,629
<b>Nomadic Tribes (NT)</b>	59,161	34,775	18,403	10,999	93,936	123,338
<b>Vimukat Jatis (VJ)</b>	24,089	12,010	5,974	3,720	36,099	45,793
<b>Special Backward Classes (SBC)</b>	16,492	10,042	5,841	3,819	26,534	36,194
<b>Bouddhist Minority</b>	577	281	107	175	858	1,140
<b>Parshi Minority</b>	69	39	19	18	108	145
<b>Christan Minority</b>	370	273	152	60	643	855
<b>Sikh Minority</b>	82	54	37	2	136	175
<b>Jain Minority</b>	1,830	842	584	312	2,672	3,568
<b>B. P. L.</b>	39,447	16,184	6,767	3,585	55,631	65,983
<b>Children with Special Needs (C.W.S.N.)</b>	5,329	2,283	542	302	7,612	8,456

## 5.2- Mediumwise Enrolment

Indicator (Number of Mediumwise schools )	Govt. and Local bodies	Pvt. Aided	Pvt. Unaided	Un-recognised	Total
Marathi	241,882	508,271	44,913	1,228	796,294
English	871	4,472	37,516	1,783	44,642
Hindi	378	352	0	0	730
Urdu	7,375	24,108	2,293	72	33,848
Bangali	0	0	0	0	0
Gujrati	0	0	0	0	0
Kannada	8,936	2,045	199	0	11,180
Sindhi	0	0	0	0	0
Tamil	0	0	0	0	0
Telgu	171	0	0	0	171
<b>Total</b>	<b>259,613</b>	<b>539,248</b>	<b>84,921</b>	<b>3,083</b>	<b>886,865</b>
School size (Distribution of schools by Enrolment)	Govt. and Local bodies	Pvt. Aided	Pvt. Unaided	Un-recognised	Total
Less than 10	46	2	2	1	51
11-20	455	8	13	4	480
21-30	549	18	8	3	578
31-60	736	37	49	7	829
61-150	636	138	150	20	944
More than 150	600	896	169	3	1,668

## 6- Gender Gap in Enrolment (in %)

Indicator	Primary (1-5)	Upper Primary (6-8)	Secondary (9-10)	Higher Secondary (11-12)	Elementry (1-8)	All (Class 1-12)
<b>All Social Groups</b>	<b>5.87</b>	<b>7.39</b>	<b>11.71</b>	<b>15.32</b>	<b>6.43</b>	<b>8.14</b>
General	7.02	7.85	10.25	12.74	7.33	8.39
Schedule Castes (SC)	3.15	5.46	12.87	19.03	3.99	6.61
Schedule Tribes (ST)	7.95	13.20	23.26	18.25	9.63	11.78
Other Backward Classes (OBC)	5.70	7.42	12.47	17.94	5.09	7.67
Muslim	0.67	1.42	0.95	2.80	0.93	1.05
Nomadic Tribes (NT)	5.96	8.85	14.38	23.39	7.03	9.59
Vimukat Jatis (VJ)	5.77	10.36	21.73	27.47	7.30	10.82
Special Backward Classes (SBC)	4.50	6.05	12.69	12.69	5.09	7.67
Bouddhist Minority	5.03	8.19	0.93	38.29	6.06	10.53
Parshi Minority	4.35	17.95	-5.26	-11.11	9.26	4.83
Christan Minority	12.97	-1.83	11.84	23.33	6.69	8.77
Sikh Minority	9.76	3.70	13.51	0.00	7.35	8.57
Jain Minority	9.18	3.33	5.14	7.69	7.34	7.01
B. P. L.	4.71	4.54	6.40	8.62	4.66	5.05
Children with Special Needs (C.W.S.N.)	23.02	19.84	25.46	31.79	6.69	22.63
No. of clusters having gender gap > 10 %	37	70	127	94	39	68
No. of Block having gender gap > 10 %	0	1	11	12	1	2

## 7- Teacher

(Norms as specified in the schedule under section 19 and 23 of the RTE Act)

Indicators	Govt. and Local bodies	Pvt. Aided	Pvt. Unaided	Un-recognised	Total
Number of Teachers	Male	7,605	10,672	1,508	19,846
	Female	4,038	4,280	1,311	9,727
	<b>Total</b>	<b>11,643</b>	<b>14,952</b>	<b>2,819</b>	<b>29,573</b>
Percentage of female teachers to total teachers	34.7	28.6	46.5	61.6	32.9
Schools without a female teacher	<b>Number</b>	<b>1,328</b>	<b>215</b>	<b>75</b>	<b>1,620</b>
	%	43.9	19.5	19.2	35.6

## 7.1- Mediumwise Teacher

Medium	Govt. and Local bodies	Pvt. Aided	Pvt. Unaided	Un-recognised	Total
Marathi	10,788	14,058	1,583	59	26,488
English	23	134	1,140	97	1,394
Hindi	19	13	0	0	32
Urdu	373	632	83	3	1,091
Bangali	0	0	0	0	0
Gujrati	0	0	0	0	0
Kannada	430	115	13	0	558
Sindhi	0	0	0	0	0
Tamil	0	0	0	0	0
Telgu	10	0	0	0	10
<b>Total</b>	<b>11,643</b>	<b>14,952</b>	<b>2,819</b>	<b>159</b>	<b>29,573</b>

## 7.2- Castewise Teacher

Caste	Govt. and Local bodies	Pvt. Aided	Pvt. Unaided	Un-recognised	Total	
All	11,643	14,952	2,819	159	29,573	
Genral	5,126	7,789	1,448	75	14,438	
SC	1,526	1,732	312	16	3,586	
ST	656	464	77	13	1,210	
OBC	2,308	2,388	418	36	5,150	
VJ	898	953	167	4	2,022	
NT	684	794	153	6	1,637	
SBC	309	329	80	1	719	
NT-B	30	41	4	0	75	
NT-C	7	8	8	0	23	
NT-D	0	0	0	0	0	
Indicators	Govt. and Local bodies	Pvt. Aided	Pvt. Unaided	Un-recognised	Total	
Schools with single teacher	Number	55	2	4	1	62
	%	1.8	0.2	1.0	2.6	1.4
PTR	Local Body-Only	Primary Section	Upper Primary Section	Secondary Section	Elementry Section	All (Class 1-12)
Pupil Teacher Ratio	18	33	30	20	32	30
Indicators	Govt. and Local bodies	Pvt. Aided	Pvt. Unaided	Un-recognised	Total	
Primary schools having PTR more than 30	Number	316	122	37	5	480
	%	10.5	30.6	18.5	15.2	13.2
Upper Primary having PTR more than 35	Number	37	277	28	1	343
	%	4.2	30.8	9.9	12.5	16.5
Trained /Untrained Teacher	Primary Section	Upper Primary Section	Secondary Section	Higher Secondary Section	Elementry Section	All (Class 1-12)
Teacher All	12,549	8,171	6,808	2,045	20,720	29,573
Trained Teacher Number	12,438	7,989	6,683	1,973	20,427	29,083
%	99.1	97.8	98.2	96.5	98.6	98.3
Untrained Teacher All Number	111	182	125	72	293	490
%	0.9	2.2	1.8	3.5	1.4	1.7

## 8-Efficiency indicators

### 8.1 Annual Average Drop-out Rate

Social Groups	Primary			UpperPrimary		
	Boys	Girls	Total	Boys	Girls	Total
<b>All Social Groups</b>	3.56	4.12	3.82	2.82	4.67	3.69
<b>General</b>	5.75	6.93	6.30	3.97	6.01	4.92
Schedule Castes (SC)	4.39	4.39	4.39	5.36	7.12	6.20
Schedule Tribes (ST)	10.34	10.97	10.63	12.04	18.76	15.09
Other Backward Classes (OBC)	-0.21	-0.08	-0.15	-0.69	0.65	-0.06
Vimukat Jatis (VJ)	9.89	8.88	9.42	21.64	25.27	23.31
Nomadic Tribes (NT)	1.98	2.90	2.41	-2.79	-0.57	-1.76
Special Backward Classes (SBC)	5.55	6.06	5.79	7.76	14.79	11.20
Muslim	10.07	10.22	10.14	10.81	12.32	11.56

### 8.2 Transition Rate

Social Groups	Primary			UpperPrimary		
	Boys	Girls	Total	Boys	Girls	Total
<b>All Social Groups</b>	96.8	95.6	96.3	94.7	91.6	93.2
General	94.6	92.5	93.6	94.4	91.1	92.9
Schedule Castes (SC)	96.0	95.2	95.6	90.7	87.1	89.0
Schedule Tribes (ST)	87.9	84.9	86.5	82.5	67.8	75.8
Other Backward Classes (OBC)	100.4	100.1	100.3	97.6	97.6	96.6
VJ / NT	104.9	105.5	105.2	110.5	114.0	112.1
Special Backward Classes (SBC)	98.1	94.8	96.5	91.5	83.6	87.7
Muslim	87.8	86.0	86.9	85.1	79.0	82.1

### 8.3 Gender Parity Index (GPI)

Social Groups	Primary Section	Upper Primary Section	Secondary Section	Higher Secondary Section	Elementary Section	All (Class 1-12)
<b>All Social Groups</b>	0.89	0.86	0.79	0.73	0.88	0.85
General	0.87	0.85	0.85	0.77	0.86	0.85
Schedule Castes (SC)	0.94	0.90	0.77	0.77	0.92	0.88
Schedule Tribes (ST)	0.85	0.77	0.62	0.69	0.82	0.79
Other Backward Classes (OBC)	0.89	0.86	0.78	0.71	0.88	0.85
Vimukat Jatis (VJ)	0.89	0.81	0.64	0.57	0.86	0.80
Nomadic Tribes (NT)	0.89	0.84	0.75	0.62	0.87	0.83
Special Backward Classes (SBC)	0.91	0.89	0.77	0.70	0.90	0.86
Muslim	0.99	0.97	0.98	0.95	0.98	0.98

### 8.4 Retention Rate

Social Groups	Primary			UpperPrimary		
	Boys	Girls	Total	Boys	Girls	Total
<b>All Social Groups</b>	90.99	87.99	89.57	93.06	93.06	91.20
General	84.86	80.90	82.99	90.80	90.80	87.38
Schedule Castes (SC)	86.81	85.01	85.94	87.85	84.44	86.24
Schedule Tribes (ST)	76.78	71.82	74.52	65.60	56.99	61.83
Other Backward Classes (OBC)	76.78	71.82	74.52	100.43	95.57	98.14
Muslim	85.39	86.91	89.57	85.43	79.64	91.20