



शिक्षणाचा अधिकार

सर्व शिक्षा अभियान
सारे शिक्षा, पुढे जाऊया

District Profile

Based on Unified District Information System for Education (UDISE), 2012-13

District : Thane

1 – Demographic (Source : Census of India,2011)

	Male	Female	Person	Sex Ratio	Child Sex Ratio (0-6 years)
Population	5,879,387	5,174,744	11,054,131		
Literacy rate	90.9	80.8	86.2	880	918

2- Number of Schools by Management and Category

Indicator (Number of schools)	Govt. and Local bodies	Pvt. Aided	Pvt. Unaided	Un-recognised	Total
Primary (1-4)	2,760	172	194	17	3,143
Primary with Upper Primary (1-7)	1,297	339	828	12	2,476
Pri,Upper,Secondary with Hsecondary (1 to 12)	28	3	19	0	50
Only Upper Primary	7	0	3	2	12
Upper,Secondary with Hsecondary (5 to 12)	3	139	25	1	168
Primary,Upperprimary with Secondary(1 to 10)	55	17	96	1	169
Upperprimary with Secondary(5 to 10)	9	196	87	2	294
Secondary Only (8 to 10)	38	220	608	2	868
Secondary with HSecondary(8 to 12)	1	51	79	1	132
Higher Secondary with college attached (11 to 12)	0	9	43	0	52
Total	4,198	1,146	1,982	38	7,364
Having Primary level classes	4,140	531	1,137	30	5,838
Having Upper Primary level classes	1,438	965	1,745	21	4,169
Having Secondary level classes	134	626	914	7	1,681
Having HigherSecondary level classes	32	202	166	2	402
Ratio of Primary to Upper Primary schools	State average				1.6
	District				1.4

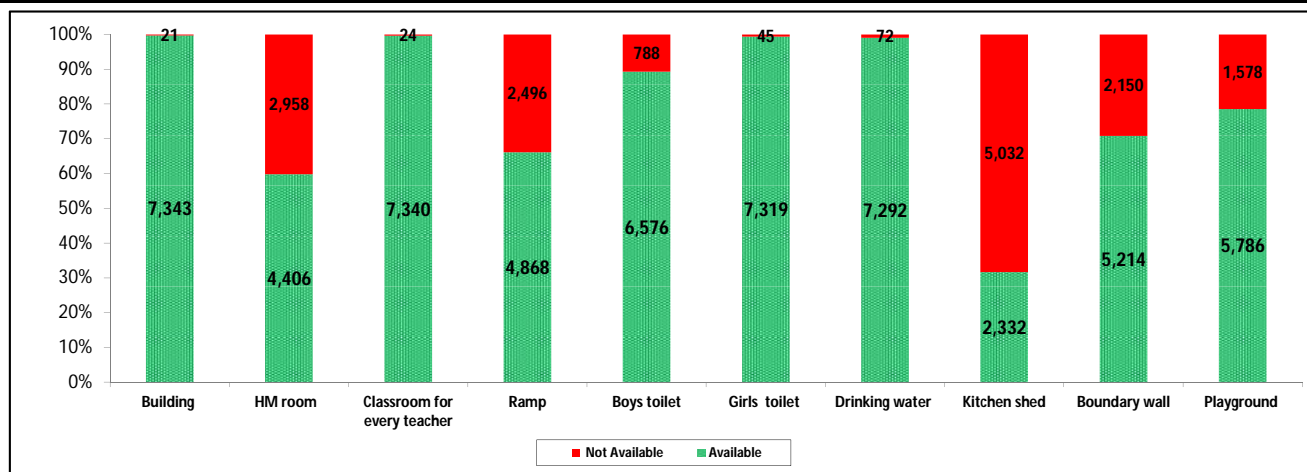
3 - Number of Mediumwise Schools by Management .

Indicator (Number of Mediumwise schools)	Govt. and Local bodies	Pvt. Aided	Pvt. Unaided	Un-recognised	Total
Marathi	3,940	825	297	13	5,075
English	14	28	1,395	23	1,460
Hindi	46	163	198	1	408
Urdu	138	69	60	1	268
Bangali	0	0	0	0	0
Gujrati	34	35	25	0	94
Kannada	3	6	1	0	10
Sindhi	4	15	3	0	22
Tamil	3	1	0	0	4
Telgu	16	4	3	0	23
Total	4,198	1,146	1,982	38	7,364

4 – Infrastructure

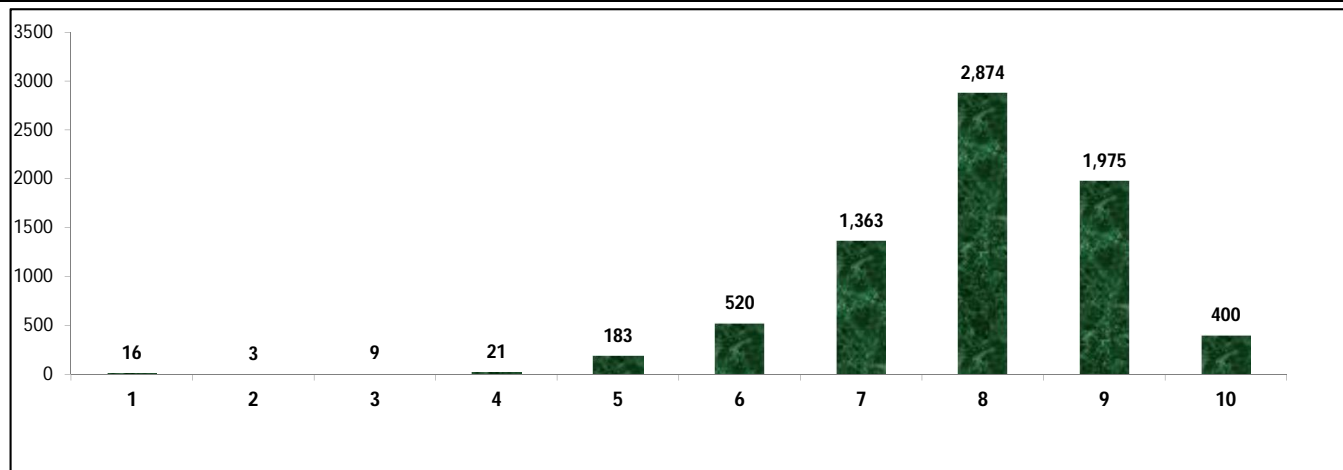
(Norms as specified in the schedule under section 19 of "The right of children to free and compulsory education act, 2009" (RTE Act))

Status of Infrastructure Facilities in Schools (Numbers, All schools)



Indicator : Schools with infrastructure facilities available		Govt. and Local bodies	Pvt. Aided	Pvt. Unaided	Un-recognised	Total
Total Schools		4198	1146	1982	38	7364
1. Building	Number	4,177	1,146	1,982	38	7,343
	%	99.5	100.0	100.0	100.0	99.7
2. Office-cum-store-cum-HM room	Number	1,504	1,021	1,851	30	4,406
	%	35.8	89.1	93.4	78.9	59.8
3. One classroom for every teacher	Number	4,175	1,146	1,981	38	7,340
	%	99.5	100.0	99.9	100.0	99.7
4. Ramp	Number	3,934	391	536	7	4,868
	%	93.7	34.1	27.0	18.4	66.1
5. Separate toilet for boys	Number	3,504	1,096	1,940	36	6,576
	%	83.5	95.6	97.9	94.7	89.3
6. Separate toilet for girls	Number	4,169	1,136	1,976	38	7,319
	%	99.3	99.1	99.7	100.0	99.4
7. Drinking water facility	Number	4,130	1,143	1,981	38	7,292
	%	98.4	99.7	99.9	100.0	99.0
8. Kitchen shed	Number	2,121	205	6	0	2,332
	%	50.5	17.9	0.3	0.0	31.7
9. Boundary wall	Number	2,534	925	1,727	28	5,214
	%	60.4	80.7	87.1	73.7	70.8
10. Playground	Number	2,976	1,018	1,767	25	5,786
	%	70.9	88.8	89.2	65.8	78.6
Indicators		Govt. and Local bodies	Pvt. Aided	Pvt. Unaided	Un-recognised	Total
Number of classrooms(1 to 8)		14,807	8,865	16,841	206	40,719
Number of classrooms(9 to 10)		290	2,326	2,674	10	5,300
Number of classrooms(11 to 12)		84	1,157	4	4	1,249
Student Classroom Ratio (SCR) Primary		32	UpperPri.	43	Elementry	40
Primary schools having SCR more than 30	Number	498	122	133	5	758
	%	11.9	10.6	6.7	13.2	10.3
Upper Primary. schools having SCR more than 35	Number	86	537	467	3	1,093
	%	2.0	46.9	23.6	7.9	14.8
Schools fulfilling "10" infrastructure norms for building under RTE	Number	323	73	4	0	400
	%	7.7	6.4	0.2	0.0	5.4

Number of schools by number of infrastructure elements complinace for building under RTE



5- Enrolment

Number of students enrolled in		Govt. and Local bodies	Pvt. Aided	Pvt. Unaided	Un-recognised	Total
Primary Classes (1-5)	Boys	178,141	113,434	267,051	2,953	561,579
	Girls	179,067	113,744	205,849	2,444	501,104
	Total	357,208	227,178	472,900	5,397	1,062,683
Upper Primary Classes (6-8)	Boys	55,690	121,333	126,266	753	304,042
	Girls	53,572	115,307	94,046	513	263,438
	Total	109,262	236,640	220,312	1,266	567,480
Secondary Classes (9-10)	Boys	8,509	84,669	68,230	245	161,653
	Girls	7,983	80,453	53,233	143	141,812
	Total	16,492	165,122	121,463	388	303,465
Higher Secondary Classes (11-12)	Boys	2,411	48,305	28,953	90	79,759
	Girls	1,423	49,292	23,740	75	74,530
	Total	3,834	97,597	52,693	165	154,289
Elementary Classes (1-8)	Boys	233,831	234,767	393,317	3,706	865,621
	Girls	232,639	229,051	299,895	2,957	764,542
	Total	466,470	463,818	693,212	6,663	1,630,163
All Classes (1-12)	Boys	244,751	367,741	490,500	4,041	1,107,033
	Girls	242,045	358,796	376,868	3,175	980,884
	Total	486,796	726,537	867,368	7,216	2,087,917

5.1- Castewise Enrolment

Indicator	Primary (1-5)	Upper Primary (6-8)	Secondary (9-10)	Higher Sec. (11-12)	Elementry (1-8)	All (Class 1-12)
All Social Groups	1,062,683	567,480	303,465	154,289	1,630,163	2,087,917
General	528,102	282,141	154,448	81,369	810,243	1,046,060
Schedule Castes (SC)	86,203	52,585	29,205	13,183	138,788	181,176
Schedule Tribes (ST)	216,003	91,067	35,937	17,247	307,070	360,254
Other Backward Classes (OBC)	232,375	141,687	83,875	42,490	374,062	500,427
Muslim	142,320	71,309	33,411	14,720	213,629	261,760
Nomadic Tribes (NT)	21,026	11,299	5,836	2,493	32,325	40,654
Vimukat Jatis (VJ)	5,289	3,189	1,774	802	8,478	11,054
Special Backward Classes (SBC)	12,126	9,646	6,964	2,934	21,772	31,670
Bouddhist Minority	23,468	13,917	7,146	3,235	37,385	47,766
Parshi Minority	600	223	148	46	823	1,017
Christan Minority	13,547	9,346	5,518	1,771	22,893	30,182
Sikh Minority	1,544	998	550	157	2,542	3,249
Jain Minority	4,613	2,986	1,885	681	7,599	10,165
B. P. L.	90,471	28,713	9,753	2,811	119,184	131,748
Children with Special Needs (C.W.S.N.)	8,608	3,282	880	278	11,890	13,048

5.2- Mediumwise Enrolment

Indicator (Number of Mediumwise schools)	Govt. and Local bodies	Pvt. Aided	Pvt. Unaided	Un-recognised	Total
Marathi	406,090	518,915	69,914	2,571	997,490
English	8,956	40,334	718,599	4,293	772,182
Hindi	20,034	92,179	57,173	87	169,473
Urdu	45,806	57,191	17,544	265	120,806
Bangali	0	0	0	0	0
Gujrati	2,411	11,202	2,780	0	16,393
Kannada	432	880	42	0	1,354
Sindhi	161	5,180	586	0	5,927
Tamil	469	5	0	0	474
Telgu	2,437	651	730	0	3,818
Total	486,796	726,537	867,368	7,216	2,087,917
School size (Distribution of schools by Enrolment)	Govt. and Local bodies	Pvt. Aided	Pvt. Unaided	Un-recognised	Total
Less than 10	135	4	10	0	149
11-20	442	7	26	1	476
21-30	552	7	31	4	594
31-60	1,136	28	122	4	1,290
61-150	952	115	438	13	1,518
More than 150	981	985	1,355	16	3,337

6- Gender Gap in Enrolment (in %)

Indicator	Primary (1-5)	Upper Primary (6-8)	Secondary (9-10)	Higher Secondary (11-12)	Elementry (1-8)	All (Class 1-12)
All Social Groups	5.69	7.16	6.54	3.39	6.20	6.04
General	7.84	8.78	7.14	3.26	8.17	7.63
Schedule Castes (SC)	3.32	4.11	5.15	-1.95	3.62	3.46
Schedule Tribes (ST)	4.11	8.11	11.58	15.41	5.30	6.41
Other Backward Classes (OBC)	3.16	4.44	3.76	4.02	4.43	3.51
Muslim	2.62	-0.69	-2.15	-4.61	1.51	0.70
Nomadic Tribes (NT)	4.17	10.19	10.83	2.93	6.27	6.72
Vimukat Jatis (VJ)	5.80	10.76	7.10	9.23	7.67	7.69
Special Backward Classes (SBC)	4.87	3.88	0.43	0.43	4.43	3.51
Bouddhist Minority	2.87	3.36	3.69	-3.06	3.05	2.73
Parshi Minority	-33.67	8.52	2.70	26.09	-22.24	-16.42
Christan Minority	4.24	1.03	-1.99	1.19	2.93	1.93
Sikh Minority	7.38	10.62	12.36	-0.64	8.65	8.83
Jain Minority	1.89	2.41	-5.04	-1.62	2.09	0.52
B. P. L.	0.79	5.43	5.85	22.80	1.91	2.65
Children with Special Needs (C.W.S.N.)	15.99	13.95	-2.50	-11.51	2.93	13.64
No. of clusters having gender gap > 10 %	34	121	133	84	57	64
No. of Block having gender gap > 10 %	0	2	4	4	0	0

7- Teacher

(Norms as specified in the schedule under section 19 and 23 of the RTE Act)

Indicators	Govt. and Local bodies	Pvt. Aided	Pvt. Unaided	Un-recognised	Total	
Number of Teachers	Male	8,033	6,814	3,434	18,341	
	Female	7,991	8,168	16,560	32,896	
	Total	16,024	14,982	19,994	237	51,237
Percentage of female teachers to total teachers	49.9	54.5	82.8	74.7	64.2	
Schools without a female teacher	Number	1,500	68	38	2	1,608
	%	35.7	5.9	1.9	5.3	21.8

7.1- Mediumwise Teacher

Medium	Govt. and Local bodies	Pvt. Aided	Pvt. Unaided	Un-recognised	Total
Marathi	14,086	10,942	1,979	76	27,083
English	322	708	16,165	145	17,340
Hindi	369	1,802	1,286	9	3,466
Urdu	989	951	394	7	2,341
Bangali	0	0	0	0	0
Gujrati	116	393	124	0	633
Kannada	19	38	8	0	65
Sindhi	12	121	23	0	156
Tamil	13	5	0	0	18
Telgu	98	22	15	0	135
Total	16,024	14,982	19,994	237	51,237

7.2- Castewise Teacher

Caste	Govt. and Local bodies	Pvt. Aided	Pvt. Unaided	Un-recognised	Total	
All	16,024	14,982	19,994	237	51,237	
Genral	4,899	6,354	15,071	121	26,445	
SC	1,512	1,732	893	12	4,149	
ST	3,065	1,536	389	24	5,014	
OBC	4,356	4,053	2,266	70	10,745	
VJ	1,122	733	705	2	2,562	
NT	591	284	106	3	984	
SBC	362	159	172	3	696	
NT-B	0	0	0	0	0	
NT-C	0	0	0	0	0	
NT-D	0	0	0	0	0	
Indicators	Govt. and Local bodies	Pvt. Aided	Pvt. Unaided	Un-recognised	Total	
Schools with single teacher	Number	240	2	13	0	255
	%	5.7	0.2	0.7	0.0	3.5
PTR	Local Body-Only	Primary Section	Upper Primary Section	Secondary Section	Elementry Section	All (Class 1-12)
Pupil Teacher Ratio	30	43	32	48	39	41
Indicators	Govt. and Local bodies	Pvt. Aided	Pvt. Unaided	Un-recognised	Total	
Primary schools having PTR more than 30	Number	608	114	138	4	864
	%	14.7	21.5	12.1	13.3	14.8
Upper Primary having PTR more than 35	Number	207	303	276	1	787
	%	14.4	31.4	15.8	4.8	18.9
Trained /Untrained Teacher	Primary Section	Upper Primary Section	Secondary Section	Higher Secondary Section	Elementry Section	All (Class 1-12)
Teacher All	24,567	17,550	6,372	2,748	42,117	51,237
Trained Teacher Number	24,116	17,260	6,263	2,715	41,376	50,354
%	98.2	98.3	98.3	98.8	98.2	98.3
Untrained Teacher All Number	451	290	109	33	741	883
%	1.8	1.7	1.7	1.2	1.8	1.7

8-Efficiency indicators

8.1 Annual Average Drop-out Rate

Social Groups	Primary			UpperPrimary		
	Boys	Girls	Total	Boys	Girls	Total
All Social Groups	0.72	0.76	0.74	3.10	3.60	3.30
General	-2.99	-2.84	-2.92	0.25	1.01	0.59
Schedule Castes (SC)	0.48	-0.09	0.21	3.57	3.39	3.49
Schedule Tribes (ST)	3.58	4.94	4.24	6.31	7.09	6.67
Other Backward Classes (OBC)	0.91	0.54	0.73	-0.75	0.68	-0.06
Vimukat Jatis (VJ)	15.10	14.95	15.03	11.43	13.86	12.53
Nomadic Tribes (NT)	5.29	4.27	4.81	5.91	5.03	5.52
Special Backward Classes (SBC)	6.46	0.08	3.54	2.57	1.11	1.87
Muslim	0.31	-1.35	-0.49	4.94	1.42	3.20

8.2 Transition Rate

Social Groups	Primary			UpperPrimary		
	Boys	Girls	Total	Boys	Girls	Total
All Social Groups	99.7	98.5	99.2	95.3	94.2	94.8
General	102.9	102.0	102.5	96.6	95.9	96.3
Schedule Castes (SC)	99.1	99.0	99.0	94.5	95.5	95.0
Schedule Tribes (ST)	92.7	90.2	91.5	87.4	85.0	86.3
Other Backward Classes (OBC)	99.7	99.0	99.4	98.2	98.2	97.1
VJ / NT	103.7	105.2	104.4	108.8	111.9	110.2
Special Backward Classes (SBC)	106.9	114.4	110.4	101.7	107.1	104.2
Muslim	99.2	101.5	100.3	87.7	87.7	87.7

8.3 Gender Parity Index (GPI)

Social Groups	Primary Section	Upper Primary Section	Secondary Section	Higher Secondary Section	Elementary Section	All (Class 1-12)
All Social Groups	0.89	0.87	0.88	0.93	0.88	0.89
General	0.85	0.84	0.84	0.94	0.85	0.86
Schedule Castes (SC)	0.94	0.92	0.90	0.90	0.93	0.93
Schedule Tribes (ST)	0.92	0.85	0.79	0.73	0.90	0.88
Other Backward Classes (OBC)	0.94	0.91	0.93	0.99	0.93	0.93
Vimukat Jatis (VJ)	0.89	0.81	0.87	0.83	0.86	0.86
Nomadic Tribes (NT)	0.92	0.82	0.80	0.94	0.88	0.87
Special Backward Classes (SBC)	0.91	0.93	0.99	0.92	0.92	0.93
Muslim	0.95	1.01	1.04	1.10	0.97	0.99

8.4 Retention Rate

Social Groups	Primary			UpperPrimary		
	Boys	Girls	Total	Boys	Girls	Total
All Social Groups	93.24	91.21	92.28	96.26	96.26	95.73
General	102.51	100.63	101.65	97.25	97.25	95.81
Schedule Castes (SC)	92.61	93.45	93.01	94.33	95.36	94.82
Schedule Tribes (ST)	71.52	67.92	69.79	86.74	83.99	85.47
Other Backward Classes (OBC)	71.52	67.92	69.79	101.16	100.44	100.81
Muslim	109.23	108.84	92.28	100.04	100.29	95.73