



शिक्षणाचा अधिकार

सर्व शिक्षा अभियान
सारे शिक्षक, पुढे जाऊया

District Profile

Based on Unified District Information System for Education (UDISE), 2012-13

District : Washim

1 – Demographic (Source : Census of India,2011)

	Male	Female	Person	Sex Ratio	Child Sex Ratio (0-6 years)
Population	621,228	575,486	1,196,714		
Literacy rate	90.5	72.3	81.7	926	859

2- Number of Schools by Management and Category

Indicator (Number of schools)	Govt. and Local bodies	Pvt. Aided	Pvt. Unaided	Un-recognised	Total
Primary (1-4)	470	20	52	0	542
Primary with Upper Primary (1-7)	342	39	50	0	431
Pri,Upper,Secondary with Hsecondary (1 to 12)	1	0	0	0	1
Only Upper Primary	0	0	0	0	0
Upper,Secondary with Hsecondary (5 to 12)	10	89	14	0	113
Primary,Upperprimary with Secondary(1 to 10)	2	1	17	0	20
Upperprimary with Secondary(5 to 10)	4	68	13	0	85
Secondary Only (8 to 10)	0	29	28	0	57
Secondary with HSecondary(8 to 12)	0	10	4	0	14
Higher Secondary with college attached (11 to 12)	0	14	3	0	17
Total	829	270	181	0	1,280
Having Primary level classes	815	60	119	0	994
Having Upper Primary level classes	359	236	126	0	721
Having Secondary level classes	17	197	76	0	290
Having HigherSecondary level classes	11	113	21	0	145
Ratio of Primary to Upper Primary schools	State average				1.6
	District				1.4

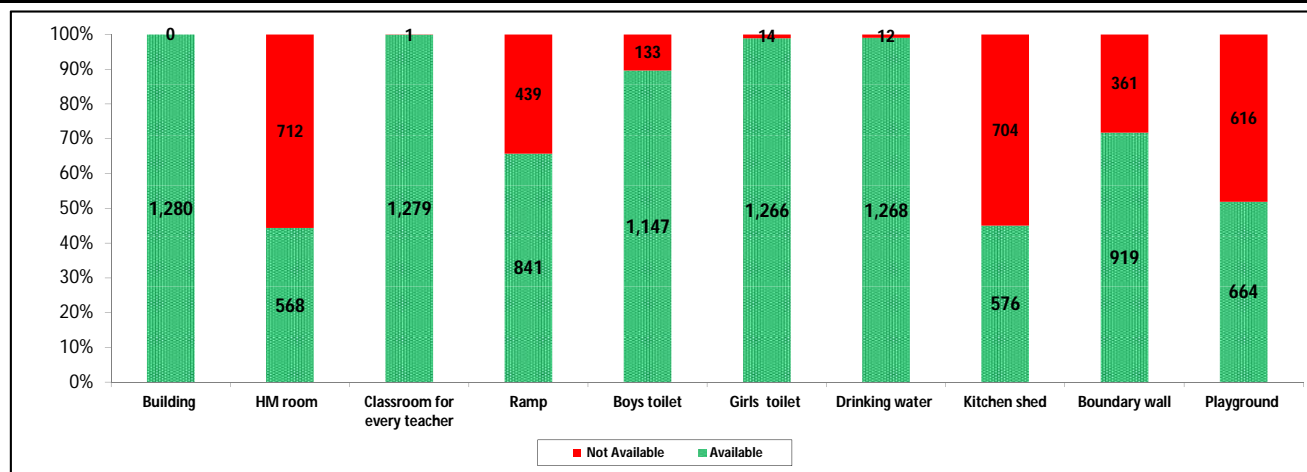
3 - Number of Mediumwise Schools by Management .

Indicator (Number of Mediumwise schools)	Govt. and Local bodies	Pvt. Aided	Pvt. Unaided	Un-recognised	Total
Marathi	757	242	99	0	1,098
English	1	2	55	0	58
Hindi	1	2	0	0	3
Urdu	70	24	27	0	121
Bangali	0	0	0	0	0
Gujrati	0	0	0	0	0
Kannada	0	0	0	0	0
Sindhi	0	0	0	0	0
Tamil	0	0	0	0	0
Telgu	0	0	0	0	0
Total	829	270	181	0	1,280

4 – Infrastructure

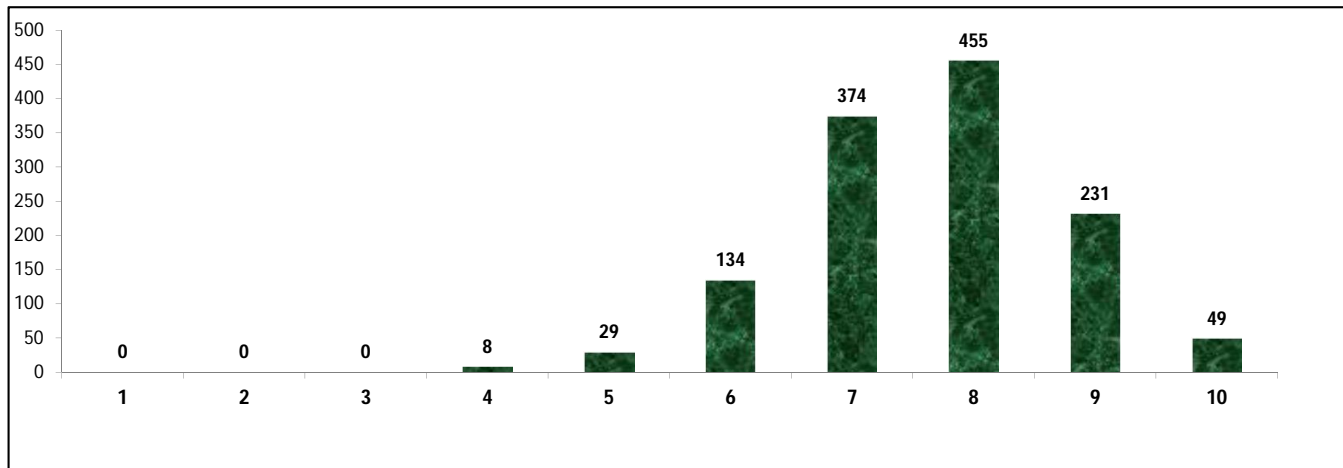
(Norms as specified in the schedule under section 19 of "The right of children to free and compulsory education act, 2009" (RTE Act))

Status of Infrastructure Facilities in Schools (Numbers, All schools)



Indicator : Schools with infrastructure facilities available		Govt. and Local bodies	Pvt. Aided	Pvt. Unaided	Un-recognised	Total
Total Schools		829	270	181	0	1280
1. Building	Number	829	270	181	0	1,280
	%	100.0	100.0	100.0	0.0	100.0
2. Office-cum-store-cum-HM room	Number	206	220	142	0	568
	%	24.8	81.5	78.5	0.0	44.4
3. One classroom for every teacher	Number	828	270	181	0	1,279
	%	99.9	100.0	100.0	0.0	99.9
4. Ramp	Number	746	66	29	0	841
	%	90.0	24.4	16.0	0.0	65.7
5. Separate toilet for boys	Number	773	215	159	0	1,147
	%	93.2	79.6	87.8	0.0	89.6
6. Separate toilet for girls	Number	823	269	174	0	1,266
	%	99.3	99.6	96.1	0.0	98.9
7. Drinking water facility	Number	818	269	181	0	1,268
	%	98.7	99.6	100.0	0.0	99.1
8. Kitchen shed	Number	487	87	2	0	576
	%	58.7	32.2	1.1	0.0	45.0
9. Boundary wall	Number	586	201	132	0	919
	%	70.7	74.4	72.9	0.0	71.8
10. Playground	Number	268	236	160	0	664
	%	32.3	87.4	88.4	0.0	51.9
Indicators		Govt. and Local bodies	Pvt. Aided	Pvt. Unaided	Un-recognised	Total
Number of classrooms(1 to 8)		3,497	1,309	870	0	5,676
Number of classrooms(9 to 10)		20	535	140	0	695
Number of classrooms(11 to 12)		18	337	0	0	355
Student Classroom Ratio (SCR) Primary		24	UpperPri.	38	Elementry	34
Primary schools having SCR more than 30	Number	93	11	16	0	120
	%	11.2	4.1	8.8	0.0	9.4
Upper Primary. schools having SCR more than 35	Number	7	157	34	0	198
	%	0.8	58.1	18.8	0.0	15.5
Schools fulfilling "10" infrastructure norms for building under RTE	Number	36	13	0	0	49
	%	4.3	4.8	0.0	0.0	3.8

Number of schools by number of infrastructure elements complinace for building under RTE



5- Enrolment

Number of students enrolled in		Govt. and Local bodies	Pvt. Aided	Pvt. Unaided	Un-recognised	Total
Primary Classes (1-5)	Boys	37,517	11,928	12,217	0	61,662
	Girls	37,885	9,901	7,579	0	55,365
	Total	75,402	21,829	19,796	0	117,027
Upper Primary Classes (6-8)	Boys	11,402	23,122	5,078	0	39,602
	Girls	10,950	20,314	3,622	0	34,886
	Total	22,352	43,436	8,700	0	74,488
Secondary Classes (9-10)	Boys	1,930	16,529	3,580	0	22,039
	Girls	1,475	14,422	2,454	0	18,351
	Total	3,405	30,951	6,034	0	40,390
Higher Secondary Classes (11-12)	Boys	837	10,407	1,025	0	12,269
	Girls	728	8,215	693	0	9,636
	Total	1,565	18,622	1,718	0	21,905
Elementary Classes (1-8)	Boys	48,919	35,050	17,295	0	101,264
	Girls	48,835	30,215	11,201	0	90,251
	Total	97,754	65,265	28,496	0	191,515
All Classes (1-12)	Boys	51,686	61,986	21,900	0	135,572
	Girls	51,038	52,852	14,348	0	118,238
	Total	102,724	114,838	36,248	0	253,810

5.1- Castewise Enrolment

Indicator	Primary (1-5)	Upper Primary (6-8)	Secondary (9-10)	Higher Sec. (11-12)	Elementary (1-8)	All (Class 1-12)
All Social Groups	117,027	74,488	40,390	21,905	191,515	253,810
General	16,710	10,183	5,628	3,563	26,893	36,084
Schedule Castes (SC)	24,461	16,167	8,980	4,386	40,628	53,994
Schedule Tribes (ST)	10,102	5,554	2,384	1,029	15,656	19,069
Other Backward Classes (OBC)	65,754	42,584	23,398	12,927	108,338	144,663
Muslim	15,220	8,258	3,818	1,728	23,478	29,024
Nomadic Tribes (NT)	12,117	7,787	4,070	1,841	19,904	25,815
Vimukat Jatis (VJ)	13,942	8,035	3,576	1,926	21,977	27,479
Special Backward Classes (SBC)	879	424	268	202	1,303	1,773
Bouddhist Minority	14,315	8,407	4,571	1,953	22,722	29,246
Parshi Minority	22	23	5	0	45	50
Christan Minority	24	19	12	14	43	69
Sikh Minority	24	7	2	6	31	39
Jain Minority	372	315	165	67	687	919
B. P. L.	29,032	13,209	5,300	1,717	42,241	49,258
Children with Special Needs (C.W.S.N.)	2,965	1,243	408	107	4,208	4,723

5.2- Mediumwise Enrolment

Indicator (Number of Mediumwise schools)	Govt. and Local bodies	Pvt. Aided	Pvt. Unaided	Un-recognised	Total
Marathi	91,746	107,064	18,669	0	217,479
English	489	200	13,058	0	13,747
Hindi	225	623	0	0	848
Urdu	10,264	6,951	4,521	0	21,736
Bangali	0	0	0	0	0
Gujrati	0	0	0	0	0
Kannada	0	0	0	0	0
Sindhi	0	0	0	0	0
Tamil	0	0	0	0	0
Telgu	0	0	0	0	0
Total	102,724	114,838	36,248	0	253,810
School size (Distribution of schools by Enrolment)	Govt. and Local bodies	Pvt. Aided	Pvt. Unaided	Un-recognised	Total
Less than 10	18	0	0	0	18
11-20	74	0	0	0	74
21-30	70	2	4	0	76
31-60	166	7	33	0	206
61-150	249	37	54	0	340
More than 150	252	224	90	0	566

6- Gender Gap in Enrolment (in %)

Indicator	Primary (1-5)	Upper Primary (6-8)	Secondary (9-10)	Higher Secondary (11-12)	Elementry (1-8)	All (Class 1-12)
All Social Groups	5.38	6.33	9.13	12.02	5.75	6.83
General	4.42	6.04	5.26	4.29	5.03	4.99
Schedule Castes (SC)	4.75	3.87	9.80	14.41	4.40	6.11
Schedule Tribes (ST)	6.77	8.53	12.42	12.15	7.40	8.28
Other Backward Classes (OBC)	5.65	7.05	9.47	10.89	9.44	8.97
Muslim	1.08	3.12	6.55	-2.55	1.80	2.16
Nomadic Tribes (NT)	4.43	4.51	8.21	12.98	4.46	5.66
Vimukat Jatis (VJ)	2.14	8.05	15.10	27.41	4.30	7.33
Special Backward Classes (SBC)	7.85	12.74	5.22	5.22	9.44	8.97
Bouddhist Minority	5.74	4.27	9.25	15.62	5.19	6.52
Parshi Minority	27.27	56.52	-20.00	0.00	42.22	36.00
Christan Minority	-8.33	5.26	-16.67	42.86	-2.33	4.35
Sikh Minority	8.33	-14.29	-100.00	66.67	3.23	7.69
Jain Minority	2.69	-12.38	-11.52	-25.37	-4.22	-7.07
B. P. L.	1.91	0.36	3.81	7.16	1.42	1.88
Children with Special Needs (C.W.S.N.)	27.35	13.76	15.20	6.54	-2.33	22.25
No. of clusters having gender gap > 10 %	9	17	35	31	9	14
No. of Block having gender gap > 10 %	0	1	3	5	0	1

7- Teacher

(Norms as specified in the schedule under section 19 and 23 of the RTE Act)

Indicators	Govt. and Local bodies	Pvt. Aided	Pvt. Unaided	Un-recognised	Total
Number of Teachers	Male	2,783	2,655	684	6,122
	Female	1,042	469	425	1,936
	Total	3,825	3,124	1,109	8,058
Percentage of female teachers to total teachers	27.2	15.0	38.3	0.0	24.0
Schools without a female teacher	Number	371	94	64	0
	%	44.8	34.8	35.4	0.0

7.1- Mediumwise Teacher

Medium	Govt. and Local bodies	Pvt. Aided	Pvt. Unaided	Un-recognised	Total
Marathi	3,461	2,883	608	0	6,952
English	24	7	353	0	384
Hindi	8	18	0	0	26
Urdu	332	216	148	0	696
Bangali	0	0	0	0	0
Gujrati	0	0	0	0	0
Kannada	0	0	0	0	0
Sindhi	0	0	0	0	0
Tamil	0	0	0	0	0
Telgu	0	0	0	0	0
Total	3,825	3,124	1,109	0	8,058

7.2- Castewise Teacher

Caste	Govt. and Local bodies	Pvt. Aided	Pvt. Unaided	Un-recognised	Total	
All	3,825	3,124	1,109	0	8,058	
Genral	1,176	961	424	0	2,561	
SC	525	457	164	0	1,146	
ST	259	218	47	0	524	
OBC	1,184	879	337	0	2,400	
VJ	332	312	72	0	716	
NT	202	230	46	0	478	
SBC	116	44	9	0	169	
NT-B	2	1	0	0	3	
NT-C	6	1	1	0	8	
NT-D	3	0	0	0	3	
Indicators	Govt. and Local bodies	Pvt. Aided	Pvt. Unaided	Un-recognised	Total	
Schools with single teacher	Number	5	0	0	5	
	%	0.6	0.0	0.0	0.4	
PTR	Local Body-Only	Primary Section	Upper Primary Section	Secondary Section	Elementry Section	All (Class 1-12)
Pupil Teacher Ratio	26	35	27	28	31	31
Indicators	Govt. and Local bodies	Pvt. Aided	Pvt. Unaided	Un-recognised	Total	
Primary schools having PTR more than 30	Number	107	11	17	0	135
	%	13.1	18.3	14.3	0.0	13.6
Upper Primary having PTR more than 35	Number	15	75	18	0	108
	%	4.2	31.8	14.3	0.0	15.0
Trained /Untrained Teacher	Primary Section	Upper Primary Section	Secondary Section	Higher Secondary Section	Elementry Section	All (Class 1-12)
Teacher All	3,380	2,775	1,428	475	6,155	8,058
Trained Teacher Number	3,353	2,717	1,415	464	6,070	7,949
%	99.2	97.9	99.1	97.7	98.6	98.6
Untrained Teacher All Number	27	58	13	11	85	109
%	0.8	2.1	0.9	2.3	1.4	1.4

8-Efficiency indicators

8.1 Annual Average Drop-out Rate

Social Groups	Primary			UpperPrimary		
	Boys	Girls	Total	Boys	Girls	Total
All Social Groups	2.98	2.37	2.69	2.85	3.79	3.30
General	5.93	3.22	4.65	4.86	5.10	4.97
Schedule Castes (SC)	2.21	1.80	2.01	2.68	4.04	3.34
Schedule Tribes (ST)	7.37	8.44	7.87	8.61	8.93	8.76
Other Backward Classes (OBC)	1.65	1.29	1.48	1.14	2.23	1.65
Vimukat Jatis (VJ)	-86.77	-93.09	-89.85	-81.10	-77.68	-79.51
Nomadic Tribes (NT)	-23.10	-25.15	-24.08	-17.57	-21.11	-19.23
Special Backward Classes (SBC)	71.44	71.18	71.32	74.79	78.88	76.75
Muslim	7.51	9.48	8.50	9.38	9.03	9.21

8.2 Transition Rate

Social Groups	Primary			UpperPrimary		
	Boys	Girls	Total	Boys	Girls	Total
All Social Groups	96.8	97.9	97.4	95.7	92.9	94.4
General	93.2	97.8	95.3	91.2	92.3	91.7
Schedule Castes (SC)	98.3	98.9	98.6	96.9	91.5	94.3
Schedule Tribes (ST)	85.3	89.2	87.1	90.0	84.5	87.5
Other Backward Classes (OBC)	99.2	99.0	99.1	97.2	97.2	96.0
VJ / NT	66.0	64.3	65.2	74.0	75.1	74.5
Special Backward Classes (SBC)	20.2	21.1	20.6	25.2	18.4	22.0
Muslim	96.5	85.9	91.1	77.9	80.0	78.9

8.3 Gender Parity Index (GPI)

Social Groups	Primary Section	Upper Primary Section	Secondary Section	Higher Secondary Section	Elementary Section	All (Class 1-12)
All Social Groups	0.90	0.88	0.83	0.79	0.89	0.87
General	0.92	0.89	0.89	0.92	0.90	0.90
Schedule Castes (SC)	0.91	0.93	0.82	0.82	0.92	0.88
Schedule Tribes (ST)	0.87	0.84	0.78	0.78	0.86	0.85
Other Backward Classes (OBC)	0.89	0.87	0.83	0.76	0.88	0.86
Vimukat Jatis (VJ)	0.96	0.85	0.74	0.57	0.92	0.86
Nomadic Tribes (NT)	0.92	0.91	0.85	0.77	0.91	0.89
Special Backward Classes (SBC)	0.85	0.77	0.90	0.80	0.83	0.84
Muslim	0.98	0.94	0.88	1.05	0.96	0.96

8.4 Retention Rate

Social Groups	Primary			UpperPrimary		
	Boys	Girls	Total	Boys	Girls	Total
All Social Groups	93.42	89.33	91.44	93.62	93.62	92.26
General	83.46	90.44	86.66	83.64	83.64	85.59
Schedule Castes (SC)	93.50	95.95	94.66	96.10	88.11	92.23
Schedule Tribes (ST)	74.36	47.23	58.51	83.96	74.09	79.28
Other Backward Classes (OBC)	74.36	47.23	58.51	96.79	95.64	96.24
Muslim	103.88	112.41	91.44	79.39	84.09	92.26