



शिक्षणाचा अधिकार

सर्व शिक्षा अभियान  
सारे शिक्षक, पुढे जाऊया

# District Profile

Based on Unified District Information System for Education (UDISE), 2012-13

District : Yavatmal

1 – Demographic (Source : Census of India,2011)

	Male	Female	Person	Sex Ratio	Child Sex Ratio (0-6 years)
Population	1,425,593	1,349,864	2,775,457		
Literacy rate	88.6	72.4	80.7	947	915

2- Number of Schools by Management and Category

Indicator (Number of schools )	Govt. and Local bodies	Pvt. Aided	Pvt. Unaided	Un-recognised	Total
Primary (1-4)	1,313	59	107	3	1,482
Primary with Upper Primary (1-7)	910	113	62	0	1,085
Pri,Upper,Secondary with Hsecondary (1 to 12)	6	2	7	0	15
Only Upper Primary	0	0	0	0	0
Upper,Secondary with Hsecondary (5 to 12)	13	128	15	0	156
Primary,Upperprimary with Secondary(1 to 10)	19	6	31	0	56
Upperprimary with Secondary(5 to 10)	34	131	21	0	186
Secondary Only (8 to 10)	7	112	41	0	160
Secondary with HSecondary(8 to 12)	1	43	13	0	57
Higher Secondary with college attached (11 to 12)	0	23	60	0	83
<b>Total</b>	<b>2,303</b>	<b>617</b>	<b>357</b>	<b>3</b>	<b>3,280</b>
Having Primary level classes	2,248	180	207	3	2,638
Having Upper Primary level classes	990	535	190	0	1,715
Having Secondary level classes	80	422	128	0	630
Having HigherSecondary level classes	20	196	95	0	311
Ratio of Primary to Upper Primary schools	State average				1.6
	District				1.5

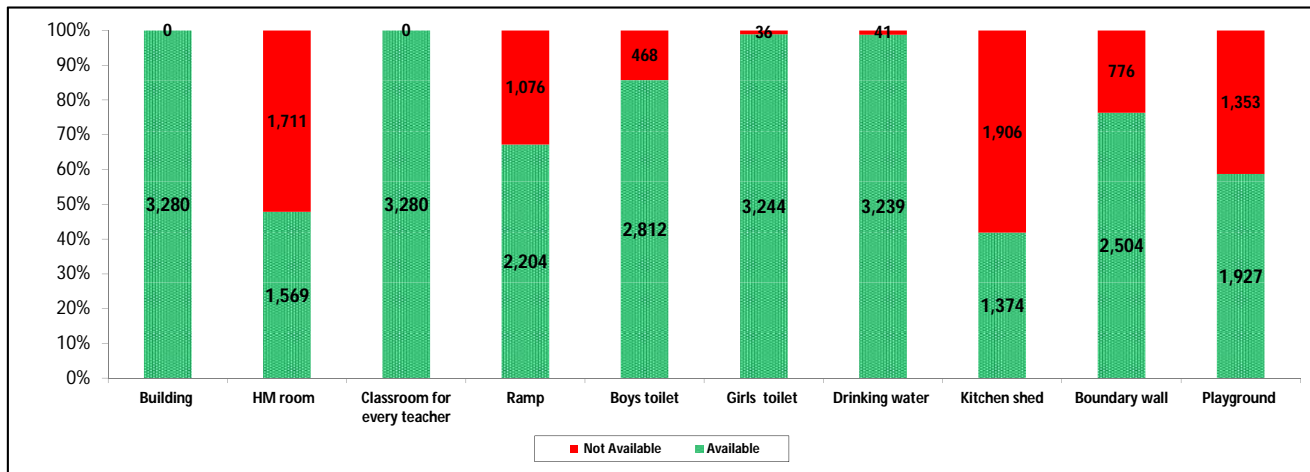
3 - Number of Mediumwise Schools by Management .

Indicator (Number of Mediumwise schools )	Govt. and Local bodies	Pvt. Aided	Pvt. Unaided	Un-recognised	Total
Marathi	2,180	564	170	0	2,914
English	5	2	161	3	171
Hindi	9	6	3	0	18
Urdu	109	45	23	0	177
Bangali	0	0	0	0	0
Gujrati	0	0	0	0	0
Kannada	0	0	0	0	0
Sindhi	0	0	0	0	0
Tamil	0	0	0	0	0
Telgu	0	0	0	0	0
<b>Total</b>	<b>2,303</b>	<b>617</b>	<b>357</b>	<b>3</b>	<b>3,280</b>

## 4 – Infrastructure

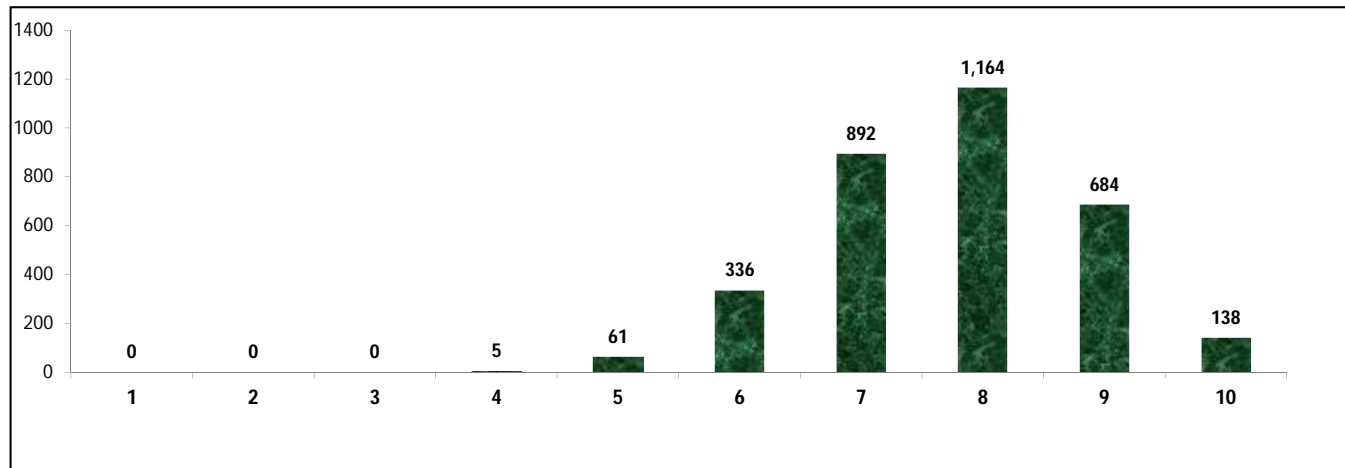
(Norms as specified in the schedule under section 19 of "The right of children to free and compulsory education act, 2009" ( RTE Act ) )

### Status of Infrastructure Facilities in Schools (Numbers, All schools)



Indicator : Schools with infrastructure facilities available		Govt. and Local bodies	Pvt. Aided	Pvt. Unaided	Un-recognised	Total
<b>Total Schools</b>		<b>2303</b>	<b>617</b>	<b>357</b>	<b>3</b>	<b>3280</b>
1. Building	Number	2,303	617	357	3	3,280
	%	100.0	100.0	100.0	100.0	100.0
2. Office-cum-store-cum-HM room	Number	714	545	308	2	1,569
	%	31.0	88.3	86.3	66.7	47.8
3. One classroom for every teacher	Number	2,303	617	357	3	3,280
	%	100.0	100.0	100.0	100.0	100.0
4. Ramp	Number	2,092	75	37	0	2,204
	%	90.8	12.2	10.4	0.0	67.2
5. Separate toilet for boys	Number	1,939	546	324	3	2,812
	%	84.2	88.5	90.8	100.0	85.7
6. Separate toilet for girls	Number	2,283	609	349	3	3,244
	%	99.1	98.7	97.8	100.0	98.9
7. Drinking water facility	Number	2,262	617	357	3	3,239
	%	98.2	100.0	100.0	100.0	98.8
8. Kitchen shed	Number	1,049	310	15	0	1,374
	%	45.5	50.2	4.2	0.0	41.9
9. Boundary wall	Number	1,723	486	292	3	2,504
	%	74.8	78.8	81.8	100.0	76.3
10. Playground	Number	1,005	596	323	3	1,927
	%	43.6	96.6	90.5	100.0	58.8
<b>Indicators</b>		<b>Govt. and Local bodies</b>	<b>Pvt. Aided</b>	<b>Pvt. Unaided</b>	<b>Un-recognised</b>	<b>Total</b>
Number of classrooms(1 to 8)		9,110	2,890	1,554	16	13,570
Number of classrooms(9 to 10)		186	1,086	266	0	1,538
Number of classrooms(11 to 12)		47	623	0	0	670
<b>Student Classroom Ratio (SCR) Primary</b>		<b>21</b>	<b>UpperPri.</b>	<b>34</b>	<b>Elementry</b>	<b>31</b>
Primary schools having SCR more than 30	Number	179	30	17	0	226
	%	7.8	4.9	4.8	0.0	6.9
Upper Primary. schools having SCR more than 35	Number	36	336	37	0	409
	%	1.6	54.5	10.4	0.0	12.5
<b>Schools fulfilling "10" infrastructure norms for building under RTE</b>	Number	119	17	2	0	138
	%	5.2	2.8	0.6	0.0	4.2

**Number of schools by number of infrastructure elements complinace for building under RTE**



**5- Enrolment**

Number of students enrolled in		Govt. and Local bodies	Pvt. Aided	Pvt. Unaided	Un-recognised	Total
Primary Classes (1-5)	Boys	87,228	27,405	19,792	96	134,521
	Girls	86,631	22,823	13,982	69	123,505
	<b>Total</b>	<b>173,859</b>	<b>50,228</b>	<b>33,774</b>	<b>165</b>	<b>258,026</b>
Upper Primary Classes (6-8)	Boys	28,792	46,508	7,168	0	82,468
	Girls	29,089	39,529	5,424	0	74,042
	<b>Total</b>	<b>57,881</b>	<b>86,037</b>	<b>12,592</b>	<b>0</b>	<b>156,510</b>
Secondary Classes (9-10)	Boys	4,453	34,698	5,154	0	44,305
	Girls	4,144	31,235	3,904	0	39,283
	<b>Total</b>	<b>8,597</b>	<b>65,933</b>	<b>9,058</b>	<b>0</b>	<b>83,588</b>
Higher Secondary Classes (11-12)	Boys	1,021	18,309	4,720	0	24,050
	Girls	1,229	17,040	3,278	0	21,547
	<b>Total</b>	<b>2,250</b>	<b>35,349</b>	<b>7,998</b>	<b>0</b>	<b>45,597</b>
Elementary Classes (1-8)	<b>Boys</b>	<b>116,020</b>	<b>73,913</b>	<b>26,960</b>	<b>96</b>	<b>216,989</b>
	<b>Girls</b>	<b>115,720</b>	<b>62,352</b>	<b>19,406</b>	<b>69</b>	<b>197,547</b>
	<b>Total</b>	<b>231,740</b>	<b>136,265</b>	<b>46,366</b>	<b>165</b>	<b>414,536</b>
All Classes (1-12)	Boys	121,494	126,920	36,834	96	285,344
	Girls	121,093	110,627	26,588	69	258,377
	<b>Total</b>	<b>242,587</b>	<b>237,547</b>	<b>63,422</b>	<b>165</b>	<b>543,721</b>

**5.1- Castewise Enrolment**

Indicator	Primary (1-5)	Upper Primary (6-8)	Secondary (9-10)	Higher Sec. (11-12)	Elementry (1-8)	All (Class 1-12)
<b>All Social Groups</b>	<b>258,026</b>	<b>156,510</b>	<b>83,588</b>	<b>45,597</b>	<b>414,536</b>	<b>543,721</b>
<b>General</b>	34,982	20,824	11,690	7,131	55,806	74,627
<b>Schedule Castes (SC)</b>	31,391	20,210	11,380	6,298	51,601	69,279
<b>Schedule Tribes (ST)</b>	52,337	30,940	14,202	6,538	83,277	104,017
<b>Other Backward Classes (OBC)</b>	139,316	84,536	46,316	25,630	223,852	295,798
<b>Muslim</b>	26,010	14,248	6,885	3,037	40,258	50,180
<b>Nomadic Tribes (NT)</b>	22,807	14,025	7,064	3,614	36,832	47,510
<b>Vimukat Jatis (VJ)</b>	45,854	25,497	11,531	5,899	71,351	88,781
<b>Special Backward Classes (SBC)</b>	5,878	3,916	2,068	996	9,794	12,858
<b>Bouddhist Minority</b>	12,856	6,578	3,331	1,903	19,434	24,668
<b>Parshi Minority</b>	23	26	10	11	49	70
<b>Christan Minority</b>	121	70	54	11	191	256
<b>Sikh Minority</b>	101	115	21	14	216	251
<b>Jain Minority</b>	487	285	101	105	772	978
<b>B. P. L.</b>	55,541	21,538	7,073	2,845	77,079	86,997
<b>Children with Special Needs (C.W.S.N.)</b>	5,197	1,754	603	112	6,951	7,666

## 5.2- Mediumwise Enrolment

Indicator (Number of Mediumwise schools )	Govt. and Local bodies	Pvt. Aided	Pvt. Unaided	Un-recognised	Total
Marathi	223,336	220,526	23,370	0	467,232
English	1,544	1,125	37,237	165	40,071
Hindi	1,167	3,856	307	0	5,330
Urdu	16,540	12,040	2,508	0	31,088
Bangali	0	0	0	0	0
Gujrati	0	0	0	0	0
Kannada	0	0	0	0	0
Sindhi	0	0	0	0	0
Tamil	0	0	0	0	0
Telgu	0	0	0	0	0
<b>Total</b>	<b>242,587</b>	<b>237,547</b>	<b>63,422</b>	<b>165</b>	<b>543,721</b>
School size (Distribution of schools by Enrolment)	Govt. and Local bodies	Pvt. Aided	Pvt. Unaided	Un-recognised	Total
Less than 10	61	1	2	0	64
11-20	289	0	7	0	296
21-30	291	10	12	1	314
31-60	467	14	70	1	552
61-150	614	117	138	1	870
More than 150	581	475	128	0	1,184

## 6- Gender Gap in Enrolment (in %)

Indicator	Primary (1-5)	Upper Primary (6-8)	Secondary (9-10)	Higher Secondary (11-12)	Elementry (1-8)	All (Class 1-12)
<b>All Social Groups</b>	<b>4.27</b>	<b>5.38</b>	<b>6.01</b>	<b>5.49</b>	<b>4.69</b>	<b>4.96</b>
General	5.08	3.49	3.22	1.00	4.48	3.95
Schedule Castes (SC)	4.19	4.10	6.57	8.61	4.15	4.96
Schedule Tribes (ST)	3.10	4.71	5.08	8.17	3.70	4.17
Other Backward Classes (OBC)	4.52	6.40	6.86	2.21	2.65	3.31
Muslim	2.32	-0.14	0.68	-6.88	1.45	0.84
Nomadic Tribes (NT)	2.87	7.41	6.51	4.48	4.60	4.87
Vimukat Jatis (VJ)	4.69	10.48	16.24	24.05	6.76	9.14
Special Backward Classes (SBC)	2.65	2.66	6.96	6.96	2.65	3.31
Bouddhist Minority	3.48	5.44	10.54	6.88	4.15	5.22
Parshi Minority	65.22	53.85	40.00	9.09	59.18	48.57
Christan Minority	-0.83	-11.43	7.41	-9.09	-4.71	-2.34
Sikh Minority	2.97	65.22	4.76	28.57	36.11	33.07
Jain Minority	4.72	3.16	20.79	-18.10	4.15	3.48
B. P. L.	2.39	-0.14	-5.22	-0.18	1.68	1.06
Children with Special Needs (C.W.S.N.)	12.72	9.58	12.77	12.50	-4.71	12.00
No. of clusters having gender gap > 10 %	14	33	67	61	15	22
No. of Block having gender gap > 10 %	0	1	3	5	0	1

## 7- Teacher

(Norms as specified in the schedule under section 19 and 23 of the RTE Act)

Indicators	Govt. and Local bodies	Pvt. Aided	Pvt. Unaided	Un-recognised	Total
Number of Teachers	Male	6,592	4,771	1,098	12,467
	Female	3,366	1,439	1,123	5,936
	<b>Total</b>	<b>9,958</b>	<b>6,210</b>	<b>2,221</b>	<b>18,403</b>
Percentage of female teachers to total teachers	33.8	23.2	50.6	57.1	32.3
Schools without a female teacher	<b>Number</b>	<b>1,013</b>	<b>163</b>	<b>51</b>	<b>1,228</b>
	%	44.0	26.4	14.3	33.3

## 7.1- Mediumwise Teacher

Medium	Govt. and Local bodies	Pvt. Aided	Pvt. Unaided	Un-recognised	Total
Marathi	9,331	5,761	906	0	15,998
English	49	18	1,197	14	1,278
Hindi	44	77	12	0	133
Urdu	534	354	106	0	994
Bangali	0	0	0	0	0
Gujrati	0	0	0	0	0
Kannada	0	0	0	0	0
Sindhi	0	0	0	0	0
Tamil	0	0	0	0	0
Telgu	0	0	0	0	0
<b>Total</b>	<b>9,958</b>	<b>6,210</b>	<b>2,221</b>	<b>14</b>	<b>18,403</b>

## 7.2- Castewise Teacher

Caste	Govt. and Local bodies	Pvt. Aided	Pvt. Unaided	Un-recognised	Total	
All	9,958	6,210	2,221	14	18,403	
Genral	1,646	1,472	643	1	3,762	
SC	1,530	876	323	1	2,730	
ST	1,267	672	116	0	2,055	
OBC	3,654	2,090	787	9	6,540	
VJ	670	348	114	0	1,132	
NT	514	438	118	0	1,070	
SBC	210	80	26	1	317	
NT-B	81	32	10	0	123	
NT-C	98	9	9	1	117	
NT-D	72	2	2	0	76	
Indicators	Govt. and Local bodies	Pvt. Aided	Pvt. Unaided	Un-recognised	Total	
Schools with single teacher	Number	55	3	3	0	61
	%	2.4	0.5	0.8	0.0	1.9
PTR	Local Body-Only	Primary Section	Upper Primary Section	Secondary Section	Elementry Section	All (Class 1-12)
Pupil Teacher Ratio	24	32	24	29	29	30
Indicators	Govt. and Local bodies	Pvt. Aided	Pvt. Unaided	Un-recognised	Total	
Primary schools having PTR more than 30	Number	224	33	22	0	279
	%	10.0	18.3	10.6	0.0	10.6
Upper Primary having PTR more than 35	Number	70	147	19	0	236
	%	7.1	27.5	10.0	0.0	13.8
Trained /Untrained Teacher	Primary Section	Upper Primary Section	Secondary Section	Higher Secondary Section	Elementry Section	All (Class 1-12)
Teacher All	8,071	6,417	2,864	1,051	14,488	18,403
Trained Teacher Number	7,927	6,237	2,818	1,037	14,164	18,019
%	98.2	97.2	98.4	98.7	97.8	97.9
Untrained Teacher All Number	144	180	46	14	324	384
%	1.8	2.8	1.6	1.3	2.2	2.1

## 8-Efficiency indicators

### 8.1 Annual Average Drop-out Rate

Social Groups	Primary			UpperPrimary		
	Boys	Girls	Total	Boys	Girls	Total
<b>All Social Groups</b>	4.40	4.14	4.27	5.18	5.81	5.48
<b>General</b>	12.54	11.88	12.23	16.63	16.98	16.80
Schedule Castes (SC)	4.77	4.42	4.60	4.72	5.96	5.32
Schedule Tribes (ST)	6.55	5.91	6.24	6.33	6.61	6.46
Other Backward Classes (OBC)	0.16	0.12	0.15	1.03	1.57	1.28
Vimukat Jatis (VJ)	7.99	8.84	8.40	7.43	11.08	9.10
Nomadic Tribes (NT)	9.28	7.02	8.20	7.47	12.88	10.06
Special Backward Classes (SBC)	7.09	3.02	5.15	10.51	3.54	7.25
Muslim	4.05	3.02	3.55	6.79	7.34	7.06

### 8.2 Transition Rate

Social Groups	Primary			UpperPrimary		
	Boys	Girls	Total	Boys	Girls	Total
<b>All Social Groups</b>	95.8	95.5	95.7	90.4	88.9	89.7
General	86.6	88.6	87.5	80.7	80.8	80.8
Schedule Castes (SC)	94.6	94.1	94.3	91.6	90.1	90.9
Schedule Tribes (ST)	93.8	93.4	93.6	88.8	85.8	87.4
Other Backward Classes (OBC)	99.5	98.6	99.1	93.5	93.5	92.9
VJ / NT	108.7	111.9	110.2	115.5	125.8	120.1
Special Backward Classes (SBC)	98.1	104.2	100.8	81.1	83.8	82.4
Muslim	92.2	96.2	94.1	87.6	83.8	85.6

### 8.3 Gender Parity Index (GPI)

Social Groups	Primary Section	Upper Primary Section	Secondary Section	Higher Secondary Section	Elementary Section	All (Class 1-12)
<b>All Social Groups</b>	0.92	0.90	0.89	0.90	0.91	0.91
General	0.90	0.93	0.93	0.98	0.91	0.92
Schedule Castes (SC)	0.92	0.92	0.88	0.88	0.92	0.91
Schedule Tribes (ST)	0.94	0.91	0.90	0.85	0.93	0.92
Other Backward Classes (OBC)	0.91	0.88	0.87	0.90	0.90	0.90
Vimukat Jatis (VJ)	0.91	0.81	0.72	0.61	0.87	0.83
Nomadic Tribes (NT)	0.94	0.86	0.88	0.91	0.91	0.91
Special Backward Classes (SBC)	0.95	0.95	0.87	0.96	0.95	0.94
Muslim	0.95	1.00	0.99	1.15	0.97	0.98

### 8.4 Retention Rate

Social Groups	Primary			UpperPrimary		
	Boys	Girls	Total	Boys	Girls	Total
<b>All Social Groups</b>	89.98	91.07	90.49	88.54	88.54	88.09
General	84.67	89.17	86.76	80.75	80.75	81.88
Schedule Castes (SC)	91.54	93.34	92.40	90.42	90.23	90.33
Schedule Tribes (ST)	83.79	84.31	84.04	85.92	82.64	84.36
Other Backward Classes (OBC)	83.79	84.31	84.04	91.27	90.56	90.93
Muslim	89.33	101.07	90.49	83.90	83.36	88.09