



District Profile

Based on Unified District Information System for Education (UDISE), 2013-14

District : Aurangabad

1 – Demographic (Source : Census of India,2011)

	Male	Female	Person	Sex Ratio	Child Sex Ratio (0-6 years)
Population	1,928,156	1,767,772	3,695,928		
Literacy rate	89.3	70.8	80.4	917	848

2- Number of Schools by Management and Category (Class 1 to 12)

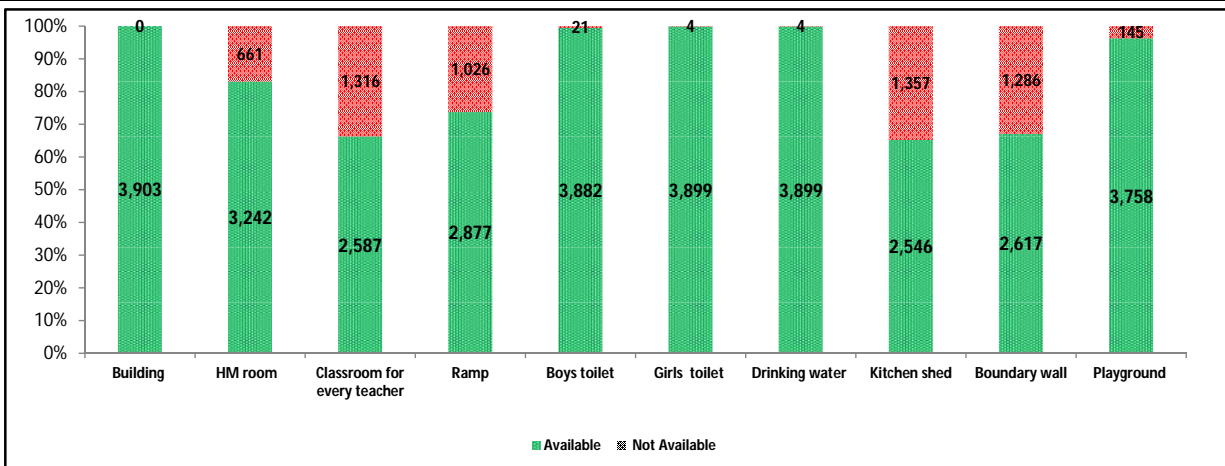
Indicator (Number of schools)	Govt. and Local bodies	Pvt. Aided	Pvt. Unaided	Un-recognised	Total
Primary (1-4/5)	1,407	74	325	8	1,814
Primary with Upper Primary (1-7/8)	749	213	251	1	1,214
Pri,Upper,Secondary with Hsecondary (1 to 12)	1	1	1	0	3
Only Upper Primary (5/6 to 7/8)	0	0	0	0	0
Upper,Secondary with Hsecondary (5/6 to 12)	13	120	15	0	148
Primary,Upperprimary with Secondary(1 to 10)	4	3	24	0	31
Upperprimary with Secondary(5/6 to 10)	46	162	51	2	261
Secondary Only (8/9 to 10)	16	100	155	5	276
Secondary with HSecondary(8/9 to 12)	0	21	15	0	36
Higher Secondary with college attached (11 to 12)	2	47	71	0	120
Total	2,238	741	908	16	3,903
Having Primary level classes	2,161	291	601	9	3,062
Having Upper Primary level classes	813	499	342	3	1,657
Having Secondary level classes	80	407	261	7	755
Having HigherSecondary level classes	16	189	102	0	307
Ratio of Primary to Upper Primary schools	State average				1.93
	District				1.85

3 - Number of Mediumwise Schools by Management .(Class 1 to 12)

Indicator (Number of Mediumwise schools)	Govt. and Local bodies	Pvt. Aided	Pvt. Unaided	Un-recognised	Total
Marathi	2,203	594	406	9	3,212
English	2	10	371	7	390
Hindi	1	4	6	0	11
Urdu	32	133	125	0	290
Bangali	0	0	0	0	0
Gujrati	0	0	0	0	0
Kannada	0	0	0	0	0
Sindhi	0	0	0	0	0
Tamil	0	0	0	0	0
Telgu	0	0	0	0	0
Total	2,238	741	908	16	3,903

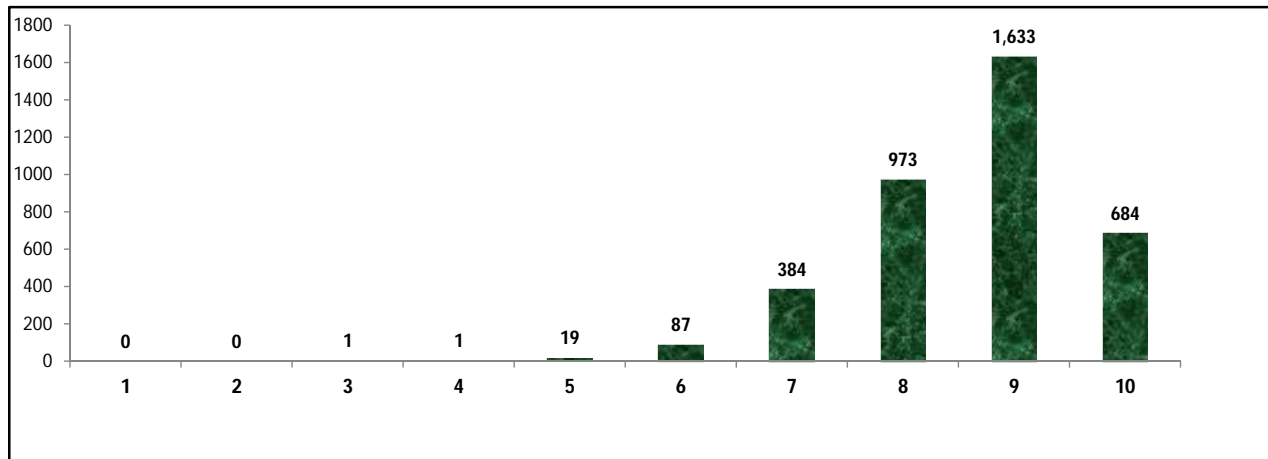
4 – Infrastructure at Elementry Level

Status of Infrastructure Facilities in Schools (Numbers, All schools)



Indicator : Schools with infrastructure facilities available (Sch.All)		Govt. and Local bodies	Pvt. Aided	Pvt. Unaided	Un-recognised	Total
Total Schools		2238	741	908	16	3903
1. Building	Number	2,238	741	908	16	3,903
	%	100.00	100.00	100.00	100.00	100.00
2. Office-cum-store-cum-HM room	Number	1,692	693	844	13	3,242
	%	75.60	93.52	92.95	81.25	83.06
3. One classroom for every teacher	Number	1,803	223	551	10	2,587
	%	80.56	30.09	60.68	62.50	66.28
4. Ramp	Number	2,159	288	426	4	2,877
	%	96.47	38.87	46.92	25.00	73.71
5. Separate toilet for boys	Number	2,234	729	903	16	3,882
	%	99.82	98.38	99.45	100.00	99.46
6. Separate toilet for girls	Number	2,238	741	904	16	3,899
	%	100.00	100.00	99.56	100.00	99.90
7. Drinking water facility	Number	2,237	740	906	16	3,899
	%	99.96	99.87	99.78	100.00	99.90
8. Kitchen shed (Gov & Aided Schools)	Number	2,171	375	NA	NA	2,546
	%	97.01	50.61	NA	NA	85.46
9. Boundary wall	Number	1,200	613	794	10	2,617
	%	53.62	82.73	87.44	62.50	67.05
10. Playground	Number	2,189	717	842	10	3,758
	%	97.81	96.76	92.73	62.50	96.28
Indicators		Govt. and Local bodies	Pvt. Aided	Pvt. Unaided	Un-recognised	Total
Number of classrooms(1 to 8)		10,074	5,029	5,374	70	20,547
Number of classrooms(9 to 10)		260	1,296	631	6	2,193
Number of classrooms(11 to 12)		45	809	394	0	1,248
Student Classroom Ratio (SCR) Primary		21	UpperPri.	36	Elementry	31
Primary schools having SCR more than 30	Number	133	46	86	0	265
	%	9.45	62.16	26.46	0.00	14.61
Upper Primary. schools having SCR more than 35	Number	230	358	138	1	727
	%	28.29	71.74	40.35	33.33	43.87
Schools fulfilling "10" infrastructure norms for building under RTE(El.Sch.)	Number	582	52	50	0	684
	%	26.03	7.49	5.97	0.00	18.08

Number of schools by number of infrastructure elements compliance



5- Enrolment (Class 1 to 12)

Number of students enrolled in		Govt. and Local bodies	Pvt. Aided	Pvt. Unaided	Un-recognised	Total
Primary Classes (1-5)	Boys	96,177	57,329	66,661	511	220,678
	Girls	93,574	53,972	44,205	277	192,028
	Total	189,751	111,301	110,866	788	412,706
Upper Primary Classes (6-8)	Boys	35,113	61,967	26,122	210	123,412
	Girls	33,484	54,649	16,736	197	105,066
	Total	68,597	116,616	42,858	407	228,478
Secondary Classes (9-10)	Boys	7,140	45,720	16,764	79	69,703
	Girls	5,279	37,563	10,735	104	53,681
	Total	12,419	83,283	27,499	183	123,384
Higher Secondary Classes (11-12)	Boys	1,016	38,269	10,642	0	49,927
	Girls	793	27,299	6,569	0	34,661
	Total	1,809	65,568	17,211	0	84,588
Elementary Classes (1-8)	Boys	131,290	119,296	92,783	721	344,090
	Girls	127,058	108,621	60,941	474	297,094
	Total	258,348	227,917	153,724	1,195	641,184
All Classes (1-12)	Boys	139,446	203,285	120,189	800	463,720
	Girls	133,130	173,483	78,245	578	385,436
	Total	272,576	376,768	198,434	1,378	849,156

5.1- Castewise Enrolment (Class 1 to 12)

Indicator	Primary	Upper Primary	Secondary	Higher Sec.	Elementry	All
All Social Groups	412,706	228,478	123,384	84,588	641,184	849,156
General	210,848	114,153	62,132	42,535	325,001	429,668
Schedule Castes (SC)	65,829	37,478	19,951	12,825	103,307	136,083
Schedule Tribes (ST)	23,555	11,127	4,414	2,698	34,682	41,794
Other Backward Classes (OBC)	112,474	65,720	36,887	26,530	178,194	241,611
Muslim	99,555	49,508	21,969	9,204	149,063	180,236
Nomadic Tribes (NT)	25,037	14,364	7,745	4,793	39,401	51,939
Vimukat Jatis (VJ)	24,143	13,417	6,194	4,415	37,560	48,169
Special Backward Classes (SBC)	1,981	934	618	428	2,915	3,961
Bouddhist Minority	21,029	10,061	5,287	2,085	31,090	38,462
Parshi Minority	440	145	101	74	585	760
Christan Minority	1,113	583	355	52	1,696	2,103
Sikh Minority	735	470	262	70	1,205	1,537
Jain Minority	1,361	995	751	194	2,356	3,301
B. P. L.	26,695	11,492	3,385	558	38,187	42,130
Children with Special Needs (C.W.S.N.)	7,626	3,190	1,031	222	10,816	12,069

5.2- Mediumwise Enrolment (Class 1 to 12)

Indicator (Number of Mediumwise schools)	Govt. and Local bodies	Pvt. Aided	Pvt. Unaided	Un-recognised	Total
Marathi	262,791	308,802	93,970	998	666,561
English	616	8,997	81,486	380	91,479
Hindi	1,983	1,004	977	0	3,964
Urdu	7,186	57,965	22,001	0	87,152
Bangali	0	0	0	0	0
Gujrati	0	0	0	0	0
Kannada	0	0	0	0	0
Sindhi	0	0	0	0	0
Tamil	0	0	0	0	0
Telgu	0	0	0	0	0
Total	272,576	376,768	198,434	1,378	849,156
School size (Distribution of schools by Enrolment)	Govt. and Local bodies	Pvt. Aided	Pvt. Unaided	Un-recognised	Total
Less than 10	75	2	20	0	97
11-20	286	2	28	2	318
21-30	383	4	40	1	428
31-60	408	9	110	4	531
61-150	410	92	291	6	799
More than 150	676	632	419	3	1,730

6- Gender Gap in Enrolment (in %)

Indicator	Primary	Upper Primary	Secondary	Higher Secondary	Elementry	All
All Social Groups	6.94	8.03	12.99	18.05	7.33	9.22
General	6.75	6.89	10.36	15.01	6.80	8.13
Schedule Castes (SC)	5.18	6.69	11.52	16.76	5.73	7.62
Schedule Tribes (ST)	5.11	10.63	20.62	31.13	6.88	9.90
Other Backward Classes (OBC)	8.71	10.33	17.29	46.26	8.27	13.15
Muslim	2.81	2.75	5.62	11.19	2.79	3.56
Nomadic Tribes (NT)	6.25	9.52	17.70	24.47	7.44	10.55
Vimukat Jatis (VJ)	8.33	12.25	20.15	29.33	9.73	12.87
Special Backward Classes (SBC)	8.43	7.92	13.27	13.27	8.27	13.15
Bouddhist Minority	4.77	8.58	13.30	15.20	6.00	7.50
Parshi Minority	10.91	13.10	12.87	-2.70	11.45	10.26
Christan Minority	11.05	3.95	15.49	-11.54	8.61	9.27
Sikh Minority	15.37	21.70	21.37	31.43	17.84	19.06
Jain Minority	7.57	25.63	25.43	26.80	15.20	18.21
B. P. L.	1.28	4.70	8.89	13.62	2.31	2.99
Children with Special Needs (C.W.S.N.)	21.95	20.25	20.85	45.95	8.61	21.85
No. of clusters having gender gap > 10 %	23	39	91	70	23	43
No. of Block having gender gap > 10 %	0	1	8	10	0	4

7- Teacher (Class 1 to 12)

Indicators	Govt. and Local bodies	Pvt. Aided	Pvt. Unaided	Un-recognised	Total
Number of Teachers	Male	6,399	5,849	2,525	37
	Female	4,107	3,702	3,804	33
	Total	10,506	9,551	6,329	70
Percentage of female teachers to total teachers	39.09	38.76	60.10	47.14	44.02
Schools without a female teacher	Number	843	104	115	6
	%	37.67	14.04	12.67	37.50

7.1- Mediumwise Teacher (Class 1 to 12)

Medium	Govt. and Local bodies	Pvt. Aided	Pvt. Unaided	Un-recognised	Total
Marathi	10,236	7,864	2,732	39	20,871
English	22	188	2,900	31	3,141
Hindi	49	34	34	0	117
Urdu	199	1,465	663	0	2,327
Bangali	0	0	0	0	0
Gujrati	0	0	0	0	0
Kannada	0	0	0	0	0
Sindhi	0	0	0	0	0
Tamil	0	0	0	0	0
Telgu	0	0	0	0	0
Total	10,506	9,551	6,329	70	26,456

7.2- Castewise Teacher (Class 1 to 12)

Caste	Govt. and Local bodies	Pvt. Aided	Pvt. Unaided	Un-recognised	Total
All	10,506	9,551	6,329	70	26,456
Genral	4,309	5,320	4,113	32	13,774
SC	1,315	1,072	671	11	3,069
ST	728	407	206	4	1,345
OBC	2,387	1,696	828	14	4,925
VJ	451	356	160	5	972
NT	278	289	136	0	703
SBC	212	73	38	0	323
NT-B	211	90	61	2	364
NT-C	328	143	57	1	529
NT-D	287	105	59	1	452

Indicators		Govt. and Local bodies	Pvt. Aided	Pvt. Unaided	Un-recognised	Total
Schools with single teacher	Number	31	2	16	2	51
	%	1.39	0.27	1.76	12.50	1.31
PTR	Local Body-Only	Primary Section	Upper Primary Section	Secondary Section	Elementry Section	All (Class 1-12)
Pupil Teacher Ratio	26	35	32	22	34	32

Indicators		Govt. and Local bodies	Pvt. Aided	Pvt. Unaided	Un-recognised	Total
Primary schools having PTR more than 30	Number	180	55	104	1	340
	%	12.79	74.32	32.00	12.50	18.74
Upper Primary having PTR more than 35	Number	73	203	57	0	333
	%	8.98	40.68	16.67	0.00	20.10
Trained /Untrained Teacher	Primary Section	Upper Primary Section	Secondary Section	Higher Secondary Section	Elementry Section	All
Teacher All	11,863	7,142	5,681	1,770	19,005	26,456
Trained Teacher Number	11,520	7,090	5,601	1,686	18,610	25,897
%	97.11	99.27	98.59	95.25	97.92	97.89
Untrained Teacher All Number	343	52	80	84	395	559
%	2.89	0.73	1.41	4.75	2.08	2.11

8-Efficiency indicators

8.1 Annual Average Drop-out Rate

Social Groups	Primary			UpperPrimary		
	Boys	Girls	Total	Boys	Girls	Total
All Social Groups	1.52	1.42	1.47	1.47	2.32	1.86
General	2.21	2.21	2.21	2.59	3.00	2.78
Schedule Castes (SC)	0.52	0.68	0.60	1.68	2.61	2.12
Schedule Tribes (ST)	3.88	3.73	3.81	3.06	7.07	4.89
Other Backward Classes (OBC)	0.30	0.00	0.07	0.00	0.03	0.00
Vimukat Jatis (VJ)	15.02	16.33	15.63	13.85	15.67	14.66
Nomadic Tribes (NT)	16.37	12.95	14.81	16.41	18.14	17.20
Special Backward Classes (SBC)	0.00	0.00	0.00	0.00	0.00	0.00
Muslim	3.34	5.93	4.61	7.14	8.90	8.00

8.2 Transition Rate

Social Groups	Primary			UpperPrimary		
	Boys	Girls	Total	Boys	Girls	Total
All Social Groups	97.41	96.66	97.06	96.18	90.20	93.47
General	97.34	98.16	97.73	96.61	91.26	94.15
Schedule Castes (SC)	97.01	94.42	95.77	96.74	89.22	93.25
Schedule Tribes (ST)	91.52	90.99	91.27	84.86	81.00	83.24
Other Backward Classes (OBC)	98.97	96.54	97.85	96.82	96.82	93.88
VJ / NT	99.75	96.04	98.04	89.92	84.34	87.54
Special Backward Classes (SBC)	79.46	67.20	73.32	100.00	88.48	98.84
Muslim	96.13	97.17	96.64	89.26	85.28	87.35

8.3 Gender Parity Index (GPI)

Social Groups	Primary Section	Upper Primary Section	Secondary Section	Higher Secondary Section	Elementary Section	All (Class 1-12)
All Social Groups	0.87	0.85	0.77	0.69	0.86	0.83
General	0.87	0.87	0.81	0.74	0.87	0.85
Schedule Castes (SC)	0.90	0.87	0.79	0.79	0.89	0.86
Schedule Tribes (ST)	0.90	0.81	0.66	0.53	0.87	0.82
Other Backward Classes (OBC)	0.84	0.81	0.71	0.64	0.83	0.79
Vimukat Jatis (VJ)	0.85	0.78	0.66	0.55	0.82	0.77
Nomadic Tribes (NT)	0.88	0.83	0.70	0.61	0.86	0.81
Special Backward Classes (SBC)	0.84	0.85	0.77	0.37	0.85	0.77
Muslim	0.95	0.95	0.89	0.80	0.95	0.93

8.4 Retention Rate

Social Groups	Primary			UpperPrimary		
	Boys	Girls	Total	Boys	Girls	Total
All Social Groups	99.58	96.75	98.23	100.00	100.00	100.00
General	90.03	88.85	89.47	99.03	99.03	93.45
Schedule Castes (SC)	95.51	94.84	95.19	97.02	91.39	94.33
Schedule Tribes (ST)	81.68	74.89	78.36	87.20	81.24	84.60
Other Backward Classes (OBC)	100.00	100.00	100.00	100.00	100.00	100.00
Muslim	100.00	100.00	98.23	93.18	86.64	100.00

9. Right To Education (RTE) Information

Subject	Govt. & Local Bodies	Private Aided	Private Un-Aided	Unrecognised	Total	
Elementry Schools All(Classess Having 1 to 8)	2,236	694	837	16	3,783	
No of Schools CCE being implemented in school	No of Schools	2,217	657	671	9	3,554
	%	99.15	94.67	80.17	56.25	93.95
No of Schools having maintained pupil comulative records	No of Schools	2,216	652	679	9	3,556
	%	99.11	93.95	81.12	56.25	94.00
No. of Schools having shared pupil comulative records with parents	No of Schools	2,212	645	676	8	3,541
	%	98.93	92.94	80.76	50.00	93.60
No. of Schools having Constituted SMC	No of Schools	2,204	444	NA	NA	2,648
	%	98.57	63.98	NA	NA	90.38
No. of Schools having Constituted SMDC	No of Schools	76	117	NA	NA	193
	%	3.40	16.86	NA	NA	6.59
No. of Schools having Constituted SMC & SMDC are same	No of Schools	19	98	NA	NA	117
	%	0.85	14.12	NA	NA	3.99
Avg. total no. of SMC Members in schools	Male	8	5	NA	NA	6
	Female	6	4	NA	NA	5
Avg. no. of representative of parents / Guardians / PTA in SMC	Male	1	1	NA	NA	1
	Female	5	3	NA	NA	4
Avg. no. of representative of local authorities / local government /urban	Male	1	1	NA	NA	1
	Female	1	1	NA	NA	1
Avg. no. of SMC meetings held in previous year		6	2	NA	NA	4
No.. of Schools having prepared SDP		2,014	274	NA	NA	2,452
No. of Schools having maintained separate SMC bank accounts		2,186	296	NA	NA	2,574
Avg. no. of instructional days of school in previous year	Primary	233	222	215	238	228
	Upper Primary	222	170	126	87	180
	Secondary	226	210	196	131	206
	Higher Secondary	202	162	75	1	135
Avg. of staying childrens hours in schools per day	Primary	6	5	5	6	6
	Upper Primary	6	4	3	3	4
	Secondary	5	4	3	4	4
	Higher Secondary	5	4	3	1	4
Avg. of teachers working hours in school per day	Primary	6	5	5	6	6
	Upper Primary	6	4	3	3	5
	Secondary	5	4	3	4	4
	Higher Secondary	4	4	3	1	4
No of Schools having complete set of free text book received	Primary	2,028	254	71	1	2,354
	Upper Primary	712	196	32	1	941
No of Schools having TLE available for each grade	Primary	2,088	271	322	6	2,687
	Upper Primary	726	208	157	1	1,092
No of Schools having playing material, games and sports equipment available for each grade\	Primary	1,267	243	320	6	1,836
	Upper Primary	542	183	156	1	882
No. of Schools having any children enrolled in school special training	Schools	170	74	45	4	293
No of Children Enrolled for Special Training in Previous Year	Boys	453	67	221	0	741
	Girls	79	10	76	0	165
No of Children Provided for Special Training in Previous Year	Boys	1,002	74	301	4	1,381
	Girls	170	74	45	4	293

9. Right To Education (RTE) Information

Subject		Govt. & Local Bodies	Private Aided	Private Un-Aided	Unrecognised	Total
Elementary Schools All (Classes Having 1 to 8)		2,236	694	837	16	3,783
No of Children Enrolled for Special Training in Current Year	Boys	1,141	125	334	4	1,604
	Girls	168	136	92	4	400
No of Children Provided for Special Training in Current Year	Boys	1,528	243	336	4	2,111
	Girls	717	402	81	4	1,204
No. of Childrens completed special training during previous year	School Teachers	217	40	27	1	285
	Specially engaged	97	97	10	10	214
	Both	7	6	3	0	16
	NGO	6	2	0	0	8
	Other	4	0	0	0	4
Special training is conducted in	None	56	6	3	0	65
	School premises	275	33	24	0	332
	Other than School premises	146	23	12	0	181
	Both	17	4	5	1	27
	Residential	120	27	11	0	158
Type of Training	Non Residential	108	7	11	0	126
	Both	11	0	2	0	13

10. CWSN with Special Needs (Current Year)

Type of Facility	Elementary			Secondary / Hsecondary		
	Boys	Girls	Total	Boys	Girls	Total
Visual Impairment (Blindness)-TB	198	104	302	34	25	59
Visual Impairment (Low vision) -LV	1,116	968	2,084	193	178	371
Hearing impairment-HI	592	488	1,080	190	85	275
Speech impairment-SI	1,046	521	1,567	84	37	121
Loco Motor Impairment-OH	1,178	705	1,883	192	105	297
Mental Retardation-MR	1,463	793	2,256	46	22	68
Learning disability-LD	582	412	994	18	10	28
Cerebral Palsy-CP	95	65	160	11	2	13
Autism-ASD	45	38	83	1	1	2
Multiple disability-MD	253	154	407	16	3	19
Total	6,568	4,248	10,816	785	468	1,253
Grand Total (Class 1 to 12)	7,353	4,716	12,069			

11. Facilities provided to CWSN (Previous Year)

Type of Facility	Elementary			Secondary / Hsecondary		
	Boys	Girls	Total	Boys	Girls	Total
Brail Books	31	26	57	13	8	21
Brail Kit	18	20	38	4	0	4
Low vision Kit	13	15	28	1	2	3
Hearing aid	73	69	142	16	12	28
Braces	4	2	6	1	0	1
Crutches	3	2	5	0	0	0
Wheel Chair	102	52	154	3	4	7
Tri-Cycle	11	10	21	4	1	5
Caliper	24	25	49	3	2	5
Total	279	221	500	45	29	74
Grand Total (Class 1 to 12)	324	250	574			

Educational Development Index

Management	All	Local Body	Social	Tribal	Aided	UnAided
Indicator / District Ranks	16	19	24	13	15	15
Access	20	19	23	17	23	6
01. Density of Schools per 10 Sq.Km. All	3.86	2.34	0.07	0.01	0.69	0.89
02. Availability of schools per 1000 child population census 2001	6.37	3.67	0.11	0.02	1.13	1.47
03. Ratio of primary to Upper Primary Schools/Sections	1.85	2.69	1.63	0.80	0.54	1.75
Infrastructure	12	7	21	18	23	17
04. % of Schools with SCR>30	8.53	12.65	1.43	0.00	6.49	9.53
05. % of Schools with SCR>35	8.53	6.53	20.00	41.67	49.64	15.30
06. Percentage of Schools with 1:1 Classroom Teacher Ratio	66.28	86.85	64.29	33.33	27.71	60.53
07. % of Schools with Water facility	99.90	100.00	100.00	100.00	99.86	99.78
08. % of Schools with Boys Toilet	99.46	98.57	100.00	100.00	98.27	99.45
09. % of Schools with Girls Toilets	99.90	98.68	100.00	100.00	100.00	99.56
10. % of Schools with Ramp	69.69	97.71	40.00	16.67	39.39	46.56
11. % of Schools with Kitchen Shed (Gov & Aided)	98.11	81.37	45.71	91.67	61.04	27.61
Teacher	23	26	31	12	25	15
12. % of schools with female teachers (in schools with 2 and more teachers)	8.53	35.56	7.14	41.67	71.86	73.17
13. % of Schools with PTR>30	8.71	16.79	7.14	0.00	7.36	11.53
14. % of Schools with PTR>35	8.53	1.21	11.43	8.33	28.57	6.10
15. % of Single Teacher Schools	8.53	3.47	1.43	0.00	0.14	2.11
16. % without Professional Qualification	8.53	3.69	27.14	8.33	16.45	25.94
OutComes	14	15	18	12	7	23
17. Average number of instructional days -Primary	228.11	233.15	223.48	0.00	219.98	216.26
18. Average number of instructional days -Upper Primary	179.92	226.50	216.50	228.70	205.72	182.47
19. Average working hours for teachers-Primary	5.77	6.03	5.45	0.00	5.12	5.29
20. Average working hours for teachers-Upper Primary	4.57	5.86	5.47	5.72	5.12	4.56
21. % of change in enrollment in Gov schools over the previous year	-3.64	2.66	-14.39	9.34	-4.02	-10.93
22. Gross Enrollment Ratio	104.72	104.72	104.72	104.72	104.72	104.72
23. Retention Rate	98.23	98.23	98.23	98.23	98.23	98.23
24. Participation of SC children ((% of SC Population (2001 census)- % of SC Enrollment)	16.03	9.66	14.76	1.84	18.13	12.44
25. Participation of ST children ((% of ST Population (2001 census)- % of ST Enrollment)	4.92	44.01	7.18	91.31	3.10	2.37
26. Participation of Muslim children ((% of Muslim Population (2001 census)-% of Muslim Enrollment)	21.23	10.21	4.94	0.36	24.12	21.04
27. Ratio of Girls Enrollment to Boys Enrollment	0.86	0.98	0.55	0.61	0.93	0.66
28. DROPOUT RATE	1.63	1.63	1.63	1.63	1.63	1.63
29. Transition Rate for primary to upper primary	93.47	92.76	106.10	90.76	106.37	100.01

Schools ,Enrollment & Teachers (Class 1 to 12)

Management	Schools	Enrollments	Teachers	Classrooms	PTR	SCR
Department of Education	3	747	31	21	24.1	35.6
Zilla Parishad	2111	246432	9659	9594	25.5	25.7
MNC	89	17588	542	534	32.5	32.9
Nagar Palika	19	1817	70	66	26.0	27.5
Local body	0	0	0	0	0.0	0.0
Cantonment Board	0	0	0	0	0.0	0.0
Tribal/Social Welfare Dept.	0	0	0	0	0.0	0.0
Social Welfare	5	1120	40	40	28.0	28.0
Tribal Welfare	7	1885	66	56	28.6	33.7
Central Govt.	1	1983	49	42	40.5	47.2
Central School	0	0	0	0	0.0	0.0
Govt Military School	2	521	24	14	21.7	37.2
Navoday Vodyalay	1	483	25	12	19.3	40.3
Railway School	0	0	0	0	0.0	0.0
Gov & Local Body	2238	272576	10506	10379	25.9	26.3
Social Welfare Aided	43	10022	282	286	35.5	35.0
Tribal Welfare Aided	5	887	26	26	34.1	34.1
Pvt. Aided	676	360379	9116	6667	39.5	54.1
Partially Aided	17	5480	127	155	43.1	35.4
Pvt. Military School	0	0	0	0	0.0	0.0
Private Aided	741	376768	9551	7134	39.4	52.8
Social Welfare Unaided	22	1913	122	124	15.7	15.4
Tribal Welfare Unaided	0	0	0	0	0.0	0.0
Unaided	405	88085	2534	2595	34.8	33.9
Pvt. Unaided	16	4121	118	118	34.9	34.9
Permanent Unaided	445	103324	3480	3457	29.7	29.9
Self Finance	16	591	47	76	12.6	7.8
Vedic/sanskrit/Dharmic School	4	400	28	29	14.3	13.8
Madarsa recognized	0	0	0	0	0.0	0.0
Madarsa unrecognized	0	0	0	0	0.0	0.0
Others	0	0	0	0	0.0	0.0
No Response	0	0	0	0	0.0	0.0
Private Unaided	908	198434	6329	6399	31.4	31.0
Un-Recognised	16	1378	70	76	19.7	18.1
Grand Total	3903	849156	26456	23988	32.1	35.4