



## District Profile

Based on Unified District Information System for Education (UDISE), 2013-14

District : Jalna

### 1 – Demographic (Source : Census of India,2011)

	Male	Female	Person	Sex Ratio	Child Sex Ratio (0-6 years)
Population	1,015,116	943,367	1,958,483		
Literacy rate	85.3	61.3	73.6	929	847

### 2- Number of Schools by Management and Category (Class 1 to 12)

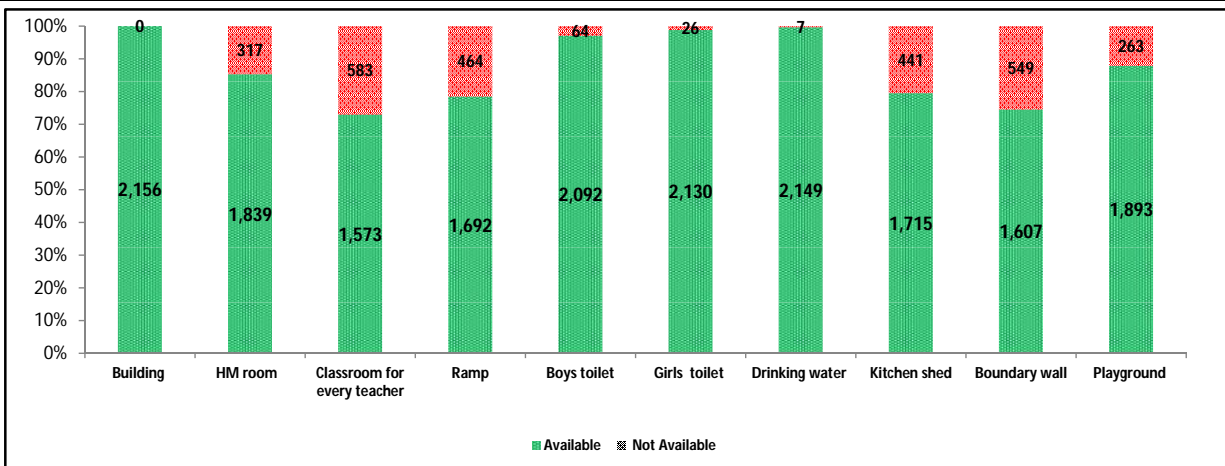
Indicator (Number of schools )	Govt. and Local bodies	Pvt. Aided	Pvt. Unaided	Un-recognised	Total
Primary (1-4/5)	990	34	110	1	1,135
Primary with Upper Primary (1-7/8)	509	66	43	0	618
Pri,Upper,Secondary with Hsecondary (1 to 12)	0	1	2	0	3
Only Upper Primary (5/6 to 7/8)	7	0	0	0	7
Upper,Secondary with Hsecondary (5/6 to 12)	2	75	8	0	85
Primary,Upperprimary with Secondary(1 to 10)	0	3	7	0	10
Upperprimary with Secondary(5/6 to 10)	38	82	40	0	160
Secondary Only (8/9 to 10)	0	15	50	0	65
Secondary with HSecondary(8/9 to 12)	0	12	11	0	23
Higher Secondary with college attached (11 to 12)	0	11	39	0	50
<b>Total</b>	<b>1,546</b>	<b>299</b>	<b>310</b>	<b>1</b>	<b>2,156</b>
Having Primary level classes	1,499	104	162	1	1,766
Having Upper Primary level classes	556	227	100	0	883
Having Secondary level classes	40	188	118	0	346
Having HigherSecondary level classes	2	99	60	0	161
Ratio of Primary to Upper Primary schools	State average				1.93
	District				2.00

### 3 - Number of Mediumwise Schools by Management .(Class 1 to 12)

Indicator (Number of Mediumwise schools )	Govt. and Local bodies	Pvt. Aided	Pvt. Unaided	Un-recognised	Total
Marathi	1,525	252	156	1	1,934
English	7	2	94	0	103
Hindi	0	9	1	0	10
Urdu	14	36	59	0	109
Bangali	0	0	0	0	0
Gujrati	0	0	0	0	0
Kannada	0	0	0	0	0
Sindhi	0	0	0	0	0
Tamil	0	0	0	0	0
Telgu	0	0	0	0	0
<b>Total</b>	<b>1,546</b>	<b>299</b>	<b>310</b>	<b>1</b>	<b>2,156</b>

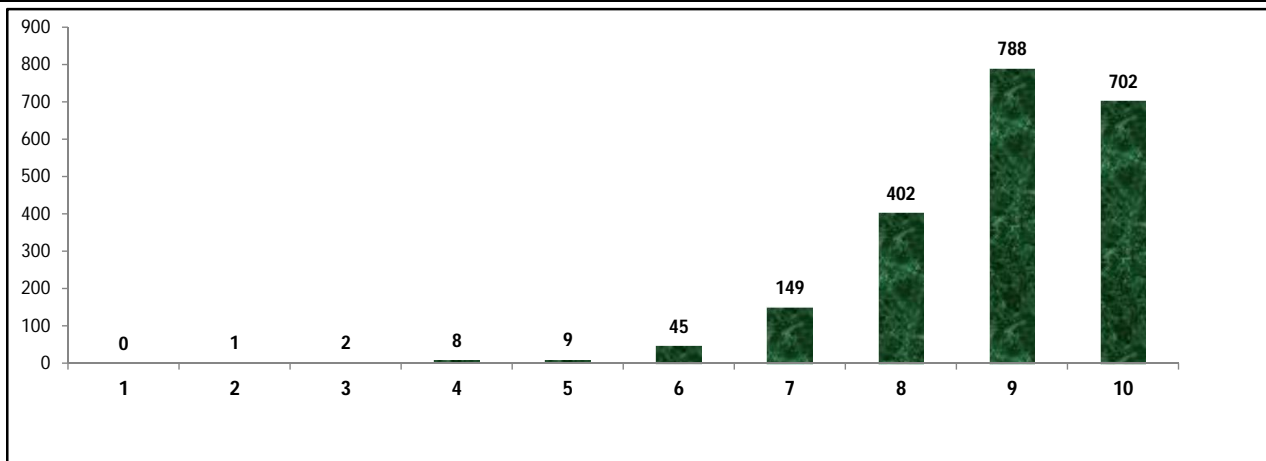
## 4 – Infrastructure at Elementry Level

**Status of Infrastructure Facilities in Schools (Numbers, All schools)**



Indicator : Schools with infrastructure facilities available (Sch.All)		Govt. and Local bodies	Pvt. Aided	Pvt. Unaided	Un-recognised	Total
<b>Total Schools</b>		<b>1546</b>	<b>299</b>	<b>310</b>	<b>1</b>	<b>2156</b>
1. Building	Number	1,546	299	310	1	2,156
	%	100.00	100.00	100.00	100.00	100.00
2. Office-cum-store-cum-HM room	Number	1,257	289	292	1	1,839
	%	81.31	96.66	94.19	100.00	85.30
3. One classroom for every teacher	Number	1,305	85	182	1	1,573
	%	84.41	28.43	58.71	100.00	72.96
4. Ramp	Number	1,407	161	124	0	1,692
	%	91.01	53.85	40.00	0.00	78.48
5. Separate toilet for boys	Number	1,503	283	305	1	2,092
	%	97.22	94.65	98.39	100.00	97.03
6. Separate toilet for girls	Number	1,528	297	304	1	2,130
	%	98.84	99.33	98.06	100.00	98.79
7. Drinking water facility	Number	1,540	299	309	1	2,149
	%	99.61	100.00	99.68	100.00	99.68
8. Kitchen shed (Gov & Aided Schools)	Number	1,512	203	NA	NA	1,715
	%	97.80	67.89	NA	NA	92.95
9. Boundary wall	Number	1,087	263	256	1	1,607
	%	70.31	87.96	82.58	100.00	74.54
10. Playground	Number	1,319	284	289	1	1,893
	%	85.32	94.98	93.23	100.00	87.80
<b>Indicators</b>		<b>Govt. and Local bodies</b>	<b>Pvt. Aided</b>	<b>Pvt. Unaided</b>	<b>Un-recognised</b>	<b>Total</b>
Number of classrooms(1 to 8)		6,675	1,917	1,309	4	9,905
Number of classrooms(9 to 10)		126	596	253	0	975
Number of classrooms(11 to 12)		6	434	197	0	637
<b>Student Classroom Ratio (SCR) Primary</b>		<b>23</b>	<b>UpperPri.</b>	<b>37</b>	<b>Elementry</b>	<b>32</b>
Primary schools having SCR more than 30	Number	162	26	28	0	216
	%	16.36	76.47	25.45	0.00	19.03
Upper Primary. schools having SCR more than 35	Number	154	183	53	0	390
	%	27.70	80.62	53.00	0.00	44.17
Schools fulfilling "10" infrastructure norms for building under RTE (Ele.Sch.)	Number	621	36	45	0	702
	%	40.17	12.50	16.61	0.00	33.33

**Number of schools by number of infrastructure elements compliance**



**5- Enrolment (Class 1 to 12)**

Number of students enrolled in		Govt. and Local bodies	Pvt. Aided	Pvt. Unaided	Un-recognised	Total
Primary Classes (1-5)	Boys	69,823	22,417	16,370	26	108,636
	Girls	68,981	19,275	9,769	16	98,041
	Total	138,804	41,692	26,139	42	206,677
Upper Primary Classes (6-8)	Boys	19,263	31,535	8,197	0	58,995
	Girls	21,148	26,406	5,547	0	53,101
	Total	40,411	57,941	13,744	0	112,096
Secondary Classes (9-10)	Boys	3,075	21,081	6,140	0	30,296
	Girls	2,718	16,715	4,180	0	23,613
	Total	5,793	37,796	10,320	0	53,909
Higher Secondary Classes (11-12)	Boys	104	15,836	4,864	0	20,804
	Girls	72	10,650	2,669	0	13,391
	Total	176	26,486	7,533	0	34,195
Elementary Classes (1-8)	Boys	<b>89,086</b>	<b>53,952</b>	<b>24,567</b>	<b>26</b>	<b>167,631</b>
	Girls	<b>90,129</b>	<b>45,681</b>	<b>15,316</b>	<b>16</b>	<b>151,142</b>
	Total	<b>179,215</b>	<b>99,633</b>	<b>39,883</b>	<b>42</b>	<b>318,773</b>
All Classes (1-12)	Boys	92,265	90,869	35,571	26	218,731
	Girls	92,919	73,046	22,165	16	188,146
	Total	185,184	163,915	57,736	42	406,877

**5.1- Castewise Enrolment (Class 1 to 12)**

Indicator	Primary	Upper Primary	Secondary	Higher Sec.	Elementry	All
All Social Groups	206,677	112,096	53,909	34,195	318,773	406,877
General	90,529	48,340	24,600	16,013	138,869	179,482
Schedule Castes (SC)	33,763	19,079	8,227	5,026	52,842	66,095
Schedule Tribes (ST)	5,961	2,788	1,279	782	8,749	10,810
Other Backward Classes (OBC)	76,424	41,889	19,803	12,374	118,313	150,490
Muslim	34,356	17,145	6,769	2,586	51,501	60,856
Nomadic Tribes (NT)	20,036	10,935	4,876	2,439	30,971	38,286
Vimukat Jatis (VJ)	20,634	9,699	3,997	2,186	30,333	36,516
Special Backward Classes (SBC)	1,373	893	551	200	2,266	3,017
Bouddhist Minority	12,604	6,175	2,423	1,529	18,779	22,731
Parshi Minority	34	38	40	81	72	193
Christan Minority	674	342	146	139	1,016	1,301
Sikh Minority	269	66	17	40	335	392
Jain Minority	601	323	171	426	924	1,521
B. P. L.	30,852	14,534	5,400	942	45,386	51,728
Children with Special Needs (C.W.S.N.)	3,152	1,153	352	51	4,305	4,708

## 5.2- Mediumwise Enrolment (Class 1 to 12)

Indicator (Number of Mediumwise schools )	Govt. and Local bodies	Pvt. Aided	Pvt. Unaided	Un-recognised	Total
Marathi	182,915	144,743	30,014	42	357,714
English	559	2,028	20,195	0	22,782
Hindi	0	3,895	200	0	4,095
Urdu	1,710	13,249	7,327	0	22,286
Bangali	0	0	0	0	0
Gujrati	0	0	0	0	0
Kannada	0	0	0	0	0
Sindhi	0	0	0	0	0
Tamil	0	0	0	0	0
Telgu	0	0	0	0	0
<b>Total</b>	<b>185,184</b>	<b>163,915</b>	<b>57,736</b>	<b>42</b>	<b>406,877</b>
School size (Distribution of schools by Enrolment)	Govt. and Local bodies	Pvt. Aided	Pvt. Unaided	Un-recognised	Total
Less than 10	28	0	3	0	31
11-20	132	3	20	0	155
21-30	237	1	12	0	250
31-60	277	4	42	1	324
61-150	399	22	104	0	525
More than 150	473	269	129	0	871

## 6- Gender Gap in Enrolment (in %)

Indicator	Primary	Upper Primary	Secondary	Higher Secondary	Elementry	All
<b>All Social Groups</b>	<b>5.13</b>	<b>5.26</b>	<b>12.40</b>	<b>21.68</b>	<b>5.17</b>	<b>7.52</b>
General	5.52	4.05	10.46	19.45	5.01	7.04
Schedule Castes (SC)	2.98	5.99	15.25	26.06	4.07	7.13
Schedule Tribes (ST)	5.39	10.55	26.04	28.13	7.03	10.80
Other Backward Classes (OBC)	5.59	5.97	12.73	18.00	6.09	6.07
Muslim	2.02	2.99	12.66	15.70	2.34	4.06
Nomadic Tribes (NT)	3.93	4.34	11.03	26.20	4.08	6.37
Vimukat Jatis (VJ)	6.18	7.85	17.44	33.67	6.72	9.50
Special Backward Classes (SBC)	7.36	4.14	1.63	1.63	6.09	6.07
Bouddhist Minority	3.86	7.63	20.35	29.23	5.10	8.35
Parshi Minority	41.18	47.37	-10.00	-43.21	44.44	-3.63
Christan Minority	-0.89	-4.09	-2.74	3.60	-1.97	-1.46
Sikh Minority	11.52	0.00	76.47	25.00	9.25	13.78
Jain Minority	6.49	0.31	1.75	28.17	4.33	10.72
B. P. L.	9.27	6.65	4.96	14.44	8.43	8.18
Children with Special Needs (C.W.S.N.)	21.83	9.80	23.30	25.49	-1.97	19.03
No. of clusters having gender gap > 10 %	8	17	62	51	6	17
No. of Block having gender gap > 10 %	0	0	7	8	0	0

## 7- Teacher (Class 1 to 12)

Indicators	Govt. and Local bodies	Pvt. Aided	Pvt. Unaided	Un-recognised	Total	
Number of Teachers	Male	4,814	3,168	1,183	4	9,169
	Female	1,755	781	605	0	3,141
	<b>Total</b>	<b>6,569</b>	<b>3,949</b>	<b>1,788</b>	<b>4</b>	<b>12,310</b>
Percentage of female teachers to total teachers		26.72	19.78	33.84	0.00	25.52
Schools without a female teacher	<b>Number</b>	<b>789</b>	<b>99</b>	<b>113</b>	<b>1</b>	<b>1,002</b>
	<b>%</b>	<b>51.03</b>	<b>33.11</b>	<b>36.45</b>	<b>100.00</b>	<b>46.47</b>

### 7.1- Mediumwise Teacher (Class 1 to 12)

Medium	Govt. and Local bodies	Pvt. Aided	Pvt. Unaided	Un-recognised	Total
Marathi	6,493	3,480	892	4	10,869
English	25	47	636	0	708
Hindi	0	98	7	0	105
Urdu	51	324	253	0	628
Bangali	0	0	0	0	0
Gujrati	0	0	0	0	0
Kannada	0	0	0	0	0
Sindhi	0	0	0	0	0
Tamil	0	0	0	0	0
Telgu	0	0	0	0	0
<b>Total</b>	<b>6,569</b>	<b>3,949</b>	<b>1,788</b>	<b>4</b>	<b>12,310</b>

### 7.2- Castewise Teacher (Class 1 to 12)

Caste	Govt. and Local bodies	Pvt. Aided	Pvt. Unaided	Un-recognised	Total
All	6,569	3,949	1,788	4	12,310
Genral	2,894	2,186	1,071	4	6,155
SC	859	449	202	0	1,510
ST	341	161	74	0	576
OBC	1,202	641	266	0	2,109
VJ	347	233	70	0	650
NT	0	0	0	0	0
SBC	136	39	21	0	196
NT-B	124	44	25	0	193
NT-C	278	82	32	0	392
NT-D	388	114	27	0	529

Indicators		Govt. and Local bodies	Pvt. Aided	Pvt. Unaided	Un-recognised	Total
Schools with single teacher	Number	20	0	6	0	26
	%	1.29	0.00	1.94	0.00	1.21
PTR	<b>Local Body-Only</b>	<b>Primary Section</b>	<b>Upper Primary Section</b>	<b>Secondary Section</b>	<b>Elementry Section</b>	<b>All (Class 1-12)</b>
Pupil Teacher Ratio	28	35	34	24	34	33

Indicators		Govt. and Local bodies	Pvt. Aided	Pvt. Unaided	Un-recognised	Total
Primary schools having PTR more than 30	Number	207	25	36	0	268
	%	20.91	73.53	32.73	0.00	23.61
Upper Primary having PTR more than 35	Number	54	108	34	0	196
	%	9.71	47.58	34.00	0.00	22.20
Trained /Untrained Teacher	<b>Primary Section</b>	<b>Upper Primary Section</b>	<b>Secondary Section</b>	<b>Higher Secondary Section</b>	<b>Elementry Section</b>	<b>All</b>
Teacher All	5,974	3,310	2,222	804	9,284	12,310
Trained Teacher Number	5,853	3,296	2,213	800	9,149	12,162
%	97.97	99.58	99.59	99.50	98.55	98.80
Untrained Teacher All Number	121	14	9	4	135	148
%	2.03	0.42	0.41	0.50	1.45	1.20

## 8-Efficiency indicators

### 8.1 Annual Average Drop-out Rate

Social Groups	Primary			UpperPrimary		
	Boys	Girls	Total	Boys	Girls	Total
All Social Groups	3.71	2.64	3.20	4.63	5.15	4.88
General	7.01	5.14	7.01	9.32	8.23	8.80
Schedule Castes (SC)	4.06	3.36	3.72	4.92	8.14	6.46
Schedule Tribes (ST)	11.59	10.14	10.91	12.19	17.96	14.87
Other Backward Classes (OBC)	0.00	0.00	0.00	0.00	0.00	0.00
Vimukat Jatis (VJ)	0.00	2.71	1.23	0.57	1.76	1.12
Nomadic Tribes (NT)	6.49	1.33	4.07	6.69	7.97	7.31
Special Backward Classes (SBC)	42.24	43.86	43.02	8.64	19.25	14.05
Muslim	3.37	4.67	4.02	8.04	4.97	6.58

### 8.2 Transition Rate

Social Groups	Primary			UpperPrimary		
	Boys	Girls	Total	Boys	Girls	Total
All Social Groups	95.95	97.02	96.46	92.49	85.61	89.30
General	95.05	96.46	95.73	95.32	89.54	92.59
Schedule Castes (SC)	96.56	99.80	98.12	90.94	84.99	88.28
Schedule Tribes (ST)	89.03	91.22	90.06	100.00	84.45	96.32
Other Backward Classes (OBC)	97.22	96.80	97.02	89.16	89.16	85.52
VJ / NT	95.97	96.97	96.45	87.97	81.02	84.80
Special Backward Classes (SBC)	100.00	100.00	100.00	100.00	100.00	100.00
Muslim	90.52	97.47	93.84	89.77	80.95	85.71

### 8.3 Gender Parity Index (GPI)

Social Groups	Primary Section	Upper Primary Section	Secondary Section	Higher Secondary Section	Elementary Section	All (Class 1-12)
All Social Groups	0.90	0.90	0.78	0.64	0.90	0.86
General	0.90	0.92	0.81	0.67	0.90	0.87
Schedule Castes (SC)	0.94	0.89	0.74	0.74	0.92	0.87
Schedule Tribes (ST)	0.90	0.81	0.59	0.56	0.87	0.80
Other Backward Classes (OBC)	0.89	0.89	0.77	0.63	0.89	0.85
Vimukat Jatis (VJ)	0.88	0.85	0.70	0.50	0.87	0.83
Nomadic Tribes (NT)	0.92	0.92	0.80	0.58	0.92	0.88
Special Backward Classes (SBC)	0.86	0.92	0.97	0.69	0.89	0.89
Muslim	0.96	0.94	0.78	0.73	0.95	0.92

### 8.4 Retention Rate

Social Groups	Primary			UpperPrimary		
	Boys	Girls	Total	Boys	Girls	Total
All Social Groups	82.69	84.61	83.60	89.37	89.37	86.87
General	80.23	82.31	81.22	82.78	82.78	79.01
Schedule Castes (SC)	83.53	84.70	84.09	89.29	79.51	84.63
Schedule Tribes (ST)	64.32	70.95	67.26	72.40	61.08	67.21
Other Backward Classes (OBC)	87.22	88.68	87.91	99.93	95.65	97.90
Muslim	95.25	92.92	83.60	84.48	72.97	86.87

## 9. Right To Education (RTE) Information

Subject	Govt. & Local Bodies	Private Aided	Private Un-Aided	Unrecognised	Total	
<b>Elementry Schools All(Classess Having 1 to 8)</b>		<b>1,546</b>	<b>288</b>	<b>271</b>	<b>1</b>	<b>2,106</b>
No of Schools CCE being implemented in school	No of Schools	1,544	281	234	0	2,059
	%	<b>99.87</b>	<b>97.57</b>	<b>86.35</b>	<b>0.00</b>	<b>97.77</b>
No of Schools having maintained pupil comulative records	No of Schools	1,545	284	229	0	2,058
	%	<b>99.94</b>	<b>98.61</b>	<b>84.50</b>	<b>0.00</b>	<b>97.72</b>
No. of Schools having shared pupil comulative records with parents	No of Schools	1,545	284	226	0	2,055
	%	<b>99.94</b>	<b>98.61</b>	<b>83.39</b>	<b>0.00</b>	<b>97.58</b>
No. of Schools having Constituted SMC	No of Schools	1,527	249	NA	NA	1,776
	%	<b>98.77</b>	<b>86.46</b>	<b>NA</b>	<b>NA</b>	<b>96.84</b>
No. of Schools having Constituted SMDC	No of Schools	36	125	NA	NA	161
	%	<b>2.33</b>	<b>43.40</b>	<b>NA</b>	<b>NA</b>	<b>8.78</b>
No. of Schools having Constituted SMC & SMDC are same	No of Schools	17	72	NA	NA	89
	%	<b>1.10</b>	<b>25.00</b>	<b>NA</b>	<b>NA</b>	<b>4.85</b>
Avg. total no. of SMC Members in schools	Male	7	7	NA	NA	7
	Female	6	5	NA	NA	6
Avg. no. of representative of parents / Guardians / PTA in SMC	Male	1	1	NA	NA	1
	Female	5	4	NA	NA	5
Avg. no. of representative of local authorities / local government /urban	Male	1	1	NA	NA	1
	Female	0	1	NA	NA	0
Avg. no. of SMC meetings held in previous year		8	4	NA	NA	7
No.. of Schools having prepared SDP		1,470	193	NA	NA	1,708
No. of Schools having maintained separate SMC bank accounts		1,531	200	NA	NA	1,767
Avg. no. of instructional days of school in previous year	Primary	232	231	228	232	232
	Upper Primary	232	207	144	2	211
	Secondary	219	223	210	1	219
	Higher Secondary	230	203	112	0	169
Avg. of staying childrens hours in schools per day	Primary	6	6	6	5	6
	Upper Primary	6	5	4	2	5
	Secondary	5	5	5	1	5
	Higher Secondary	6	5	5	0	5
Avg. of teachers working hours in school per day	Primary	7	8	7	6	7
	Upper Primary	7	6	4	2	7
	Secondary	6	6	6	1	6
	Higher Secondary	6	6	5	0	6
No of Schools having complete set of free text book received	Primary	1,489	94	15	1	1,599
	Upper Primary	512	86	5	2	605
No of Schools having TLE available for each grade	Primary	1,475	95	87	1	1,658
	Upper Primary	512	84	31	0	627
No of Schools having playing material, games and sports equipment available for each grade\	Primary	908	78	87	1	1,074
	Upper Primary	397	68	31	2	498
No. of Schools having any children enrolled in school special training	Schools	33	241	13	2	289
No of Children Enrolled for Special Training in Previous Year	Boys	64	89	0	0	153
	Girls	11	14	0	0	25
No of Children Provided for Special Training in Previous Year	Boys	250	241	24	2	517
	Girls	33	241	13	2	289

## 9. Right To Education (RTE) Information

Subject		Govt. & Local Bodies	Private Aided	Private Un-Aided	Unrecognised	Total
<b>Elementary Schools All (Classes Having 1 to 8)</b>		<b>1,546</b>	<b>288</b>	<b>271</b>	<b>1</b>	<b>2,106</b>
No of Children Enrolled for Special Training in Current Year	Boys	285	252	37	0	574
	Girls	69	26	4	0	99
No of Children Provided for Special Training in Current Year	Boys	643	415	38	2	1,098
	Girls	62	38	8	2	110
No. of Childrens completed special training during previous year	School Teachers	35	5	2	0	42
	Specially engaged	116	116	5	5	242
	Both	0	0	1	0	1
	NGO	0	0	0	0	0
	Other	0	0	0	0	0
Special training is conducted in	None	0	0	0	0	0
	School premises	104	12	2	0	118
	Other than School premises	34	3	0	0	37
	Both	9	1	0	0	10
Type of Training	Residential	185	24	8	0	217
	Non Residential	40	4	8	0	52
	Both	0	1	2	0	3

## 10. CWSN with Special Needs (Current Year)

Type of Facility	Elementary			Secondary / Hsecondary		
	Boys	Girls	Total	Boys	Girls	Total
Visual Impairment (Blindness)-TB	183	96	279	44	14	58
Visual Impairment (Low vision) -LV	396	377	773	50	37	87
Hearing impairment-HI	272	174	446	20	15	35
Speech impairment-SI	283	177	460	22	6	28
Loco Motor Impairment-OH	581	338	919	98	66	164
Mental Retardation-MR	488	329	817	8	1	9
Learning disability-LD	175	136	311	0	9	9
Cerebral Palsy-CP	16	22	38	1	0	1
Autism-ASD	29	21	50	2	4	6
Multiple disability-MD	130	82	212	4	2	6
<b>Total</b>	<b>2,553</b>	<b>1,752</b>	<b>4,305</b>	<b>249</b>	<b>154</b>	<b>403</b>
<b>Grand Total (Class 1 to 12)</b>	<b>2,802</b>	<b>1,906</b>	<b>4,708</b>			

## 11. Facilities provided to CWSN (Previous Year)

Type of Facility	Elementary			Secondary / Hsecondary		
	Boys	Girls	Total	Boys	Girls	Total
Brail Books	11	8	19	1	0	1
Brail Kit	8	7	15	1	0	1
Low vision Kit	5	5	10	1	0	1
Hearing aid	18	16	34	1	2	3
Braces	0	0	0	0	0	0
Crutches	1	0	1	0	0	0
Wheel Chair	30	19	49	0	0	0
Tri-Cycle	10	7	17	3	1	4
Caliper	12	10	22	1	0	1
<b>Total</b>	<b>95</b>	<b>72</b>	<b>167</b>	<b>8</b>	<b>3</b>	<b>11</b>
<b>Grand Total (Class 1 to 12)</b>	<b>103</b>	<b>75</b>	<b>178</b>			



## Educational Development Index

Management	All	Local Body	Social	Trible	Aided	UnAided
<b>Indicator / District Ranks</b>	<b>20</b>	<b>14</b>	<b>21</b>	<b>30</b>	<b>29</b>	<b>21</b>
<b>Access</b>	<b>27</b>	<b>18</b>	<b>19</b>	<b>31</b>	<b>33</b>	<b>16</b>
01. Density of Schools per 10 Sq.Km. All	2.79	2.20	0.04	0.00	0.36	0.39
02. Availability of schools per 1000 child population census 2001	6.55	3.62	0.10	0.01	0.84	0.92
03. Ratio of primary to Upper Primary Schools/Sections	2.00	2.75	1.13	1.00	0.39	1.66
<b>Infrastructure</b>	<b>13</b>	<b>18</b>	<b>29</b>	<b>13</b>	<b>33</b>	<b>14</b>
04. % of Schools with SCR>30	9.09	5.99	0.00	0.00	9.42	9.27
05. % of Schools with SCR>35	9.09	10.05	36.36	50.00	62.68	17.55
06. Percentage of Schools with 1:1 Classroom Teacher Ratio	72.96	81.07	54.55	0.00	27.17	58.94
07. % of Schools with Water facility	99.68	100.00	100.00	100.00	100.00	99.67
08. % of Schools with Boys Toilet	97.03	99.82	96.97	100.00	94.20	98.34
09. % of Schools with Girls Toilets	98.79	100.00	93.94	100.00	99.28	98.01
10. % of Schools with Ramp	78.48	96.94	54.55	50.00	53.62	39.74
11. % of Schools with Kitchen Shead ( Gov & Aided)	97.80	97.48	63.64	100.00	76.81	75.50
<b>Teacher</b>	<b>29</b>	<b>32</b>	<b>21</b>	<b>34</b>	<b>33</b>	<b>32</b>
12. % of schools with female teachers ( in schools with 2 and more teachers)	9.09	25.54	0.00	0.00	48.19	41.72
13. % of Schools with PTR>30	12.43	8.11	0.00	0.00	9.06	11.92
14. % of Schools with PTR>35	9.09	3.11	15.15	0.00	38.04	10.93
15. % of Single Teacher Schools	9.09	1.35	0.00	0.00	0.00	1.99
16. % without Professional Qualification	9.09	8.47	0.00	50.00	4.71	5.63
<b>OutComes</b>	<b>21</b>	<b>7</b>	<b>14</b>	<b>26</b>	<b>20</b>	<b>18</b>
17. Average number of instructional days -Primary	231.59	232.12	232.00	0.00	230.34	228.10
18. Average number of instructional days -Upper Primary	210.71	231.98	228.87	232.00	231.61	226.07
19. Average working hours for teachers-Primary	7.24	7.24	7.48	0.00	7.43	6.97
20. Average working hours for teachers-Upper Primary	6.57	7.28	7.40	6.90	7.25	6.67
21. % of change in enrollment in Gov schools over the previous year	-2.31	2.73	-3.87	3.50	-3.92	-14.12
22. Gross Enrollment Ratio	96.85	96.85	96.85	96.85	96.85	96.85
23. Retention Rate	83.60	83.60	83.60	83.60	83.60	83.60
24. Participation of SC children ((% of SC Population (2001 census)- % of SC Enrollment)	16.24	15.94	25.60	0.12	15.25	10.86
25. Participation of ST children ((% of ST Population (2001 census)- % of ST Enrollment)	2.66	8.21	2.52	99.15	1.89	2.18
26. Participation of Muslim children ((% of Muslim Population (2001 census)-% of Muslim Enrollment)	14.96	18.65	1.61	0.00	16.37	17.68
27. Ratio of Girls Enrollment to Boys Enrollment	0.90	0.98	0.48	0.47	0.87	0.63
28. DROPOUT RATE	3.89	3.89	3.89	3.89	3.89	3.89
29. Transition Rate for primary to upper primary	89.30	83.36	102.88	77.11	113.96	102.20

<b>Schools ,Enrollment &amp; Teachers (Class 1 to 12 )</b>						
<b>Management</b>	<b>Schools</b>	<b>Enrollments</b>	<b>Teachers</b>	<b>Classrooms</b>	<b>PTR</b>	<b>SCR</b>
Department of Education	7	559	25	14	22.4	39.9
Zilla Parishad	1514	181302	6385	6668	28.4	27.2
MNC	0	0	0	0	0.0	0.0
Nagar Palika	21	2285	125	94	18.3	24.3
Local body	0	0	0	0	0.0	0.0
Cantonment Board	0	0	0	0	0.0	0.0
Tribal/Social Welfare Dept.	0	0	0	0	0.0	0.0
Social Welfare	3	571	11	17	51.9	33.6
Tribal Welfare	0	0	0	0	0.0	0.0
Central Govt.	0	0	0	0	0.0	0.0
Central School	0	0	0	0	0.0	0.0
Govt Military School	0	0	0	0	0.0	0.0
Navoday Vodyalay	1	467	23	14	20.3	33.4
Railway School	0	0	0	0	0.0	0.0
<b>Gov &amp; Local Body</b>	<b>1546</b>	<b>185184</b>	<b>6569</b>	<b>6807</b>	<b>28.2</b>	<b>27.2</b>
Social Welfare Aided	21	4443	145	136	30.6	32.7
Tribal Welfare Aided	2	828	28	22	29.6	37.6
Pvt. Aided	272	157336	3752	2757	41.9	57.1
Partially Aided	4	1308	24	32	54.5	40.9
Pvt. Military School	0	0	0	0	0.0	0.0
<b>Private Aided</b>	<b>299</b>	<b>163915</b>	<b>3949</b>	<b>2947</b>	<b>41.5</b>	<b>55.6</b>
Social Welfare Unaided	9	1013	62	58	16.3	17.5
Tribal Welfare Unaided	0	0	0	0	0.0	0.0
Unaided	133	28413	801	718	35.5	39.6
Pvt. Unaided	0	0	0	0	0.0	0.0
Permanent Unaided	130	26350	824	857	32.0	30.7
Self Finance	31	1072	74	79	14.5	13.6
Vedic/sanskrut/Dharmic School	0	0	0	0	0.0	0.0
Madarsa recognized	2	78	5	5	15.6	15.6
Madarsa unrecognized	5	810	22	42	36.8	19.3
Others	0	0	0	0	0.0	0.0
No Response	0	0	0	0	0.0	0.0
<b>Private Unaided</b>	<b>310</b>	<b>57736</b>	<b>1788</b>	<b>1759</b>	<b>32.3</b>	<b>32.8</b>
<b>Un-Recognised</b>	<b>1</b>	<b>42</b>	<b>4</b>	<b>4</b>	<b>10.5</b>	<b>10.5</b>
<b>Grand Total</b>	<b>2156</b>	<b>406877</b>	<b>12310</b>	<b>11517</b>	<b>33.1</b>	<b>35.3</b>