



State Profile

Based on Unified District Information System for Education (UDISE), 2013-14

State : Maharashtra

1 – Demographic (Source : Census of India,2011)

	Male	Female	Person	Sex Ratio	Child Sex Ratio (0-6 years)
Population	58,361,397	54,011,575	112,372,972		
Literacy rate	89.8	75.5	82.9	925	883

2- Number of Schools by Management and Category (Class 1 to 12)

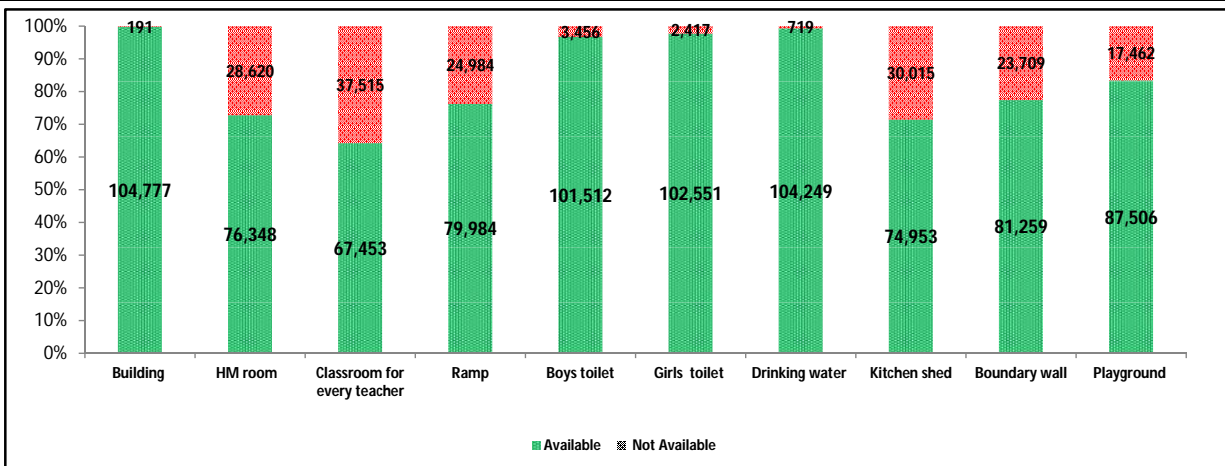
Indicator (Number of schools)	Govt. and Local bodies	Pvt. Aided	Pvt. Unaided	Un-recognised	Total
Primary (1-4/5)	44,867	3,117	4,560	447	52,991
Primary with Upper Primary (1-7/8)	20,992	3,669	3,357	127	28,145
Pri,Upper,Secondary with Hsecondary (1 to 12)	187	95	307	1	590
Only Upper Primary (5/6 to 7/8)	56	8	10	6	80
Upper,Secondary with Hsecondary (5/6 to 12)	201	4,167	370	2	4,740
Primary,Upperprimary with Secondary(1 to 10)	455	188	908	7	1,558
Upperprimary with Secondary(5/6 to 10)	548	6,247	1,262	17	8,074
Secondary Only (8/9 to 10)	273	2,923	2,840	86	6,122
Secondary with HSecondary(8/9 to 12)	17	574	369	2	962
Higher Secondary with college attached (11 to 12)	21	707	974	4	1,706
Total	67,617	21,695	14,957	699	104,968
Having Primary level classes	66,501	7,069	9,132	582	83,284
Having Upper Primary level classes	22,439	14,374	6,214	160	43,187
Having Secondary level classes	1,681	14,194	6,056	115	22,046
Having HigherSecondary level classes	426	5,543	2,020	9	7,998
Ratio of Primary to Upper Primary schools	State average				1.93
	State				1.93

3 - Number of Mediumwise Schools by Management .(Class 1 to 12)

Indicator (Number of Mediumwise schools)	Govt. and Local bodies	Pvt. Aided	Pvt. Unaided	Un-recognised	Total
Marathi	63,490	18,690	5,060	186	87,426
English	325	683	8,559	477	10,044
Hindi	677	638	394	18	1,727
Urdu	2,571	1,418	893	18	4,900
Bangali	54	2	0	0	56
Gujrati	120	162	29	0	311
Kannada	262	71	11	0	344
Sindhi	6	18	4	0	28
Tamil	43	4	2	0	49
Telgu	69	9	5	0	83
Total	67,617	21,695	14,957	699	104,968

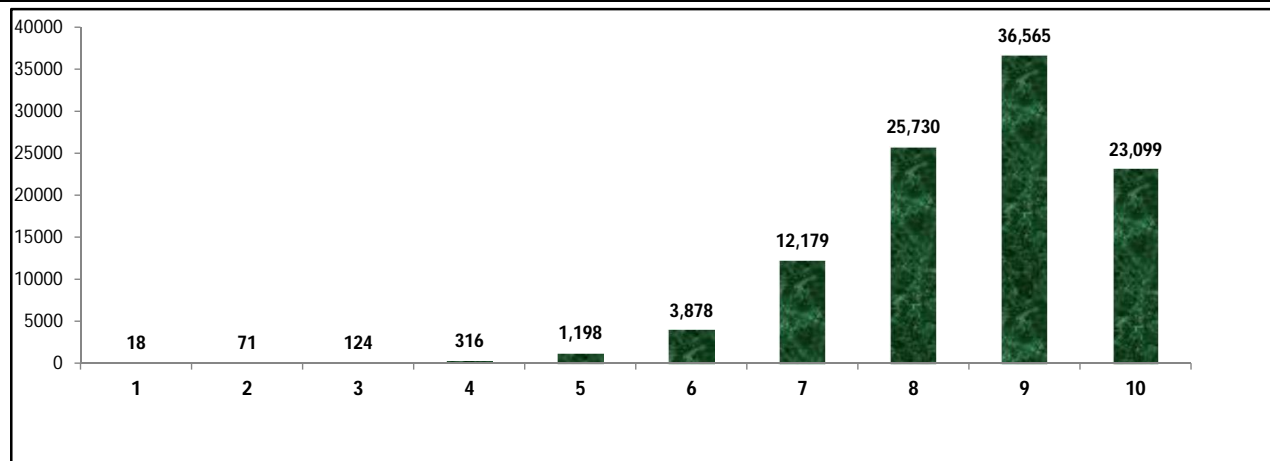
4 – Infrastructure at Elementry Level

Status of Infrastructure Facilities in Schools (Numbers, All schools)



Indicator : Schools with infrastructure facilities available (Sch.All)		Govt. and Local bodies	Pvt. Aided	Pvt. Unaided	Un-recognised	Total
Total Schools		67617	21695	14957	699	104968
1. Building	Number	67,441	21,684	14,954	698	104,777
	%	99.74	99.95	99.98	99.86	99.82
2. Office-cum-store-cum-HM room	Number	41,964	19,814	13,950	620	76,348
	%	62.06	91.33	93.27	88.70	72.73
3. One classroom for every teacher	Number	54,488	5,509	7,028	428	67,453
	%	80.58	25.39	46.99	61.23	64.26
4. Ramp	Number	62,378	10,945	6,368	293	79,984
	%	92.25	50.45	42.58	41.92	76.20
5. Separate toilet for boys	Number	65,531	20,668	14,635	678	101,512
	%	96.91	95.27	97.85	97.00	96.71
6. Separate toilet for girls	Number	65,786	21,370	14,709	686	102,551
	%	97.29	98.50	98.34	98.14	97.70
7. Drinking water facility	Number	66,927	21,679	14,944	699	104,249
	%	98.98	99.93	99.91	100.00	99.32
8. Kitchen shed (Gov & Aided Schools)	Number	60,524	14,429	NA	NA	74,953
	%	89.51	66.51	NA	NA	83.92
9. Boundary wall	Number	49,231	18,327	13,139	562	81,259
	%	72.81	84.48	87.85	80.40	77.41
10. Playground	Number	52,832	20,403	13,703	568	87,506
	%	78.13	94.04	91.62	81.26	83.36
Indicators		Govt. and Local bodies	Pvt. Aided	Pvt. Unaided	Un-recognised	Total
Number of classrooms(1 to 8)		262,851	138,387	96,534	3,543	501,315
Number of classrooms(9 to 10)		4,895	48,717	16,216	196	70,024
Number of classrooms(11 to 12)		1,347	27,217	7,742	23	36,329
Student Classroom Ratio (SCR) Primary		24	UpperPri.	37	Elementry	32
Primary schools having SCR more than 30	Number	5,028	1,950	1,611	99	8,688
	%	11.21	62.56	35.33	22.15	16.40
Upper Primary. schools having SCR more than 35	Number	4,259	9,565	2,966	31	16,821
	%	18.98	66.54	47.73	19.38	38.95
Schools fulfilling "10" infrastructure norms for building under RTE (Ele.Sch.)	Number	19,342	1,772	1,881	104	23,099
	%	28.61	8.44	13.45	14.96	22.37

Number of schools by number of infrastructure elements compliance



5- Enrolment (Class 1 to 12)

Number of students enrolled in		Govt. and Local bodies	Pvt. Aided	Pvt. Unaided	Un-recognised	Total
Primary Classes (1-5)	Boys	2,492,474	1,440,760	1,420,567	41,038	5,394,839
	Girls	2,454,390	1,279,669	1,031,337	28,574	4,793,970
	Total	4,946,864	2,720,429	2,451,904	69,612	10,188,809
Upper Primary Classes (6-8)	Boys	690,590	1,920,156	584,645	4,512	3,199,903
	Girls	697,276	1,659,935	409,266	3,602	2,770,079
	Total	1,387,866	3,580,091	993,911	8,114	5,969,982
Secondary Classes (9-10)	Boys	119,730	1,435,321	365,376	2,069	1,922,496
	Girls	108,115	1,235,458	263,071	1,711	1,608,355
	Total	227,845	2,670,779	628,447	3,780	3,530,851
Higher Secondary Classes (11-12)	Boys	37,502	1,023,614	215,045	471	1,276,632
	Girls	32,192	923,168	148,055	301	1,103,716
	Total	69,694	1,946,782	363,100	772	2,380,348
Elementary Classes (1-8)	Boys	3,183,064	3,360,916	2,005,212	45,550	8,594,742
	Girls	3,151,666	2,939,604	1,440,603	32,176	7,564,049
	Total	6,334,730	6,300,520	3,445,815	77,726	16,158,791
All Classes (1-12)	Boys	3,340,296	5,819,851	2,585,633	48,090	11,793,870
	Girls	3,291,973	5,098,230	1,851,729	34,188	10,276,120
	Total	6,632,269	10,918,081	4,437,362	82,278	22,069,990

5.1- Castewise Enrolment (Class 1 to 12)

Indicator	Primary	Upper Primary	Secondary	Higher Sec.	Elementry	All
All Social Groups	10,188,809	5,969,982	3,530,851	2,380,348	16,158,791	22,069,990
General	4,145,673	2,411,056	1,460,747	1,051,393	6,556,729	9,068,869
Schedule Castes (SC)	1,359,224	845,330	498,400	308,985	2,204,554	3,011,939
Schedule Tribes (ST)	1,265,274	631,490	299,813	155,907	1,896,764	2,352,484
Other Backward Classes (OBC)	3,418,638	2,082,106	1,271,891	864,063	5,500,744	7,636,698
Muslim	1,389,391	740,846	375,311	177,658	2,130,237	2,683,206
Nomadic Tribes (NT)	736,589	435,631	243,517	144,573	1,172,220	1,560,310
Vimukat Jatis (VJ)	388,485	206,027	99,364	57,875	594,512	751,751
Special Backward Classes (SBC)	138,487	97,291	62,507	40,993	235,778	339,278
Bouddhist Minority	331,352	191,080	108,838	59,334	522,432	690,604
Parshi Minority	4,309	2,976	2,132	1,782	7,285	11,199
Christan Minority	52,008	35,296	23,350	16,013	87,304	126,667
Sikh Minority	15,841	10,407	6,940	6,182	26,248	39,370
Jain Minority	53,344	33,980	23,539	17,615	87,324	128,478
B. P. L.	1,242,142	620,755	305,309	124,407	1,862,897	2,292,613
Children with Special Needs (C.W.S.N.)	194,680	100,399	44,317	8,028	295,079	347,424

5.2- Mediumwise Enrolment (Class 1 to 12)

Indicator (Number of Mediumwise schools)	Govt. and Local bodies	Pvt. Aided	Pvt. Unaided	Un-recognised	Total
Marathi	5,768,290	9,119,401	881,453	19,887	15,789,031
English	160,306	626,084	3,312,520	58,738	4,157,648
Hindi	207,810	363,918	89,720	1,912	663,360
Urdu	446,030	704,295	147,563	1,741	1,299,629
Bangali	5,892	422	0	0	6,314
Gujrati	10,355	77,402	2,813	0	90,570
Kannada	21,304	19,891	844	0	42,039
Sindhi	114	5,433	736	0	6,283
Tamil	6,954	457	158	0	7,569
Telgu	5,214	778	1,555	0	7,547
Total	6,632,269	10,918,081	4,437,362	82,278	22,069,990
School size (Distribution of schools by Enrolment)	Govt. and Local bodies	Pvt. Aided	Pvt. Unaided	Un-recognised	Total
Less than 10	3,772	43	224	39	4,078
11-20	8,968	96	420	38	9,522
21-30	11,006	223	523	57	11,809
31-60	13,834	631	1,696	161	16,322
61-150	15,672	3,542	4,356	237	23,807
More than 150	14,365	17,160	7,738	167	39,430

6- Gender Gap in Enrolment (in %)

Indicator	Primary	Upper Primary	Secondary	Higher Secondary	Elementry	All
All Social Groups	5.90	7.20	8.90	7.26	6.38	6.88
General	6.99	8.00	8.62	6.66	7.36	7.48
Schedule Castes (SC)	3.70	5.00	8.08	6.76	4.20	5.10
Schedule Tribes (ST)	4.03	7.03	10.35	12.87	5.03	6.23
Other Backward Classes (OBC)	6.14	7.22	9.19	3.75	5.16	4.95
Muslim	1.94	3.06	3.76	-1.19	2.33	2.30
Nomadic Tribes (NT)	5.68	7.25	11.21	13.75	6.27	7.73
Vimukat Jatis (VJ)	5.71	10.17	17.78	22.15	7.25	9.79
Special Backward Classes (SBC)	4.99	5.41	4.92	4.92	5.16	4.95
Bouddhist Minority	3.48	5.69	8.70	6.46	4.29	5.17
Parshi Minority	6.75	4.03	3.94	-6.96	5.64	3.31
Christan Minority	1.38	2.81	2.32	-0.64	1.96	1.69
Sikh Minority	7.10	8.79	6.83	1.68	7.77	6.65
Jain Minority	5.79	6.50	5.59	7.00	6.06	6.11
B. P. L.	3.30	2.69	1.31	1.56	3.10	2.78
Children with Special Needs (C.W.S.N.)	19.72	13.63	12.44	5.28	1.96	16.70
No. of clusters having gender gap > 10 %	791	1,380	2,207	1,435	869	1,072
No. of Block having gender gap > 10 %	19	58	151	161	34	61

7- Teacher (Class 1 to 12)

Indicators	Govt. and Local bodies	Pvt. Aided	Pvt. Unaided	Un-recognised	Total	
Number of Teachers	Male	166,965	193,447	41,424	402,658	
	Female	107,355	102,993	95,724	308,956	
	Total	274,320	296,440	137,148	3,706	711,614
Percentage of female teachers to total teachers	39.13	34.74	69.80	77.82	43.42	
Schools without a female teacher	Number	26,009	3,551	1,606	44	31,210
	%	38.47	16.37	10.74	6.29	29.73

7.1- Mediumwise Teacher (Class 1 to 12)

Medium	Govt. and Local bodies	Pvt. Aided	Pvt. Unaided	Un-recognised	Total
Marathi	247,153	252,161	31,405	917	531,636
English	4,511	13,773	98,174	2,628	119,086
Hindi	6,109	9,360	2,528	79	18,076
Urdu	14,163	17,640	4,785	82	36,670
Bangali	267	16	0	0	283
Gujrati	523	2,523	136	0	3,182
Kannada	1,001	729	49	0	1,779
Sindhi	11	180	26	0	217
Tamil	310	17	10	0	337
Telgu	272	41	35	0	348
Total	274,320	296,440	137,148	3,706	711,614

7.2- Castewise Teacher (Class 1 to 12)

Caste	Govt. and Local bodies	Pvt. Aided	Pvt. Unaided	Un-recognised	Total
All	274,320	296,440	137,148	3,706	711,614
Genral	98,236	134,012	87,197	2,009	321,454
SC	35,834	36,053	11,609	403	83,899
ST	26,548	17,387	3,771	191	47,897
OBC	72,034	74,592	25,999	884	173,509
VJ	10,564	9,619	1,956	57	22,196
NT	7,480	8,625	2,643	32	18,780
SBC	6,823	4,265	1,296	42	12,426
NT-B	5,581	3,969	963	47	10,560
NT-C	6,149	5,110	1,047	24	12,330
NT-D	5,071	2,808	667	17	8,563

Indicators		Govt. and Local bodies	Pvt. Aided	Pvt. Unaided	Un-recognised	Total
Schools with single teacher	Number	1,627	58	264	37	1,986
	%	2.41	0.27	1.77	5.29	1.89
PTR	Local Body-Only	Primary Section	Upper Primary Section	Secondary Section	Elementry Section	All (Class 1-12)
Pupil Teacher Ratio	24	33	32	22	32	31

Indicators		Govt. and Local bodies	Pvt. Aided	Pvt. Unaided	Un-recognised	Total
Primary schools having PTR more than 30	Number	6,114	2,033	1,687	101	9,935
	%	13.63	65.22	37.00	22.60	18.75
Upper Primary having PTR more than 35	Number	1,556	4,838	1,242	6	7,642
	%	6.93	33.66	19.99	3.75	17.70
Trained /Untrained Teacher	Primary Section	Upper Primary Section	Secondary Section	Higher Secondary Section	Elementry Section	All
Teacher All	310,870	187,967	157,927	54,850	498,837	711,614
Trained Teacher Number	306,658	186,724	157,026	54,021	493,382	704,429
%	98.65	99.34	99.43	98.49	98.91	98.99
Untrained Teacher All Number	4,212	1,243	901	829	5,455	7,185
%	1.35	0.66	0.57	1.51	1.09	1.01

8-Efficiency indicators

8.1 Annual Average Drop-out Rate

Social Groups	Primary			UpperPrimary		
	Boys	Girls	Total	Boys	Girls	Total
All Social Groups	0.96	1.10	1.03	1.43	2.29	1.83
General	0.44	0.43	0.44	1.25	1.89	1.55
Schedule Castes (SC)	1.41	1.39	1.40	2.08	2.78	2.42
Schedule Tribes (ST)	4.07	4.47	4.26	4.53	5.98	5.21
Other Backward Classes (OBC)	0.25	0.45	0.35	0.39	1.37	0.84
Vimukat Jatis (VJ)	4.13	5.03	4.56	4.69	7.92	6.17
Nomadic Tribes (NT)	9.08	8.24	8.69	10.82	11.13	10.97
Special Backward Classes (SBC)	0.00	0.00	0.00	0.00	0.00	0.00
Muslim	2.20	1.61	1.91	3.82	5.68	4.73

8.2 Transition Rate

Social Groups	Primary			UpperPrimary		
	Boys	Girls	Total	Boys	Girls	Total
All Social Groups	98.44	97.28	97.90	100.00	97.25	99.07
General	98.51	97.06	97.84	100.00	98.54	100.00
Schedule Castes (SC)	100.00	99.39	99.72	100.00	97.80	100.00
Schedule Tribes (ST)	93.77	92.70	93.26	93.52	89.62	91.74
Other Backward Classes (OBC)	99.37	98.28	98.86	100.00	100.00	99.36
VJ / NT	97.78	96.75	97.30	96.35	91.24	94.05
Special Backward Classes (SBC)	100.00	99.99	100.00	100.00	99.32	100.00
Muslim	96.88	92.79	94.85	98.21	94.36	96.35

8.3 Gender Parity Index (GPI)

Social Groups	Primary Section	Upper Primary Section	Secondary Section	Higher Secondary Section	Elementary Section	All (Class 1-12)
All Social Groups	0.89	0.87	0.84	0.86	0.88	0.87
General	0.87	0.85	0.84	0.88	0.86	0.86
Schedule Castes (SC)	0.93	0.90	0.85	0.85	0.92	0.90
Schedule Tribes (ST)	0.92	0.87	0.81	0.77	0.90	0.88
Other Backward Classes (OBC)	0.88	0.87	0.83	0.87	0.88	0.87
Vimukat Jatis (VJ)	0.89	0.82	0.70	0.64	0.86	0.82
Nomadic Tribes (NT)	0.89	0.86	0.80	0.76	0.88	0.86
Special Backward Classes (SBC)	0.90	0.90	0.91	0.93	0.90	0.91
Muslim	0.96	0.94	0.93	1.02	0.95	0.96

8.4 Retention Rate

Social Groups	Primary			UpperPrimary		
	Boys	Girls	Total	Boys	Girls	Total
All Social Groups	94.62	93.65	94.16	96.41	96.41	95.32
General	94.85	94.12	94.51	95.55	95.55	93.58
Schedule Castes (SC)	91.22	90.97	91.10	94.09	91.56	92.88
Schedule Tribes (ST)	79.30	77.48	78.43	85.55	82.74	84.24
Other Backward Classes (OBC)	100.00	100.00	100.00	100.00	99.41	100.00
Muslim	99.12	100.00	94.16	89.71	84.48	95.32

9. Right To Education (RTE) Information

Subject		Govt. & Local Bodies	Private Aided	Private Un-Aided	Unrecognised	Total
Elementary Schools All(Classess Having 1 to 8)		67,596	20,988	13,983	695	103,262
No of Schools CCE being implemented in school	No of Schools	67,434	20,309	12,584	572	100,899
	%	99.76	96.76	89.99	82.30	97.71
No of Schools having maintained pupil comulative records	No of Schools	67,411	20,258	12,463	549	100,681
	%	99.73	96.52	89.13	78.99	97.50
No. of Schools having shared pupil comulative records with parents	No of Schools	67,375	20,220	12,412	545	100,552
	%	99.67	96.34	88.76	78.42	97.38
No. of Schools having Constituted SMC	No of Schools	67,173	17,490	NA	NA	84,663
	%	99.37	83.33	NA	NA	95.57
No. of Schools having Constituted SMDC	No of Schools	1,410	9,852	NA	NA	11,262
	%	2.09	46.94	NA	NA	12.71
No. of Schools having Constituted SMC & SMDC are same	No of Schools	611	4,946	NA	NA	5,557
	%	0.90	23.57	NA	NA	6.27
Avg. total no. of SMC Members in schools	Male	7	6	NA	NA	6
	Female	7	5	NA	NA	6
Avg. no. of representative of parents / Guardians / PTA in SMC	Male	1	1	NA	NA	1
	Female	5	4	NA	NA	4
Avg. no. of representative of local authorities / local government /urban	Male	1	1	NA	NA	1
	Female	1	1	NA	NA	1
Avg. no. of SMC meetings held in previous year		8	3	NA	NA	6
No.. of Schools having prepared SDP		63,938	11,676	NA	NA	77,886
No. of Schools having maintained separate SMC bank accounts		67,647	12,916	NA	NA	80,955
Avg. no. of instructional days of school in previous year	Primary	223	222	215	213	222
	Upper Primary	221	181	143	132	191
	Secondary	218	223	213	209	220
	Higher Secondary	212	201	130	151	183
Avg. of staying childrens hours in schools per day	Primary	6	6	5	5	6
	Upper Primary	6	4	4	3	5
	Secondary	4	4	4	4	4
	Higher Secondary	5	4	4	5	4
Avg. of teachers working hours in school per day	Primary	6	6	6	6	6
	Upper Primary	6	5	4	4	5
	Secondary	5	5	5	4	5
	Higher Secondary	5	5	5	6	5
No of Schools having complete set of free text book received	Primary	64,965	5,959	1,093	54	72,071
	Upper Primary	20,911	3,678	583	15	25,187
No of Schools having TLE available for each grade	Primary	64,797	6,384	4,170	235	75,586
	Upper Primary	20,966	3,898	2,174	48	27,086
No of Schools having playing material, games and sports equipment available for each grade\	Primary	46,417	5,800	4,187	221	56,625
	Upper Primary	16,465	3,516	2,189	42	22,212
No. of Schools having any children enrolled in school special training	Schools	11,664	6,534	967	81	19,246
No of Children Enrolled for Special Training in Previous Year	Boys	11,338	4,540	1,734	32	17,644
	Girls	6,822	2,535	550	34	9,941
No of Children Provided for Special Training in Previous Year	Boys	21,993	6,534	2,714	195	31,436
	Girls	11,664	6,534	967	81	19,246

9. Right To Education (RTE) Information

Subject		Govt. & Local Bodies	Private Aided	Private Un-Aided	Unrecognised	Total
Elementary Schools All (Classes Having 1 to 8)		67,596	20,988	13,983	695	103,262
No of Children Enrolled for Special Training in Current Year	Boys	26,297	15,266	7,059	430	49,052
	Girls	15,559	12,026	3,549	301	31,435
No of Children Provided for Special Training in Current Year	Boys	28,722	12,055	4,074	165	45,016
	Girls	14,447	4,568	1,563	90	20,668
No. of Childrens completed special training during previous year	School Teachers	4,505	985	277	8	5,775
	Specially engaged	3,160	3,160	170	170	6,660
	Both	166	61	35	1	263
	NGO	37	22	4	1	64
	Other	28	16	16	3	63
	None	1,288	244	76	2	1,610
Special training is conducted in	School premises	3,324	660	201	7	4,192
	Other than School premises	2,117	419	111	2	2,649
	Both	156	45	26	2	229
Type of Training	Residential	4,575	1,020	275	18	5,888
	Non Residential	2,148	400	275	1	2,824
	Both	157	49	27	2	235

10. CWSN with Special Needs (Current Year)

Type of Facility	Elementary			Secondary / Hsecondary		
	Boys	Girls	Total	Boys	Girls	Total
Visual Impairment (Blindness)-TB	5,699	4,520	10,219	1,203	814	2,017
Visual Impairment (Low vision) -LV	36,462	33,712	70,174	11,694	12,943	24,637
Hearing impairment-HI	20,063	14,593	34,656	3,116	2,026	5,142
Speech impairment-SI	19,990	10,233	30,223	1,744	867	2,611
Loco Motor Impairment-OH	25,140	15,181	40,321	5,012	2,913	7,925
Mental Retardation-MR	32,763	20,315	53,078	2,271	1,246	3,517
Learning disability-LD	22,719	16,395	39,114	3,443	2,035	5,478
Cerebral Palsy-CP	1,914	1,104	3,018	223	90	313
Autism-ASD	1,564	1,040	2,604	91	55	146
Multiple disability-MD	7,269	4,403	11,672	344	215	559
Total	173,583	121,496	295,079	29,141	23,204	52,345
Grand Total (Class 1 to 12)	202,724	144,700	347,424			

11. Facilities provided to CWSN (Previous Year)

Type of Facility	Elementary			Secondary / Hsecondary		
	Boys	Girls	Total	Boys	Girls	Total
Brail Books	1,176	919	2,095	255	183	438
Brail Kit	753	653	1,406	121	124	245
Low vision Kit	1,041	1,084	2,125	340	367	707
Hearing aid	2,962	2,092	5,054	413	249	662
Braces	106	64	170	17	8	25
Crutches	147	121	268	36	23	59
Wheel Chair	2,548	1,353	3,901	143	55	198
Tri-Cycle	649	276	925	92	45	137
Caliper	1,238	736	1,974	140	82	222
Total	10,620	7,298	17,918	1,557	1,136	2,693
Grand Total (Class 1 to 12)	12,177	8,434	20,611			

Educational Development Index

Management	All	Local Body	Social	Trible	Aided	UnAided
Indicator / District Ranks	0	0	0	0	0	0
Access	0	0	0	0	0	0
01. Density of Schools per 10 Sq.Km. All	3.41	2.16	0.06	0.04	0.64	0.49
02. Availability of schools per 1000 child population census 2001	6.38	4.47	0.12	0.08	1.19	0.92
03. Ratio of primary to Upper Primary Schools/Sections	1.90	3.04	1.30	0.94	0.43	1.52
Infrastructure	0	0	0	0	0	0
04. % of Schools with SCR>30	8.28	25.09	3.33	0.22	9.66	11.26
05. % of Schools with SCR>35	16.02	5.62	14.71	52.24	45.69	19.71
06. Percentage of Schools with 1:1 Classroom Teacher Ratio	64.26	72.45	54.42	34.36	23.43	47.27
07. % of Schools with Water facility	99.32	99.16	100.00	99.85	99.92	99.91
08. % of Schools with Boys Toilet	96.31	97.19	97.92	96.62	94.84	97.79
09. % of Schools with Girls Toilets	97.70	97.47	96.31	99.04	98.45	98.39
10. % of Schools with Ramp	75.79	81.80	46.26	33.63	51.37	42.59
11. % of Schools with Kitchen Shead (Gov & Aided)	90.11	99.65	79.05	83.89	79.13	76.79
Teacher	0	0	0	0	0	0
12. % of schools with female teachers (in schools with 2 and more teachers)	47.75	34.72	3.64	51.88	68.74	78.02
13. % of Schools with PTR>30	9.46	22.42	3.64	0.22	10.06	11.77
14. % of Schools with PTR>35	7.28	1.41	6.65	31.49	23.58	8.13
15. % of Single Teacher Schools	1.89	1.76	0.68	0.07	0.22	2.04
16. % without Professional Qualification	6.84	6.89	9.77	6.33	6.89	25.10
OutComes	0	0	0	0	0	0
17. Average number of instructional days -Primary	222.00	223.78	225.41	227.00	222.43	213.09
18. Average number of instructional days -Upper Primary	191.00	224.24	222.72	211.00	223.06	213.01
19. Average working hours for teachers-Primary	6.41	6.50	6.20	5.79	6.24	5.97
20. Average working hours for teachers-Upper Primary	6.42	6.40	6.10	6.15	6.11	5.99
21. % of change in enrollment in Gov schools over the previous year	-0.99	1.11	-0.52	-4.65	-1.04	-7.80
22. Gross Enrollment Ratio	98.14	98.14	98.14	98.14	98.14	98.14
23. Retention Rate	94.14	94.14	94.14	94.14	94.14	94.14
24. Participation of SC children ((% of SC Population (2001 census)- % of SC Enrollment)	13.65	2.47	19.46	0.92	14.68	8.82
25. Participation of ST children ((% of ST Population (2001 census)- % of ST Enrollment)	10.66	83.72	8.03	95.81	7.12	3.38
26. Participation of Muslim children ((% of Muslim Population (2001 census)-% of Muslim Enrollment)	12.16	3.93	2.57	0.14	11.90	13.49
27. Ratio of Girls Enrollment to Boys Enrollment	0.88	1.00	0.57	0.83	0.89	0.72
28. DROPOUT RATE	1.37	1.37	1.37	1.37	1.37	1.37
29. Transition Rate for primary to upper primary	99.06	91.42	98.09	100.31	104.37	98.36

Schools ,Enrollment & Teachers (Class 1 to 12)

Management	Schools	Enrollments	Teachers	Classrooms	PTR	SCR
Department of Education	70	12528	453	353	27.7	35.5
Zilla Parishad	62158	5181082	229406	230713	22.6	22.5
MNC	3224	868134	26374	21553	32.9	40.3
Nagar Palika	1334	244992	7988	7705	30.7	31.8
Local body	0	0	0	0	0.0	0.0
Cantonment Board	46	11931	453	368	26.3	32.4
Tribal/Social Welfare Dept.	0	0	0	0	0.0	0.0
Social Welfare	115	15742	586	688	26.9	22.9
Tribal Welfare	550	202600	5816	5172	34.8	39.2
Central Govt.	73	74717	2404	1969	31.1	37.9
Central School	0	0	0	0	0.0	0.0
Govt Military School	6	4769	133	116	35.9	41.1
Navoday Vodyalay	32	13490	634	388	21.3	34.8
Railway School	9	2284	73	68	31.3	33.6
Gov & Local Body	67617	6632269	274320	269093	24.2	24.6
Social Welfare Aided	1325	243243	10153	9350	24.0	26.0
Tribal Welfare Aided	809	228263	6498	5576	35.1	40.9
Pvt. Aided	19322	10367100	277724	197587	37.3	52.5
Partially Aided	221	69820	1612	1563	43.3	44.7
Pvt. Military School	18	9655	453	245	21.3	39.4
Private Aided	21695	10918081	296440	214321	36.8	50.9
Social Welfare Unaided	484	40794	2918	2846	14.0	14.3
Tribal Welfare Unaided	0	0	0	0	0.0	0.0
Unaided	5475	1366696	40827	37065	33.5	36.9
Pvt. Unaided	72	11955	422	387	28.3	30.9
Permanent Unaided	8009	2956524	89181	76310	33.2	38.7
Self Finance	771	52072	3144	3215	16.6	16.2
Vedic/sanskrit/Dharmic School	9	661	47	49	14.1	13.5
Madarsa recognized	55	3542	245	245	14.5	14.5
Madarsa unrecognized	82	5118	364	375	14.1	13.6
Others	0	0	0	0	0.0	0.0
No Response	0	0	0	0	0.0	0.0
Private Unaided	14957	4437362	137148	120492	32.4	36.8
Un-Recognised	699	82278	3706	3762	22.2	21.9
Grand Total	104968	22069990	711614	607668	31.0	36.3