



District Profile

Based on Unified District Information System for Education (UDISE), 2013-14

District : Solapur

1 – Demographic (Source : Census of India,2011)

	Male	Female	Person	Sex Ratio	Child Sex Ratio (0-6 years)
Population	2,233,778	2,081,749	4,315,527		
Literacy rate	86.4	68.6	77.7	932	872

2- Number of Schools by Management and Category (Class 1 to 12)

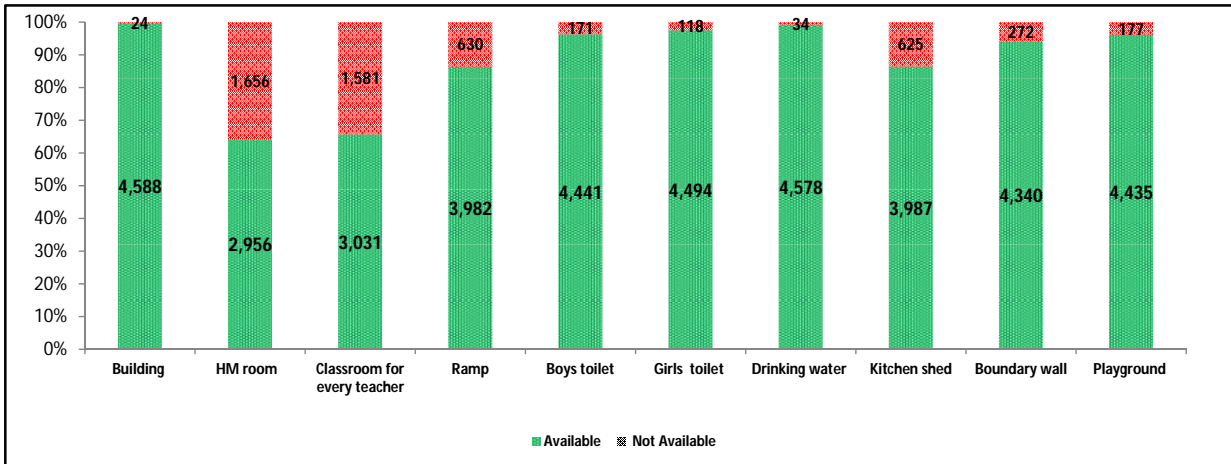
Indicator (Number of schools)	Govt. and Local bodies	Pvt. Aided	Pvt. Unaided	Un-recognised	Total
Primary (1-4/5)	2,152	180	152	11	2,495
Primary with Upper Primary (1-7/8)	863	216	76	1	1,156
Pri,Upper,Secondary with Hsecondary (1 to 12)	1	1	10	0	12
Only Upper Primary (5/6 to 7/8)	1	0	0	0	1
Upper,Secondary with Hsecondary (5/6 to 12)	2	218	19	0	239
Primary,Upperprimary with Secondary(1 to 10)	2	4	24	0	30
Upperprimary with Secondary(5/6 to 10)	9	358	65	0	432
Secondary Only (8/9 to 10)	0	69	94	0	163
Secondary with HSecondary(8/9 to 12)	1	27	13	0	41
Higher Secondary with college attached (11 to 12)	0	23	20	0	43
Total	3,031	1,096	473	12	4,612
Having Primary level classes	3,018	401	262	12	3,693
Having Upper Primary level classes	878	797	194	1	1,870
Having Secondary level classes	15	677	225	0	917
Having HigherSecondary level classes	4	269	62	0	335
Ratio of Primary to Upper Primary schools	State average				1.93
	District				1.97

3 - Number of Mediumwise Schools by Management .(Class 1 to 12)

Indicator (Number of Mediumwise schools)	Govt. and Local bodies	Pvt. Aided	Pvt. Unaided	Un-recognised	Total
Marathi	2,843	1,016	280	2	4,141
English	2	5	173	10	190
Hindi	1	2	0	0	3
Urdu	92	56	16	0	164
Bangali	0	0	0	0	0
Gujrati	0	0	0	0	0
Kannada	88	17	3	0	108
Sindhi	0	0	0	0	0
Tamil	0	0	0	0	0
Telgu	5	0	1	0	6
Total	3,031	1,096	473	12	4,612

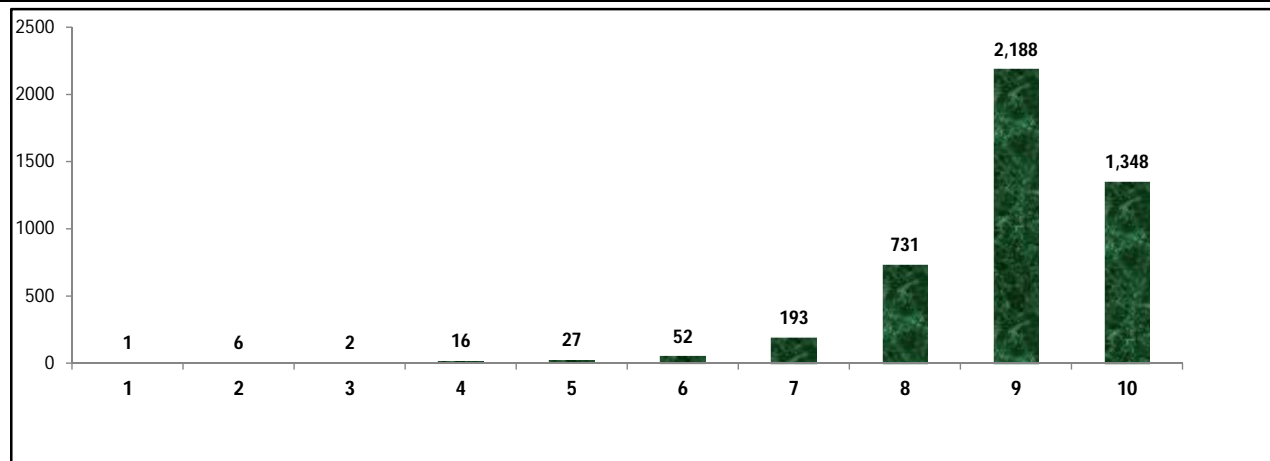
4 – Infrastructure at Elementry Level

Status of Infrastructure Facilities in Schools (Numbers, All schools)



Indicator : Schools with infrastructure facilities available (Sch.All)		Govt. and Local bodies	Pvt. Aided	Pvt. Unaided	Un-recognised	Total
Total Schools		3031	1096	473	12	4612
1. Building	Number	3,008	1,096	472	12	4,588
	%	99.24	100.00	99.79	100.00	99.48
2. Office-cum-store-cum-HM room	Number	1,595	930	420	11	2,956
	%	52.62	84.85	88.79	91.67	64.09
3. One classroom for every teacher	Number	2,586	244	193	8	3,031
	%	85.32	22.26	40.80	66.67	65.72
4. Ramp	Number	2,912	788	274	8	3,982
	%	96.07	71.90	57.93	66.67	86.34
5. Separate toilet for boys	Number	2,920	1,050	459	12	4,441
	%	96.34	95.80	97.04	100.00	96.29
6. Separate toilet for girls	Number	2,940	1,080	462	12	4,494
	%	97.00	98.54	97.67	100.00	97.44
7. Drinking water facility	Number	2,998	1,096	472	12	4,578
	%	98.91	100.00	99.79	100.00	99.26
8. Kitchen shed (Gov & Aided Schools)	Number	3,024	963	NA	NA	3,987
	%	99.77	87.86	NA	NA	96.61
9. Boundary wall	Number	2,885	1,017	427	11	4,340
	%	95.18	92.79	90.27	91.67	94.10
10. Playground	Number	2,941	1,035	447	12	4,435
	%	97.03	94.43	94.50	100.00	96.16
Indicators		Govt. and Local bodies	Pvt. Aided	Pvt. Unaided	Un-recognised	Total
Number of classrooms(1 to 8)		11,171	7,233	2,206	68	20,678
Number of classrooms(9 to 10)		51	2,279	482	0	2,812
Number of classrooms(11 to 12)		20	1,265	181	0	1,466
Student Classroom Ratio (SCR) Primary		23	UpperPri.	36	Elementry	31
Primary schools having SCR more than 30	Number	235	101	36	1	373
	%	10.92	56.11	23.68	9.09	14.95
Upper Primary. schools having SCR more than 35	Number	67	544	81	0	692
	%	7.63	68.26	41.75	0.00	37.01
Schools fulfilling "10" infrastructure norms for building under RTE(El.Sch.)	Number	1,181	104	60	3	1,348
	%	38.96	9.69	13.25	25.00	29.50

Number of schools by number of infrastructure elements compliance



5- Enrolment (Class 1 to 12)

Number of students enrolled in		Govt. and Local bodies	Pvt. Aided	Pvt. Unaided	Un-recognised	Total
Primary Classes (1-5)	Boys	106,570	76,725	29,239	450	212,984
	Girls	103,255	68,065	18,507	225	190,052
	Total	209,825	144,790	47,746	675	403,036
Upper Primary Classes (6-8)	Boys	19,358	96,921	13,360	21	129,660
	Girls	20,251	81,676	9,280	18	111,225
	Total	39,609	178,597	22,640	39	240,885
Secondary Classes (9-10)	Boys	1,124	66,140	9,641	0	76,905
	Girls	767	52,942	7,136	0	60,845
	Total	1,891	119,082	16,777	0	137,750
Higher Secondary Classes (11-12)	Boys	582	45,146	4,348	0	50,076
	Girls	640	34,562	2,982	0	38,184
	Total	1,222	79,708	7,330	0	88,260
Elementary Classes (1-8)	Boys	125,928	173,646	42,599	471	343,644
	Girls	123,506	149,741	27,787	243	301,277
	Total	249,434	323,387	70,386	714	643,921
All Classes (1-12)	Boys	127,634	284,932	56,588	471	469,625
	Girls	124,913	237,245	37,905	243	400,306
	Total	252,547	522,177	94,493	714	869,931

5.1- Castewise Enrolment (Class 1 to 12)

Indicator	Primary	Upper Primary	Secondary	Higher Sec.	Elementry	All
All Social Groups	403,036	240,885	137,750	88,260	643,921	869,931
General	168,586	102,498	61,388	41,298	271,084	373,770
Schedule Castes (SC)	67,249	40,006	21,555	12,410	107,255	141,220
Schedule Tribes (ST)	9,537	4,477	2,059	572	14,014	16,645
Other Backward Classes (OBC)	157,664	93,904	52,748	33,980	251,568	338,296
Muslim	46,611	25,488	13,202	5,749	72,099	91,050
Nomadic Tribes (NT)	53,493	32,144	16,873	9,720	85,637	112,230
Vimukat Jatis (VJ)	21,474	11,545	5,937	3,293	33,019	42,249
Special Backward Classes (SBC)	16,667	10,673	6,730	3,375	27,340	37,445
Bouddhist Minority	449	288	107	99	737	943
Parshi Minority	4	40	34	1	44	79
Christan Minority	480	331	205	57	811	1,073
Sikh Minority	85	75	23	8	160	191
Jain Minority	1,728	949	571	303	2,677	3,551
B. P. L.	47,617	27,845	14,261	5,293	75,462	95,016
Children with Special Needs (C.W.S.N.)	6,191	3,305	975	149	9,496	10,620

5.2- Mediumwise Enrolment (Class 1 to 12)

Indicator (Number of Mediumwise schools)	Govt. and Local bodies	Pvt. Aided	Pvt. Unaided	Un-recognised	Total
Marathi	235,547	493,086	46,583	190	775,406
English	770	4,118	45,823	524	51,235
Hindi	354	312	0	0	666
Urdu	7,231	23,032	1,830	0	32,093
Bangali	0	0	0	0	0
Gujrati	0	0	0	0	0
Kannada	8,570	1,629	215	0	10,414
Sindhi	0	0	0	0	0
Tamil	0	0	0	0	0
Telgu	75	0	42	0	117
Total	252,547	522,177	94,493	714	869,931
School size (Distribution of schools by Enrolment)	Govt. and Local bodies	Pvt. Aided	Pvt. Unaided	Un-recognised	Total
Less than 10	43	4	10	2	59
11-20	295	10	20	2	327
21-30	770	24	23	0	817
31-60	719	43	63	3	828
61-150	644	144	171	5	964
More than 150	560	871	186	0	1,617

6- Gender Gap in Enrolment (in %)

Indicator	Primary	Upper Primary	Secondary	Higher Secondary	Elementry	All
All Social Groups	5.69	7.65	11.66	13.47	6.42	7.97
General	6.88	8.11	10.16	9.72	7.34	8.07
Schedule Castes (SC)	3.19	5.52	13.26	16.21	4.06	6.53
Schedule Tribes (ST)	5.84	12.17	18.02	25.87	7.86	9.74
Other Backward Classes (OBC)	5.47	7.85	12.50	8.03	5.91	7.34
Muslim	1.16	4.56	10.76	13.97	2.36	4.31
Nomadic Tribes (NT)	4.90	9.96	14.83	19.09	6.80	9.07
Vimukat Jatis (VJ)	6.37	11.74	18.11	18.80	8.25	10.45
Special Backward Classes (SBC)	3.87	9.10	12.81	12.81	5.91	7.34
Bouddhist Minority	2.00	15.28	21.50	13.13	7.19	9.44
Parshi Minority	100.00	-10.00	5.88	-100.00	0.00	1.27
Christan Minority	18.75	4.53	1.46	5.26	12.95	10.34
Sikh Minority	5.88	-25.33	13.04	25.00	-8.75	-4.71
Jain Minority	12.73	7.90	11.38	12.21	11.02	11.18
B. P. L.	3.96	4.42	8.65	-0.43	4.13	4.56
Children with Special Needs (C.W.S.N.)	24.21	11.83	29.64	20.81	12.95	20.81
No. of clusters having gender gap > 10 %	33	74	132	83	42	62
No. of Block having gender gap > 10 %	0	1	11	12	1	2

7- Teacher (Class 1 to 12)

Indicators	Govt. and Local bodies	Pvt. Aided	Pvt. Unaided	Un-recognised	Total	
Number of Teachers	Male	7,400	10,935	1,761	20,115	
	Female	3,861	4,380	1,689	9,961	
	Total	11,261	15,315	3,450	50	30,076
Percentage of female teachers to total teachers	34.29	28.60	48.96	62.00	33.12	
Schools without a female teacher	Number	1,346	203	78	1	1,628
	%	44.41	18.52	16.49	8.33	35.30

7.1- Mediumwise Teacher (Class 1 to 12)

Medium	Govt. and Local bodies	Pvt. Aided	Pvt. Unaided	Un-recognised	Total
Marathi	10,430	14,426	1,766	15	26,637
English	23	128	1,589	35	1,775
Hindi	24	13	0	0	37
Urdu	373	634	82	0	1,089
Bangali	0	0	0	0	0
Gujrati	0	0	0	0	0
Kannada	403	114	12	0	529
Sindhi	0	0	0	0	0
Tamil	0	0	0	0	0
Telgu	8	0	1	0	9
Total	11,261	15,315	3,450	50	30,076

7.2- Castewise Teacher (Class 1 to 12)

Caste	Govt. and Local bodies	Pvt. Aided	Pvt. Unaided	Un-recognised	Total
All	11,261	15,315	3,450	50	30,076
Genral	5,037	8,131	1,821	28	15,017
SC	1,489	1,753	366	6	3,614
ST	653	486	140	0	1,279
OBC	2,262	2,660	643	12	5,577
VJ	550	688	117	0	1,355
NT	0	0	0	0	0
SBC	380	481	123	3	987
NT-B	112	84	19	1	216
NT-C	778	1,032	221	0	2,031
NT-D	0	0	0	0	0

Indicators		Govt. and Local bodies	Pvt. Aided	Pvt. Unaided	Un-recognised	Total
Schools with single teacher	Number	36	2	16	0	54
	%	1.19	0.18	3.38	0.00	1.17
PTR	Local Body-Only	Primary Section	Upper Primary Section	Secondary Section	Elementry Section	All (Class 1-12)
Pupil Teacher Ratio	22	30	32	20	31	29

Indicators		Govt. and Local bodies	Pvt. Aided	Pvt. Unaided	Un-recognised	Total
Primary schools having PTR more than 30	Number	247	105	36	1	389
	%	11.48	58.33	23.68	9.09	15.59
Upper Primary having PTR more than 35	Number	25	253	31	0	309
	%	2.85	31.74	15.98	0.00	16.52
Trained /Untrained Teacher	Primary Section	Upper Primary Section	Secondary Section	Higher Secondary Section	Elementry Section	All
Teacher All	13,437	7,455	6,914	2,270	20,892	30,076
Trained Teacher Number	13,394	7,429	6,862	2,252	20,823	29,937
%	99.68	99.65	99.25	99.21	99.67	99.54
Untrained Teacher All Number	43	26	52	18	69	139
%	0.32	0.35	0.75	0.79	0.33	0.46

8-Efficiency indicators

8.1 Annual Average Drop-out Rate

Social Groups	Primary			UpperPrimary		
	Boys	Girls	Total	Boys	Girls	Total
All Social Groups	3.72	3.86	3.78	3.20	4.60	3.85
General	3.25	3.41	3.25	2.80	3.25	3.01
Schedule Castes (SC)	4.06	4.70	4.37	4.05	6.43	5.19
Schedule Tribes (ST)	11.01	10.50	10.77	17.43	18.79	18.03
Other Backward Classes (OBC)	3.60	3.53	3.57	2.44	4.48	3.39
Vimukat Jatis (VJ)	12.33	14.31	13.27	7.31	12.71	9.78
Nomadic Tribes (NT)	10.32	8.52	9.47	9.84	13.26	11.41
Special Backward Classes (SBC)	0.00	0.00	0.00	0.00	0.00	0.00
Muslim	8.66	10.28	9.47	5.21	12.64	8.91

8.2 Transition Rate

Social Groups	Primary			UpperPrimary		
	Boys	Girls	Total	Boys	Girls	Total
All Social Groups	100.00	98.08	99.65	99.56	93.84	96.94
General	100.00	98.43	100.00	100.00	96.01	98.38
Schedule Castes (SC)	100.00	97.90	99.30	98.25	90.06	94.49
Schedule Tribes (ST)	100.00	90.00	96.68	99.27	96.47	98.08
Other Backward Classes (OBC)	99.53	98.20	98.91	99.18	99.18	96.32
VJ / NT	100.00	98.49	99.32	91.96	90.48	91.32
Special Backward Classes (SBC)	100.00	97.97	100.00	100.00	100.00	100.00
Muslim	98.76	99.30	99.02	100.00	86.28	94.10

8.3 Gender Parity Index (GPI)

Social Groups	Primary Section	Upper Primary Section	Secondary Section	Higher Secondary Section	Elementary Section	All (Class 1-12)
All Social Groups	0.89	0.86	0.79	0.76	0.88	0.85
General	0.87	0.85	0.82	0.82	0.86	0.85
Schedule Castes (SC)	0.94	0.90	0.77	0.77	0.92	0.88
Schedule Tribes (ST)	0.89	0.78	0.69	0.59	0.85	0.82
Other Backward Classes (OBC)	0.90	0.85	0.78	0.71	0.88	0.85
Vimukat Jatis (VJ)	0.88	0.79	0.69	0.68	0.85	0.81
Nomadic Tribes (NT)	0.91	0.82	0.74	0.68	0.87	0.83
Special Backward Classes (SBC)	0.93	0.83	0.77	0.85	0.89	0.86
Muslim	0.98	0.91	0.81	0.75	0.95	0.92

8.4 Retention Rate

Social Groups	Primary			UpperPrimary		
	Boys	Girls	Total	Boys	Girls	Total
All Social Groups	87.93	87.08	87.53	93.30	93.30	91.39
General	81.13	80.39	80.78	91.76	91.76	90.12
Schedule Castes (SC)	84.14	83.19	83.68	90.17	84.03	87.25
Schedule Tribes (ST)	63.57	67.06	65.16	65.77	60.07	63.22
Other Backward Classes (OBC)	100.00	99.43	100.00	98.29	92.31	95.46
Muslim	83.40	78.27	87.53	81.97	75.61	91.39

9. Right To Education (RTE) Information

Subject		Govt. & Local Bodies	Private Aided	Private Un-Aided	Unrecognised	Total
Elementary Schools All(Classess Having 1 to 8)		3,031	1,073	453	12	4,569
No of Schools CCE being implemented in school	No of Schools	3,026	1,031	397	12	4,465
	%	99.84	96.09	87.64	100.00	97.75
No of Schools having maintained pupil comulative records	No of Schools	3,026	1,037	395	11	4,469
	%	99.84	96.64	87.20	91.67	97.81
No. of Schools having shared pupil comulative records with parents	No of Schools	3,026	1,035	393	11	4,465
	%	99.84	96.46	86.75	91.67	97.72
No. of Schools having Constituted SMC	No of Schools	3,022	1,020	NA	NA	4,042
	%	99.70	95.06	NA	NA	98.49
No. of Schools having Constituted SMDC	No of Schools	13	507	NA	NA	520
	%	0.43	47.25	NA	NA	12.67
No. of Schools having Constituted SMC & SMDC are same	No of Schools	8	302	NA	NA	310
	%	0.26	28.15	NA	NA	7.55
Avg. total no. of SMC Members in schools	Male	8	8	NA	NA	7
	Female	7	6	NA	NA	6
Avg. no. of representative of parents / Guardians / PTA in SMC	Male	1	1	NA	NA	1
	Female	5	5	NA	NA	5
Avg. no. of representative of local authorities / local government /urban	Male	1	1	NA	NA	1
	Female	1	1	NA	NA	1
Avg. no. of SMC meetings held in previous year		8	6	NA	NA	7
No.. of Schools having prepared SDP		2,994	887	NA	NA	4,054
No. of Schools having maintained separate SMC bank accounts		3,016	872	NA	NA	3,967
Avg. no. of instructional days of school in previous year	Primary	224	222	217	204	223
	Upper Primary	226	208	156	227	208
	Secondary	231	220	209	6	218
	Higher Secondary	242	208	167	1	201
Avg. of staying childrens hours in schools per day	Primary	6	6	6	5	6
	Upper Primary	6	5	4	6	5
	Secondary	4	4	4	6	4
	Higher Secondary	4	4	5	1	4
Avg. of teachers working hours in school per day	Primary	6	6	6	6	6
	Upper Primary	6	6	4	6	6
	Secondary	5	5	5	6	5
	Higher Secondary	5	5	5	1	5
No of Schools having complete set of free text book received	Primary	3,000	352	46	1	3,399
	Upper Primary	855	201	17	1	1,074
No of Schools having TLE available for each grade	Primary	2,999	365	111	6	3,481
	Upper Primary	856	205	50	1	1,112
No of Schools having playing material, games and sports equipment available for each grade\	Primary	2,839	342	111	6	3,298
	Upper Primary	835	191	50	1	1,077
No. of Schools having any children enrolled in school special training	Schools	180	279	86	17	562
No of Children Enrolled for Special Training in Previous Year	Boys	140	269	33	0	442
	Girls	101	192	25	0	318
No of Children Provided for Special Training in Previous Year	Boys	266	279	103	15	663
	Girls	180	279	86	17	562

9. Right To Education (RTE) Information

Subject		Govt. & Local Bodies	Private Aided	Private Un-Aided	Unrecognised	Total
Elementary Schools All (Classes Having 1 to 8)		3,031	1,073	453	12	4,569
No of Children Enrolled for Special Training in Current Year	Boys	421	535	128	40	1,124
	Girls	298	433	119	15	865
No of Children Provided for Special Training in Current Year	Boys	305	456	102	15	878
	Girls	200	354	109	17	680
No. of Childrens completed special training during previous year	School Teachers	63	47	7	0	117
	Specially engaged	118	118	5	5	246
	Both	2	2	1	1	6
	NGO	0	0	0	0	0
	Other	1	0	0	0	1
	None	2	6	0	0	8
Special training is conducted in	School premises	25	31	4	0	60
	Other than School premises	38	40	2	1	81
	Both	3	2	0	0	5
Type of Training	Residential	154	69	12	0	235
	Non Residential	40	21	12	0	73
	Both	1	1	0	0	2

10. CWSN with Special Needs (Current Year)

Type of Facility	Elementary			Secondary / Hsecondary		
	Boys	Girls	Total	Boys	Girls	Total
Visual Impairment (Blindness)-TB	274	263	537	34	28	62
Visual Impairment (Low vision) -LV	867	863	1,730	268	213	481
Hearing impairment-HI	869	612	1,481	106	38	144
Speech impairment-SI	533	286	819	43	16	59
Loco Motor Impairment-OH	1,069	586	1,655	186	74	260
Mental Retardation-MR	1,478	744	2,222	71	22	93
Learning disability-LD	294	260	554	3	5	8
Cerebral Palsy-CP	56	23	79	4	1	5
Autism-ASD	24	34	58	3	0	3
Multiple disability-MD	229	132	361	4	5	9
Total	5,693	3,803	9,496	722	402	1,124
Grand Total (Class 1 to 12)	6,415	4,205	10,620			

11. Facilities provided to CWSN (Previous Year)

Type of Facility	Elementary			Secondary / Hsecondary		
	Boys	Girls	Total	Boys	Girls	Total
Brail Books	53	41	94	12	6	18
Brail Kit	34	27	61	11	9	20
Low vision Kit	103	117	220	35	29	64
Hearing aid	143	112	255	10	9	19
Braces	2	3	5	1	1	2
Crutches	4	1	5	1	1	2
Wheel Chair	115	67	182	3	3	6
Tri-Cycle	49	23	72	4	1	5
Caliper	45	31	76	2	2	4
Total	548	422	970	79	61	140
Grand Total (Class 1 to 12)	627	483	1,110			

Educational Development Index

Management	All	Local Body	Social	Trible	Aided	UnAided
Indicator / District Ranks	18	23	14	28	16	26
Access	24	28	8	30	10	17
01. Density of Schools per 10 Sq.Km. All	3.18	2.67	0.10	0.00	0.67	0.32
02. Availability of schools per 1000 child population census 2001	6.99	6.88	0.22	0.01	1.48	0.70
03. Ratio of primary to Upper Primary Schools/Sections	1.97	3.46	1.24	1.00	0.43	1.40
Infrastructure	9	5	18	30	10	21
04. % of Schools with SCR>30	6.70	4.69	2.78	0.00	9.93	8.06
05. % of Schools with SCR>35	6.70	1.54	19.44	50.00	52.71	17.65
06. Percentage of Schools with 1:1 Classroom Teacher Ratio	65.72	82.28	38.19	0.00	21.39	39.65
07. % of Schools with Water facility	99.26	99.03	100.00	100.00	100.00	99.78
08. % of Schools with Boys Toilet	96.29	98.75	98.61	75.00	95.29	97.17
09. % of Schools with Girls Toilets	97.44	99.53	97.22	100.00	98.46	98.26
10. % of Schools with Ramp	85.82	91.91	75.69	25.00	71.34	57.73
11. % of Schools with Kitchen Shead (Gov & Aided)	100.00	86.69	90.28	75.00	97.44	70.59
Teacher	16	16	18	3	19	22
12. % of schools with female teachers (in schools with 2 and more teachers)	6.70	29.42	3.47	75.00	68.17	61.66
13. % of Schools with PTR>30	8.43	4.76	3.47	0.00	10.24	8.06
14. % of Schools with PTR>35	6.70	0.43	4.17	0.00	25.38	6.54
15. % of Single Teacher Schools	6.70	3.76	0.69	0.00	0.10	3.49
16. % without Professional Qualification	6.70	0.18	6.25	0.00	7.88	7.19
OutComes	23	27	24	25	21	26
17. Average number of instructional days -Primary	222.97	223.97	226.95	0.00	221.43	213.11
18. Average number of instructional days -Upper Primary	207.92	225.57	227.69	224.67	227.00	224.37
19. Average working hours for teachers-Primary	6.17	6.18	6.21	0.00	5.93	5.96
20. Average working hours for teachers-Upper Primary	5.67	6.24	6.18	6.43	6.10	6.13
21. % of change in enrollment in Gov schools over the previous year	1.95	4.47	6.50	42.62	3.08	-8.61
22. Gross Enrollment Ratio	97.64	97.64	97.64	97.64	97.64	97.64
23. Retention Rate	87.53	87.53	87.53	87.53	87.53	87.53
24. Participation of SC children ((% of SC Population (2001 census)- % of SC Enrollment)	16.23	13.35	16.69	5.07	16.05	11.88
25. Participation of ST children ((% of ST Population (2001 census)- % of ST Enrollment)	1.91	1.67	1.91	82.71	1.49	1.49
26. Participation of Muslim children ((% of Muslim Population (2001 census)-% of Muslim Enrollment)	10.47	4.57	3.92	0.00	11.73	10.31
27. Ratio of Girls Enrollment to Boys Enrollment	0.88	0.98	0.57	0.47	0.89	0.66
28. DROPOUT RATE	3.81	3.81	3.81	3.81	3.81	3.81
29. Transition Rate for primary to upper primary	96.94	92.29	89.64	65.71	99.66	99.52

Schools ,Enrollment & Teachers (Class 1 to 12)

Management	Schools	Enrollments	Teachers	Classrooms	PTR	SCR
Department of Education	1	350	26	8	13.5	43.8
Zilla Parishad	2872	234156	10506	10483	22.3	22.3
MNC	71	4854	249	286	19.5	17.0
Nagar Palika	79	10997	382	388	28.8	28.3
Local body	0	0	0	0	0.0	0.0
Cantonment Board	0	0	0	0	0.0	0.0
Tribal/Social Welfare Dept.	0	0	0	0	0.0	0.0
Social Welfare	1	39	5	5	7.8	7.8
Tribal Welfare	2	559	25	18	22.4	31.1
Central Govt.	2	900	29	32	31.0	28.1
Central School	0	0	0	0	0.0	0.0
Govt Military School	0	0	0	0	0.0	0.0
Navoday Vodyalay	1	354	24	12	14.8	29.5
Railway School	2	338	15	10	22.5	33.8
Gov & Local Body	3031	252547	11261	11242	22.4	22.5
Social Welfare Aided	117	28266	1190	898	23.8	31.5
Tribal Welfare Aided	2	349	13	10	26.8	34.9
Pvt. Aided	974	492682	14082	9845	35.0	50.0
Partially Aided	3	880	30	24	29.3	36.7
Pvt. Military School	0	0	0	0	0.0	0.0
Private Aided	1096	522177	15315	10777	34.1	48.5
Social Welfare Unaided	26	2031	136	145	14.9	14.0
Tribal Welfare Unaided	0	0	0	0	0.0	0.0
Unaided	206	36131	1375	1036	26.3	34.9
Pvt. Unaided	0	0	0	0	0.0	0.0
Permanent Unaided	173	51788	1664	1439	31.1	36.0
Self Finance	68	4543	275	249	16.5	18.2
Vedic/sanskrit/Dharmic School	0	0	0	0	0.0	0.0
Madarsa recognized	0	0	0	0	0.0	0.0
Madarsa unrecognized	0	0	0	0	0.0	0.0
Others	0	0	0	0	0.0	0.0
No Response	0	0	0	0	0.0	0.0
Private Unaided	473	94493	3450	2869	27.4	32.9
Un-Recognised	12	714	50	68	14.3	10.5
Grand Total	4612	869931	30076	24956	28.9	34.9