



District Profile

Based on Unified District Information System for Education (UDISE), 2014-15

District : Thane

1 – Demographic (Source : Census of India,2011)

	Male	Female	Person	Sex Ratio	Child Sex Ratio (0-6 years)
Population	5,879,387	5,174,744	11,054,131		
Literacy rate	90.9	80.8	86.2	880	918

2- Number of Schools by Management and Category (Class 1 to 12)

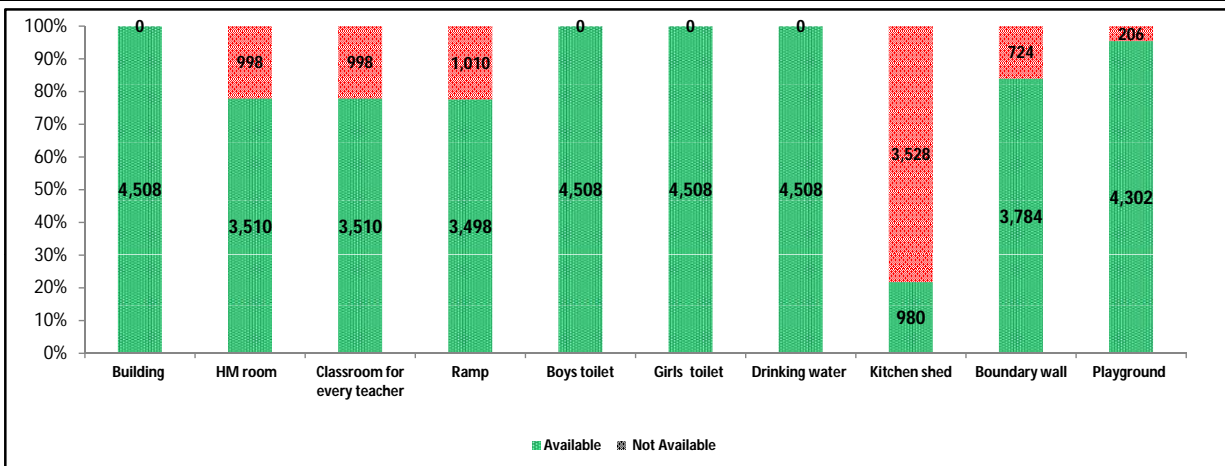
Indicator (Number of schools)	Govt. and Local bodies	Pvt. Aided	Pvt. Unaided	Un-recognised	Total
Primary (1-4/5)	1,102	144	160	16	1,422
Primary with Upper Primary (1-7/8)	743	337	644	28	1,752
Pri,Upper,Secondary with Hsecondary (1 to 12)	10	0	29	0	39
Only Upper Primary (5/6 to 7/8)	0	0	1	0	1
Upper,Secondary with Hsecondary (5/6 to 12)	0	100	23	1	124
Primary,Upperprimary with Secondary(1 to 10)	10	4	46	2	62
Upperprimary with Secondary(5/6 to 10)	3	135	52	0	190
Secondary Only (8/9 to 10)	43	178	501	8	730
Secondary with HSecondary(8/9 to 12)	0	45	73	0	118
Higher Secondary with college attached (11 to 12)	1	9	60	0	70
Total	1,912	952	1,589	55	4,508
Having Primary level classes	1,865	485	879	46	3,275
Having Upper Primary level classes	766	576	795	31	2,168
Having Secondary level classes	66	462	724	11	1,263
Having HigherSecondary level classes	11	154	185	1	351
Ratio of Primary to Upper Primary schools	State average				1.92
	District				1.51

3 - Number of Mediumwise Schools by Management .(Class 1 to 12)

Indicator (Number of Mediumwise schools)	Govt. and Local bodies	Pvt. Aided	Pvt. Unaided	Un-recognised	Total
Marathi	1,703	629	187	5	2,524
English	7	31	1,226	43	1,307
Hindi	47	167	119	4	337
Urdu	118	74	44	3	239
Bangali	0	0	0	0	0
Gujrati	13	26	7	0	46
Kannada	3	6	1	0	10
Sindhi	4	14	3	0	21
Tamil	3	1	0	0	4
Telgu	14	4	2	0	20
Sanskrit	0	0	0	0	0

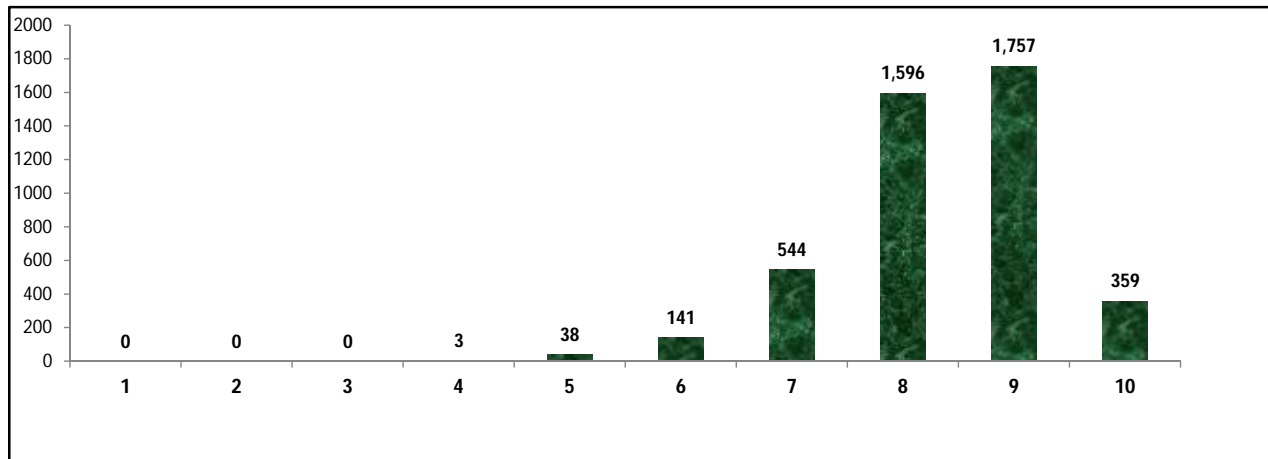
4 – Infrastructure at Elementry Level

Status of Infrastructure Facilities in Schools (Numbers, All schools)



Indicator : Schools with infrastructure facilities available (Sch.All)		Govt. and Local bodies	Pvt. Aided	Pvt. Unaided	Un-recognised	Total
Total Schools		1912	952	1589	55	4508
1. Building	Number	1,912	952	1,589	55	4,508
	%	100.00	100.00	100.00	100.00	100.00
2. Office-cum-store-cum-HM room	Number	989	917	1,551	53	3,510
	%	51.73	96.32	97.61	96.36	77.86
3. One classroom for every teacher	Number	1,547	686	1,239	38	3,510
	%	80.91	72.06	77.97	69.09	77.86
4. Ramp	Number	1,818	632	1,018	30	3,498
	%	95.08	66.39	64.07	54.55	77.60
5. Separate toilet for boys	Number	1,912	952	1,589	55	4,508
	%	100.00	100.00	100.00	100.00	100.00
6. Separate toilet for girls	Number	1,912	952	1,589	55	4,508
	%	100.00	100.00	100.00	100.00	100.00
7. Drinking water facility	Number	1,912	952	1,589	55	4,508
	%	100.00	100.00	100.00	100.00	100.00
8. Kitchen shed (Gov & Aided Schools)	Number	865	115	NA	NA	980
	%	45.24	12.08	NA	NA	34.22
9. Boundary wall	Number	1,472	816	1,448	48	3,784
	%	76.99	85.71	91.13	87.27	83.94
10. Playground	Number	1,839	926	1,490	47	4,302
	%	96.18	97.27	93.77	85.45	95.43
Indicators		Govt. and Local bodies	Pvt. Aided	Pvt. Unaided	Un-recognised	Total
Number of classrooms(1 to 8)		7,832	7,322	13,795	429	29,378
Number of classrooms(9 to 10)		216	2,039	2,530	18	4,803
Number of classrooms(11 to 12)		35	960	1,171	2	2,168
Student Classroom Ratio (SCR) Primary		33	UpperPri.	41	Elementry	43
Primary schools having SCR more than 30	Number	90	96	101	3	290
	%	8.17	66.67	63.13	18.75	20.39
Upper Primary. schools having SCR more than 35	Number	252	208	351	8	819
	%	32.90	36.11	44.15	25.81	37.78
Schools fulfilling "10" infrastructure norms for building under RTE (Ele.Sch.)	Number	293	63	3	0	359
	%	15.33	6.68	0.20	0.00	8.09

Number of schools by number of infrastructure elements compliance



5- Enrolment (Class 1 to 12)

Number of students enrolled in		Govt. and Local bodies	Pvt. Aided	Pvt. Unaided	Un-recognised	Total
Primary Classes (1-5)	Boys	77,438	89,903	216,137	4,925	388,403
	Girls	82,319	94,561	166,263	4,070	347,213
	Total	159,757	184,464	382,400	8,995	735,616
Upper Primary Classes (6-8)	Boys	32,449	85,020	100,924	1,116	219,509
	Girls	34,435	82,739	74,485	858	192,517
	Total	66,884	167,759	175,409	1,974	412,026
Secondary Classes (9-10)	Boys	5,455	64,145	59,213	242	129,055
	Girls	5,647	62,000	45,764	219	113,630
	Total	11,102	126,145	104,977	461	242,685
Higher Secondary Classes (11-12)	Boys	914	33,476	36,115	39	70,544
	Girls	545	36,795	29,553	84	66,977
	Total	1,459	70,271	65,668	123	137,521
Elementary Classes (1-8)	Boys	109,887	174,923	317,061	6,041	607,912
	Girls	116,754	177,300	240,748	4,928	539,730
	Total	226,641	352,223	557,809	10,969	1,147,642
All Classes (1-12)	Boys	116,256	272,544	412,389	6,322	807,511
	Girls	122,946	276,095	316,065	5,231	720,337
	Total	239,202	548,639	728,454	11,553	1,527,848

5.1- Castewise Enrolment (Class 1 to 12)

Indicator	Primary	Upper Primary	Secondary	Higher Sec.	Elementry	All
All Social Groups	735,616	412,026	242,685	137,521	1,147,642	1,527,848
General	435,349	234,849	139,511	81,833	670,198	891,542
Schedule Castes (SC)	74,054	44,971	26,788	14,418	119,025	160,231
Schedule Tribes (ST)	49,620	28,068	12,917	6,018	77,688	96,623
Other Backward Classes (OBC)	176,593	104,138	63,469	35,252	280,731	379,452
Muslim	128,453	66,912	32,605	14,347	195,365	242,317
Nomadic Tribes (NT)	14,516	7,742	4,137	2,031	22,258	28,426
Vimukat Jatis (VJ)	4,631	2,945	1,926	675	7,576	10,177
Special Backward Classes (SBC)	5,889	3,725	2,505	1,534	9,614	13,653
Bouddhist Minority	20,788	12,323	7,210	3,286	33,111	43,607
Parshi Minority	265	175	152	29	440	621
Christan Minority	8,424	4,730	2,890	2,159	13,154	18,203
Sikh Minority	1,892	1,142	875	415	3,034	4,324
Jain Minority	5,500	3,856	2,034	392	9,356	11,782
B. P. L.	19,673	8,208	3,155	1,356	27,881	32,392
Children with Special Needs (C.W.S.N.)	8,474	5,035	2,190	248	13,509	15,947

5.2- Mediumwise Enrolment (Class 1 to 12)

Indicator (Number of Mediumwise schools)	Govt. and Local bodies	Pvt. Aided	Pvt. Unaided	Un-recognised	Total
Marathi	169,313	341,300	37,389	1,234	549,236
English	4,712	47,049	656,317	9,253	717,331
Hindi	20,005	86,256	22,810	334	129,405
Urdu	41,579	60,135	10,596	732	113,042
Bangali	0	0	0	0	0
Gujrati	825	7,690	554	0	9,069
Kannada	377	951	49	0	1,377
Sindhi	63	4,657	391	0	5,111
Tamil	422	6	0	0	428
Telgu	1,906	595	348	0	2,849
Sanskrit	0	0	0	0	0
School size (Distribution of schools by Enrolment)	Govt. and Local bodies	Pvt. Aided	Pvt. Unaided	Un-recognised	Total
Less than 10	80	4	8	1	93
11-20	264	8	26	5	303
21-30	287	12	35	3	337
31-60	393	20	106	3	522
61-150	347	106	366	21	840
More than 150	541	802	1,048	22	2,413

6- Gender Gap in Enrolment (in %)

Indicator	Primary	Upper Primary	Secondary	Higher Secondary	Elementry	All
All Social Groups	5.60	6.55	6.36	2.59	5.94	5.71
General	7.45	8.85	8.40	3.59	7.94	7.61
Schedule Castes (SC)	3.24	5.05	4.32	2.64	3.92	3.87
Schedule Tribes (ST)	3.22	5.85	9.61	11.83	4.17	5.37
Other Backward Classes (OBC)	2.69	2.21	2.05	-0.78	4.83	4.11
Muslim	3.22	0.62	-0.76	-2.10	2.33	1.65
Nomadic Tribes (NT)	0.21	12.12	8.24	3.00	4.35	4.82
Vimukat Jatis (VJ)	3.26	7.98	7.89	12.59	5.10	6.12
Special Backward Classes (SBC)	3.72	6.58	4.35	4.35	4.83	4.11
Bouddhist Minority	2.04	5.75	-0.08	1.64	3.42	2.71
Parshi Minority	7.92	-1.71	13.16	-24.14	4.09	4.99
Christan Minority	-0.52	3.26	-0.76	-4.31	0.84	-0.03
Sikh Minority	8.46	8.76	6.06	4.10	8.57	7.63
Jain Minority	4.18	-17.58	7.96	5.10	-4.79	-2.26
B. P. L.	1.48	2.80	-2.57	5.16	1.87	1.57
Children with Special Needs (C.W.S.N.)	19.01	11.14	12.17	14.89	0.84	15.73
No. of clusters having gender gap > 10 %	25	57	57	46	31	35
No. of Block having gender gap > 10 %	0	1	1	0	0	0

7- Teacher (Class 1 to 12)

Indicators	Govt. and Local bodies	Pvt. Aided	Pvt. Unaided	Un-recognised	Total
Number of Teachers	Male	3,278	5,755	2,901	12,015
	Female	4,638	7,411	15,901	28,319
	Total	7,916	13,166	18,802	40,334
Percentage of female teachers to total teachers	58.59	56.29	84.57	82.00	70.21
Schools without a female teacher	Number	468	38	21	527
	%	24.48	3.99	1.32	0.00

7.1- Mediumwise Teacher (Class 1 to 12)

Medium	Govt. and Local bodies	Pvt. Aided	Pvt. Unaided	Un-recognised	Total
Marathi	6,220	8,564	1,270	41	16,095
English	153	906	16,410	359	17,828
Hindi	378	1,971	733	26	3,108
Urdu	1,000	1,225	317	24	2,566
Bangali	0	0	0	0	0
Gujrati	42	271	32	0	345
Kannada	15	37	4	0	56
Sindhi	7	170	22	0	199
Tamil	15	2	0	0	17
Telgu	86	20	14	0	120
Sanskrit	0	0	0	0	0

7.2- Castewise Teacher (Class 1 to 12)

Caste	Govt. and Local bodies	Pvt. Aided	Pvt. Unaided	Un-recognised	Total
All	7,916	13,166	18,802	450	40,334
Genral	2,788	6,192	15,172	321	24,473
SC	904	1,463	921	24	3,312
ST	785	1,112	259	16	2,172
OBC	2,606	3,434	1,881	79	8,000
VJ	368	570	343	3	1,284
OTHER	0	0	0	0	0
SBC	0	0	0	0	0
NT-B	212	254	80	4	550
NT-C	253	141	145	3	542
NT-D	0	0	1	0	1

Indicators		Govt. and Local bodies	Pvt. Aided	Pvt. Unaided	Un-recognised	Total
Schools with single teacher	Number	232	3	4	0	239
	%	12.13	0.32	0.25	0.00	5.30
PTR	Local Body-Only	Primary Section	Upper Primary Section	Secondary Section	Elementry Section	All (Class 1-12)
Pupil Teacher Ratio	30	46	36	25	42	38

Indicators		Govt. and Local bodies	Pvt. Aided	Pvt. Unaided	Un-recognised	Total
Primary schools having PTR more than 30	Number	170	93	100	1	364
	%	15.43	64.58	62.50	6.25	25.60
Upper Primary having PTR more than 35	Number	246	187	358	6	797
	%	32.11	32.47	45.03	19.35	36.76
Trained /Untrained Teacher	Primary Section	Upper Primary Section	Secondary Section	Higher Secondary Section	Elementry Section	All
Teacher All	15,886	11,470	9,839	3,139	27,356	40,334
Trained Teacher Number	15,853	11,454	9,801	3,099	27,307	40,207
%	99.79	99.86	99.61	98.73	99.82	99.69
Untrained Teacher All Number	33	16	38	40	49	127
%	0.21	0.14	0.39	1.27	0.18	0.31

8-Efficiency indicators

8.1 Annual Average Drop-out Rate

Social Groups	Primary			UpperPrimary		
	Boys	Girls	Total	Boys	Girls	Total
All Social Groups	-0.60	-0.17	-0.39	1.07	1.51	1.28
General	-2.58	-1.97	-2.30	-1.54	-0.80	-1.20
Schedule Castes (SC)	1.31	1.69	1.50	2.38	3.64	2.98
Schedule Tribes (ST)	2.23	2.87	2.55	4.42	5.39	4.88
Other Backward Classes (OBC)	1.20	0.53	0.88	3.63	2.25	2.96
Vimukat Jatis (VJ)	16.07	15.74	15.91	10.29	-1.40	5.30
Nomadic Tribes (NT)	5.09	-1.52	1.92	1.37	9.54	5.13
Special Backward Classes (SBC)	7.50	5.92	6.74	4.59	9.32	6.87
Muslim	-3.08	-1.82	-2.47	4.27	3.60	3.94

8.2 Transition Rate

Social Groups	Primary			UpperPrimary		
	Boys	Girls	Total	Boys	Girls	Total
All Social Groups	100.00	99.79	99.97	100.00	100.00	100.00
General	100.00	100.00	100.00	100.00	100.00	100.00
Schedule Castes (SC)	99.66	98.83	99.26	100.00	100.00	100.00
Schedule Tribes (ST)	98.69	98.54	98.62	100.00	93.85	97.18
Other Backward Classes (OBC)	98.79	99.37	99.07	100.00	100.00	100.00
VJ / NT	91.61	92.89	92.19	76.91	65.80	96.41
Special Backward Classes (SBC)	43.16	41.74	100.00	45.05	42.48	100.00
Muslim	98.44	95.49	96.96	98.67	100.00	99.73

8.3 Gender Parity Index (GPI)

Social Groups	Primary Section	Upper Primary	Secondary Section	Higher Secondary	Elementary Section	All (Class 1-12)
All Social Groups	0.89	0.88	0.88	0.95	0.89	0.89
General	0.86	0.84	0.84	0.93	0.85	0.86
Schedule Castes (SC)	0.94	0.90	0.92	0.92	0.92	0.93
Schedule Tribes (ST)	0.94	0.89	0.82	0.79	0.92	0.90
Other Backward Classes (OBC)	0.95	0.96	0.96	1.03	0.95	0.96
Vimukat Jatis (VJ)	0.94	0.85	0.85	0.78	0.90	0.88
Nomadic Tribes (NT)	1.00	0.78	0.85	0.94	0.92	0.91
Special Backward Classes (SBC)	0.93	0.88	0.92	1.02	0.91	0.92
Muslim	0.94	0.99	1.02	1.04	0.95	0.97

8.4 Retention Rate

Social Groups	Primary			UpperPrimary		
	Boys	Girls	Total	Boys	Girls	Total
All Social Groups	84.64	86.01	85.29	95.08	95.08	93.55
General	93.95	82.79	88.77	100.00	100.00	88.91
Schedule Castes (SC)	71.58	82.67	76.79	79.01	80.73	79.83
Schedule Tribes (ST)	79.95	82.42	81.13	92.94	91.08	92.06
Other Backward Classes (OBC)	100.00	100.00	100.00	100.00	99.14	99.14
Muslim	99.68	94.50	85.29	100.00	89.24	93.55

9. Right To Education (RTE) Information

Subject	Govt. & Local Bodies	Private Aided	Private Un-Aided	Unrecognised	Total	
Elementry Schools All(Classess Having 1 to 8)	1,911	943	1,529	55	4,438	
No of Schools CCE being implemented in school	No of Schools	1,904	928	1,385	46	4,263
	%	99.63	98.41	90.58	83.64	96.06
No of Schools having maintained pupil comulative records	No of Schools	1,901	924	1,387	45	4,257
	%	99.48	97.99	90.71	81.82	95.92
No. of Schools having shared pupil comulative records with parents	No of Schools	1,901	926	1,380	45	4,252
	%	99.48	98.20	90.26	81.82	95.81
No. of Schools having Constituted SMC	No of Schools	1,893	724	NA	NA	2,617
	%	99.06	76.78	NA	NA	91.70
No. of Schools having Constituted SMDC	No of Schools	6	4	NA	NA	10
	%	0.33	0.44	NA	NA	0.37
No. of Schools having Constituted SMC & SMDC are same	No of Schools	4	2	NA	NA	6
	%	0.22	0.23	NA	NA	0.22
Avg. total no. of SMC Members in schools	Male	6	4	NA	NA	4
	Female	7	5	NA	NA	4
Avg. no. of representative of parents / Guardians / PTA in SMC	Male	4	2	NA	NA	2
	Female	6	4	NA	NA	3
Avg. no. of representative of local authorities / local government /urban	Male	1	1	NA	NA	1
	Female	1	1	NA	NA	0
Avg. no. of SMC meetings held in previous year		6	3	NA	NA	3
No.. of Schools having prepared SDP		1,788	535	NA	NA	2,469
No. of Schools having maintained separate SMC bank accounts		1,865	529	NA	NA	2,471
Avg. no. of instructional days of school in previous year	Primary	221	220	220	219	220
	Upper Primary	221	222	222	222	222
	Secondary	221	223	220	217	221
	Higher Secondary	223	220	209	225	214
Avg. of staying childrens hours in schools per day	Primary	6	6	6	5	6
	Upper Primary	6	6	6	5	6
	Secondary	6	6	5	5	6
	Higher Secondary	6	5	5	6	5
Avg. of teachers working hours in school per day	Primary	6	7	7	6	6
	Upper Primary	7	7	7	7	7
	Secondary	6	6	6	6	6
	Higher Secondary	6	6	6	6	6
No of Schools having complete set of free text book received	Primary	1,851	432	112	4	2,399
	Upper Primary	781	529	103	4	1,417
No of Schools having TLE available for each grade	Primary	1,837	457	335	8	2,637
	Upper Primary	759	538	304	5	1,606
No of Schools having playing material, games and sports equipment available for each grade\	Primary	1,613	446	358	9	2,426
	Upper Primary	677	521	326	5	1,529
No. of Schools having any children enrolled in school special training	Schools	1,339	1,370	78	0	2,787
No of Children Enrolled for Special Training in Previous Year	Boys	2,980	1,655	505	12	5,152
	Girls	2,444	1,254	343	5	4,046
No of Children Provided for Special Training in Previous Year	Boys	2,202	1,370	155	0	3,727
	Girls	1,339	1,370	78	0	2,787

9. Right To Education (RTE) Information

Subject		Govt. & Local Bodies	Private Aided	Private Un-Aided	Unrecognised	Total
Elementary Schools All (Classes Having 1 to 8)		1,911	943	1,529	55	4,438
No of Children Enrolled for Special Training in Current Year	Boys	2,980	1,655	505	12	5,152
	Girls	2,444	1,254	343	5	4,046
No of Children Provided for Special Training in Current Year	Boys	2,398	2,699	536	7	5,640
	Girls	1,514	395	255	6	2,170
No. of Childrens completed special training during previous year	School Teachers	165	31	8	1	205
	Specially engaged	45	45	0	0	90
	Both	4	0	0	0	4
	NGO	1	0	0	0	1
	Other	2	2	2	0	6
Special training is conducted in	None	3	1	0	0	4
	School premises	260	52	16	0	328
	Other than School premises	11	3	3	0	17
	Both	1	2	0	0	3
	Residential	275	56	16	0	347
Type of Training	Non Residential	88	23	16	1	128
	Both	4	1	2	0	7

10. CWSN with Special Needs (Current Year)

Type of Facility	Elementary			Secondary / Hsecondary		
	Boys	Girls	Total	Boys	Girls	Total
Visual Impairment (Blindness)-TB	171	125	296	37	36	73
Visual Impairment (Low vision) -LV	1,984	1,890	3,874	609	722	1,331
Hearing impairment-HI	976	727	1,703	98	95	193
Speech impairment-SI	589	290	879	42	23	65
Loco Motor Impairment-OH	813	510	1,323	158	68	226
Mental Retardation-MR	1,519	948	2,467	56	51	107
Learning disability-LD	1,284	756	2,040	228	140	368
Cerebral Palsy-CP	84	58	142	25	9	34
Autism-ASD	211	81	292	14	3	17
Multiple disability-MD	318	175	493	16	8	24
Total	7,949	5,560	13,509	1,283	1,155	2,438
Grand Total (Class 1 to 12)	9,232	6,715	15,947			

11. Facilities provided to CWSN (Previous Year)

Type of Facility	Elementary			Secondary / Hsecondary		
	Boys	Girls	Total	Boys	Girls	Total
Brail Books	11	4	15	114	0	114
Brail Kit	16	5	21	6	0	6
Low vision Kit	28	44	72	12	8	20
Hearing aid	171	142	313	25	34	59
Braces	1	0	1	0	1	1
Crutches	1	0	1	2	1	3
Wheel Chair	50	25	75	4	0	4
Tri-Cycle	11	3	14	3	0	3
Caliper	21	19	40	3	0	3
Total	310	242	552	169	44	213
Grand Total (Class 1 to 12)	479	286	765			

Educational Development Index

Management	All	Local	Social	Trible	Aided	UnAided
Indicator / District Ranks						
Access						
01. Density of Schools per 10 Sq.Km. All	3.76	0.77	0.02	0.06	0.57	0.91
02. Availability of schools per 1000 child population census 2001	2.27	0.47	0.01	0.03	0.35	0.55
03. Ratio of primary to Upper Primary Schools/Sections	1.51	2.49	1.26	0.97	0.83	1.12
Infrastructure						
04. % of Schools with SCR>30	20.39	8.17	0.00	0.00	68.57	59.09
05. % of Schools with SCR>35	37.78	34.10	5.26	25.00	36.20	43.41
06. Percentage of Schools with 1:1 Classroom Teacher Ratio	77.86	80.67	70.37	91.11	71.95	77.68
07. % of Schools with Water facility	100.00	100.00	100.00	100.00	100.00	100.00
08. % of Schools with Boys Toilet	100.00	100.00	100.00	100.00	100.00	100.00
09. % of Schools with Girls Toilets	100.00	100.00	100.00	100.00	100.00	100.00
10. % of Schools with Ramp	77.60	95.86	85.19	48.89	66.12	63.69
11. % of Schools with Kitchen Shead (Gov & Aided)	28.31	58.10	11.11	28.89	17.71	0.30
Teacher						
12. % of schools with female teachers (in schools with 2 and more teachers)	74.11	48.70	0.00	66.67	89.66	94.53
13. % of Schools with PTR>30	25.60	15.35	0.00	0.00	66.43	57.95
14. % of Schools with PTR>35	36.76	33.02	5.26	30.56	32.36	44.01
15. % of Single Teacher Schools	5.30	12.27	0.00	0.00	0.33	0.30
16. % without Professional Qualification	0.00	0.00	0.00	0.00	0.00	0.00
OutComes						
17. Average number of instructional days -Primary	220.82	220.82	220.20	0.00	221.03	218.18
18. Average number of instructional days -Upper Primary	221.39	221.39	218.83	222.69	221.08	221.79
19. Average working hours for teachers-Primary	6.47	6.48	6.72	0.00	6.49	6.44
20. Average working hours for teachers-Upper Primary	6.51	6.52	6.49	6.44	6.54	6.49
21. % of change in enrollment in Gov schools over the previous year	70.40	50.89	81.69	21.95	78.22	82.49
22. Gross Enrollment Ratio	110.00	110.00	110.00	110.00	110.00	110.00
23. Retention Rate	90.40	90.40	90.40	90.40	90.40	90.40
24. Participation of SC children ((% of SC Population (2001 census)- % of SC Enrollment)	10.37	14.33	15.21	0.30	15.90	5.62
25. Participation of ST children ((% of ST Population (2001 census)- % of ST Enrollment)	6.77	18.46	4.37	97.69	5.32	1.33
26. Participation of Muslim children ((% of Muslim Population (2001 census)-% of Muslim Enrollment)	17.02	24.26	3.60	0.08	16.81	14.67
27. Ratio of Girls Enrollment to Boys Enrollment	0.89	1.08	0.65	0.76	1.02	0.77
28. DROPOUT RATE	0.00	0.00	0.00	0.00	0.00	0.00
29. Transition Rate for primary to upper primary	99.97	99.97	99.97	99.97	99.97	99.97

Schools ,Enrollment & Teachers (Class 1 to 12)						
Management	Schools	Enrollments	Teachers	Classrooms	PTR	SCR
Department of Education	2	206	4	7	51.5	29.4
Zilla Parishad	1376	86552	3777	4413	22.9	19.6
MNC	470	134618	3548	3174	37.9	42.4
Nagar Palika	37	4611	186	183	24.8	25.2
Local body	0	0	0	0	0.0	0.0
Cantonment Board	0	0	0	0	0.0	0.0
Tribal/Social Welfare Dept.	0	0	0	0	0.0	0.0
Social Welfare	0	0	0	0	0.0	0.0
Tribal Welfare	23	8842	247	215	35.8	41.1
Central Govt.	0	0	125	66	0.0	0.0
Central School	3	3202	0	66	0.0	48.5
Govt Military School	0	0	0	0	0.0	0.0
Navoday Vodyalay	0	0	0	0	0.0	0.0
Railway School	1	1171	29	25	40.4	46.8
Gov & Local Body	1912	239202	7916	8149	30.2	29.4
Social Welfare Aided	21	1915	158	168	12.1	11.4
Tribal Welfare Aided	22	6538	172	147	38.0	44.5
Pvt. Aided	846	515938	12293	9523	42.0	54.2
Partially Aided	62	23715	519	474	45.7	50.0
Pvt. Military School	1	533	24	9	22.2	59.2
Private Aided	952	548639	13166	10321	41.7	53.2
Social Welfare Unaided	6	336	32	46	10.5	7.3
Tribal Welfare Unaided	0	0	0	0	0.0	0.0
Unaided	639	216475	5354	11243	40.4	19.3
Pvt. Unaided	0	0	0	0	0.0	0.0
Permanent Unaided	918	508357	13271	0	38.3	0.0
Self Finance	26	3286	145	157	22.7	20.9
Vedic/sanskrit/Dharmic School	0	0	0	0	0.0	0.0
Madarsa recognized	0	0	0	0	0.0	0.0
Madarsa unrecognized	0	0	0	0	0.0	0.0
Others	0	0	0	0	0.0	0.0
No Response	0	0	0	0	0.0	0.0
Private Unaided	1589	728454	18802	11446	38.7	63.6
Un-Recognised	55	11553	450	449	25.7	25.7
Grand Total	4508	1527848	40334	30365	37.9	50.3