



District Profile

Based on Unified District Information System for Education (UDISE), 2015-16

District : Jalna

1 – Demographic (Source : Census of India,2011)

	Male	Female	Person	Sex Ratio	Child Sex Ratio (0-6 years)
Population	1,015,116	943,367	1,958,483		
Literacy rate	85.3	61.3	73.6	929	847

2- Number of Schools by Management and Category (Class 1 to 12)

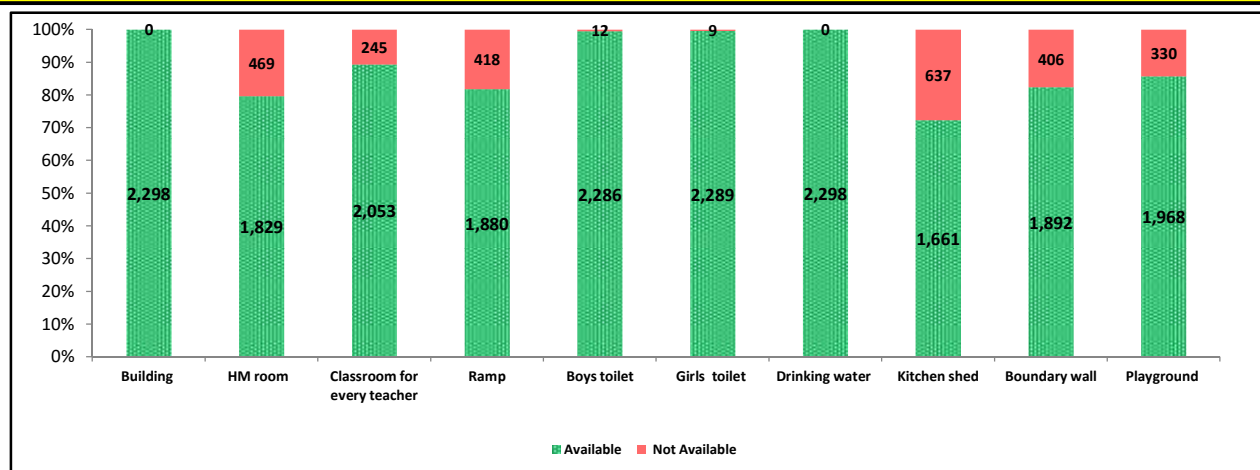
Indicator (Number of schools)	Govt. and Local bodies	Pvt. Aided	Pvt. Unaided	Un-recognised	Total
Primary (1-4/5)	984	35	144	3	1,166
Primary with Upper Primary (1-7/8)	552	69	70	0	691
Pri,Upper,Secondary with Hsecondary (1 to 12)	0	26	5	0	31
Only Upper Primary (5/6 to 7/8)	0	0	2	0	2
Upper,Secondary with Hsecondary (5/6 to 12)	2	54	8	0	64
Primary,Upperprimary with Secondary(1 to 10)	2	9	18	0	29
Upperprimary with Secondary(5/6 to 10)	36	86	32	0	154
Secondary Only (8/9 to 10)	0	16	59	0	75
Secondary with HSecondary(8/9 to 12)	0	12	10	0	22
Higher Secondary with college attached (11 to 12)	0	12	52	0	64
Total	1,576	319	400	3	2,298
Having Primary level classes	1,538	139	237	3	1,917
Having Upper Primary level classes	592	244	135	0	971
Having Secondary level classes	40	203	132	0	375
Having HigherSecondary level classes	2	104	75	0	181
Ratio of Primary to Upper Primary schools	State average				1.9
	District				2.0

3 - Number of Mediumwise Schools by Management .(Class 1 to 12)

Indicator (Number of Mediumwise schools)	Govt. and Local bodies	Pvt. Aided	Pvt. Unaided	Un-recognised	Total
Marathi	1,512	267	175	0	1,954
English	0	2	164	3	169
Hindi	0	10	0	0	10
Urdu	64	40	61	0	165
Bangali	0	0	0	0	0
Gujrati	0	0	0	0	0
Kannada	0	0	0	0	0
Sindhi	0	0	0	0	0
Tamil	0	0	0	0	0
Telgu	0	0	0	0	0
Sanskrit	0	0	0	0	0

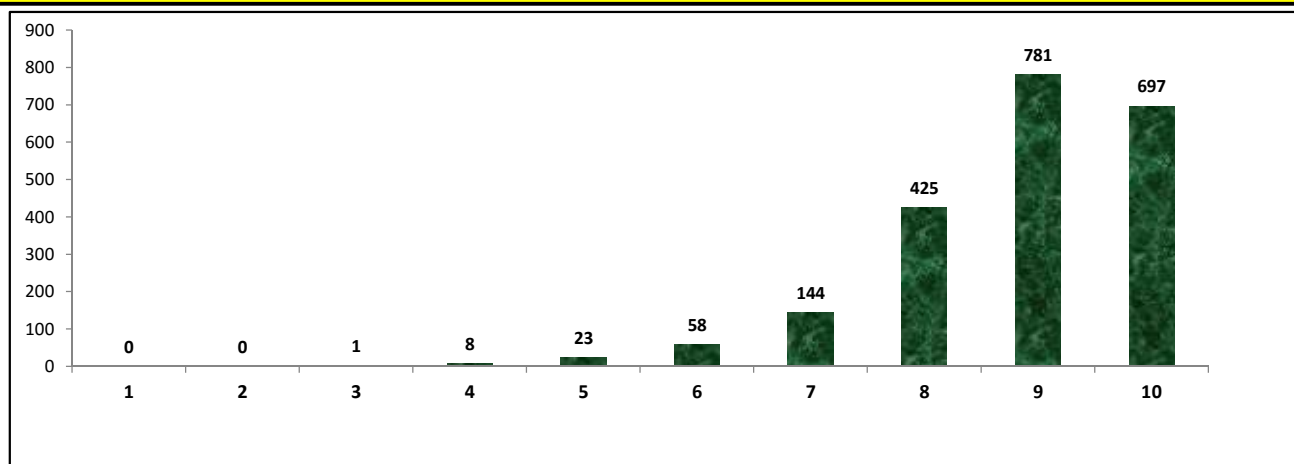
4 – Infrastructure at Elementry Level

Status of Infrastructure Facilities in Schools (Numbers, All schools)



Indicator : Schools with infrastructure facilities available (Sch.All)		Govt. and Local bodies	Pvt. Aided	Pvt. Unaided	Un-recognised	Total
Total Schools		1576	319	400	3	2298
1. Building	Number	1,576	319	400	3	2,298
	%	100.00	100.00	100.00	100.00	100.00
2. Office-cum-store-cum-HM room	Number	1,166	309	353	1	1,829
	%	73.98	96.87	88.25	33.33	79.59
3. One classroom for every teacher	Number	1,428	261	361	3	2,053
	%	90.61	81.82	90.25	100.00	89.34
4. Ramp	Number	1,440	223	216	1	1,880
	%	91.37	69.91	54.00	33.33	81.81
5. Separate toilet for boys	Number	1,565	318	400	3	2,286
	%	99.30	99.69	100.00	100.00	99.48
6. Separate toilet for girls	Number	1,567	319	400	3	2,289
	%	99.43	100.00	100.00	100.00	99.61
7. Drinking water facility	Number	1,576	319	400	3	2,298
	%	100.00	100.00	100.00	100.00	100.00
8. Kitchen shed (Gov & Aided Schools)	Number	1,473	188	NA	NA	1,661
	%	93.46	58.93	NA	NA	87.65
9. Boundary wall	Number	1,428	221	240	3	1,892
	%	90.61	69.28	60.00	100.00	82.33
10. Playground	Number	1,310	304	352	2	1,968
	%	83.12	95.30	88.00	66.67	85.64
Indicators		Govt. and Local bodies	Pvt. Aided	Pvt. Unaided	Un-recognised	Total
Number of classrooms(1 to 8)		6,972	2,147	1,737	17	10,873
Number of classrooms(9 to 10)		128	696	336	0	1,160
Number of classrooms(11 to 12)		8	449	287	0	744
Student Classroom Ratio (SCR) Primary		20	UpperPri.	30	Elementry	29
Primary schools having SCR more than 30	Number	130	22	27	0	179
	%	13.21	62.86	18.75	0.00	15.35
Upper Primary. schools having SCR more than 35	Number	17	96	18	0	131
	%	2.87	39.34	13.33	0.00	13.49
Schools fulfilling "10" infrastructure norms for building under RTE(Ele.Sch.)	Number	604	92	1	0	697
	%	38.32	29.97	0.29	0.00	31.20

Number of schools by number of infrastructure elements compliance



5- Enrolment (Class 1 to 12)

Number of students enrolled in		Govt. and Local bodies	Pvt. Aided	Pvt. Unaided	Un-recognised	Total
Primary Classes (1-5)	Boys	65,090	21,893	20,013	81	107,077
	Girls	63,680	18,540	11,891	30	94,141
	Total	128,770	40,433	31,904	111	201,218
Upper Primary Classes (6-8)	Boys	20,314	32,949	8,533	0	61,796
	Girls	23,825	27,845	5,813	0	57,483
	Total	44,139	60,794	14,346	0	119,279
Secondary Classes (9-10)	Boys	3,229	25,702	7,521	0	36,452
	Girls	3,051	20,509	4,639	0	28,199
	Total	6,280	46,211	12,160	0	64,651
Higher Secondary Classes (11-12)	Boys	90	21,626	7,809	0	29,525
	Girls	100	14,149	4,358	0	18,607
	Total	190	35,775	12,167	0	48,132
Elementary Classes (1-8)	Boys	85,404	54,842	28,546	81	168,873
	Girls	87,505	46,385	17,704	30	151,624
	Total	172,909	101,227	46,250	111	320,497
All Classes (1-12)	Boys	88,723	102,170	43,876	81	234,850
	Girls	90,656	81,043	26,701	30	198,430
	Total	179,379	183,213	70,577	111	433,280

5.1- Castewise Enrolment (Class 1 to 12)

Indicator	Primary	Upper Primary	Secondary	Higher Sec.	Elementary	All
All Social Groups	201,218	119,279	64,651	48,132	320,497	433,280
General	90,587	50,792	28,388	190,989	141,379	360,756
Schedule Castes (SC)	31,692	20,107	10,612	7,670	51,799	70,081
Schedule Tribes (ST)	5,957	3,053	1,496	1,219	9,010	11,725
Other Backward Classes (OBC)	72,982	45,327	24,155	18,021	118,309	160,485
Muslim	32,812	18,314	8,338	4,251	51,126	63,715
Nomadic Tribes (NT)	17,853	9,741	4,815	3,334	27,594	35,743
Vimukat Jatis (VJ)	19,193	9,489	3,848	2,791	28,682	35,321
Special Backward Classes (SBC)	1,435	1,132	662	447	2,567	3,676
Bouddhist Minority	11,403	6,404	3,242	2,617	17,807	23,666
Parshi Minority	60	10	7	122	70	199
Christan Minority	736	423	189	212	1,159	1,560
Sikh Minority	56	24	25	69	80	174
Jain Minority	540	274	187	238	814	1,239
B. P. L.	21,527	9,760	3,125	640	31,287	35,052
Children with Special Needs (C.W.S.N.)	2,704	1,311	358	55	4,015	4,428

5.2- Mediumwise Enrolment (Class 1 to 12)

Indicator (Number of Mediumwise schools)	Govt. and Local bodies	Pvt. Aided	Pvt. Unaided	Un-recognised	Total
Marathi	170,671	161,794	34,166	0	366,631
English	0	2,266	27,448	111	29,825
Hindi	0	3,899	0	0	3,899
Urdu	8,708	15,254	8,963	0	32,925
Bangali	0	0	0	0	0
Gujrati	0	0	0	0	0
Kannada	0	0	0	0	0
Sindhi	0	0	0	0	0
Tamil	0	0	0	0	0
Telgu	0	0	0	0	0
Sanskrit	0	0	0	0	0
School size (Distribution of schools by Enrolment)	Govt. and Local bodies	Pvt. Aided	Pvt. Unaided	Un-recognised	Total
Less than 10	25	0	18	0	43
11-20	224	4	26	0	254
21-30	224	4	26	0	254
31-60	316	5	61	0	382
61-150	435	20	104	1	560
More than 150	576	290	191	2	1,059

6- Gender Gap in Enrolment (in %)

Indicator	Primary	Upper Primary	Secondary	Higher Secondary	Elementry	All
All Social Groups	6.50	3.70	12.80	12.80	5.40	8.50
General	7.30	3.30	10.40	10.40	5.90	8.10
Schedule Castes (SC)	3.50	2.40	16.40	16.40	3.10	7.30
Schedule Tribes (ST)	4.50	7.20	21.30	21.30	5.40	10.10
Other Backward Classes (OBC)	6.90	4.40	13.50	10.90	5.50	7.30
Muslim	1.60	1.50	11.90	11.90	1.60	4.30
Nomadic Tribes (NT)	6.60	2.80	12.20	12.20	5.30	7.90
Vimukat Jatis (VJ)	6.10	3.10	16.40	16.40	5.10	8.20
Special Backward Classes (SBC)	8.60	1.60	10.90	10.90	5.50	7.30
Bouddhist Minority	4.20	6.00	16.00	16.00	4.90	8.50
Parshi Minority	10.00	60.00	71.50	71.50	17.20	18.60
Christan Minority	0.00	0.00	5.90	5.90	0.00	0.30
Sikh Minority	14.30	8.40	20.00	20.00	12.50	24.20
Jain Minority	13.40	1.50	4.90	4.90	9.40	4.50
B. P. L.	16.80	10.20	7.70	7.70	14.70	14.00
Children with Special Needs (C.W.S.N.)	15.60	16.80	26.80	26.80	0.00	16.60
No. of clusters having gender gap > 10 %	16	7	61	57	10	25
No. of Block having gender gap > 10 %	0	0	6	8	0	1

7- Teacher (Class 1 to 12)

Indicators	Govt. and Local bodies	Pvt. Aided	Pvt. Unaided	Un-recognised	Total
Number of Teachers	Male	4,769	3,664	1,444	9,878
	Female	1,654	754	696	3,118
	Total	6,423	4,418	2,140	15
Percentage of female teachers to total teachers	25.75	17.07	32.52	93.33	23.99
Schools without a female teacher	Number	798	109	156	1,063
	%	50.63	34.17	39.00	0.00

7.1- Mediumwise Teacher (Class 1 to 12)

Medium	Govt. and Local bodies	Pvt. Aided	Pvt. Unaided	Un-recognised	Total
Marathi	6,165	3,891	949	0	11,005
English	0	52	930	15	997
Hindi	0	102	0	0	102
Urdu	258	373	261	0	892
Bangali	0	0	0	0	0
Gujrati	0	0	0	0	0
Kannada	0	0	0	0	0
Sindhi	0	0	0	0	0
Tamil	0	0	0	0	0
Telgu	0	0	0	0	0
Sanskrit	0	0	0	0	0

7.2- Castewise Teacher (Class 1 to 12)

Caste	Govt. and Local bodies	Pvt. Aided	Pvt. Unaided	Un-recognised	Total
All	6,423	4,418	2,140	15	12,996
Genral	2,835	2,489	1,390	10	6,724
SC	824	480	199	2	1,505
ST	331	178	76	0	585
OBC	1,180	662	284	2	2,128
VJ	2	0	0	0	2
OTHER	0	0	0	0	0
SBC	405	319	85	0	809
NT-B	147	49	35	0	231
NT-C	299	108	32	1	440
NT-D	400	133	39	0	572

Indicators		Govt. and Local bodies	Pvt. Aided	Pvt. Unaided	Un-recognised	Total
Schools with single teacher	Number	27	0	26	0	53
	%	1.71	0.00	6.50	0.00	2.31
PTR	Local Body-Only	Primary Section	Upper Primary Section	Secondary Section	Elementry Section	All (Class 1-12)
Pupil Teacher Ratio	28	32	34	27	33	33

Indicators		Govt. and Local bodies	Pvt. Aided	Pvt. Unaided	Un-recognised	Total
Primary schools having PTR more than 30	Number	211	23	36	0	270
	%	21.44	65.71	25.00	0.00	23.16
Upper Primary having PTR more than 35	Number	130	114	35	0	279
	%	21.96	46.72	25.93	0.00	28.73
Trained /Untrained Teacher	Primary Section	Upper Primary Section	Secondary Section	Higher Secondary Section	Elementry Section	All
Teacher All	6,287	3,475	2,381	853	9,762	12,996
Trained Teacher Number	6,287	3,475	2,381	853	9,762	12,996
%	100.00	100.00	100.00	100.00	100.00	100.00
Untrained Teacher All Number	0	0	0	0	0	0
%	0.00	0.00	0.00	0.00	0.00	0.00

8-Efficiency indicators

8.1 Annual Average Drop-out Rate

Social Groups	Primary			UpperPrimary		
	Boys	Girls	Total	Boys	Girls	Total
All Social Groups	4.11	2.96	3.57	2.88	6.51	4.61
General	5.01	3.07	4.10	3.24	6.77	4.94
Schedule Castes (SC)	3.92	3.04	3.49	4.39	8.34	6.27
Schedule Tribes (ST)	8.43	6.32	7.43	5.67	16.34	10.71
Other Backward Classes (OBC)	2.74	2.52	2.64	1.57	4.63	3.01
Vimukat Jatis (VJ)	11.68	10.19	10.98	13.77	17.63	15.63
Nomadic Tribes (NT)	2.57	2.86	2.71	7.58	15.45	11.47
Special Backward Classes (SBC)	0.00	0.00	0.00	0.00	0.00	0.00
Muslim	4.30	5.33	4.81	1.51	7.46	4.44

8.2 Transition Rate

Social Groups	Primary			UpperPrimary		
	Boys	Girls	Total	Boys	Girls	Total
All Social Groups	95.37	96.73	96.03	97.12	87.76	92.76
General	93.39	95.10	94.22	95.97	87.46	91.94
Schedule Castes (SC)	95.00	97.03	96.00	95.48	84.46	90.47
Schedule Tribes (ST)	90.08	90.42	90.24	89.96	80.54	85.84
Other Backward Classes (OBC)	98.23	99.00	98.60	99.83	99.83	95.38
VJ / NT	88.28	88.63	88.45	87.88	73.45	80.93
Special Backward Classes (SBC)	122.50	131.97	126.60	135.33	90.00	111.25
Muslim	98.76	94.13	96.40	100.74	89.17	95.25

8.3 Gender Parity Index (GPI)

Social Groups	Primary Section	Upper Primary Section	Secondary Section	Higher Secondary	Elementry Section	All (Class 1-12)
All Social Groups	0.88	0.93	0.77	0.63	0.90	0.84
General	0.86	0.94	0.81	0.67	0.89	0.85
Schedule Castes (SC)	0.93	0.95	0.72	0.72	0.94	0.86
Schedule Tribes (ST)	0.91	0.87	0.65	0.54	0.90	0.82
Other Backward Classes (OBC)	0.87	0.92	0.76	0.60	0.89	0.83
Vimukat Jatis (VJ)	0.89	0.94	0.72	0.55	0.90	0.85
Nomadic Tribes (NT)	0.88	0.95	0.78	0.63	0.90	0.85
Special Backward Classes (SBC)	0.84	0.97	0.80	0.78	0.90	0.86
Muslim	0.97	0.97	0.79	0.64	0.97	0.92

8.4 Retention Rate

Social Groups	Primary			UpperPrimary		
	Boys	Girls	Total	Boys	Girls	Total
All Social Groups	89.67	93.40	91.42	96.48	96.48	95.27
General	84.65	90.51	87.36	97.16	97.16	94.34
Schedule Castes (SC)	88.05	90.34	89.14	94.02	92.48	93.26
Schedule Tribes (ST)	77.11	80.74	78.78	91.85	79.16	85.82
Other Backward Classes (OBC)	98.49	99.81	99.12	97.16	95.30	96.28
Muslim	90.20	90.16	91.42	86.51	84.31	95.27

9. Right To Education (RTE) Information

Subject		Govt. & Local Bodies	Private Aided	Private Un-Aided	Unrecognised	Total
Elementary Schools All(Classes Having 1 to 8)		1,576	279	279	3	2,137
No of Schools CCE being implemented in school	No of Schools	1,576	279	242	1	2,098
	%	100.00	100.00	86.74	33.33	98.18
No of Schools having maintained pupil cumulative records	No of Schools	1,576	279	242	1	2,098
	%	100.00	100.00	86.74	33.33	98.18
No. of Schools having shared pupil cumulative records with parents	No of Schools	1,575	276	235	1	2,087
	%	99.94	98.92	84.23	33.33	97.66
No. of Schools having Constituted SMC	No of Schools	1,576	279	NA	NA	1,855
	%	100.00	100.00	NA	NA	100.00
No. of Schools having Constituted SMDC	No of Schools	40	209	NA	NA	249
	%	2.54	74.91	NA	NA	13.42
No. of Schools having Constituted SMC & SMDC are same	No of Schools	10	77	NA	NA	87
	%	0.63	27.60	NA	NA	4.69
Avg. total no. of SMC Members in schools	Male	7	7	NA	NA	7
	Female	6	5	NA	NA	5
Avg. no. of representative of parents / Guardians / PTA in SMC	Male	5	4	NA	NA	4
	Female	5	4	NA	NA	4
Avg. no. of representative of local authorities / local government /urban local	Male	1	1	NA	NA	1
	Female	1	1	NA	NA	0
Avg. no. of SMC meetings held in previous year		8	4	NA	NA	7
No.. of Schools having prepared SDP		1,575	273	NA	NA	1,949
No. of Schools having maintained separate SMC bank accounts		1,560	224	NA	NA	1,849
Avg. no. of instructional days of school in previous year	Primary	235	235	233	232	235
	Upper Primary	235	235	235	0	235
	Secondary	235	235	234	1	235
	Higher Secondary	238	234	235	0	235
Avg. of staying childrens hours in schools per day	Primary	7.0	7.3	6.8	8.0	7.0
	Upper Primary	7.0	7.2	7.0	0.0	7.0
	Secondary	5.7	5.7	5.7	1.0	1710.0
	Higher Secondary	6.0	5.7	5.7	0.0	726.0
Avg. of teachers working hours in school per day	Primary	7.0	7.3	6.8	8.0	7.0
	Upper Primary	7.0	7.1	7.0	0.0	7.0
	Secondary	6.9	7.1	6.9	1.0	1710.0
	Higher Secondary	6.0	6.9	6.8	0.0	726.0
No of Schools having complete set of free text book received	Primary	1,522	121	32	1	1,676
	Upper Primary	563	123	8	0	694
No of Schools having TLE available for each grade	Primary	1,479	118	112	1	1,710
	Upper Primary	552	122	52	0	726
No of Schools having playing material, games and sports equipment available for each grade\	Primary	821	107	110	1	1,039
	Upper Primary	347	109	50	0	506
No. of Schools having any children enrolled in school special training	Schools	4	51	1	0	56
No of Children Enrolled for Special Training in Previous Year	Boys	40	51	33	0	124
	Girls	4	2	1	0	7
No of Children Provided for Special Training in Previous Year	Boys	40	51	33	0	124
	Girls	4	51	1	0	56

9. Right To Education (RTE) Information

Subject		Govt. & Local Bodies	Private Aided	Private Un-Aided	Unrecognised	Total
Elementary Schools All (Classes Having 1 to 8)		1,576	279	279	3	2,137
No of Children Enrolled for Special Training in Current Year	Boys	263	69	70	0	402
	Girls	41	12	1	0	54
No of Children Provided for Special Training in Current Year	Boys	135	567	260	0	962
	Girls	9	199	287	0	495
No. of Childrens completed special training during previous year	School Teachers	21	6	2	0	29
	Specially engaged	0	0	0	0	0
	Both	0	0	0	0	0
	NGO	0	0	0	0	0
	Other	0	0	0	0	0
Special training is conducted in	None	0	0	0	0	0
	School premises	76	23	5	0	104
	Other than School premises	57	7	2	0	66
Type of Training	Both	6	0	1	0	7
	Residential	112	5	5	0	122
	Non Residential	41	5	5	0	51
	Both	0	1	2	0	3

10. CWSN with Special Needs (Current Year)

Type of Facility	Elementary			Secondary / Hsecondary		
	Boys	Girls	Total	Boys	Girls	Total
Visual Impairment (Blindness)-TB	160	122	282	26	19	45
Visual Impairment (Low vision) -LV	275	254	529	33	31	64
Hearing impairment-HI	188	121	309	19	9	28
Speech impairment-SI	211	154	365	25	4	29
Loco Motor Impairment-OH	609	377	986	122	75	197
Mental Retardation-MR	431	282	713	9	4	13
Learning disability-LD	224	207	431	9	16	25
Cerebral Palsy-CP	26	29	55	2	2	4
Autism-ASD	21	19	40	0	0	0
Multiple disability-MD	184	121	305	4	4	8
Total	2,329	1,686	4,015	249	164	413
Grand Total (Class 1 to 12)	2,578	1,850	4,428			

11. Facilities provided to CWSN (Previous Year)

Type of Facility	Elementary			Secondary / Hsecondary		
	Boys	Girls	Total	Boys	Girls	Total
Brail Books	26	12	38	0	0	0
Brail Kit	1	1	2	0	0	0
Low vision Kit	0	0	0	0	0	0
Hearing aid	20	9	29	0	0	0
Braces	0	1	1	0	0	0
Crutches	0	1	1	0	0	0
Wheel Chair	35	12	47	1	2	3
Tri-Cycle	8	5	13	0	1	1
Caliper	9	10	19	0	0	0
Total	99	51	150	1	3	4
Grand Total (Class 1 to 12)	100	54	154			

Educational Development Index

Management	All
Indicator / District Ranks	
Access	
01. Density of Schools per 10 Sq.Km. All	2.77
02. Availability of schools per 1000 child population census	6.50
03. Ratio of primary to Upper Primary Schools/Sections	1.97
Infrastructure	
04. % of Schools with SCR>30	9.34
05. % of Schools with SCR>35	13.49
06. Percentage of Schools with 1:1 Classroom Teacher Ratio	88.54
07. % of Schools with Water facility	100.00
08. % of Schools with Boys Toilet	99.44
09. % of Schools with Girls Toilets	99.58
10. % of Schools with Ramp	84.37
11. % of Schools with Kitchen Shead (Gov & Aided)	76.98
Teacher	
12. % of schools with female teachers (in schools with 2 and more teachers)	53.74
13. % of Schools with PTR>30	14.08
14. % of Schools with PTR>35	28.73
15. % of Single Teacher Schools	2.31
16. % without Professional Qualification	0.00
OutComes	
17. Average number of instructional days -Primary	234.78
18. Average number of instructional days -Upper Primary	235.06
19. Average working hours for teachers-Primary	6.99
20. Average working hours for teachers-Upper Primary	7.00
21. % of change in enrollment in Gov schools over the previous year	0.00
22. Gross Enrollment Ratio	95.81
23. Retention Rate	91.42
24. Participation of SC children ((% of SC Population (2001 census)- % of SC Enrollment)	16.16
25. Participation of ST children ((% of ST Population (2001 census)- % of ST Enrollment)	2.81
26. Participation of Muslim children ((% of Muslim Population (2001 census)-% of Muslim Enrollment)	15.95
27. Ratio of Girls Enrollment to Boys Enrollment	0.90
28. DROPOUT RATE	3.57
29. Transition Rate for primary to upper primary	96.03

Schools ,Enrollment & Teachers (Class 1 to 12)

Management	Schools	Enrollments	Teachers	Classrooms	PTR	SCR
Department of Education	0	0	0	0	0.0	0.0
Zilla Parishad	1553	176280	6267	6989	28.1	25.2
MNC	0	0	0	0	0.0	0.0
Nagar Palika	19	2023	112	90	18.1	22.5
Local body	0	0	0	0	0.0	0.0
Cantonment Board	0	0	0	0	0.0	0.0
Tribal/Social Welfare Dept.	0	0	0	0	0.0	0.0
Social Welfare	3	570	21	15	27.1	38.0
Tribal Welfare	0	0	0	0	0.0	0.0
Central Govt.	0	0	0	0	0.0	0.0
Central School	0	0	0	0	0.0	0.0
Govt Military School	0	0	0	0	0.0	0.0
Navoday Vodyalay	1	506	23	14	22.0	36.1
Railway School	0	0	0	0	0.0	0.0
Gov & Local Body	1576	179379	6423	7108	27.9	25.2
Social Welfare Aided	25	5322	171	165	31.1	32.3
Tribal Welfare Aided	1	404	13	10	31.1	40.4
Pvt. Aided	276	170536	4063	2984	42.0	57.2
Partially Aided	16	6402	141	118	45.4	54.3
Pvt. Military School	1	549	30	15	18.3	36.6
Private Aided	319	183213	4418	3292	41.5	55.7
Social Welfare Unaided	6	686	40	41	17.2	16.7
Tribal Welfare Unaided	0	0	0	0	0.0	0.0
Unaided	147	32335	860	813	37.6	39.8
Pvt. Unaided	0	0	0	0	0.0	0.0
Permanent Unaided	115	29195	880	960	33.2	30.4
Self Finance	125	7569	339	506	22.3	15.0
Vedic/sanskrit/Dharmic School	0	0	0	0	0.0	0.0
Madarsa recognized	3	164	5	28	32.8	5.9
Madarsa unrecognized	4	628	16	12	39.3	52.3
Others	0	0	0	0	0.0	0.0
No Response	0	0	0	0	0.0	0.0
Private Unaided	400	70577	2140	2360	33.0	29.9
Un-Recognised	3	111	15	17	7.4	6.5
Grand Total	2298	433280	12996	12777	33.3	33.9