



## District Profile

Based on Unified District Information System for Education (UDISE), 2015-16

District : Satara

1 – Demographic (Source : Census of India,2011)

	Male	Female	Person	Sex Ratio	Child Sex Ratio (0-6 years)
Population	1,512,524	1,491,398	3,003,922		
Literacy rate	92.1	76.3	84.2	986	881

2- Number of Schools by Management and Category (Class 1 to 12)

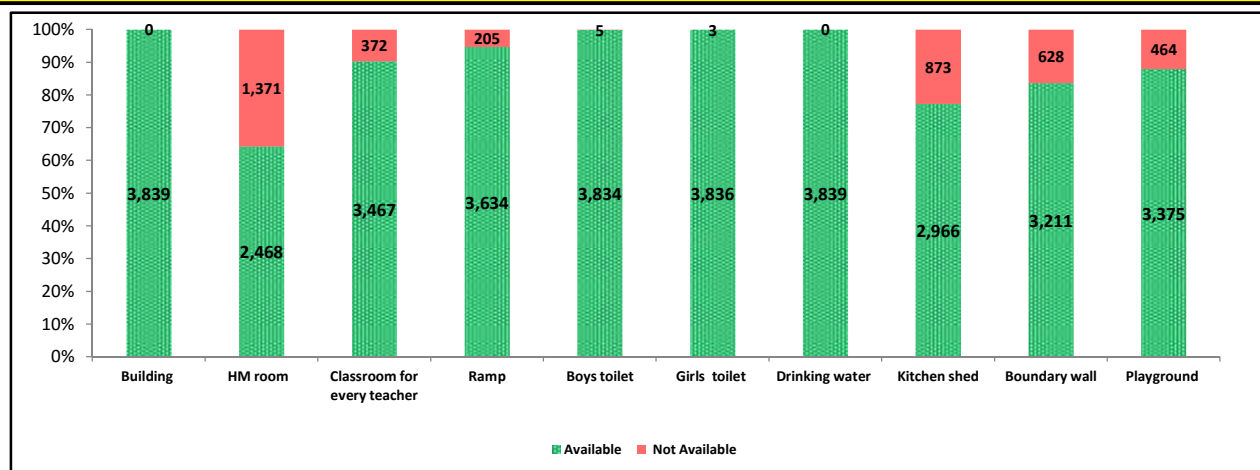
Indicator (Number of schools )	Govt. and Local bodies	Pvt. Aided	Pvt. Unaided	Un-recognised	Total
Primary (1-4/5)	1,925	65	80	10	2,080
Primary with Upper Primary (1-7/8)	849	48	96	3	996
Pri,Upper,Secondary with Hsecondary (1 to 12)	0	16	27	0	43
Only Upper Primary (5/6 to 7/8)	1	0	0	0	1
Upper,Secondary with Hsecondary (5/6 to 12)	5	116	4	0	125
Primary,Upperprimary with Secondary(1 to 10)	2	17	53	0	72
Upperprimary with Secondary(5/6 to 10)	0	254	11	1	266
Secondary Only (8/9 to 10)	0	147	61	0	208
Secondary with HSecondary(8/9 to 12)	0	9	2	0	11
Higher Secondary with college attached (11 to 12)	1	21	15	0	37
<b>Total</b>	<b>2,783</b>	<b>693</b>	<b>349</b>	<b>14</b>	<b>3,839</b>
Having Primary level classes	2,776	146	256	13	3,191
Having Upper Primary level classes	857	451	191	4	1,503
Having Secondary level classes	7	559	158	1	725
Having HigherSecondary level classes	6	162	48	0	216
Ratio of Primary to Upper Primary schools	State average				1.9
	District				2.2

3 - Number of Mediumwise Schools by Management .(Class 1 to 12)

Indicator (Number of Mediumwise schools )	Govt. and Local bodies	Pvt. Aided	Pvt. Unaided	Un-recognised	Total
Marathi	2,767	682	101	4	3,554
English	1	4	233	10	248
Hindi	0	0	0	0	0
Urdu	15	7	15	0	37
Bangali	0	0	0	0	0
Gujrati	0	0	0	0	0
Kannada	0	0	0	0	0
Sindhi	0	0	0	0	0
Tamil	0	0	0	0	0
Telgu	0	0	0	0	0
Sanskrit	0	0	0	0	0

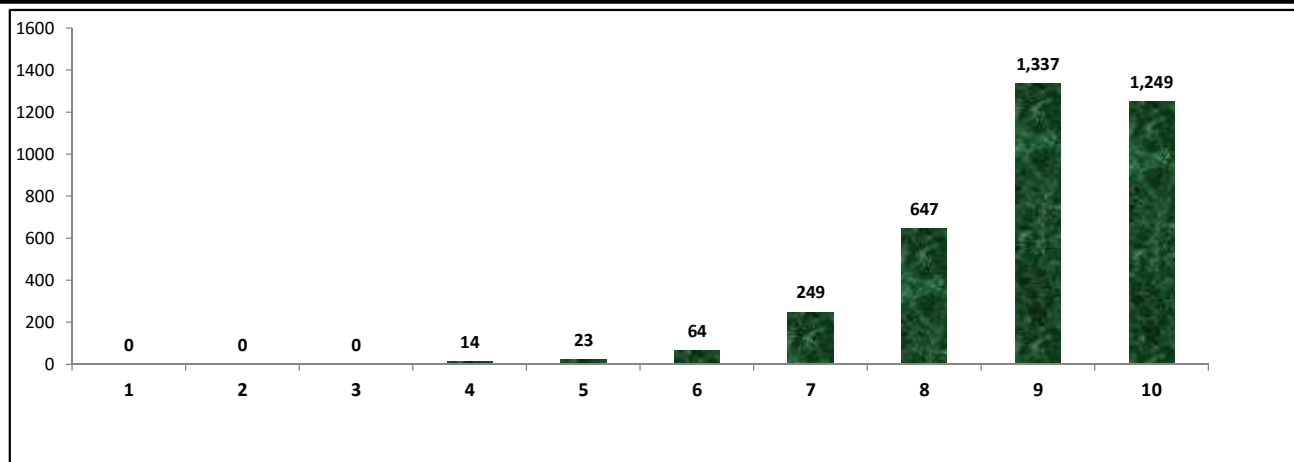
## 4 – Infrastructure at Elementry Level

### Status of Infrastructure Facilities in Schools (Numbers, All schools)



Indicator : Schools with infrastructure facilities available (Sch.All)		Govt. and Local bodies	Pvt. Aided	Pvt. Unaided	Un-recognised	Total
<b>Total Schools</b>		<b>2783</b>	<b>693</b>	<b>349</b>	<b>14</b>	<b>3839</b>
1. Building	Number	2,783	693	349	14	3,839
	%	100.00	100.00	100.00	100.00	100.00
2. Office-cum-store-cum-HM room	Number	1,503	628	325	12	2,468
	%	54.01	90.62	93.12	85.71	64.29
3. One classroom for every teacher	Number	2,494	670	292	11	3,467
	%	89.62	96.68	83.67	78.57	90.31
4. Ramp	Number	2,675	652	302	5	3,634
	%	96.12	94.08	86.53	35.71	94.66
5. Separate toilet for boys	Number	2,782	691	349	12	3,834
	%	99.96	99.71	100.00	85.71	99.87
6. Separate toilet for girls	Number	2,782	693	349	12	3,836
	%	99.96	100.00	100.00	85.71	99.92
7. Drinking water facility	Number	2,783	693	349	14	3,839
	%	100.00	100.00	100.00	100.00	100.00
8. Kitchen shed (Gov & Aided Schools)	Number	2,511	455	NA	NA	2,966
	%	90.23	65.66	NA	NA	85.33
9. Boundary wall	Number	2,493	493	214	11	3,211
	%	89.58	71.14	61.32	78.57	83.64
10. Playground	Number	2,360	675	326	14	3,375
	%	84.80	97.40	93.41	100.00	87.91
<b>Indicators</b>		<b>Govt. and Local bodies</b>	<b>Pvt. Aided</b>	<b>Pvt. Unaided</b>	<b>Un-recognised</b>	<b>Total</b>
Number of classrooms(1 to 8)		8,962	3,785	2,049	64	14,860
Number of classrooms(9 to 10)		24	1,952	355	2	2,333
Number of classrooms(11 to 12)		25	982	141	0	1,148
<b>Student Classroom Ratio (SCR) Primary</b>		<b>17</b>	<b>UpperPri.</b>	<b>22</b>	<b>Elementry</b>	<b>24</b>
Primary schools having SCR more than 30	Number	60	43	17	0	120
	%	3.12	66.15	21.25	0.00	5.77
Upper Primary. schools having SCR more than 35	Number	1	81	6	0	88
	%	0.12	17.96	3.14	0.00	5.85
<b>Schools fulfilling "10" infrastructure norms for building under RTE(Ele.Sch.)</b>	Number	949	298	2	0	1,249
	%	34.11	44.35	0.60	0.00	32.85

**Number of schools by number of infrastructure elements compliance**



**5- Enrolment (Class 1 to 12)**

Number of students enrolled in		Govt. and Local bodies	Pvt. Aided	Pvt. Unaided	Un-recognised	Total
Primary Classes (1-5)	Boys	63,768	25,955	24,929	457	115,109
	Girls	63,476	22,930	15,686	288	102,380
	Total	127,244	48,885	40,615	745	217,489
Upper Primary Classes (6-8)	Boys	13,942	50,237	10,931	37	75,147
	Girls	14,400	44,857	6,301	30	65,588
	Total	28,342	95,094	17,232	67	140,735
Secondary Classes (9-10)	Boys	636	45,724	6,400	13	52,773
	Girls	267	38,499	3,547	19	42,332
	Total	903	84,223	9,947	32	95,105
Higher Secondary Classes (11-12)	Boys	504	39,032	2,842	0	42,378
	Girls	308	32,802	1,385	0	34,495
	Total	812	71,834	4,227	0	76,873
Elementary Classes (1-8)	Boys	77,710	76,192	35,860	494	190,256
	Girls	77,876	67,787	21,987	318	167,968
	Total	155,586	143,979	57,847	812	358,224
All Classes (1-12)	Boys	78,850	160,948	45,102	507	285,407
	Girls	78,451	139,088	26,919	337	244,795
	Total	157,301	300,036	72,021	844	530,202

**5.1- Castewise Enrolment (Class 1 to 12)**

Indicator	Primary	Upper Primary	Secondary	Higher Sec.	Elementary	All
All Social Groups	217,489	140,735	95,105	76,873	358,224	530,202
General	114,710	75,580	52,470	286,217	190,290	528,977
Schedule Castes (SC)	27,106	17,786	11,875	8,885	44,892	65,652
Schedule Tribes (ST)	4,091	1,933	924	502	6,024	7,450
Other Backward Classes (OBC)	71,582	45,436	29,836	24,029	117,018	170,883
Muslim	12,553	7,639	4,479	2,215	20,192	26,886
Nomadic Tribes (NT)	23,037	14,247	8,857	5,711	37,284	51,852
Vimukat Jatis (VJ)	12,156	7,075	4,150	2,120	19,231	25,501
Special Backward Classes (SBC)	1,155	891	769	847	2,046	3,662
Bouddhist Minority	3,661	1,876	982	984	5,537	7,503
Parshi Minority	25	12	17	4	37	58
Christan Minority	182	161	107	92	343	542
Sikh Minority	95	61	26	10	156	192
Jain Minority	559	393	252	139	952	1,343
B. P. L.	7,778	5,033	2,874	1,612	12,811	17,297
Children with Special Needs (C.W.S.N.)	4,543	2,834	1,058	196	7,377	8,631

## 5.2- Mediumwise Enrolment (Class 1 to 12)

Indicator (Number of Mediumwise schools )	Govt. and Local bodies	Pvt. Aided	Pvt. Unaided	Un-recognised	Total
Marathi	155,577	294,057	13,349	142	463,125
English	655	4,375	57,870	702	63,602
Hindi	0	0	0	0	0
Urdu	1,069	1,604	802	0	3,475
Bangali	0	0	0	0	0
Gujrati	0	0	0	0	0
Kannada	0	0	0	0	0
Sindhi	0	0	0	0	0
Tamil	0	0	0	0	0
Telgu	0	0	0	0	0
Sanskrit	0	0	0	0	0
School size (Distribution of schools by Enrolment)	Govt. and Local bodies	Pvt. Aided	Pvt. Unaided	Un-recognised	Total
Less than 10	255	0	8	0	263
11-20	573	1	20	4	598
21-30	573	1	20	4	598
31-60	519	18	50	6	593
61-150	608	201	110	3	922
More than 150	828	473	161	1	1,463

## 6- Gender Gap in Enrolment (in %)

Indicator	Primary	Upper Primary	Secondary	Higher Secondary	Elementry	All
All Social Groups	5.90	6.80	11.00	11.00	6.30	7.70
General	6.30	7.00	11.00	11.00	6.60	7.90
Schedule Castes (SC)	3.40	5.90	9.40	9.40	4.40	5.70
Schedule Tribes (ST)	8.40	13.20	23.00	23.00	9.90	11.80
Other Backward Classes (OBC)	6.10	6.70	11.30	13.20	4.30	3.70
Muslim	5.40	5.50	7.70	7.70	5.40	5.30
Nomadic Tribes (NT)	5.10	5.50	10.40	10.40	5.30	7.30
Vimukat Jatis (VJ)	4.60	4.90	8.30	8.30	4.70	5.60
Special Backward Classes (SBC)	2.70	6.20	13.20	13.20	4.30	3.70
Bouddhist Minority	6.90	10.10	12.10	12.10	8.00	7.50
Parshi Minority	12.00	0.00	41.20	41.20	8.20	20.70
Christan Minority	0.00	1.90	4.70	4.70	0.00	0.00
Sikh Minority	0.00	5.00	0.00	0.00	0.00	0.00
Jain Minority	7.70	3.90	5.60	5.60	6.10	5.80
B. P. L.	16.90	8.30	3.90	3.90	13.50	9.80
Children with Special Needs (C.W.S.N.)	17.80	17.70	14.70	14.70	0.00	17.50
No. of clusters having gender gap > 10 %	25	47	97	47	24	38
No. of Block having gender gap > 10 %	1	1	6	7	1	1

## 7- Teacher (Class 1 to 12)

Indicators	Govt. and Local bodies	Pvt. Aided	Pvt. Unaided	Un-recognised	Total	
Number of Teachers	Male	4,840	6,192	930	11,977	
	Female	4,151	2,854	1,917	8,967	
	<b>Total</b>	<b>8,991</b>	<b>9,046</b>	<b>2,847</b>	<b>60</b>	<b>20,944</b>
Percentage of female teachers to total teachers	46.17	31.55	67.33	75.00	42.81	
Schools without a female teacher	<b>Number</b>	<b>812</b>	<b>103</b>	<b>27</b>	<b>1</b>	<b>943</b>
	<b>%</b>	<b>29.18</b>	<b>14.86</b>	<b>7.74</b>	<b>7.14</b>	<b>24.56</b>

### 7.1- Mediumwise Teacher (Class 1 to 12)

Medium	Govt. and Local bodies	Pvt. Aided	Pvt. Unaided	Un-recognised	Total
Marathi	8,913	8,898	580	12	18,403
English	29	97	2,211	48	2,385
Hindi	0	0	0	0	0
Urdu	49	51	56	0	156
Bangali	0	0	0	0	0
Gujrati	0	0	0	0	0
Kannada	0	0	0	0	0
Sindhi	0	0	0	0	0
Tamil	0	0	0	0	0
Telgu	0	0	0	0	0
Sanskrit	0	0	0	0	0

### 7.2- Castewise Teacher (Class 1 to 12)

Caste	Govt. and Local bodies	Pvt. Aided	Pvt. Unaided	Un-recognised	Total
All	8,909	8,933	2,833	60	20,735
Genral	4,229	4,882	1,897	40	11,048
SC	1,214	1,043	273	5	2,535
ST	597	447	57	3	1,104
OBC	1,599	1,392	387	5	3,383
VJ	214	190	49	3	456
OTHER	67	58	38	0	163
SBC	193	214	31	1	439
NT-B	237	233	45	2	517
NT-C	362	370	53	1	786
NT-D	197	104	3	0	304

Indicators		Govt. and Local bodies	Pvt. Aided	Pvt. Unaided	Un-recognised	Total
Schools with single teacher	Number	32	1	4	2	39
	%	1.15	0.14	1.15	14.29	1.02
PTR	Local Body-Only	Primary Section	Upper Primary Section	Secondary Section	Elementry Section	All (Class 1-12)
Pupil Teacher Ratio	17	23	28	21	24	25

Indicators		Govt. and Local bodies	Pvt. Aided	Pvt. Unaided	Un-recognised	Total
Primary schools having PTR more than 30	Number	52	51	18	0	121
	%	2.70	78.46	22.50	0.00	5.82
Upper Primary having PTR more than 35	Number	17	123	34	0	174
	%	1.98	27.27	17.80	0.00	11.58
Trained /Untrained Teacher	Primary Section	Upper Primary Section	Secondary Section	Higher Secondary Section	Elementry Section	All
Teacher All	9,549	5,074	4,607	1,714	14,623	20,944
Trained Teacher Number	9,489	5,035	4,591	1,686	14,524	20,801
%	99.37	99.23	99.65	98.37	99.32	99.32
Untrained Teacher All Number	60	39	16	28	99	143
%	0.63	0.77	0.35	1.63	0.68	0.68

## 8-Efficiency indicators

### 8.1 Annual Average Drop-out Rate

Social Groups	Primary			UpperPrimary		
	Boys	Girls	Total	Boys	Girls	Total
All Social Groups	1.26	1.00	1.14	0.00	0.44	0.00
General	1.65	1.09	1.39	0.00	0.61	0.00
Schedule Castes (SC)	1.49	1.47	1.48	0.00	0.00	0.00
Schedule Tribes (ST)	0.00	0.00	0.00	0.69	11.24	5.35
Other Backward Classes (OBC)	1.40	0.97	1.20	0.00	0.05	0.00
Vimukat Jatis (VJ)	9.15	10.36	9.73	7.44	10.54	8.93
Nomadic Tribes (NT)	6.66	5.88	6.29	11.41	9.80	10.66
Special Backward Classes (SBC)	15.35	0.34	8.69	12.89	11.82	12.40
Muslim	2.41	0.00	1.04	0.00	0.00	0.00

### 8.2 Transition Rate

Social Groups	Primary			UpperPrimary		
	Boys	Girls	Total	Boys	Girls	Total
All Social Groups	99.79	99.50	99.66	106.37	100.20	103.56
General	99.38	100.05	99.70	104.87	100.39	102.86
Schedule Castes (SC)	100.75	99.13	99.98	112.02	102.03	107.33
Schedule Tribes (ST)	124.26	104.33	114.52	103.76	87.45	96.77
Other Backward Classes (OBC)	99.07	98.51	98.81	106.88	106.88	103.52
VJ / NT	89.13	90.97	89.98	93.68	89.28	91.63
Special Backward Classes (SBC)	80.79	69.54	75.21	95.77	89.77	93.06
Muslim	96.65	100.69	98.50	106.00	103.39	104.80

### 8.3 Gender Parity Index (GPI)

Social Groups	Primary Section	Upper Primary Section	Secondary Section	Higher Secondary	Elementry Section	All (Class 1-12)
All Social Groups	0.89	0.87	0.80	0.81	0.88	0.86
General	0.88	0.87	0.80	0.82	0.88	0.85
Schedule Castes (SC)	0.94	0.89	0.83	0.83	0.92	0.89
Schedule Tribes (ST)	0.85	0.77	0.63	0.77	0.82	0.79
Other Backward Classes (OBC)	0.89	0.88	0.80	0.78	0.88	0.85
Vimukat Jatis (VJ)	0.91	0.91	0.85	0.84	0.91	0.89
Nomadic Tribes (NT)	0.90	0.90	0.81	0.73	0.90	0.86
Special Backward Classes (SBC)	0.95	0.88	0.77	1.14	0.92	0.93
Muslim	0.90	0.90	0.86	1.03	0.90	0.90

### 8.4 Retention Rate

Social Groups	Primary			UpperPrimary		
	Boys	Girls	Total	Boys	Girls	Total
All Social Groups	96.02	96.54	96.26	98.68	98.68	98.55
General	94.44	95.71	95.03	98.05	98.05	97.50
Schedule Castes (SC)	95.92	94.87	95.42	97.98	97.43	97.72
Schedule Tribes (ST)	100.00	99.72	100.00	95.81	84.29	90.34
Other Backward Classes (OBC)	97.78	98.46	98.09	100.00	100.00	100.00
Muslim	95.43	96.04	96.26	94.64	95.12	98.55

## 9. Right To Education (RTE) Information

Subject	Govt. & Local Bodies	Private Aided	Private Un-Aided	Unrecognised	Total	
<b>Elementary Schools All(Classes Having 1 to 8)</b>	<b>2,782</b>	<b>516</b>	<b>271</b>	<b>14</b>	<b>3,583</b>	
No of Schools CCE being implemented in school	No of Schools	2,778	510	250	11	3,549
	%	99.86	98.84	92.25	78.57	99.05
No of Schools having maintained pupil cumulative records	No of Schools	2,778	510	250	11	3,549
	%	99.86	98.84	92.25	78.57	99.05
No. of Schools having shared pupil cumulative records with parents	No of Schools	2,777	511	247	10	3,545
	%	99.82	99.03	91.14	71.43	98.94
No. of Schools having Constituted SMC	No of Schools	2,780	510	NA	NA	3,290
	%	99.93	98.84	NA	NA	99.76
No. of Schools having Constituted SMDC	No of Schools	6	537	NA	NA	543
	%	0.22	104.07	NA	NA	16.46
No. of Schools having Constituted SMC & SMDC are same	No of Schools	1	203	NA	NA	204
	%	0.04	39.34	NA	NA	6.19
Avg. total no. of SMC Members in schools	Male	7	8	NA	NA	7
	Female	7	7	NA	NA	7
Avg. no. of representative of parents / Guardians / PTA in SMC	Male	4	4	NA	NA	4
	Female	5	5	NA	NA	5
Avg. no. of representative of local authorities / local government /urban local	Male	1	1	NA	NA	1
	Female	0	1	NA	NA	0
Avg. no. of SMC meetings held in previous year		10	6	NA	NA	8
No.. of Schools having prepared SDP		2,777	479	NA	NA	3,322
No. of Schools having maintained separate SMC bank accounts		2,780	485	NA	NA	3,293
Avg. no. of instructional days of school in previous year	Primary	229	229	219	224	229
	Upper Primary	230	229	226	219	229
	Secondary	233	232	225	234	231
	Higher Secondary	164	223	206	2	198
Avg. of staying childrens hours in schools per day	Primary	6.8	6.7	6.7	7.2	6.8
	Upper Primary	6.8	6.9	6.6	6.7	6.8
	Secondary	6.1	5.9	5.7	6.3	3040.0
	Higher Secondary	4.2	5.5	5.5	2.0	1189.0
Avg. of teachers working hours in school per day	Primary	6.8	6.7	6.7	7.2	6.8
	Upper Primary	6.8	6.8	6.6	6.9	6.8
	Secondary	6.9	6.8	6.6	6.3	3040.0
	Higher Secondary	3.3	6.4	6.4	2.0	1189.0
No of Schools having complete set of free text book received	Primary	2,768	115	14	1	2,898
	Upper Primary	851	228	10	1	1,090
No of Schools having TLE available for each grade	Primary	2,767	132	135	6	3,040
	Upper Primary	851	235	101	2	1,189
No of Schools having playing material, games and sports equipment available for each grade\	Primary	2,664	129	135	5	2,933
	Upper Primary	828	216	101	1	1,146
No. of Schools having any children enrolled in school special training	Schools	36	15	8	0	59
No of Children Enrolled for Special Training in Previous Year	Boys	70	15	29	0	114
	Girls	36	12	8	0	56
No of Children Provided for Special Training in Previous Year	Boys	70	15	29	0	114
	Girls	36	15	8	0	59

## 9. Right To Education (RTE) Information

Subject	Govt. & Local Bodies	Private Aided	Private Un-Aided	Unrecognised	Total	
<b>Elementary Schools All(Classses Having 1 to 8)</b>		<b>2,782</b>	<b>516</b>	<b>271</b>	<b>14</b>	<b>3,583</b>
No of Children Enrolled for Special Training in Current Year	Boys	119	69	33	0	221
	Girls	89	29	13	0	131
No of Children Provided for Special Training in Current Year	Boys	67	56	30	0	153
	Girls	35	22	10	0	67
No. of Childrens completed special training during previous year	School Teachers	44	5	0	0	49
	Specially engaged	29	29	2	2	62
	Both	0	0	0	0	0
	NGO	0	0	0	0	0
	Other	0	0	0	0	0
Special training is conducted in	None	0	0	0	0	0
	School premises	51	10	3	0	64
	Other than School premises	34	1	0	0	35
Type of Training	Both	0	0	0	0	0
	Residential	56	13	1	1	71
	Non Residential	44	3	1	0	48
	Both	1	1	0	0	2

## 10. CWSN with Special Needs (Current Year)

Type of Facility	Elementary			Secondary / Hsecondary		
	Boys	Girls	Total	Boys	Girls	Total
Visual Impairment (Blindness)-TB	92	93	185	35	30	65
Visual Impairment (Low vision) -LV	595	558	1,153	205	249	454
Hearing impairment-HI	383	262	645	70	43	113
Speech impairment-SI	350	216	566	48	27	75
Loco Motor Impairment-OH	537	327	864	195	86	281
Mental Retardation-MR	1,144	755	1,899	104	66	170
Learning disability-LD	888	651	1,539	45	16	61
Cerebral Palsy-CP	26	19	45	6	3	9
Autism-ASD	45	22	67	3	0	3
Multiple disability-MD	276	138	414	15	8	23
<b>Total</b>	<b>4,336</b>	<b>3,041</b>	<b>7,377</b>	<b>726</b>	<b>528</b>	<b>1,254</b>
<b>Grand Total (Class 1 to 12)</b>	<b>5,062</b>	<b>3,569</b>	<b>8,631</b>			

## 11. Facilities provided to CWSN (Previous Year)

Type of Facility	Elementary			Secondary / Hsecondary		
	Boys	Girls	Total	Boys	Girls	Total
Brail Books	35	29	64	6	8	14
Brail Kit	10	5	15	3	3	6
Low vision Kit	24	13	37	3	4	7
Hearing aid	12	8	20	2	2	4
Braces	1	2	3	0	0	0
Crutches	2	1	3	0	0	0
Wheel Chair	63	26	89	4	3	7
Tri-Cycle	10	4	14	0	0	0
Caliper	36	20	56	2	2	4
<b>Total</b>	<b>193</b>	<b>108</b>	<b>301</b>	<b>20</b>	<b>22</b>	<b>42</b>
<b>Grand Total (Class 1 to 12)</b>	<b>213</b>	<b>130</b>	<b>343</b>			



## Educational Development Index

Management	All
<b>Indicator / District Ranks</b>	
<b>Access</b>	
01. Density of Schools per 10 Sq.Km. All	3.42
02. Availability of schools per 1000 child population census	9.66
03. Ratio of primary to Upper Primary Schools/Sections	2.12
<b>Infrastructure</b>	
04. % of Schools with SCR>30	3.76
05. % of Schools with SCR>35	5.85
06. Percentage of Schools with 1:1 Classroom Teacher Ratio	89.62
07. % of Schools with Water facility	100.00
08. % of Schools with Boys Toilet	99.89
09. % of Schools with Girls Toilets	99.92
10. % of Schools with Ramp	94.95
11. % of Schools with Kitchen Shead ( Gov & Aided)	80.46
<b>Teacher</b>	
12. % of schools with female teachers ( in schools with 2 and more teachers)	75.44
13. % of Schools with PTR>30	3.79
14. % of Schools with PTR>35	11.58
15. % of Single Teacher Schools	1.02
16. % without Professional Qualification	0.68
<b>OutComes</b>	
17. Average number of instructional days -Primary	228.57
18. Average number of instructional days -Upper Primary	229.45
19. Average working hours for teachers-Primary	6.79
20. Average working hours for teachers-Upper Primary	6.79
21. % of change in enrollment in Gov schools over the previous year	0.00
22. Gross Enrollment Ratio	95.97
23. Retention Rate	96.26
24. Participation of SC children ((% of SC Population (2001 census)- % of SC Enrollment)	12.53
25. Participation of ST children ((% of ST Population (2001 census)- % of ST Enrollment)	1.68
26. Participation of Muslim children ((% of Muslim Population (2001 census)-% of Muslim Enrollment)	5.64
27. Ratio of Girls Enrollment to Boys Enrollment	0.89
28. DROPOUT RATE	1.14
29. Transition Rate for primary to upper primary	99.66

## Schools ,Enrollment & Teachers (Class 1 to 12 )

Management	Schools	Enrollments	Teachers	Classrooms	PTR	SCR
Department of Education	2	239	13	16	18.4	14.9
Zilla Parishad	2725	148168	8669	8660	17.1	17.1
MNC	0	0	0	0	0.0	0.0
Nagar Palika	52	7419	242	286	30.7	25.9
Local body	0	0	0	0	0.0	0.0
Cantonment Board	0	0	0	0	0.0	0.0
Tribal/Social Welfare Dept.	0	0	0	0	0.0	0.0
Social Welfare	0	0	0	0	0.0	0.0
Tribal Welfare	2	331	13	14	25.5	23.6
Central Govt.	0	0	0	0	0.0	0.0
Central School	0	0	0	0	0.0	0.0
Govt Military School	1	655	29	21	22.6	31.2
Navoday Vodyalay	1	489	25	14	19.6	34.9
Railway School	0	0	0	0	0.0	0.0
<b>Gov &amp; Local Body</b>	<b>2783</b>	<b>157301</b>	<b>8991</b>	<b>9011</b>	<b>17.5</b>	<b>17.5</b>
Social Welfare Aided	44	6637	281	251	23.6	26.4
Tribal Welfare Aided	0	0	0	0	0.0	0.0
Pvt. Aided	616	287924	8572	6304	33.6	45.7
Partially Aided	33	5475	193	164	28.4	33.4
Pvt. Military School	0	0	0	0	0.0	0.0
<b>Private Aided</b>	<b>693</b>	<b>300036</b>	<b>9046</b>	<b>6719</b>	<b>33.2</b>	<b>44.7</b>
Social Welfare Unaided	13	827	71	68	11.6	12.2
Tribal Welfare Unaided	0	0	0	0	0.0	0.0
Unaided	69	10092	419	349	24.1	28.9
Pvt. Unaided	0	0	0	0	0.0	0.0
Permanent Unaided	186	53235	1914	1729	27.8	30.8
Self Finance	67	7100	392	329	18.1	21.6
Vedic/sanskrit/Dharmic School	0	0	0	0	0.0	0.0
Madarsa recognized	14	767	51	0	15.0	0.0
Madarsa unrecognized	0	0	0	70	0.0	0.0
Others	0	0	0	0	0.0	0.0
No Response	0	0	0	0	0.0	0.0
<b>Private Unaided</b>	<b>349</b>	<b>72021</b>	<b>2847</b>	<b>2545</b>	<b>25.3</b>	<b>28.3</b>
<b>Un-Recognised</b>	<b>14</b>	<b>844</b>	<b>60</b>	<b>66</b>	<b>14.1</b>	<b>12.8</b>
<b>Grand Total</b>	<b>3839</b>	<b>530202</b>	<b>20944</b>	<b>18341</b>	<b>25.3</b>	<b>28.9</b>