



District Profile

Based on Unified District Information System for Education (UDISE), 2015-16

District : Thane

1 – Demographic (Source : Census of India,2011)

	Male	Female	Person	Sex Ratio	Child Sex Ratio (0-6 years)
Population	5,879,387	5,174,744	11,054,131		
Literacy rate	90.9	80.8	86.2	880	918

2- Number of Schools by Management and Category (Class 1 to 12)

Indicator (Number of schools)	Govt. and Local bodies	Pvt. Aided	Pvt. Unaided	Un-recognised	Total
Primary (1-4/5)	1,097	144	160	39	1,440
Primary with Upper Primary (1-7/8)	744	342	701	59	1,846
Pri,Upper,Secondary with Hsecondary (1 to 12)	10	1	27	0	38
Only Upper Primary (5/6 to 7/8)	0	0	1	0	1
Upper,Secondary with Hsecondary (5/6 to 12)	0	97	26	1	124
Primary,Upperprimary with Secondary(1 to 10)	11	5	49	6	71
Upperprimary with Secondary(5/6 to 10)	2	139	50	0	191
Secondary Only (8/9 to 10)	44	211	488	12	755
Secondary with HSecondary(8/9 to 12)	0	50	83	0	133
Higher Secondary with college attached (11 to 12)	2	12	76	0	90
Total	1,910	1,001	1,661	117	4,689
Having Primary level classes	1,862	492	937	104	3,395
Having Upper Primary level classes	767	584	854	66	2,271
Having Secondary level classes	67	503	723	19	1,312
Having HigherSecondary level classes	12	160	212	1	385
Ratio of Primary to Upper Primary schools	State average				1.9
	District				1.5

3 - Number of Mediumwise Schools by Management .(Class 1 to 12)

Indicator (Number of Mediumwise schools)	Govt. and Local bodies	Pvt. Aided	Pvt. Unaided	Un-recognised	Total
Marathi	1,701	657	161	14	2,533
English	7	31	1,344	89	1,471
Hindi	47	181	107	9	344
Urdu	118	80	37	5	240
Bangali	0	0	0	0	0
Gujrati	13	24	7	0	44
Kannada	3	6	1	0	10
Sindhi	4	17	2	0	23
Tamil	3	1	0	0	4
Telgu	14	4	2	0	20
Sanskrit	0	0	0	0	0

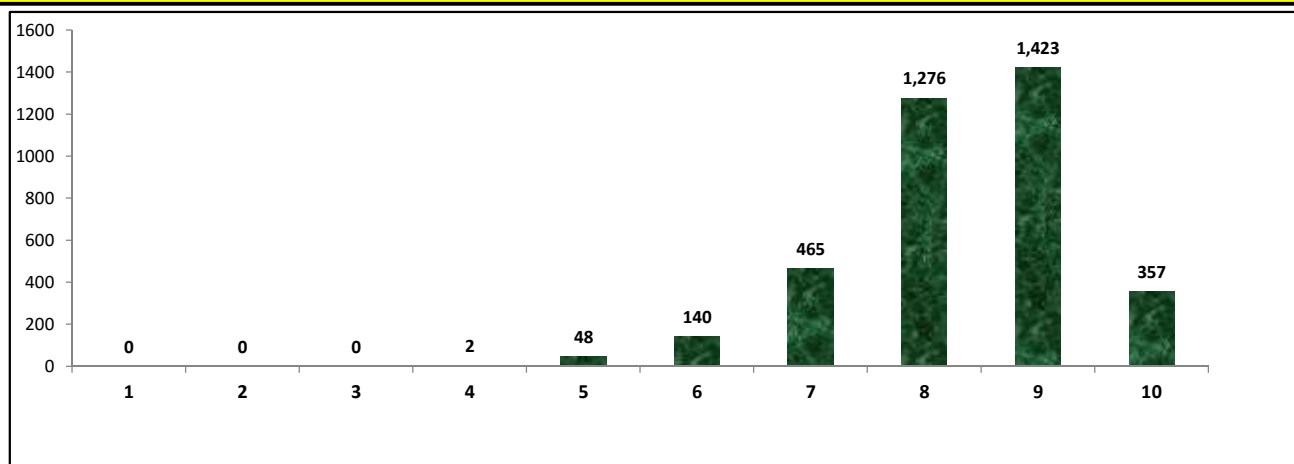
4 – Infrastructure at Elementry Level

Status of Infrastructure Facilities in Schools (Numbers, All schools)



Indicator : Schools with infrastructure facilities available (Sch.All)		Govt. and Local bodies	Pvt. Aided	Pvt. Unaided	Un-recognised	Total
Total Schools		1910	1001	1661	117	4689
1. Building	Number	1,910	1,001	1,661	117	4,689
	%	100.00	100.00	100.00	100.00	100.00
2. Office-cum-store-cum-HM room	Number	999	966	1,588	74	3,627
	%	52.30	96.50	95.61	63.25	77.35
3. One classroom for every teacher	Number	1,565	731	1,299	77	3,672
	%	81.94	73.03	78.21	65.81	78.31
4. Ramp	Number	1,823	740	1,107	79	3,749
	%	95.45	73.93	66.65	67.52	79.95
5. Separate toilet for boys	Number	1,910	1,001	1,661	117	4,689
	%	100.00	100.00	100.00	100.00	100.00
6. Separate toilet for girls	Number	1,910	1,001	1,661	117	4,689
	%	100.00	100.00	100.00	100.00	100.00
7. Drinking water facility	Number	1,910	1,001	1,661	117	4,689
	%	100.00	100.00	100.00	100.00	100.00
8. Kitchen shed (Gov & Aided Schools)	Number	1,004	143	NA	NA	1,147
	%	52.57	14.29	NA	NA	39.40
9. Boundary wall	Number	1,519	458	652	65	2,694
	%	79.53	45.75	39.25	55.56	57.45
10. Playground	Number	1,813	978	1,558	91	4,440
	%	94.92	97.70	93.80	77.78	94.69
Indicators		Govt. and Local bodies	Pvt. Aided	Pvt. Unaided	Un-recognised	Total
Number of classrooms(1 to 8)		7,842	7,293	13,758	905	29,798
Number of classrooms(9 to 10)		242	2,156	2,546	43	4,987
Number of classrooms(11 to 12)		41	1,108	1,261	2	2,412
Student Classroom Ratio (SCR) Primary		31	UpperPri.	40	Elementry	39
Primary schools having SCR more than 30	Number	85	89	98	4	276
	%	7.75	61.81	61.25	10.26	19.17
Upper Primary. schools having SCR more than 35	Number	13	156	49	1	219
	%	1.69	26.71	5.74	1.52	9.64
Schools fulfilling "10" infrastructure norms for building under RTE(Ele.Sch.)	Number	304	51	2	0	357
	%	15.93	5.16	0.13	0.00	7.76

Number of schools by number of infrastructure elements compliance



5- Enrolment (Class 1 to 12)

Number of students enrolled in		Govt. and Local bodies	Pvt. Aided	Pvt. Unaided	Un-recognised	Total
Primary Classes (1-5)	Boys	74,202	85,411	227,496	9,603	396,712
	Girls	79,439	91,452	177,714	8,185	356,790
	Total	153,641	176,863	405,210	17,788	753,502
Upper Primary Classes (6-8)	Boys	31,667	82,594	108,139	2,236	224,636
	Girls	33,569	81,505	79,973	1,915	196,962
	Total	65,236	164,099	188,112	4,151	421,598
Secondary Classes (9-10)	Boys	6,126	64,493	60,130	445	131,194
	Girls	6,487	62,050	45,770	414	114,721
	Total	12,613	126,543	105,900	859	245,915
Higher Secondary Classes (11-12)	Boys	1,091	43,763	41,273	60	86,187
	Girls	545	46,888	33,188	103	80,724
	Total	1,636	90,651	74,461	163	166,911
Elementary Classes (1-8)	Boys	105,869	168,005	335,635	11,839	621,348
	Girls	113,008	172,957	257,687	10,100	553,752
	Total	218,877	340,962	593,322	21,939	1,175,100
All Classes (1-12)	Boys	113,086	276,261	437,038	12,344	838,729
	Girls	120,040	281,895	336,645	10,617	749,197
	Total	233,126	558,156	773,683	22,961	1,587,926

5.1- Castewise Enrolment (Class 1 to 12)

Indicator	Primary	Upper Primary	Secondary	Higher Sec.	Elementary	All
All Social Groups	753,502	421,598	245,915	166,911	1,175,100	1,587,926
General	453,801	245,274	142,276	944,776	699,075	1,786,127
Schedule Castes (SC)	73,248	44,313	26,912	16,852	117,561	161,325
Schedule Tribes (ST)	49,373	28,599	13,153	6,985	77,972	98,110
Other Backward Classes (OBC)	177,080	103,412	63,574	39,649	280,492	383,715
Muslim	133,058	71,090	35,964	18,751	204,148	258,863
Nomadic Tribes (NT)	13,573	7,763	3,964	2,316	21,336	27,616
Vimukat Jatis (VJ)	5,779	3,096	2,315	1,130	8,875	12,320
Special Backward Classes (SBC)	7,243	4,220	2,908	1,758	11,463	16,129
Bouddhist Minority	21,197	12,223	7,630	4,608	33,420	45,658
Parshi Minority	432	282	188	47	714	949
Christan Minority	7,646	5,060	3,389	1,976	12,706	18,071
Sikh Minority	2,024	1,370	840	719	3,394	4,953
Jain Minority	4,733	2,800	1,952	686	7,533	10,171
B. P. L.	10,284	5,132	2,616	996	15,416	19,028
Children with Special Needs (C.W.S.N.)	7,616	4,292	1,797	260	11,908	13,965

5.2- Mediumwise Enrolment (Class 1 to 12)

Indicator (Number of Mediumwise schools)	Govt. and Local bodies	Pvt. Aided	Pvt. Unaided	Un-recognised	Total
Marathi	165,120	344,055	26,977	3,160	539,312
English	5,311	55,285	719,010	17,342	796,948
Hindi	18,762	86,259	18,729	1,182	124,932
Urdu	40,989	61,058	8,076	1,277	111,400
Bangali	0	0	0	0	0
Gujrati	745	5,468	414	0	6,627
Kannada	227	943	47	0	1,217
Sindhi	40	4,522	186	0	4,748
Tamil	404	7	0	0	411
Telgu	1,528	559	244	0	2,331
Sanskrit	0	0	0	0	0
School size (Distribution of schools by Enrolment)	Govt. and Local bodies	Pvt. Aided	Pvt. Unaided	Un-recognised	Total
Less than 10	111	10	14	1	136
11-20	280	5	26	0	311
21-30	280	5	26	0	311
31-60	388	28	123	12	551
61-150	361	130	381	39	911
More than 150	770	828	1,117	65	2,780

6- Gender Gap in Enrolment (in %)

Indicator	Primary	Upper Primary	Secondary	Higher Secondary	Elementry	All
All Social Groups	5.30	6.60	6.70	6.70	5.80	5.70
General	6.90	8.70	8.00	8.00	7.50	7.30
Schedule Castes (SC)	2.80	3.80	5.00	5.00	3.20	3.10
Schedule Tribes (ST)	2.70	5.70	9.30	9.30	3.80	4.90
Other Backward Classes (OBC)	3.20	3.10	4.10	2.90	4.90	4.50
Muslim	2.70	3.30	0.00	0.00	2.90	1.30
Nomadic Tribes (NT)	1.30	7.60	8.80	8.80	3.60	4.50
Vimukat Jatis (VJ)	6.70	12.50	11.60	11.60	8.70	8.60
Special Backward Classes (SBC)	6.10	3.00	2.90	2.90	4.90	4.50
Bouddhist Minority	1.90	3.40	3.60	3.60	2.40	2.80
Parshi Minority	15.30	3.60	11.80	11.80	10.70	11.30
Christan Minority	2.50	1.30	0.80	0.80	2.00	1.60
Sikh Minority	8.60	5.90	11.20	11.20	7.50	5.20
Jain Minority	1.70	4.40	6.80	6.80	2.70	3.90
B. P. L.	2.00	7.10	4.00	4.00	3.70	3.10
Children with Special Needs (C.W.S.N.)	19.10	11.90	12.80	12.80	2.00	16.20
No. of clusters having gender gap > 10 %	24	55	60	49	23	33
No. of Block having gender gap > 10 %	0	0	1	1	0	0

7- Teacher (Class 1 to 12)

Indicators	Govt. and Local bodies	Pvt. Aided	Pvt. Unaided	Un-recognised	Total	
Number of Teachers	Male	3,339	6,712	3,779	14,005	
	Female	4,427	7,066	15,668	27,896	
	Total	7,766	13,778	19,447	910	41,901
Percentage of female teachers to total teachers		57.00	51.28	80.57	80.77	66.58
Schools without a female teacher	Number	483	73	80	7	643
	%	25.29	7.29	4.82	5.98	13.71

7.1- Mediumwise Teacher (Class 1 to 12)

Medium	Govt. and Local bodies	Pvt. Aided	Pvt. Unaided	Un-recognised	Total
Marathi	6,116	8,872	1,015	104	16,107
English	155	1,036	17,498	703	19,392
Hindi	363	2,088	619	59	3,129
Urdu	980	1,321	262	44	2,607
Bangali	0	0	0	0	0
Gujrati	39	259	22	0	320
Kannada	15	35	4	0	54
Sindhi	6	147	13	0	166
Tamil	16	1	0	0	17
Telgu	76	19	14	0	109
Sanskrit	0	0	0	0	0

7.2- Castewise Teacher (Class 1 to 12)

Caste	Govt. and Local bodies	Pvt. Aided	Pvt. Unaided	Un-recognised	Total
All	7,654	13,608	19,407	909	41,578
Genral	2,843	7,292	15,964	659	26,758
SC	881	1,346	864	29	3,120
ST	743	1,056	220	17	2,036
OBC	2,477	3,187	1,877	195	7,736
VJ	297	455	296	5	1,053
OTHER	0	0	0	0	0
SBC	227	139	136	2	504
NT-B	66	36	16	1	119
NT-C	84	64	22	1	171
NT-D	36	33	12	0	81

Indicators		Govt. and Local bodies	Pvt. Aided	Pvt. Unaided	Un-recognised	Total
Schools with single teacher	Number	224	6	7	4	241
	%	11.73	0.60	0.42	3.42	5.14
PTR	Local Body-Only	Primary Section	Upper Primary Section	Secondary Section	Elementry Section	All (Class 1-12)
Pupil Teacher Ratio	30	46	36	25	42	38

Indicators		Govt. and Local bodies	Pvt. Aided	Pvt. Unaided	Un-recognised	Total
Primary schools having PTR more than 30	Number	149	92	95	5	341
	%	13.58	63.89	59.38	12.82	23.68
Upper Primary having PTR more than 35	Number	212	200	224	8	644
	%	27.64	34.25	26.23	12.12	28.36
Trained /Untrained Teacher	Primary Section	Upper Primary Section	Secondary Section	Higher Secondary Section	Elementry Section	All
Teacher All	16,523	11,765	10,028	3,585	28,288	41,901
Trained Teacher Number	16,223	11,632	9,964	3,555	27,855	41,374
%	98.18	98.87	99.36	99.16	98.47	98.74
Untrained Teacher All Number	300	133	64	30	433	527
%	1.82	1.13	0.64	0.84	1.53	1.26

8-Efficiency indicators

8.1 Annual Average Drop-out Rate

Social Groups	Primary			UpperPrimary		
	Boys	Girls	Total	Boys	Girls	Total
All Social Groups	0.00	0.00	0.00	0.00	0.87	0.06
General	0.00	0.00	0.00	0.00	0.00	0.00
Schedule Castes (SC)	0.71	0.00	0.33	0.17	1.18	0.65
Schedule Tribes (ST)	1.43	1.27	1.35	3.64	6.40	4.94
Other Backward Classes (OBC)	0.00	0.32	0.00	0.00	3.18	1.10
Vimukat Jatis (VJ)	0.00	0.00	0.00	0.00	0.00	0.00
Nomadic Tribes (NT)	3.89	9.36	6.62	10.69	1.53	6.66
Special Backward Classes (SBC)	0.00	0.00	0.00	0.00	0.00	0.00
Muslim	0.00	0.00	0.00	0.00	0.00	0.00

8.2 Transition Rate

Social Groups	Primary			UpperPrimary		
	Boys	Girls	Total	Boys	Girls	Total
All Social Groups	99.93	100.33	100.11	104.09	100.64	102.48
General	100.41	101.21	100.78	101.65	101.21	101.45
Schedule Castes (SC)	100.33	100.43	100.38	109.17	104.77	107.10
Schedule Tribes (ST)	96.36	97.45	96.87	100.32	93.87	97.33
Other Backward Classes (OBC)	99.58	99.10	99.34	108.72	108.72	104.10
VJ / NT	99.52	68.46	82.60	96.90	111.10	102.81
Special Backward Classes (SBC)	134.62	124.14	129.34	117.16	130.34	123.17
Muslim	102.11	100.76	101.45	106.21	110.88	108.53

8.3 Gender Parity Index (GPI)

Social Groups	Primary Section	Upper Primary Section	Secondary Section	Higher Secondary	Elementry Section	All (Class 1-12)
All Social Groups	0.90	0.88	0.87	0.94	0.89	0.89
General	0.87	0.84	0.85	0.91	0.86	0.86
Schedule Castes (SC)	0.95	0.93	0.91	0.91	0.94	0.94
Schedule Tribes (ST)	0.95	0.89	0.83	0.83	0.93	0.91
Other Backward Classes (OBC)	0.94	0.94	0.92	1.00	0.94	0.94
Vimukat Jatis (VJ)	0.88	0.78	0.79	0.97	0.84	0.84
Nomadic Tribes (NT)	0.98	0.86	0.84	0.90	0.93	0.92
Special Backward Classes (SBC)	0.89	0.94	0.94	0.92	0.91	0.91
Muslim	0.95	0.94	1.03	1.23	0.94	0.97

8.4 Retention Rate

Social Groups	Primary			UpperPrimary		
	Boys	Girls	Total	Boys	Girls	Total
All Social Groups	87.13	86.44	86.80	94.57	94.57	93.93
General	98.42	97.21	97.86	96.81	96.81	95.82
Schedule Castes (SC)	91.80	92.90	92.33	87.56	87.33	87.45
Schedule Tribes (ST)	57.87	58.25	58.06	54.16	52.77	53.51
Other Backward Classes (OBC)	96.29	97.69	96.97	82.09	81.19	81.66
Muslim	99.03	98.84	86.80	87.73	87.46	93.93

9. Right To Education (RTE) Information

Subject		Govt. & Local Bodies	Private Aided	Private Un-Aided	Unrecognised	Total
Elementary Schools All(Classes Having 1 to 8)		1,864	728	1,014	105	3,711
No of Schools CCE being implemented in school	No of Schools	1,864	725	968	89	3,646
	%	100.00	99.59	95.46	84.76	98.25
No of Schools having maintained pupil cumulative records	No of Schools	1,864	725	968	89	3,646
	%	100.00	99.59	95.46	84.76	98.25
No. of Schools having shared pupil cumulative records with parents	No of Schools	1,864	715	951	76	3,606
	%	100.00	98.21	93.79	72.38	97.17
No. of Schools having Constituted SMC	No of Schools	1,864	658	NA	NA	2,522
	%	100.00	90.38	NA	NA	97.30
No. of Schools having Constituted SMDC	No of Schools	64	269	NA	NA	333
	%	3.43	36.95	NA	NA	12.85
No. of Schools having Constituted SMC & SMDC are same	No of Schools	10	102	NA	NA	112
	%	0.54	14.01	NA	NA	4.32
Avg. total no. of SMC Members in schools	Male	6	5	NA	NA	5
	Female	7	7	NA	NA	5
Avg. no. of representative of parents / Guardians / PTA in SMC	Male	4	3	NA	NA	3
	Female	6	5	NA	NA	4
Avg. no. of representative of local authorities / local government /urban local	Male	1	1	NA	NA	1
	Female	1	1	NA	NA	1
Avg. no. of SMC meetings held in previous year		7	4	NA	NA	4
No.. of Schools having prepared SDP		1,851	529	NA	NA	2,539
No. of Schools having maintained separate SMC bank accounts		1,847	487	NA	NA	2,415
Avg. no. of instructional days of school in previous year	Primary	217	221	220	217	218
	Upper Primary	221	221	222	222	221
	Secondary	224	225	223	222	224
	Higher Secondary	227	224	223	221	224
Avg. of staying childrens hours in schools per day	Primary	6.4	6.5	6.4	6.4	6.4
	Upper Primary	6.5	6.5	6.4	6.4	6.4
	Secondary	5.5	5.3	5.4	5.4	2656.0
	Higher Secondary	5.5	5.4	5.4	5.0	1372.0
Avg. of teachers working hours in school per day	Primary	6.4	6.5	6.4	6.4	6.4
	Upper Primary	6.5	6.5	6.4	6.4	6.4
	Secondary	6.2	6.0	6.2	6.1	2656.0
	Higher Secondary	6.2	6.0	6.2	5.0	1372.0
No of Schools having complete set of free text book received	Primary	1,838	430	103	18	2,389
	Upper Primary	747	319	88	11	1,165
No of Schools having TLE available for each grade	Primary	1,811	458	362	25	2,656
	Upper Primary	721	341	296	14	1,372
No of Schools having playing material, games and sports equipment available for each grade\	Primary	1,507	448	385	27	2,367
	Upper Primary	587	333	318	16	1,254
No. of Schools having any children enrolled in school special training	Schools	678	367	33	0	1,078
No of Children Enrolled for Special Training in Previous Year	Boys	1,331	367	55	0	1,753
	Girls	678	145	33	0	856
No of Children Provided for Special Training in Previous Year	Boys	1,331	367	55	0	1,753
	Girls	678	367	33	0	1,078

9. Right To Education (RTE) Information

Subject		Govt. & Local Bodies	Private Aided	Private Un-Aided	Unrecognised	Total
Elementary Schools All(Classses Having 1 to 8)		1,864	728	1,014	105	3,711
No of Children Enrolled for Special Training in Current Year	Boys	1,850	589	485	3	2,927
	Girls	992	263	16	0	1,271
No of Children Provided for Special Training in Current Year	Boys	2,197	555	99	0	2,851
	Girls	1,198	212	41	0	1,451
No. of Childrens completed special training during previous year	School Teachers	124	32	5	1	162
	Specially engaged	16	16	0	0	32
	Both	1	0	0	0	1
	NGO	1	1	1	0	3
	Other	2	1	1	1	5
Special training is conducted in	None	0	0	0	0	0
	School premises	338	94	26	1	459
	Other than School premises	98	26	8	1	133
	Both	9	1	2	0	12
Type of Training	Residential	235	47	26	0	308
	Non Residential	282	62	26	1	371
	Both	13	2	2	0	17

10. CWSN with Special Needs (Current Year)

Type of Facility	Elementary			Secondary / Hsecondary		
	Boys	Girls	Total	Boys	Girls	Total
Visual Impairment (Blindness)-TB	167	141	308	44	46	90
Visual Impairment (Low vision) -LV	1,535	1,479	3,014	393	439	832
Hearing impairment-HI	905	705	1,610	108	93	201
Speech impairment-SI	497	278	775	55	39	94
Loco Motor Impairment-OH	816	536	1,352	177	99	276
Mental Retardation-MR	1,439	950	2,389	48	17	65
Learning disability-LD	1,083	561	1,644	302	127	429
Cerebral Palsy-CP	82	52	134	17	10	27
Autism-ASD	157	47	204	14	2	16
Multiple disability-MD	320	158	478	23	4	27
Total	7,001	4,907	11,908	1,181	876	2,057
Grand Total (Class 1 to 12)	8,182	5,783	13,965			

11. Facilities provided to CWSN (Previous Year)

Type of Facility	Elementary			Secondary / Hsecondary		
	Boys	Girls	Total	Boys	Girls	Total
Brail Books	10	5	15	1	0	1
Brail Kit	5	5	10	0	0	0
Low vision Kit	13	33	46	0	0	0
Hearing aid	14	9	23	1	1	2
Braces	0	1	1	0	0	0
Crutches	4	2	6	0	0	0
Wheel Chair	48	25	73	6	1	7
Tri-Cycle	8	5	13	0	1	1
Caliper	31	17	48	4	1	5
Total	133	102	235	12	4	16
Grand Total (Class 1 to 12)	145	106	251			

Educational Development Index

Management	All
Indicator / District Ranks	
Access	
01. Density of Schools per 10 Sq.Km. All	8.81
02. Availability of schools per 1000 child population census	2.40
03. Ratio of primary to Upper Primary Schools/Sections	1.49
Infrastructure	
04. % of Schools with SCR>30	8.13
05. % of Schools with SCR>35	9.64
06. Percentage of Schools with 1:1 Classroom Teacher Ratio	72.59
07. % of Schools with Water facility	100.00
08. % of Schools with Boys Toilet	100.00
09. % of Schools with Girls Toilets	100.00
10. % of Schools with Ramp	83.27
11. % of Schools with Kitchen Shead (Gov & Aided)	29.78
Teacher	
12. % of schools with female teachers (in schools with 2 and more teachers)	86.29
13. % of Schools with PTR>30	10.04
14. % of Schools with PTR>35	28.36
15. % of Single Teacher Schools	5.14
16. % without Professional Qualification	1.53
OutComes	
17. Average number of instructional days -Primary	217.98
18. Average number of instructional days -Upper Primary	221.41
19. Average working hours for teachers-Primary	6.37
20. Average working hours for teachers-Upper Primary	6.44
21. % of change in enrollment in Gov schools over the previous year	0.00
22. Gross Enrollment Ratio	114.61
23. Retention Rate	86.80
24. Participation of SC children ((% of SC Population (2001 census)- % of SC Enrollment)	10.00
25. Participation of ST children ((% of ST Population (2001 census)- % of ST Enrollment)	6.64
26. Participation of Muslim children ((% of Muslim Population (2001 census)-% of Muslim Enrollment)	17.37
27. Ratio of Girls Enrollment to Boys Enrollment	0.89
28. DROPOUT RATE	0.00
29. Transition Rate for primary to upper primary	100.11

Schools ,Enrollment & Teachers (Class 1 to 12)

Management	Schools	Enrollments	Teachers	Classrooms	PTR	SCR
Department of Education	3	404	12	15	33.7	26.9
Zilla Parishad	1377	85845	3766	4465	22.8	19.2
MNC	466	129166	3411	3155	37.9	40.9
Nagar Palika	37	4222	179	182	23.6	23.2
Local body	0	0	0	0	0.0	0.0
Cantonment Board	0	0	0	0	0.0	0.0
Tribal/Social Welfare Dept.	0	0	0	0	0.0	0.0
Social Welfare	0	0	0	0	0.0	0.0
Tribal Welfare	23	8788	241	216	36.5	40.7
Central Govt.	3	3488	128	67	27.3	52.1
Central School	0	0	0	0	0.0	0.0
Govt Military School	0	0	0	0	0.0	0.0
Navoday Vodyalay	0	0	0	0	0.0	0.0
Railway School	1	1213	29	25	41.8	48.5
Gov & Local Body	1910	233126	7766	8125	30.0	28.7
Social Welfare Aided	22	1957	184	182	10.6	10.8
Tribal Welfare Aided	23	6652	173	159	38.5	41.8
Pvt. Aided	841	512347	12518	9432	40.9	54.3
Partially Aided	114	36773	879	776	41.8	47.4
Pvt. Military School	1	427	24	8	17.8	53.4
Private Aided	1001	558156	13778	10557	40.5	52.9
Social Welfare Unaided	12	631	83	94	7.6	6.7
Tribal Welfare Unaided	0	0	0	0	0.0	0.0
Unaided	473	146284	3758	3787	38.9	38.6
Pvt. Unaided	0	0	0	0	0.0	0.0
Permanent Unaided	1108	613930	15096	13217	40.7	46.5
Self Finance	68	12838	510	467	25.2	27.5
Vedic/sanskrit/Dharmic School	0	0	0	0	0.0	0.0
Madarsa recognized	0	0	0	0	0.0	0.0
Madarsa unrecognized	0	0	0	0	0.0	0.0
Others	0	0	0	0	0.0	0.0
No Response	0	0	0	0	0.0	0.0
Private Unaided	1661	773683	19447	17565	39.8	44.0
Un-Recognised	117	22961	910	950	25.2	24.2
Grand Total	4689	1587926	41901	37197	37.9	42.7