



District Profile

Based on Unified District Information System for Education (UDISE), 2015-16

District : Bhandara

1 – Demographic (Source : Census of India,2011)

	Male	Female	Person	Sex Ratio	Child Sex Ratio (0-6 years)
Population	604,371	594,439	1,198,810		
Literacy rate	93.2	77.0	127.8	984	939

2- Number of Schools by Management and Category (Class 1 to 12)

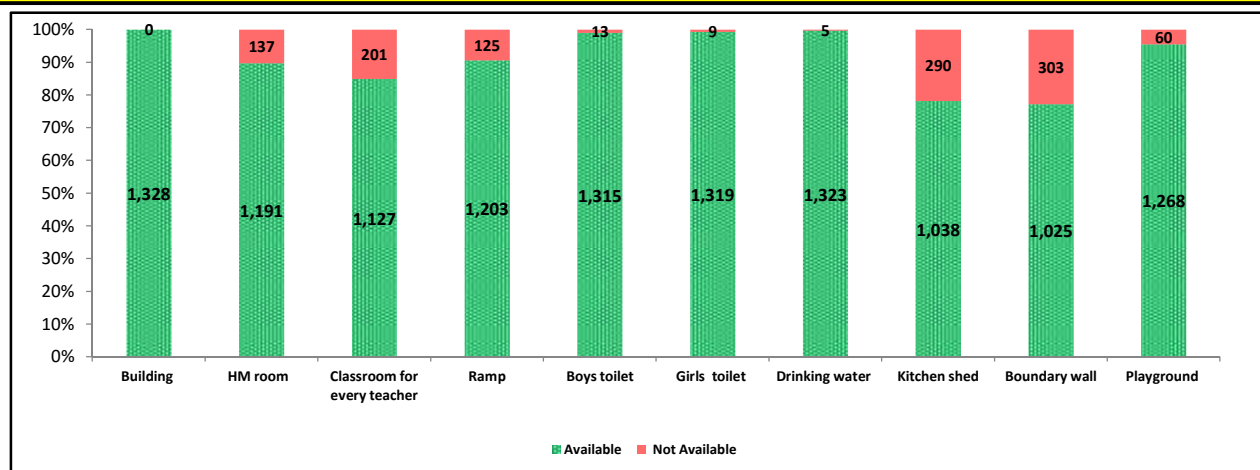
Indicator (Number of schools)	Govt. and Local bodies	Pvt. Aided	Pvt. Unaided	Un-recognised	Total
Primary (1-4/5)	532	66	46	2	646
Primary with Upper Primary (1-7/8)	255	47	37	6	345
Pri,Upper,Secondary with Hsecondary (1 to 12)	1	3	10	0	14
Only Upper Primary (5/6 to 7/8)	0	0	0	0	0
Upper,Secondary with Hsecondary (5/6 to 12)	25	63	0	0	88
Primary,Upperprimary with Secondary(1 to 10)	2	3	16	0	21
Upperprimary with Secondary(5/6 to 10)	12	93	6	1	112
Secondary Only (8/9 to 10)	1	36	10	0	47
Secondary with HSecondary(8/9 to 12)	1	18	2	0	21
Higher Secondary with college attached (11 to 12)	1	13	20	0	34
Total	830	342	147	9	1,328
Having Primary level classes	790	119	109	8	1,026
Having Upper Primary level classes	295	209	69	7	580
Having Secondary level classes	42	216	44	1	303
Having HigherSecondary level classes	28	97	32	0	157
Ratio of Primary to Upper Primary schools	State average				1.9
	District				1.8

3 - Number of Mediumwise Schools by Management .(Class 1 to 12)

Indicator (Number of Mediumwise schools)	Govt. and Local bodies	Pvt. Aided	Pvt. Unaided	Un-recognised	Total
Marathi	822	332	58	1	1,213
English	1	1	87	8	97
Hindi	3	8	2	0	13
Urdu	4	1	0	0	5
Bangali	0	0	0	0	0
Gujrati	0	0	0	0	0
Kannada	0	0	0	0	0
Sindhi	0	0	0	0	0
Tamil	0	0	0	0	0
Telgu	0	0	0	0	0
Sanskrit	0	0	0	0	0

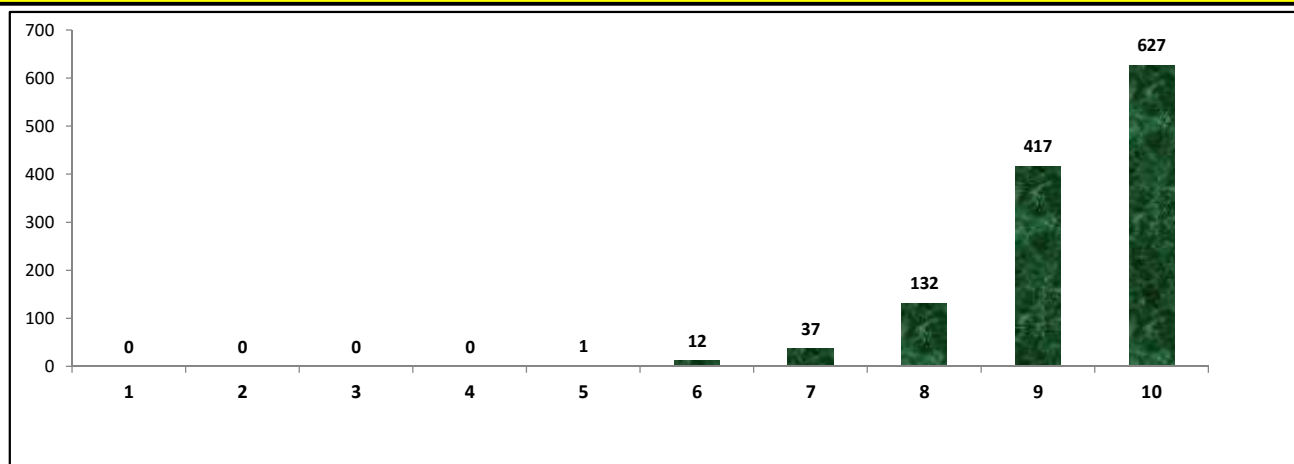
4 – Infrastructure at Elementry Level

Status of Infrastructure Facilities in Schools (Numbers, All schools)



Indicator : Schools with infrastructure facilities available (Sch.All)		Govt. and Local bodies	Pvt. Aided	Pvt. Unaided	Un-recognised	Total
Total Schools		830	342	147	9	1328
1. Building	Number	830	342	147	9	1,328
	%	100.00	100.00	100.00	100.00	100.00
2. Office-cum-store-cum-HM room	Number	706	332	144	9	1,191
	%	85.06	97.08	97.96	100.00	89.68
3. One classroom for every teacher	Number	692	316	111	8	1,127
	%	83.37	92.40	75.51	88.89	84.86
4. Ramp	Number	813	293	95	2	1,203
	%	97.95	85.67	64.63	22.22	90.59
5. Separate toilet for boys	Number	820	341	145	9	1,315
	%	98.80	99.71	98.64	100.00	99.02
6. Separate toilet for girls	Number	823	341	146	9	1,319
	%	99.16	99.71	99.32	100.00	99.32
7. Drinking water facility	Number	825	342	147	9	1,323
	%	99.40	100.00	100.00	100.00	99.62
8. Kitchen shed (Gov & Aided Schools)	Number	781	257	NA	NA	1,038
	%	94.10	75.15	NA	NA	88.57
9. Boundary wall	Number	689	249	79	8	1,025
	%	83.01	72.81	53.74	88.89	77.18
10. Playground	Number	780	339	141	8	1,268
	%	93.98	99.12	95.92	88.89	95.48
Indicators		Govt. and Local bodies	Pvt. Aided	Pvt. Unaided	Un-recognised	Total
Number of classrooms(1 to 8)		3,189	1,831	943	60	6,023
Number of classrooms(9 to 10)		122	764	108	2	996
Number of classrooms(11 to 12)		97	412	102	0	611
Student Classroom Ratio (SCR) Primary		18	UpperPri.	23	Elementry	25
Primary schools having SCR more than 30	Number	44	14	5	0	63
	%	8.27	21.21	10.87	0.00	9.75
Upper Primary. schools having SCR more than 35	Number	12	25	0	0	37
	%	4.07	11.96	0.00	0.00	6.38
Schools fulfilling "10" infrastructure norms for building under RTE(Ele.Sch.)	Number	458	167	2	0	627
	%	55.25	50.76	1.57	0.00	48.45

Number of schools by number of infrastructure elements compliance



5- Enrolment (Class 1 to 12)

Number of students enrolled in		Govt. and Local bodies	Pvt. Aided	Pvt. Unaided	Un-recognised	Total
Primary Classes (1-5)	Boys	26,020	11,117	8,822	345	46,304
	Girls	25,774	10,260	7,245	304	43,583
	Total	51,794	21,377	16,067	649	89,887
Upper Primary Classes (6-8)	Boys	9,319	17,681	3,235	33	30,268
	Girls	8,724	16,872	2,576	39	28,211
	Total	18,043	34,553	5,811	72	58,479
Secondary Classes (9-10)	Boys	3,131	16,788	2,064	22	22,005
	Girls	2,837	16,536	1,498	15	20,886
	Total	5,968	33,324	3,562	37	42,891
Higher Secondary Classes (11-12)	Boys	3,316	12,065	2,109	0	17,490
	Girls	4,030	13,270	1,472	0	18,772
	Total	7,346	25,335	3,581	0	36,262
Elementary Classes (1-8)	Boys	35,339	28,798	12,057	378	76,572
	Girls	34,498	27,132	9,821	343	71,794
	Total	69,837	55,930	21,878	721	148,366
All Classes (1-12)	Boys	41,786	57,651	16,230	400	116,067
	Girls	41,365	56,938	12,791	358	111,452
	Total	83,151	114,589	29,021	758	227,519

5.1- Castewise Enrolment (Class 1 to 12)

Indicator	Primary	Upper Primary	Secondary	Higher Sec.	Elementary	All
All Social Groups	89,887	58,479	42,891	36,262	148,366	227,519
General	3,054	2,179	1,498	7,821	5,233	14,552
Schedule Castes (SC)	13,611	9,182	7,203	6,556	22,793	36,552
Schedule Tribes (ST)	6,872	4,422	3,064	2,176	11,294	16,534
Other Backward Classes (OBC)	66,350	42,696	31,126	26,440	109,046	166,612
Muslim	1,877	1,183	722	492	3,060	4,274
Nomadic Tribes (NT)	9,516	6,488	4,575	3,027	16,004	23,606
Vimukat Jatis (VJ)	616	199	129	183	815	1,127
Special Backward Classes (SBC)	4,645	2,953	2,267	1,655	7,598	11,520
Bouddhist Minority	397	136	63	20	533	616
Parshi Minority	10	0	0	0	10	10
Christan Minority	59	19	30	13	78	121
Sikh Minority	42	12	11	4	54	69
Jain Minority	34	9	14	3	43	60
B. P. L.	28,053	15,820	9,590	6,522	43,873	59,985
Children with Special Needs (C.W.S.N.)	2,704	2,136	1,399	370	4,840	6,609

5.2- Mediumwise Enrolment (Class 1 to 12)

Indicator (Number of Mediumwise schools)	Govt. and Local bodies	Pvt. Aided	Pvt. Unaided	Un-recognised	Total
Marathi	81,692	111,824	5,716	61	199,293
English	1,003	343	23,122	697	25,165
Hindi	81	2,390	183	0	2,654
Urdu	375	32	0	0	407
Bangali	0	0	0	0	0
Gujrati	0	0	0	0	0
Kannada	0	0	0	0	0
Sindhi	0	0	0	0	0
Tamil	0	0	0	0	0
Telgu	0	0	0	0	0
Sanskrit	0	0	0	0	0
School size (Distribution of schools by Enrolment)	Govt. and Local bodies	Pvt. Aided	Pvt. Unaided	Un-recognised	Total
Less than 10	29	3	0	1	33
11-20	122	5	11	0	138
21-30	122	5	11	0	138
31-60	210	27	28	1	266
61-150	221	87	54	6	368
More than 150	248	220	54	1	523

6- Gender Gap in Enrolment (in %)

Indicator	Primary	Upper Primary	Secondary	Higher Secondary	Elementry	All
All Social Groups	3.10	3.60	2.70	2.70	3.30	2.10
General	2.30	3.40	4.20	4.20	2.80	1.90
Schedule Castes (SC)	1.90	2.50	3.80	3.80	2.10	2.00
Schedule Tribes (ST)	3.90	7.10	4.60	4.60	5.10	4.40
Other Backward Classes (OBC)	3.30	3.40	2.10	2.20	1.90	0.60
Muslim	8.70	4.20	1.20	1.20	7.00	3.80
Nomadic Tribes (NT)	1.90	1.50	0.00	0.00	1.80	0.00
Vimukat Jatis (VJ)	6.50	6.60	19.40	19.40	6.60	10.40
Special Backward Classes (SBC)	0.00	6.40	2.20	2.20	1.90	0.60
Bouddhist Minority	7.90	17.70	14.30	14.30	10.40	12.40
Parshi Minority	0.00	-2146826281.00	-2146826281.00	-2146826281.00	0.00	0.00
Christan Minority	5.10	0.00	0.00	0.00	2.60	0.00
Sikh Minority	4.80	0.00	9.10	9.10	0.00	4.40
Jain Minority	17.70	0.00	0.00	0.00	11.70	3.40
B. P. L.	4.80	1.40	0.00	0.00	3.60	1.10
Children with Special Needs (C.W.S.N.)	15.40	8.70	0.00	0.00	2.60	7.10
No. of clusters having gender gap > 10 %	0	5	9	10	1	2
No. of Block having gender gap > 10 %	0	0	0	0	0	0

7- Teacher (Class 1 to 12)

Indicators	Govt. and Local bodies	Pvt. Aided	Pvt. Unaided	Un-recognised	Total	
Number of Teachers	Male	2,242	2,708	380	9	5,339
	Female	1,185	1,057	916	42	3,200
	Total	3,427	3,765	1,296	51	8,539
Percentage of female teachers to total teachers	34.58	28.07	70.68	82.35	37.48	
Schools without a female teacher	Number	299	56	4	0	359
	%	36.02	16.37	2.72	0.00	27.03

7.1- Mediumwise Teacher (Class 1 to 12)

Medium	Govt. and Local bodies	Pvt. Aided	Pvt. Unaided	Un-recognised	Total
Marathi	3,370	3,668	336	4	7,378
English	29	8	952	47	1,036
Hindi	8	85	8	0	101
Urdu	20	4	0	0	24
Bangali	0	0	0	0	0
Gujrati	0	0	0	0	0
Kannada	0	0	0	0	0
Sindhi	0	0	0	0	0
Tamil	0	0	0	0	0
Telgu	0	0	0	0	0
Sanskrit	0	0	0	0	0

7.2- Castewise Teacher (Class 1 to 12)

Caste	Govt. and Local bodies	Pvt. Aided	Pvt. Unaided	Un-recognised	Total
All	3,427	3,765	1,296	51	8,539
Genral	135	237	260	10	642
SC	633	747	241	9	1,630
ST	230	201	54	9	494
OBC	1,990	2,238	678	23	4,929
VJ	83	98	19	0	200
OTHER	0	0	0	0	0
SBC	97	61	20	0	178
NT-B	135	159	18	0	312
NT-C	81	17	6	0	104
NT-D	43	7	0	0	50

Indicators		Govt. and Local bodies	Pvt. Aided	Pvt. Unaided	Un-recognised	Total
Schools with single teacher	Number	9	4	0	0	13
	%	1.08	1.17	0.00	0.00	0.98
PTR	Local Body-Only	Primary Section	Upper Primary Section	Secondary Section	Elementry Section	All (Class 1-12)
Pupil Teacher Ratio	24	26	24	24	25	27

Indicators		Govt. and Local bodies	Pvt. Aided	Pvt. Unaided	Un-recognised	Total
Primary schools having PTR more than 30	Number	25	21	7	1	54
	%	4.70	31.82	15.22	50.00	8.36
Upper Primary having PTR more than 35	Number	40	21	8	0	69
	%	13.56	10.05	11.59	0.00	11.90
Trained /Untrained Teacher	Primary Section	Upper Primary Section	Secondary Section	Higher Secondary Section	Elementry Section	All
Teacher All	3,500	2,388	1,823	828	5,888	8,539
Trained Teacher Number	3,491	2,384	1,820	821	5,875	8,516
%	99.74	99.83	99.84	99.15	99.78	99.73
Untrained Teacher All Number	9	4	3	7	13	23
%	0.26	0.17	0.16	0.85	0.22	0.27

8-Efficiency indicators

8.1 Annual Average Drop-out Rate

Social Groups	Primary			UpperPrimary		
	Boys	Girls	Total	Boys	Girls	Total
All Social Groups	1.03	1.01	1.02	0.00	0.34	0.10
General	5.08	4.26	4.68	0.00	0.00	0.00
Schedule Castes (SC)	1.00	1.02	1.01	0.30	1.06	0.67
Schedule Tribes (ST)	2.19	2.74	2.45	2.70	1.69	2.23
Other Backward Classes (OBC)	0.71	0.67	0.69	0.00	0.29	0.01
Vimukat Jatis (VJ)	21.21	21.79	21.49	17.39	25.23	20.88
Nomadic Tribes (NT)	0.00	0.00	0.00	0.00	0.00	0.00
Special Backward Classes (SBC)	0.00	0.00	0.00	0.00	1.45	0.47
Muslim	1.93	7.04	4.49	0.00	0.00	0.00

8.2 Transition Rate

Social Groups	Primary			UpperPrimary		
	Boys	Girls	Total	Boys	Girls	Total
All Social Groups	99.94	99.72	99.83	101.46	100.25	100.87
General	105.83	102.26	104.02	111.20	109.63	110.44
Schedule Castes (SC)	99.66	99.59	99.62	101.04	99.63	100.36
Schedule Tribes (ST)	102.18	98.19	100.35	96.90	98.02	97.42
Other Backward Classes (OBC)	99.46	99.76	99.61	101.57	101.57	100.87
VJ / NT	98.65	104.62	101.57	101.12	104.51	102.81
Special Backward Classes (SBC)	102.23	99.78	100.99	101.81	100.00	100.89
Muslim	91.43	98.45	94.80	116.15	104.30	109.80

8.3 Gender Parity Index (GPI)

Social Groups	Primary Section	Upper Primary Section	Secondary Section	Higher Secondary	Elementry Section	All (Class 1-12)
All Social Groups	0.94	0.93	0.95	1.07	0.94	0.96
General	0.96	0.94	0.92	1.12	0.95	0.96
Schedule Castes (SC)	0.96	0.95	0.93	0.93	0.96	0.96
Schedule Tribes (ST)	0.93	0.87	0.91	0.99	0.90	0.92
Other Backward Classes (OBC)	0.94	0.93	0.96	1.09	0.94	0.96
Vimukat Jatis (VJ)	0.88	0.88	0.68	0.65	0.88	0.81
Nomadic Tribes (NT)	0.96	0.97	1.10	1.20	0.97	1.02
Special Backward Classes (SBC)	1.02	0.88	0.96	1.16	0.96	0.99
Muslim	0.84	0.92	0.98	1.28	0.87	0.93

8.4 Retention Rate

Social Groups	Primary			UpperPrimary		
	Boys	Girls	Total	Boys	Girls	Total
All Social Groups	95.68	95.26	95.48	99.34	99.34	99.35
General	82.76	83.70	83.20	100.00	100.00	100.00
Schedule Castes (SC)	95.79	92.15	94.01	97.25	99.11	98.14
Schedule Tribes (ST)	85.49	80.40	83.19	96.85	95.67	96.29
Other Backward Classes (OBC)	97.73	98.31	98.01	99.53	98.95	99.25
Muslim	81.74	74.44	95.48	100.00	93.55	99.35

9. Right To Education (RTE) Information

Subject		Govt. & Local Bodies	Private Aided	Private Un-Aided	Unrecognised	Total
Elementary Schools All(Classes Having 1 to 8)		827	275	115	9	1,226
No of Schools CCE being implemented in school	No of Schools	826	270	114	9	1,219
	%	99.88	98.18	99.13	100.00	99.43
No of Schools having maintained pupil cumulative records	No of Schools	826	270	114	9	1,219
	%	99.88	98.18	99.13	100.00	99.43
No. of Schools having shared pupil cumulative records with parents	No of Schools	826	272	112	8	1,218
	%	99.88	98.91	97.39	88.89	99.35
No. of Schools having Constituted SMC	No of Schools	826	273	NA	NA	1,099
	%	99.88	99.27	NA	NA	99.73
No. of Schools having Constituted SMDC	No of Schools	40	222	NA	NA	262
	%	4.84	80.73	NA	NA	23.77
No. of Schools having Constituted SMC & SMDC are same	No of Schools	12	84	NA	NA	96
	%	1.45	30.55	NA	NA	8.71
Avg. total no. of SMC Members in schools	Male	7	8	NA	NA	7
	Female	6	6	NA	NA	6
Avg. no. of representative of parents / Guardians / PTA in SMC	Male	5	5	NA	NA	4
	Female	5	4	NA	NA	4
Avg. no. of representative of local authorities / local government /urban local	Male	1	1	NA	NA	1
	Female	1	1	NA	NA	1
Avg. no. of SMC meetings held in previous year		9	5	NA	NA	7
No.. of Schools having prepared SDP		825	254	NA	NA	1,133
No. of Schools having maintained separate SMC bank accounts		824	257	NA	NA	1,112
Avg. no. of instructional days of school in previous year	Primary	224	224	222	225	224
	Upper Primary	226	224	224	224	225
	Secondary	227	229	227	223	227
	Higher Secondary	228	229	227	2	228
Avg. of staying childrens hours in schools per day	Primary	7.8	7.6	7.5	7.2	7.7
	Upper Primary	7.8	7.7	7.6	7.2	7.7
	Secondary	6.0	6.1	6.0	6.0	941.0
	Higher Secondary	6.0	6.0	6.0	2.0	421.0
Avg. of teachers working hours in school per day	Primary	7.8	7.6	7.5	7.2	7.7
	Upper Primary	7.8	7.9	7.7	7.4	7.8
	Secondary	7.6	7.6	7.4	7.0	941.0
	Higher Secondary	7.7	7.5	7.5	2.0	421.0
No of Schools having complete set of free text book received	Primary	788	110	9	2	909
	Upper Primary	274	130	5	2	411
No of Schools having TLE available for each grade	Primary	765	112	61	3	941
	Upper Primary	265	118	36	2	421
No of Schools having playing material, games and sports equipment available for each grade\	Primary	440	92	61	3	596
	Upper Primary	165	100	35	2	302
No. of Schools having any children enrolled in school special training	Schools	10	53	0	0	63
No of Children Enrolled for Special Training in Previous Year	Boys	23	53	115	0	191
	Girls	10	0	0	0	10
No of Children Provided for Special Training in Previous Year	Boys	23	53	115	0	191
	Girls	10	53	0	0	63

9. Right To Education (RTE) Information

Subject		Govt. & Local Bodies	Private Aided	Private Un-Aided	Unrecognised	Total
Elementary Schools All (Classes Having 1 to 8)		827	275	115	9	1,226
No of Children Enrolled for Special Training in Current Year	Boys	30	87	193	0	310
	Girls	23	0	109	0	132
No of Children Provided for Special Training in Current Year	Boys	32	97	117	0	246
	Girls	9	1	0	0	10
No. of Childrens completed special training during previous year	School Teachers	10	5	1	0	16
	Specially engaged	0	0	0	0	0
	Both	0	0	0	0	0
	NGO	0	0	0	0	0
	Other	0	1	1	0	2
Special training is conducted in	None	0	0	0	0	0
	School premises	19	12	4	0	35
	Other than School premises	13	3	0	0	16
Type of Training	Both	2	0	2	0	4
	Residential	12	7	4	0	23
	Non Residential	10	4	4	0	18
	Both	0	0	0	0	0

10. CWSN with Special Needs (Current Year)

Type of Facility	Elementary			Secondary / Hsecondary		
	Boys	Girls	Total	Boys	Girls	Total
Visual Impairment (Blindness)-TB	48	36	84	28	26	54
Visual Impairment (Low vision) -LV	503	608	1,111	327	586	913
Hearing impairment-HI	181	157	338	55	43	98
Speech impairment-SI	265	118	383	37	28	65
Loco Motor Impairment-OH	279	181	460	122	84	206
Mental Retardation-MR	675	492	1,167	140	96	236
Learning disability-LD	595	425	1,020	98	77	175
Cerebral Palsy-CP	53	44	97	6	3	9
Autism-ASD	25	16	41	5	1	6
Multiple disability-MD	93	46	139	4	3	7
Total	2,717	2,123	4,840	822	947	1,769
Grand Total (Class 1 to 12)	3,539	3,070	6,609			

11. Facilities provided to CWSN (Previous Year)

Type of Facility	Elementary			Secondary / Hsecondary		
	Boys	Girls	Total	Boys	Girls	Total
Brail Books	9	6	15	5	1	6
Brail Kit	5	11	16	7	2	9
Low vision Kit	16	18	34	24	45	69
Hearing aid	6	15	21	5	3	8
Braces	0	1	1	2	0	2
Crutches	1	0	1	0	1	1
Wheel Chair	17	7	24	0	3	3
Tri-Cycle	5	5	10	2	0	2
Caliper	10	6	16	2	1	3
Total	69	69	138	47	56	103
Grand Total (Class 1 to 12)	116	125	241			

Educational Development Index

Management	All
Indicator / District Ranks	
Access	
01. Density of Schools per 10 Sq.Km. All	3.00
02. Availability of schools per 1000 child population census	8.33
03. Ratio of primary to Upper Primary Schools/Sections	1.77
Infrastructure	
04. % of Schools with SCR>30	6.14
05. % of Schools with SCR>35	6.38
06. Percentage of Schools with 1:1 Classroom Teacher Ratio	83.61
07. % of Schools with Water facility	99.59
08. % of Schools with Boys Toilet	98.94
09. % of Schools with Girls Toilets	99.27
10. % of Schools with Ramp	92.09
11. % of Schools with Kitchen Shead (Gov & Aided)	81.57
Teacher	
12. % of schools with female teachers (in schools with 2 and more teachers)	72.97
13. % of Schools with PTR>30	5.26
14. % of Schools with PTR>35	11.90
15. % of Single Teacher Schools	0.98
16. % without Professional Qualification	0.22
OutComes	
17. Average number of instructional days -Primary	223.52
18. Average number of instructional days -Upper Primary	225.12
19. Average working hours for teachers-Primary	7.75
20. Average working hours for teachers-Upper Primary	7.79
21. % of change in enrollment in Gov schools over the previous year	0.00
22. Gross Enrollment Ratio	100.66
23. Retention Rate	95.48
24. Participation of SC children ((% of SC Population (2001 census)- % of SC Enrollment)	15.36
25. Participation of ST children ((% of ST Population (2001 census)- % of ST Enrollment)	7.61
26. Participation of Muslim children ((% of Muslim Population (2001 census)-% of Muslim Enrollment)	2.06
27. Ratio of Girls Enrollment to Boys Enrollment	0.94
28. DROPOUT RATE	1.02
29. Transition Rate for primary to upper primary	99.83

Schools ,Enrollment & Teachers (Class 1 to 12)

Management	Schools	Enrollments	Teachers	Classrooms	PTR	SCR
Department of Education	1	94	3	6	31.3	15.7
Zilla Parishad	798	77287	3208	3179	24.1	24.3
MNC	0	0	0	0	0.0	0.0
Nagar Palika	26	4377	159	170	27.5	25.7
Local body	0	0	0	0	0.0	0.0
Cantonment Board	0	0	0	0	0.0	0.0
Tribal/Social Welfare Dept.	0	0	0	0	0.0	0.0
Social Welfare	2	122	9	9	13.6	13.6
Tribal Welfare	1	167	8	8	20.9	20.9
Central Govt.	2	1104	40	36	27.6	30.7
Central School	0	0	0	0	0.0	0.0
Govt Military School	0	0	0	0	0.0	0.0
Navoday Vodyalay	0	0	0	0	0.0	0.0
Railway School	0	0	0	0	0.0	0.0
Gov & Local Body	830	83151	3427	3408	24.3	24.4
Social Welfare Aided	13	753	67	81	11.2	9.3
Tribal Welfare Aided	11	2510	109	89	23.0	28.2
Pvt. Aided	316	110312	3548	2808	31.1	39.3
Partially Aided	1	237	8	7	29.6	33.9
Pvt. Military School	1	777	33	22	23.5	35.3
Private Aided	342	114589	3765	3007	30.4	38.1
Social Welfare Unaided	15	805	108	104	7.5	7.7
Tribal Welfare Unaided	0	0	0	0	0.0	0.0
Unaided	23	3718	175	148	21.2	25.1
Pvt. Unaided	0	0	0	0	0.0	0.0
Permanent Unaided	88	22350	873	769	25.6	29.1
Self Finance	17	2063	120	114	17.2	18.1
Vedic/sanskrit/Dharmic School	0	0	0	0	0.0	0.0
Madarsa recognized	1	15	6	13	2.5	1.2
Madarsa unrecognized	3	70	14	5	5.0	14.0
Others	0	0	0	0	0.0	0.0
No Response	0	0	0	0	0.0	0.0
Private Unaided	147	29021	1296	1153	22.4	25.2
Un-Recognised	9	758	51	62	14.9	12.2
Grand Total	1328	227519	8539	7630	26.6	29.8