



District Profile

Based on Unified District Information System for Education (UDISE), 2017-18

District : Nanded

1 – Demographic (Source : Census of India,2011)

	Male	Female	Person	Sex Ratio	Child Sex Ratio (0-6 years)
Population	17,32,567	16,23,999	33,56,566		
Literacy rate	86.6	66.7	76.9	937	897

2- Number of Schools by Management and Category (Class 1 to 12)

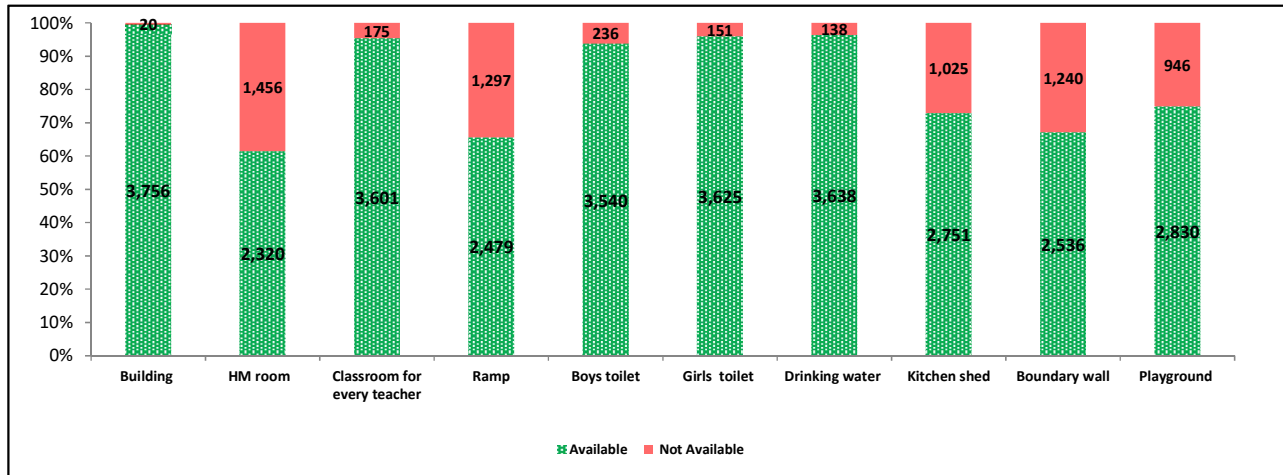
Indicator (Number of schools)	Govt. and Local bodies	Pvt. Aided	Pvt. Unaided	Un-recognised	Total
Primary (1-4/5)	1,519	165	170	5	1,859
Primary with Upper Primary (1-7/8)	694	299	95	6	1,094
Pri,Upper,Secondary with Hsecondary (1 to 12)	8	125	44	4	181
Only Upper Primary (5/6 to 7/8)	0	0	1	0	1
Upper,Secondary with Hsecondary (5/6 to 12)	2	14	4	0	20
Primary,Upperprimary with Secondary(1 to 10)	79	222	58	2	361
Upperprimary with Secondary(5/6 to 10)	17	92	52	0	161
Secondary Only (8/9 to 10)	0	0	11	0	11
Secondary with HSecondary(8/9 to 12)	0	0	2	0	2
Higher Secondary with college attached (11 to 12)	0	20	66	0	86
Total	2,319	937	503	17	3,776
Having Primary level classes	2,300	811	367	17	3,495
Having Upper Primary level classes	800	752	254	12	1,818
Having Secondary level classes	106	453	171	6	736
Having HigherSecondary level classes	10	159	116	4	289
Ratio of Primary to Upper Primary schools	State average				1.86
	District				1.92

3 - Number of Mediumwise Schools by Management .(Class 1 to 12)

Indicator (Number of Mediumwise schools)	Govt. and Local bodies	Pvt. Aided	Pvt. Unaided	Un-recognised	Total
Marathi	2,265	850	246	2	3,363
English	4	4	224	2	234
Hindi	0	5	0	0	5
Urdu	50	78	33	13	174
Bangali	0	0	0	0	0
Gujrati	0	0	0	0	0
Kannada	0	0	0	0	0
Sindhi	0	0	0	0	0
Tamil	0	0	0	0	0
Telgu	0	0	0	0	0
Sanskrit	0	0	0	0	0

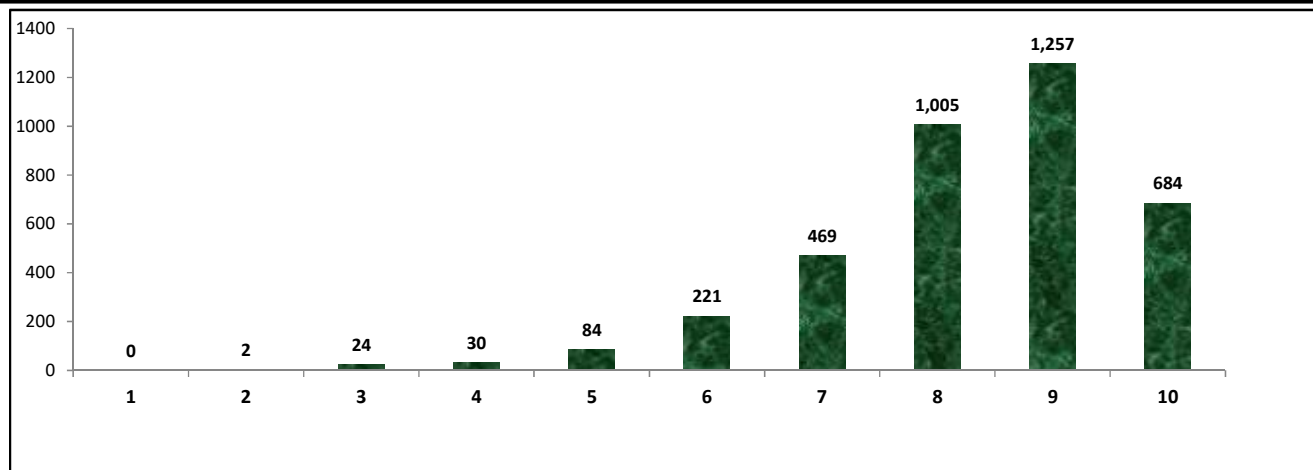
4 – Infrastructure at Elementry Level

Status of Infrastructure Facilities in Schools (Numbers, All schools)



Indicator : Schools with infrastructure facilities available (Sch.All)		Govt. and Local bodies	Pvt. Aided	Pvt. Unaided	Un-recognised	Total
Total Schools		2319	937	503	17	3776
1. Building	Number	2,300	937	502	17	3,756
	%	99.18	100.00	99.80	100.00	99.47
2. Office-cum-store-cum-HM room	Number	1,003	882	422	13	2,320
	%	43.25	94.13	83.90	76.47	61.44
3. One classroom for every teacher	Number	2,274	885	426	16	3,601
	%	98.06	94.45	84.69	94.12	95.37
4. Ramp	Number	1,872	424	179	4	2,479
	%	80.72	45.25	35.59	23.53	65.65
5. Separate toilet for boys	Number	2,137	902	491	10	3,540
	%	92.15	96.26	97.61	58.82	93.75
6. Separate toilet for girls	Number	2,191	931	490	13	3,625
	%	94.48	99.36	97.42	76.47	96.00
7. Drinking water facility	Number	2,267	923	433	15	3,638
	%	97.76	98.51	86.08	88.24	96.35
8. Kitchen shed (Gov & Aided Schools)	Number	2,076	675	NA	NA	2,751
	%	89.52	72.04	NA	NA	84.49
9. Boundary wall	Number	1,341	801	381	13	2,536
	%	57.83	85.49	75.75	76.47	67.16
10. Playground	Number	1,564	857	399	10	2,830
	%	67.44	91.46	79.32	58.82	74.95
Indicators		Govt. and Local bodies	Pvt. Aided	Pvt. Unaided	Un-recognised	Total
Number of classrooms(1 to 8)		8,809	4,198	2,563	60	15,630
Number of classrooms(9 to 10)		6,598	3,998	820	20	11,436
Number of classrooms(11 to 12)		1,877	1,175	664	3	3,719
Student Classroom Ratio (SCR) Primary		17	UpperPri.	33	Elementry	29
Primary schools having SCR more than 30	Number	87	56	26	0	169
	%	5.73	33.94	15.29	0.00	9.09
Upper Primary. schools having SCR more than 35	Number	265	173	29	0	467
	%	33.13	23.01	11.42	0.00	25.69
Schools fulfilling "10" infrastructure norms for building under RTE(Ele.Sch.)	Number	350	256	75	3	684
	%	15.09	27.92	17.16	17.65	18.54

Number of schools by number of infrastructure elements complinace



5- Enrolment (Class 1 to 12)

Number of students enrolled in		Govt. and Local bodies	Pvt. Aided	Pvt. Unaided	Un-recognised	Total
Primary Classes (1-5)	Boys	80,626	57,016	31,961	375	1,69,978
	Girls	84,792	50,324	20,011	522	1,55,649
	Total	1,65,418	1,07,340	51,972	897	3,25,627
Upper Primary Classes (6-8)	Boys	22,434	61,155	11,019	105	94,713
	Girls	27,121	55,580	7,104	132	89,937
	Total	49,555	1,16,735	18,123	237	1,84,650
Secondary Classes (9-10)	Boys	5,532	46,956	7,041	6	59,535
	Girls	5,812	43,313	5,049	37	54,211
	Total	11,344	90,269	12,090	43	1,13,746
Higher Secondary Classes (11-12)	Boys	429	30,385	11,956	4	42,774
	Girls	487	24,803	8,267	3	33,560
	Total	916	55,188	20,223	7	76,334
Elementary Classes (1-8)	Boys	1,03,060	1,18,171	42,980	480	2,64,691
	Girls	1,11,913	1,05,904	27,115	654	2,45,586
	Total	2,14,973	2,24,075	70,095	1,134	5,10,277
All Classes (1-12)	Boys	1,09,021	1,95,512	61,977	490	3,67,000
	Girls	1,18,212	1,74,020	40,431	694	3,33,357
	Total	2,27,233	3,69,532	1,02,408	1,184	7,00,357

5.1- Castewise Enrolment (Class 1 to 12)

Indicator	Primary	Upper Primary	Secondary	Higher Sec.	Elementry	All
All Social Groups	3,25,627	1,84,650	1,13,746	76,334	5,10,277	7,00,357
General	1,14,644	62,065	37,603	26,824	1,76,709	2,41,136
Schedule Castes (SC)	64,061	37,973	25,003	16,126	1,02,034	1,43,163
Schedule Tribes (ST)	28,726	16,393	9,727	6,413	45,119	61,259
Other Backward Classes (OBC)	1,18,196	68,219	41,413	26,971	1,86,415	2,54,799
Muslim	3,30,308	1,64,927	75,880	30,321	4,95,235	6,01,436
Nomadic Tribes (NT)	1,56,421	86,779	46,057	25,814	2,43,200	3,15,071
Vimukat Jatis (VJ)	31,010	15,707	8,617	4,529	46,717	59,863
Special Backward Classes (SBC)	48,691	20,321	9,308	5,952	69,012	84,272
Bouddhist Minority	1,36,073	76,466	41,668	18,689	2,12,539	2,72,896
Parshi Minority	29,254	15,999	6,881	2,188	45,253	54,322
Christan Minority	13,688	7,118	3,022	1,100	20,806	24,928
Sikh Minority	37,635	15,570	7,187	4,626	53,205	65,018
Jain Minority	1,472	1,024	774	501	2,496	3,771
B. P. L.	1,60,362	56,153	16,942	6,261	2,16,515	2,39,718
Children with Special Needs (C.W.S.N.)	6,376	3,001	967	186	9,377	10,530

5.2- Mediumwise Enrolment (Class 1 to 12)

Indicator (Number of Mediumwise schools)	Govt. and Local bodies	Pvt. Aided	Pvt. Unaided	Un-recognised	Total
Marathi	2,17,832	3,16,600	43,396	0	5,77,828
English	1,711	7,314	52,808	189	62,022
Hindi	0	2,123	0	0	2,123
Urdu	7,690	43,495	6,204	995	58,384
Bangali	0	0	0	0	0
Gujrati	0	0	0	0	0
Kannada	0	0	0	0	0
Sindhi	0	0	0	0	0
Tamil	0	0	0	0	0
Telgu	0	0	0	0	0
Sanskrit	0	0	0	0	0
School size (Distribution of schools by Enrolment)	Govt. and Local bodies	Pvt. Aided	Pvt. Unaided	Un-recognised	Total
Less than 10	133	8	31	2	174
11-20	254	5	17	0	276
21-30	357	27	24	1	409
31-60	444	56	75	6	581
61-150	611	160	164	6	941
More than 150	520	681	192	2	1,395

6- Gender Gap in Enrolment (in %)

Indicator	Primary	Upper Primary	Secondary	Higher Secondary	Elementry	All
All Social Groups	4.40	2.59	4.68	12.07	3.74	4.80
General	4.96	3.05	2.60	9.95	4.29	4.66
Schedule Castes (SC)	3.62	2.30	4.44	10.75	3.13	4.22
Schedule Tribes (ST)	3.15	1.54	5.91	9.78	2.56	3.85
Other Backward Classes (OBC)	4.59	2.57	6.43	24.27	2.58	5.65
Muslim	-3.28	-0.88	-2.32	-3.28	0.63	-0.03
Nomadic Tribes (NT)	7.12	2.88	2.69	16.25	5.75	6.18
Vimukat Jatis (VJ)	12.03	15.58	6.57	9.09	13.64	11.66
Special Backward Classes (SBC)	2.38	2.97	12.54	12.54	2.58	5.65
Bouddhist Minority	4.03	4.03	3.95	2.89	4.03	3.92
Parshi Minority	35.64	8.24	10.00	41.82	22.93	22.93
Christan Minority	2.17	1.75	-13.33	42.11	2.01	6.91
Sikh Minority	10.83	14.57	4.94	18.52	12.15	11.85
Jain Minority	12.03	15.58	6.57	9.09	13.64	11.66
B. P. L.	17.33	12.95	2.07	24.06	15.91	14.78
Children with Special Needs (C.W.S.N.)	17.57	13.10	2.38	22.58	2.01	14.99
No. of clusters having gender gap > 10 %	14	7	36	55	10	19
No. of Block having gender gap > 10 %	0	1	2	5	0	0

7- Teacher (Class 1 to 12)

Indicators	Govt. and Local bodies	Pvt. Aided	Pvt. Unaided	Un-recognised	Total
Number of Teachers	Male	7,393	8,439	2,159	18,036
	Female	2,574	2,012	1,353	5,962
	Total	9,967	10,451	3,512	23,998
Percentage of female teachers to total teachers	25.83	19.25	38.53	33.82	24.84
Schools without a female teacher	Number	1,211	312	142	1,675
	%	52.22	33.30	28.23	58.82

7.1- Mediumwise Teacher (Class 1 to 12)

Medium	Govt. and Local bodies	Pvt. Aided	Pvt. Unaided	Un-recognised	Total
Marathi	9,677	9,257	1,499	0	20,433
English	54	107	1,856	19	2,036
Hindi	0	55	0	0	55
Urdu	236	1,032	157	49	1,474
Bangali	0	0	0	0	0
Gujrati	0	0	0	0	0
Kannada	0	0	0	0	0
Sindhi	0	0	0	0	0
Tamil	0	0	0	0	0
Telgu	0	0	0	0	0
Sanskrit	0	0	0	0	0

7.2- Castewise Teacher (Class 1 to 12)

Caste	Govt. and Local bodies	Pvt. Aided	Pvt. Unaided	Un-recognised	Total
All	9,967	10,451	3,512	68	23,998
Genral	4,800	6,315	2,444	59	13,618
SC	1,262	1,179	395	2	2,838
ST	657	432	77	0	1,166
OBC	1,526	1,146	302	5	2,979
VJ	326	388	60	0	774
OTHER	200	320	67	0	587
SBC	280	90	32	0	402
NT-B	269	186	47	2	504
NT-C	363	244	51	0	658
NT-D	284	151	37	0	472

Indicators		Govt. and Local bodies	Pvt. Aided	Pvt. Unaided	Un-recognised	Total
Schools with single teacher	Number	37	4	27	1	69
	%	1.60	0.43	5.37	5.88	1.83
PTR	Local Body-Only	Primary Section	Upper Primary Section	Secondary Section	Elementry Section	All (Class 1-12)
Pupil Teacher Ratio	21	27	34	30	29	29

Indicators		Govt. and Local bodies	Pvt. Aided	Pvt. Unaided	Un-recognised	Total
Primary schools having PTR more than 30	Number	63	77	46	0	186
	%	4.15	46.67	27.06	0.00	10.01
Upper Primary having PTR more than 35	Number	138	54	5	0	197
	%	17.25	7.18	1.97	0.00	10.84
Trained /Untrained Teacher	Primary Section	Upper Primary Section	Secondary Section	Higher Secondary Section	Elementry Section	All
Teacher All	12,217	5,499	4,416	1,866	17,716	23,998
Trained Teacher Number	12,086	5,470	4,413	1,863	17,556	23,832
%	98.93	99.47	99.93	99.84	99.10	99.31
Untrained Teacher All Number	131	29	3	3	160	166
%	1.07	0.53	0.07	0.16	0.90	0.69

8-Efficiency indicators

8.1 Annual Average Drop-out Rate

Social Groups	Primary			UpperPrimary		
	Boys	Girls	Total	Boys	Girls	Total
All Social Groups	3.36	2.41	2.91	3.15	1.83	3.39
General	3.18	1.61	2.44	3.14	-0.97	2.53
Schedule Castes (SC)	3.22	3.02	3.12	2.82	4.95	3.48
Schedule Tribes (ST)	7.36	6.09	6.75	2.24	1.48	3.42
Other Backward Classes (OBC)	2.60	1.91	2.27	3.57	2.57	4.07
Muslim	-0.52	-2.46	-1.47	4.34	-3.53	4.04

8.2 Transition Rate

Social Groups	Primary			UpperPrimary		
	Boys	Girls	Total	Boys	Girls	Total
All Social Groups	97.09	98.51	97.78	96.35	94.69	95.54
General	97.62	99.51	98.53	96.14	96.91	96.52
Schedule Castes (SC)	95.96	97.95	96.93	97.88	93.76	95.84
Schedule Tribes (ST)	95.33	96.06	95.70	98.94	93.04	96.02
Other Backward Classes (OBC)	97.07	98.38	97.71	93.68	93.68	94.41
Muslim	100.54	103.01	101.78	89.82	91.31	90.58

8.3 Gender Parity Index (GPI)

Social Groups	Primary Section	Upper Primary Section	Secondary Section	Higher Secondary Section	Elementry Section	All (Class 1-12)
All Social Groups	0.92	0.61	0.95	0.66	0.91	0.79
General	0.91	0.59	0.94	0.64	0.95	0.81
Schedule Castes (SC)	0.93	0.63	0.95	0.95	0.92	0.75
Schedule Tribes (ST)	0.94	0.60	0.97	0.64	0.89	0.77
Other Backward Classes (OBC)	0.91	0.62	0.95	0.66	0.88	0.80
Muslim	0.97	0.53	1.02	0.50	1.05	0.43

8.4 Retention Rate

Social Groups	Primary			UpperPrimary		
	Boys	Girls	Total	Boys	Girls	Total
All Social Groups	85.31	88.14	86.65	95.06	95.06	94.85
General	87.73	92.30	89.90	91.72	91.72	94.23
Schedule Castes (SC)	83.15	85.70	84.38	94.41	93.04	93.72
Schedule Tribes (ST)	80.72	82.95	81.80	96.31	92.29	94.30
Other Backward Classes (OBC)	92.86	97.32	94.96	92.29	91.39	91.85
Muslim	83.84	89.73	86.65	85.57	91.93	94.85

9. Right To Education (RTE) Information

Subject		Govt. & Local Bodies	Private Aided	Private Un-Aided	Unrecognised	Total
Elementry Schools All(Classses Having 1 to 8)		2,319	917	424	17	3,677
No of Schools CCE being implemented in school	No of Schools	2,300	882	335	13	3,530
	%	99.18	96.18	79.01	76.47	96.00
No of Schools having maintained pupil comulative records	No of Schools	2,295	868	307	10	3,480
	%	98.97	94.66	72.41	58.82	94.64
No. of Schools having shared pupil comulative records with parents	No of Schools	2,293	869	306	10	3,478
	%	98.88	94.77	72.17	58.82	94.59
No. of Schools having Constituted SMC	No of Schools	2,290	817	NA	NA	3,107
	%	98.75	89.09	NA	NA	96.01
No. of Schools having Constituted SMDC	No of Schools	91	319	NA	NA	410
	%	3.92	34.79	NA	NA	12.67
No. of Schools having Constituted SMC & SMDC are same	No of Schools	8	4	NA	NA	12
	%	0.33	0.45	NA	NA	0.36
Avg. total no. of SMC Members in schools	Male	7	7	NA	NA	5
	Female	6	4	NA	NA	3
Avg. no. of representative of parents / Guardians / PTA in SMC	Male	8	4	NA	NA	4
	Female	5	3	NA	NA	2
Avg. no. of representative of local authorities / local government /urban local	Male	1	1	NA	NA	1
	Female	1	1	NA	NA	236
Avg. no. of SMC meetings held in previous year		8	4	NA	NA	4
No.. of Schools having prepared SDP		2,259	677	NA	NA	3,085
No. of Schools having maintained separate SMC bank accounts		2,282	564	NA	NA	2,934
Avg. no. of instructional days of school in previous year	Primary	238	238	236	110	236
	Upper Primary	238	238	236	236	237
	Secondary	235	234	200	228	224
	Higher Secondary	214	233	205	60	178
Avg. of staying childrens hours in schools per day	Primary	5.4	5.3	5.4	5.7	5.5
	Upper Primary	5.4	5.4	5.5	5.2	5.4
	Secondary	5.4	5.3	4.8	5.3	5.2
	Higher Secondary	4.8	4.7	2.0	5.3	4.2
Avg. of teachers working hours in school per day	Primary	5.8	5.8	5.8	5.9	5.8
	Upper Primary	5.8	5.8	5.9	5.5	5.7
	Secondary	5.9	5.8	5.1	5.4	5.5
	Higher Secondary	5.3	5.7	5.1	1.3	4.4
No of Schools having complete set of free text book received	Primary	2,256	700	63	2	3,021
	Upper Primary	961	656	46	1	1,664
No of Schools having TLE available for each grade	Primary	2,145	720	202	7	3,074
	Upper Primary	917	676	120	4	1,717
No of Schools having playing material, games and sports equipment available for each grade\	Primary	1,168	659	196	6	2,029
	Upper Primary	543	629	116	4	1,292
No. of Schools having any children enrolled in school special training	Schools	18	252	2	0	272
No of Children Enrolled for Special Training in Previous Year	Boys	0	0	0	0	0
	Girls	0	0	0	0	0
No of Children Provided for Special Training in Previous Year	Boys	102	252	17	0	371
	Girls	18	252	2	0	272

9. Right To Education (RTE) Information

Subject		Govt. & Local Bodies	Private Aided	Private Un-Aided	Unrecognised	Total
Elementry Schools All(Classess Having 1 to 8)		2,319	917	424	17	3,677
No of Children Enrolled for Special Training in Current Year	Boys	192	200	15	0	407
	Girls	9	23	0	0	32
No of Children Provided for Special Training in Current Year	Boys	102	252	17	0	371
	Girls	18	187	2	0	207
No. of Childrens completed special training during previous year	School Teachers	59	42	10	0	111
	Specially engaged	9	9	0	0	18
	Both	2	1	0	0	3
	NGO	0	0	0	0	0
	Other	1	0	0	0	1
	None	2,248	872	414	17	3,551
Special training is conducted in	School primises	193	71	12	1	277
	Other than School primises	111	61	9	0	181
	Both	6	7	2	0	15
Type of Training	Residential	55	15	1	0	71
	Non Residential	76	26	1	0	103
	Both	3	0	0	0	3

10. CWSN with Special Needs (Current Year)

Type of Facility	Elementary			Secondary / Hsecondary		
	Boys	Girls	Total	Boys	Girls	Total
Blindness	310	190	500	62	66	128
Low-vision	903	939	1,842	118	215	333
Hearing impairment	652	449	1,101	78	36	114
Speech and Language disability	556	299	855	55	29	84
Locomotor Disability	1,020	622	1,642	177	119	296
Mental Illness	196	134	330	10	3	13
Specific Learning Disabilities	580	537	1,117	31	28	59
Cerebral palsy	40	20	60	3	2	5
Autism Spectrum Disorder	33	26	59	0	0	0
Multiple Disability including deaf, blindness	150	93	243	8	1	9
Leprosy Cured persons	7	5	12	0	0	0
Dwarfism	35	41	76	3	6	9
Intellectual Disability	907	507	1,414	55	33	88
Muscular Dystrophy	18	13	31	3	0	3
Chronic Neurological conditions	8	15	23	1	cwsn_15	1
Multiple Sclerosis	12	4	16	0	0	0
Thalassemia	12	34	46	4	3	7
Hemophilia	1	2	3	1	0	1
Sickle Cell disease	4	1	5	3	3	6
Acid Attack victim	0	0	0	0	0	0
Parkinson's disease	1	1	2	0	0	0
Total (Class 1 to 8)	5,445	3,932	9,377	612	544	1,156
Grand Total (Class 1 to 12)	6,057	4,476	10,533			