



District Profile

Based on Unified District Information System for Education (UDISE), 2017-18

District : Parbhani

1 – Demographic (Source : Census of India,2011)

	Male	Female	Person	Sex Ratio	Child Sex Ratio (0-6 years)
Population	9,46,185	8,89,797	18,35,982		
Literacy rate	85.7	64.3	75.2	940	866

2- Number of Schools by Management and Category (Class 1 to 12)

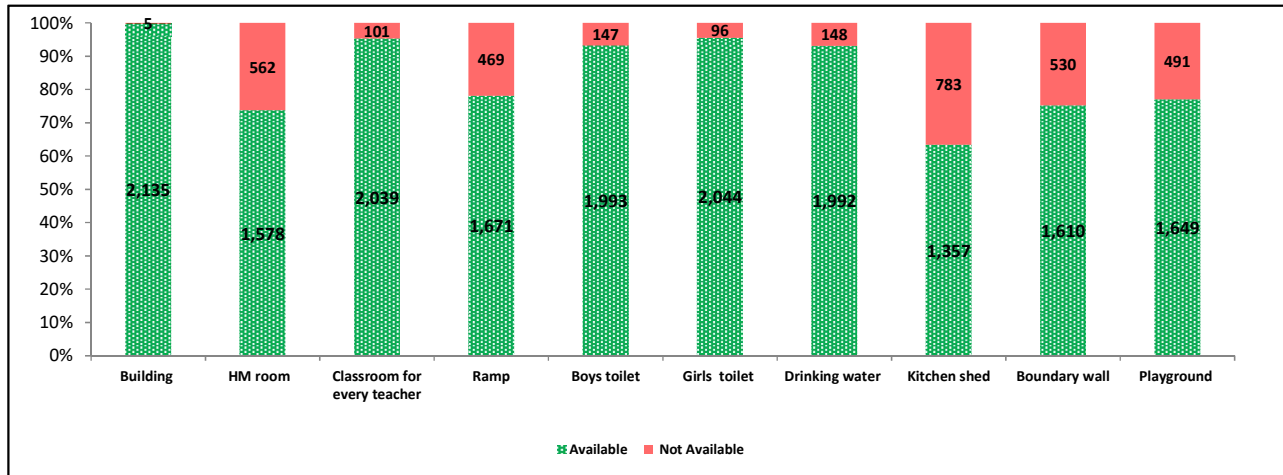
Indicator (Number of schools)	Govt. and Local bodies	Pvt. Aided	Pvt. Unaided	Un-recognised	Total
Primary (1-4/5)	636	49	108	1	794
Primary with Upper Primary (1-7/8)	472	158	105	0	735
Pri,Upper,Secondary with Hsecondary (1 to 12)	1	71	25	0	97
Only Upper Primary (5/6 to 7/8)	0	0	14	0	14
Upper,Secondary with Hsecondary (5/6 to 12)	1	15	8	0	24
Primary,Upperprimary with Secondary(1 to 10)	39	98	35	0	172
Upperprimary with Secondary(5/6 to 10)	16	54	60	1	131
Secondary Only (8/9 to 10)	0	0	44	0	44
Secondary with HSecondary(8/9 to 12)	0	0	2	0	2
Higher Secondary with college attached (11 to 12)	0	16	111	0	127
Total	1,165	461	512	2	2,140
Having Primary level classes	1,148	376	273	1	1,798
Having Upper Primary level classes	529	396	247	1	1,173
Having Secondary level classes	57	238	174	1	470
Having HigherSecondary level classes	2	102	146	0	250
Ratio of Primary to Upper Primary schools	State average				1.86
	District				1.53

3 - Number of Mediumwise Schools by Management .(Class 1 to 12)

Indicator (Number of Mediumwise schools)	Govt. and Local bodies	Pvt. Aided	Pvt. Unaided	Un-recognised	Total
Marathi	1,119	373	318	1	1,811
English	1	1	146	0	148
Hindi	1	0	0	0	1
Urdu	44	87	48	1	180
Bangali	0	0	0	0	0
Gujrati	0	0	0	0	0
Kannada	0	0	0	0	0
Sindhi	0	0	0	0	0
Tamil	0	0	0	0	0
Telgu	0	0	0	0	0
Sanskrit	0	0	0	0	0

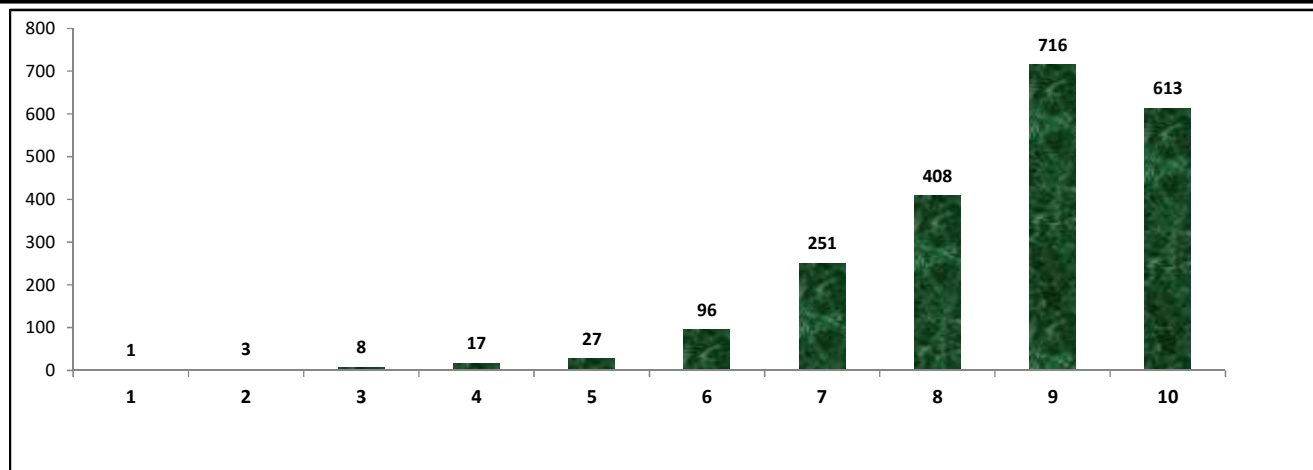
4 – Infrastructure at Elementry Level

Status of Infrastructure Facilities in Schools (Numbers, All schools)



Indicator : Schools with infrastructure facilities available (Sch.All)		Govt. and Local bodies	Pvt. Aided	Pvt. Unaided	Un-recognised	Total
Total Schools		1165	461	512	2	2140
1. Building	Number	1,160	461	512	2	2,135
	%	99.57	100.00	100.00	100.00	99.77
2. Office-cum-store-cum-HM room	Number	652	453	472	1	1,578
	%	55.97	98.26	92.19	50.00	73.74
3. One classroom for every teacher	Number	1,149	435	454	1	2,039
	%	98.63	94.36	88.67	50.00	95.28
4. Ramp	Number	1,024	353	294	0	1,671
	%	87.90	76.57	57.42	0.00	78.08
5. Separate toilet for boys	Number	1,039	453	500	1	1,993
	%	89.18	98.26	97.66	50.00	93.13
6. Separate toilet for girls	Number	1,083	459	500	2	2,044
	%	92.96	99.57	97.66	100.00	95.51
7. Drinking water facility	Number	1,080	460	451	1	1,992
	%	92.70	99.78	88.09	50.00	93.08
8. Kitchen shed (Gov & Aided Schools)	Number	1,045	312	NA	NA	1,357
	%	89.70	67.68	NA	NA	83.46
9. Boundary wall	Number	739	416	455	0	1,610
	%	63.43	90.24	88.87	0.00	75.23
10. Playground	Number	755	438	454	2	1,649
	%	64.81	95.01	88.67	100.00	77.06
Indicators		Govt. and Local bodies	Pvt. Aided	Pvt. Unaided	Un-recognised	Total
Number of classrooms(1 to 8)		4,706	2,355	1,583	2	8,646
Number of classrooms(9 to 10)		4,711	2,529	943	1	8,184
Number of classrooms(11 to 12)		1,437	653	778	0	2,868
Student Classroom Ratio (SCR) Primary		19	UpperPri.	31	Elementry	28
Primary schools having SCR more than 30	Number	48	19	8	0	75
	%	7.55	38.78	7.41	0.00	9.45
Upper Primary. schools having SCR more than 35	Number	201	112	37	0	350
	%	38.00	28.28	14.98	0.00	29.84
Schools fulfilling "10" infrastructure norms for building under RTE (Ele.Sch.)	Number	276	202	135	0	613
	%	23.69	45.39	33.67	0.00	30.45

Number of schools by number of infrastructure elements complinace



5- Enrolment (Class 1 to 12)

Number of students enrolled in		Govt. and Local bodies	Pvt. Aided	Pvt. Unaided	Un-recognised	Total
Primary Classes (1-5)	Boys	46,763	37,137	17,276	0	1,01,176
	Girls	46,636	30,508	10,787	40	87,971
	Total	93,399	67,645	28,063	40	1,89,147
Upper Primary Classes (6-8)	Boys	14,134	37,467	6,736	0	58,337
	Girls	17,347	30,728	4,484	0	52,559
	Total	31,481	68,195	11,220	0	1,10,896
Secondary Classes (9-10)	Boys	2,426	28,668	6,505	0	37,599
	Girls	2,705	24,115	4,133	0	30,953
	Total	5,131	52,783	10,638	0	68,552
Higher Secondary Classes (11-12)	Boys	60	15,805	12,128	0	27,993
	Girls	88	13,156	7,356	0	20,600
	Total	148	28,961	19,484	0	48,593
Elementary Classes (1-8)	Boys	60,897	74,604	24,012	0	1,59,513
	Girls	63,983	61,236	15,271	40	1,40,530
	Total	1,24,880	1,35,840	39,283	40	3,00,043
All Classes (1-12)	Boys	63,383	1,19,077	42,645	0	2,25,105
	Girls	66,776	98,507	26,760	40	1,92,083
	Total	1,30,159	2,17,584	69,405	40	4,17,188

5.1- Castewise Enrolment (Class 1 to 12)

Indicator	Primary	Upper Primary	Secondary	Higher Sec.	Elementry	All
All Social Groups	1,89,147	1,10,896	68,552	48,593	3,00,043	4,17,188
General	87,052	49,156	29,729	20,996	1,36,208	1,86,933
Schedule Castes (SC)	28,096	17,500	11,638	8,052	45,596	65,286
Schedule Tribes (ST)	6,500	3,774	2,102	1,671	10,274	14,047
Other Backward Classes (OBC)	67,499	40,466	25,083	17,874	1,07,965	1,50,922
Muslim	2,59,022	1,25,081	57,739	25,255	3,84,103	4,67,097
Nomadic Tribes (NT)	1,18,396	67,410	37,082	24,065	1,85,806	2,46,953
Vimukat Jatis (VJ)	13,474	8,381	4,642	2,253	21,855	28,750
Special Backward Classes (SBC)	28,234	10,588	4,065	2,651	38,822	45,538
Bouddhist Minority	81,786	50,645	28,295	13,057	1,32,431	1,73,783
Parshi Minority	16,619	8,637	4,308	2,382	25,256	31,946
Christan Minority	24,661	12,676	5,538	3,004	37,337	45,879
Sikh Minority	16,256	7,065	3,135	1,516	23,321	27,972
Jain Minority	1,511	1,222	804	405	2,733	3,942
B. P. L.	95,130	36,884	9,743	2,690	1,32,014	1,44,447
Children with Special Needs (C.W.S.N.)	5,856	3,186	1,445	215	9,042	10,702

5.2- Mediumwise Enrolment (Class 1 to 12)

Indicator (Number of Mediumwise schools)	Govt. and Local bodies	Pvt. Aided	Pvt. Unaided	Un-recognised	Total
Marathi	1,22,610	1,76,770	41,896	0	3,41,276
English	157	2,215	19,498	0	21,870
Hindi	476	0	0	0	476
Urdu	6,916	38,599	8,011	40	53,566
Bangali	0	0	0	0	0
Gujrati	0	0	0	0	0
Kannada	0	0	0	0	0
Sindhi	0	0	0	0	0
Tamil	0	0	0	0	0
Telgu	0	0	0	0	0
Sanskrit	0	0	0	0	0
School size (Distribution of schools by Enrolment)	Govt. and Local bodies	Pvt. Aided	Pvt. Unaided	Un-recognised	Total
Less than 10	28	2	31	1	62
11-20	60	3	34	0	97
21-30	155	14	33	0	202
31-60	231	4	82	1	318
61-150	349	56	169	0	574
More than 150	342	382	163	0	887

6- Gender Gap in Enrolment (in %)

Indicator	Primary	Upper Primary	Secondary	Higher Secondary	Elementry	All
All Social Groups	6.98	5.21	9.69	15.21	6.33	7.92
General	8.10	5.03	9.43	12.61	6.99	8.01
Schedule Castes (SC)	3.08	4.42	9.04	13.86	3.60	5.83
Schedule Tribes (ST)	6.62	3.29	16.65	22.20	5.39	9.08
Other Backward Classes (OBC)	7.19	5.95	9.73	21.88	5.99	8.86
Muslim	4.70	1.78	1.72	4.70	2.58	2.58
Nomadic Tribes (NT)	10.45	4.35	8.09	20.89	8.41	9.54
Vimukat Jatis (VJ)	16.74	10.74	24.80	2.50	13.68	14.41
Special Backward Classes (SBC)	6.15	5.74	16.07	16.07	5.99	8.86
Bouddhist Minority	4.22	7.61	8.92	14.13	5.50	6.95
Parshi Minority	48.94	20.00	17.65	-26.32	43.86	23.64
Christan Minority	-45.68	-16.67	0.00	-11.11	-39.05	-35.59
Sikh Minority	7.32	18.10	39.29	33.33	11.52	19.07
Jain Minority	16.74	10.74	24.80	2.50	13.68	14.41
B. P. L.	22.65	12.25	-1.81	-21.33	18.95	15.24
Children with Special Needs (C.W.S.N.)	22.58	14.00	-1.04	-19.07	-39.05	16.00
No. of clusters having gender gap > 10 %	7	13	38	39	5	15
No. of Block having gender gap > 10 %	1	1	4	9	1	1

7- Teacher (Class 1 to 12)

Indicators	Govt. and Local bodies	Pvt. Aided	Pvt. Unaided	Un-recognised	Total
Number of Teachers	Male	4,102	4,582	1,820	10,505
	Female	1,400	1,290	1,013	3,708
	Total	5,502	5,872	2,833	14,213
Percentage of female teachers to total teachers	25.45	21.97	35.76	83.33	26.09
Schools without a female teacher	Number	572	140	172	884
	%	49.10	30.37	33.59	0.00

7.1- Mediumwise Teacher (Class 1 to 12)

Medium	Govt. and Local bodies	Pvt. Aided	Pvt. Unaided	Un-recognised	Total
Marathi	5,203	4,831	1,669	4	11,707
English	8	45	908	0	961
Hindi	6	0	0	0	6
Urdu	285	996	256	2	1,539
Bangali	0	0	0	0	0
Gujrati	0	0	0	0	0
Kannada	0	0	0	0	0
Sindhi	0	0	0	0	0
Tamil	0	0	0	0	0
Telgu	0	0	0	0	0
Sanskrit	0	0	0	0	0

7.2- Castewise Teacher (Class 1 to 12)

Caste	Govt. and Local bodies	Pvt. Aided	Pvt. Unaided	Un-recognised	Total
All	5,502	5,872	2,833	6	14,213
Genral	2,350	3,339	1,736	2	7,427
SC	619	548	303	0	1,470
ST	339	220	67	0	626
OBC	858	720	262	0	1,840
VJ	292	329	168	0	789
OTHER	107	230	94	1	432
SBC	125	63	27	3	218
NT-B	156	60	38	0	254
NT-C	303	187	65	0	555
NT-D	353	176	73	0	602

Indicators		Govt. and Local bodies	Pvt. Aided	Pvt. Unaided	Un-recognised	Total
Schools with single teacher	Number	12	0	13	0	25
	%	1.03	0.00	2.54	0.00	1.17
PTR	Local Body-Only	Primary Section	Upper Primary Section	Secondary Section	Elementry Section	All (Class 1-12)
Pupil Teacher Ratio	40	27	33	30	29	29

Indicators		Govt. and Local bodies	Pvt. Aided	Pvt. Unaided	Un-recognised	Total
Primary schools having PTR more than 30	Number	40	27	14	0	81
	%	6.29	55.10	12.96	0.00	10.20
Upper Primary having PTR more than 35	Number	97	41	16	0	154
	%	18.34	10.35	6.48	0.00	13.13
Trained /Untrained Teacher	Primary Section	Upper Primary Section	Secondary Section	Higher Secondary Section	Elementry Section	All
Teacher All	6,939	3,333	2,696	1,245	10,272	14,213
Trained Teacher Number	6,866	3,288	2,661	1,228	10,154	14,043
%	98.95	98.65	98.70	98.63	98.85	98.80
Untrained Teacher All Number	73	45	35	17	118	170
%	1.05	1.35	1.30	1.37	1.15	1.20

8-Efficiency indicators

8.1 Annual Average Drop-out Rate

Social Groups	Primary			UpperPrimary		
	Boys	Girls	Total	Boys	Girls	Total
All Social Groups	3.15	2.77	2.97	2.52	2.67	3.21
General	2.94	3.22	3.07	2.67	1.59	3.17
Schedule Castes (SC)	2.94	2.76	2.85	3.64	6.45	4.29
Schedule Tribes (ST)	3.87	5.07	4.45	2.03	-3.17	3.71
Other Backward Classes (OBC)	3.44	1.97	2.76	1.89	2.78	2.72
Muslim	3.47	3.47	3.47	4.20	0.88	4.06

8.2 Transition Rate

Social Groups	Primary			UpperPrimary		
	Boys	Girls	Total	Boys	Girls	Total
All Social Groups	98.43	96.94	97.73	95.85	93.71	94.85
General	99.20	97.40	98.36	96.84	93.48	95.26
Schedule Castes (SC)	95.68	100.39	97.96	94.34	93.53	93.95
Schedule Tribes (ST)	96.26	95.07	95.67	100.48	98.77	99.73
Other Backward Classes (OBC)	98.14	97.02	97.61	93.69	93.69	94.36
Muslim	98.30	94.99	96.71	90.58	93.45	92.00

8.3 Gender Parity Index (GPI)

Social Groups	Primary Section	Upper Primary Section	Secondary Section	Higher Secondary Section	Elementry Section	All (Class 1-12)
All Social Groups	0.87	0.66	0.90	0.72	0.82	0.90
General	0.85	0.65	0.90	0.70	0.83	0.88
Schedule Castes (SC)	0.94	0.67	0.92	0.92	0.83	0.87
Schedule Tribes (ST)	0.88	0.64	0.94	0.67	0.71	1.17
Other Backward Classes (OBC)	0.87	0.68	0.89	0.72	0.82	0.93
Muslim	0.94	0.56	0.96	0.53	0.97	0.45

8.4 Retention Rate

Social Groups	Primary			UpperPrimary		
	Boys	Girls	Total	Boys	Girls	Total
All Social Groups	87.29	88.82	88.01	95.35	95.35	94.55
General	94.41	98.69	96.37	91.34	91.34	85.91
Schedule Castes (SC)	84.98	84.99	84.99	93.94	93.75	93.85
Schedule Tribes (ST)	91.39	87.54	89.52	96.97	88.67	92.88
Other Backward Classes (OBC)	96.86	102.10	99.31	95.08	89.00	92.18
Muslim	84.39	83.97	88.01	87.05	94.85	94.55

9. Right To Education (RTE) Information

Subject		Govt. & Local Bodies	Private Aided	Private Un-Aided	Unrecognised	Total
Elementry Schools All(Classes Having 1 to 8)		1,165	445	355	2	1,967
No of Schools CCE being implemented in school	No of Schools	1,163	427	299	0	1,889
	%	99.83	95.96	84.23	0.00	96.03
No of Schools having maintained pupil comulative records	No of Schools	1,159	431	283	0	1,873
	%	99.48	96.85	79.72	0.00	95.22
No. of Schools having shared pupil comulative records with parents	No of Schools	1,159	430	284	0	1,873
	%	99.48	96.63	80.00	0.00	95.22
No. of Schools having Constituted SMC	No of Schools	1,154	270	NA	NA	1,424
	%	99.06	60.67	NA	NA	88.45
No. of Schools having Constituted SMDC	No of Schools	46	103	NA	NA	149
	%	3.95	23.15	NA	NA	9.25
No. of Schools having Constituted SMC & SMDC are same	No of Schools	9	2	NA	NA	11
	%	0.77	0.53	NA	NA	0.70
Avg. total no. of SMC Members in schools	Male	8	4	NA	NA	4
	Female	6	3	NA	NA	3
Avg. no. of representative of parents / Guardians / PTA in SMC	Male	9	2	NA	NA	4
	Female	5	2	NA	NA	3
Avg. no. of representative of local authorities / local government /urban local	Male	1	1	NA	NA	1
	Female	1	0	NA	NA	230
Avg. no. of SMC meetings held in previous year		9	2	NA	NA	4
No.. of Schools having prepared SDP		1,117	195	NA	NA	1,360
No. of Schools having maintained separate SMC bank accounts		1,149	160	NA	NA	1,346
Avg. no. of instructional days of school in previous year	Primary	235	233	233	235	230
	Upper Primary	236	234	218	0	229
	Secondary	238	236	219	0	173
	Higher Secondary	254	230	220	0	234
Avg. of staying childrens hours in schools per day	Primary	5.3	5.2	5.3	5.3	5.3
	Upper Primary	5.4	5.3	5.0	0.0	5.2
	Secondary	5.5	5.4	5.0	0.0	4.0
	Higher Secondary	5.7	4.6	1.1	0.0	3.8
Avg. of teachers working hours in school per day	Primary	5.8	5.5	5.7	5.3	5.6
	Upper Primary	5.8	5.8	5.4	0.0	5.7
	Secondary	5.9	5.8	5.4	0.0	4.3
	Higher Secondary	6.0	5.8	5.5	0.0	5.7
No of Schools having complete set of free text book received	Primary	1,130	293	51	0	1,474
	Upper Primary	582	333	33	0	948
No of Schools having TLE available for each grade	Primary	1,088	314	172	0	1,574
	Upper Primary	564	359	128	0	1,051
No of Schools having playing material, games and sports equipment available for each grade\	Primary	559	297	170	0	1,026
	Upper Primary	310	337	125	0	772
No. of Schools having any children enrolled in school special training	Schools	251	75	2	0	328
No of Children Enrolled for Special Training in Previous Year	Boys	0	0	0	0	0
	Girls	0	0	0	0	0
No of Children Provided for Special Training in Previous Year	Boys	15	75	4	0	94
	Girls	251	75	2	0	328

9. Right To Education (RTE) Information

Subject		Govt. & Local Bodies	Private Aided	Private Un-Aided	Unrecognised	Total
Elementry Schools All(Classses Having 1 to 8)		1,165	445	355	2	1,967
No of Children Enrolled for Special Training in Current Year	Boys	166	52	15	0	233
	Girls	55	9	0	0	64
No of Children Provided for Special Training in Current Year	Boys	15	75	4	0	94
	Girls	251	12	2	0	265
No. of Childrens completed special training during previous year	School Teachers	75	36	13	0	124
	Specially engaged	30	30	0	0	60
	Both	1	1	2	0	4
	NGO	0	0	0	0	0
	Other	2	0	0	0	2
	None	1,057	404	340	2	1,803
Special training is conducted in	School primises	32	21	5	0	58
	Other than School primises	4	1	2	0	7
	Both	0	0	2	0	2
Type of Training	Residential	26	6	5	0	37
	Non Residential	38	14	5	0	57
	Both	1	2	1	0	4

10. CWSN with Special Needs (Current Year)

Type of Facility	Elementary			Secondary / Hsecondary		
	Boys	Girls	Total	Boys	Girls	Total
Blindness	40	53	93	14	9	23
Low-vision	1,095	1,021	2,116	348	557	905
Hearing impairment	510	355	865	72	65	137
Speech and Language disability	1,367	621	1,988	106	57	163
Locomotor Disability	808	464	1,272	173	111	284
Mental Illness	111	78	189	4	2	6
Specific Learning Disabilities	539	390	929	24	6	30
Cerebral palsy	87	59	146	7	5	12
Autism Spectrum Disorder	8	10	18	2	1	3
Multiple Disability including deaf, blindness	100	60	160	4	6	10
Leprosy Cured persons	1	5	6	0	0	0
Dwarfism	18	14	32	4	3	7
Intellectual Disability	692	485	1,177	42	33	75
Muscular Dystrophy	19	14	33	0	0	0
Chronic Neurological conditions	0	3	3	1	cwsn_15	1
Multiple Sclerosis	2	0	2	0	0	0
Thalassemia	1	1	2	1	0	1
Hemophilia	3	1	4	0	0	0
Sickle Cell disease	3	3	6	0	0	0
Acid Attack victim	0	0	0	0	0	0
Parkinson's disease	1	0	1	0	1	1
Total (Class 1 to 8)	5,405	3,637	9,042	802	856	1,658
Grand Total (Class 1 to 12)	6,207	4,493	10,700			