



District Profile

Based on Unified District Information System for Education (UDISE), 2017-18

District : Satara

1 – Demographic (Source : Census of India,2011)

	Male	Female	Person	Sex Ratio	Child Sex Ratio (0-6 years)
Population	15,12,524	14,91,398	30,03,922		
Literacy rate	92.1	76.3	84.2	986	881

2- Number of Schools by Management and Category (Class 1 to 12)

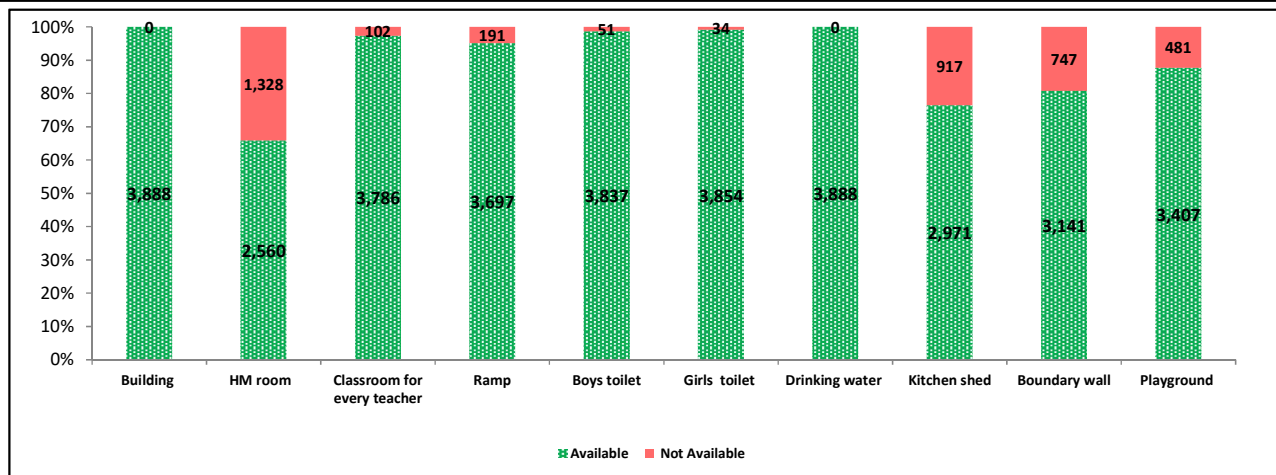
Indicator (Number of schools)	Govt. and Local bodies	Pvt. Aided	Pvt. Unaided	Un-recognised	Total
Primary (1-4/5)	1,916	69	88	12	2,085
Primary with Upper Primary (1-7/8)	845	47	88	10	990
Pri,Upper,Secondary with Hsecondary (1 to 12)	1	133	39	0	173
Only Upper Primary (5/6 to 7/8)	0	0	1	0	1
Upper,Secondary with Hsecondary (5/6 to 12)	2	9	2	0	13
Primary,Upperprimary with Secondary(1 to 10)	2	250	87	1	340
Upperprimary with Secondary(5/6 to 10)	2	176	44	0	222
Secondary Only (8/9 to 10)	0	0	17	0	17
Secondary with HSecondary(8/9 to 12)	0	0	1	0	1
Higher Secondary with college attached (11 to 12)	2	19	25	0	46
Total	2,770	703	392	23	3,888
Having Primary level classes	2,764	499	302	23	3,588
Having Upper Primary level classes	852	615	261	11	1,739
Having Secondary level classes	7	568	190	1	766
Having HigherSecondary level classes	5	161	67	0	233
Ratio of Primary to Upper Primary schools	State average				1.86
	District				2.06

3 - Number of Mediumwise Schools by Management .(Class 1 to 12)

Indicator (Number of Mediumwise schools)	Govt. and Local bodies	Pvt. Aided	Pvt. Unaided	Un-recognised	Total
Marathi	2,753	693	109	2	3,557
English	2	3	280	8	293
Hindi	0	0	0	0	0
Urdu	15	7	3	13	38
Bangali	0	0	0	0	0
Gujrati	0	0	0	0	0
Kannada	0	0	0	0	0
Sindhi	0	0	0	0	0
Tamil	0	0	0	0	0
Telgu	0	0	0	0	0
Sanskrit	0	0	0	0	0

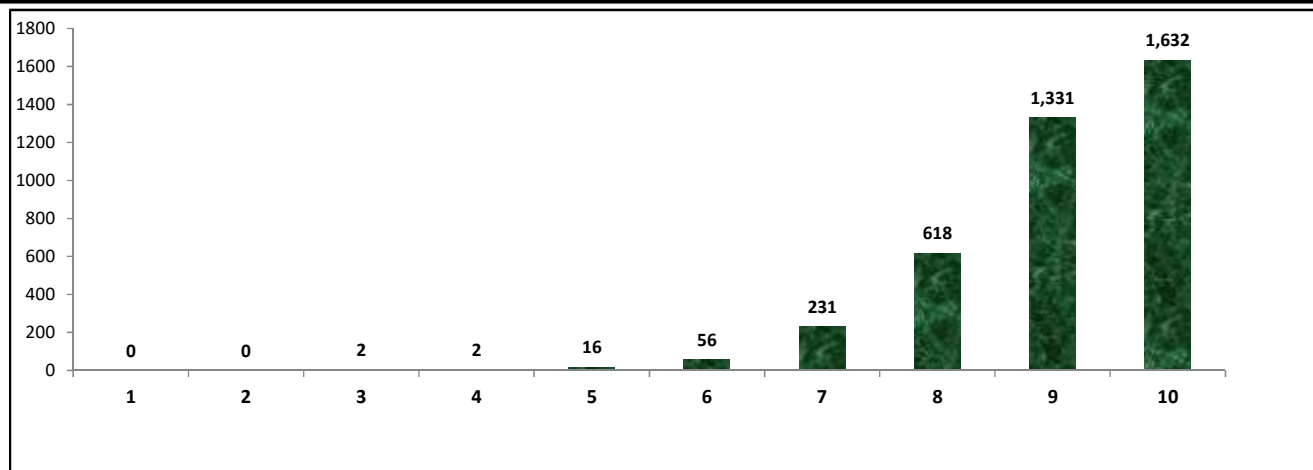
4 – Infrastructure at Elementry Level

Status of Infrastructure Facilities in Schools (Numbers, All schools)



Indicator : Schools with infrastructure facilities available (Sch.All)		Govt. and Local bodies	Pvt. Aided	Pvt. Unaided	Un-recognised	Total
Total Schools		2770	703	392	23	3888
1. Building	Number	2,770	703	392	23	3,888
	%	100.00	100.00	100.00	100.00	100.00
2. Office-cum-store-cum-HM room	Number	1,513	656	374	17	2,560
	%	54.62	93.31	95.41	73.91	65.84
3. One classroom for every teacher	Number	2,728	677	361	20	3,786
	%	98.48	96.30	92.09	86.96	97.38
4. Ramp	Number	2,688	668	334	7	3,697
	%	97.04	95.02	85.20	30.43	95.09
5. Separate toilet for boys	Number	2,735	693	390	19	3,837
	%	98.74	98.58	99.49	82.61	98.69
6. Separate toilet for girls	Number	2,748	702	391	13	3,854
	%	99.21	99.86	99.74	56.52	99.13
7. Drinking water facility	Number	2,770	703	392	23	3,888
	%	100.00	100.00	100.00	100.00	100.00
8. Kitchen shed (Gov & Aided Schools)	Number	2,399	572	NA	NA	2,971
	%	86.61	81.37	NA	NA	85.55
9. Boundary wall	Number	2,079	675	371	16	3,141
	%	75.05	96.02	94.64	69.57	80.79
10. Playground	Number	2,324	689	375	19	3,407
	%	83.90	98.01	95.66	82.61	87.63
Indicators		Govt. and Local bodies	Pvt. Aided	Pvt. Unaided	Un-recognised	Total
Number of classrooms(1 to 8)		7,608	1,598	1,664	89	10,959
Number of classrooms(9 to 10)		7,429	4,681	1,120	15	13,245
Number of classrooms(11 to 12)		1,924	1,611	276	0	3,811
Student Classroom Ratio (SCR) Primary		16	UpperPri.	28	Elementry	25
Primary schools having SCR more than 30	Number	32	41	17	0	90
	%	1.67	59.42	19.32	0.00	4.32
Upper Primary. schools having SCR more than 35	Number	156	27	34	0	217
	%	18.31	4.39	13.03	0.00	12.48
Schools fulfilling "10" infrastructure norms for building under RTE (Ele.Sch.)	Number	989	467	174	2	1,632
	%	35.73	68.27	47.41	8.70	42.48

Number of schools by number of infrastructure elements complinace



5- Enrolment (Class 1 to 12)

Number of students enrolled in		Govt. and Local bodies	Pvt. Aided	Pvt. Unaided	Un-recognised	Total
Primary Classes (1-5)	Boys	61,191	25,324	26,026	509	1,13,050
	Girls	60,586	22,204	17,125	220	1,00,135
	Total	1,21,777	47,528	43,151	729	2,13,185
Upper Primary Classes (6-8)	Boys	11,990	45,805	12,522	180	70,497
	Girls	12,497	42,039	7,586	40	62,162
	Total	24,487	87,844	20,108	220	1,32,659
Secondary Classes (9-10)	Boys	517	42,209	7,358	26	50,110
	Girls	206	38,263	4,360	0	42,829
	Total	723	80,472	11,718	26	92,939
Higher Secondary Classes (11-12)	Boys	614	38,511	3,695	0	42,820
	Girls	229	32,146	2,205	0	34,580
	Total	843	70,657	5,900	0	77,400
Elementary Classes (1-8)	Boys	73,181	71,129	38,548	689	1,83,547
	Girls	73,083	64,243	24,711	260	1,62,297
	Total	1,46,264	1,35,372	63,259	949	3,45,844
All Classes (1-12)	Boys	74,312	1,51,849	49,601	715	2,76,477
	Girls	73,518	1,34,652	31,276	260	2,39,706
	Total	1,47,830	2,86,501	80,877	975	5,16,183

5.1- Castewise Enrolment (Class 1 to 12)

Indicator	Primary	Upper Primary	Secondary	Higher Sec.	Elementry	All
All Social Groups	2,13,185	1,32,659	92,939	77,400	3,45,844	5,16,183
General	1,09,977	70,002	50,307	43,603	1,79,979	2,73,889
Schedule Castes (SC)	26,696	16,400	11,889	9,141	43,096	64,126
Schedule Tribes (ST)	4,690	2,937	1,001	554	7,627	9,182
Other Backward Classes (OBC)	71,822	43,320	29,742	24,102	1,15,142	1,68,986
Muslim	75,841	44,636	26,888	14,384	1,20,477	1,61,749
Nomadic Tribes (NT)	1,22,195	76,796	48,603	34,170	1,98,991	2,81,764
Vimukat Jatis (VJ)	13,742	7,787	5,065	3,008	21,529	29,602
Special Backward Classes (SBC)	16,314	11,891	7,579	4,846	28,205	40,630
Bouddhist Minority	23,612	12,422	7,167	7,481	36,034	50,682
Parshi Minority	3,779	1,993	1,257	1,205	5,772	8,234
Christan Minority	7,729	5,314	3,219	1,951	13,043	18,213
Sikh Minority	13,687	7,539	3,910	2,212	21,226	27,348
Jain Minority	3,025	2,150	1,498	894	5,175	7,567
B. P. L.	49,697	33,864	20,136	10,487	83,561	1,14,184
Children with Special Needs (C.W.S.N.)	6,063	3,636	1,817	358	9,699	11,874

5.2- Mediumwise Enrolment (Class 1 to 12)

Indicator (Number of Mediumwise schools)	Govt. and Local bodies	Pvt. Aided	Pvt. Unaided	Un-recognised	Total
Marathi	1,45,787	2,80,702	12,236	38	4,38,763
English	1,002	3,942	68,345	210	73,499
Hindi	0	0	0	0	0
Urdu	1,041	1,857	296	727	3,921
Bangali	0	0	0	0	0
Gujrati	0	0	0	0	0
Kannada	0	0	0	0	0
Sindhi	0	0	0	0	0
Tamil	0	0	0	0	0
Telgu	0	0	0	0	0
Sanskrit	0	0	0	0	0
School size (Distribution of schools by Enrolment)	Govt. and Local bodies	Pvt. Aided	Pvt. Unaided	Un-recognised	Total
Less than 10	371	0	14	2	387
11-20	551	1	27	3	582
21-30	516	5	13	5	539
31-60	566	29	58	8	661
61-150	558	218	110	5	891
More than 150	208	450	170	0	828

6- Gender Gap in Enrolment (in %)

Indicator	Primary	Upper Primary	Secondary	Higher Secondary	Elementry	All
All Social Groups	6.06	6.28	7.83	10.65	6.14	7.12
General	6.76	6.29	7.98	10.48	6.58	7.46
Schedule Castes (SC)	3.76	4.09	6.89	8.19	3.88	5.06
Schedule Tribes (ST)	8.66	15.42	19.48	24.55	11.26	12.96
Other Backward Classes (OBC)	5.67	6.49	7.57	12.17	4.32	5.31
Muslim	2.19	5.63	6.72	2.19	4.66	4.74
Nomadic Tribes (NT)	8.67	7.26	4.87	7.47	8.12	7.45
Vimukat Jatis (VJ)	9.13	1.75	2.72	-13.14	5.82	2.71
Special Backward Classes (SBC)	2.81	7.00	5.43	5.43	4.32	5.31
Bouddhist Minority	3.50	5.82	8.27	-1.08	4.32	4.20
Parshi Minority	-12.20	-33.33	33.33	33.33	-21.62	-9.47
Christan Minority	8.51	1.27	17.65	9.80	5.20	8.53
Sikh Minority	5.00	13.33	33.33	33.33	8.57	16.00
Jain Minority	9.13	1.75	2.72	-13.14	5.82	2.71
B. P. L.	22.41	12.69	7.21	3.68	18.77	16.58
Children with Special Needs (C.W.S.N.)	22.32	12.21	6.66	-3.91	5.20	16.04
No. of clusters having gender gap > 10 %	26	42	62	55	20	32
No. of Block having gender gap > 10 %	1	1	3	7	1	1

7- Teacher (Class 1 to 12)

Indicators	Govt. and Local bodies	Pvt. Aided	Pvt. Unaided	Un-recognised	Total
Number of Teachers	Male	4,764	5,892	1,235	11,929
	Female	3,817	2,499	2,035	8,392
	Total	8,581	8,391	3,270	20,321
Percentage of female teachers to total teachers	44.48	29.78	62.23	51.90	41.30
Schools without a female teacher	Number	850	135	40	1,034
	%	30.69	19.20	10.20	39.13

7.1- Mediumwise Teacher (Class 1 to 12)

Medium	Govt. and Local bodies	Pvt. Aided	Pvt. Unaided	Un-recognised	Total
Marathi	8,496	8,275	595	2	17,368
English	36	71	2,656	34	2,797
Hindi	0	0	0	0	0
Urdu	49	45	19	43	156
Bangali	0	0	0	0	0
Gujrati	0	0	0	0	0
Kannada	0	0	0	0	0
Sindhi	0	0	0	0	0
Tamil	0	0	0	0	0
Telgu	0	0	0	0	0
Sanskrit	0	0	0	0	0

7.2- Castewise Teacher (Class 1 to 12)

Caste	Govt. and Local bodies	Pvt. Aided	Pvt. Unaided	Un-recognised	Total
All	8,581	8,391	3,270	79	20,321
Genral	4,272	5,041	2,356	62	11,731
SC	1,121	836	272	1	2,230
ST	380	353	42	0	775
OBC	1,463	1,152	381	12	3,008
VJ	223	166	45	2	436
OTHER	89	66	33	1	189
SBC	184	149	28	0	361
NT-B	229	192	39	1	461
NT-C	430	351	73	0	854
NT-D	190	85	1	0	276

Indicators		Govt. and Local bodies	Pvt. Aided	Pvt. Unaided	Un-recognised	Total
Schools with single teacher	Number	155	1	3	2	161
	%	5.60	0.14	0.77	8.70	4.14
PTR	Local Body-Only	Primary Section	Upper Primary Section	Secondary Section	Elementry Section	All (Class 1-12)
Pupil Teacher Ratio	10	22	29	29	24	25

Indicators		Govt. and Local bodies	Pvt. Aided	Pvt. Unaided	Un-recognised	Total
Primary schools having PTR more than 30	Number	70	53	16	1	140
	%	3.65	76.81	18.18	8.33	6.71
Upper Primary having PTR more than 35	Number	29	11	18	1	59
	%	3.40	1.79	6.90	9.09	3.39
Trained /Untrained Teacher	Primary Section	Upper Primary Section	Secondary Section	Higher Secondary Section	Elementry Section	All
Teacher All	9,800	4,629	4,143	1,749	14,429	20,321
Trained Teacher Number	9,696	4,603	4,117	1,703	14,299	20,119
%	98.94	99.44	99.37	97.37	99.10	99.01
Untrained Teacher All Number	104	26	26	46	130	202
%	1.06	0.56	0.63	2.63	0.90	0.99

8-Efficiency indicators

8.1 Annual Average Drop-out Rate

Social Groups	Primary			UpperPrimary		
	Boys	Girls	Total	Boys	Girls	Total
All Social Groups	0.61	0.65	0.63	0.60	3.95	0.73
General	1.03	1.22	1.12	0.43	5.13	0.65
Schedule Castes (SC)	1.09	1.39	1.24	1.49	4.91	1.11
Schedule Tribes (ST)	-3.49	-0.25	-2.01	1.77	-24.57	4.88
Other Backward Classes (OBC)	0.07	-0.46	-0.18	0.47	2.99	0.49
Muslim	2.81	-2.15	0.49	4.59	1.83	3.40

8.2 Transition Rate

Social Groups	Primary			UpperPrimary		
	Boys	Girls	Total	Boys	Girls	Total
All Social Groups	99.39	99.26	99.33	99.75	98.71	99.26
General	99.15	98.85	99.01	100.13	99.62	99.89
Schedule Castes (SC)	100.55	97.19	98.91	98.61	98.33	98.47
Schedule Tribes (ST)	113.52	103.83	109.03	99.72	95.12	97.86
Other Backward Classes (OBC)	99.10	100.33	99.67	97.51	97.51	98.60
Muslim	92.17	100.80	96.08	93.54	95.24	94.33

8.3 Gender Parity Index (GPI)

Social Groups	Primary Section	Upper Primary Section	Secondary Section	Higher Secondary Section	Elementry Section	All (Class 1-12)
All Social Groups	0.89	0.70	0.88	0.81	0.85	1.00
General	0.87	0.73	0.88	0.83	0.85	1.04
Schedule Castes (SC)	0.93	0.66	0.92	0.92	0.87	0.89
Schedule Tribes (ST)	0.84	0.79	0.73	0.48	0.67	0.86
Other Backward Classes (OBC)	0.89	0.68	0.88	0.79	0.86	0.98
Muslim	0.92	0.65	0.89	0.72	0.87	0.69

8.4 Retention Rate

Social Groups	Primary			UpperPrimary		
	Boys	Girls	Total	Boys	Girls	Total
All Social Groups	95.91	96.25	96.07	99.20	99.20	99.04
General	108.79	111.40	110.01	107.62	107.62	100.91
Schedule Castes (SC)	97.38	95.79	96.61	98.78	101.49	100.05
Schedule Tribes (ST)	131.92	113.11	123.14	102.62	88.43	96.30
Other Backward Classes (OBC)	105.41	105.04	105.24	104.54	104.70	104.61
Muslim	88.77	93.44	96.07	98.04	94.85	99.04

9. Right To Education (RTE) Information

Subject		Govt. & Local Bodies	Private Aided	Private Un-Aided	Unrecognised	Total
Elementry Schools All(Classess Having 1 to 8)		2,768	684	349	23	3,824
No of Schools CCE being implemented in school	No of Schools	2,763	674	322	13	3,772
	%	99.82	98.54	92.26	56.52	98.64
No of Schools having maintained pupil comulative records	No of Schools	2,761	673	319	13	3,766
	%	99.75	98.39	91.40	56.52	98.48
No. of Schools having shared pupil comulative records with parents	No of Schools	2,761	670	319	13	3,763
	%	99.75	97.95	91.40	56.52	98.40
No. of Schools having Constituted SMC	No of Schools	2,765	672	NA	NA	3,437
	%	99.89	98.25	NA	NA	99.57
No. of Schools having Constituted SMDC	No of Schools	6	533	NA	NA	539
	%	0.22	77.92	NA	NA	15.61
No. of Schools having Constituted SMC & SMDC are same	No of Schools	10	6	NA	NA	16
	%	0.36	0.83	NA	NA	0.45
Avg. total no. of SMC Members in schools	Male	7	8	NA	NA	5
	Female	7	6	NA	NA	4
Avg. no. of representative of parents / Guardians / PTA in SMC	Male	10	6	NA	NA	4
	Female	5	5	NA	NA	3
Avg. no. of representative of local authorities / local government /urban local	Male	1	1	NA	NA	1
	Female	1	1	NA	NA	227
Avg. no. of SMC meetings held in previous year		10	6	NA	NA	4
No.. of Schools having prepared SDP		2,758	642	NA	NA	3,489
No. of Schools having maintained separate SMC bank accounts		2,764	629	NA	NA	3,423
Avg. no. of instructional days of school in previous year	Primary	234	230	231	217	227
	Upper Primary	232	235	223	234	231
	Secondary	202	224	218	250	223
	Higher Secondary	184	223	205	2	204
Avg. of staying childrens hours in schools per day	Primary	5.9	5.8	5.8	6.1	5.9
	Upper Primary	5.9	5.8	5.6	5.6	5.7
	Secondary	5.7	5.7	5.6	5.5	5.6
	Higher Secondary	2.6	5.1	3.6	2.0	3.7
Avg. of teachers working hours in school per day	Primary	6.8	6.7	6.7	6.7	6.7
	Upper Primary	6.8	6.7	6.3	6.5	6.5
	Secondary	6.4	6.4	6.4	6.5	6.4
	Higher Secondary	4.9	6.3	6.2	2.0	5.8
No of Schools having complete set of free text book received	Primary	2,759	444	29	1	3,233
	Upper Primary	911	599	26	1	1,537
No of Schools having TLE available for each grade	Primary	2,754	437	191	5	3,387
	Upper Primary	908	588	156	2	1,654
No of Schools having playing material, games and sports equipment available for each grade\	Primary	2,673	433	196	5	3,307
	Upper Primary	871	578	162	1	1,612
No. of Schools having any children enrolled in school special training	Schools	68	112	35	0	215
No of Children Enrolled for Special Training in Previous Year	Boys	0	0	0	0	0
	Girls	0	0	0	0	0
No of Children Provided for Special Training in Previous Year	Boys	36	112	51	0	199
	Girls	68	112	35	0	215

9. Right To Education (RTE) Information

Subject		Govt. & Local Bodies	Private Aided	Private Un-Aided	Unrecognised	Total
Elementry Schools All(Classess Having 1 to 8)		2,768	684	349	23	3,824
No of Children Enrolled for Special Training in Current Year	Boys	58	105	77	0	240
	Girls	40	75	35	0	150
No of Children Provided for Special Training in Current Year	Boys	36	112	51	0	199
	Girls	68	60	35	0	163
No. of Childrens completed special training during previous year	School Teachers	76	33	6	0	115
	Specially engaged	20	20	2	2	44
	Both	0	0	0	0	0
	NGO	1	0	0	0	1
	Other	1	1	1	0	3
	None	2,670	647	341	22	3,680
Special training is conducted in	School primises	75	28	7	0	110
	Other than School primises	23	1	0	0	24
	Both	0	1	2	0	3
Type of Training	Residential	30	11	1	1	43
	Non Residential	79	25	1	0	105
	Both	2	2	1	0	5

10. CWSN with Special Needs (Current Year)

Type of Facility	Elementary			Secondary / Hsecondary		
	Boys	Girls	Total	Boys	Girls	Total
Blindness	51	47	98	25	20	45
Low-vision	1,194	1,181	2,375	383	531	914
Hearing impairment	377	272	649	105	80	185
Speech and Language disability	614	252	866	58	30	88
Locomotor Disability	461	318	779	177	119	296
Mental Illness	8	7	15	3	1	4
Specific Learning Disabilities	1,566	1,042	2,608	101	48	149
Cerebral palsy	64	23	87	7	10	17
Autism Spectrum Disorder	33	25	58	2	2	4
Multiple Disability including deaf, blindness	281	156	437	33	19	52
Leprosy Cured persons	0	3	3	1	2	3
Dwarfism	33	38	71	9	10	19
Intellectual Disability	959	530	1,489	216	136	352
Muscular Dystrophy	39	20	59	12	12	24
Chronic Neurological conditions	32	17	49	2	cwsn_15	2
Multiple Sclerosis	3	2	5	1	0	1
Thalassemia	14	8	22	2	2	4
Hemophilia	5	4	9	2	0	2
Sickle Cell disease	7	2	9	9	9	18
Acid Attack victim	5	2	7	0	0	0
Parkinson's disease	2	2	4	2	0	2
Total (Class 1 to 8)	5,748	3,951	9,699	1,150	1,031	2,181
Grand Total (Class 1 to 12)	6,898	4,982	11,880			