



District Profile

Based on Unified District Information System for Education (UDISE), 2017-18

District : Thane

1 – Demographic (Source : Census of India,2011)

	Male	Female	Person	Sex Ratio	Child Sex Ratio (0-6 years)
Population	58,79,387	51,74,744	1,10,54,131		
Literacy rate	90.9	80.8	86.2	880	918

2- Number of Schools by Management and Category (Class 1 to 12)

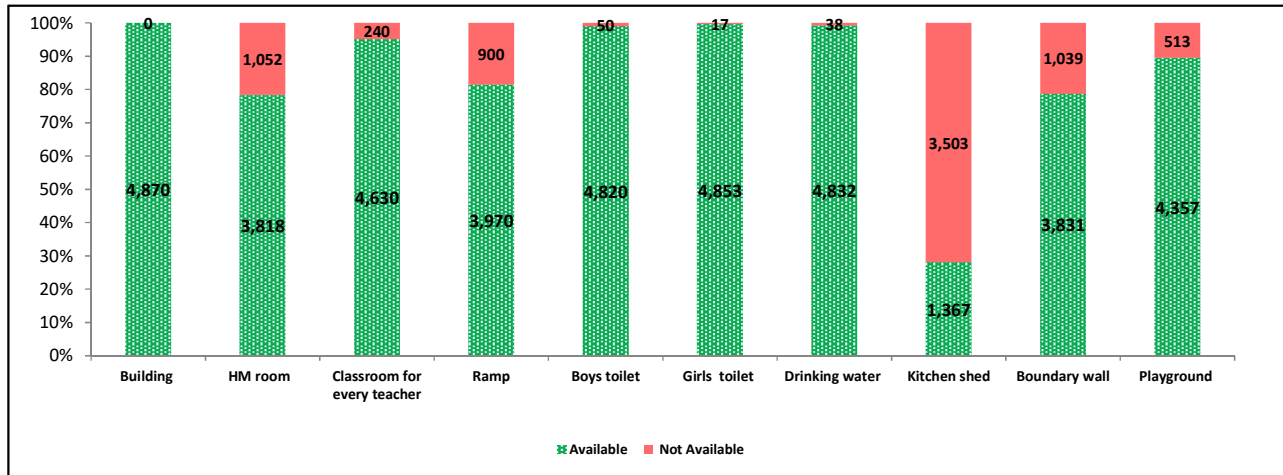
Indicator (Number of schools)	Govt. and Local bodies	Pvt. Aided	Pvt. Unaided	Un-recognised	Total
Primary (1-4/5)	1,050	141	177	50	1,418
Primary with Upper Primary (1-7/8)	713	354	736	96	1,899
Pri,Upper,Secondary with Hsecondary (1 to 12)	12	100	75	3	190
Only Upper Primary (5/6 to 7/8)	1	0	5	2	8
Upper,Secondary with Hsecondary (5/6 to 12)	0	58	74	0	132
Primary,Upperprimary with Secondary(1 to 10)	13	143	123	11	290
Upperprimary with Secondary(5/6 to 10)	14	221	429	9	673
Secondary Only (8/9 to 10)	30	4	77	14	125
Secondary with HSecondary(8/9 to 12)	0	0	20	0	20
Higher Secondary with college attached (11 to 12)	2	15	98	0	115
Total	1,835	1,036	1,814	185	4,870
Having Primary level classes	1,788	738	1,111	160	3,797
Having Upper Primary level classes	753	876	1,442	121	3,192
Having Secondary level classes	69	526	798	37	1,430
Having HigherSecondary level classes	14	173	267	3	457
Ratio of Primary to Upper Primary schools				State average	1.86
				District	1.19

3 - Number of Mediumwise Schools by Management .(Class 1 to 12)

Indicator (Number of Mediumwise schools)	Govt. and Local bodies	Pvt. Aided	Pvt. Unaided	Un-recognised	Total
Marathi	1,626	681	151	27	2,485
English	15	29	1,520	135	1,699
Hindi	45	189	98	13	345
Urdu	116	85	37	10	248
Bangali	0	0	0	0	0
Gujrati	12	25	4	0	41
Kannada	3	6	1	0	10
Sindhi	2	16	2	0	20
Tamil	2	1	0	0	3
Telgu	14	4	1	0	19
Sanskrit	0	0	0	0	0

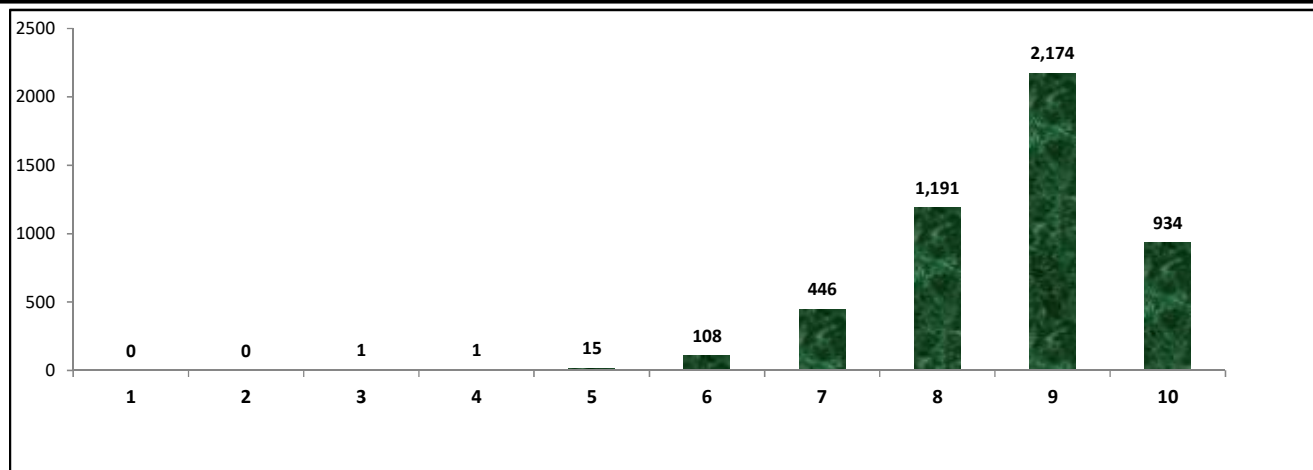
4 – Infrastructure at Elementry Level

Status of Infrastructure Facilities in Schools (Numbers, All schools)



Indicator : Schools with infrastructure facilities available (Sch.All)		Govt. and Local bodies	Pvt. Aided	Pvt. Unaided	Un-recognised	Total
Total Schools		1835	1036	1814	185	4870
1. Building	Number	1,835	1,036	1,814	185	4,870
	%	100.00	100.00	100.00	100.00	100.00
2. Office-cum-store-cum-HM room	Number	946	1,008	1,727	137	3,818
	%	51.55	97.30	95.20	74.05	78.40
3. One classroom for every teacher	Number	1,813	963	1,684	170	4,630
	%	98.80	92.95	92.83	91.89	95.07
4. Ramp	Number	1,787	819	1,266	98	3,970
	%	97.38	79.05	69.79	52.97	81.52
5. Separate toilet for boys	Number	1,821	1,019	1,798	182	4,820
	%	99.24	98.36	99.12	98.38	98.97
6. Separate toilet for girls	Number	1,826	1,029	1,813	185	4,853
	%	99.51	99.32	99.94	100.00	99.65
7. Drinking water facility	Number	1,835	1,036	1,791	170	4,832
	%	100.00	100.00	98.73	91.89	99.22
8. Kitchen shed (Gov & Aided Schools)	Number	1,111	256	NA	NA	1,367
	%	60.54	24.71	NA	NA	47.61
9. Boundary wall	Number	1,188	900	1,628	115	3,831
	%	64.74	86.87	89.75	62.16	78.67
10. Playground	Number	1,566	1,004	1,650	137	4,357
	%	85.34	96.91	90.96	74.05	89.47
Indicators		Govt. and Local bodies	Pvt. Aided	Pvt. Unaided	Un-recognised	Total
Number of classrooms(1 to 8)		6,309	5,115	11,242	1,000	23,666
Number of classrooms(9 to 10)		13,924	5,099	6,883	328	26,234
Number of classrooms(11 to 12)		3,927	1,705	2,157	6	7,795
Student Classroom Ratio (SCR) Primary		30	UpperPri.	41	Elementry	39
Primary schools having SCR more than 30	Number	80	76	105	5	266
	%	7.62	53.90	59.32	10.00	18.76
Upper Primary. schools having SCR more than 35	Number	349	243	487	32	1,111
	%	46.35	27.74	33.77	26.45	34.81
Schools fulfilling "10" infrastructure norms for building under RTE (Ele.Sch.)	Number	305	173	430	26	934
	%	16.64	16.94	25.06	14.05	19.64

Number of schools by number of infrastructure elements compliance



5- Enrolment (Class 1 to 12)

Number of students enrolled in		Govt. and Local bodies	Pvt. Aided	Pvt. Unaided	Un-recognised	Total
Primary Classes (1-5)	Boys	68,765	79,813	2,47,834	12,302	4,08,714
	Girls	73,457	85,657	1,95,839	10,445	3,65,398
	Total	1,42,222	1,65,470	4,43,673	22,747	7,74,112
Upper Primary Classes (6-8)	Boys	29,403	76,157	1,23,240	3,350	2,32,150
	Girls	31,680	78,105	92,537	2,886	2,05,208
	Total	61,083	1,54,262	2,15,777	6,236	4,37,358
Secondary Classes (9-10)	Boys	6,880	61,179	67,722	794	1,36,575
	Girls	6,923	60,997	51,584	687	1,20,191
	Total	13,803	1,22,176	1,19,306	1,481	2,56,766
Higher Secondary Classes (11-12)	Boys	1,003	45,248	46,526	91	92,868
	Girls	683	45,983	37,780	150	84,596
	Total	1,686	91,231	84,306	241	1,77,464
Elementary Classes (1-8)	Boys	98,168	1,55,970	3,71,074	15,652	6,40,864
	Girls	1,05,137	1,63,762	2,88,376	13,331	5,70,606
	Total	2,03,305	3,19,732	6,59,450	28,983	12,11,470
All Classes (1-12)	Boys	1,06,051	2,62,397	4,85,322	16,537	8,70,307
	Girls	1,12,743	2,70,742	3,77,740	14,168	7,75,393
	Total	2,18,794	5,33,139	8,63,062	30,705	16,45,700

5.1- Castewise Enrolment (Class 1 to 12)

Indicator	Primary	Upper Primary	Secondary	Higher Sec.	Elementry	All
All Social Groups	7,74,112	4,37,358	2,56,766	1,77,464	12,11,470	16,45,700
General	4,79,225	2,65,784	1,53,703	1,08,831	7,45,009	10,07,543
Schedule Castes (SC)	73,169	44,046	27,004	17,651	1,17,215	1,61,870
Schedule Tribes (ST)	47,134	28,360	14,583	7,531	75,494	97,608
Other Backward Classes (OBC)	1,74,584	99,168	61,476	43,451	2,73,752	3,78,679
Muslim	8,10,562	4,23,966	2,13,418	1,06,163	12,34,528	15,54,109
Nomadic Tribes (NT)	78,633	44,012	24,388	12,280	1,22,645	1,59,313
Vimukat Jatis (VJ)	6,946	4,292	2,485	1,316	11,238	15,039
Special Backward Classes (SBC)	1,28,404	54,053	27,395	13,555	1,82,457	2,23,407
Bouddhist Minority	1,21,816	74,578	45,412	24,989	1,96,394	2,66,795
Parshi Minority	25,344	15,202	7,997	3,520	40,546	52,063
Christan Minority	71,157	4,999	1,809	0	76,156	77,965
Sikh Minority	16,385	10,557	6,965	4,624	26,942	38,531
Jain Minority	26,603	17,005	11,268	3,826	43,608	58,702
B. P. L.	1,73,393	71,761	26,874	9,130	2,45,154	2,81,158
Children with Special Needs (C.W.S.N.)	10,243	5,566	2,583	387	15,809	18,779

5.2- Mediumwise Enrolment (Class 1 to 12)

Indicator (Number of Mediumwise schools)	Govt. and Local bodies	Pvt. Aided	Pvt. Unaided	Un-recognised	Total
Marathi	1,53,922	3,28,641	27,892	4,214	5,14,669
English	8,391	51,433	8,11,492	23,417	8,94,733
Hindi	17,226	81,076	16,523	1,529	1,16,354
Urdu	36,928	61,997	6,822	1,545	1,07,292
Bangali	0	0	0	0	0
Gujrati	566	4,660	108	0	5,334
Kannada	244	804	43	0	1,091
Sindhi	10	3,895	97	0	4,002
Tamil	352	14	0	0	366
Telgu	1,155	619	85	0	1,859
Sanskrit	0	0	0	0	0
School size (Distribution of schools by Enrolment)	Govt. and Local bodies	Pvt. Aided	Pvt. Unaided	Un-recognised	Total
Less than 10	77	21	32	4	134
11-20	230	11	29	12	282
21-30	301	10	42	17	370
31-60	395	35	117	31	578
61-150	389	159	388	61	997
More than 150	443	800	1,206	60	2,509

6- Gender Gap in Enrolment (in %)

Indicator	Primary	Upper Primary	Secondary	Higher Secondary	Elementry	All
All Social Groups	5.60	6.16	6.38	4.66	5.80	5.77
General	7.23	8.20	7.63	5.61	7.58	7.37
Schedule Castes (SC)	3.51	3.10	3.47	2.57	3.35	3.29
Schedule Tribes (ST)	2.67	4.92	8.07	10.61	3.52	4.75
Other Backward Classes (OBC)	2.77	2.41	4.14	5.32	4.54	5.84
Muslim	-8.74	2.57	0.48	-8.74	2.66	1.39
Nomadic Tribes (NT)	3.18	4.44	6.40	6.68	3.63	4.33
Vimukat Jatis (VJ)	4.32	4.84	1.61	4.28	4.51	3.90
Special Backward Classes (SBC)	5.21	3.45	12.03	12.03	4.54	5.84
Bouddhist Minority	3.98	1.60	7.03	-0.14	3.06	3.35
Parshi Minority	11.57	13.82	12.12	-3.90	12.33	9.84
Christan Minority	2.25	-0.75	1.58	7.08	1.12	1.83
Sikh Minority	8.18	9.31	6.29	2.90	8.61	7.63
Jain Minority	4.32	4.84	1.61	4.28	4.51	3.90
B. P. L.	20.61	14.76	9.45	24.55	18.53	17.37
Children with Special Needs (C.W.S.N.)	20.53	15.13	10.80	24.03	1.12	17.66
No. of clusters having gender gap > 10 %	21	45	60	53	29	32
No. of Block having gender gap > 10 %	0	0	0	3	0	0

7- Teacher (Class 1 to 12)

Indicators	Govt. and Local bodies	Pvt. Aided	Pvt. Unaided	Un-recognised	Total
Number of Teachers	Male	3,738	7,389	6,490	17,908
	Female	4,027	6,512	16,454	28,065
	Total	7,765	13,901	22,944	45,973
Percentage of female teachers to total teachers	51.86	46.85	71.71	78.65	61.05
Schools without a female teacher	Number	495	132	207	851
	%	26.98	12.74	11.41	9.19

7.1- Mediumwise Teacher (Class 1 to 12)

Medium	Govt. and Local bodies	Pvt. Aided	Pvt. Unaided	Un-recognised	Total
Marathi	5,999	8,949	986	183	16,117
English	231	930	21,055	1,040	23,256
Hindi	361	2,139	596	70	3,166
Urdu	1,045	1,438	273	70	2,826
Bangali	0	0	0	0	0
Gujrati	32	257	14	0	303
Kannada	15	35	4	0	54
Sindhi	2	133	11	0	146
Tamil	11	1	0	0	12
Telgu	69	19	5	0	93
Sanskrit	0	0	0	0	0

7.2- Castewise Teacher (Class 1 to 12)

Caste	Govt. and Local bodies	Pvt. Aided	Pvt. Unaided	Un-recognised	Total
All	7,765	13,901	22,944	1,363	45,973
Genral	3,574	8,447	19,661	1,000	32,682
SC	738	1,109	829	67	2,743
ST	611	887	212	24	1,734
OBC	2,133	2,615	1,767	240	6,755
VJ	200	292	163	0	655
OTHER	60	84	106	16	266
SBC	183	136	109	10	438
NT-B	93	117	45	0	255
NT-C	109	138	38	5	290
NT-D	64	76	14	1	155

Indicators		Govt. and Local bodies	Pvt. Aided	Pvt. Unaided	Un-recognised	Total
Schools with single teacher	Number	191	12	25	3	231
	%	10.41	1.16	1.38	1.62	4.74
PTR	Local Body-Only	Primary Section	Upper Primary Section	Secondary Section	Elementry Section	All (Class 1-12)
Pupil Teacher Ratio	29	40	34	32	37	36

Indicators		Govt. and Local bodies	Pvt. Aided	Pvt. Unaided	Un-recognised	Total
Primary schools having PTR more than 30	Number	77	73	105	5	260
	%	7.33	51.77	59.32	10.00	18.34
Upper Primary having PTR more than 35	Number	156	82	199	6	443
	%	20.72	9.36	13.80	4.96	13.88
Trained /Untrained Teacher	Primary Section	Upper Primary Section	Secondary Section	Higher Secondary Section	Elementry Section	All
Teacher All	19,464	13,051	9,385	4,073	32,515	45,973
Trained Teacher Number	18,756	12,742	9,283	3,966	31,498	44,747
%	96.36	97.63	98.91	97.37	96.87	97.33
Untrained Teacher All Number	708	309	102	107	1,017	1,226
%	3.64	2.37	1.09	2.63	3.13	2.67

8-Efficiency indicators

8.1 Annual Average Drop-out Rate

Social Groups	Primary			UpperPrimary		
	Boys	Girls	Total	Boys	Girls	Total
All Social Groups	0.05	-0.03	0.01	1.56	-1.42	1.71
General	-0.67	-0.64	-0.66	0.31	-3.59	0.23
Schedule Castes (SC)	0.84	0.21	0.53	2.71	0.58	2.25
Schedule Tribes (ST)	1.90	2.89	2.38	5.68	2.10	7.29
Other Backward Classes (OBC)	1.24	0.63	0.94	3.20	1.92	3.62
Muslim	-1.39	0.05	-0.68	2.70	-4.08	2.39

8.2 Transition Rate

Social Groups	Primary			UpperPrimary		
	Boys	Girls	Total	Boys	Girls	Total
All Social Groups	99.13	99.18	99.15	99.21	97.69	98.50
General	99.78	99.96	99.87	100.35	99.81	100.10
Schedule Castes (SC)	97.44	98.42	97.92	98.12	99.90	98.96
Schedule Tribes (ST)	98.90	95.07	97.02	92.57	85.56	89.29
Other Backward Classes (OBC)	97.08	98.11	97.58	95.07	95.07	96.95
Muslim	98.26	100.00	99.11	94.47	96.67	95.53

8.3 Gender Parity Index (GPI)

Social Groups	Primary Section	Upper Primary Section	Secondary Section	Higher Secondary Section	Elementry Section	All (Class 1-12)
All Social Groups	0.89	0.64	0.88	0.67	0.88	0.77
General	0.87	0.65	0.85	0.68	0.86	0.81
Schedule Castes (SC)	0.93	0.64	0.94	0.94	0.93	0.69
Schedule Tribes (ST)	0.95	0.65	0.91	0.58	0.85	0.62
Other Backward Classes (OBC)	0.95	0.60	0.95	0.66	0.92	0.75
Muslim	0.95	0.57	0.95	0.55	0.99	0.54

8.4 Retention Rate

Social Groups	Primary			UpperPrimary		
	Boys	Girls	Total	Boys	Girls	Total
All Social Groups	106.72	105.94	106.35	99.14	99.14	98.71
General	95.08	93.39	94.29	92.76	92.76	91.27
Schedule Castes (SC)	99.09	101.22	100.13	98.50	96.20	97.38
Schedule Tribes (ST)	94.31	94.50	94.40	92.30	89.12	90.78
Other Backward Classes (OBC)	106.41	104.82	105.64	92.91	91.85	92.40
Muslim	108.86	105.71	106.35	91.76	92.37	98.71

9. Right To Education (RTE) Information

Subject		Govt. & Local Bodies	Private Aided	Private Un-Aided	Unrecognised	Total
Elementry Schools All(Classses Having 1 to 8)		1,803	1,017	1,619	171	4,610
No of Schools CCE being implemented in school	No of Schools	1,803	1,015	1,496	127	4,441
	%	100.00	99.80	92.40	74.27	96.33
No of Schools having maintained pupil comulative records	No of Schools	1,801	991	1,447	113	4,352
	%	99.89	97.44	89.38	66.08	94.40
No. of Schools having shared pupil comulative records with parents	No of Schools	1,801	997	1,443	110	4,351
	%	99.89	98.03	89.13	64.33	94.38
No. of Schools having Constituted SMC	No of Schools	1,794	888	NA	NA	2,682
	%	99.50	87.32	NA	NA	95.11
No. of Schools having Constituted SMDC	No of Schools	35	372	NA	NA	407
	%	1.94	36.58	NA	NA	14.43
No. of Schools having Constituted SMC & SMDC are same	No of Schools	7	3	NA	NA	11
	%	0.41	0.33	NA	NA	0.38
Avg. total no. of SMC Members in schools	Male	6	5	NA	NA	3
	Female	7	6	NA	NA	4
Avg. no. of representative of parents / Guardians / PTA in SMC	Male	7	3	NA	NA	3
	Female	5	4	NA	NA	3
Avg. no. of representative of local authorities / local government /urban local	Male	1	1	NA	NA	0
	Female	1	1	NA	NA	220
Avg. no. of SMC meetings held in previous year		7	3	NA	NA	3
No.. of Schools having prepared SDP		1,784	754	NA	NA	2,767
No. of Schools having maintained separate SMC bank accounts		1,773	575	NA	NA	2,462
Avg. no. of instructional days of school in previous year	Primary	221	221	220	215	220
	Upper Primary	222	222	221	220	221
	Secondary	226	226	222	222	224
	Higher Secondary	210	220	212	73	179
Avg. of staying childrens hours in schools per day	Primary	5.5	5.4	5.4	5.4	5.4
	Upper Primary	5.5	5.4	5.4	5.4	5.4
	Secondary	5.1	5.4	5.3	4.9	5.2
	Higher Secondary	4.4	5.0	3.4	3.5	4.1
Avg. of teachers working hours in school per day	Primary	6.3	6.2	6.2	6.1	6.2
	Upper Primary	6.2	6.2	6.1	6.1	6.2
	Secondary	5.7	6.0	5.9	5.6	5.8
	Higher Secondary	5.6	5.8	5.9	2.1	4.8
No of Schools having complete set of free text book received	Primary	1,767	669	178	30	2,644
	Upper Primary	755	754	193	18	1,720
No of Schools having TLE available for each grade	Primary	1,742	671	534	56	3,003
	Upper Primary	729	748	567	37	2,081
No of Schools having playing material, games and sports equipment available for each grade\	Primary	1,474	658	565	66	2,763
	Upper Primary	592	732	611	43	1,978
No. of Schools having any children enrolled in school special training	Schools	885	984	101	5	1,975
No of Children Enrolled for Special Training in Previous Year	Boys	87	38	0	10	135
	Girls	127	41	0	5	173
No of Children Provided for Special Training in Previous Year	Boys	1,182	984	444	10	2,620
	Girls	885	984	101	5	1,975

9. Right To Education (RTE) Information

Subject		Govt. & Local Bodies	Private Aided	Private Un-Aided	Unrecognised	Total
Elementry Schools All(Classses Having 1 to 8)		1,803	1,017	1,619	171	4,610
No of Children Enrolled for Special Training in Current Year	Boys	1,194	1,020	627	0	2,841
	Girls	868	428	1,236	0	2,532
No of Children Provided for Special Training in Current Year	Boys	1,182	984	444	10	2,620
	Girls	885	404	101	5	1,395
No. of Childrens completed special training during previous year	School Teachers	238	69	14	2	323
	Specially engaged	18	18	1	1	38
	Both	2	2	0	0	4
	NGO	0	2	1	0	3
	Other	4	2	2	1	9
	None	1,541	936	1,602	169	4,248
Special training is conducted in	School primises	343	122	34	1	500
	Other than School primises	65	20	9	1	95
	Both	8	3	2	0	13
Type of Training	Residential	168	62	30	0	260
	Non Residential	322	87	30	1	440
	Both	13	2	2	0	17

10. CWSN with Special Needs (Current Year)

Type of Facility	Elementary			Secondary / Hsecondary		
	Boys	Girls	Total	Boys	Girls	Total
Blindness	116	70	186	28	16	44
Low-vision	2,543	2,303	4,846	607	705	1,312
Hearing impairment	1,020	808	1,828	155	138	293
Speech and Language disability	655	307	962	61	35	96
Locomotor Disability	778	519	1,297	188	121	309
Mental Illness	12	6	18	4	0	4
Specific Learning Disabilities	1,143	675	1,818	311	125	436
Cerebral palsy	191	100	291	29	27	56
Autism Spectrum Disorder	259	80	339	35	4	39
Multiple Disability including deaf, blindness	295	183	478	19	16	35
Leprosy Cured persons	15	14	29	1	1	2
Dwarfism	31	46	77	6	9	15
Intellectual Disability	2,197	1,261	3,458	203	92	295
Muscular Dystrophy	53	28	81	12	5	17
Chronic Neurological conditions	25	13	38	2	cwsn_15	2
Multiple Sclerosis	17	4	21	3	1	4
Thalassemia	19	6	25	5	2	7
Hemophilia	2	2	4	2	0	2
Sickle Cell disease	5	3	8	0	0	0
Acid Attack victim	1	2	3	0	0	0
Parkinson's disease	0	2	2	0	0	0
Total (Class 1 to 8)	9,377	6,432	15,809	1,671	1,297	2,968
Grand Total (Class 1 to 12)	11,048	7,729	18,777			